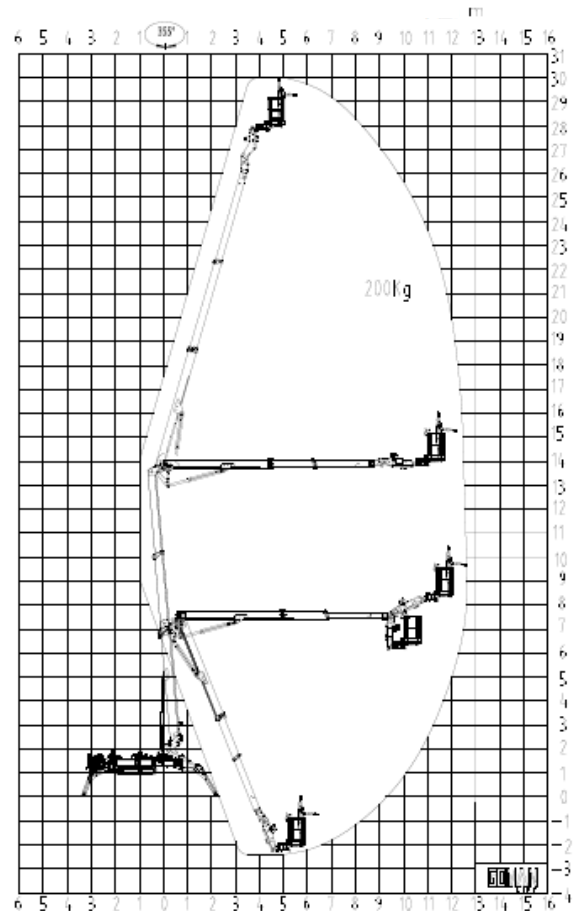
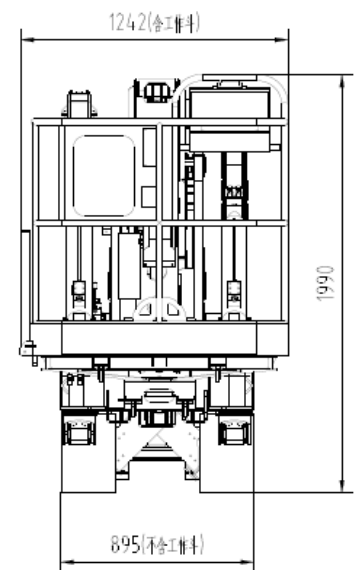
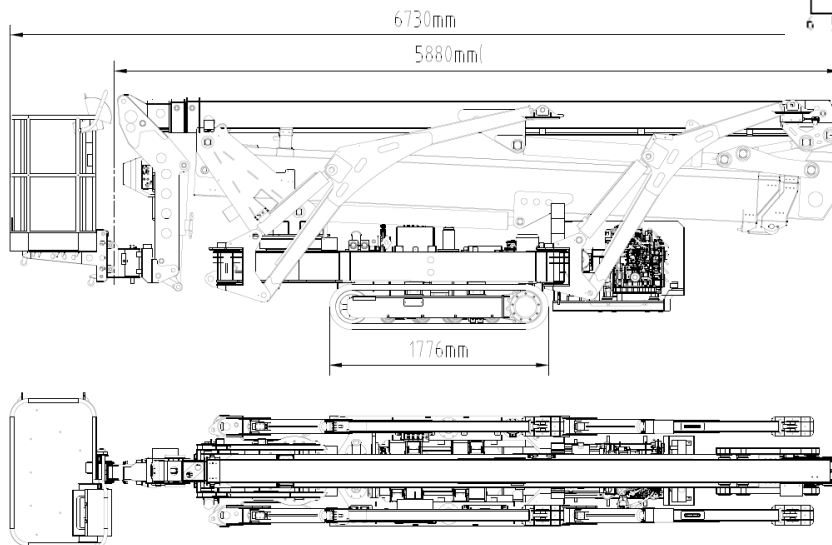




Standard Parameters

Model	X30	GX98
Max. work height	30.0m	98.4'
Max. platform height	28.0m	92'
Load capacity	200kg	440lb
Lateral Outreach	14.7m (80kg)	46'
	12.6m (200kg)	41.3'
Basket rotation	180°	
Jib rotation	120°	
Turntable rotation	360° non continuous	
Size of platform	1.4*0.7m	55" x 27.5"
Overall stowed length	6.88m	270"
Overall stowed width	1.24m	49" with basket
	0.895m	35.2" without basket
Overall stowed height	1.99m	78"
Total weight	4900kg	10,800lb
Driving speed km/h	0-2.2	
Max. work slope	20%	
Max. climbing ability	30%	
Dual Power Sources	Diesel engine + AC 220v 3hp (110v 2hp)	

Technical dimension



Standard Features

- ▶ German made IFM controller with HMI and valves
- ▶ Hydraulic extendable crawlers for adjusting height and width
- ▶ Battery emergency lowering (optional)
- ▶ Auto-leveling basket and outriggers
- ▶ Radio (+ cable) control for all movement
- ▶ 360°non-continuous turntable rotation
- ▶ Hydraulically arms and outrigger interlocks
- ▶ Load sensor, detachable basket
- ▶ 230v(110v 60Hz) 50Hz 16A outlet in the work platform
- ▶ Reaches standards of ISO, CE and ANSI/CSA

X28 (GX92) Price for Standard Parameters & Features

Options:

Hydraulic tool outlet	+ US\$480	Lithium battery lowering system+	US\$1100
Traction battery 80V 225Ah	+ US\$7100	Li battery 3 rd power 48V 250Ah +	US\$5800
Lithium battery 72v 215Ah	+ US\$9300	360 ° continuous rotation	+ US\$2100
Non-marking crawler	+ US\$400	Outrigger pads	+ US\$360

Contact: Goman Lift Tel: 514 318 6826 gomanlift@outlook.com
 Address: 8100G Trans Canada Route, Saint Laurent, QC H4S 1M5