

GOMAN LIFT

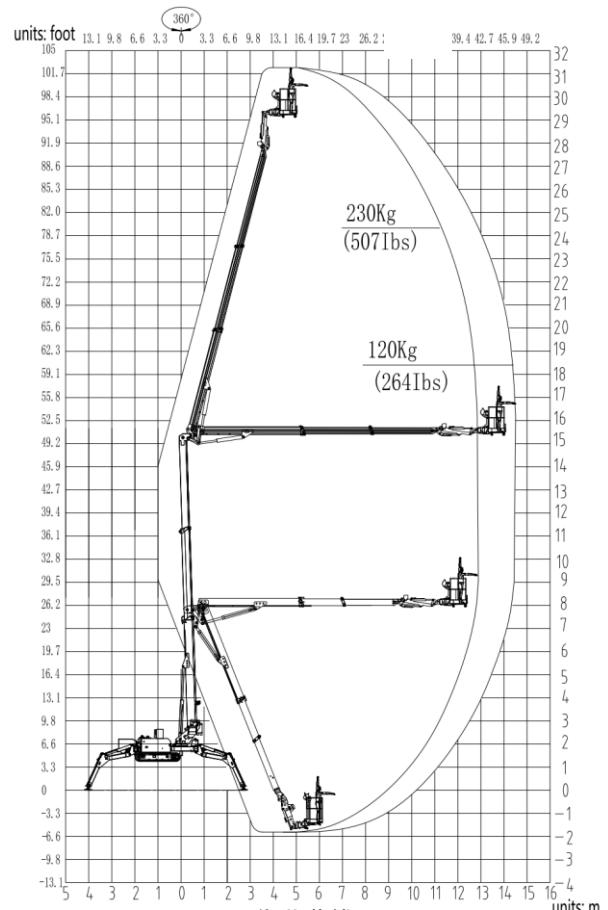
Spider X30

GX101

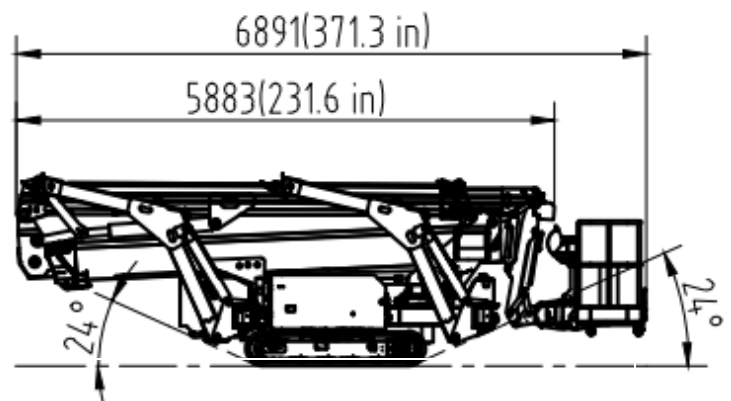
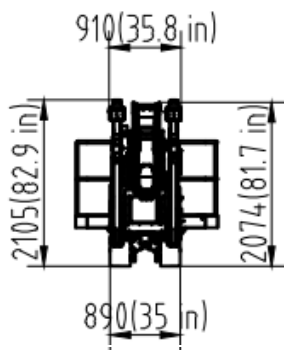


Standard Parameters

Model	X30	GX101
Max. work height	31.20m	101'
Max. platform height	29.20m	95'
Load capacity	200-230kg	440lb-507lb
Lateral Outreach	14.5m (120kg)	47.6'
	12.5m (230kg)	41'
Basket rotation	180°	
Jib rotation	90°	
Turntable rotation	360° Continuous	
Size of platform	1.4*0.7m	55" x 27.5"
Overall stowed length	6.90m	272" with basket
	5.90m	233" without basket
Overall stowed width	1.20m	47.3" with basket
	0.91m	35.8" without basket
Overall stowed height	2.10m	83"
Total weight	4700kg	10,350lbs
Driving speed km/h	0-2.0	
Max. work slope	20%	
Max. climbing ability	30%	
Dual Power Sources	Fuel engine + AC 220v 3hp (110v 2hp)	

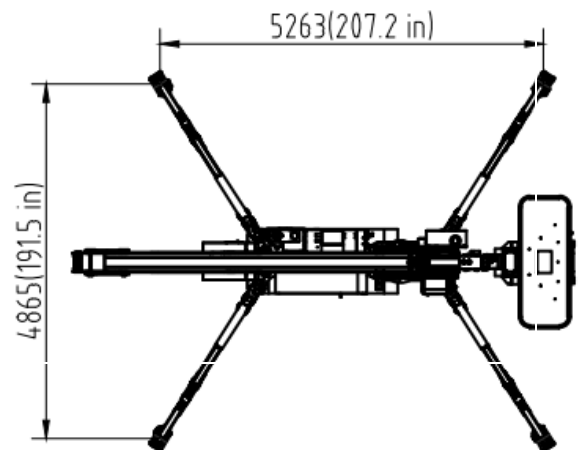


Technical dimension



Standard Features

- ▶ German made IFM controller with HMI and valves
- ▶ Hydraulic extendable crawlers for adjusting height and width
- ▶ Battery emergency lowering (optional)
- ▶ Auto-leveling basket and outriggers
- ▶ Radio (+ cable) control for all movement
- ▶ 360° non-continuous turntable rotation
- ▶ Hydraulically arms and outrigger interlocks
- ▶ Load sensor, detachable basket
- ▶ 230v(110v 60Hz) 50Hz 16A outlet in the work platform
- ▶ Reaches standards of ISO, CE and ANSI/CSA



Contact: Goman Lift Tel: 514 318 6826 gomanlift@outlook.com
 Address: 5589 Ch. Saint Francois, Saint Laurent, QC H4S 1W6