



USA  
MEXICO  
PORTUGAL  
SPAIN  
FRANCE  
EGYPT  
ITALY  
INDIA



**GROUP HEADQUARTERS**

Boldrocchi S.r.l. - Viale Trento e Trieste 93 - 20853 Biassono (MB) - Italia

T. +39 039 22021 | F. +39 039 2754200

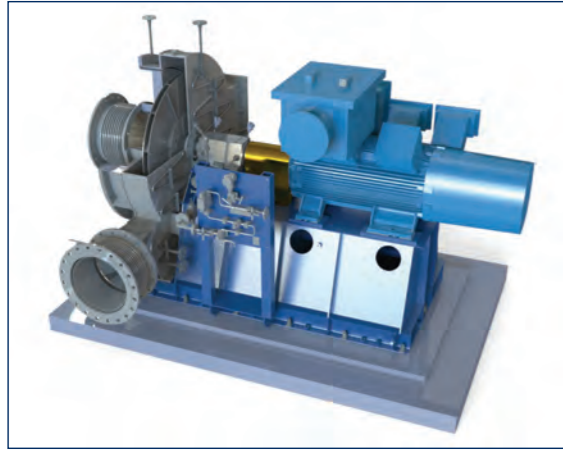
E-mail: [boldrocchi@boldrocchi.eu](mailto:boldrocchi@boldrocchi.eu) | [www.boldrocchi.it](http://www.boldrocchi.it)



**BLOWERS & COMPRESSORS**

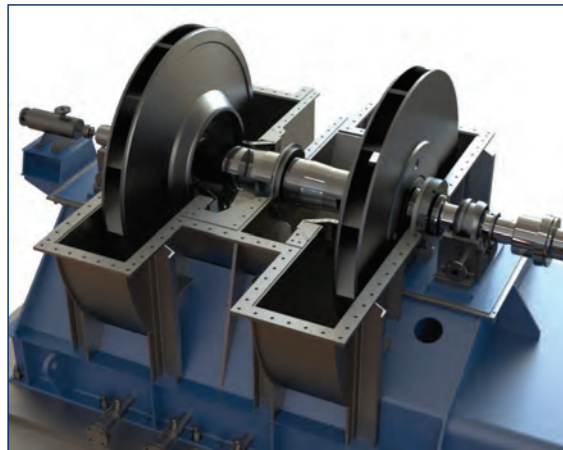
**WORLDWIDE ENGINEERING EXCELLENCE**

# BLOWERS



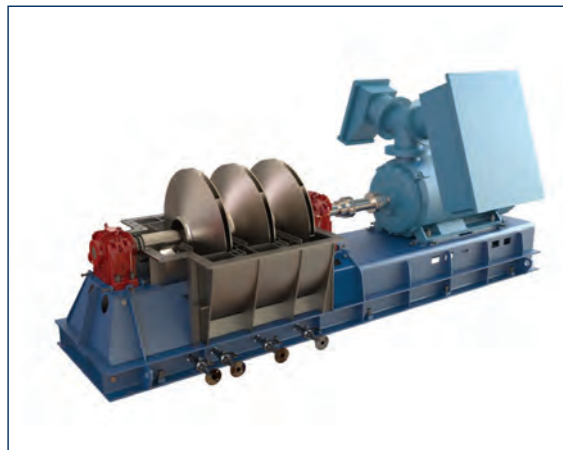
## ◆ Single Stage

- Flow rates up to 500,000 m<sup>3</sup>/h (147,145 ft<sup>3</sup>/min)
- Up to 5 MW (6,500 hp) of installed power
- Tip speeds over 280 m/s (920 fps)
- Hot-gas circulating fans up to 650°C / 1200°F (max. 850°C / 1560°F)
- Special blades design
- Pressure rise up to 500 mbar (7 psi)
- In-house manufacturing: 673, Custom Specification
- Welding: ASME, AWS, EN norms
- Impeller diameter up to 5m (197")
- Applicable our own design, API673 is available



## ◆ Double Stage

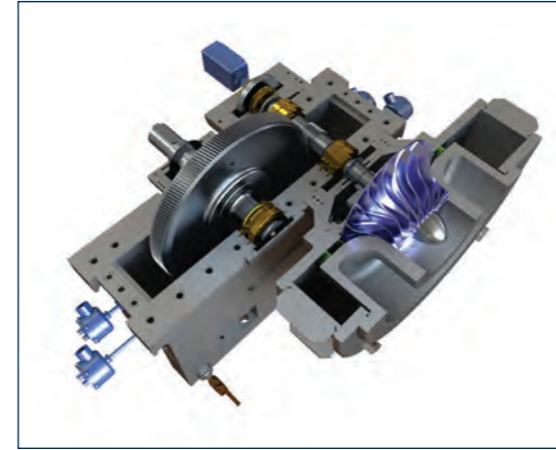
- Flow rates up to 200,000 m<sup>3</sup>/h (117,715 ft<sup>3</sup>/min)
- Blowers: 4 MW (5,360 hp) of installed power
- Tip speeds over 280 m/s (920 fps)
- Pressure rise up to 900 mbar (13 psi)
- In-house manufacturing API 673
- Impeller diameter up to 1.8m (71")
- Welding: ASME, AWS, EN norms
- Applicable our own design, API673 is available



## ◆ Multi Stage

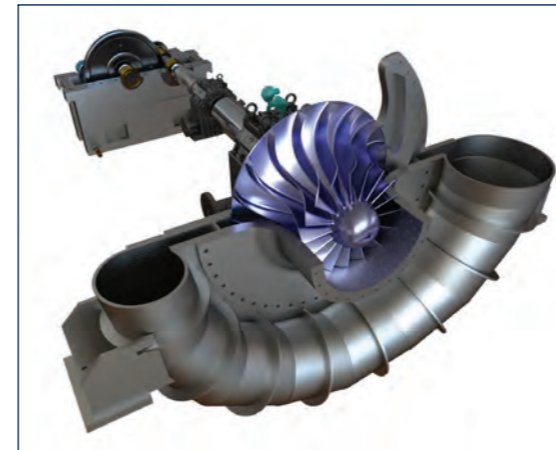
- Flow rates up to 50,000 m<sup>3</sup>/h (29,500 ft<sup>3</sup>/min)
- Blowers: 2 MW (2,70 hp) of installed power
- Lay-out up to 4 stages
- Tip speeds over 280 m/s (920 fps)
- Pressure rise up to 1000 bar (14.5 psi)
- In-house manufacturing API 673
- Impeller diameter up to 1.4m ( 55")
- Welding: ASME, AWS, EN norms
- Applicable our own design, API673 is available

# COMPRESSORS



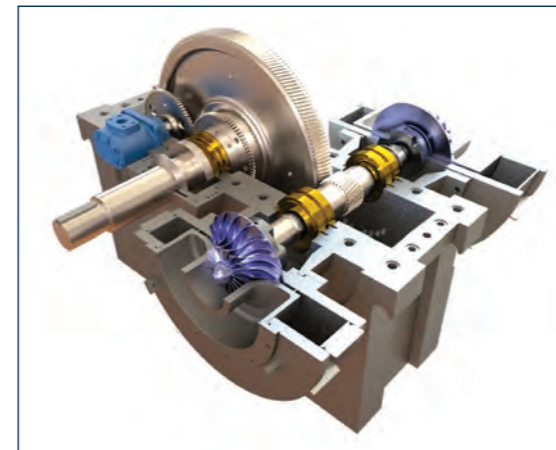
## ◆ Integrally Geared

- Flow rates up to 150,000 m<sup>3</sup>/h (88,300 ft<sup>3</sup>/min)
- Blowers: 5 MW (6,700 hp) of installed power
- Tip speeds over 440 m/s (1450 fps)
- Pressure rise up to 1.7 bar (24.6 psi)
- In-house manufacturing API 672
- Suitable for clean Air or Gases
- Impeller diameter up to 1m ( 40")
- Maximum pinion speed 36000 rpm
- Applicable our own design, API672 is available



## ◆ Externally Geared

- Flow rates up to 300,000 m<sup>3</sup>/h (88,300 ft<sup>3</sup>/min)
- Blowers: 5 MW (6,700 hp) of installed power
- Tip speeds over 440 m/s (1450 fps)
- Pressure rise up to 1.7 bar (24.6 psi)
- In-house manufacturing API 617
- Suitable for sticky and dirty gases
- Impeller diameter up to 1.6m ( 63")
- Maximum shaft speed 20000 rpm
- Applicable our own design, API617 is available



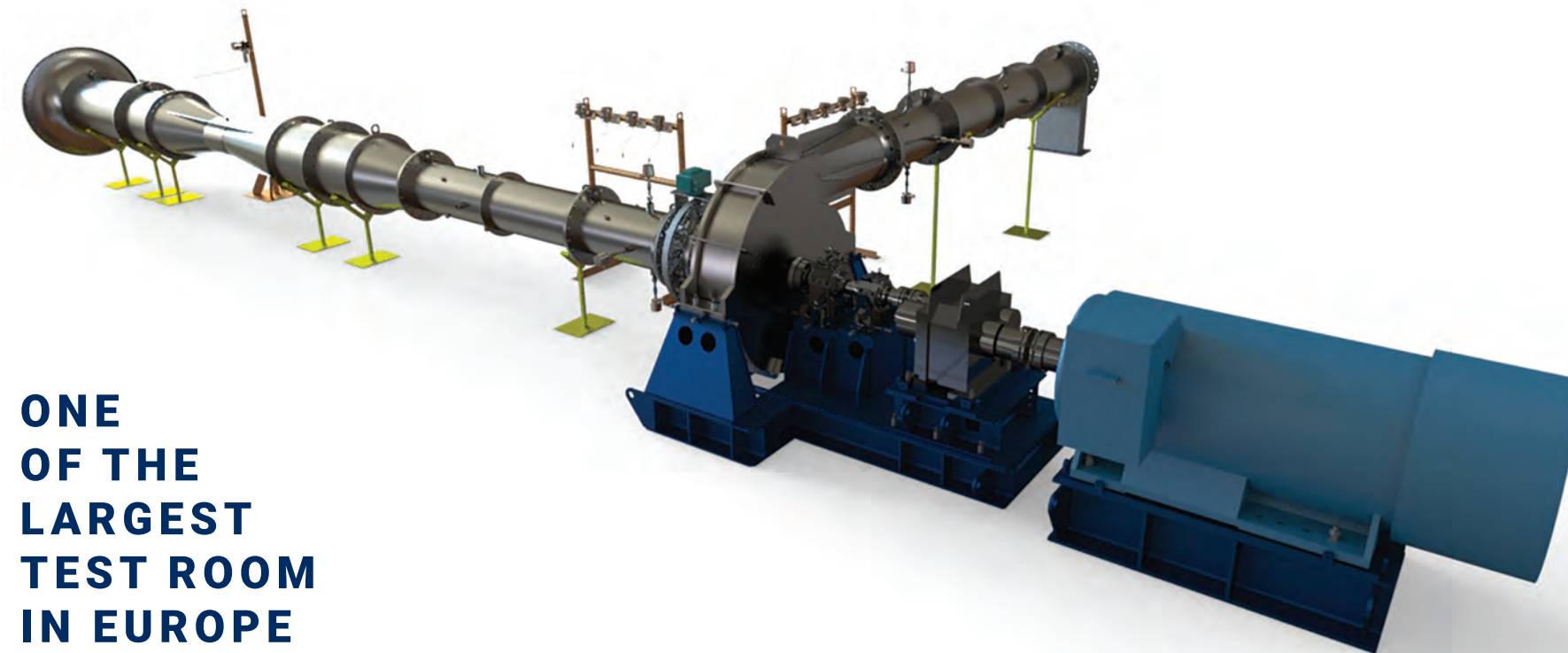
## ◆ Double Stage

- Flow rates up to 150,000 m<sup>3</sup>/h (88,300 ft<sup>3</sup>/min)
- Blowers: 5 MW (6,700 hp) of installed power
- Tip speeds over 440 m/s (1450 fps)
- Pressure rise up to 3.2 bar (46.7 psi)
- In-house manufacturing API 672
- Suitable for clean Air or Gases
- Impeller diameter up to 1m ( 40")
- Maximum pinion speed 36000 rpm
- Applicable our own design, API672 or API617 are available

# TESTING FACILITIES

## ASME PTC 10 Compressor's Performance Test for API 672 & 617

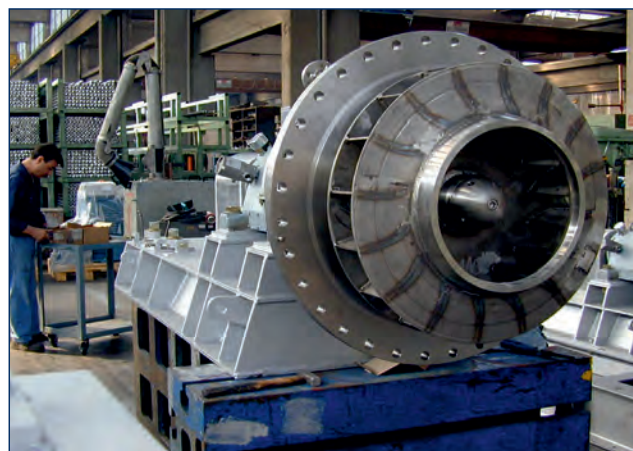
We customize centrifugal compressors with pressure ratios of 1.5-3.2 bar offering lower operating costs and higher operating efficiencies.



**ONE  
OF THE  
LARGEST  
TEST ROOM  
IN EUROPE**



◆ SRU



◆ CLORINATION CCR



◆ UREA PLANT



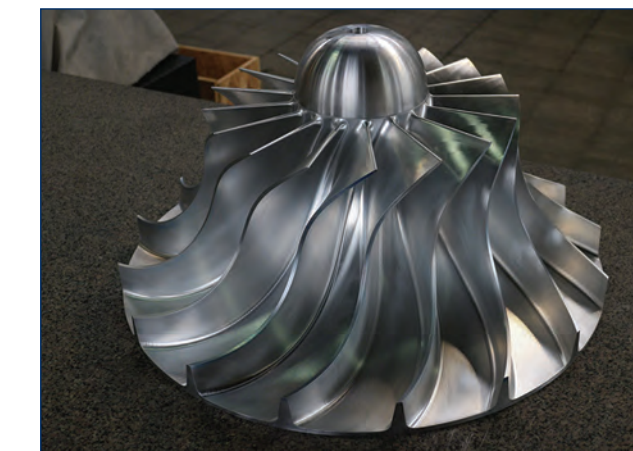
◆ MVR



◆ FLUE GAS DESULPHURATION



◆ AMMONIA PLANT



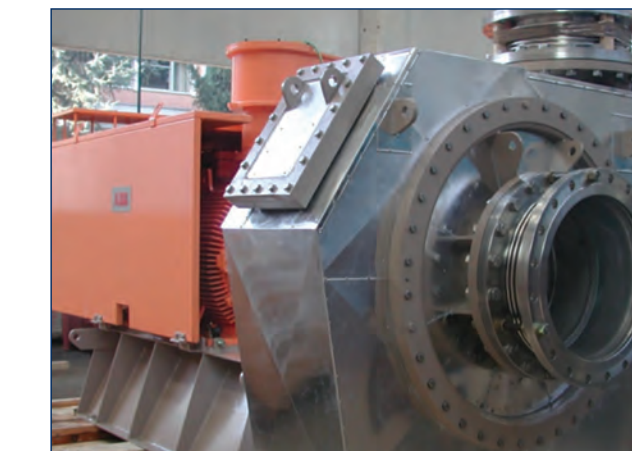
◆ AERATION BLOWER



◆ FORMALDEYDE GAS BLOWER



◆ RECYCLE GAS BLOWER



◆ SULPHURIC ACID GAS BLOWER



◆ COKE OVEN GAS BLOWER



◆ CLAU AIR BLOWER

### IN HOUSE TESTING

- AMCA 210, ASME PTC10 performance test room
- Full speed mechanical running tests with up to 7MW (9000 hp) motor
- Permanent power supply: 11 / 6 / 4 / 3.3 / 0.69 / 0.4 kV
- Hot gas test duct setup

### IN-HOUSE MANUFACTURING

- API 672, API 617, API 673
- Welding: ASME, AWS, EN norms
- Available materials
- High yield carbon steel
- Low alloy steel
- Stainless steel
- Duplex and super duplex steel
- Superalloys: Inconel®, Hastelloy®
- Titanium
- Aluminum

