

THE GUILLOTINE
FIRST DROP
NOVEMBER 2024



FLORAL STILL LIFE

£270

OIL ON BOARD SIGNED P FOREST, FRAMED WITH LINEN MOUNT AND WOODEN MOULDING WITH FARROW AND BALL COOK'S BLUE. LIMED TO SHOW THE DETAIL OF THE WOOD

87 X 75CM



FISHERMEN

£180

OIL ON PAPER SIGNED E.L.P. IN ANTIQUE CARVED WOODEN FRAME

58 X 39CM



STILL LIFE DAISIES

£110

OIL PAINTING SIGNED 1941 "GARSET", FRAMED IN BESPOKE SLIP PAINTED IN JUBILEE OLD ENGLISH WHITE AND BESPOKE FRAME PAINTED IN JUBILEE RAIL BLUE

26 X 28CM



FRUIT STILL LIFE

£210

BY BACYRE BA (UKRAINIAN) - OIL ON BOARD 1991; LINEN MOUNT AND WOODEN FRAME PAINTED IN FARROW AND BALL CROMARTY

56 X 42CM



ITALIAN PORT

£145

OIL ON BOARD DEPICTING AN ITALIAN PORT. LINEN SLIP WITH GOLD EDGING; BESPOKE WOODEN FRAME PAINTED IN FARROW AND BALL BREAKFAST ROOM GREEN



PINK FLOWERS STILL LIFE

£195

OIL ON BOARD SIGNED J VASOVIEZ. FRAMED IN BESPOKE WOODEN MOULDING WITH SLIP PAINTED IN JUBILEE NATAL ROSE

46 X 55CM



JOHN ABEL'S YOUNG PHENOMENON

£115

HORSE PRINT WITH AMAPOLA JAJ CHINA BLUE FABRIC SLIP AND FARROW AND BALL RECTORY RED MOULDING

29 X 24CM



TUSCAN SCENE

£180

SIGNED R GENTY FRAMED WITH LINEN SLIP AND BESPOKE WOODEN FRAME PAINTED IN BREAKFAST ROOM GREEN

60 X 52CM



STILL LIFE - PEARS ON TREES

£195

**SIGNED ANGELES FUERTES (20-21ST CENTURY) SPANISH, SIGNED AND DATED 1991 AND INSCRIBED ON A LABEL VERSO –
IN BESPOKE FRAME PAINTED IN FARROW AND BALL INDIA YELLOW**

47 X 54CM



MUSHROOMS

£200

**WATERCOLOUR ON PAPER SIGNED S BOGUILLON. LARSON JUHL MOUNT AND BESPOKE WOODEN FRAME WITH RED EARTH
FARROW AND BALL – LIMED TO SHOW THE DETAIL OF THE WOOD**

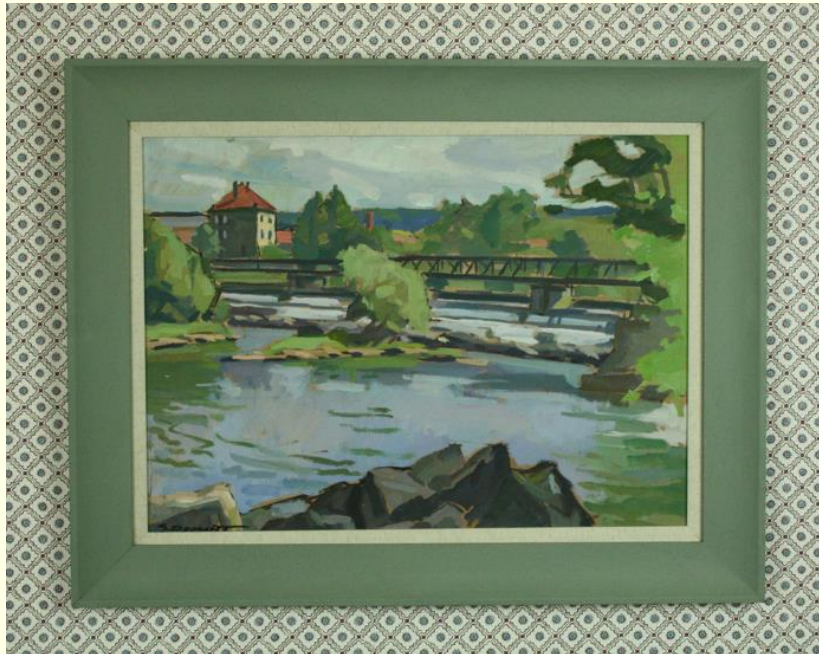
73 X 58CM



LANDSCAPE WITH WATER

£195

OIL ON BOARD FRAMED WITH LINEN MOUNT AND BESPOKE WOODEN FRAME IN FARROW AND BALL CALKE GREEN



FRENCH FISHERMEN

£120

OIL ON BOARD WITH ORIGINAL GOLD FRAME

22 X 18CM



FRENCH VILLA

£140

OIL ON BOARD SIGNED MICHEL IN ORIGINAL CARVED FRENCH FRAME

30 X 23CM



SUNFLOWER

£120

OIL ON BOARD IN ORIGINAL FRAME DEPICTING SUNFLOWER

22 X 25CM



PASTORAL SCENE WITH HAY BALES

£175

OIL ON CANVAS SIGNED DEMOTTE 1930, FRAMED WITH LINEN MOUNT AND BESPOKE WOODEN FRAME IN FARROW AND BALL CORD

74 X 54CM



VIEW THROUGH A WINDOW

£285

LARS SWANE (1913-2002) BRITISH ARTIST, SIGNED AND DATED 1938. FRAMED IN A BESPOKE OAK FRAME WITH NEUTRAL MOUNT

84 X 84CM



HOUSE IN A FIELD

£225

SIGNED L BOOSSENS, OIL ON CANVAS IN ITS ORIGINAL FRAME

92 X 75CM



LA VISITATION

£120

GOUACHE BY BELGIAN ARTIST JEANNE HEBBELYNCK (1881-1959), DEPICTING THE VISITATION OF MARY; ORIGINAL FRAME.

37 X 45CM



A RAY IN THE STORM

£110

OIL ON BOARD BY MAURICE ROGEROL (1873 – 1947); ORIGINAL RESTORED FRAME; SEVERAL OF THE ARTIST'S WORKS ARE KEPT IN THE MUSEUMS OF DOUAI

27 X 19CM



WATERFALL

£145

OIL ON CARD SIGNED C HILAIRE WITH BESPOKE PAINTED FRAME IN FARROW AND BALL STIFFKEY BLUE

30 X 36CM



THE WRITING CARRIERS

£120

BY LIONEL BORLA (B. 1974, FRANCE) MIXED MEDIA ARTWORK DEPICTING THREE SILHOUETTES CARRYING SCRIPTURES REFLECTING ON THE JOY OF ART. LIONEL HAS PERMANENT COLLECTIONS IN BARCELONA AND PARIS.

43 X 43CM



HOUSE IN THE DUNES

£90

OIL ON CANVAS IN ORIGINAL FRAME PAINTED IN JUBILEE NATAL ROSE

29 X 23CM



A CONTINENTAL SCENE

£220

ROLAND KEMPE (1907-1991) SWEDISH, DEPICTING A FIGURE WALKING THROUGH A SOUTHERN TOWN WITH BUILDINGS IN SUNSHINE. OIL ON CANVAS, SIGNED AND DATED 1934. WOODEN FRAME PAINTED IN EDWARD BULMER DUTCH ORANGE

63 X 52CM



RIVER SKETCH

£80

SKETCH WITH UNIQUE ORIGINAL MOUNT DEPICTING THE COLOURS THE ARTIST INTENDED TO USE IN A FINAL ARTWORK

INSERT DIMENSIONS



EMBROIDERIES OF GARDENS

£200



**TWO EMBROIDERIES WITH CARD MOUNT AND BESPOKE WOODEN FRAMES
PAINTED IN LIGHT BLUE FARROW AND BALL**

45 X 39CM

CONTINENTAL SCENE

£220

AFTER PHILIP NAVIASKY, FEMALE BEFORE CONTINENTAL VILLAS, BRITISH SCHOOL OIL ON CANVAS – ORIGINAL FRAME

62 X 46CM



FOUR BOTANICAL PRINTS

£175

VINTAGE BOTANICAL PRINTS, 1949, BY EDWARD STEP "SEA SPLEENWORK", "COMMON QUILLWORT", "FIELD HORSETAIL" AND "WOOD HORSETAIL"

23 X 27CM



FRENCH FASHION PRINTS

£160

SET OF TWO COLLECTABLE FRENCH HISTORICAL FASHION PRINTS FROM THE 1960S, FRAMED WITH BISCUIT MOUNT BOARDS AND GOLD FRAMES

33 X 38CM



STILL LIFE OF FLOWERS

£155

VLASTA LICHTAGOVA-KADLECOVA (1921-2013) UKRAINIAN ARTIST, OIL ON BOARD, SIGNED AND DATED '91 – ORIGINAL FRAME

54 X 63CM



THE SIDE OF THE SEINE

£165

OIL ON BOARD WITH INSCRIPTION IN FRENCH "I AM CONVALESCING BEFORE RETURNING TO THE 161ST INFANTRY AT GUINGAMP" 1941, HARDRICOURT NEAR MEULAN SEINE ET OISE. OIL ON BOARD

41 X 32CM



A LITTLE PORT IN THE GREY

£195

SAUZON FRANCE SIGNED MASSIN LOUIS MICHEL 1988 IN ITS ORIGINAL FRAME

91 X 73CM



WHEAT

£140

OIL IN BARLEY TWIST FRAME BY GUY DE MYTTERCERE SIGNED "GEDE"

43 X 36CM



STUDY OF A CRAB

£110

FRENCH WATERCOLOUR WITH DOUBLE MOUNT IN NEUTRAL AND TERRACOTTA. FRAMED IN CARVED OAK BESPOKE MOULDING

45 X 38CM



ORANGES

£155

OIL ON TEXTURED PAPER SIGNED BY THE ARTIST "DOUX", PAINTED IN A BESPOKE FRAME - FARROW AND BALL OLD WHITE

66 X 52CM



VIBRANT TREES

£110

OIL ON BOARD SUZANNE PORTIER SIGNED WITH LINEN MOUNT AND BESPOKE FRAMED MOULDING FARROW AND BALL XXX
29 X 40CM



NODDY LITHOGRAPHS IN BOBBIN FRAME

£120

LITHOGRAPH DATED 1956 IN BESPOKE BOBBIN FRAMES PAINTED IN FARROW AND BALL RECTORY RED
24 X 29CM



SWEET PEAS

£190

OIL ON BOARD SIGNED S WALPOLISRZ IN VINTAGE GOLD FRAME

56 X 46CM



HUNTER HORSE

£175

OIL ON BOARD WITH LIGHT BLUE FARROW AND BALL SLIP AND GOLD ANTIQUE FRAME

39 X 49CM



NUDE

£160

PETER COLLINS 20TH CENTURY BRITISH. SIGNED AND DATED 1972 IN PENCIL IN ENGRAVED WOODEN BESPOKE FRAME

54 X 68CM



SEASCAPE

£190

OIL ON BOARD DEPICTING FRENCH ROCKY CRAGS ON BEACH - ORIGINAL FRAME

46.5 X 35CM



WINDMILL

£170

OIL ON BOARD WITH LINEN AND GOLD SLIP AND STAINED WOOD BESPOKE MOULDING

58 X 45CM



GORGE

£90

SIGNED PIERRE LACROIX AND IN ITS ORIGINAL FRAME

53 X 45CM



IRISH CONTINENTAL SCENE

£170

ARTIST EILEEN MURRAY DEPICTS A WOMAN AND CHILD IN BESPOKE FRAME PAINTED IN LITTLE GREENE CELESTIAL BLUE

41.5 X 49.5CM



PIETRO SANSALVADOR - VENETIAN SCENE

1892-1955 ITALIAN; A VENETIAN SCENE, OIL ON BOARD AND FRAMED IN BESPOKE WOODEN FRAME PAINTED IN EDWARD BULMER DUTCH ORANGE

65.5 X 51.5CM



MAY NOT HAVE TIME TO FINISH

OPERA SINGER

BESPOKE FRAME PAINTED IN BRINJAL

38 X 46CM

TULIPS STILL LIFE

SIGNED LILY ROSSIGNOL (FRENCH, 1859 - 1936)

MUSHROOMS

£90

