

**THE GUILLOTINE
TWYFORD FAIR**



ARABELLA@THEGUILLOTINE.CO.UK / 07886 118 277

RIVIERA SCENE £280

IN THE MANNER OF D'OYLY JOHN; OIL ON BOARD IN PASTA FRAME PAINTED IN FARROW AND BALL CALKE GREEN

36 X 42CM



THE WHEAT FIELD £350

JOHN GILBEY BOWLES (BRITISH 1929-2011): OIL ON BOARD IN TWISTED ROPE FRAME PAINTED IN FARROW AND BALL INDIA YELLOW

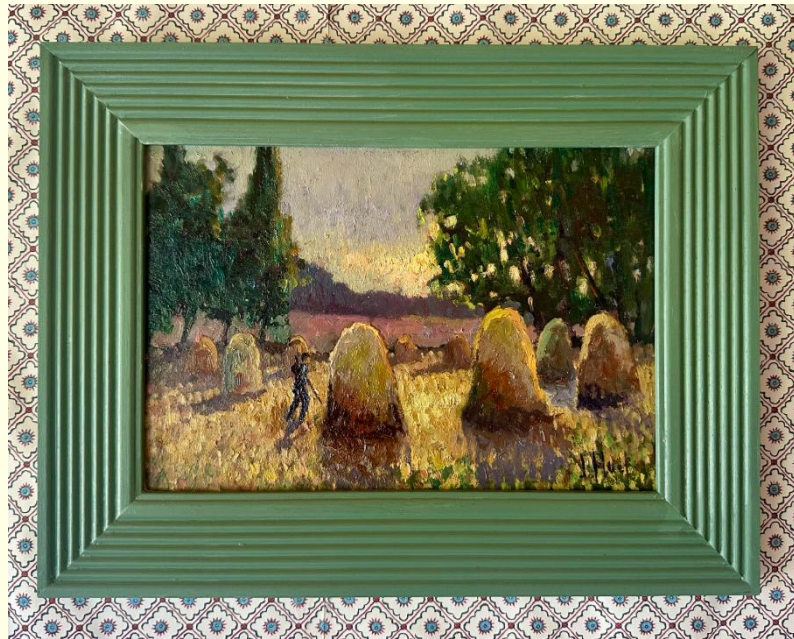
67 X 95CM



THE HAY BALES £250

FRENCH OIL ON BOARD IN RIBBED FRAME PAINTED FARROW AND BALL CALKE GREEN

34 X 45CM



ROCKCLIFFE SCENE £400

JOHN MCCUTCHEON (BRITISH, 1910-1995) ROCKCLIFFE, SCOTLAND, SIGNED LOWER RIGHT, LABEL TO THE BACK REFERRING TO LOCATION, OIL ON CANVAS

67 X 92CM



FLOWERS IN A JAR £145

SIGNED S CUNNINGHAM, OIL ON BOARD, ORIGINAL ANTIQUE FRAME

39 X 35CM



SAILING BOATS WITH LIGHTHOUSE £200

OIL ON BOARD IN ORIGINAL ANTIQUE FRAME SIGNED S BOULIN

33 X 38CM



GARDEN GATE £160

OIL ON CANVAS SIGNED MARIKA (FRENCH CONTEMPORARY) INSCRIBED VERSO

24 X 29CM



SHELLS AND FLOWERS £175

FLORAL WATERCOLOUR IN SHELL FRAME

41 X 32 CM



TREE BY THE RIVER £195

OIL ON BOARD SIGNED M MASSON, FRENCH IN ANTIQUE FRAME

45 X 57CM



SAILING REGATTA BY A CHURCH £150

OIL ON BOARD SIGNED M MARTIN; SWIRLY FRAME PAINTED IN FARROW AND BALL MATCHSTICK

30 X 37CM



COTTAGE IN THE WOODS £160

**OIL ON BOARD IN TWISTED ROPE FRAME WITH ARCHIVAL PINK FARROW AND BALL COLOUR FRUIT FOOL
31 X 38CM**



FISHING BOATS £200

**OIL ON BOARD IN ORIGINAL FRAME SIGNED GERARD; FRENCH CONTEMPORARY
39 X 31CM**



TREE ON A BEACH £220

OIL ON CANVAS IN ORIGINAL FRAME SIGNED M DUBOIS

37 X 47CM



FLOWERS IN A VASE £160

OIL ON CANVAS IN ORIGINAL FRAME

35 X 44CM



TREE REFLECTION £415

OIL ON BOARD IN ORIGINAL FRAME SIGNED J P FERRAND

79 X 89CM



DUTCH CANAL SCENE £350

OIL ON BOARD MID 20TH CENTURY IN ORIGINAL FRAME

55 X 45CM



GLADE SCENE IN THE POUILLY VALLEY £180
OIL ON CANVAS SIGNED JEN MARIE QUESNE IN ORIGINAL FRAME
32 X 39CM



INDIAN PRINCESS WITH COWBOYS £450
WATERCOLOUR ON CARD SIGNED KEITH BAYNES* IN ANTIQUE FRENCH FRAME
51 X 59CM



***BORN IN REIGATE, SURREY. STUDIED AT THE SLADE SCHOOL OF ART IN 1912-14. MET SICKERT DURING THE WORLD WAR I. AFTER THE WAR BECAME A MEMBER OF THE CIRCLE AROUND THE PAINTER ROGER FRY. SHOWED WITH THE LONDON ARTISTS' ASSOCIATION, NEAC AND WITH THE LONDON GROUP FROM 1919. FRIEND OF VANESSA BELL AND DUNCAN GRANT. EXHIBITED AT THE AGNEW'S, ADAMS GALLERY AND WIDELY OVERSEAS. RETROSPECTIVE EXHIBITION IN 1969 AT THE MINORIES, COLCHESTER. THE BRITISH COUNCIL, ARTS COUNCIL, PROVINCIAL AND GALLERIES ABROAD OWN HIS WORK.**

WWI TIGER MOTH PLANE IN FLIGHT £120

R B KEMPSTER (BRITISH 20TH CENTURY), ACRYLIC ON BOARD SIGNED.

40 X 76CM



CASTLE IN THE VALLEY £150

GOUACHE ON BOARD IN ORIGINAL FRAME SIGNED A MAREHANO

33 X 28CM



DONKEY GOING TO MARKET £220

OIL ON BOARD SIGNED G MARCHESSA IN ORIGINAL FRAME

37 X 48CM



AVENUE OF TREES £320

OIL ON BOARD IN ORIGINAL FRAME SIGNED TEZZATO 1947

59 X 67CM



COPPER JUG WITH VASE £260
OIL ON BOARD SIGNED IN ORIGINAL FRAME
45 X 36CM



FISHERMAN £120
OIL ON CANVAS IN ORIGINAL ANTIQUE FRENCH FRAME SIGNED B MICHEL
37 X 45CM



FLORAL STILL LIFE £400

OIL ON CANVAS | ORIGINAL FRAME SIGNED NOEL DELAUNOY

84 X 100CM



MEDITERANNEAN VILLAGE £400

OIL ON CANVAS IN BESPOKE FRENCH FRAME SIGNED B SCHMIEDER 1974

70 X 78CM



COTTAGE IN THE FIELD £195
WATERCOLOUR ON GREEN MOUNT AND FRENCH ANTIQUE LINEN FRAME
40 X 48CM



1950S ABSTRACT LANDSCAPE OIL ON CANVAS £350
IN ORIGINAL FRENCH LINEN FRAME SIGNED IRENE E.M
45 X 58CM



VILLA IN RIBBED FRAME £220

**OIL ON CANVAS SIGNED M POUSET IN RIBBED FRAME PAINTED IN FARROW AND BALL JOA'S WHITE
58 X 67CM**



PARIS IN THE 1960S £250

**OIL ON BOARD SIGNED A MARECHAL 1965 ON GREEN MOUNT AND ANTIQUE FRENCH FRAME
49 X 57CM**



NUDE IN RED PENCIL £280
IN ORIGINAL FRAME SIGNED VOLTI*
54 X 70CM



*** ANTONIUCCI VOLTI, FROM HIS REAL NAME VOLTIGERO, IS A FRENCH SCULPTOR, DRAFTSMAN AND ENGRAVER OF ITALIAN ORIGINS, HE WAS BORN IN 1915 IN ALBANO AND DIED IN PARIS IN 1989. HIS FATHER, A PROFESSIONAL STONECUTTER, TRANSMITTED TO HIM HIS PASSION OF WORKING WITH MATTER. VOLTI JOINED THE SCHOOL OF DECORATIVE ARTS OF NICE IN 1920. IN 1932, HE DECIDED TO MOVE TO PARIS, WHERE HE ATTENDED JEAN BOUCHER'S CLASSES AT THE SCHOOL OF FINE ARTS.**

THE ARTIST'S WORK BELONGS TO THE SAME STYLE THAN THAT OF RODIN, BOURDELLE AND MAILLOL.

ANTONIUCCI VOLTI DRAWS HIS INSPIRATION FOR HIS ARTISTIC CRÉATIONS, FROM WOMAN AND ITS BODY, WHICH HE WANTS TO MAGNIFY, SUBLIMATE AND GLORIFY. THE CURVES, LINES AND THE ROUNDNESS OF HER SILHOUETTE ENCHANT THE ARTIST WHO SEES IN IT THE INCARNATION OF BEAUTY AND CHARM. EVERY DAY, HE DOES SEVERAL SKETCHES FROM HIS LIVING MODELS. HIS DRAWINGS HELP HIM GRASP THE VOLUMES OF THE FEMALE BODY AS PRECISELY AS POSSIBLE. HIS CREATIONS ARE CARNAL AND SENSUAL.

ANTONIUCCI VOLTI'S SCULPTURES ARE PRESENT IN NUMEROUS FRENCH CITIES, SUCH AS PARIS, CANNES, ORLEANS, ANGERS, COLOMBES AND NANTES.

OWL £175

OIL ON PAPER IN ANTIQUE FRENCH FRAME SIGNED MASSE

38 X 30CM



VILLA BY RIVER £235

OIL ON CANVAS IN RIBBED FRAME PAINTED FARROW AND BALL RED EARTH SIGNED R MOUËL

50 X 40CM



ITALIAN BOATS £400

OIL ON BOARD IN ORIGINAL FRAME PAINTED FARROW AND BALL MATCHSTICK SIGNED R LE FEBVRE

66 X 96 CM



MOTHER AND DAUGHTER £205

SIGNED JOHN LAWRENCE (BRITISH 1933-): IN ORIGINAL FRAME PAINTED FARROW AND BALL BRINJAL

50 X 40CM



BOATS IN THE HARBOUR £160

OIL ON BOARD IN TWISTED ROPE FRAME PAINTED IN FARROW AND BALL RED EARTH

30 X 37CM



PUTNEY BRIDGE £180

OIL ON BOARD; INSCRIBED ON THE BACKING BOARD; MODERN BRITISH SCHOOL; RIBBED FRAME PAINTED IN FARROW AND BALL CALKE GREEN

29 X 44CM



VALLEY VIEW WITH GORSE £250

OIL ON BOARD IN PASTA STYLE FRAME PAINTED IN FARROW AND BALL SETTING PLASTER

41 X 48CM



FIELD FROM THE WOODS £160

OIL ON BOARD IN TWISTED ROPE FRAME PAINTED FARROW AND BALL FRUIT FOOL

40 X 30CM



BOATS AT SEA £150

OIL ON BOARD WITH TWISTED ROPE FRAME PAINTED IN FARROW AND BALL CALKE GREEN

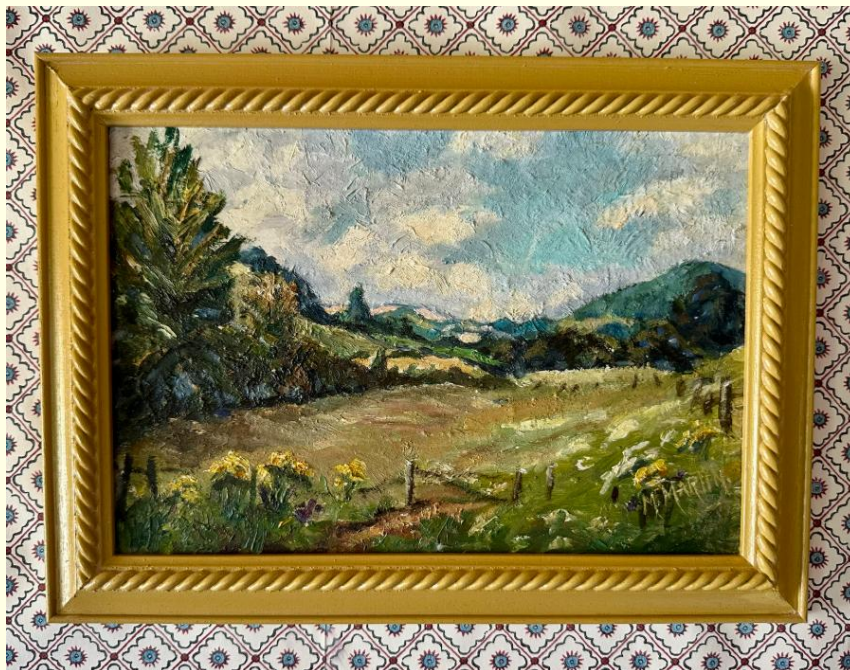
30 X 36CM



WALK THROUGH THE FIELDS £150

OIL ON BOARD WITH TWISTED ROPE FRAME PAINTED IN FARROW AND BALL

28 X 35CM



MANTLEPIECE £250

OIL ON CANVAS IN ORIGINAL FRAME SIGNED FANSOME

70 X 59CM



HOUSE BY A RIVER £245

OIL ON CANVAS SIGNED A PAVOT

59 X 67CM



STILL LIFE WITH GREEN TENDRILS £215

OIL ON BOARD SIGNED LIMRETTI CLUDE. HAND MADE FRAME SLIP PAINTED IN FARROW AND BALL RED EARTH WITH WHITE FRAME

50.5X 43CM



ANTIQUE ROSES £250

OIL ON BOARD IN ORIGINAL FRAME SIGNED LAUGERON

45 X 35CM



BERRY CHERRY £210
CREAM MOUNT AND CHERRY RED FRAME
66 X 55CM



STUDIES IN CHARCOAL £300
THREE CHARCOAL STUDIES FLOATING ON A FOREST GREEN MOUNT
WITH BRASS AZTEC STYLE FRAME
117 X 53CM



MOUNTAIN WATERCOLOUR £195
WATERCOLOUR FLOATING ON LINEN SLIP WITH AZTEC BRASS STYLE FRAME
47 X 63CM



MOUNTAIN AND LAKE WATER COLOUR £180
BAMBOO FRAME ON FOREST GREEN MOUNT
38 X 49CM



HEARTS £160

PAINT ON PAPER WITH MERLOT MOUNT AND FRAME

41 X 46CM



FRUIT BOWL £130

GREEN SLIP WITH NATURAL WOOD FRAME

39 X 34CM



POPPIES STILL LIFE £145
WATERCOLOUR - ANTIQUE GOLD BAMBOO FRAME
49 X 40CM



CERAMICS AND GLASSWARE PAIR £280
LINEN SLIP WITH TIMBER FRAME
38 X 45CM





ANGELS CAME AND WAITED – DANDELION £140
SIGNED WITH LINEN SLIP AND NATURAL TIMBER FRAME
40 X 48CM



THE OPEN BOULANGERIE £280

OIL ON BOARD IN ORIGINAL FRAME SIGNED VIEUX JACGNON

45 X 56CM

