

DEC STAR

TARGETED APPLICATIONS

- HVAC appliances such as furnaces, fan coil units, packaged units, ground coupled heat pumps, etc, up to 4000 CFM capacity per blower

SPECIFICATIONS

- High Efficiency Blower (HEB) housing with impeller driven by Axial Flux BLAC motor with full featured Sinusoidal EON motor control technology
- 10" diameter wheel with various widths available
- 2 Patents issued on the unique geometry blower. Other patents pending on the Halo motor system
- Operating speed range of 250-1400 rpm
- 16 pin Thermostat and PWM input to control
- Variable speed, constant torque/constant airflow ECM
- 120/240/277 and 120/240 VAC single-phase input, 50/60Hz
- UL & cUL recognized system

FEATURES

- Motor system has a shaft-less rotor system that allows the impeller to be hub-less.
- Standard Triangle motor mounts with welded on brackets support the motor
- Heavy duty welded aluminized steel is standard on blower assembly
- Uses proven industry standard impellers
- Typically fits same mounting as existing blower
- 6kV surge protection
- ECM Toolbox™ based programming

BENEFITS

- Saves 50% - 65%, or greater in wattage as compared to standard belt driven blowers
 - Reach next SEER level
 - Or use efficiency gain to remove coils and bring down full system cost
- Unique blower system removes motor from blower inlet eliminating restriction and improving system efficiencies
- Patented HEB design gives blower housing ultimate CFM for input watts
- Uniform airflow - same on both sides of blower unlike traditional system with motor restricting one side of blower
 - Improves Heat Transfer and reduces hot spots
 - Reduces pressure drop across appliance
- Air Handlers – Blower system reduces Velocity Head Losses, system savings highlighted in these low pressure applications
- Furnaces – Large exhaust, low inlet restriction and balanced uniform flow improves heat transfer characteristics and reduces pressure loss
- Full assembled system:
 - Improves system calibration – now whole system comes calibrated instead of motor only
 - Reduces finished goods inventory, WIP, and labor expenses
 - Reduces shipping expenses of multiple parts
 - Pallet location reduction in warehouse
 - Total unit weight reduction of approx 6lbs

AVAILABILITY

- Production ready

1946 West Cook Rd
Fort Wayne, IN 46818
PH: 260-416-5400
FAX: 260-416-5499

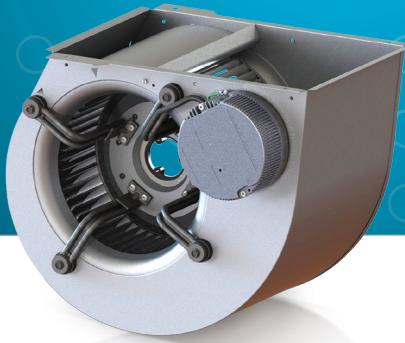
thedealertools.com

©2013 Regal-Beloit Corporation

A Regal Brand

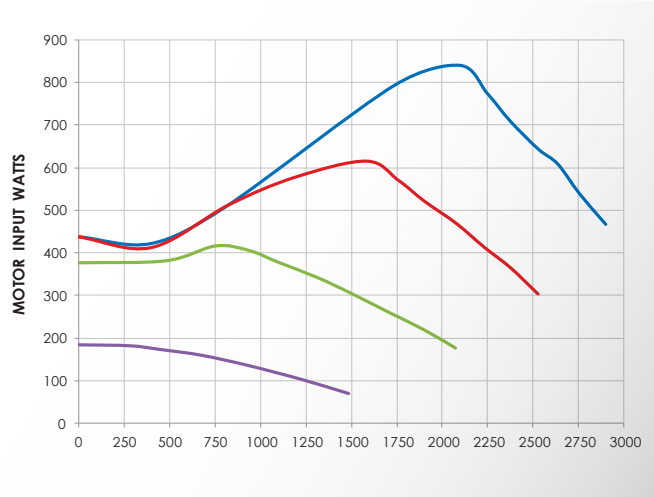
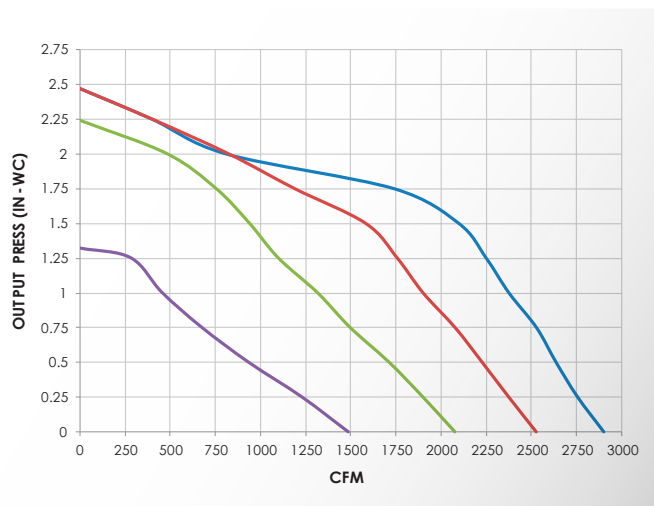
REGAL

www.regalbeloit.com

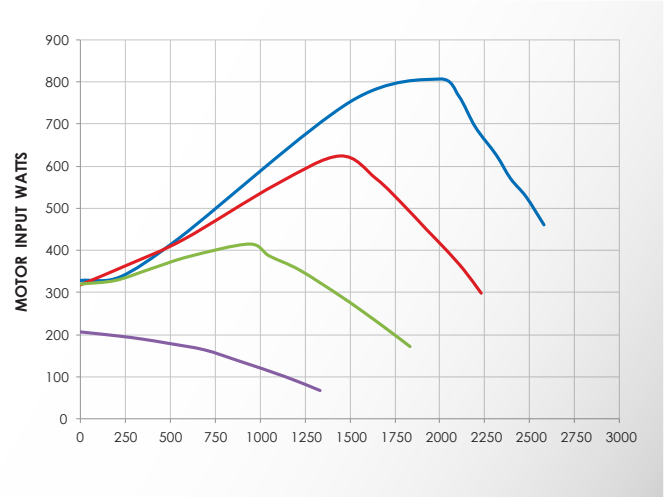
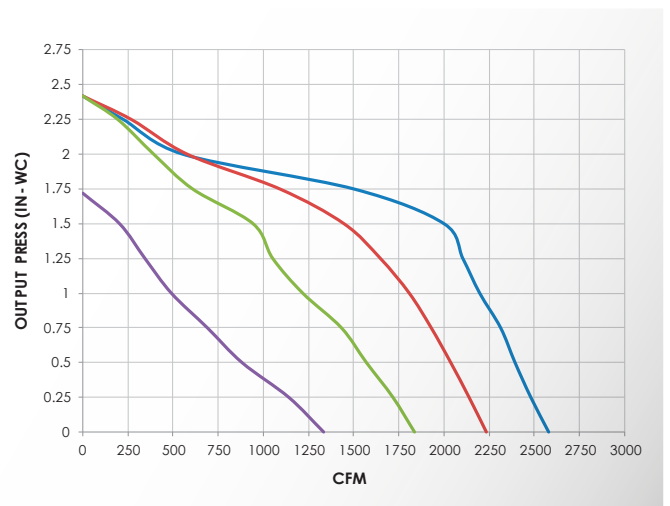


DECSTAR

TOX10 PERFORMANCE CURVES



TOX8 PERFORMANCE CURVES



- 100% Torque
- 75% Torque
- 50% Torque
- 25% Torque

1946 West Cook Rd
 Fort Wayne, IN 46818
 PH: 260-416-5400
 FAX: 260-416-5499

thedealertools.com

©2013 Regal-Beloit Corporation

A Regal Brand



www.regalbeloit.com