

Divin' In – Wednesday Night Bible Study

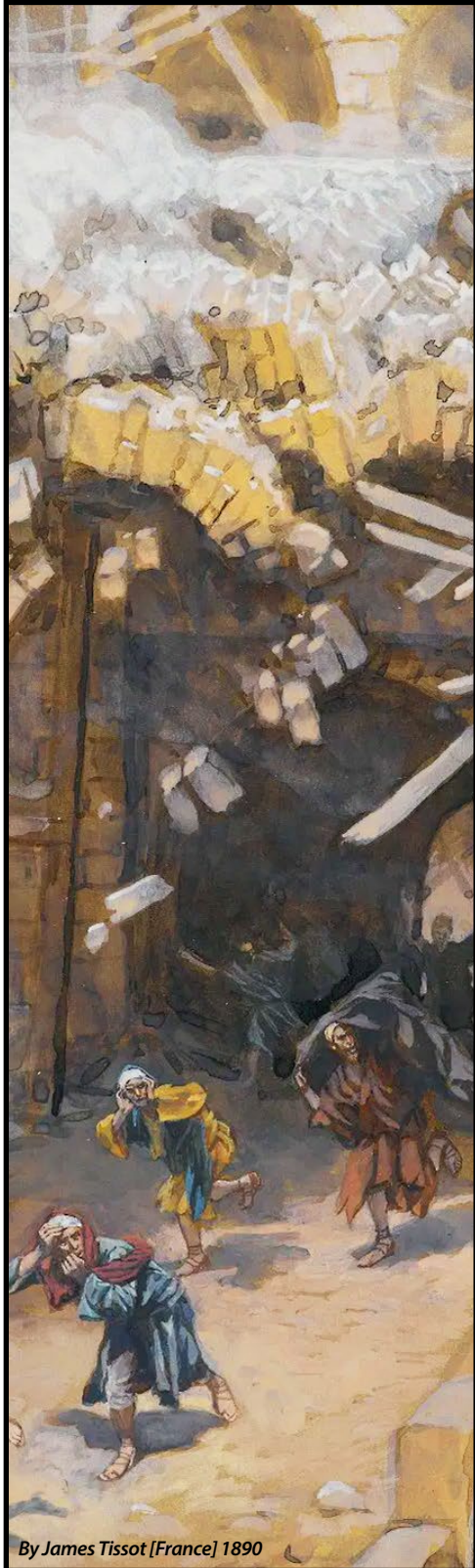
THE CHURCH OF THE SPRINGS – 6/18/25



Luke 13:4 ERV “And what about those 18 people who died when the Tower of Siloam fell on them? Do you think they were more sinful than everyone else in Jerusalem?”

ERV

Why did God allow this?!



Luke 13:1-5 CSB [natural OR – man-made]

“Some who were present on that occasion told Jesus about the Galileans whom Pilate had **killed** while they were offering sacrifices. He replied, ‘Do you think the suffering of these Galileans proves that they were more sinful than all the other Galileans? No, I tell you, but unless you **change** your hearts and lives, you will die just as they did. What about those 18 people who were killed when the Tower of Siloam fell on them? Do you think that they were more **guilty** of wrongdoing than everyone else who lives in Jerusalem? No, I tell you, but unless you change your hearts and lives, you will die just as they did.’”

John 9:2-7 NLT

“‘Rabbi,’ [Jesus’] disciples asked Him, ‘why was this man born **blind**? Was it because of his own sins or his parents’ sins?’ ‘It was not because of his sins or his parents’ sins,’ Jesus answered. ‘This happened so the **power** of God could be seen in him. We must quickly carry out the tasks assigned us by the One who sent us. The night is coming, and then no one can work. But while I am here in the world, I am the **light** of the world.’” Then [Jesus] spit on the ground, made mud with the **saliva**, and spread the mud over the blind man’s eyes. [Jesus] told him, ‘Go wash yourself in the pool of Siloam’ (Siloam means ‘sent.’). So the man went and washed and came back seeing!”

4 Assumptions that Jesus declares as wrong:

- 1) Suffering is proportional to **sinfulness**. [L13:3]
- 2) **Tragedy** is a sure sign of God’s judgment. [L13:4]
- 3) Bad things only happen to **bad** people. [J 9:3]
- 4) We have the **right (authority)** to make such judgments. [L13:5]

The CORRECT response is **self-examination**.

2 Corinthians 13:5 LSB

“Test yourselves to see if you are in the faith; **examine** yourselves! Or do you not recognize about yourselves that Jesus Christ is in you—unless indeed you **fail** the test?”

Galatians 6:3-5 NLT

“If you think you are too important to help someone, you are only fooling yourself. You are not that **important**. Pay careful attention to your own work, for then you will get the satisfaction of a job well done, and you won’t need to **compare** yourself to anyone else. For we are each responsible for our own conduct.”

Lamentations 3:40 ESV

“Let us test and examine our ways, and **return** to the Lord!”

Psalms 139:23-24 NLT

“Search me, O God, and know my heart; test me and know my **anxious** thoughts. Point out anything in me that **offends** you, and lead me along the path of everlasting life.”

1 Peter 2:1-2 CSB

“Therefore, **rid** yourselves of all malice, all deceit, hypocrisy, envy, and all slander. Like newborn **infants**, desire the pure milk of the Word, so that by it you may grow up into your salvation....”