

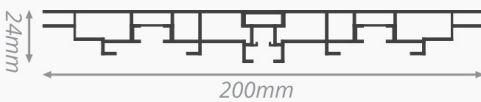
# Lightbox Double 200

Double-sided LED frames

- NF-042000
- NF-212000
- NF-562000
- Any colour possible

## Specifications

- 200 mm
- 📦 2.873 kilos/metre
- ↗ 6150 mm
- 💡 Illuminated
- © CE certified
- ✓ Two-year warranty



## About the Lightbox Double 200

This extra sturdy double-sided illuminated profile has been specially designed for illuminating extremely large-format textile prints and is a real all-rounder. Available with side lighting and backlit illumination.

## The advantages

- ✓ Suitable for extra large formats
- ✓ LED technology: edge-lit and LED on Stabilizer
- ✓ Even light distribution
- ✓ Two-year warranty



Lightbox Double 200 Double-sided LED frames

# Mounting



## Freestanding

Freestanding frame with a textile on both sides.



## Attached to the ceiling

Frames suspended from the ceiling. Both horizontal as well as vertical suspension is possible.

---

# Finish



## Closed

An even finish. If desired, holes can be drilled in the profile so that accessories can be attached.

# Illumination



## Edge-lit

- lit from the edge
- Good quality/price ratio
- Compactly packed, economically transportable
- Relatively low power consumption



## LED on Dibond

- Even light distribution due to backlighting
- Suitable for small and medium sized frames
- Narrow frames possible
- Quick installation due to pre-assembled frame



## LED on Stabilizer

- Even light distribution due to backlighting
- Suitable for small and large frames
- Compactly packed, economically transportable
- Relatively low power consumption

---

# Brightness



## Bright LED

- Most common brightness
- Even distribution of light
- Relatively low power consumption



## Super Bright LED

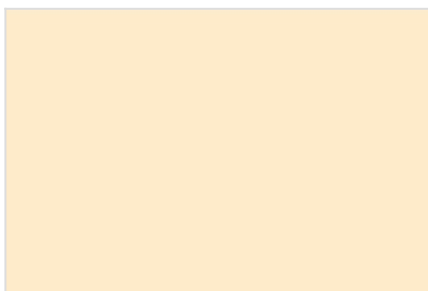
- Distinctive and impressive luminosity
- Dimmable, DALI dimmable, and non-dimmable
- Suitable for ceiling lighting
- Suitable for single-coloured and white textiles

# Lightcolour



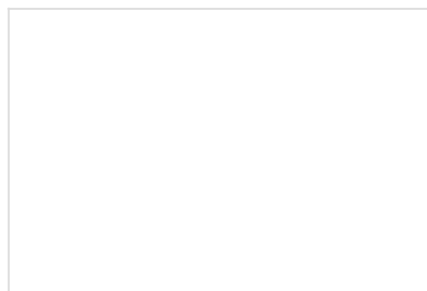
**3000K**

Warm white.



**4000K**

Yellow white.



**6500K**

Bright white (daylight).

---

# Dimmable



**Dimmable**

The brightness of the LED frame can be adjusted with a dimmer. This way, the light intensity can be determined depending on the environment.



**DALI dimmable**

The LED frame is prepared for a connection to a DALI system.

# Dimmer



## Dimmer

The LEDs have white colours. The three most commonly used colours are: warm white, yellow white and bright white.



## Dimmer RGB

It is possible to form all colours with the LED frame.

---

# Stabilizers

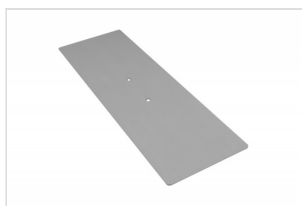


## Stabilizers

In order to guarantee the stability of the frame, stabilizers must be placed in the frame. This way the construction is sturdy.

# Recommended accessories

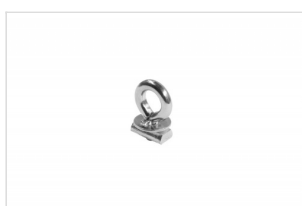
## Baseplates



**Baseplate D200**

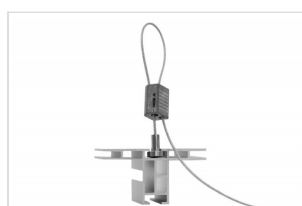
FK-0140

## Ceiling mounts



**Ceiling mount**

FK-0360



**Suspension cable**

FK-7900

## Connectors



**Frame Connector**

FK-0668

## Locksets



**Lockset 200**

FK-0230



**Lockset stabilizer**

FK-0220



**Lockset mini stabilizer**

FK-0220S



**Lockset stabilizer 45°**

FK-0222

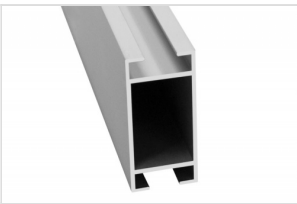
## Extension sets



**Extension set 200**

FK-0530

## Stabilizers



**Stabilizer 43**

NF-04438



**Mini stabilizer**

NF-56240

## Led-componenten



**Powered 3LEDs**

AF90-016



**Powered 6LEDs**

AF90-017



**Powered 9LEDs**

AF90-015



**Powered 3LEDs**

AF90-040

## Led-strips



**Powered 6LEDs**

AF90-045



**2.1W / 24V (47 cm)**

AF90-035



**FK7 12LEDs**

AF92-020



**FK7 2LEDs**

AF92-005

## Controllers



**LED controller  
dimmer**

AF92-220

## Drivers



**Led driver 24V/30W  
with cable**

AF99-338-WC



**Led driver 24V/60W  
bulk**

AF99-340-BP



**Led driver 24V/60W**

AF99-340



**Led driver 24V/60W  
with cable**

AF99-340-WC