

Also Available in

Clarion PAL e-DRP 2 digital ray path technology lens is available with world's most useful technologies that gives you extra features in the eyewear world.

POLARISED / DRIVE WEAR

MR-8 , MR-10 , MR-74

FOTO-CHROMATIC

POLYCARBONATE

BLUE FIGHTER (BLUE CUT)

TRANSITION GEN 8

ABOUT CLARION LENSTM

Clarion Vision lenses are free-form lenses that are designed using advanced digital technology to provide the wearer with the highest level of vision clarity and comfort. Clarion Vision lenses are available in a wide range of materials, coatings, and tints to meet the specific needs of each individual. The company offers a variety of lens designs, including single vision, progressive, and specialty lenses, that are tailored to the specific needs of each patient.

There are many advance design in
Clarion PAL Series, C360, ID & IDv.

www.clarionvision.it

COPYRIGHT© 2015-2024
CLARION VISION CENTER - ALL RIGHTS
RESERVED.



Powered By Roger Becon® Italy

DIGITAL RAY PATH TECHNOLOGY



E-DRP 2

CLARION PAL SERIES



COMFORTABLE
READING

01.

Pushing the limits of geometry in lens personalization

Digital Ray-Path 2 pushes the limits of geometry in lens personalization by incorporating the wearer's accommodative capacity in the final lens calculation to further minimize oblique aberrations.

Oblique aberrations, found in any lens, include astigmatic and spherical power errors. These errors create an out-of-focus image as the wearer's gaze moves away from the optical center of the lens. Eliminating them completely is not mathematically possible. Some residual power error remains, causing a slight blur.

02.



INSTANT
FOCUS

03.



WIDER
DISTANCE

WELL BALANCE

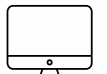
Advantages

- Accurately Balance design for comfortable near & far vision at all ranges.

Features Multifocal ✓



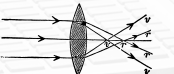
Near vision



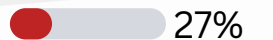
Intermediate



Far vision



Aberration



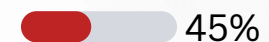
Digital devices-Reading



Aesthetic



Sports



Driving

