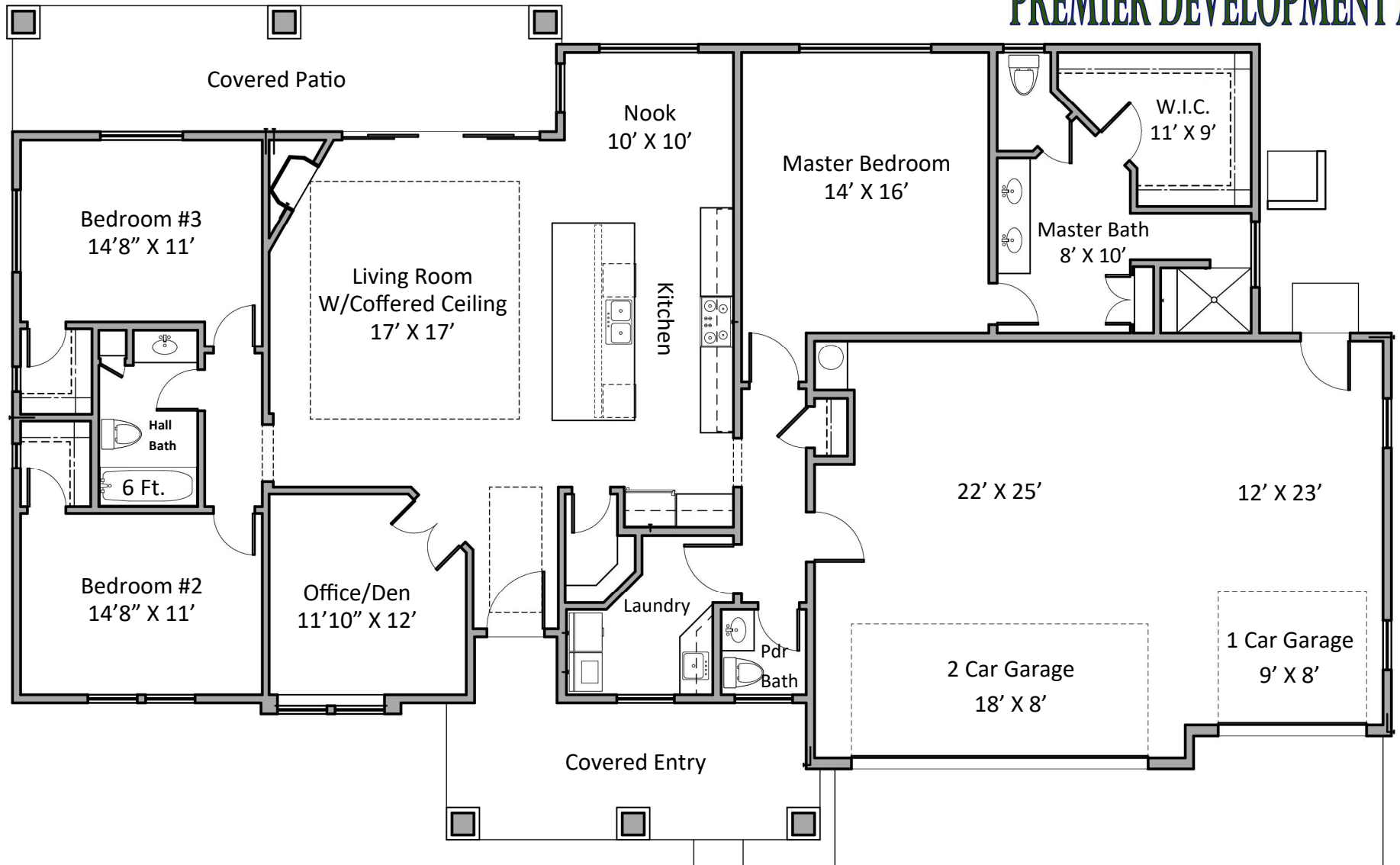


Plan 2244



- * 2244 Sq.Ft. * Great Room - with Gas Fireplace * 3 Bedrooms * Office/Den
- * 2.5 Baths * 3 Car Garage * Coffered Ceiling in Living Room

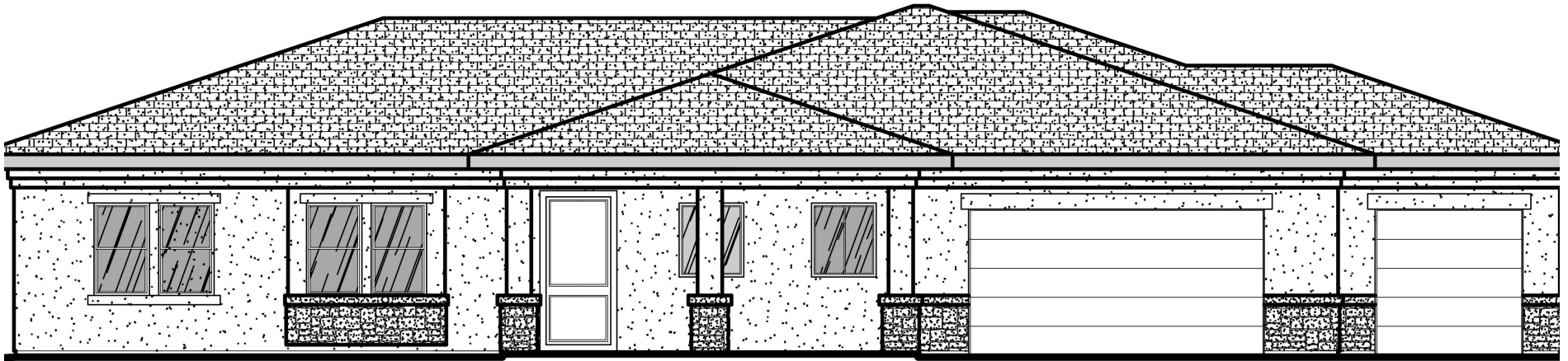


Premier Development AZ LLC, an Arizona limited liability company, reserves the right to make changes and substitutions to features as it deems necessary. Floorplan drawing is artist rendition and subject to change without notice. Dimensions are approximate. Members of the selling entity are licensed Real Estate Brokers in the state of Arizona.

Premier Development AZ LLC - ROC #278145



Plan 2244



Plan 2244 - Elevation "A"