

THE PORCH

Newsletter of the Presbyterian House
Chautauqua Institution
www.presbychq.org
716 581-0998 • P. O. Box 1007
Summer 2024



Greetings and Welcome Back to The Presbyterian House for Our 2024 Season

“The God of Peace be with all of you.” Romans 15:33

The Presbyterian Association joins in celebrating the Sesquicentennial of the founding of Chautauqua Institution and the theme of *The Seasons and Stories of Chautauqua*. Inventor Lewis Miller and Methodist Bishop John Heyl Vincent had a vision of establishing a summer training camp for Sunday School teachers. This dream became a reality in the summer of 1874, when the first guests arrived by steamship on the shores of Chautauqua Lake. Eventually, the single “pillar” of Religion was expanded to encourage the four pillars of Arts, Education, Recreation, and Religion.

We encourage our guests and friends to participate in the sesquicentennial activities by:

1. Record your “Chautauqua Story” for the StoryCorps Archives.
<https://storycorps.org/chautauqua-institution/>
2. Attend the Chautauqua Lecture Series centering on various aspects of the Institutions history and extended impact, and the “Pillar Talks” at 3:30 p.m. during Weeks 3,4,5, 7 and 8. These lectures will focus on the four pillars through the eyes of former Chautauqua leaders.
3. Take advantage of at least one of the many special tours such as the daily bus tours of the grounds, weekly tours of the Athenaeum Hotel, the Miller-Edson cottage, the Ellen Biddle Shipman – inspired garden at the Miller-Edson cottage and the Cottage tours offered Tuesdays and Thursdays.
4. Don’t miss a very special Old First Night celebration the first Tuesday of August. After the traditional program in the Amphitheater, enjoy a giant birthday cake on the porch of the Athenaeum Hotel and view a drone firework display over the lake.
5. And many others ... consult the *Chautauquan Daily* for details.

(article continues on the next page)

Inside this issue

A Word from Our Managers	3
Building & Grounds News.....	5
Did You Know?	7
Current Board of Trustees	8
Pres. Assoc. Annual Meeting	9
Chaplains for 2024 Season.....	10

www.presbychq.org

We welcome all Chautauquans to continue celebrating our 141st year by:

1. Joining us for coffee, tea, or hot cocoa every weekday morning between the morning worship and the 10:45 a.m. lecture. Make new friends and renew established ones.
2. Worshipping at 9:30 a.m. Sundays in our chapel. Our services are led by Presbyterian clergy from throughout country.
3. Learning and expanding your horizons at our Vesper experience at 7 p.m. Thursdays in our chapel.
4. Enjoying a quiet moment on our front porch.

May you find renewal in this special institution on the lake that is “dedicated to the exploration of the best of human values and the enrichment of life.” We invite you all to find time to stop by in your busy day and enjoy the hospitality of the Presbyterian Association.

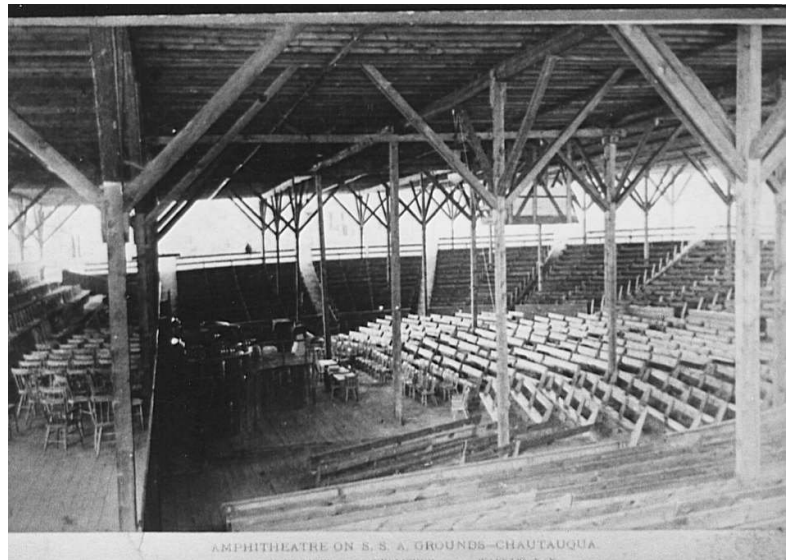
Blessings,

Meg Viehe, President, Board of Trustees
Presbyterian Association of Chautauqua, New York



Founders of what is now the
Chautauqua Institution:
Inventor Lewis Miller and
Methodist Bishop John Heyl Vincent.

Steamship arriving on the shores of
Chautauqua Lake with the first guest.



Amphitheatre on the grounds of Chautauqua Institution.



Welcome Back to Chautauqua for Our 2024 Season!

A Message from Our House Managers: Jo Wolfe and Kathy Taylor

Jo Wolfe is pleased to serve again as House Manager for the 2024 Season. Jo is from nearby Kane, Pennsylvania where she is a member of The Presbyterian Church of Kane. In addition to her church activities, Jo volunteers as a Court Appointed Special Advocate (CASA) and is president of the board for the Kane Area Children's Museum. Her hobbies include swimming, playing the piano, and reading. In the off-season, Jo works at the PA Wilds Conversation Gift Shop at the Kinzua State Park as a Community Connector.



Jo Wolfe

We invite our guests to engage with the amazing staff who come to these grounds from Los Angeles to New York City and places in between. Over half of the 2023 staff has returned plus almost a dozen new individuals who are all committed to providing benevolent service to the guests.

Jo and Kathy welcome everyone to our Sunday service at 9:30 a.m. in the Chapel. All are welcome to share in this time of worship. Join

us for Coffee Hour on the main porch following the Sunday Chapel service and each weekday morning following the Ecumenical service in the amphitheater. This is a wonderful opportunity to mingle with friends old and new. Come to the Friday Afternoon Social Hour in the Living Room at 4:30 p.m. where you can enjoy delicious appetizers, a cool refreshment, and live music provided by the staff.

During your stay at the Presbyterian House, we hope you experience the spirit of hospitality and fulfill the mission of Chautauqua Institution by exploring the best in human values through religion, the arts, education, and recreation.

We look forward to meeting you on the porch!

Jo Wolfe
House Managers

Kathy Taylor
Assistant House Manager



Kathy Taylor

See how good, how pleasant it is for God's people to live together as one! ~Psalm 133: 1

A Brief History of The Presbyterian House

The Presbyterian Association of Chautauqua, New York has been active since 1883.

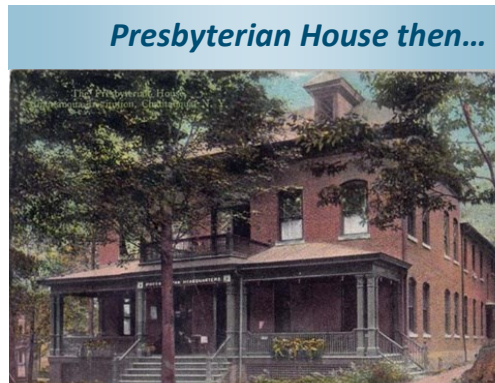
The construction of the Presbyterian House, the first brick building on the grounds, was begun in 1889, expanded in 1908 and designated an Historical Site in 1987 by the Philadelphia



...and now

Philadelphia

Presbyterian Historical Society. In 1927, the Mary Willis House was willed to the Association by Mrs. O. G. Franks and occupied until 2004, when the house was sold.



Presbyterian House then...

To meet the need for more affordable housing, a process was begun in 1999 to expand the existing Presbyterian House. A hospitable environment, in which a multigenerational group of people could

experience Chautauqua was the goal. The expanded Presbyterian House was completed and opened in June 2004. The Mary Willis House Wing is part of this expanded facility.

Guest charges are kept to a minimum through contributions to the Association from faithful members and friends. No support is received from any board of the Presbyterian Church.

From the Presbyterian Association of Chautauqua website

The Stephen Phillips Scholarship Fund

The Stephen Phillips Memorial Scholarship is a fund established by Mrs. Betty Phillips in memory of her husband to enable young Presbyterian clergy families to experience a week at Chautauqua while staying at the Presbyterian House. Families selected receive room and board at the Presbyterian House, gate tickets for the pastor and spouse, and enrollment for the children in Children's School, or Boys Club and Girls Club according to the children's ages.

As a part of your contribution to the ministry of the Presbyterian Association of Chautauqua, please consider a gift to this special scholarship fund. The scholarships are not only a gift to these young families, the families are also a gift to us all, blessing us in many ways by their presence among us.

This summer we have three young families who will be experiencing and enjoying Chautauqua thanks so this wonderful scholarship. Application forms may be picked up in the Presbyterian house during the summer or found on our website, if you have a minister to recommend for this scholarship for the 2025 season.

-Alice Hood, Chair
Affordable Housing Committee

**MAKE A DIFFERENCE.
DONATE TODAY.**

Buildings and Grounds News

We are pleased to announce 3 terrific additions to our house:

- ◆ Piano and Bench (we would be very pleased to accept any donations of music)
- ◆ Our manager Jo Wolfe found an appropriate and much needed piece of furniture for the dining room.
- ◆ And most importantly an accessible Ramp to the front porch. (The bricks that needed to be removed for this project will have a new prominent place)



- ◆ Replacements and Repairs:
 - ◆ Janes Avenue back porch
 - ◆ New Roof, Gutters, and Dormer
 - ◆ Repairs to the Library
 - ◆ New Compressor and Boilers
 - ◆ Side Door Entrance and Lighting
 - ◆ Front Door
 - ◆ New Carpet in all Bedrooms and Hall
 - ◆ 2nd floor (older building)

It has been a busy year, our committee hopes you will enjoy these additions and enhancements.

Submitted by Chairman of the Building and Grounds Committee,
Marty Davis

Consider Becoming a Member of the Presbyterian Association

For just \$20 not only will you receive a free PH coffee mug, but you will be supporting our vibrant community of faith, which encourages hospitality and fellowship at our daily porch coffee hours and offers affordable housing on the grounds. Please stop by and join us....all are welcome!

Welcoming Volunteers to Serve as Trustees

Would you be interested in serving or recommending someone to serve as a trustee of the Presbyterian House? Trustee terms are limited and staggered, therefore there is a frequent need for new members. Terms are generally three years, and there are about four meetings per summer. Board of Trustee members are responsible for setting policies and may also serve on two sub-committees of the board. Consider volunteering to be a part of the long and rich history of this denominational house at Chautauqua.

Please join us for 10:15 a.m. weekday coffee on the porch. Further information is available there from current board members or the House Manager. Emails of interest may also be sent to the Nominations Committee at jayarthursummerville@gmail.com.





A Community of Presbyterians at Chautauqua

Our Mission

A HOUSE . . .

“Building on the history begun in 1883 to welcome Presbyterians to Chautauqua and to house missionaries for summer institutes, the Presbyterian Association

- includes all persons in our welcome,
- provides excellent weekly accommodations and meals at prices made affordable by generous donors.”

AND A COMMUNITY . . .

“Creating a Presbyterian presence through worship, study and hospitality, the Presbyterian Association

- shares our beautiful and functional facility,
- contributes financially to Chautauqua Institution and surrounding community,
- works in cooperation with denominational houses and religious communities.”

The famous Presbyterian Mocha Coffee along with other drinks attract many visitors to the porch every weekday morning between morning worship and the 10:45 a.m. lecture in the Amphitheater.

In support of our mission, the Presbyterian Association

1. Provides affordable accommodations – all guest stays are subsidized.
2. Maintains the historic 1889 Presbyterian House at 9 Palestine Ave.
3. Welcomes a Chaplain of the Week who leads a Sunday worship and Thursday Vespers.
4. Offers hospitality to Presbyterians and others on our porches and living spaces.
5. Underwrites an annual afternoon lecture at the Hall of Philosophy.
6. Extends our facilities to the broader Chautauqua community that support our values.
7. Serves the community by providing an accessible facility with proximity to the Amphitheater.

Presbyterian House Facts



- According to an informal poll, mocha and hot chocolate are the most popular drinks at the morning “coffee” hour.
- The HVAC system is a large-scale geothermal heat pump with thirteen 330-foot wells drilled in the street between the addition and the Athenaeum.
- When the addition was built, it was the most energy efficient building in all western New York, and the Presbyterian Association received a very large grant as a result.
- Isabella Macdonald Alden, author of the Pansy books (“Four Girls at Chautauqua,” etc.), raised and donated money for the original house. She turned over the first shovel of dirt at the dedication of the house. The books are said to have given an important impetus to the success of Chautauqua in the late 19th and early 20th centuries.
- What can one hear sitting on the porch? Morning worship, the 10:45 a.m. lectures, orchestra rehearsals and concerts, Sunday morning service, the Sunday afternoon concerts, the Sacred Song services.
- Contributions to the House are used for keeping our rates reasonable for all our guests.
- Built in 1889, the Presbyterian House was the first brick building on the Chautauqua grounds. {This fact is questionable}
- The Presbyterian Historical Society has recognized the house as a Presbyterian and Reformed Historical Site.



Presbyterian Association Board of Trustees

Class of 2024

Paul Burkhardt
Debbie Grohman
Margaret Minor
Louise Musser
Amy Riley
Mary Lee Talbot
Meg Viehe
Nancy Waasdorp
Chris Martin, co-op

Class of 2025

JoAnn Borg
Steve Brown
Bill Dawson
Wendy Heinz
John Morgan
Curtis Paul
Jay Summerville

Class of 2026

Betsey Crimmins
Mary Davis
Diane Hess
Alice Hood
Bruce Johnson
Judith Rietz
Cynthia Strickland
Dede Trefts

Ex Officio

Kathy Taylor
JoAnn Wolfe
Gwynneth Tigner

The Legacy Society of the Presbyterian Association of Chautauqua



It was wonderful this past season to hear voices in our halls, in the parlors, on our porches, around the tables in the dining room. The pandemic had retreated enough to allow us to have a mostly familiar time to be together, though we missed our Canadian friends.

As we look forward to this season, the House again welcomes all. We don't know if any restrictions will be on the Assembly or the House for that matter.

But we will gather as we can to be part of a congregation founded on love and faith.

The House again this past year had to rely on substantial help from the endowment. It is well managed but ultimately dependent on generosity of others, primarily in the form of bequests to provide for the House and scholarships for young ministers with families.

The Legacy Society's purpose is to continue to secure the House's future by encouraging people like you to consider it in your estate plans. If you do, please let us know.

We can give you more information including a codicil template that can easily be completed and attached to your will. We would also like to honor you with a personalized brick on the entrance to the House. Please contact Chris Martin, (csmprov@aol.com) or Dede Trefts, (dtrefts@yahoo.com)

Members of the Estate Planning Subcommittee are:

Chris Martin, Ralph Leatherman, Bruce Archibald, and John Morgan.



We welcome our house guests and their friends to enjoy any one of our 4 porches. Another choice is our updated outside patio, a wonderful space to enjoy your early morning coffee, bag lunch or an afternoon ice cream.

Marty Davis, PH Board Member

Presbyterian House Development

Since 1883, we have been sustained by the generosity of generations of Chautauquans. These gifts have enabled us to provide affordable housing, while creating a Presbyterian presence on the grounds through worship, study and hospitality.

We also offer financial aid to Presbyterian clergy families who would be unable to visit without assistance.

As we strive to build on the foundation laid before us, we are reminded of the words from Psalm 100, "*For the Lord is good; God's steadfast love endures forever, and God's faithfulness to all generations*".



Stay Informed of Presbyterian House News and Activities

• Signup to receive Our Email Correspondence

We encourage you to stay connected to Presbyterian House by signing up for our email correspondence list. Go to presbychq.org/contact-us and sign up today.

• Follow Us on Facebook

Presbyterian House has a new Facebook page. This is a great way to see the activities going on and share pictures of your experience. facebook.com/Presbyterian-House-of-Chautauqua-NY-102082122027974 and follow us today!

• Check Out Our Website!

There is so much you can learn and do on the Presbyterian House website page at presbychq.org/. Find reservation forms for next season, nominate a chaplain for 2024, find out how you can give to the Legacy Fund, and become a member of the Presbyterian Association.



2024 Annual Meeting of the Presbyterian Association

Thursday, July 25

4:00 p.m.

Chapel of the Presbyterian House

**Reception to follow
in the lower patio garden.**

Mark Your Calendars to Join us on the Porch
**Weekly Opportunities to Worship & Fellowship Together
at The Presbyterian House**

SUNDAY	MONDAY-FRIDAY	THURSDAY	FRIDAY
9:30 a.m.	10:15—10:30 a.m.	7:00 p.m.	4:30 p.m.
Morning Worship	Coffee on the Porch	Evening Vespers	Social Hour
PH Chapel	PH Porch	PH Chapel	Living Room

Nominate a Chaplain for the 2025 Season

To nominate an ordained Presbyterian Minister of Word and Sacrament for a week as chaplain for the Presbyterian House go to <https://presbychq.org/nomination-form> on the Presbyterian House website.

You may also pick up a nomination form in the office. This must be a first visit to the grounds for the nominee.



2024 Season Chaplains of the Week at Presbyterian House

Week 1 – June 22 to June 29

Rev. Keli Cooper

St. Paul's Episcopal Church, Richmond VA

Week 2 – June 29 to July 6

Rev. D. Mark Davis

St. Marks Presbyterian Church, Newport Beach CA

Week 3 – July 6 to July 13

Rev. Dr. Paul Junggap Huh

United Presbyterian Church of Walton, NY

Week 4 – July 13 to July 20

Rev. Larissa Kwong Abazia

Executive Director of Next Church

Week 5 – July 20 to July 27

Rev. Candace Whitman

Pastor-at-Large, Presbytery of Long Island, NY

Week 6 – July 27 to August 3

Rev. Caroline Kelly

Grace Presbyterian Church, Tuscaloosa AL

Week 7 – August 3 to August 10

Rev. Pam Hrcir

Williamsburg Presbyterian Church, VA

Week 8 – August 10 to August 17

Rev. Lauren Ramseur

Voices of Jubilee, Richmond VA

Week 9 – August 17 to August 24

Rev. Rebecca Barnes

Presbyterian Hunger Program, Louisville KY

Wondered What Chaplain of the Week Entails?

- ⇒ Lead Sunday morning worship service: 9:30 a.m. in the Chapel of Presbyterian House.
- ⇒ Lead a devotion or Bible/topic study hour on Thursday evening: 7:00 p.m. in the Chapel of the Presbyterian House.
- ⇒ Greet at the morning coffee hour, Monday through Friday, following the amphitheater devotional service: 10:00 to 10:45 a.m. (approximately) on the porch of the Presbyterian House.
- ⇒ Returning thanks at each meal.