

The Porch

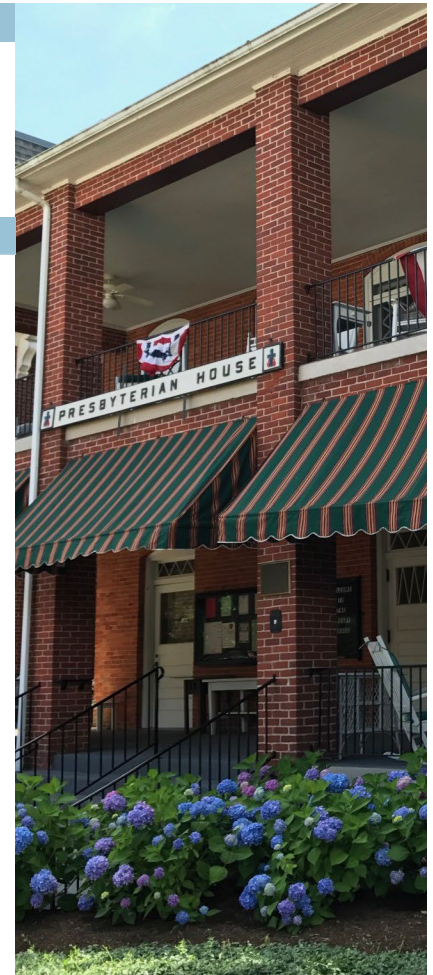
Newsletter of the Presbyterian House

Chautauqua Institution

www.presbychq.org

716 581-0998 • P. O. Box 1007

Summer 2026



Greetings and Welcome to The Presbyterian House for Our 2026 Season

“Welcome one another as Christ as welcomed you, for the glory of God.” Romans 15:33

Welcome! We’re grateful you’re here—whether in person or in spirit.

Recently, I asked a friend what the Presbyterian House means to her. Here’s what she shared:

“The Presbyterian House at Chautauqua feels like home. I love the shared spaces—porches, and the family room with game and puzzle tables. The family-style meals mean we get to make new friends and reconnect with those we’ve shared weeks with before. In an ever-more disconnected world, the Presbyterian House creates a community of belonging; it is the heart of what Chautauqua is meant to be.”

What does the Presbyterian House mean to you? For me, it’s a community where I feel a sense of belonging—and that community includes you: past and present guests, staff, board members, and visitors. Rooted in Christian hospitality, we welcome, host, and care for one another with generosity, kindness, love, and good cheer. As we practice hospitality together, we create space for divine encounters, spiritual growth, and lasting relationships.

This summer is our 143rd year of service on the grounds of Chautauqua. I invite you to enjoy all the Presbyterian Association offers by:

- Enjoying Coffee on the Porch each weekday from 10:00 to 10:45 a.m. Coffee, tea, hot chocolate, lemonade, and our guest-favorite mocha are available—and it’s a lovely time to make new friends and reconnect with familiar faces.
- Worshiping with us at 9:30 a.m. each Sunday morning in the house’s air-conditioned Chapel. You can expect something inspiring, offered to the glory of God. Services are led by Presbyterian clergy from across the country.
- Attending the Thursday evening Vesper Service at 7:00 p.m. in the Chapel, led by the house’s Chaplain of the Week, for a time of spiritual nourishment.

(article continues on the next page)

Inside this issue

A Word from Our Managers	3
Building & Grounds News	5
Did You Know?	7
Current Board of Trustees.....	8
Annual Meeting.....	9
Chaplains for 2026 Season	10

www.presbychq.org

- Taking a break for Lemonade and Cookies on the porch from 3:30 to 4:30 p.m. on July 14 and August 11. Introduced last year, it is a welcome pause in the middle of a full Chautauqua day.

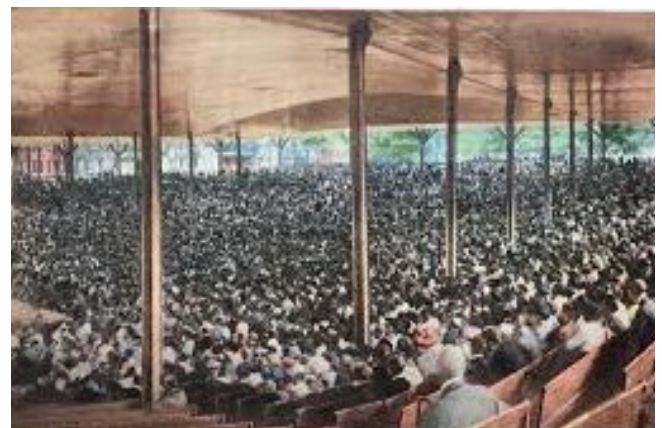
As my friend said, “the Presbyterian House feels like home.” What makes it feel like home to you? For me, it’s the sense of belonging shaped by shared and personal spaces, treasured memories, familiar scents and sounds, and friends who feel like family.

Over the years, everyone who has passed through our doors has encountered remarkable people who inspire and uplift. Truly, we are a wonderful community—near and far, past and present. I hope your memories of the Presbyterian House bring warmth to your spirit. If you’re a guest or staff member this summer, I pray that you find renewal and hope simply by being here. And if you won’t be staying with us, please stop by, introduce yourself, and experience the friendliness that makes the Presbyterian House so special.

The staff, Board, and I look forward to welcoming you.

Sincerely,

The Rev. Dr. Betsey R. Crimmins, ACC, HPP, HR
 President, Board of Trustees of the Presbyterian Association of Chautauqua



“Like a family reuniting at home... the Chautauqua Amphitheater is America's living room. A place to which we return in moments of challenge and joy, to pause, connect and think.”
 -Kevin Gaughan
 Buffalo, NY Civic Leader



AMPHITHEATER, CHAUTAUQUA INSTITUTION

Top left-date unknown

Top right-1914

Bottom-present day

Postcards The Chautauqua Institution

Welcome to Chautauqua for Our 2026 Season!

A Message from Our House Managers: Jo Wolfe and Kathy Taylor



It is our goal that folks who step onto the porch at the Presbyterian House feel not only welcomed but that they belong. We welcome you with our open arms and smiles, but we also want you to feel that you are a part of our community. The staff of the Presbyterian House aims for you to be accepted, respected, and valued.

There are 28 staff members who are returning to work at the House from previous seasons and 8 new employees. Together we seek to provide hospitality to all our returning friends and first-time guests. Check out the staff photos and information on the front porch display case.

Jo Wolfe is returning for her fourth season as Manager. When not at Chautauqua, she resides in Kane, Pennsylvania with her husband, Bob, who is also on staff. Kane is a “star in the forest” and part of the Pennsylvania Wilds. Jo left the beautiful landscape of western Pennsylvania to walk the Camino de Santiago with

Chautauqua Travels in early May. She also has adventures through reading and will graduate to the CLSC Olympian level this summer.

Kathy Taylor returns for the 2026 season as assistant manager and registrar. Kathy continues to take advantage of as many opportunities as possible that living in Washington DC provides. What a privilege to live in DC during the year and be at Chautauqua for the Summer!

Each season brings new staff working together to serve an average of 55 guests per week. This summer, our staff consists of a total of 36 individuals ranging in age from 18 to 86 years “young.” There are an average of 25 employees working each week to provide excellent meals, a sparkling clean house, and great hospitality.

We are grateful that Connie Lawson is returning as Head Cook. She has worked as an assistant cook for many years preparing breakfasts and fabulous brown bag lunches and will now be cooking the main dinner meals. Sean Sullivan, our off-season building manager, and season Sexton, has been

working diligently making necessary repairs, painting the West Wing living rooms, and getting the house ready for opening Week 1. We are thrilled to have our past friends return and to meet the new guests to the Presbyterian House.

We look forward to meeting you on the porch!

Jo Wolfe
House Manager

Kathy Taylor
Assistant House Manager



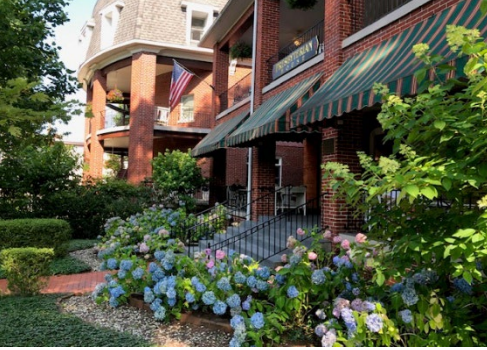
See how good, how pleasant it is for God's people to live together as one! ~Psalm 133:1

A Brief History of The Presbyterian House

The Presbyterian Association of Chautauqua, New York has been active since 1883.

The construction of the Presbyterian House, the first brick building on the grounds, was begun in 1889, expanded in 1908 and designated an Historical Site in 1987 by the Philadelphia

...and now

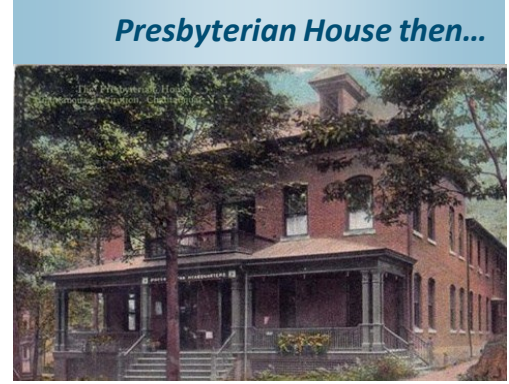


Presbyterian Historical Society. In 1927, the Mary Willis House was willed to the Association by Mrs. O. G. Franks and occupied until 2004, when the house was sold.

To meet the need for more affordable housing, a process was begun in 1999 to expand the existing Presbyterian House. A hospitable environment, in which a multigenerational group of people could experience Chautauqua was the goal. The expanded Presbyterian House was completed and opened in June 2004. The Mary Willis House Wing is part of this expanded facility.

Guest charges are kept to a minimum through contributions to the Association from faithful members and friends. No support is received from any board of the Presbyterian Church.

From the Presbyterian Association of Chautauqua website



The Stephen Phillips Memorial Scholarship Fund

The Presbyterian Association has a special fund for bringing young ministers and their families to Chautauqua Institution. The Stephen Phillips Memorial Fund Scholarship was established by Mrs. Betty Phillips in memory of her husband to enable Presbyterian pastors with young children to experience a week at Chautauqua while staying at the Presbyterian House. In addition to room and board at the Presbyterian House, the families receive gate tickets for the pastor and spouse and enrollment for the children in Children's School and Boys' Club and Girls' Club according to the children's ages. Past recipients have had special family times here while opportunities for the pastor to rest and rejuvenate are discovered.

Please encourage any young Presbyterian pastors you may know to apply for this generous award.

Applications for the Phillips Memorial Scholarship Fund can be found on the Presbyterian Association website.



-Nancy Waassorp, Chair
Affordable Housing Committee

Buildings and Grounds News

We are pleased to announce the following updates and additions to our house:

- ◆ We start the season with a refurbished staff living quarters starting in the coffee nook to the third floor, fresh paint and new carpet.
- ◆ New carpet on the Front Porch.
- ◆ New commercial dishwasher in our kitchen.
- ◆ New installations and upgrades on all heating and cooling systems.
- ◆ A sign indicating that the ramp is for pedestrian traffic and walkers only. We have an elevator on our lower level for wheelchairs and scooters. Please enter at the Chapel entrance.

Submitted by Chairman of the Building and Grounds Committee, Marty Davis



Originally built in 1889, the Presbyterian House was the first brick structure at the Chautauqua Institution.



Consider becoming a member of the Presbyterian Association

For just \$25 you will be supporting our vibrant community of faith, which encourages hospitality and fellowship at our daily porch coffee hours and offers affordable housing on the grounds. Please stop by and join us...all are welcome!

Welcoming Volunteers to Serve as Trustees

Would you be interested in serving or recommending someone to serve as a trustee of the Presbyterian House? Trustee terms are limited and staggered, therefore there is a frequent need for new members.

Terms are generally three years, and there are about five meetings per summer. Board of Trustee members are responsible for setting policies and may also serve on sub-committees of the board. Consider volunteering to be a part of the long and rich history of this denominational house at Chautauqua.

Please join us for 10:00 a.m. weekday coffee on the porch. Further information is available there from current board members or the House Manager.

Emails of interest may also be sent to the Nominating Committee at curtis.paul@newlonsburgchurch.org.

Leave Your Mark at the Presbyterian House

Would you like to create a lasting tribute or honor someone special? Consider purchasing a commemorative brick to be added to the Presbyterian House walkway.

Order forms are available at the Presbyterian House office and on our website.

If you have any questions, please contact **Kathy Taylor** at presbychqny@gmail.com or call **716-581-0998**.



Your personalized brick will help preserve memories while supporting the Presbyterian House for years to come. We look forward to helping you create a meaningful and lasting tribute.

“The cost for each brick is \$250 imprinted with up to 3 lines of 14 characters per line.”

Looking For the Perfect Place to Sit Outside and Ponder The Beauty of God’s Creation?

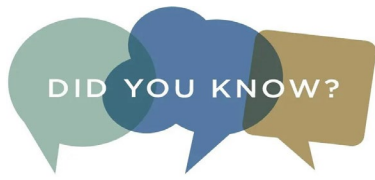


We are grateful to previous benefactors who have helped provide our house guests with a perfect place to sit outside and ponder the beauty of God’s creation. Our house guests can enjoy any of our four inviting porches or spend time in our updated outdoor patio—a wonderful place to savor their morning visiting with staff or other guests or simply looking for a peaceful spot to unwind. Our outdoor spaces offer the perfect setting to enjoy the beauty and fellowship of the Presbyterian House.

-Marty Davis, PH Board Member

Mark Your Calendars to Join Us in the Chapel and on the Porch at The Presbyterian House.

SUNDAY	MONDAY-FRIDAY	THURSDAY
9:30 a.m.	10:00—10:45 a.m.	7:00 p.m.
Morning Worship	Coffee on the Porch	Evening Vespers
PH Chapel	PH Porch	PH Chapel



Q: What are the most popular drinks at our morning “coffee” hour?

A: According to an informal poll, mocha, and hot chocolate.

Q: How can I recognize the service the staff has provided?

A: Donate to Presbyterian Association of Chautauqua.

Mark on the envelope or memo line of the check, STAFF APPRECIATION.

Q: What was the very first brick building built on the grounds of Chautauqua?

A: Built in 1889, the Presbyterian House was the first brick building on the Chautauqua grounds.

This fact is questionable. 🤔

Q: What year was the Presbyterian House updated?

A: 2004. When the addition was built, it was the most energy efficient building in all western New York, and the Presbyterian Association received a very large grant as a result.

Q: What can one hear sitting on the porch?

A: Morning worship, the 10:45a.m. lectures, orchestra rehearsals and concerts, Sunday morning service, the Sunday afternoon concerts, the Sacred Song services.

Q: What helps the Presbyterian House keep their rates reasonable year-after-year?

A: Contributions to the House are used to keep our rates reasonable for all guests.

Q: What society has recognized the Presbyterian House as a Presbyterian and Reformed Historical Site?

A: The Presbyterian Historical Society

Important Pre-registration Information for the 2027 Season

Pre-registration forms for the Summer of 2027 can be found on the last page of this issue of The Porch. Completed forms can be dropped off at the Presbyterian House Office or emailed to Kathy Taylor, Assistant Manager and Registrar, at presbychqny@gmail.com.

Please keep in mind submitting a pre-registration form does not guarantee a room, nor does it obligate you to a room reservation if your circumstances change.

Chautauqua Literary and Scientific Circle 2026 Reading List



Reading together since 1878, the Chautauqua Literary and Scientific Circle has remained a leader in adult education through quality programming. Each summer, the CLSC chooses at least nine books of literary quality and invites the authors to Chautauqua to present their work to an audience of approximately 1,000 readers.

The 2026 CLSC Theme is *Translation*. Translation is more than a rendition of words from one language to another. Translation invokes how we convey meaning to one another, person-to-person, country-to-country, and page-to-page. How does translation work? Who does the work of translation? Why is translation important? What gets lost in translation? How are ideas translated and how do they transverse borders—bodily, geopolitical, or otherwise? This year, the CLSC will explore what it means to translate and to be in translation globally, locally, and personally.

For more information about this year’s reading selections, visit www.chautauquabookstore.com

Presbyterian Association Board of Trustees

Class of 2026

- *Betsey Crimmins
- Marty Davis
- Diane Hess
- *Alice Hood
- Judith Rietz
- *Cynthia Strickland
- Dede Trefts

Class of 2027

- *Paul Burkhart
- Bill P. Follansbee
- *Louise Musser
- Pete Pedersen
- Jill Rose
- *Mary Lee Talbot
- *Nancy Waasdorp

Class of 2028

- Steve Brown
- Sylvia Faust
- Wendy Heinz
- Alan Nelson
- Kari Soffel
- Curtis Paul
- Jay Summerville

Ex Officio

- Kathy Taylor
- Jo Wolfe

*Second Term

The Legacy Society of the Presbyterian Association of Chautauqua

It was wonderful this past season to hear voices in our halls, in the parlors, on our porches, around the tables in the dining room.

The House again this past year had to rely on substantial help from the endowment. It is well managed but ultimately dependent on generosity of others, primarily in the form of bequests to provide for the House and scholarships for young ministers with families.

The Legacy Society's purpose is to continue to secure the House's future by encouraging people like you to consider it in your estate plans. If you do, please let us know.

We can give you more information including a codicil template that can easily be completed and attached to your will. We would also like to honor you with a personalized brick on the entrance to the House. Please contact Dede Trefts, (dtrefts@yahoo.com)



2026 Annual Meeting of the Presbyterian Association

Thursday, July 30

4:00 p.m.

Chapel of the Presbyterian House

Reception to follow
in the lower patio garden



Presbyterian House Development

Since 1883, we have been sustained by the generosity of generations of Chautauquans. These gifts have enabled us to provide affordable housing, while creating a Presbyterian presence on the grounds through worship, study, and hospitality.

We also offer financial aid to Presbyterian clergy families who would be unable to visit without assistance.

As we strive to build on the foundation laid before us, we are reminded of the words from Psalm 100, *"For the Lord is good; God's steadfast love endures forever, and God's faithfulness to all generations"*.

Stay Informed of Presbyterian House News and Activities

- **Become a member of the Presbyterian Association of Chautauqua and receive a Presbyterian House Lanyard!**

All it takes is an annual donation of \$25 or more. All current members, please stop by the house to pick up your PH lanyard.

- **Signup to receive Our Email Correspondence**

We encourage you to stay connected to Presbyterian House by signing up for our email correspondence list. Go to presbychq.org and click on "contact us" and sign up today.

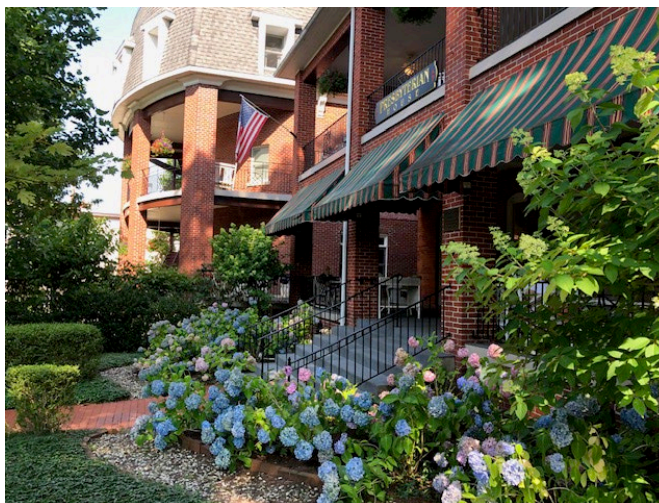
- **Follow Us on Facebook**

Presbyterian House has a new Facebook page. This is a great way to see the activities going on and share pictures of your experience.

facebook.com/Presbyterian-House-of-Chautauqua-NY-102082122027974 and follow us today!

- **Check Out Our Website!**

There is so much you can learn and do on the Presbyterian House website page at presbychq.org: nominate a chaplain for 2027, find out how you can give to the Legacy Fund, and become a member of the Presbyterian Association.



Porch Fellowship at the Presbyterian House

Lemonade & Cookies

Tuesdays, July 14 and August 11

3:30-4:30pm

We look forward to seeing you on the porch of the Presbyterian House for light refreshments, including cookies and lemonade, while enjoying a time of fellowship with one another.

This is a wonderful opportunity to relax, visit with friends, and connect with fellow guests and community members.



Nominate a Chaplain for the 2027 Season

To nominate an ordained Presbyterian Minister of Word and Sacrament for a week as chaplain for the Presbyterian House go to <https://presbychq.org/nomination-form> on the Presbyterian House website.

You may also pick up a nomination form in the office. This must be a first visit to the grounds for the nominee.



2026 Season Chaplains of the Week at Presbyterian House

Week 1 – June 20 to June 27

Rev. Magdalena Garcia

Ravenswood Presbyterian Church, Chicago, Illinois
<https://www.ravenswoodpresbyterian.org>

Week 2 – June 27 to July 4

Rev. Denise Pass

General Presbyter for Mountain Laurel Presbytery, Allentown, Pennsylvania
<https://www.mlpres.org>

Week 3 – July 4 to July 18

Rev. Dee Dee Carson

First Presbyterian Church of Virginia Beach, Virginia Beach, Virginia
<https://firstpresvb.org>

Week 4 – July 18 to July 25

Rev. Dave Bush

Okolona Presbyterian Church, Louisville, Kentucky
<https://www.okolonapres.org>

Week 5 – July 25 to August 1

Rev. Rebecca DePoe

The Presbyterian Church of Coraopolis, Coraopolis, Pennsylvania
<https://coraopolispresbyterian.com>

Week 6 – August 1 to August 8

Rev. Megan Klose

Associate Pastor
Falls Church Presbyterian Church, Falls Church, Virginia
<https://www.fallschurchpresby.org>

Week 7 – August 8 to August 15

Rev. Steve Schaick

Former USAF Chief of Chaplains
Pentagon, Arlington, Virginia
<https://share.google/n1rxvV8fHnHxcoVsj>

Week 8 – August 15 to August 22

Rev. Melissa (Lissa) Long

General Presbyter
Presbytery of Eastern Virginia, Norfolk, Virginia
pcusa-peva.org

Week 9 – August 22 to August 29

Rev. Ruth Smalt

Senior Pastor
Siesta Key Chapel, Siesta Key, Florida
<https://siestakeychapel.org>

Wondered What Chaplain of the Week Entails?

- ⇒ Lead Sunday morning worship service: 9:30 a.m. in the Chapel of Presbyterian House.
- ⇒ Lead a devotion or Bible/topic study hour on Thursday evening: 7:00 p.m. in the Chapel of the Presbyterian House.
- ⇒ Greet at the morning coffee hour, Monday through Friday, following the amphitheater devotional service: 10:00 to 10:45 a.m. (approximately) on the porch of the Presbyterian House.
- ⇒ Returning thanks at each meal.



Presbyterian Association of Chautauqua Vision and Mission Statement

OUR VISION

The Presbyterian Association of Chautauqua is characterized as having exceptional hospitality for all persons, affordable value and cultural as well as religious renewal for all who participate in its operation and programs.

OUR MISSION

The Presbyterian Association of Chautauqua provides a facility and environment offering a unique opportunity for individual growth, religious reflection and renewal that is supported by its members, generous donors, dedicated staff, and volunteers.

Its weekly operation during the summer season serves guests with housing and meals as well as accessible programming that is designed to enhance personal exploration, lifelong learning, and community engagement.



A Community of Presbyterians at Chautauqua

A HOUSE . . .

“Building on the history begun in 1883 to welcome Presbyterians to Chautauqua and to house missionaries for summer institutes, the Presbyterian Association

- includes all persons in our welcome,
- provides excellent weekly accommodations and meals at prices made affordable by generous donors.”

AND A COMMUNITY . . .

The famous Presbyterian Mocha Coffee along with other drinks attract many visitors to the porch every weekday morning between morning worship and the 10:45 a.m. lecture in the Amphitheater.

In support of our mission, the Presbyterian Association

1. Provides affordable accommodations – all guest stays are subsidized.
2. Maintains the historic 1889 Presbyterian House at 9 Palestine Ave.
3. Welcomes a Chaplain of the Week who leads a Sunday worship and Thursday Vespers.
4. Offers hospitality to Presbyterians and others on our porches and living spaces.
5. Underwrites an annual afternoon lecture at the Hall of Philosophy.
6. Extends our facilities to the broader Chautauqua community that support our values.
7. Serves the community by providing an accessible facility with proximity to the Amphitheater.

PRESBYTERIAN HOUSE PRE-REGISTRATION FOR SUMMER 2027

Pre-registration forms accepted from June 27-August 29, 2026

Please keep in mind submitting a pre-registration form does not guarantee a room, nor does it obligate you to a room reservation if your circumstances change.

Name: _____

Indicate Preferred Week/s (indicate 1st, 2nd, 3rd choice)*

Email: _____

Week #1 _____

Phone: _____

Week #2 _____

Week #3 _____

Indicate type of room:

Week #4 _____

Single/private bath _____

Week #5 _____

Single/shared bath _____

Week #6 _____

Double _____

Week #7 _____

Suite _____

Week #8 _____

Family _____

Week #9 _____

Comment(s): _____

***No more than 3 choices, please.**