



Boundary Bay Pony Club



New Parent Meeting

Welcome & Introduction

- Welcome to Boundary Bay Pony Club!
- Part of Canadian Pony Club → BC Lower Mainland Region → Boundary Bay branch
- Volunteer-run, family-supported community
- Executive: District Commissioner, ADC, Secretary, Treasurer
- Coaches: Avery, Claire, Amelia, Elie



About Our Club

- Established to give local youth access to riding, learning, and teamwork
- Last year membership: ~22 riders, ages 7–50+
- Activities year-round: Education, Quiz, PPG, Rally, Show Jump/Dressage and more!
- Focus on fun, friendship, learning, horsemanship, and responsibility
- Great opportunity to spend time and build friendships with like minded individuals



Membership Expectations

- Attend stable management classes
- Participate and support regional events when possible
- Support club activities & fundraising
- Show respect for coaches, horses, and each other
- Families contribute through volunteering

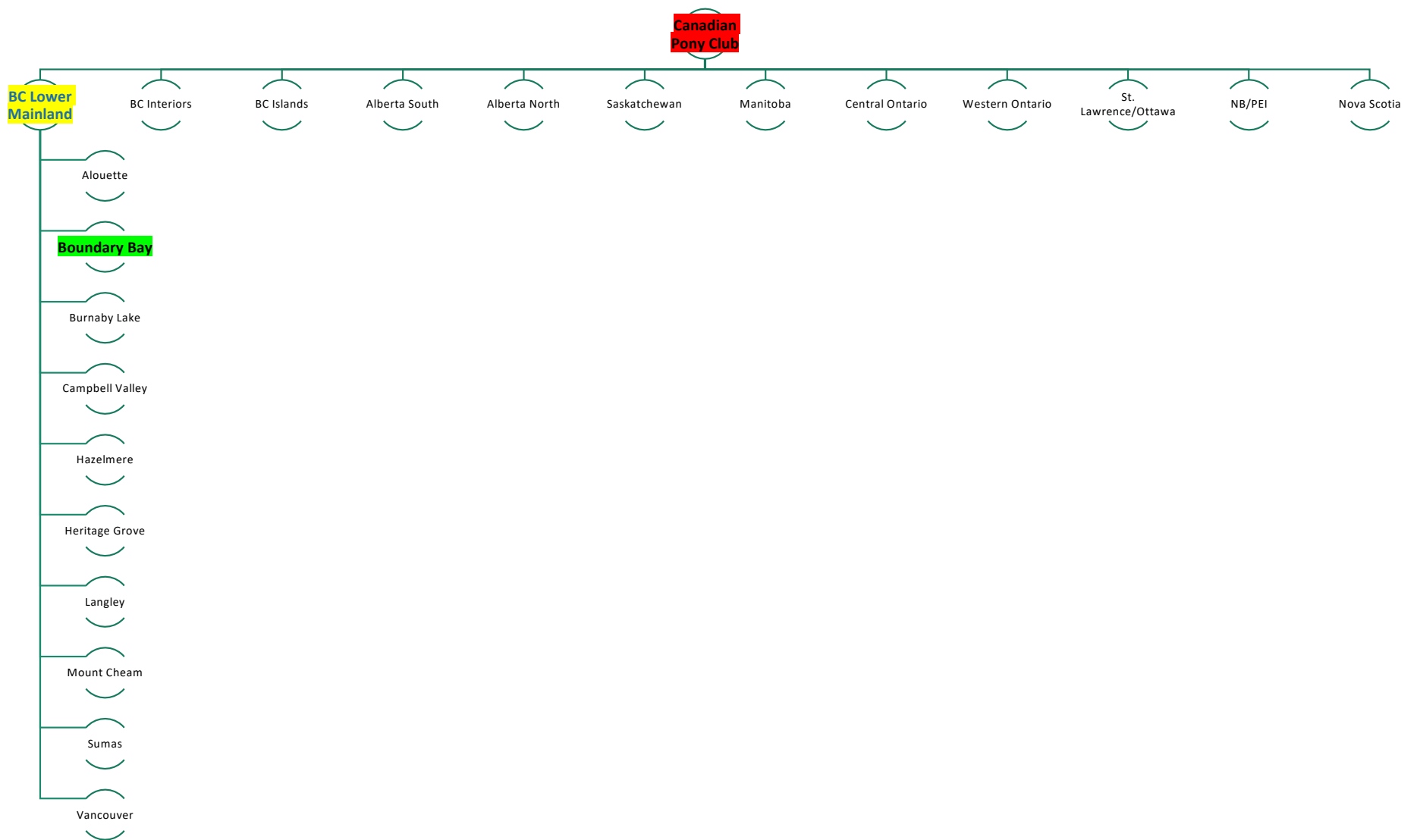


Volunteer Requirements

- It's important that all families help
- Expectation: minimum 20 volunteer hours per family (to be fulfilled over the course of the year)
- Roles may include: Executive roles, event organizing, setup/cleanup, Fundraising support, Coordinator roles for each discipline
- Admin & communication tasks
- Many hands make light work → everyone's effort matters no matter how small the task

Registration & Fees

- Registration is online this year. We are still getting the portal up and running, but expect that it will be up this week
- Annual fees:
 - Branch Fee: \$150,
 - BCLM Regional Fee: \$65,
 - Canadian Pony Club National Fee: \$110
 - You are required to have a membership to Panorama Ridge Riding Club. If you are a non-riding pony clubber it is \$25. For riding pony clubbers its \$50.
- Extras for optional activities (Rally, PPG, etc.)
- Club subsidizes many events (including testing) & clinics
- New members receive a club shirt!



Stable Management

- 7-10 Sunday morning sessions (Fall/Winter)
- Levels grouped: D/D1, D2, C/C1
- Prepares members for written & riding tests in spring
- Focus on safety, tack & horse care, feeding, stable routines, hands-on practice



Testing & Pathways

- Written testing: April
- Riding testing: June
- Levels: D → D1 → D2 → C → C1 and beyond
- Progression opens doors to: National testing, International exchanges, Leadership & coaching
- Pony Club is a long-term pathway, not just a single year!



Quiz

- Unmounted event
- Practices begin January
- Regional Quiz: end of February
- Fun competition in teams → horse knowledge + trivia
- No horse required → great for ALL members
- Builds teamwork, memory skills, and confidence



Tetrathlon

- Multi-discipline competition: **running, swimming, shooting, and riding**
- Focus on fitness, versatility, and horsemanship
- Great for developing all-around athletic ability
- Regional competitions held annually → opportunities to advance further
- Open to a wide range of ages and levels



Prince Philip Games (PPG)

- Starts after spring break → runs until June
- Relay-style mounted games, fast & fun
- Focus on teamwork, balance, agility, and horsemanship
- Club helps find horses for riders when possible
- Regional Games Days → National opportunities



Rally

- Held in July → camp-style competition
- Teams live onsite, care for horses, and compete in riding & stable management
- Emphasis on teamwork, independence, responsibility
- Requires horse/lease to participate
- One of the most memorable Pony Club experiences!



Dressage & Show Jumping

- Championships each September/October
- Riders can qualify at Regional level, with National opportunities
- Dressage = foundation for all riding (precision, balance, harmony)
- Show Jumping = develops rhythm, control, and courage
- Great goal event to cap off the year





Wrap-Up & Questions

- Recap: Register online & pay branch/regional/national fees
- Volunteer hours are required
- Activities: Stable Management, Quiz, PPG, Rally, Dressage/Show Jumping
- Stay connected: club emails, website, Teamsnap
- Visit www.boundarybayponyclub.com for more details.
- Thank you for considering Boundary Bay Pony Club!

A photograph of a rider on a pony in an outdoor arena. The rider is wearing a green shirt, a grey helmet, and sunglasses, and is leaning forward. The pony is dark-colored with a light brown mane and tail. The arena has a dark wooden fence in the background and several white markers on the ground. The text "Any questions, please reach out!" is overlaid in white, and the email address "boundarybayponyclub@gmail.com" is overlaid in green below it.

Any questions, please reach out!
boundarybayponyclub@gmail.com