



P.G.AUTOMATION
FOR PERFECT SOLUTIONS

www.pgautomation.in



ABOUT US

A P.G.Automation is to be the industry's premier service provider company focused deliver the maximum to our clients. A tech Solution's objective is to establish itself firmly as a leader in the global automation market by manufacturing and catering the finest quality solution to consumers across the world by using Siemens PLC, HMI, Drives, Scada System, Field Instruments, Installation & Commissioning Instruments. To achieve above objective, our leadership team will put all required Efforts & consequently emerge as a global leader in the field of automation.



We integrate delivery of our supply's services in such a way that clients project execution flow is delivered seamlessly.

Intense customer focus has always been at the core of our mission, as we strive to consistently deliver the most advanced and innovative solutions to our customers in global automation industry.

The leadership team of P.G.Automation represents our unwavering commitment to excellence.

We serve our services to different industries like Pharma Industry, Textile Industries, Metal Industry, Road Construction Industry, Packaging Industries, Plastic Industries, Glass Industry, Extrusion Industry, Machine Tool Industry, Food & Beverages Industries etc.

SIEMENS PLC



It provides unique and powerful programming tools with multiple benefits including: creation of re-useable logic, a structured program architecture, and single project integration of multiple automation devices. Siemens Step 7 is a powerful integrated software solution for automation, and includes the programming environment for Siemens programmable logic controllers (PLCs).

FEATURES:

- Used for small, medium & Large-scale industry
- Available in redundancy & Fail-safe version
- Compact and space saving design
- Extended communication option
- Safety integrated & Flexibility

DEALS IN:

- Siemens S7-1200 CPU & Expansion Modules
- Siemens S7-200 Smart CPU & Expansion Modules
- Siemens S7-300 CPU & Expansion Modules
- Siemens S7-400 CPU & Expansion Modules
- Siemens S7-1500 CPU & Expansion Modules
- Siemens ET200SP CPU & Expansion Modules
- Siemens ET200S CPU & Expansion Modules
- Siemens ET200M CPU & Expansion Modules
- Siemens Logo PLC

SIEMENS AC DRIVE



We have a simple and cost-effective drive solution with its compact SINAMICS drive Basic Performance converter. Siemens electromechanical drive systems help you increase uptime and minimize Total Cost of Ownership (TCO). They cover a wide performance range and can be supplied in different sizes. Depending on the field of application, you can select from a variety of different Sinamics drive options to suit your exact requirements. When supported by Siemens digitalization technology, your productivity is enhanced and repair time is reduced by quick and easy access to Siemens off-site technical resources.

FEATURES:

- Simple & Cost effective
- Compact with high power density
- Three voltage variants for connection to 200 V, 400 V & 690 V power supply
- High level standard and safety concept
- Use in small, medium & High range application
- Available in different communication (Profinet, Modbus, USS, & Profibus)

DEALS IN:

- Siemens V20 Drive
- Siemens G120C Drive
(Power ratings from 0.55 up to 132kW)
- Siemens G120 Standard Drives
 - Siemens Power Module (PM240-2 Series)
(Power ratings from 0.55kW up to 250kW)
 - Siemens Control Unit
 - Siemens Basic Operator Panel
- Siemens S120 Drive
- Siemens G120X & G120XA Series Drive
- Siemens G130 Series Drive
- Siemens G110D & G120D Series Drive
- Siemens IOP



Great HMI design will make both you and your users happy, that's why we recommend SIEMENS HMI. several parameters can be created in a single step when engineering in the TIA Portal and blocks can be saved in libraries. It saved a lot of time in development and became even more flexible in terms of engineering.

SIMATIC HMI Panels have proven their value in many different applications in all industrial sectors over many years. If you are looking for a panel-based solution for more demanding applications with larger quantity scales, make a decision for Advanced HMI.

FEATURES:

- SAFE & SECURE
- High-resolution, dimmable wide screen displays from 4" to 22" with 64,000 colors (also configurable for portrait format)
- USB connection for project transfer, data archiving, keyboard, mouse, etc.
- PROFIBUS or PROFINET versions for process communication"
- Buttons with LED backlighting

DEALS IN:

- Siemens Simatic Key Panels
- Siemens Simatic Basic 2nd Generation Panel
- Siemens Simatic Basic 1st Generation Panel
- Siemens Simatic Unified Comfort Panel
- Siemens Comfort Panels 1st Generation
- Siemens Storage Card, Cables & Accessories

SIEMENS INDUSTRIAL PC - PANEL PC



Do you need to process and edit a large volume of production, related information? Then you can take advantage of wide range of this products for your projects. With its perfectly coordinated software tools, packages, and system components, you maintain constant control over the process, can promptly detect potential failures, and effectively minimize plant downtimes.

SIMATIC IPCs are designed to operate reliably around the clock, 365 days in a year. All SIMATIC Panel PCs are impressive with their ruggedness, performance, and brilliant display.

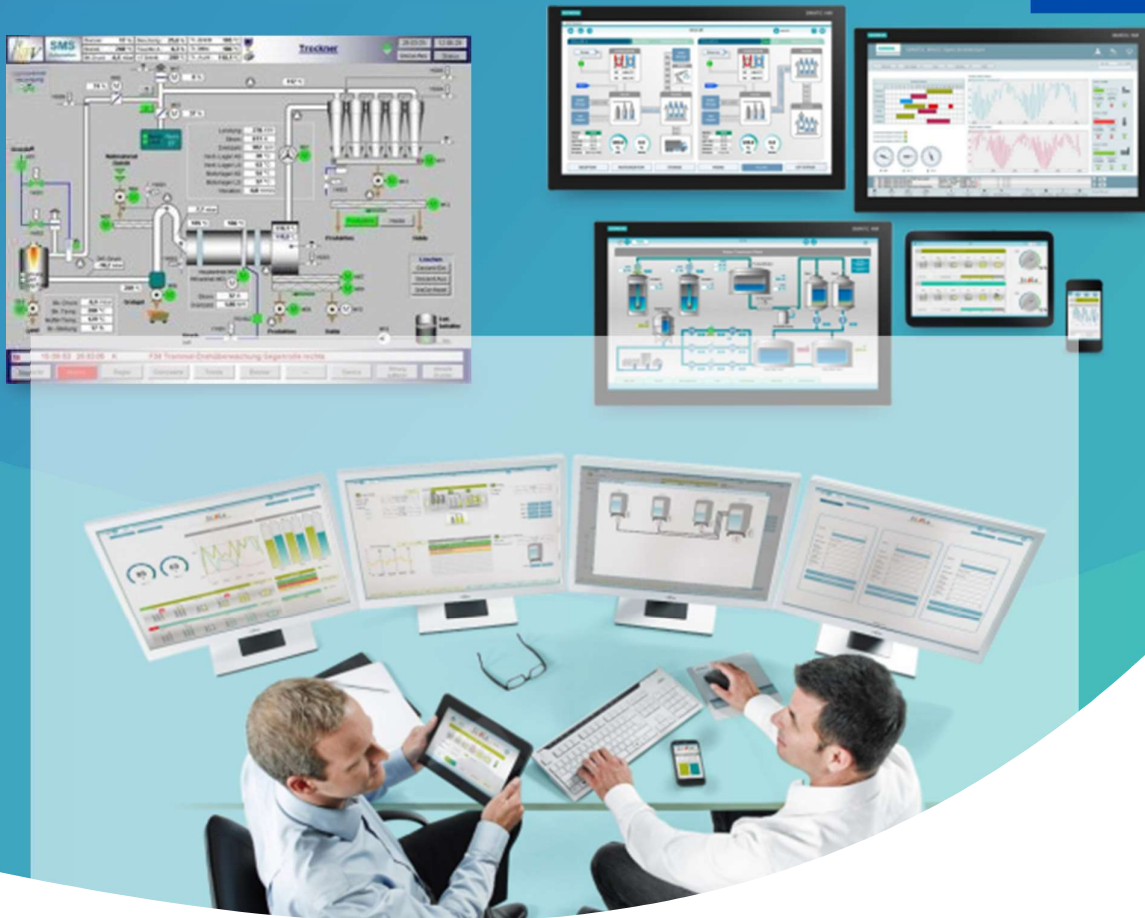
FEATURES:

- Customized solution
- Fast, intuitive operator panels with glass fronts
- Industrial Flat Panels, Thin Clients, and Tablet PCs
- Simple network integration
- High investment protection
- Sharp, high-contrast image display with uniform brightness for better legibility
- Backlit LED display, dimmable from 0% to 100
- Multitouch operation with intelligent fault detection
- Extraordinary software support: individual programming, SIMATIC TIA Portal from V13, SIMATIC WinCC from V7.2, SIMATIC WinCC OA

DEALS IN:

- Simatic IPC 427 Series (Box PC)
- Simatic IPC 627 Series (Box PC)
- Simatic Industrial Flat Panel(IFP)
- Simatic IPC 277G Box PC

SIEMENS SIMATIC SCADA & SOFTWARE



The SIMATIC WinCC V7 SCADA software is an innovative, scalable process visualization system with numerous high-performance functions for monitoring automated processes in all industries. SIMATIC SCADA systems combine efficient engineering with high-performance archiving and maximum data security. You can easily implement your individual and special requirements to the support of international standards and system-internal script and programming interfaces.

SIMATIC WinCC V7 supports you with efficient and modern engineering tools to achieve a short time-to-market for new plants and minimal downtimes in the case of plant conversions.

FEATURES:

- High-performance data archiving
- Efficient analysis of process values and trends with WinCC Tag Logging and efficient controls
- with the freely configurable, multilingual WinCC message display
- Cross-manufacturer communication via OPC (OLE for Process Control)

DEALS IN:

- TIA Portal WinCC Runtime Advance
- TIA Portal WinCC Runtime Professional
- TIA Portal Recipes + Logging
- TIA Portal Step 7 Basic
- TIA Portal Step 7 Professional

SIEMENS V90 SERIES SERVO SYSTEM



The servo drive system consists of the SINAMICS V90 servo converter and the SIMOTICS S-1FL6 servomotor. The system has eight framesizes and seven engine shaft heights to cover a power range of 0.05 to 7.0 kW for operation in single-phase and three-phase networks. It can be easily integrated via PTI, PROFINET, USS or Modbus RTU.

The SINAMICS V90 servo drive system allows a series of simple motion control tasks to be implemented cost-effectively and conveniently, with a focus on dynamic motion and processing.

FEATURES:

- Available in single phase & three phase
- Suitable for simple and highly dynamic application
- One-button tuning and real-time auto-tuning
- Sufficient encoder resolution and high data transfer rates
- Integrated easily via PTI, PROFINET, USS or Modbus RTU Oil seal at shaft end as standard
- SIMOTICS S-1FL6 servomotors have degree of protection IP65 as standard
- 300 % overload capability of drive and moto

DEALS IN:

- Siemens V90 Series Profinet Type Servo Drive, Single Phase
- Siemens V90 Series Profinet Type Servo Drive, Three Phase
- Siemens V90 Series PTO Type Servo Drive, Single Phase
- Siemens V90 Series PTO Type Servo Drive, Three Phase
- Siemens V90 Series Motor with Brake and Without Brake, Single Phase, with Incremental & Absolute Encoder
- Siemens V90 Series Motor With Brake and Without Brake, Three Phase, with Incremental & Absolute Encoder
- Encoder-Power Cable & Communication Connector & Cable
- Profinet Cable with Connector

SIEMENS HIGH PERFORMANCE MOTION CONTROL DRIVE & MOTOR



SINAMICS S120 drives include high-performance single drives and coordinated drives (multiple-axis applications) with vector or servo functionalities that allow implementation of customized high performance drive solutions for the ultimate in flexibility and increased productivity.

In addition to an innovative system architecture and digital communication options, these drives come in a variety of designs and cooling types, delivering high performance and featuring efficient engineering and quick commissioning.

FEATURES:

- High degree of flexibility and combinability
- Available in low-voltage and medium-voltage versions
- Single-axis and multi-axis drives
- Integrated motion control functions in the drive system (SIMOTION D)
- Simple wiring using DRIVE-CLiQ
- All interfaces communicate using pre-configured cables
- Motor modules and line modules in Booksize Compact, Booksize and Chassis formats

DEALS IN:

- Siemens S120 Control Unit
- Siemens S120 CF Cards & Licence
- Siemens S120 Dcc Editors
- Siemens S120 Power Modules (Chassis Modules)
- Siemens S120 Basic Line Modules
- Siemens S120 Active Line Modules
- Siemens S120 Smart Line Modules
- Siemens S120 Single Motor Modules
- Siemens S120 Double Motor Modules
- Simotics 1FK2 Motor
- Simotics 1FK7 Motor
- Simotics 1PH8 Motor



LAPP ÖLFLEX® Power- and control cables

The world's first brand cable is available in the most varied of versions to match maximum requirements.

Key Features: Oil-resistant, flexible and available to match almost any requirement or environmental condition - also free of halogens

Fields of Application:

- Universal application.
- Special versions also available for the renewable energy sector.

UNITRONIC® Data communication systems

The ideal brand for fast, trend-setting and reliable data transfer

Key Features: UNITRONIC® are not only data lines, but also bus lines, which together with active sensor/ actuator modules or gateways provide a perfect system for automation.

Fields of Application:

Measurement, Control, Regulation, Bus or LAN Networks.

ETHERLINE® Data communication systems for ETHERNET-Technology

The brands for network solutions, safety systems and firewalls in the industrial networking sector.

Key Features: Integral system consisting of hardware (switches, routers, cables, plugs etc.), software, consulting, network design and support.

Fields of Application:

Factory automation.

HITRONIC® Optical transmission systems

The brand for split-second, faultfree, intercept-free data transport.

Key Features: The HITRONIC® product range includes fibre optic cables in the most varied of versions, along with suitable accessories such as splice boxes, wall distributors or couplings.

Fields of Application:

Office and industrial sector.

CONTROL PANEL



We provide end-to-end integration of control systems across different components of your manufacturing process chain. We focus on maximizing our customer's impact by providing high-quality, efficient and secure solutions and minimizing the time to value.

We understand the need of customer & deliver a quality service which meets their exact specification.

OUR SERVICES:

- PLC Based Control Panel
- Drive Based Control Panel
- PLC & DCS Programming
- Motion Control Programming & Configuration
- PCC, MCC, APFC & DC Synchronizing Panel
- Distributor IO Control Panel
- System Upgradation/Retrofitting
- SCADA Base Control Panel Etc.
- Networking & IIoT



P.G.AUTOMATION
FOR PERFECT SOLUTIONS



220, Soham Arcade, Nr. Baghban
Circle, Green City Road, Pal, Surat-
394510, Gujarat, India.



+91 9429466685



Info.pgautomation@gmail.com



www.pgautomation.in