



Working Collaboratively Towards Economic Mobility in Connecticut

Today's Agenda

1. Welcome
2. The Coalition Model & Value
3. Place-Based Systems in Action:
 - a. Early Childhood -> Kindergarten Readiness
 - b. Community Schools -> School Success
 - c. Youth Pathways -> Career Success
4. National Context: StriveTogether
5. Community Voice
6. Closing



CONNECTICUT CRADLE TO CAREER COALITION

Five CT communities collaborating on practice and policy changes to help every child thrive from cradle to career

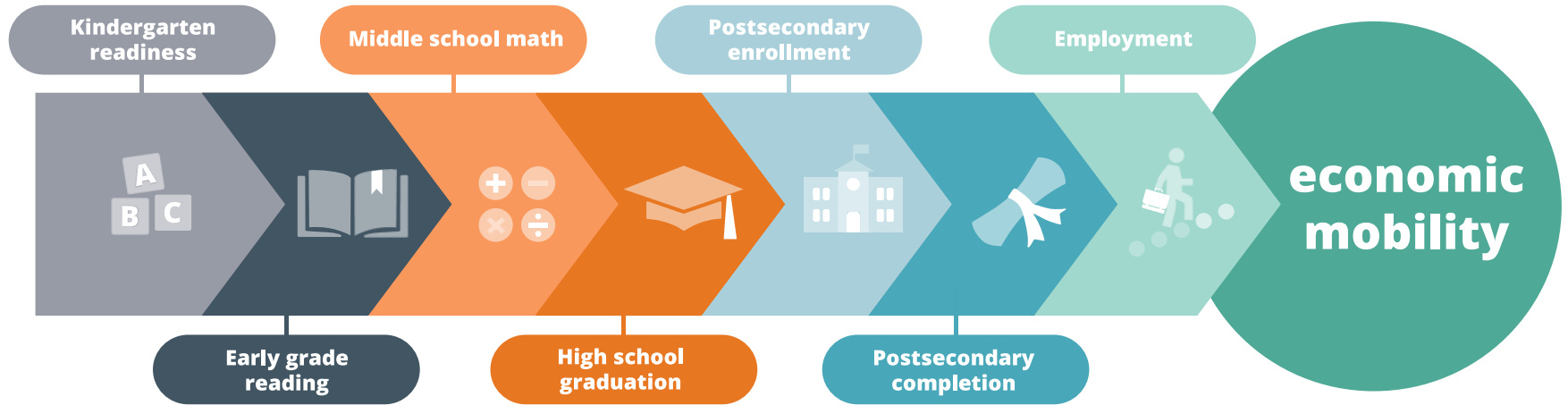


The Danbury Collective



CT Cradle to Career Coalition (CT C2C) is a **statewide policy collaborative** uniting five StriveTogether partnerships, 15 working groups, and over 440 partner organizations. Together, the coalition serves **125,000 children** across **Bridgeport, Danbury, Norwalk, Stamford, and Waterbury**—five of Connecticut’s largest cities where young people of color face disproportionate barriers to opportunity.

Seven Cradle-to-Career Outcomes

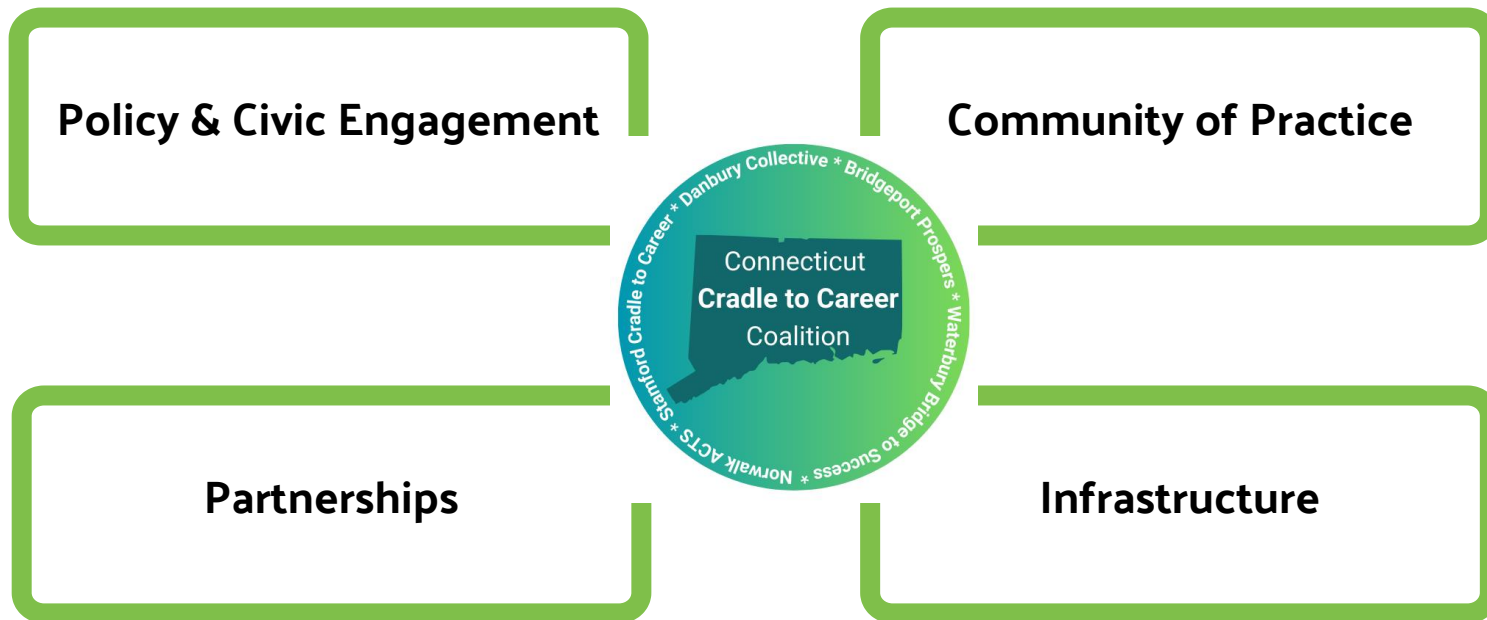


StriveTogether[®]

Every child. Cradle to career.

www.ctc2c.org | 4

CT Cradle to Career Coalition



Three Policy Priority Areas



Economic Equity

Enhance opportunities for generational success and wealth, bolster the social safety net, and promote skills-based hiring and training initiatives

Education Equity

Strengthen early education opportunities and resources while enhancing family and student-school connections through in and out-of-school support

Health Equity

Expand culturally responsive medical and behavioral healthcare, School-Based Health Centers, Community Health Workers, and Doula access

Five CT Partnerships



The Connecticut C2C Coalition consists of five place-based, cradle-to-career StriveTogether Network partnerships:

- [Bridgeport Prospers](#): Katerina Vlahos
- [Danbury Collective](#): Melissa Hannequin
- [Norwalk ACTS](#): AnaVivian Escalante
- [Stamford Cradle to Career](#): Edith Presley
- [Waterbury Bridge to Success](#): Althea Brooks

The United Way of Coastal and Western Connecticut serves as the backbone for Bridgeport Prospers, Danbury Collective, and Stamford Cradle to Career, and Norwalk ACTS and Waterbury Bridge to Success are independently managed.

State Coalition as a Local Value Add

Tribuna

NEWSPAPER • JORNAL • PERIÓDICO

MENU



Danbury Collective. A Multi-Stakeholder Collaboration to Help All Children And Families Have Opportunities to Succeed

[CONTACT](#) [WEB FEEDBACK](#) [ABOUT](#) [DONATE](#) [10.01.2024](#)



ESTAR PRESENTE
SER *Poderoso*

Ausentismo crónico
Pasos de acción para las familias

Presentado por el Colectivo Danbury

Actualizado a septiembre 2024



A group of around 20 members from the Danbury community, including parents, non-profit organizations, municipal leaders, and school officials, announced the launch of the Danbury Collective at a meeting last month.

By Tribuna Staff

ESTAR PRESENTE
SER *Poderoso*

¡BUSCA AYUDA!

¡Los seguidores te rodean!

- Director
- Trabajador social de la escuela
- Enfermera escolar
- Family Liaison
- Psicólogo escolar
- Grupos de padres
- Centros de salud en las escuelas
- Maestro
- Entrenador
- Comunidad de fe
- Consejero Vocacional
- Amigos y familiares
- Médico
- Grupos de juego

¡EXPRESA TU OPINIÓN!

Utilice el código QR para encontrar a su funcionario legislativo electo. Expresa su opinión sobre las políticas de ausentismo crónico y lo que necesita para garantizar el éxito de usted o de su hijo.



¡Dígale a Danbury Collective lo que piensa sobre el ausentismo crónico!



Esta escala representa la progresión de un estudiante que se vuelve presente y poderoso al revertir su ausentismo crónico. El objetivo es que los estudiantes rara vez falten, asegurando su éxito presente y futuro.



Early Childhood -> Kindergarten Readiness

Why It Matters

- High-quality early childhood care, education and early development monitoring and interventions builds the foundation for later learning and life success, with early math, reading, and attention skills predicting future achievement
- The brain doubles during the first year of life, becoming 70% of its adult size by the third birthday and 90% by the fifth birthday.

Institutional Concerns

- Equity data is essential to identify and eliminate systemic disparities in maternal health and infant developmental outcomes.
- Black women are more than three times as likely to experience a pregnancy-related death.



Early Childhood -> Kindergarten Readiness

How we are showing up for our communities:

- Improving maternal health through direct policy changes and training physicians.
- Increase access to equitable prenatal care by advocating for additional care options, such as doula services.
- Tracking early child care educational experiences and preschool utilization
- Monitoring child development through assessment measures and expanding our knowledge of intervention impact via data.



Community Schools -> School Success

BOOST! COMMUNITY SCHOOLS

Free Programming for Families & Kids in FIVE Waterbury Public Schools and counting . . .



Expanded & Enriched Learning Time



Before school, during school, after school, weekend and summer programming for youth & families

Integrated Student Support



Mental/physical health supports and social services such as therapy and mindfulness (yoga)

Collaboration for Improvement



We foster a culture of learning, trust, and improvement to provide a personalized approach for students and families.

Active Family & Community Engagement



Viewing parents/caregivers, youth and other community members as partners, leaders and learners

"I liked that you can program games and play them, edit levels, make them harder, and change sizes and colors"

- Student Participant, BOOST! Community School, Brass City Gamers Program

Our Current Programs Include



HEALTH & NUTRITION



YOGA



CHESS



CODING & GAMING



MEDIATION

What Is A Community School?

Every child deserves a safe home, help to learn, and encouragement to lead. BOOST! Community Schools are public schools that bring together the school and community to support our students. At BOOST!, teachers, families, and community partners work as a team to give every child a great education and a happy learning experience.

Where we are:

- Carrington Elementary School
- Duggan Elementary School
- Gilmartin Elementary School
- Reed Elementary School
- Wendall Cross Elementary School

BOOST! Community School Facts

Waterbury Bridge to Success, in 2016, responded to the community's call to empower our schools with programs designed by, involving, and benefiting community members. These schools, serving approximately 6,000 students, aim to support youth and their families.

Stay-Connected

Are you a student or parent at one of our BOOST! community schools? Are you a community organization or individual looking to partner for programming?

Visit Us

www.waterburybridgetosuccess.com/boost or email boost@waterburybs.org for more details.

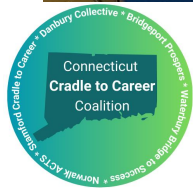
Text **BTSFAMILY** to **474747** to stay up to date



Youth Civic & Workforce Pathways -> Career

Success

Strengthening youth voice, expanding career-connected learning, and building clear workforce pathways is essential to reconnect youth and drive long-term economic mobility.



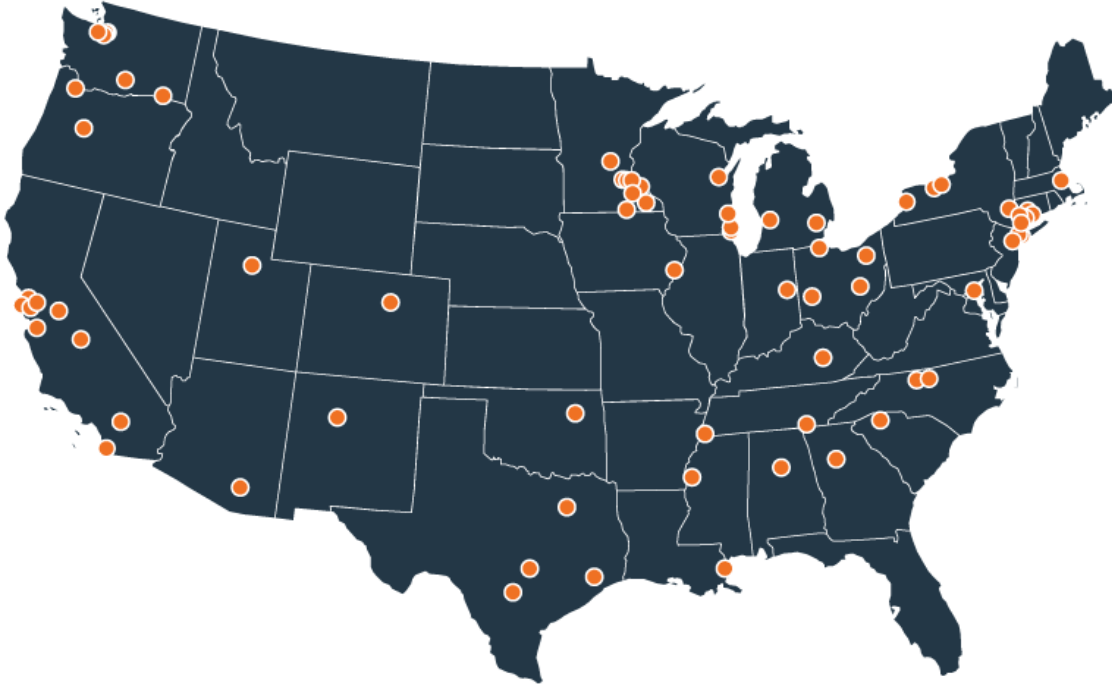
StriveTogether[®]

Jennifer Saenz, Director State Policy

The StriveTogether Cradle to Career Network

- **Local leaders developing the strategy**, connections and resources needed to build a world where every child has every opportunity to succeed.
- **Partners across sectors** — schools, housing, health care, nonprofits, businesses and more — all committed to the success of young people.
- **Communities using data to get better results** measurable goals to track progress and improve strategies.
- **A network turning local successes into nationwide impact**, sharing insights and experiences across communities.
- **A movement aligning toward a shared goal** to maximize resources, amplify impact and invest in sustainable solutions.

Cradle to Career Network



Our impact:

14

million children
reached

70+

Cradle to Career
partnerships

12

statewide policy
coalitions

OVER
\$13B

in public funding
unlocked

\$100M

regranted to
local partnerships

StriveTogether 2030 Strategic Goals

4 MILLION more young people on a path to economic mobility



70%

network members
improving
4 or more outcomes.



\$70B

in public funding
unlocked for better outcomes
and civic infrastructure



75,000

training units
completed by place-
based leaders

About us: What we do

StriveTogether is a national network of community organizations that join together neighbors, including youth and families, nonprofits, businesses, schools and more, to work toward a future where youth can thrive in their shared communities.

Cradle to Career Network members change the way their communities work together by building connections, sharing resources and using data to get better, more equitable outcomes for young people.

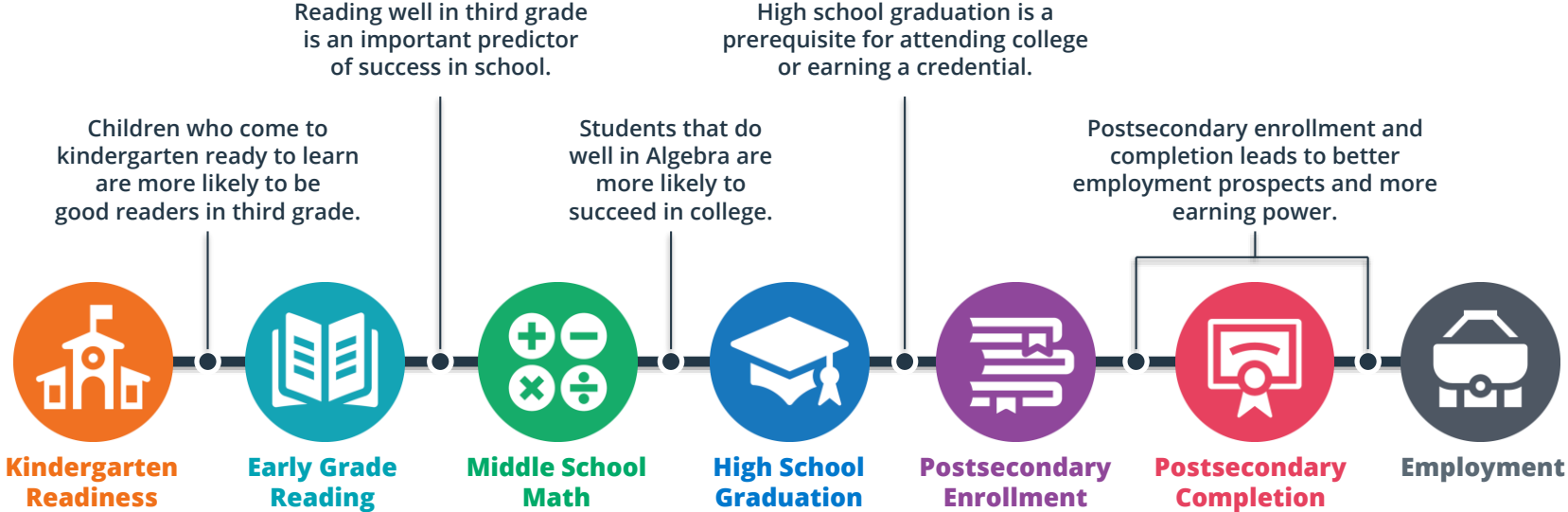
Our work helps young people meet seven key life milestones so that they have the opportunities they need to reach their goals, and, ultimately, thrive.

Our commitment

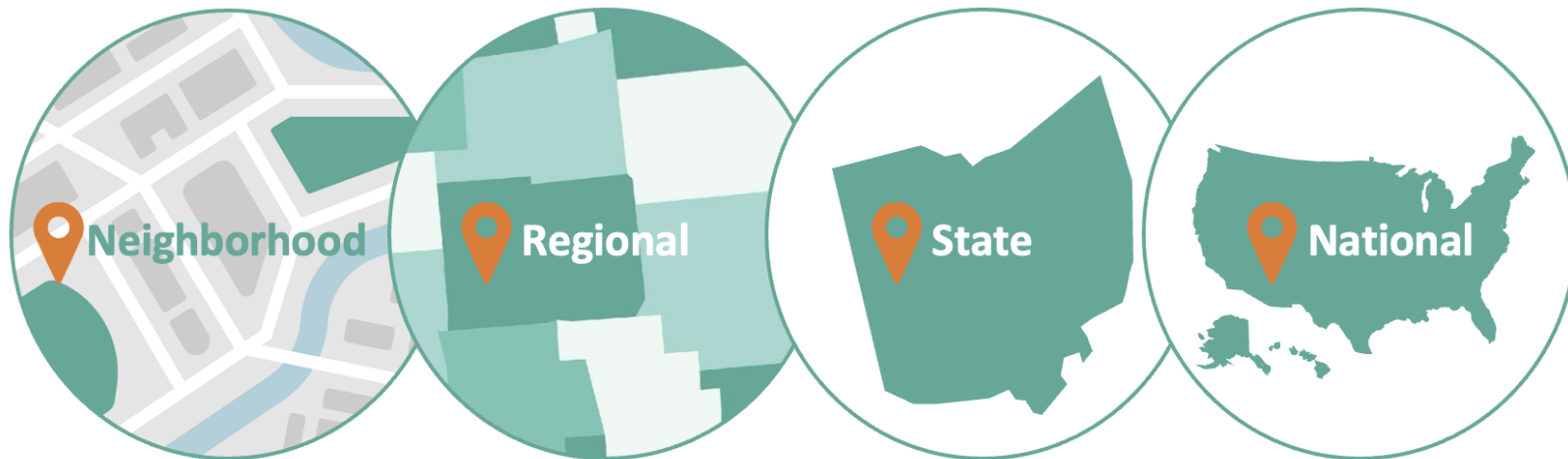
When we are willing to put the needs of children above the preservation of institutions it positively impacts mobility for youth and families.



Cradle to Career Outcomes



Historical Approach



Statewide Impact

Maryland – ENOUGH Act

- \$20M initial state investment for first year of place-based grants
- Community-led cross-sector plans to reduce child poverty

New York – Universal Childcare Expansion

- State–city partnership to launch free childcare for 2-year-olds (NYC “2-Care”)
- Reduces cost burden and expands access statewide, \$20M pilot counties

Ohio – SB 208 Regional Partnerships (~\$2M seed funding)

- Establishes regional place-based education & workforce partnerships statewide
- Aligns early childhood through post-secondary, workforce, and community supports

Statewide Impact

Minnesota – Regional Neighborhood Partnership Grants

- \$8M Cradle to Career work to ensure economic mobility

California – Community Schools / Cradle-to-Career Investments

- \$4.1B state investment in community school implementation grants (Proposition 98)
- Integrated supports for students & families
- Aligns education, health, and community services

StriveTogether[®]

Every child. Cradle to career.



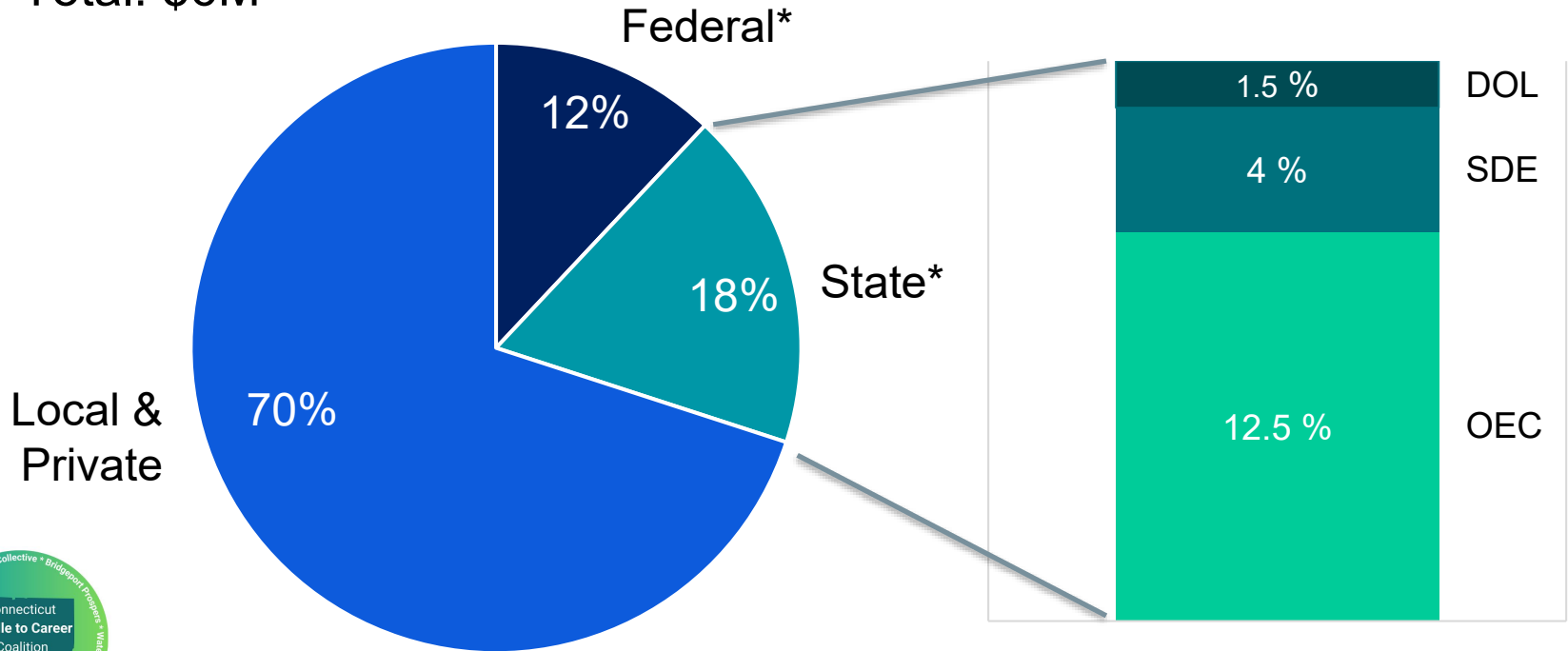
Visit us at StriveTogether.org | Listen at TogetherforChange

Community Voice: The Experts



CT Cradle to Career Funding

Total: \$6M



*considers state contingency funds to restore community schools grant

Our Ask

Strong Commitment from the State of CT for Cradle to Career efforts

- Partnership in design and implementation
- Alignment of existing state policy and resources
- Increased funding for both local and statewide cradle to career efforts



Thank you!



The Danbury Collective

