



Attention



EDUCATION SUPPORT PROFESSIONALS

(ESPs = Paraprofessionals, Office/Custodial/Kitchen staff, Aides, etc.)

Did you know...

- As an Education Support Professional (ESPs), you can become a member of the De Soto Teachers' Association (DTA), the Kansas National Educators Association (KNEA), and the National Educators Association (NEA). Simply use the QR code below to join!
- ESP dues rates are reduced as a reflection of pay scales.
- Earn back the cost membership by utilizing the free member benefits.
- Although ESPs aren't able to collectively bargain their contract yet, there are numerous benefits offered that make membership a critical support of the work you do for students.

Benefits:

- Membership benefits
 - Attorney Referral Program
 - Deals on home & auto insurance
 - Discounts on hotels, restaurants, & rental cars
- Legal services
- Support from DTA & KNEA staff
- Opportunities to be involved in KNEA governance, conferences, & training
- NEA online learning at discounted rates

Join us now!

UniServ District: Ad Astra



Contact Info:

Dandra Arter, President

Emily Valdez, Vice-president

Jeff Wieland, Vice-president

Renee Cahoy, ESP Member At-large

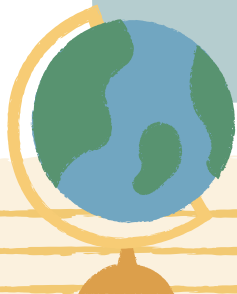
Any DTA Building Representative

Website:

The De Soto Teachers' Association
www.desototeachers.org

The Kansas National Education Association
www.knea.org

The National Education Association
www.nea.org



Membership Enrollment Link: www.knea.org/join

January Dues Total: \$185.01 (~\$23.13/month)

Payment Method: EFT = Monthly bank account deduction