

METAPHYSICALLY

12 Faculties
OF
Divine Mind

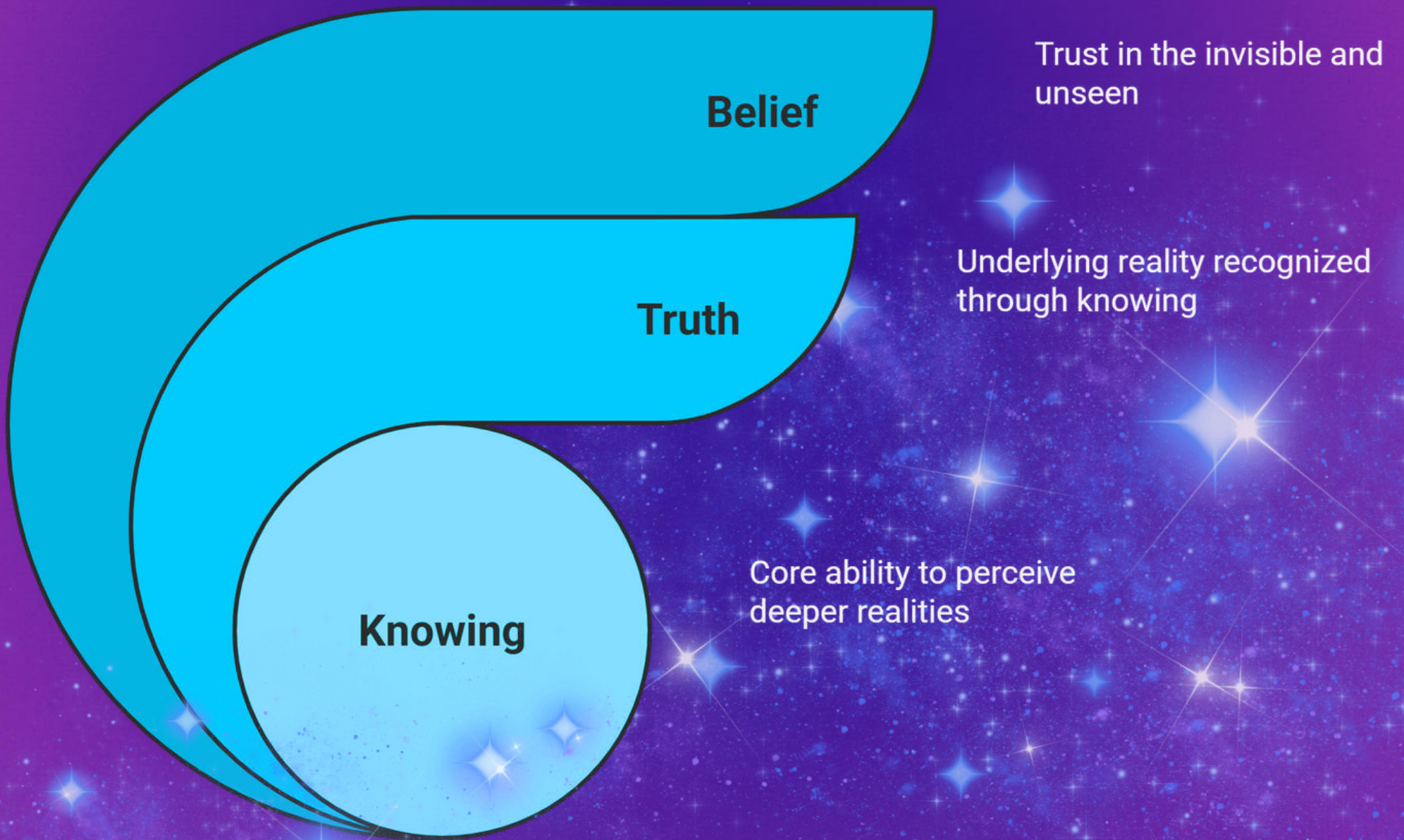


TSALAGIYITURTLEISLAND.ORG



I KNOWING

Knowing - Seeing Beyond Appearances

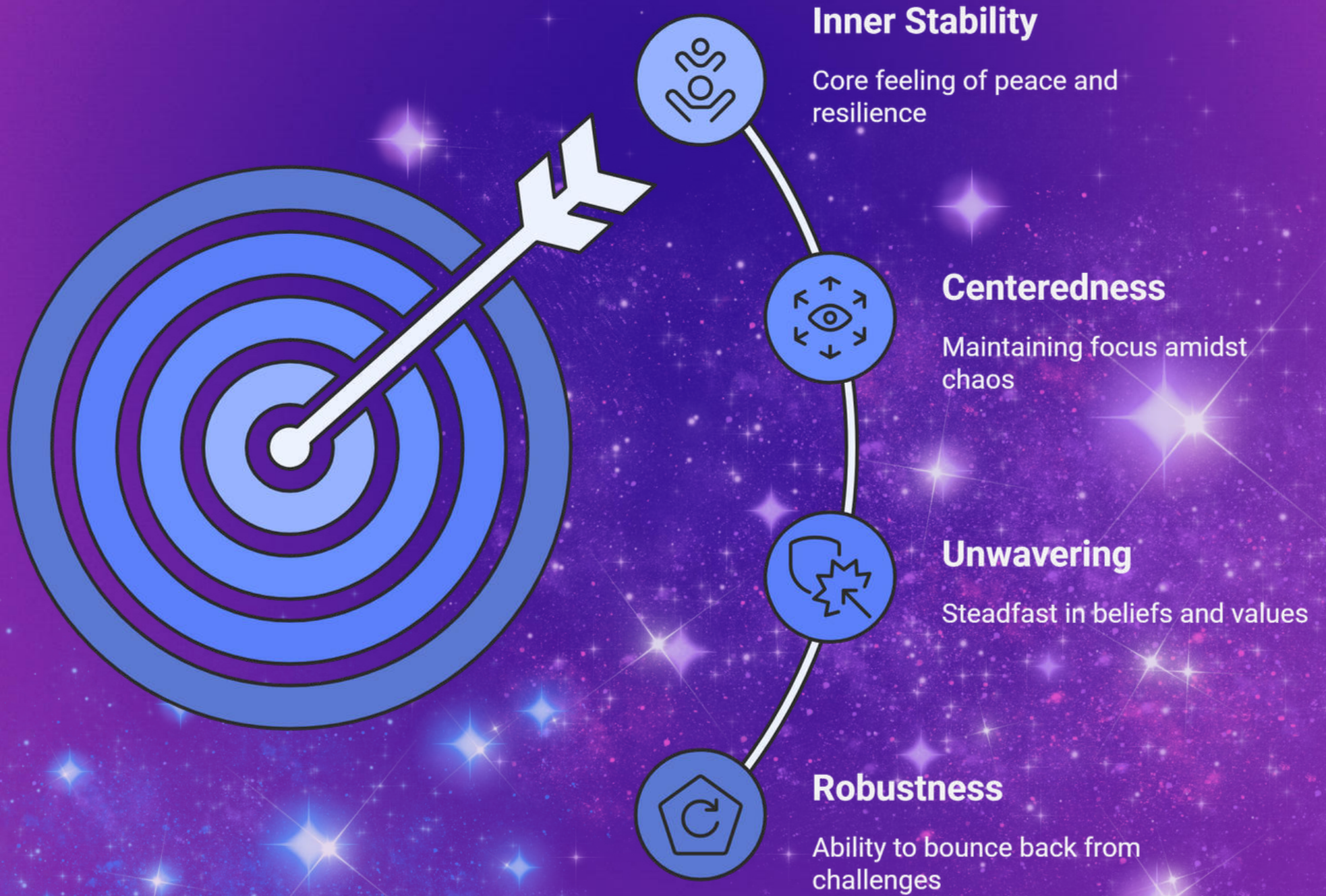




II

STRENGTH

Strength as Inner Stability

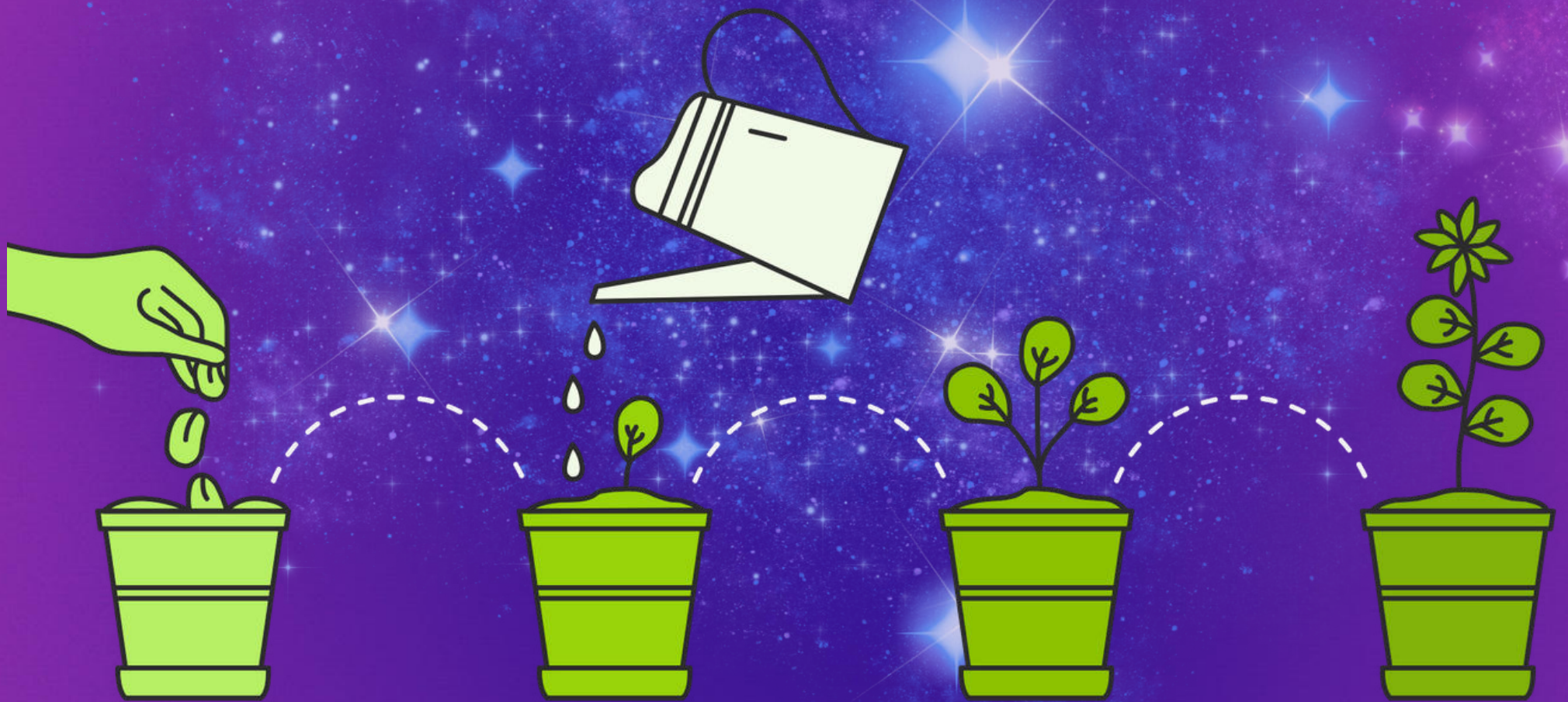




III

WISDOM

Developing Wisdom



Unclear Discernment

Making choices based on appearances

Recognizing Truth

Identifying what resonates with truth

Sound Choices

Making decisions aligned with truth

Clear Discernment

Making sound choices and recognizing truth



IV LOVE

The Foundation of Divine Mind

Love

The force that binds, mends, and brings together.



Strength

The power to stay grounded, steady, and resilient.



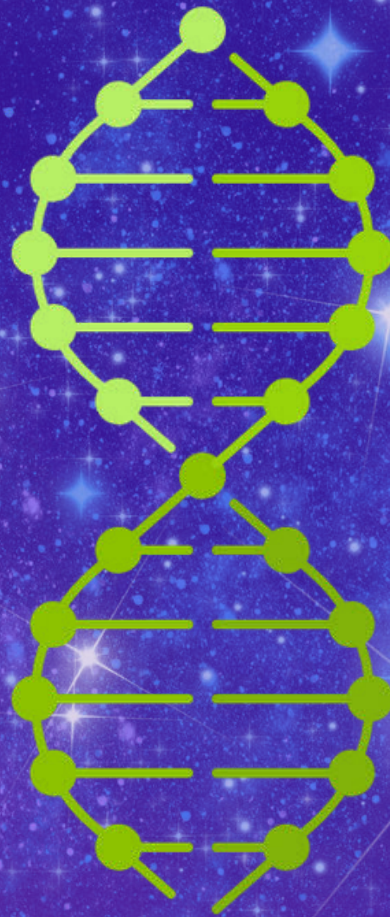
Wisdom

The power to choose rightly and see what aligns with truth.



Knowing

The power to trust the unseen and know truth intuitively.

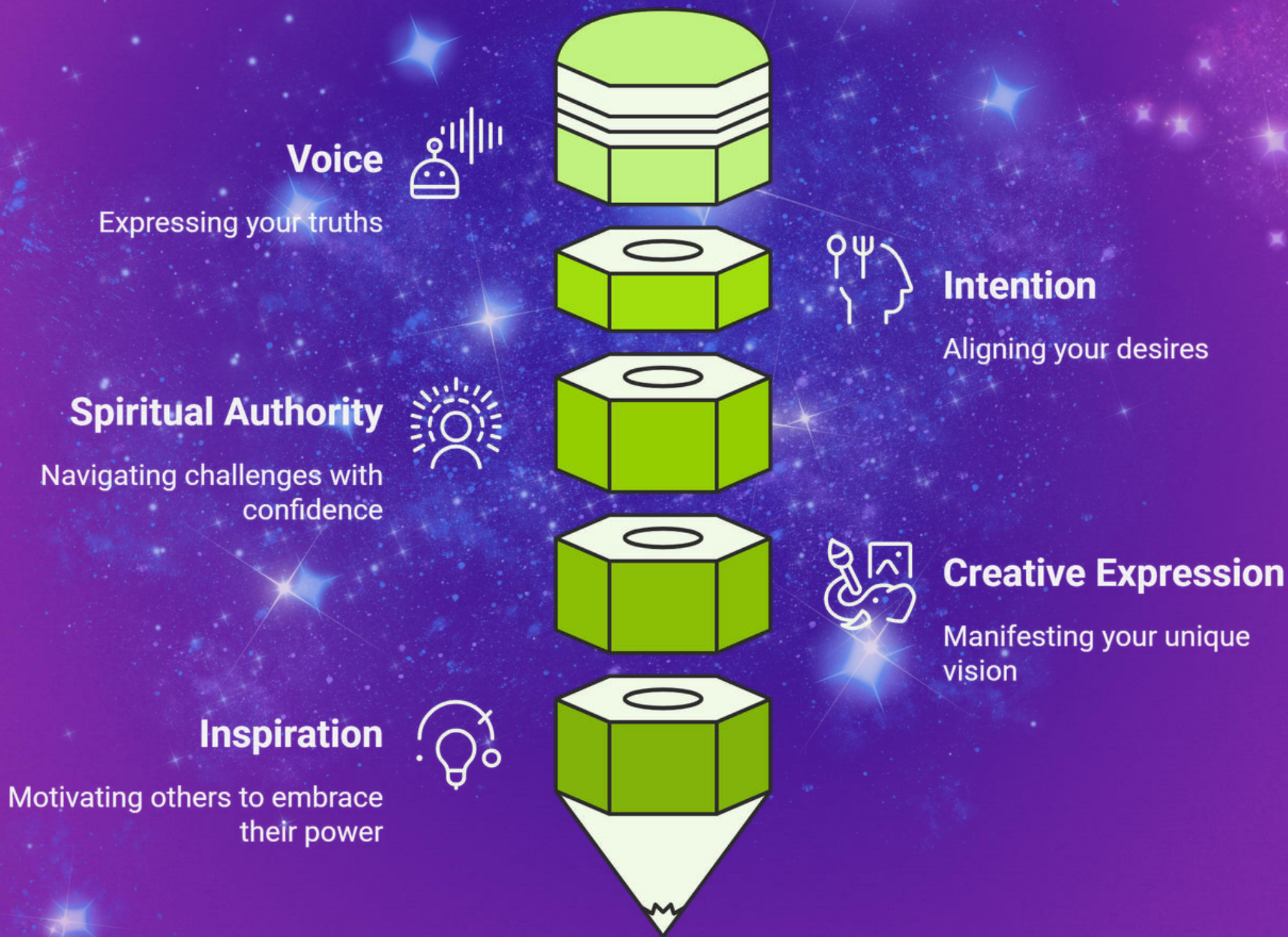




V

POWER

Harnessing Your Inner Power





VI

IMAGINATION

Imagination: Transforming Ideas into Realities

Abstract Ideas

Unformed, intangible concepts

Harness Inner Vision

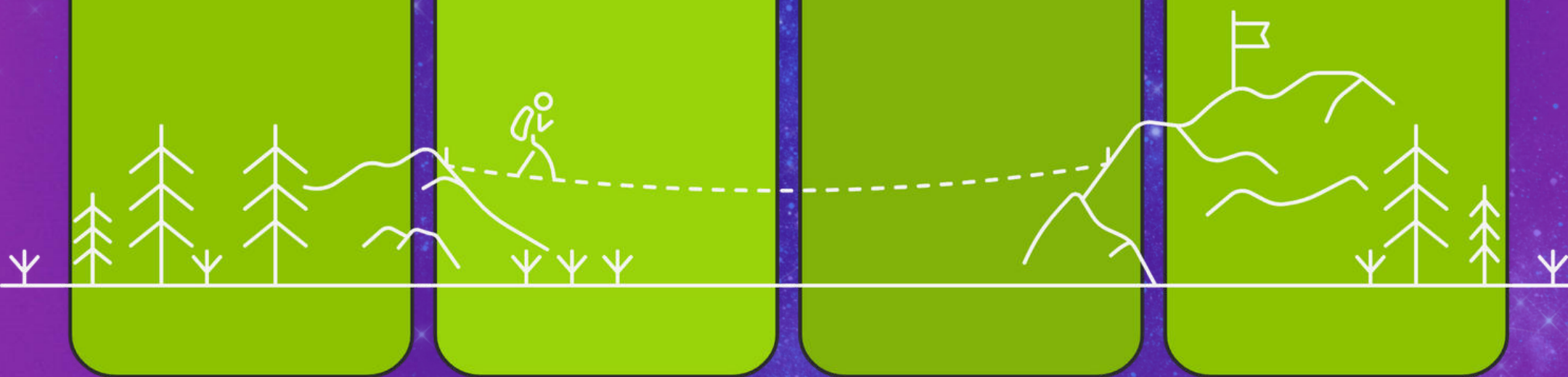
Envision possibilities and create

Transform Ideas

Make abstract concepts tangible

Tangible Concepts

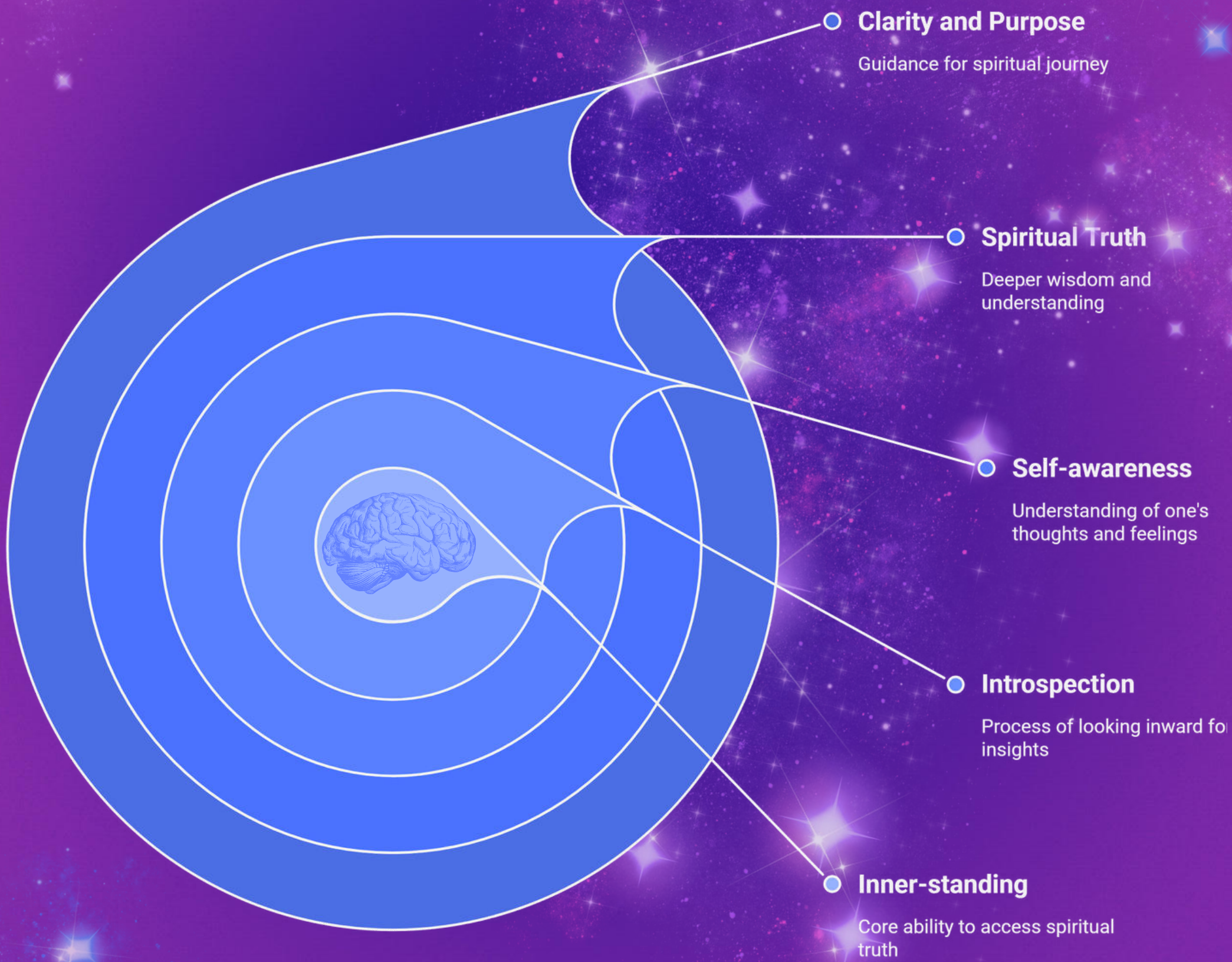
Innovative, inspiring realities





VII

INNERSTANDING





VIII WILL

Aligning Individual Will with Divine Purpose

Harmonious Action

Acting in accordance with divine will



Conscious Choice

Making deliberate decisions aligned with divine purpose



Aligning Will

Spiritual Authority

Exercising divine power with integrity



Inner Peace

Experiencing tranquility through divine alignment





IX ORDER

Divine Timing Cycle

Manifest Intentions

Achieve goals through timely actions



Embrace Divine Timing

Align with natural flow of events



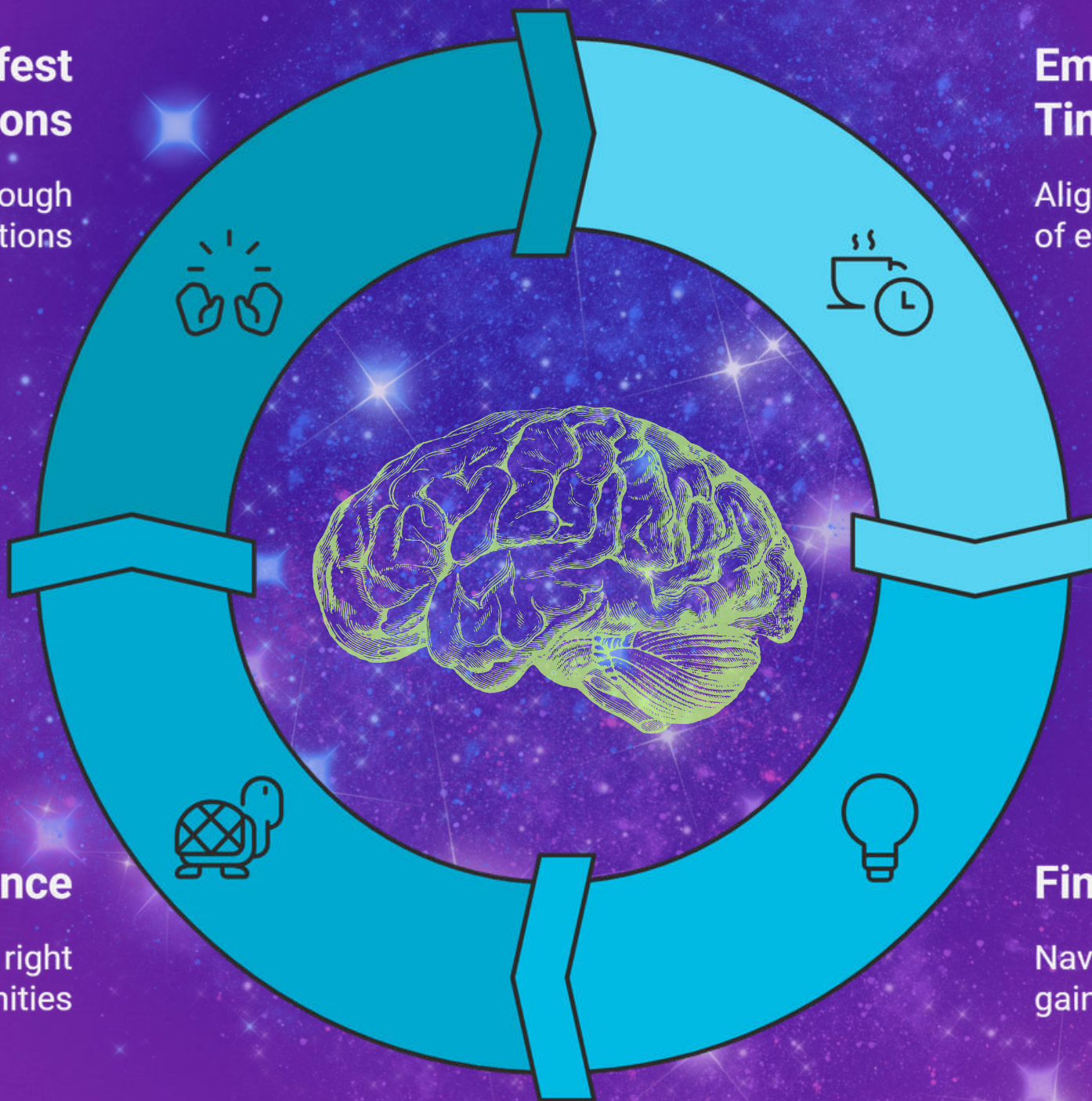
Foster Patience

Wait for the right opportunities



Find Clarity

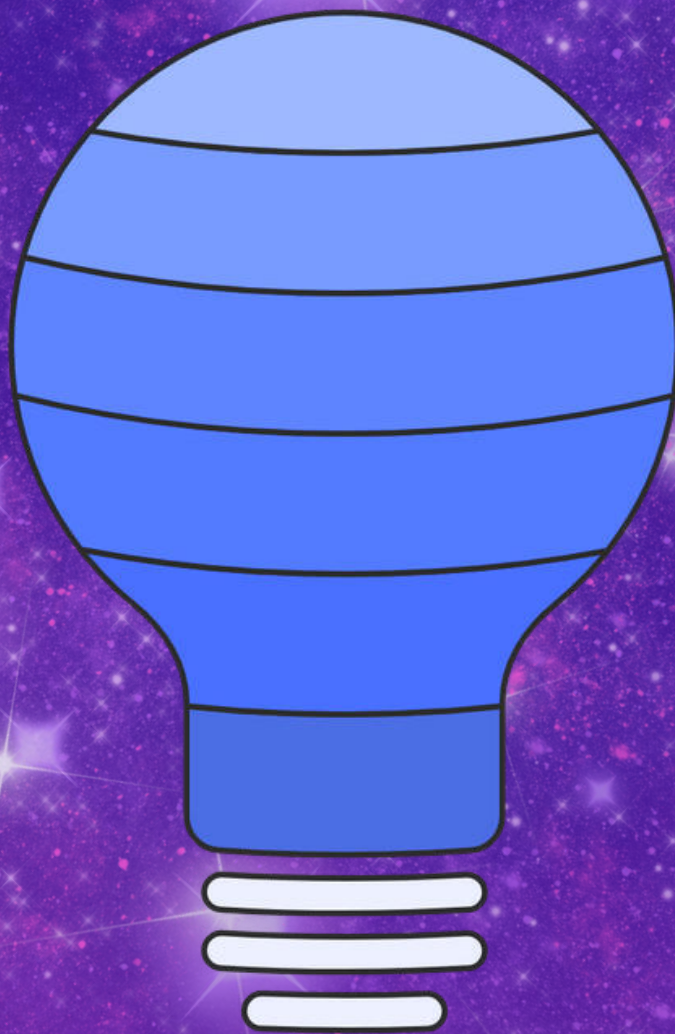
Navigate chaos and gain understanding





X ZEAL

The Power of Zeal



Energy



Fuels motivation and drive

Inspiration



Encourages others to join

Determination



Overcomes obstacles and challenges



Motivation

Inspires action and commitment



Creativity

Enhances innovative thinking



Personal Growth

Promotes self-improvement and development



XI

RELEASE

Release: Achieving Personal Growth

Foster Renewal

Experience a sense of vitality and growth.

Open Possibilities

Discover new opportunities and paths.

Create Space

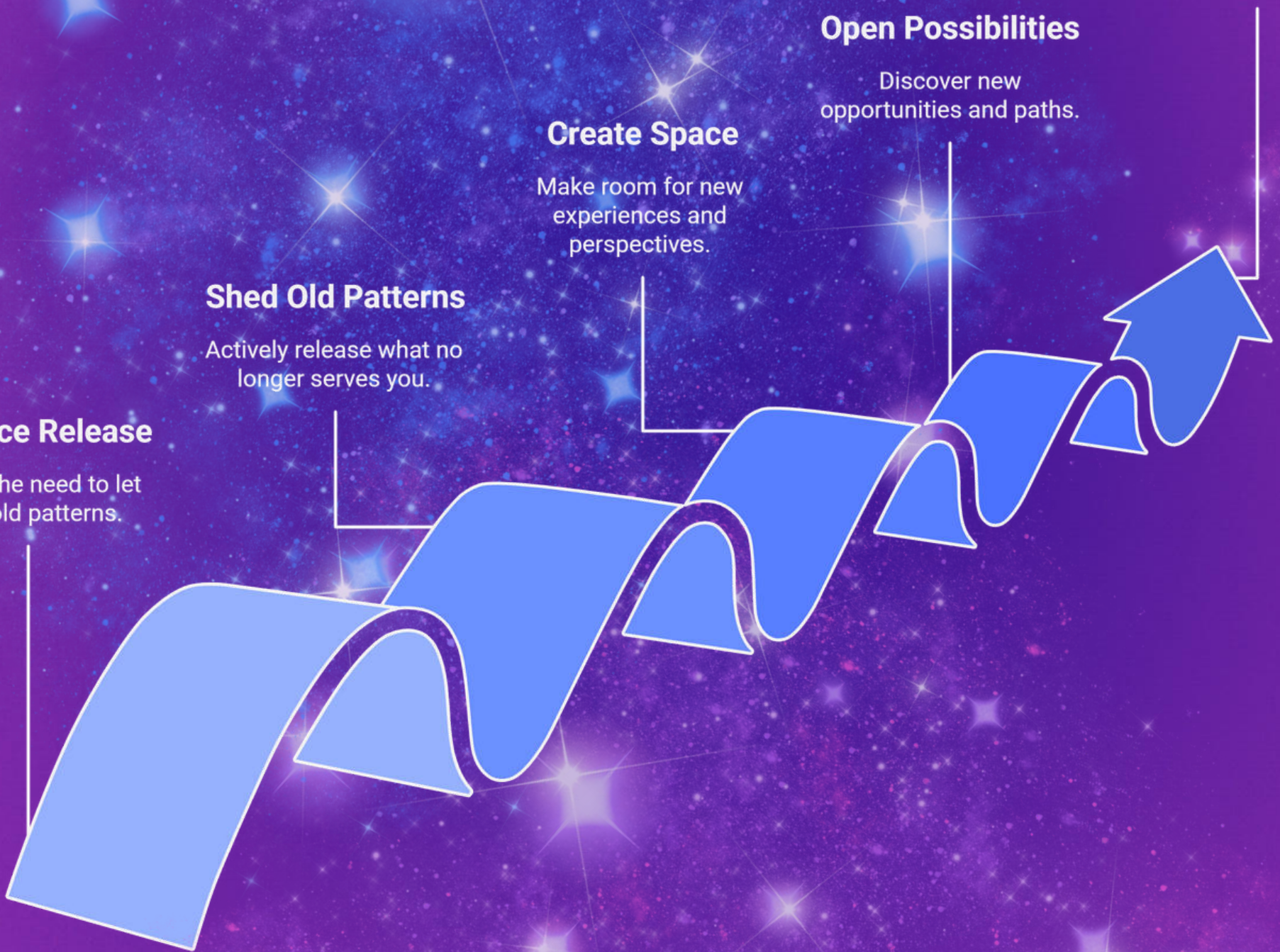
Make room for new experiences and perspectives.

Shed Old Patterns

Actively release what no longer serves you.

Embrace Release

Accept the need to let go of old patterns.

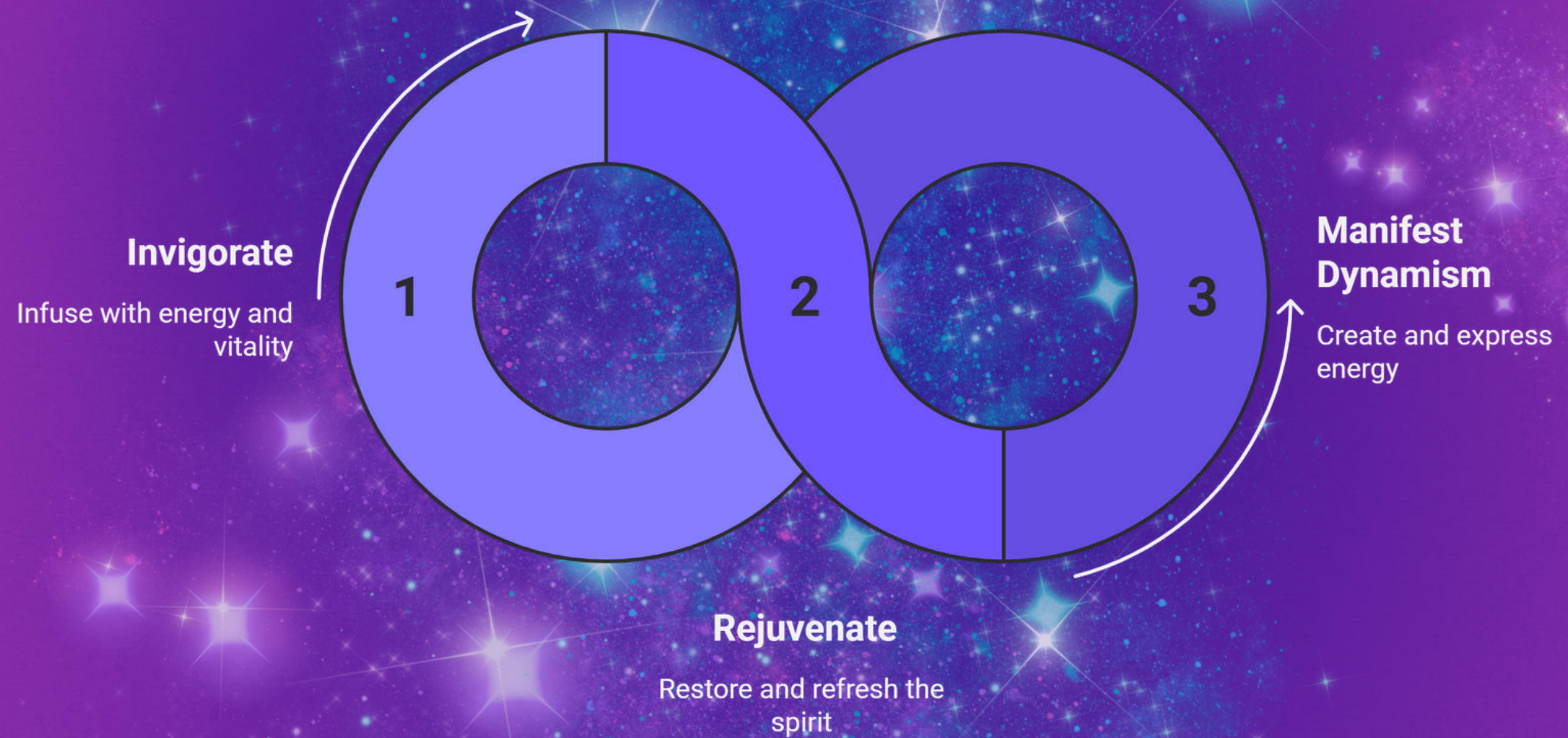




XIII

LIFE

Cycle of Life Energy



12 Faculties OF Divine Mind

