

REU Cooling & Heating Evaporator

With High Efficiency Blowers



REU16 Evaporator shown

Cruisair's REU remote evaporators are draw-through, ductable cooling units with rotatable, variable-speed blowers and integral water-displacing condensate pans. Featuring a high-efficiency permanent split capacitor (PSC) blower in which the motor is concealed, the REU series is available in capacities from 4-16K BTU/hr (20, 24, 30, and 36k units use a shaded pole motor).

The REU series was designed for installation low in a closet, cabinet, or other enclosed space, with discharge air ducted to one or more grilles high in the cabin. One or two evaporators can be used with a single Cruisair type condensing unit of matched capacity. Please contact the Cruisair Applications department for assistance in design prior to installation.

REU units can be used with a combination of plenums and flexible duct, or built-in ductwork may be used. The included hose adapter (4-36K units) is used to connect flexible duct to the blower outlet. If you are using built-in ductwork, a flexible transition between the blower and duct should be installed.

A vibration-isolation mounting kit is included with each REU unit to simplify installation. The PSC blower is supported by a sturdy aluminum bracket with isolation grommets to further reduce possible vibration. The blower performs favorably in higher static pressure conditions. The internal motor housing results in a narrower unit and promotes quieter operation.

The condensate pan, blower housing, and all other metal surfaces over which air passes are covered with insulating foam which reduces noise and secondary condensation.

The "positive flow" condensate pan has an anti-slosh, antifungal foam lining. Condensation is displaced through two 1/2" FPT drains, which are located on the rear of the pan (blower side). Condensate removal is accomplished by the pan's unique raised center.

Cruisair DX evaporators can be controlled using the new SMXht or SMXir keypad/displays operating on the SMX II or SMX Net microprocessor control systems. A mechanical rotary-knob switch assembly is also available.



Key Benefits

- Compact ductable cooling or heating unit.
- Rotatable, variable speed blower.
- Insulated condensate pan with anti-slosh, antifungal foam lining.
- High-efficiency blower.
- Air filter included.
- "Positive Flow" water displacing condensate pan.
- High efficiency evaporator coil.
- Larger blower inlet for increased air flow across coil.
- Single piece shroud and coil enclosure.
- Hose adapter included on 4-36K units.
- Blower bracket with vibration isolation grommets installed.
- Mounting kit included.
- Increased metal thickness on structural parts for strength.
- For use with water-cooled and air-cooled condensers. Air-cooled product line is limited to models 4-16K.

Technical Specifications for REU Evaporators

Item Number	Model Number	Capacity (BTU/hr)	Voltage (50/60Hz)	Blower Amps	Height (in/mm)	Width (in/mm)	Depth (in/mm)	Weight (lb/kg)	Air Flow (cfm/cmh)
715012001 715012403	RE20C RE24C	20,000 24,000	230	0.80	18.25/463.55	19.75/501.65	16.50/419.10	35.00/15.88	667/1133.40 800/1359.40
715013000 715013601	RE30C RE36C	30,000 36,000	230 230	4.00 8.00	20.25/514.35	19.75/501.65	17.50/444.50	42.00/19.05	1000/1699.20 1200/2039.00
715000401 715010402	REU4 REU4C	4,000	115 230	0.78 0.51	9.25/234.95	12.50/317.50	9.25/234.95	10.00/4.54	133/255.99
715000502 715010501	REU5 REU5C	5,000	115 230	0.78 0.51	9.25/234.95	12.50/317.50	9.25/234.95	10.00/4.54	166/282.07
715000701 715010702	REU7 REU7C	7,000	115 230	1.74 0.98	11.25/285.75	13.75/349.25	10.00/254.00	14.00/6.35	233/395.91
715000802 715010801	REU8 REU8C	8,000	115 230	1.74 0.98	11.25/285.75	13.75/349.25	10.00/254.00	14.00/6.35	266/451.99
715001003 715011001	REU10 REU10C	10,000	115 230	1.32 0.66	11.25/285.75	14.25/361.95	11.75/298.45	18.00/8.16	333/565.83
715001202 715011203	REU12 REU12C	12,000	115 230	1.12 0.56	11.25/285.75	14.25/361.95	11.75/298.45	18.00/8.16	400/697.68
715001601 715011604	REU16 REU16C	16,000	115 230	2.09 0.56	13.25/336.55	15.75/400.05	11.75/298.45	24.00/10.89	533/905.67

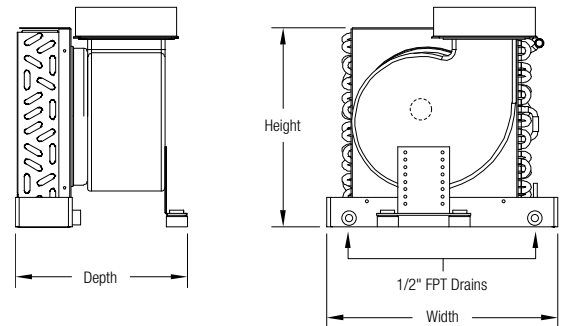
Notes:

• Hose adapter height = 2.0937" additional to height of blower outlet

Interpreting Model Numbers

RE	U	12	C
Remote Evaporator	Blower Type U: High-efficiency PSC internal blower motor	Capacity X 1,000 BTU/hr	Voltage C: 230V Blank: 115V

Capacity BTU/hr	Minimum Grille Sizes (sq in/cm)		Minimum Duct (in/mm)
	Return	Discharge	
4,000	64/413	32/206	4/102
5,000	64/413	32/206	4/102
7,000	80/516	45/290	5/127
8,000	89/574	47/303	5/127
10,000	100/645	60/387	6/152
12,000	130/839	70/452	6/152
16,000	160/1032	80/516	7/178
20,000	200/1290	110/710	9/229
24,000	240/1548	140/903	9/229
30,000	350/2258	170/1097	10/254
36,000	360/2323	196/1265	10/254



DOMETIC CORPORATION, ENVIRONMENTAL DIVISION
 2000 N. Andrews Ave. Ext. | Pompano Beach, FL 33069 USA | 954-973-2477 | Fax 954-979-4414
 P.O. Box 15299 | Richmond, VA 23227 USA | 804-746-1313 | Fax 804-746-7248
 www.DometicEnviro.com | sales@DometicEnviro.com

United States & Canada Service Only:
 8:00 AM to 5:00 PM Eastern Time | Marine Air AC Products: 954-973-2477
 Cruisair AC Products: 804-746-1313

24/7 AC SERVICE HOTLINE: 5:00PM to 8:00 AM: 888-440-4494

International Sales & Service:
 Europe & the Middle East: Call +44(0)870-330-6101
 For all other areas visit our website to find your nearest distributor.

Dealer:

