

EasyTouch Wi-Fi

iPhone® and Android®

Application Operating Manual

**Micro-Air Corporation
124 Route 526
Allentown, NJ 08501**

**Phone (609) 259-2636
www.microair.net
Fax (609) 259-6601**

Table of Contents

EasyStart Wi-Fi Application:	2
Program Start:.....	2
Selecting an EasyTouch:	3
Controlling EasyTouch:	3
Accessing EasyTouch outside the local network:	4
Setting up your router for internet access:.....	4

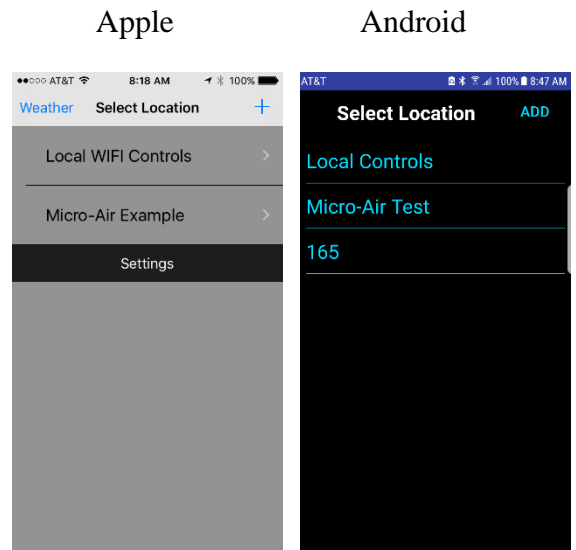
EasyStart Wi-Fi Application:

The EasyTouch Wi-Fi application is the smart phone companion to the EasyTouch Wi-Fi thermostat. Download and install the application on your smart phone from the Apple store or Google Play to begin controlling your thermostat. Follow the setup instructions in the EasyTouch manual to connect your thermostat to the local router’s wireless connection. Your phone must be connected to the same local router subnet so the application can find the connected controls.

Program Start:

Android and iPhone applications will search for local controls whenever the application is started.

1. Android: A search bar will appear at the top of the screen and at the conclusion of the search the select location screen will appear. The search may be skipped when connecting to controls not connected to the local network by pressing “Skip Search” at the top of the screen.
2. iPhone: The spinner will appear for a few seconds then the application will show the locations screen. If controls are found, the app will show the select control screen.



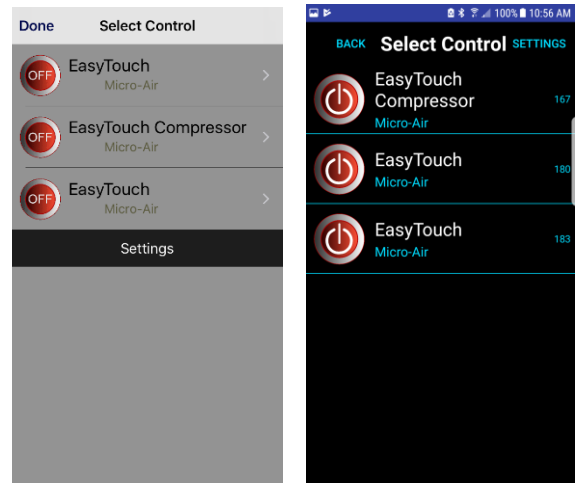
Selecting an EasyTouch:

Select a control from the list of available controls to make changes or monitor that control.

These controls can be individually named if desired:

1. Android: Press and hold the control name to enter the editor.
2. iPhone: slide the control name to the left and select “edit” to enter the editor.

Change the control location name to a memorable name like aft salon, guest cabin or front AC. Change the location category if you need additional description for the control such as lower deck or engine room.



Controlling EasyTouch:

Once the desired control is selected, simply select the desired fan speed mode and set point.

Additional system details can be viewed by pressing the detail button. This view shows additional sensors, optional boards like EasyStart, humidity control, and output status.



Accessing EasyTouch outside the local network:

Accessing EasyTouch from outside the local network requires setting up a DDNS service and changes to your router. This section outlines those steps and explains what is required.

Setting up your router for internet access:

Step 1: Set up a router or PC with a DDNS service.

What's a DDNS service? A DDNS service is a paid service that tracks your local IP address so that you are visible on the internet from anywhere. This means if your Wi-Fi network to which your EasyTouch is connected moves from one place to another, access will be available whenever the internet is connected.

How do I select a DDNS service? The best way is to select a service that is compatible with your router. Most routers allow one or more different DDNS providers. Follow your routers setup instructions for enabling a DDNS service and select a provider from the available list. Go to the provider's website and follow the instructions for creating the service. When you sign up for the service, you will select a web address and password that you will enter into the router to complete the DDNS setup.

If a service is used that your router does not support, you will need a DDNS client installed on a PC or network device that runs all the time. The client is just a PC program that you run and setup just like the setup in the router.

Step 2: Enable port forwarding in your router to one EasyTouch IP address. Follow your routers setup instructions to forward an external port (over 1024 for most ISP's) to the IP address of the EasyTouch you selected and use port 80 as the port to forward to.

What is "Port Forwarding" and how do I enable it? Port forwarding allows requests from outside your network to reach devices inside the network without risking the security of other devices on your local network. To enable it, open to your routers setup page and find the page for port forwarding, usually under the "Application and Gaming" or "Forwarding" tab. Add an entry for the IP address using the "From" or "Service" port as some number between 1024 and 65000 and the "To" or "Internal" port as port 80. Set the protocol selection to "All".

Step 3: Enter the web address and port in the EasyTouch application.

Where do I enter the address? Press the + (iPhone) or Add (Android) button from the select location screen to enter a new location.

What address do I enter in the iPhone application? If you chose, for example, a noip.com address of MyWonderfulYacht.noip.me as your DDNS address and you selected port 12345 as your port, you would enter MyWonderfulYacht.noip.me:12345 as the global address in the iPhone™ AirNet 5i application. The app will automatically connect to the appropriate address when the app is started. Do not add HTTP:// or WWW.