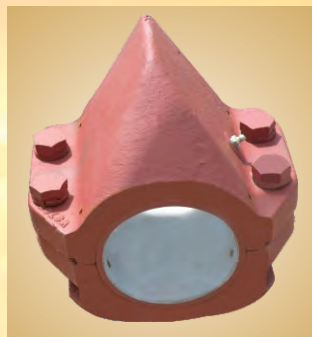
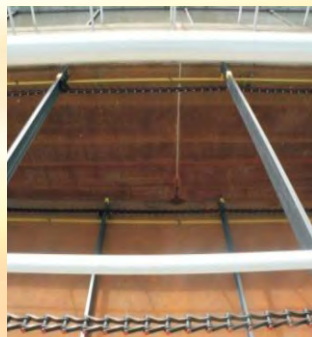


www.fairfieldservice.com

FAIRFIELD SERVICE COMPANY

Providing excellence in Service, Product, and Value in our efforts to support the Water, Wastewater, and Material Conveyance industries since 1978.

RECTANGULAR CLARIFIER EQUIPMENT & COMPONENTS



Water & Wastewater Treatment Equipment



FAIRFIELD SERVICE COMPANY

FAIRFIELD SUPPLIED ITEMS OF EQUIPMENT

- ▶ **Mechanical System Design**
- ▶ **Process System Design**
- ▶ **DAF Units**
- ▶ **Screw Conveyors**
- ▶ **Helical Skimmers**
- ▶ **Electrical Control Panels**
- ▶ **Wastewater Screens**
- ▶ **Start Up Services**
- ▶ **Rectangular Collectors**
- ▶ **Grit Collectors**
- ▶ **API Oil/Water Separators**
- ▶ **Scum Troughs**
- ▶ **Flight Monitoring Systems**
- ▶ **Water Screens**
- ▶ **On Site Training**

CALL : +1-740-387-3335

FAX : +1-740-387-4685

www.fairfieldservice.com



INDEX

Products	Page No.
General System	1 to 9
FSCI-720 S NM Chain	10
FSCI-NH 78 NM Chain	11
FSCI-SS 714 Chain	12
FSCI-SS 715 Chain	13
FSCI-SS 78 Chain	14
FSCI-720 S Cast Chain	15
FSCI-H78 Cast Chain	16
FSCI Chain Part Number Selection	17
SPROCKET	18 to 22
Combination Split Sprocket	19
Combination Split Chain Saver Sprocket	19
720 Split Sprockets	19
CS720 Split Chain Sprocket	19
Combination Dish Sprocket	20
78 Series Standard Shear Pin Sprocket	20
Trip Cam Sprocket	20
Combination Dish Sprocket Replacement Teeth	20
78 Series Sprocket type (Chain Tensioner)	20
Saddle type (Chain Tensioner)	20
Jaw Clutch Sprocket	21
FSCI Sprocket Part Number Selection	22
STATIC SHAFT BUSHING & SET COLLAR	23 to 24
Static Bushing & Set Collar.....	23
FSCI Static Bushing & Set Collar Part Number Selection	24
WALL BEARING	25 to 27
Top Peak Split	25
Pillow Block Split	25
Triangle Mount	26
Non Metallic	26
FSCI Wall Bearing Part Number Selection	27
FLIGHT COMPONENT	28 to 35
"C" Channel Fiberglass Flight Board	28
Fiberglass Flight Board Drawing	29
Ultra Frp Flight	30
Laminated wood flight Board	31
Fsrebar Lumber	32
Laminated wood flight & Fsrebar Lumber Drawing	33
Aluminum Flight Board	34
FSCI Flight Part Number Selection	35
Filler Block	36
Wear Shoe	36
FSCI Filler Block & Wear Shoe Part Number Selection	37
WEAR STRIP	38
RETURN RAIL SUPPORT	38
FSCI Wear Strip & Return Rain Part Number Selection	39
STUB SHAFT	40
FSCI Stub Shaft Part Number Selection	41
FLIGHT MONITORING SYSTEM	42
FSCI Flight Monitoring System Part Number Selection	43
SCUM TROUGH	44
FSCI Scum Trough Part Number Selection	45
FSCI PROXIMITY SENSORS	46
FSCI HARDWARE	47
FSCI LOOP CHAIN	47

CALL : +1-740-387-3335

FAX : +1-740-387-4685



Enviro Products

CHAIN

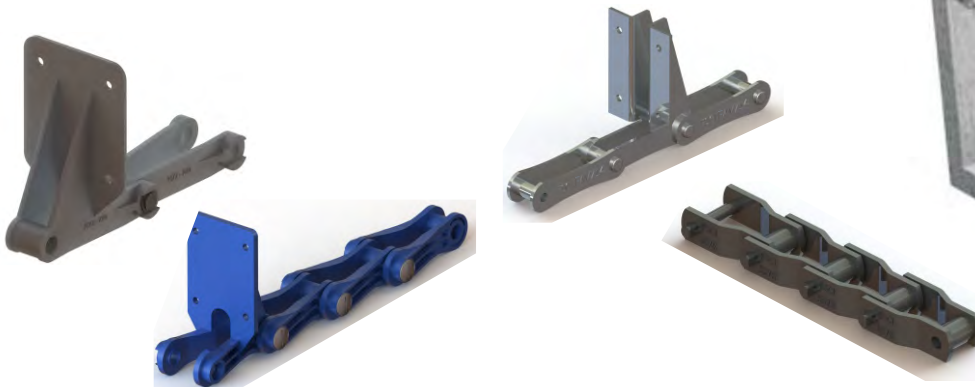
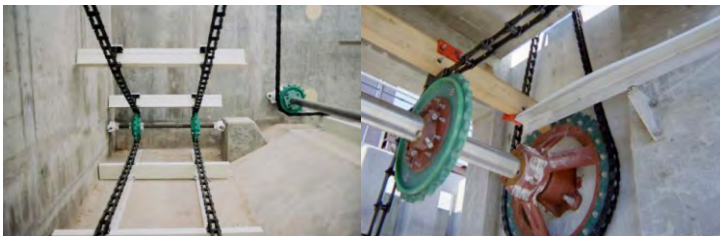
Fairfield Chains Group Enviro Division Your System Provider

The Fairfield Chains Group-Enviro Division has been providing quality components for Municipal and Industrial Water & Wastewater applications for over 35 years.

System projects of all sizes are handled 100% by Fairfield Group. We continue to link a chain of satisfied clients around the world.

Our years of chain experience supports our application and engineering promise of being a "solution provider". We believe it's essential to provide on site service and client consultation to properly assess the customer's goals and individual application requirements.

Our quality products include Chain, Sprockets, Flights, Wear Shoes, Bearings, Shafts, and Static Sleeve Bushings. Practically every consumable in Clarifiers, Grit Channels, Bar Screens, Traveling Water Screens for all water and waste water applications are supplied by Fairfield.



CALL : +1-740-387-3335

FAX : +1-740-387-4685

www.fairfieldservice.com



FAIRFIELD SERVICE COMPANY

Fairfield Service Company was officially formed in 1978 as a subsidiary of Fairfield Engineering Company, which was founded in 1919. The FAIRFIELD SERVICE COMPANY was formed to fulfill Fairfield Engineering Company's desire to expand its material handling knowledge into the municipal Wastewater treatment industries.

Today, **Fairfield Service Company** offers a wide variety of wastewater headworks and conveying equipment to accommodate the requirements of both new and existing facilities. FSCI also offers a diverse background in the design and manufacturing of custom-built equipment resulting from Fairfield Engineering Company's many years of experience in servicing the municipal and industrial markets.

FSCI utilizes industry leading technology to combine all disciplines of experience and technical knowledge for generating design, details, and calculations for the convenience of the customer and improved efficiency of operation.

At Fairfield Service company our most important business is satisfying our customer's goals, along with supplying state-of-the-art equipment and developing modern innovations to treat the water resources for today's and future generations.

> BAR SCREENS

THE CLAW	Rack & Pinion	Front Clean	Front Return
THE MACH	Chain & Sprocket	Front Clean / Back Clean Front	Front / Back Return
CANTENARY	Chain & Sprocket	Catenary Front clean	Back Return
THE CAF	Cable Front	Front Clean	Back Return
HFF	Hydraulic	Front Clean	Front Return
LOCK LINK			

TRAVELING WATER SCREEING

> FINE SCREENS

- ROTARY DRUM SCREEN
- STREAM GUARD

> COMPACTORS CONVEYORS

- SCREW COMPACTOR (SCREENING WASHING / COMPACTOR)
- BELT CONVEYORS
- SCREW CONVEYORS (SHAFTED & SHAFT LESS)

> GRIT COLLECTORS

- BELT CONVEYORS
- SCREW CONVEYORS
- SB
- AERATED
- BUCKET ELEVATORS
- Chain & Bucket
- Chain & Flight
- Screw & Elevator
- Grit Screw

> SLUDGE COLLECTORS

- LONGITUDINAL COLLECTORS
- CROSS COLLECTORS

> TRASHRAKES

- Upon request, we can provide information on:
- Composting Equipment
- Flex-O-Wall Type Conveyors
- Drag Conveyors
- Radial Stacking Conveyors
- Live Bottom Bins
- Vertical and C-type Conveyors
- Shuttle Conveyors

CALL : +1-740-387-3335

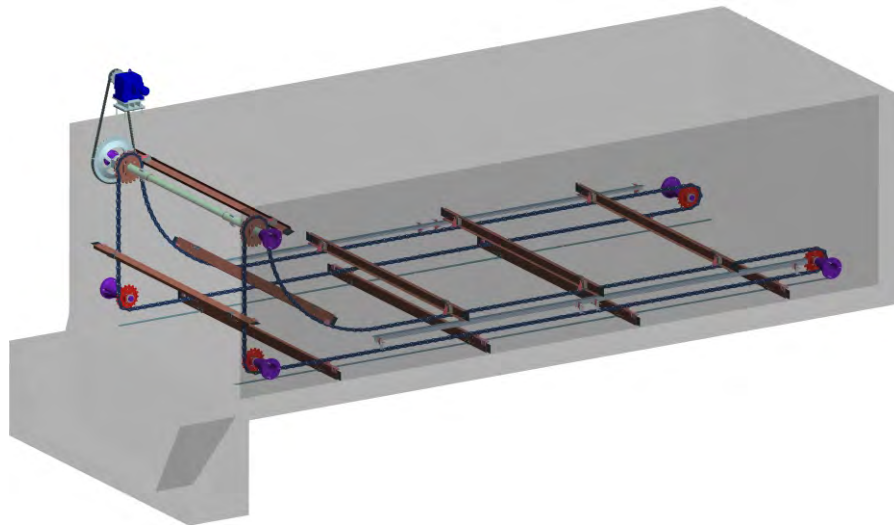
FAX : +1-740-387-4685

www.fairfieldservice.com

GENERAL SYSTEMS

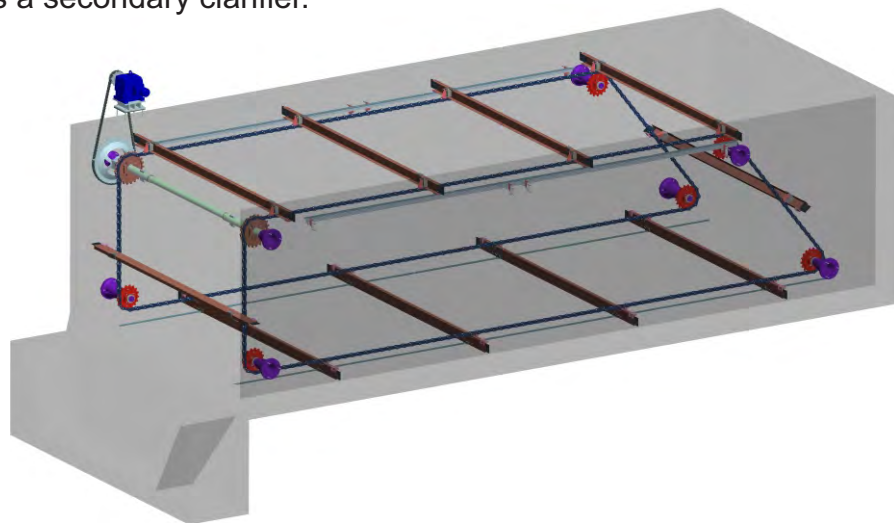
Three Shaft System

A Three Shaft System is usually encountered where only solids are to be removed from a settling tank. With this system, flights sweep the settled debris to a sludge hopper (as shown in the image below), where they are pumped away or removed by a cross collector system. Such systems are typically used for primary treatment where floating debris is not abundant. For secondary treatment and scum removal a Four Shaft System is typically used.



Four Shaft System

Water surface skimming as well as displacing settled solids can be achieved through use of a Four Shaft System. Debris such as scum, oil and grease can be removed efficiently through such collectors. This design can be used either as a primary clarifier as well as a secondary clarifier.



CALL : +1-740-387-3335

FAX : +1-740-387-4685

www.fairfieldservice.com

GENERAL SYSTEMS

Screw Conveyor Cross Collector

A Screw Conveyor Cross Collector may be used as an alternative to Chain and Flight Cross Collectors. It serves the same purpose of concentrating the sludge into a sump pit. This system can either be driven directly by a motor or indirectly by a chain drive system (as show in the image below). A long single hopper or span of many hoppers can be accommodated. Hanger bearings may be required depending on overall screw conveyor length.



Scum Trough Rotary Skimmers

From a design point of view, a Rotary Skimmer is the most economical and most common type of surface scum skimmer. It can be operated either manually (as shown), or through a motor, to accept scum floating on the water surface in a four shaft collector system.

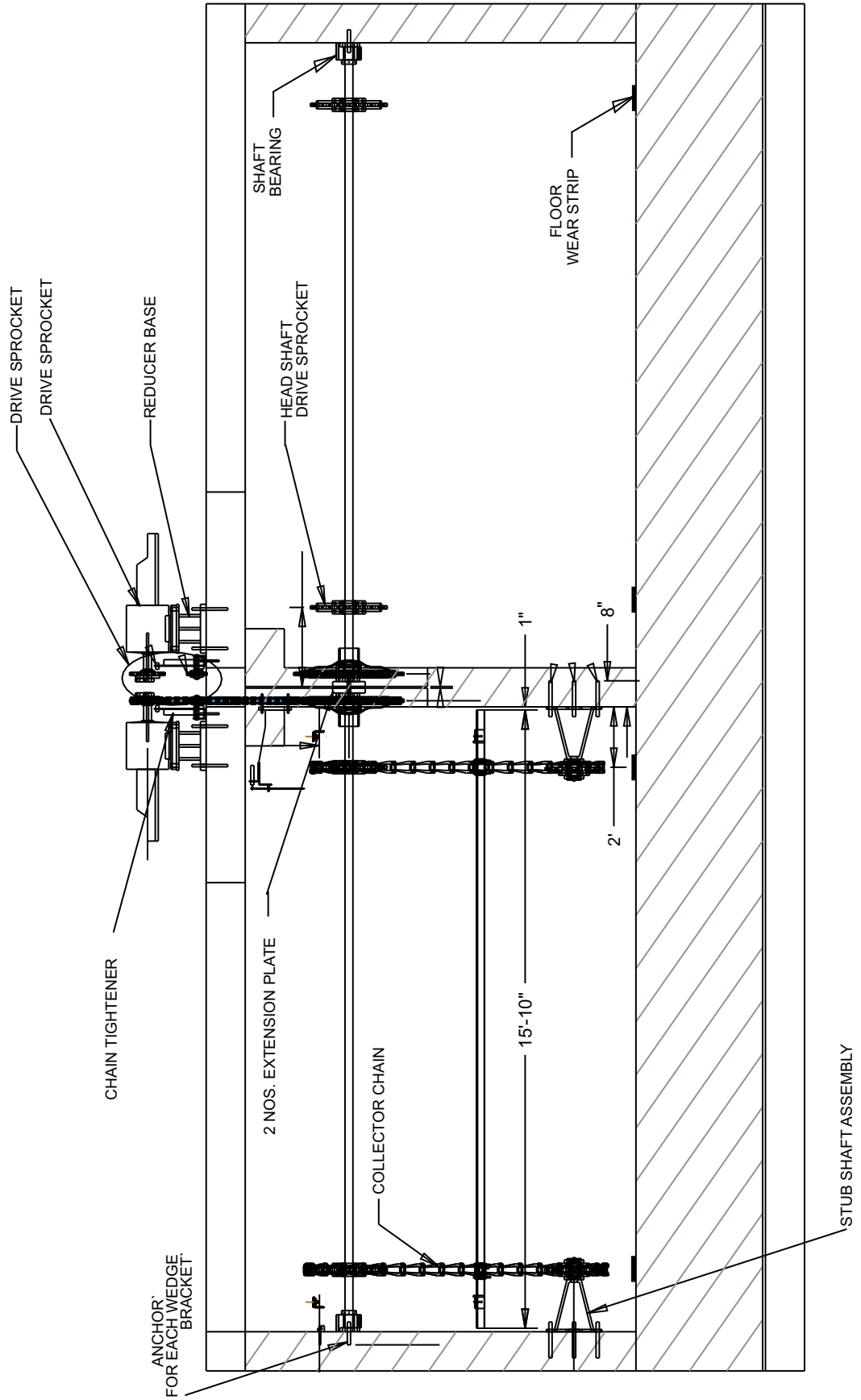


CALL : +1-740-387-3335

FAX : +1-740-387-4685

www.fairfieldservice.com

TYPICAL RECTANGULAR CLARIFIERS (SINGLE LAYER)

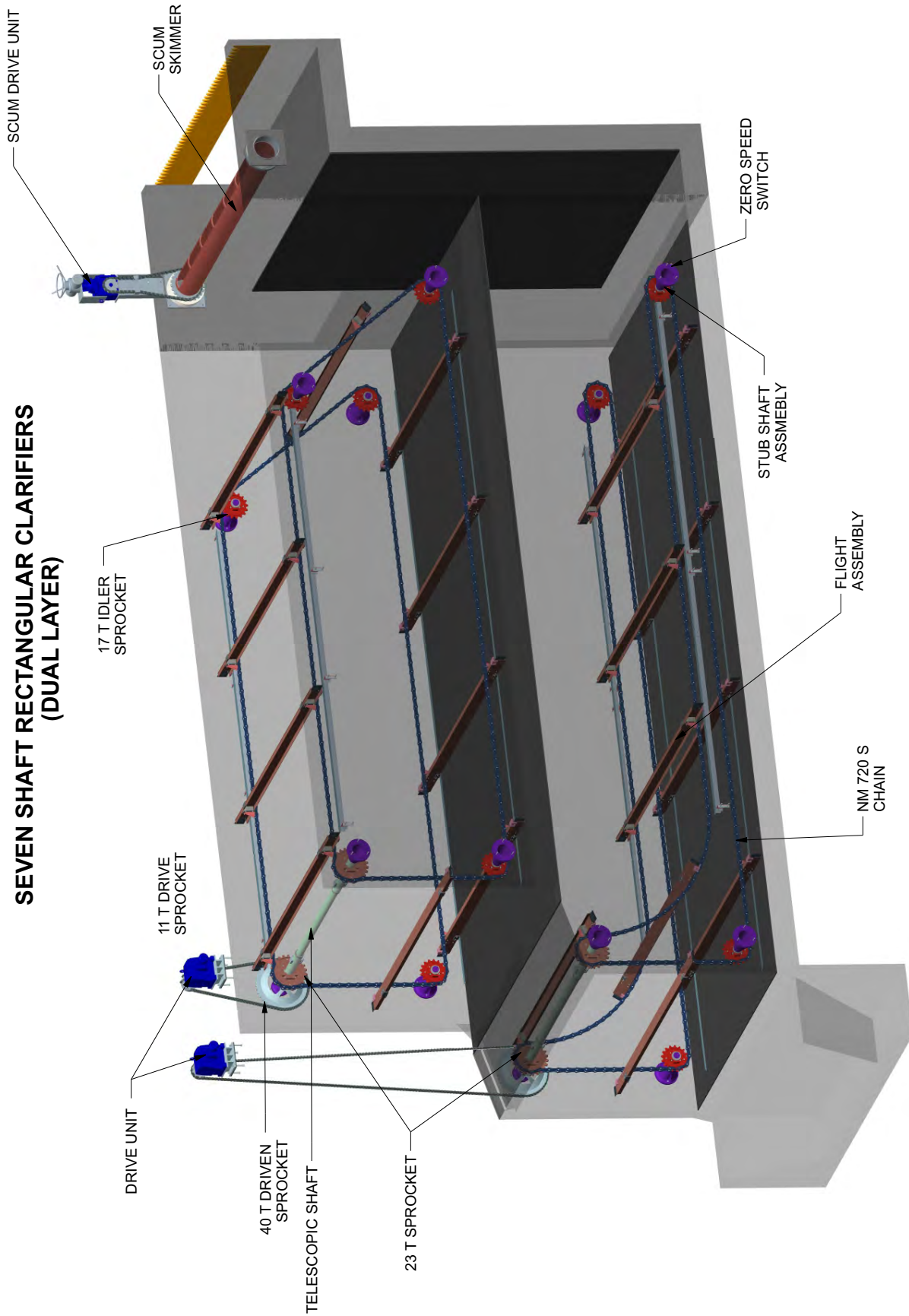


CALL : +1-740-387-3335

FAX : +1-740-387-4685

www.fairfieldservice.com

SEVEN SHAFT RECTANGULAR CLARIFIERS (DUAL LAYER)



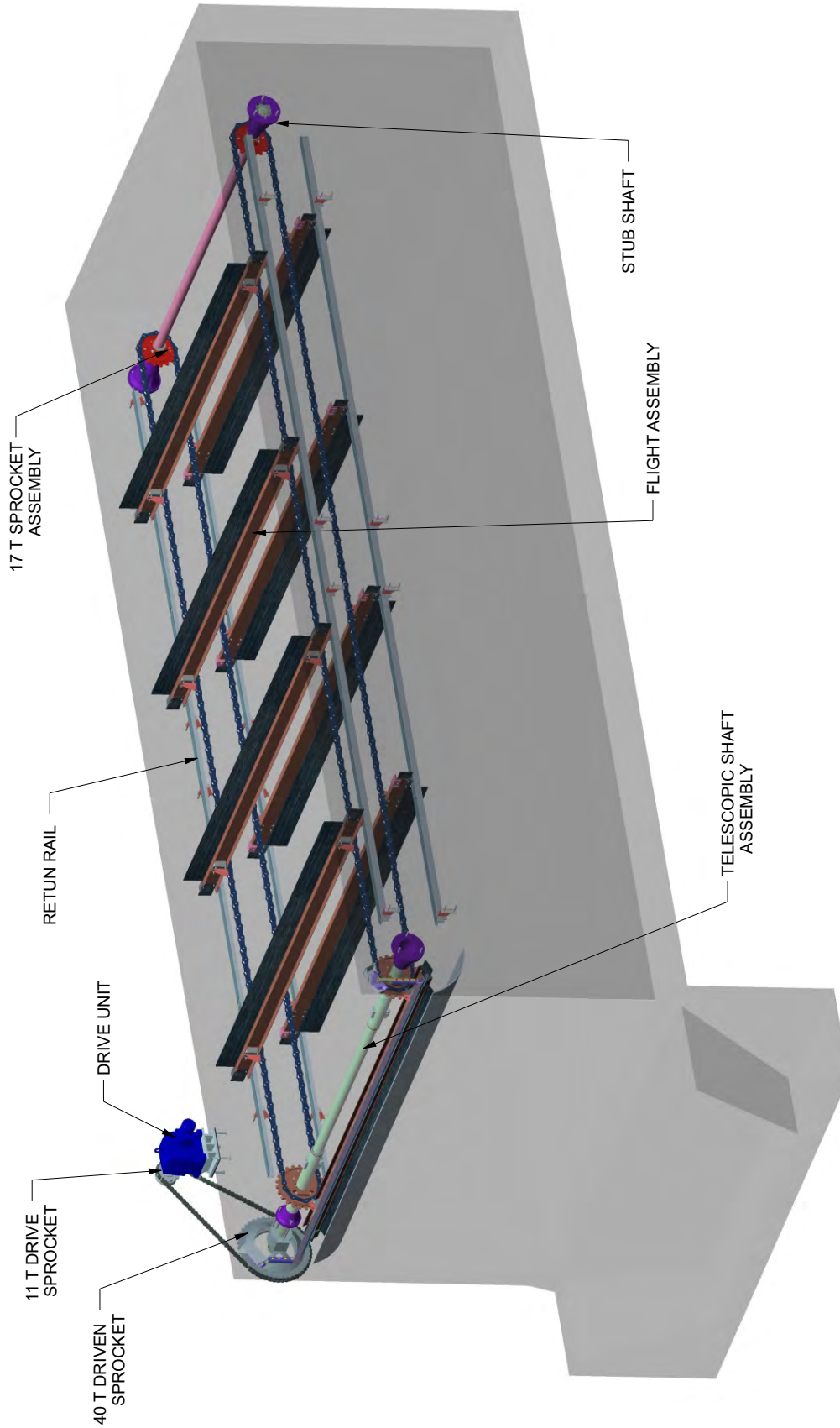
Seven shaft clarifiers can be assumed as dual layer classifier. The advantageous point here is that the effective cleaning capacity is doubled even with the same surface area as that of four shaft classifier.

CALL : +1-740-387-3335

FAX : +1-740-387-4685

www.fairfieldservice.com

DAF SLUDGE COLLECTOR



Dissolved Air Flotation (DAF) Clarifier are mainly used where there is a need of removing suspended solids from water. The mechanism of this clarifier includes emission of millions of micron sized bubbles which float the solid to the tank surface forming a concentrated sludge blanket. This thick layer is removed by a scoop.

CALL : +1-740-387-3335

FAX : +1-740-387-4685

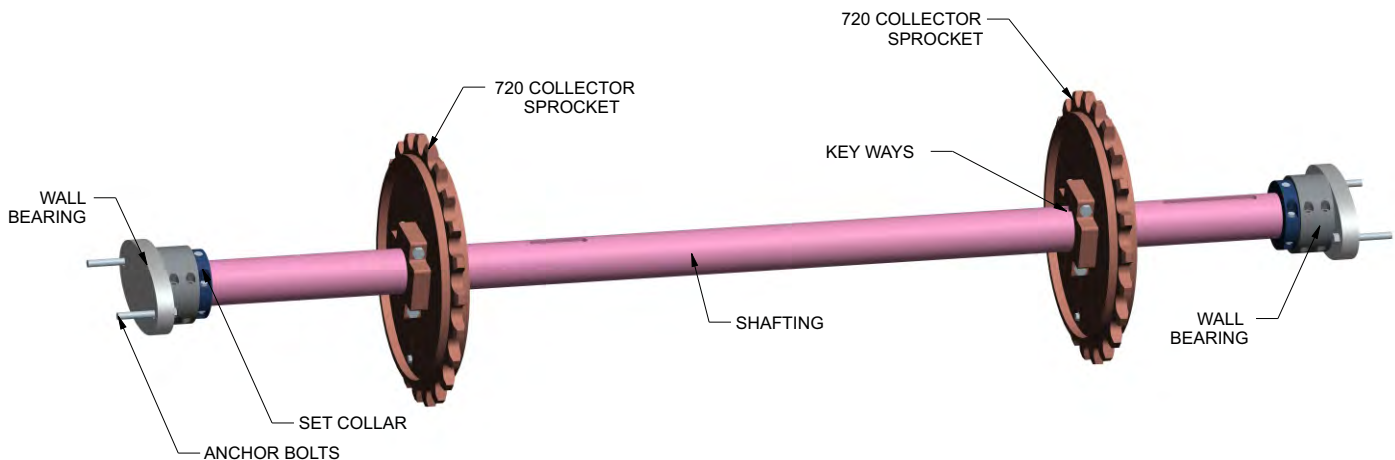
www.fairfieldservice.com



FAIRFIELD SERVICE COMPANY

Head Shaft (Typical)

For a rectangular clarifier, this shaft is considered as a driving shaft. It experiences greater forces than other shafts and normally has the greatest diameter as compared to other shafts, also known as idler shafts. Chain connected to the motor and reducer (drive) unit drives the driven sprocket. Typically the head shaft is made of C1018 or C1045 steel, other material like SS-304, SS-316, and tubular Fiberglass system are available. Wall bearings (which are supported with anchor bolts) are usually made of cast iron with different contact surface liners but can be made of many materials as per customer's request. The contact surface liners are usually of UHMW-PE or Babbitt. All sprockets are keyed and locked with set screws so that the collector chains are aligned and move together at the same rate. Keyways are adjusted in such a way that sprockets can be adjusted along the shaft for proper alignment. To hold the shaft in place at the bearing, a set collar is used, which can be made of variety of materials like UHMW-PE, cast iron, stainless steel and others as per customer's request. Sprockets may be provided individually cast, but are typically of split construction for easy assembly and future removal and replacement.

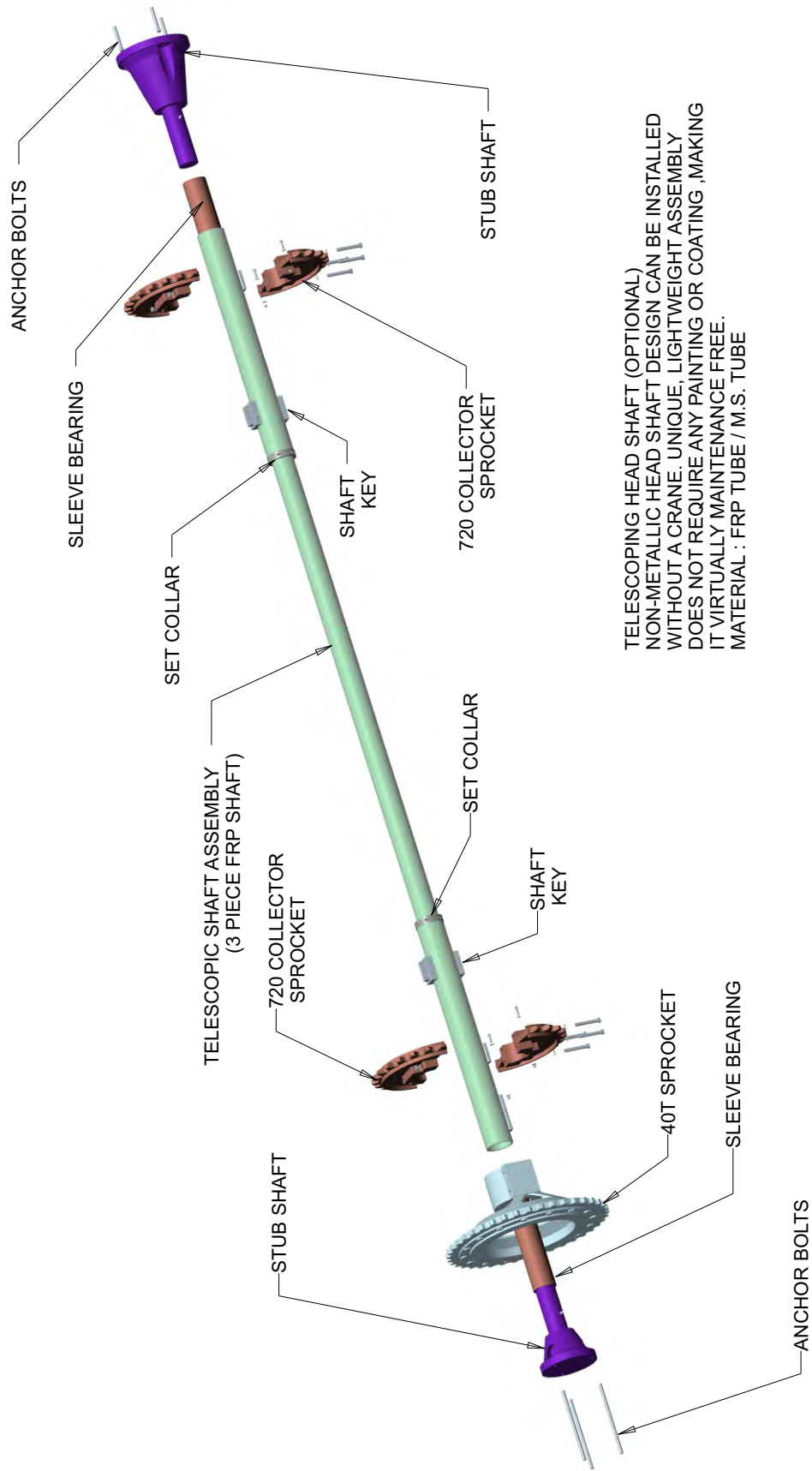


CALL : +1-740-387-3335

FAX : +1-740-387-4685

www.fairfieldservice.com

TELESCOPIC SHAFT (OPTIONAL)



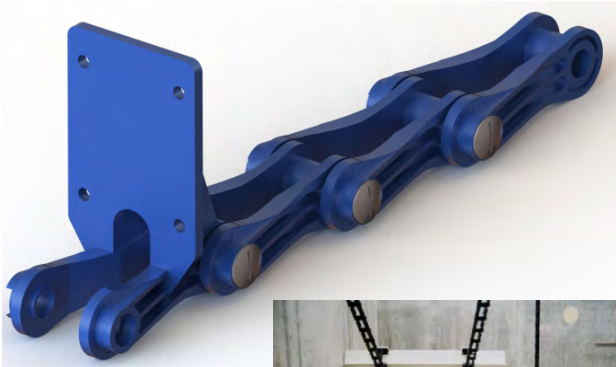
TELESCOPING HEAD SHAFT (OPTIONAL)
 NON-METALLIC HEAD SHAFT DESIGN CAN BE INSTALLED
 WITHOUT A CRANE. UNIQUE, LIGHTWEIGHT ASSEMBLY
 DOES NOT REQUIRE ANY PAINTING OR COATING. MAKING
 IT VIRTUALLY MAINTENANCE FREE.
 MATERIAL : FRP TUBE / M.S. TUBE

CALL : +1-740-387-3335

FAX : +1-740-387-4685

www.fairfieldservice.com

FSCI-720S NON-METALLIC CHAIN



FSCI-NM 720S CHAIN

CHAIN SPECIFICATION:

Non-Metallic Collector Chain

- ▶ 6.00" Pitch
- ▶ Nylon Material (1013 B)
- ▶ 3,100 lb. Working Load
- ▶ 6,000 lb. Average, Ultimate Strength
- ▶ 1.5 lbs Per Foot Approx.
- ▶ Nylon Material Pin With Aluminum Insert

ATTACHMENTS AVAILABLE:

- ▶ F226 and F228 (5' or 10' spacings)

CHAIN APPLICATION:

- ▶ Collector chain for primary and secondary clarifiers.

BENEFITS:

FSCI-720S Non-Metallic Chain is lightweight and designed for easy installation. No special tools are required for chain assembly. Chain is compatible with other chain manufacturer's non-metallic sprockets and components.

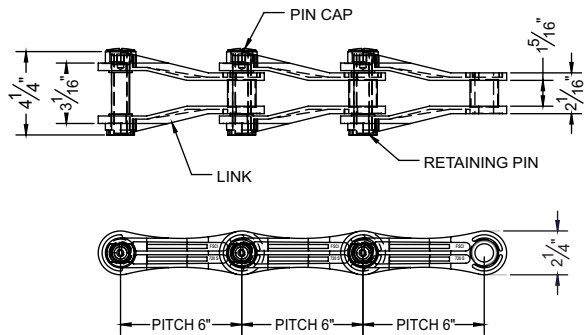


Fig. 1

Dimensions, Weight and Strength of FSCI-720S Non-Metallic Chain

Chain Part No	Pitch (inches)	Barrel Diameter (inches)	Pin Diameter (inches)	Working Load (lbs/ft)	Weight (lbs)
FFCBN720N00NT0AA	6.00	1.414	0.875	3,100	1.5

ATTACHMENT DATA : FSCI-720S NON-METALLIC/F228 & F226 (Fig. 2)

Attachment Part No.	A	B	C	D	E	F	G	H	Hole Dia.
FFCBN720NA8NT0A0	3.00	8.00	5.625	2.375	4.50	0.33	3.75	5.50	0.438
FFCBN720NA6NT0A0	3.00	6.125	3.750	2.375	2.63	0.33	3.75	5.50	0.438

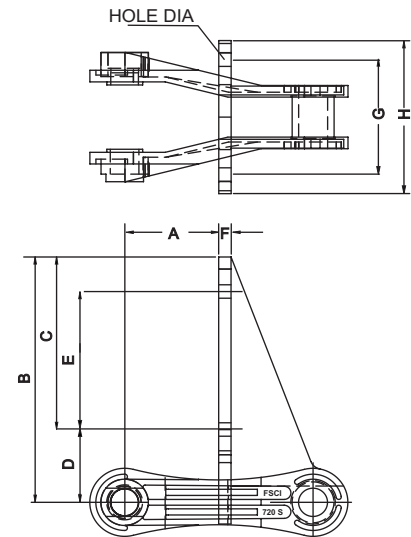


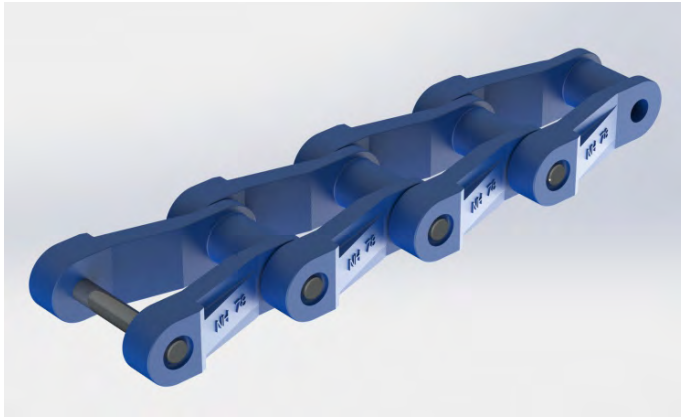
Fig. 2

CALL : +1-740-387-3335

FAX : +1-740-387-4685



FSCI-NH78 NON-METALLIC CHAIN



FSCI-NH78 CHAIN

CHAIN SPECIFICATION: Non-Metallic Drive Chain

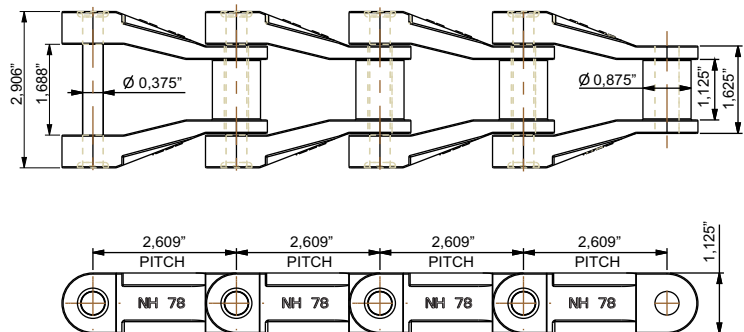
- ▶ Glass Filled Nylon Material
- ▶ 2.609" Pitch
- ▶ 316 Stainless Steel Knurled Pin
- ▶ No Cotters, Clips
- ▶ Standard 78 Series Sprockets
- ▶ Maximum Working Load 1,800 lbs
- ▶ 4,000 lbs Average Ultimate Strength
- ▶ UV Inhibited Highly Resistant

APPLICATIONS:

- ▶ Drive chain for wastewater treatment applications.

BENEFITS:

FSCI-NH78 chain is designed to run in both directions. Excellent performance in applications requiring high Wearability and chain strength.



Dimensions, Weight and Strength of FSCI-NH78 Non-Metallic Chain

Attachment Part No.	Backflex Radius (inches)	Maximum Permissible Tensile Force (lbs.)	Weight (lbs/ft.)
FFCANH78N006N0B0	3	1800	1.41

CALL : +1-740-387-3335

FAX : +1-740-387-4685

www.fairfieldservice.com

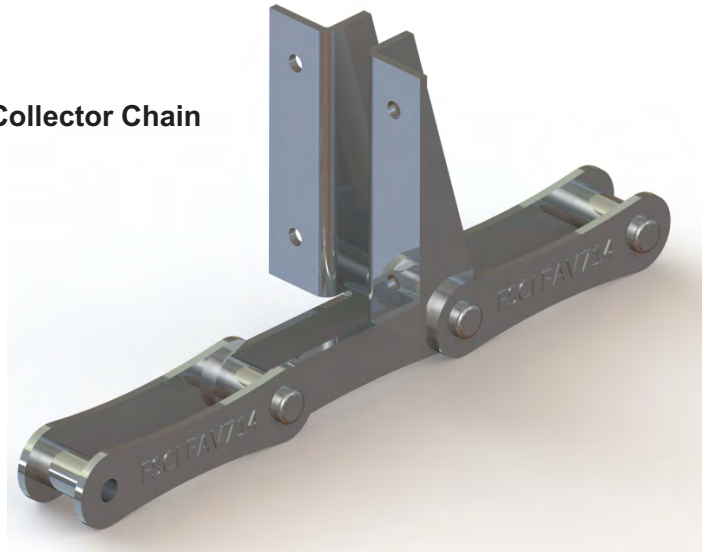


700 SERIES STAINLESS CHAIN

FSCI-FAV714 CHAIN

CHAIN SPECIFICATION: Stainless Steel Collector Chain

- ▶ FSCI-FAV714 CHAIN
- ▶ 6.00" Pitch
- ▶ 304 Grade Stainless Steel Material
- ▶ Maximum working load 5000 lbs
- ▶ 28,000 lb. Average Ultimate Strength
- ▶ 3.9 lbs Per Foot
- ▶ J Cotter Pins and Bushings



BENEFITS :

FSCI-FAV714 stainless steel chain is a lightweight chain designed to withstand highly corrosive environments. Provides superior performance in long length clarifiers with high loads and longer chain life in high grit and abrasive environments. Designed to be compatible with FSCI-FAV714 series chain saver sprockets and with other stainless steel chain manufacturer's components. Can be used with either fiberglass, laminated wood, fsci fsrebar lumber or aluminum flights.

ATTACHMENTS AVAILABLE:

- ▶ F226, F228, D22, K2, A2, A42, AM116

APPLICATIONS:

- ▶ For use in primary and secondary clarifiers, grit collectors, and bar screens.

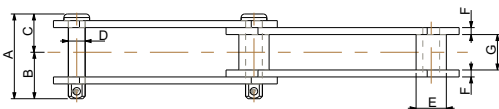
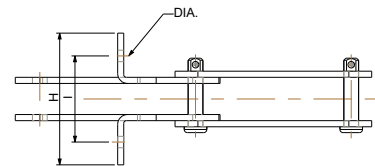


Fig. 1

Chain Part No.	A	B	C	D	E	F	G	H	I	Pitch (J)
FFCBF7144004J0A0	2.844	1.563	1.281	0.569	1.024	0.234	1.188	1.578	1.891	6.00



Attachment Part No.	A	B	C	D	E	F	G	H	I	Hole Dia.	Weight Per Atta.
FFCBF7144A84J0A0	3.00	7.875	0.891	1.484	4.50	1.00	0.234	5.50	3.75	0.438	3.5
FFCBF7144A64J0A0	3.00	6.109	0.891	1.50	2.625	1.093	0.234	5.50	3.75	0.438	2.6

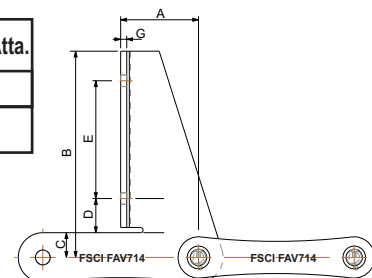


Fig. 2

CALL : +1-740-387-3335

FAX : +1-740-387-4685

www.fairfieldservice.com

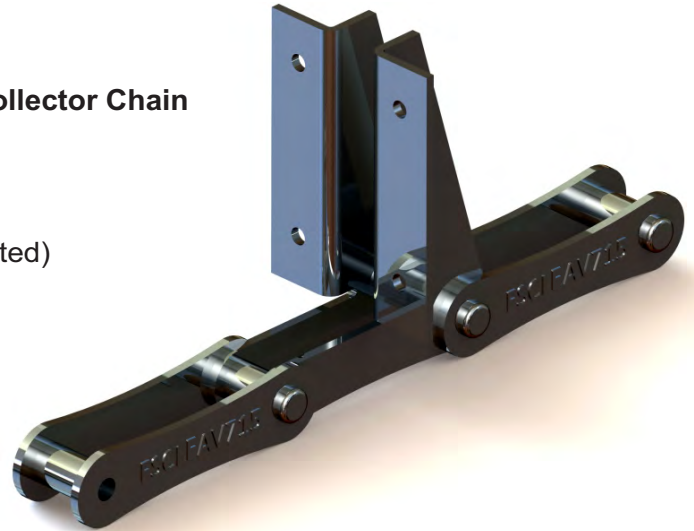


700 SERIES STAINLESS CHAIN

FSCI-FAV715 CHAIN

CHAIN SPECIFICATION: Stainless Steel Collector Chain

- ▶ FSCI-FAV715 CHAIN
- ▶ 6.00" Pitch
- ▶ 403 Grade Stainless Steel Material (heat treated)
- ▶ Maximum working load 5000 lbs
- ▶ 33,000 lb. Average Ultimate Strength
- ▶ 3.9 lbs Per Foot
- ▶ Hardened Pins and Bushings



BENEFITS :

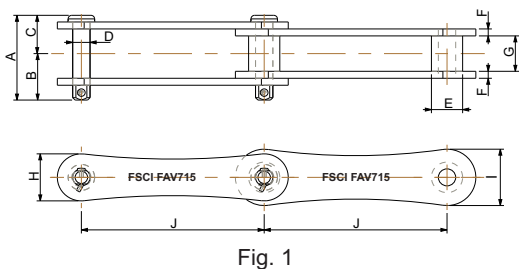
FSCI-FAV715 stainless steel chain is a lightweight chain designed to withstand highly corrosive environments. Provides superior performance in long length clarifiers with high loads and longer chain life in high grit and abrasive environments. Designed to be compatible with FSCI-FAV715 series chain saver sprockets and with other stainless steel chain manufacturer's components. Can be used with either fiberglass, laminated wood, fsci fsrebar lumber or aluminum flights.

ATTACHMENTS AVAILABLE:

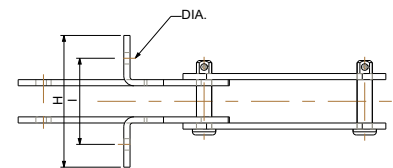
- ▶ F226, F228, D22, K2, A2, A42, AM116

APPLICATIONS:

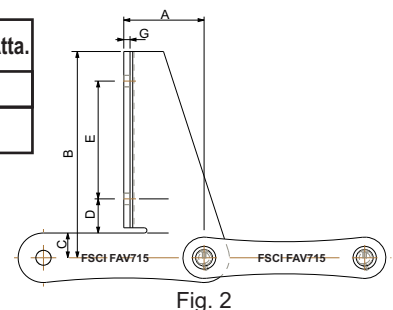
For use in primary and secondary clarifiers, grit collectors, and bar screens.



Chain Part No.	A	B	C	D	E	F	G	H	I	Pitch (J)
FFCBF7154004J0A0	2.844	1.563	1.281	0.569	1.024	0.234	1.188	1.578	1.891	6.00



Chain Part No.	A	B	C	D	E	F	G	H	I	Hole Dia.	Weight Per Atta.
FFCBF7154A84J0A0	3.00	7.875	0.891	1.484	4.50	1.00	0.234	5.50	3.75	0.438	3.5
FFCBF7154A64J0A0	3.00	6.109	0.891	1.50	2.625	1.093	0.234	5.50	3.75	0.438	2.6



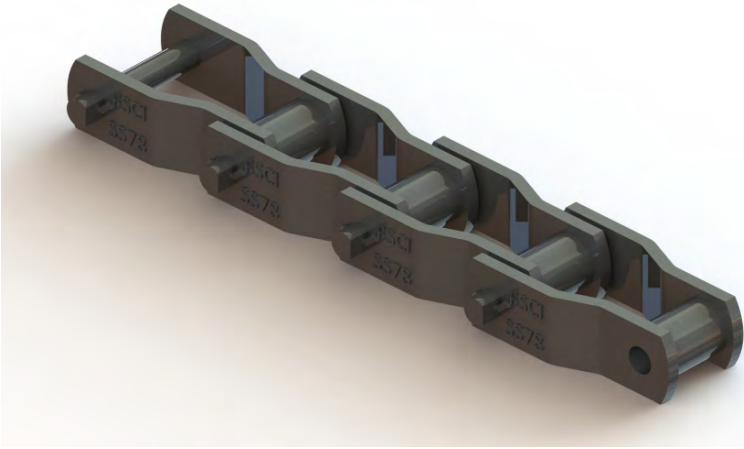
CALL : +1-740-387-3335

FAX : +1-740-387-4685

www.fairfieldservice.com



FSCI-SS78 STAINLESS STEEL CHAIN



FSCI-SS78 CHAIN

CHAIN SPECIFICATION: Stainless Steel Drive Chain

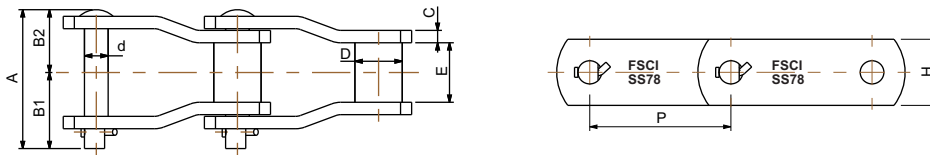
- ▶ 2.609" Pitch
- ▶ 403 Grade Stainless Steel Hardened-Material
- ▶ 24,000 lb. Average Ultimate Strength
- ▶ 3,300 lb. Working Load
- ▶ 3.9 lbs Per Foot

APPLICATIONS

- ▶ For use as a drive chain in wastewater treatment applications.

BENEFITS:

FSCI-SS78 stainless steel chain is a high strength chain made to withstand highly corrosive and abrasive environments. Designed to stand up to high load applications with very minimum stretch.



Chain Part No.	A	B1	B2	d	D	C	E	H	P (pitch)
FFASS783004J0A0	2.625	1.438	1.188	0.438	0.875	0.234	1.125	1.252	2.609

403 HARDENED STAINLESS STEEL CHAIN

MAXIMUM ABRASION AND CORROSION RESISTANCE

CAN BE USED WITH METALLIC OR NON-METALLIC STANDARD 78 SERIES



CALL : +1-740-387-3335

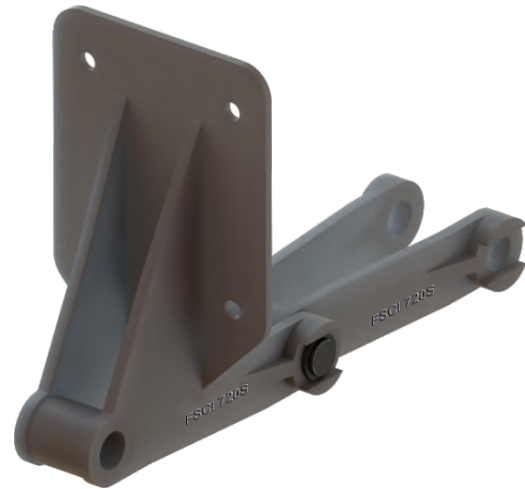
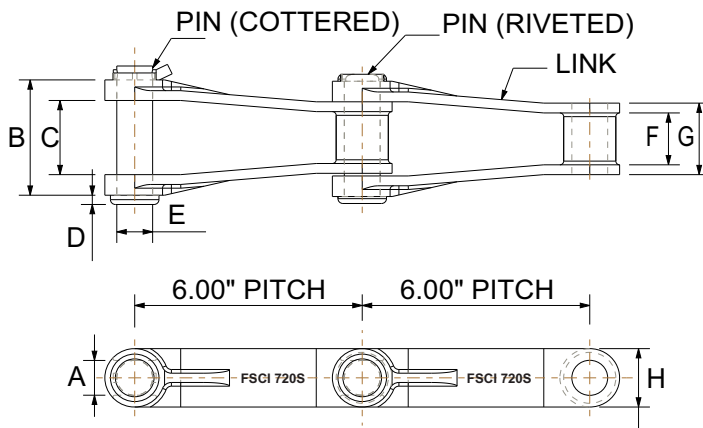
FAX : +1-740-387-4685

www.fairfieldservice.com



FSCI CAST IRON CHAIN

FSCI-720S CHAIN PMI



Malleable Cast Iron Chain

Chain Part No.	A	B	C	D	E	F	G	H	P (pitch)
FFCBM720C004J0B0	.843	3.110	2.000	.250	.945	1.399	1.929	1.575	6.00

17-4 Stainless Steel Cast Chain

Chain Part No.	A	B	C	D	E	F	G	H	P (pitch)
FFCBM7201004J0B0	.843	3.110	2.000	.250	.945	1.399	1.929	1.575	6.00

CHAIN SPECIFICATION:

Pearlitic Malleable Cast Iron

- ▶ 6.00" Pitch
- ▶ Heat Treated Pin
- ▶ 304 Stainless Steel Cotter
- ▶ Cottered or Riveted
- ▶ Cottered or Riveted
- ▶ Maximum Working Load: 4,250 lbs.
- ▶ Average Ultimate Strength: 39,000 lbs.
- ▶ Weight: 5.2 lbs./ft.

ATTACHMENTS AVAILABLE

- ▶ F226, F228, A2I, A42, A53, AD474, Am116, F2, F3 (SF-4), K2, MI.

APPLICATIONS

- ▶ For use in primary clarifiers, secondary clarifiers, bar screens and grit applications.

BENEFITS:

- ▶ FSCI-720S Cast Iron & SS Cast Chain offers maximum strength in harsh environments. This chain is interchangeable with other chains manufactured under ANSI standards. Heat treated pin and 304 stainless steel cotter supplied specifically for wastewater applications.

CHAIN SPECIFICATION:

Cast 17-4 Stainless Steel Chain

- ▶ 6.00" Pitch
- ▶ Heat Treated Pin
- ▶ Stainless Steel Cotter
- ▶ Cottered or Riveted
- ▶ Cottered or Riveted
- ▶ Maximum Working Load: 8,000 lbs.
- ▶ Average Ultimate Strength: 80,000 lbs.
- ▶ Weight: 5.8 lbs./ft.

CALL : +1-740-387-3335

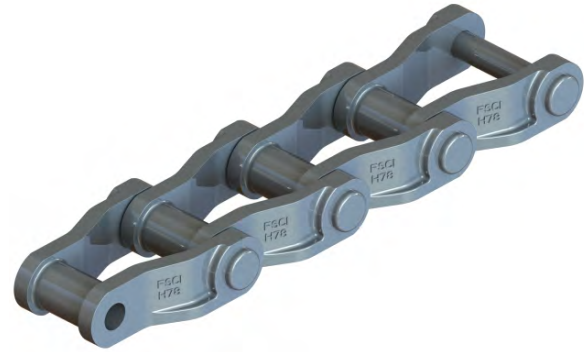
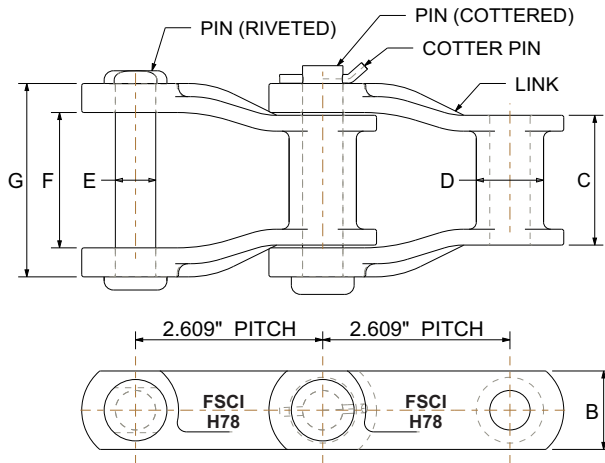
FAX : +1-740-387-4685

www.fairfieldservice.com



FSCI CAST IRON CHAIN

FSCI-H78 CHAIN PMI



Malleable Cast Iron Chain

Chain Part No.	A	B	C	D	E	F	G	P (pitch)
FFCA0H78C004J0B0	2.609	1.118	1.850	0.88	0.5	1.929	2.756	6.00

17-4 Stainless Steel Cast Chain

Chain Part No.	A	B	C	D	E	F	G	P (pitch)
FFCA0H781004J0B0	2.609	1.118	1.850	0.88	0.5	1.929	2.756	6.00

CHAIN SPECIFICATION:

Pearlitic Malleable Cast Iron Chain

- ▶ 2.609" Pitch
- ▶ Heat Treated Pin
- ▶ Drive Chain
- ▶ 304 Stainless Steel Cotter
- ▶ Meets ANSI Standards
- ▶ Cottered or Riveted
- ▶ Maximum Working Load: 2,850 lbs.
- ▶ Average Ultimate Strength: 22,300 lbs.
- ▶ Weight: 4.2 lbs./ft.

CHAIN SPECIFICATION:

Cast 17-4 Stainless Steel Chain

- ▶ 2.609" Pitch
- ▶ Heat Treated Pin
- ▶ Drive Chain
- ▶ Stainless Steel Cotter
- ▶ Meets ANSI Standards
- ▶ Cottered or Riveted
- ▶ Maximum Working Load: 4,500 lbs.
- ▶ Average Ultimate Strength: 35,000 lbs.
- ▶ Weight: 4.6 lbs./ft.

APPLICATIONS

- ▶ For use as a drive chain in wastewater treatment applications.

BENEFITS:

FSCI-H78 Cast Iron & SS Chain offers maximum strength in harsh environments. This chain is interchangeable with other chains manufactured under ANSI standards. Heat treated pin and 304 stainless steel cotter supplied specifically for wastewater applications.

CALL : +1-740-387-3335

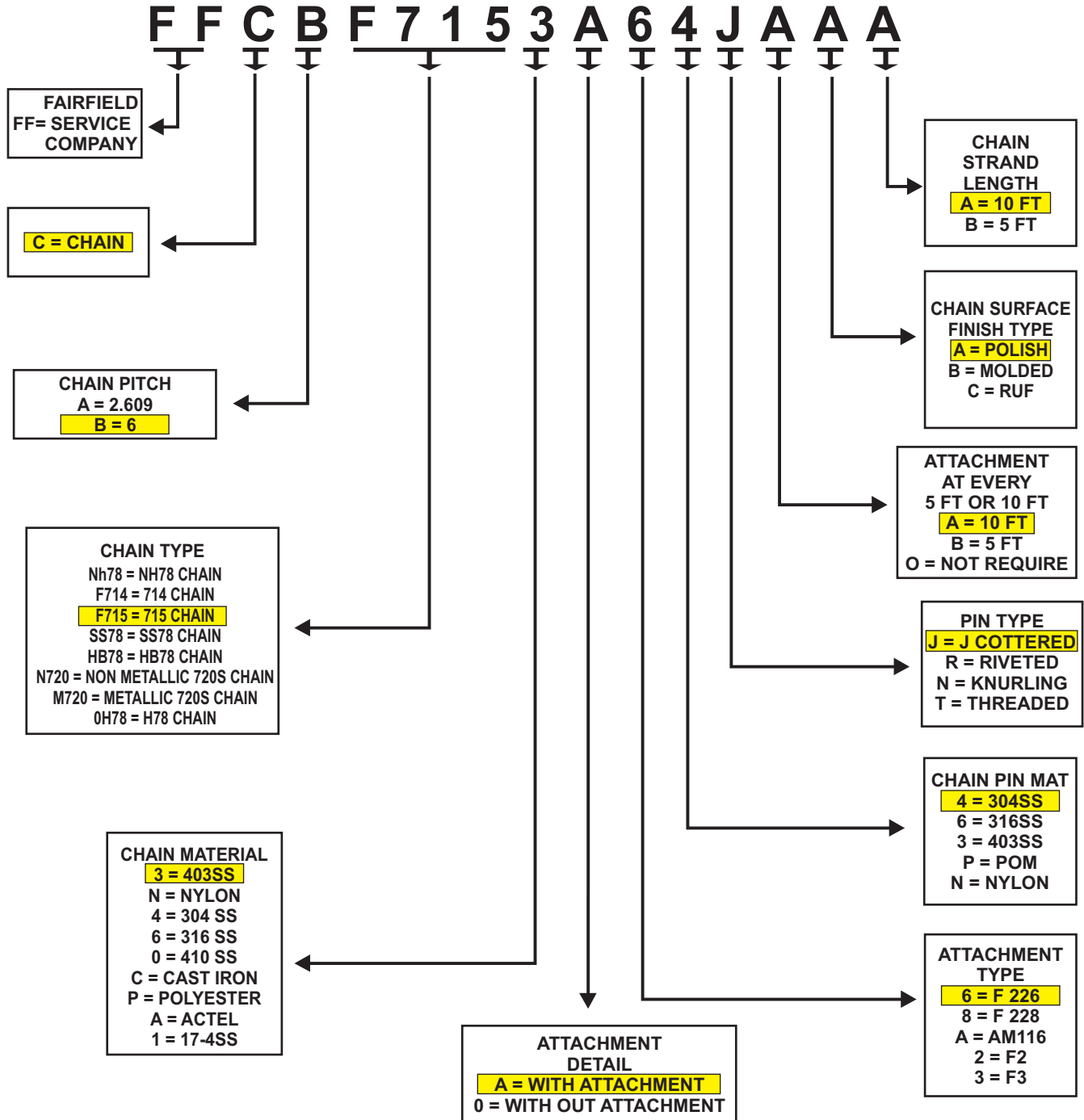
FAX : +1-740-387-4685

www.fairfieldservice.com



FSCI CHAIN PART NUMBER SELECTION

FSCI CHAIN PART NUMBER SELECTION



CALL : +1-740-387-3335

FAX : +1-740-387-4685

www.fairfieldservice.com



FSCI SPROCKET



SPROCKET DESIGNS AVAILABLE



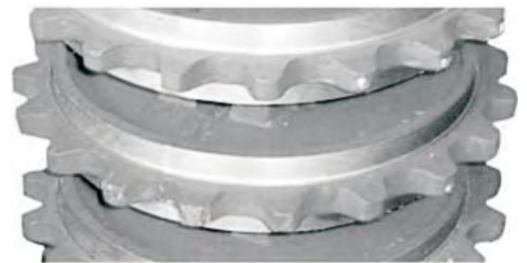
ALL UHMW SPROCKETS &
ALL UHMW SEGMENTAL RIM SPROCKETS



COMBINATION SPROCKETS - CAST IRON
BODY WITH UHMW SEGMENTAL RIMS



CAST IRON CHILLED RIM SPROCKETS



Cast Nylon Sprockets and Stainless Steel Sprockets also available

CALL : +1-740-387-3335

FAX : +1-740-387-4685

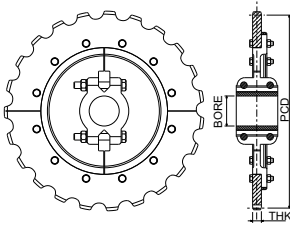
www.fairfieldservice.com



FSCI SPROCKET

Combination Split Sprocket

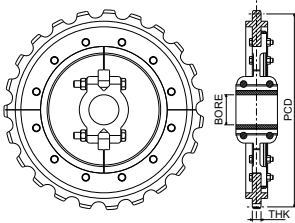
Material: Ductile Gray Iron hub & UHMW or S.S. or Harden Steel Sprocket (Black Color)



Part No.	Teeth No.	Max Drive Bore (in.)		
		Small	Medium	Large
FB11SCU00000S060	11	1-1/2 to 3-7/16	3-1/2 to 4-15/16	5.00 to 5-15/16
FB13SCU00000S060	13	1-1/2 to 3-7/16	3-1/2 to 4-15/16	5.00 to 5-15/16
FB17SCU00000S060	17	1-1/2 to 3-7/16	3-1/2 to 4-15/16	5.00 to 5-15/16
FB19SCU00000S060	19	1-1/2 to 3-7/16	3-1/2 to 4-15/16	5.00 to 5-15/16
FB21SCU00000S060	21	1-1/2 to 3-7/16	3-1/2 to 4-15/16	5.00 to 5-15/16
FB25SCU00000S060	23	1-1/2 to 3-7/16	3-1/2 to 4-15/16	5.00 to 5-15/16
FB11SCU00000S060	25	1-1/2 to 3-7/16	3-1/2 to 4-15/16	5.00 to 5-15/16

Combination Split Chain Saver Sprocket

Material: Ductile Gray Iron hub & UHMW or S.S. or Harden Steel Sprocket (Black Color)

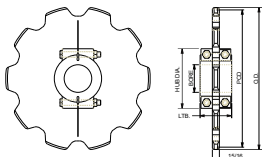


Part No.	Teeth No.	Max Drive Bore (in.)		
		Small	Medium	Large
FB13SCU00000SC64	13	1-1/2 to 3-7/16	3-1/2 to 4-15/16	5.00 to 5-15/16
FB17SCU00000SC64	17	1-1/2 to 3-7/16	3-1/2 to 4-15/16	5.00 to 5-15/16
FB19SCU00000SC64	19	1-1/2 to 3-7/16	3-1/2 to 4-15/16	5.00 to 5-15/16
FB21SCU00000SC64	21	1-1/2 to 3-7/16	3-1/2 to 4-15/16	5.00 to 5-15/16
FB23SCU00000SC64	23	1-1/2 to 3-7/16	3-1/2 to 4-15/16	5.00 to 5-15/16
FB25SCU00000SC64	25	1-1/2 to 3-7/16	3-1/2 to 4-15/16	5.00 to 5-15/16

720 Split Sprockets, Chain Pitch: 6.000

Material: UHMW (Black Color)

Roller Diameter 1-3/8"

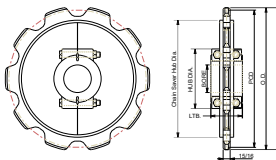


Part No.	Teeth No.	Pitch Dia.	Outside Dia.	Bore Stock (in.)	Max. Drive	Max Idler	Hub Dia.	Nom. LTB
FB13SC000000S064	13	12.91	13.50	1	3-1/4	3-5/8	7	4
FB17SC000000S064	17	16.59	17.09	1-3/4	3-15/16	5.00	8-7/8	4
FB19SC000000S064	19	18.45	18.95	1-3/4	3-15/16	5.00	8-7/8	4
FB21SC000000S064	21	20.33	20.83	1-3/4	3-15/16	5.00	8-7/8	4
FB23SC000000S064	23	22.21	22.71	1-3/4	3-15/16	5.00	8-7/8	4
FB25SC000000S064	25	24.10	24.60	1-3/4	4-1/2	6.00	10-1/2	4

CS720 Split Chain Sprockets, Chain Pitch: 6.000

Material: UHMW (Black Color)

Roller Diameter 1-7/16"



Part No.	Teeth No.	Pitch Dia.	Outside Dia.	Chain Saver Hub Dia.	Bore Stock (In.)	Max. Drive	Max Idler	Hub Dia.	Nom. LTB
FB13SC000000SC64	13	12.91	13.50	13.50	1	3-1/4	3-5/8	7	4
FB17SC000000SC64	17	16.59	17.09	17.09	1-3/4	3-15/16	5.00	8-7/8	4
FB19SC000000SC64	19	18.45	18.95	18.95	1-3/4	3-15/16	5.00	8-7/8	4
FB21SC000000SC64	21	20.33	20.83	20.83	1-3/4	3-15/16	5.00	8-7/8	4
FB23SC000000SC64	23	22.21	22.71	22.71	1-3/4	3-15/16	5.00	8-7/8	4
FB25SC000000SC64	25	24.10	24.60	24.60	1-3/4	4-1/2	6.00	10-1/2	4

CALL : +1-740-387-3335

FAX : +1-740-387-4685

www.fairfieldservice.com



FSCI SPROCKET

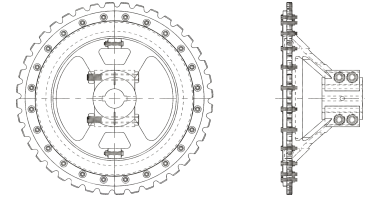
Combination Dish Sprocket:- Material: Ductile Gray Iron & UHMW (Black color)

The driven sprocket, also known as a bull gear, for the 78 chain that FSCI offers is the combination cast iron hub with attached UHMW segmented teeth. Cast iron hubs are stronger than non-metallic hubs and are longer lasting. This style sprocket is manufactured to fit the need of the tank's configuration with its design capabilities of various offsets and pitch diameters.

HUB MATERIAL : NYLON OR CI
TEETH MATERIAL : UHMW OR CI

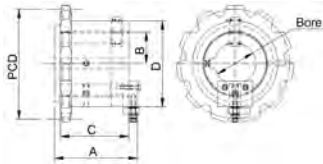
Part No.	Teeth No.	Offset
FA40SNU0000AS06A	40	6.5"
FA40SCU0000BS06A	40	6"

ALSO 42 & 48 TEETH SEGMENT AVAILABLE



78 Series Standard Shear Pin Sprocket

Material: Ductile Gray Iron & UHMW (Black color)

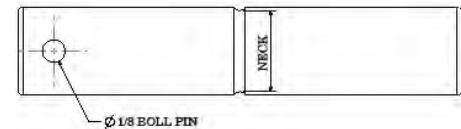


Part No.	Teeth No.	Pitch Dia.	Max. Bore	A	B	C	D
FA11SCC35KS00060	11	9.26	3.5	7	2.686	5.811	7.25
FA11SCC42KS00060	11	9.26	4.25	7.125	3.1875	5.875	8.25

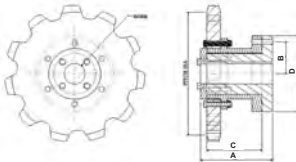
Shear Pin

Material: 304 Stainless Steel, Aluminum, Steel.

Shear Pin Dia. Inch	Shear Pin Neck Dia. inch	At Distance 'B' = 2.686" Torque (Lb-in)	At Distance 'B' = 3.1875" Torque (Lb-in)
0.5	0.25	7900	9500
0.5	0.31	12000	15000
0.5	0.38	17000	21500
0.75	0.44	23650	29000
0.75	0.5	31500	38000



Trip Cam Sprocket



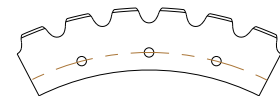
Material: Oil Filled Nylon (Green Color) & UHMW (Black color)

Part No.	Teeth No.	Pitch Dia.	Max. Bore	A	B	C	D	E
FA11SNN250000060	11	9.26	2-1/2	5-5/8	4-1/2	4-7/16	5-5/8	14-1/4

Combination Dish Sprocket Replacement Teeth

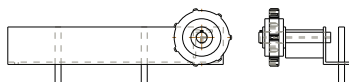
Material: UHMW (Black color) Sold in segments with teeth per segment

Part No.	Teeth No.	BCD
FA11SOU000000060	11	9.26
FA21SOU000000060	21	20.36
FA23SOU000000060	23	22.23
FA40SOU000000060	40	29
FA40SOU000000060	40	30



78 Series Chain Tensioner

Material: Sprocket Oil Filled nylon w/ UHMW (Black color) Bracket Material Carbon Steel or ductile iron



Part No.	Teeth No.
FSCICTN787TNYCI	7
FSCICTN788TNYCI	8

Saddle type Chain Tensioner



Snap Idler Tensioner, is the quickest and easiest drive chain tensioner to install on the market today. Simply mount the free-floating assembly around the drive chain strand and using the adjustable side plates reduce slack in the chain to the optimum location. The Snap Idler assembly does not require any anchor bolts to locate and place, and can be used with a wide variety of chain types.

CALL : +1-740-387-3335

FAX : +1-740-387-4685

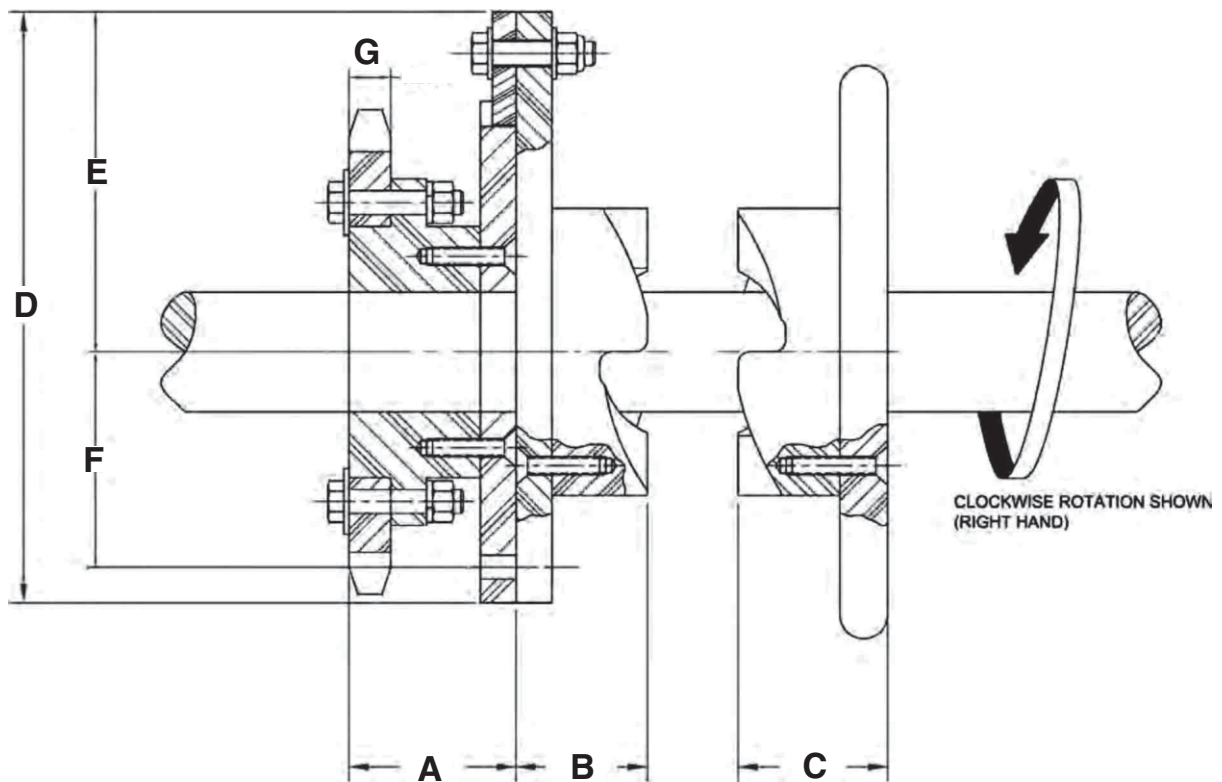
www.fairfieldservice.com



FSCI JAW CLUTCH SPROCKET

FSCI JAW CLUTCH SHEAR PIN DRIVE SPROCKET ASSEMBLY (NON METALLIC)

- Non-metallic shear pin sprockets will protect down line equipment without threat of seizure due to corrosion.
- Special tooth and bore size are available upon request.
- A shear pin is included in each unit.
- Will not rust.
- Replaceable sprocket rim.
- Easy installation.
- Nylon 6 and 304SS hardware are standard materials.
- Available in universal, clockwise, and counterclockwise rotation.



Chain Part No.	A	B	C	D	E	F	G	OF TEETH	PITCH DIA	MAX. BORE
FA11SNN250000060	3.5	2.75	3	12.38	7.125	4.5	.875	11	9.26	2.50

CALL : +1-740-387-3335

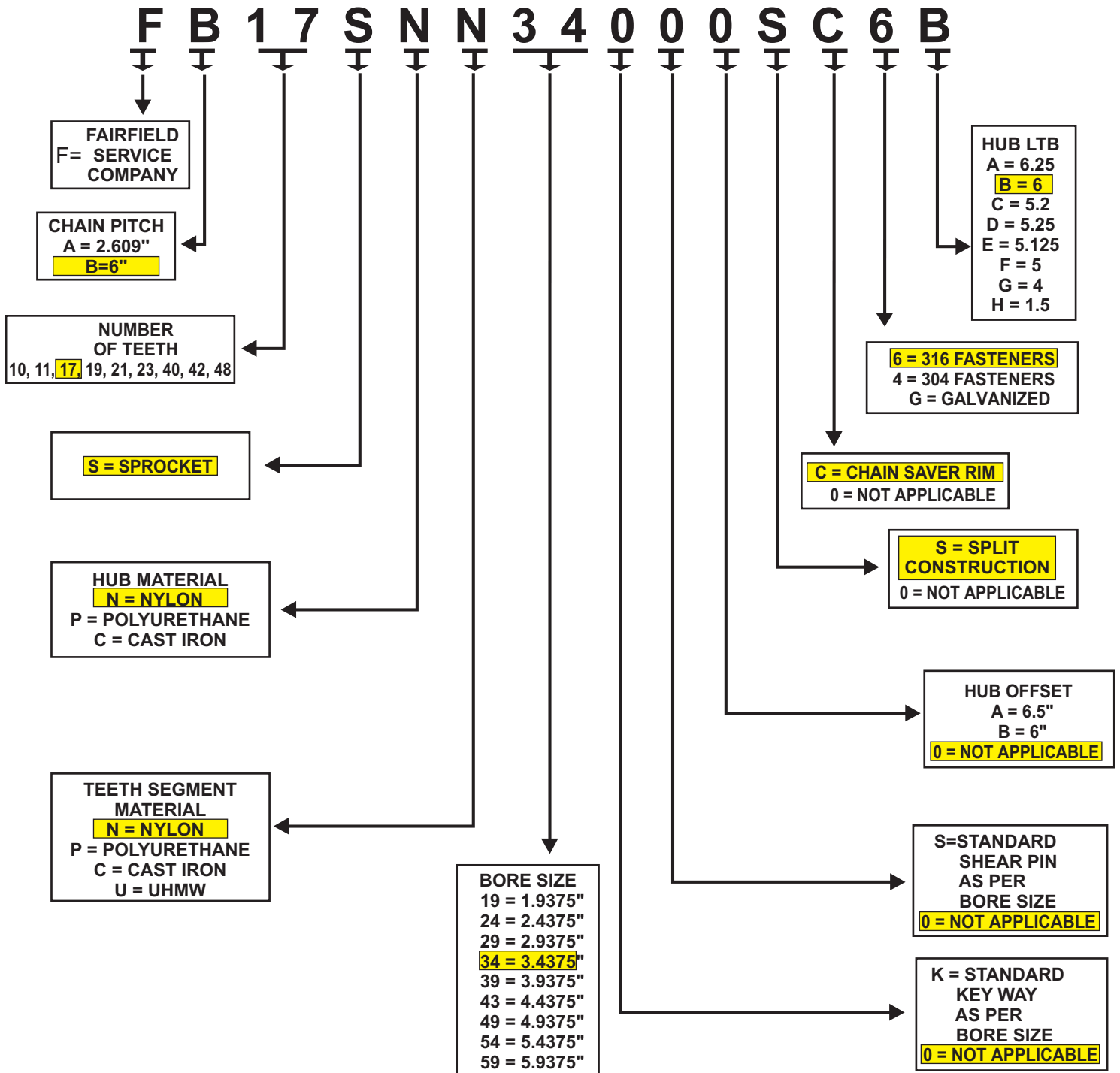
FAX : +1-740-387-4685

www.fairfieldservice.com



FSCI SPROCKET PART NUMBER SELECTION

FSCI SPROCKET PART NUMBER SELECTION



CALL : +1-740-387-3335

FAX : +1-740-387-4685

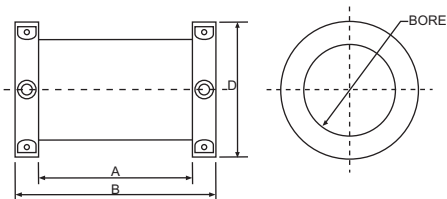
www.fairfieldservice.com



FSCI STATIC SHAFT BUSHING & SET-COLLAR

Static Shaft Bushing - Split

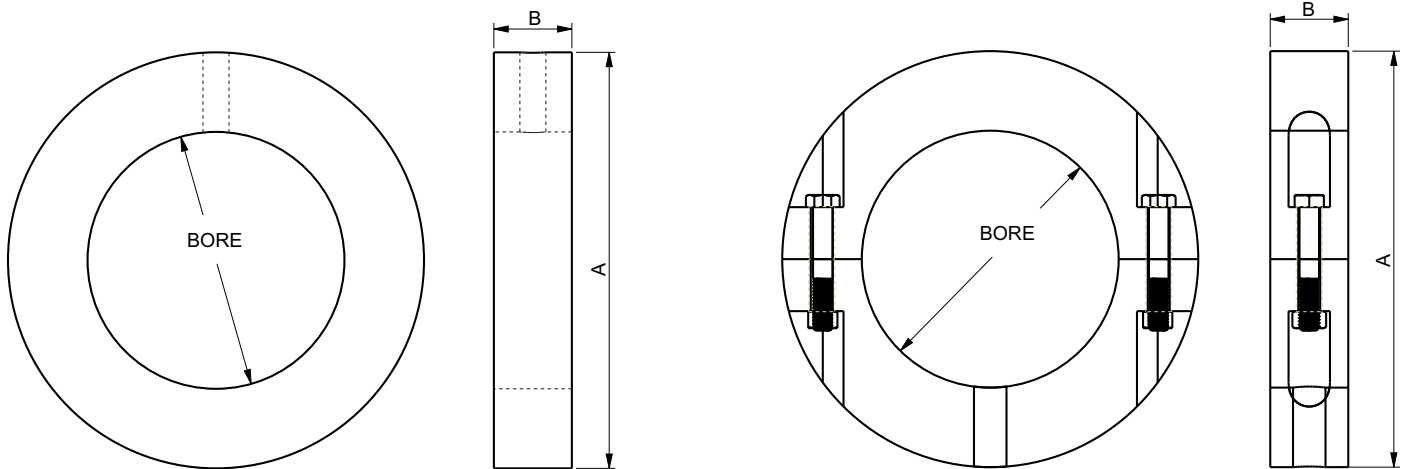
Static shaft bushing clamp tight around the static idler shafts via bolts and set screws. The sprockets rotate about the outer diameter of the sleeve in between the two retaining ridges. The nylon or UHMW-PE sleeve provides a corrosion resistant and smooth bearing surface for the sprockets.



Part No.	Required Sprocket	Max. Shaft Size(In.)	A	B	D
FSCISSNY92SS6343	2-15/16	3.5	7.25	9.25	6
FSCISSNY92SS6393	3-15/16	4	7.25	9.25	6

Set Collar

Set collars are made from a wide variety of materials such as UHMW, nylon, cast iron, stainless steel, or other specified materials. No matter the material, all set collars are supplied with stainless steel hardware. Set collars clamp on the shafting and are secured with setscrews. They prevent the axial motion of sprockets or the shafting itself into the wall bearings.



SOLID

PART NO.	BORE	A	B	SET SCREW	EST. WT.
FSCISCNY14510106	1-7/16	5	1	3/8	0.11
FSCISCNY19510106	1-15/16	5	1	1/2	0.17
FSCISCNY24510106	2-7/16	5	1	5/8	0.39
FSCISCNY29612106	2-15/16	6	1-1/4	3/4	0.45
FSCISCNY34612106	3-7/16	6	1-1/4	3/4	1.0
FSCISCNY39812106	3-15/16	8	1-1/4	3/4	1.25
FSCISCNY44812106	4-7/16	8	1-1/4	3/4	1.36
FSCISCNY49915106	4-15/16	9	1-1/2	3/4	2.18
FSCISCNY54915106	5-7/16	9	1-1/2	3/4	2.35

SPLIT

PART NO.	BORE	A	B	SET SCREW	EST. WT.
FSCISCNY145101S6	1-7/16	5	1	3/8	0.29
FSCISCNY195101S6	1-15/16	5	1	1/2	0.68
FSCISCNY245101S6	2-7/16	5	1	5/8	1.06
FSCISCNY296121S6	2-15/16	6	1-1/4	3/4	1.20
FSCISCNY346121S6	3-7/16	6	1-1/4	3/4	1.67
FSCISCNY398121S6	3-15/16	8	1-1/4	3/4	2.32
FSCISCNY448121S6	4-7/16	8	1-1/4	3/4	3.07
FSCISCNY499151S6	4-15/16	9	1-1/2	3/4	3.31
FSCISCNY549151S6	5-7/16	9	1-1/2	3/4	3.88

CALL : +1-740-387-3335

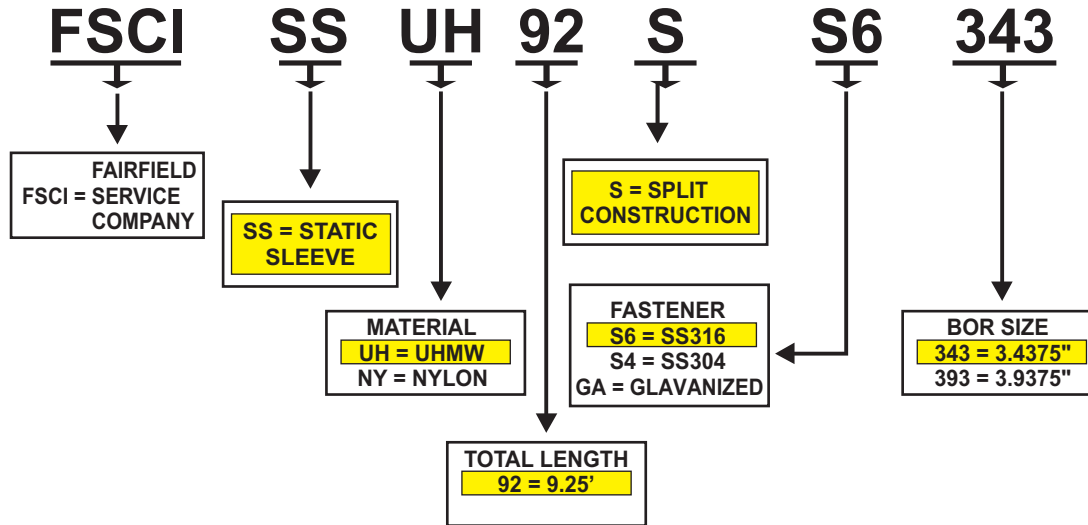
FAX : +1-740-387-4685

www.fairfieldservice.com

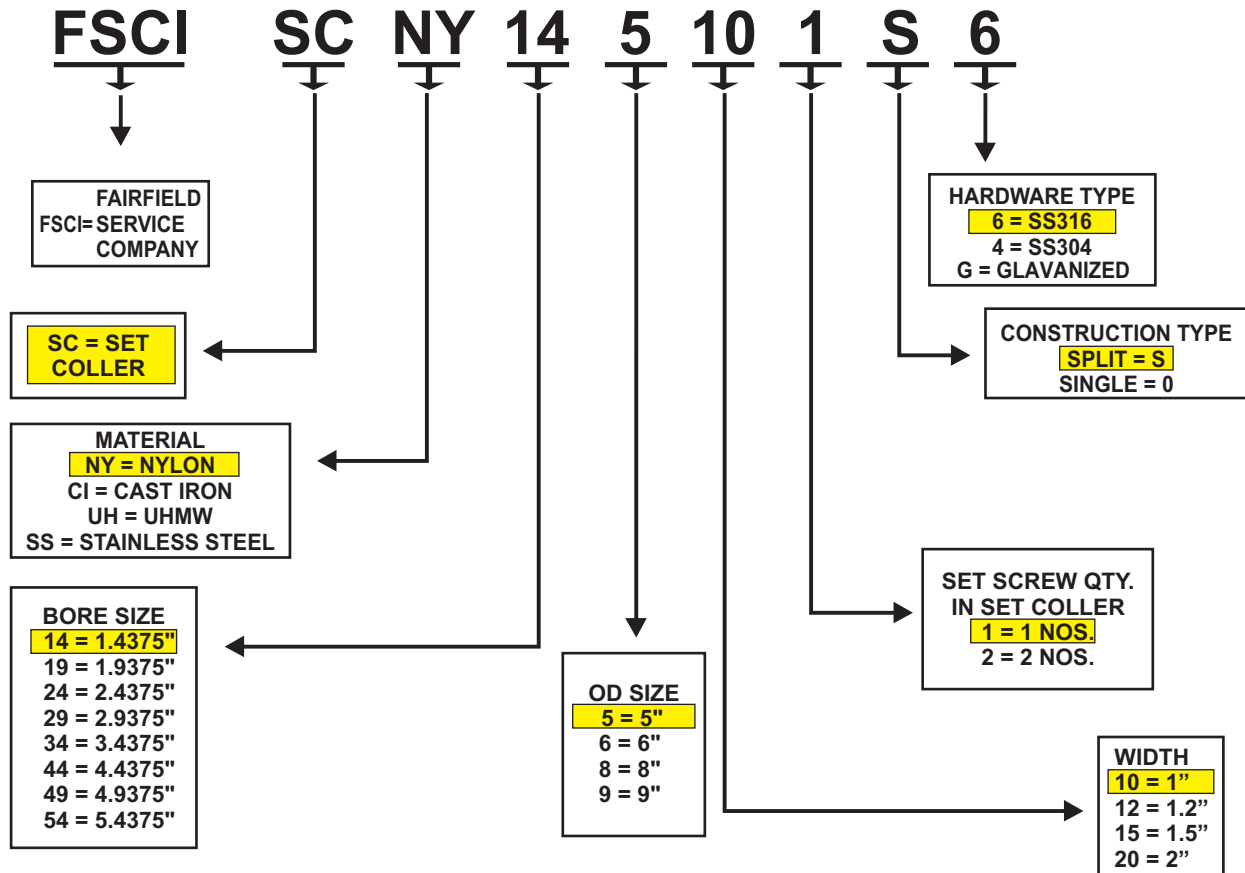


FSCI PART NUMBER SELECTION

FSCI STATIC SLEEVE PART NUMBER SELECTION



FSCI SET COLLER PART NUMBER SELECTION



CALL : +1-740-387-3335

FAX : +1-740-387-4685

www.fairfieldservice.com

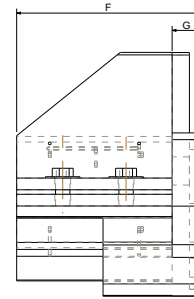
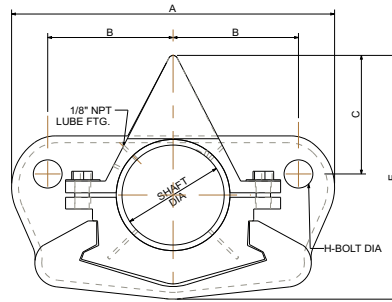
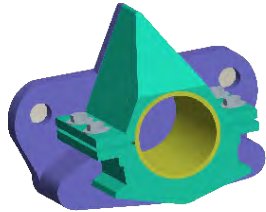


FSCI WALL BEARING

Wall Bearing

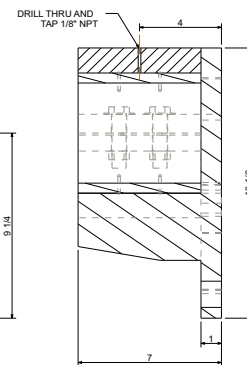
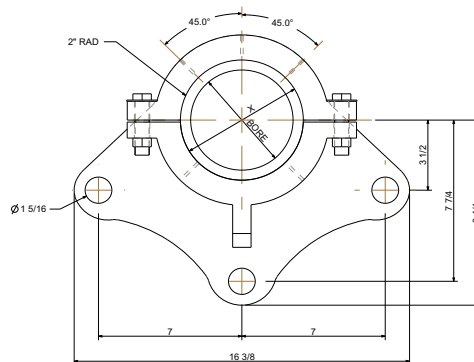
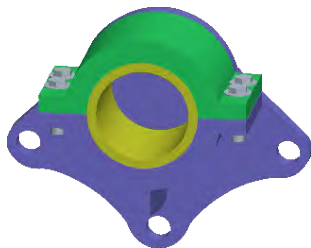
- Babbitted or UHMW lined
- Split designs for ease of replacement
- Bolt patterns designed to match most existing wall anchor locations for retrofit applications
- Static shaftbrackets also available in conjunction with sprocket sleeve bearings

Top Peak Split



Brg.No.	Shaft Dia.	Dimensions (In.)							Wt. Lbs.
		A	B	C	E	F	G	H	
FSCIWBCIUHSOD193	1 15/16	13-1/2	5-1/4	4-1/4	7-13/16	5-1/4	1-1/8	1	49
FSCIWBCIUHSOD243	2 7/16	13-1/2	5-1/4	4-1/4	7-13/16	5-1/4	1-1/8	1	49
FSCIWBCIUHSOD293	2 15/16	13-1/2	5-1/4	4-3/16	7-9/16	5-5/8	1-1/8	1	53
FSCIWBCIUHSOD343	3 7/16	14	5-1/2	4-3/4	8-3/8	6-3/8	1-1/8	1	78
FSCIWBCIUHSOD393	3 15/16	14	5-1/2	6-1/2	11-1/8	7-1/4	1-1/4	1	94
FSCIWBCIUHSOD443	4 7/16	14	5-1/2	6-1/2	11-1/4	8	1-1/4	1	97

Pillow Block Split



Bearing No.	Bore Range		DIMENSIONS		Wt. (lbs)
	Min.	Max.	X	Z	
FSCIPBCIUHSOD193	1 15/16	2 7/16	3	1 1/2	63
FSCIPBCIUHSOD250	2 1/2	2 15/16	3 1/2	1 3/4	73
FSCIPBCIUHSOD300	3	3 7/16	4	2	84
FSCIPBCIUHSOD350	3 1/2	3 15/16	4 1/2	2 1/4	94
FSCIPBCIUHSOD400	4	4 7/16	5	2 1/2	105
FSCIPBCIUHSOD450	4 1/2	4 15/16	5 1/2	2 3/4	115
FSCIPBCIUHSOD500	5	5 7/16	6	3	126

CALL : +1-740-387-3335

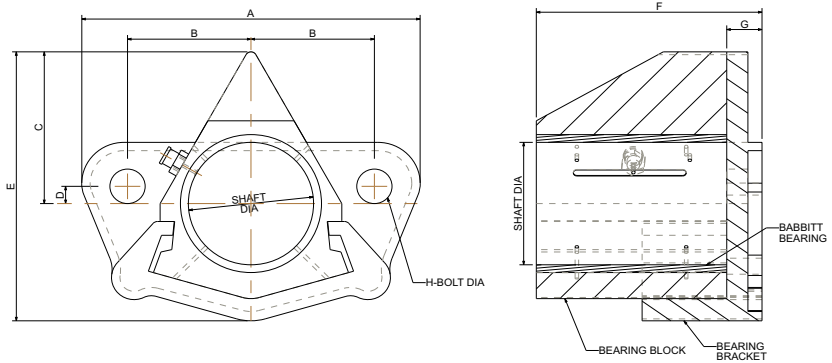
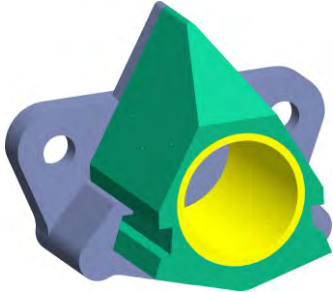
FAX : +1-740-387-4685

www.fairfieldservice.com



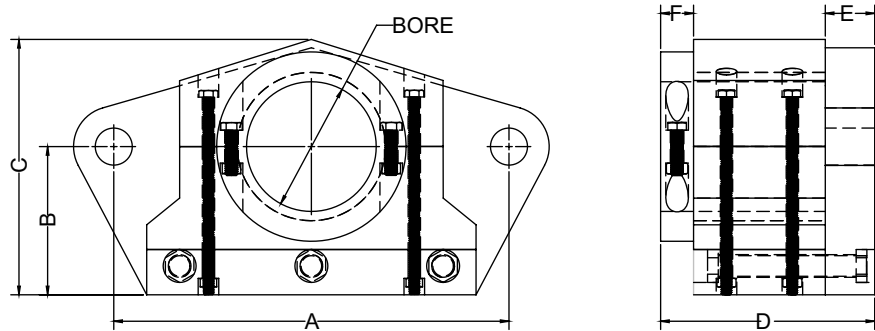
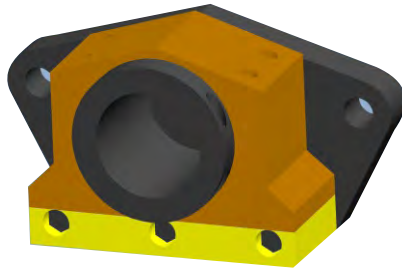
FSCI WALL BEARING

II Triangle Mount



Bearing No.	Shaft Dia. In.	Dimensions (In.)								Wt. (lbs.)
		A	B	C	D	E	F	G	H	
FSCITBCIUH0M0193	1 15/16	7 1/2	2 3/8	3 1/8	1	5 5/8	4 1/2	1	3/4	18
FSCITBCIUH0M0250	2 7/16	8 1/4	2 3/4	3 9/16	3/4	6 5/16	5 1/4	1	3/4	22
FSCITBCIUH0M0300	2 15/16	9 3/4	3 3/8	4 5/16	3/4	7 5/16	5 5/8	1 1/8	7/8	36
FSCITBCIUH0M0350	3 7/16	10	3 1/2	4 13/16	3/4	8 3/8	6 3/8	1 1/8	7/8	40
FSCITBCIUH0M0400	3 15/16	11 1/4	4	5 3/8	3/4	9 5/16	7 1/4	1 1/4	1	54
FSCITBCIUH0M0450	4 7/16	12	4 3/8	5 1/2	5/8	9 3/4	8	1 1/4	1	65
FSCITBCIUH0M0500	4 15/16	13 5/8	5	6 1/2	5/8	11 1/8	8	1 1/4	1	95

II Non Metallic Pillow Block Split



Material: UHMW or Poly Urethane

Bearing No.	Bore Range		DIMENSIONS					
	Min.	Max.	A	B	C	D	E	F
FSCIPBNUHS0D193	1 15/16	2 7/16	12	4.5	7.75	6.5	1.5	1
FSCIPBNUHS0D243	2 1/2	2 15/16	12	4.5	7.75	6.5	1.5	1
FSCIPBNUHS0D293	3	3 7/16	12	4.5	7.75	6.5	1.5	1
FSCIPBNUHS0D343	3 1/2	3 15/16	12	4.5	7.75	6.5	1.5	1

CALL : +1-740-387-3335

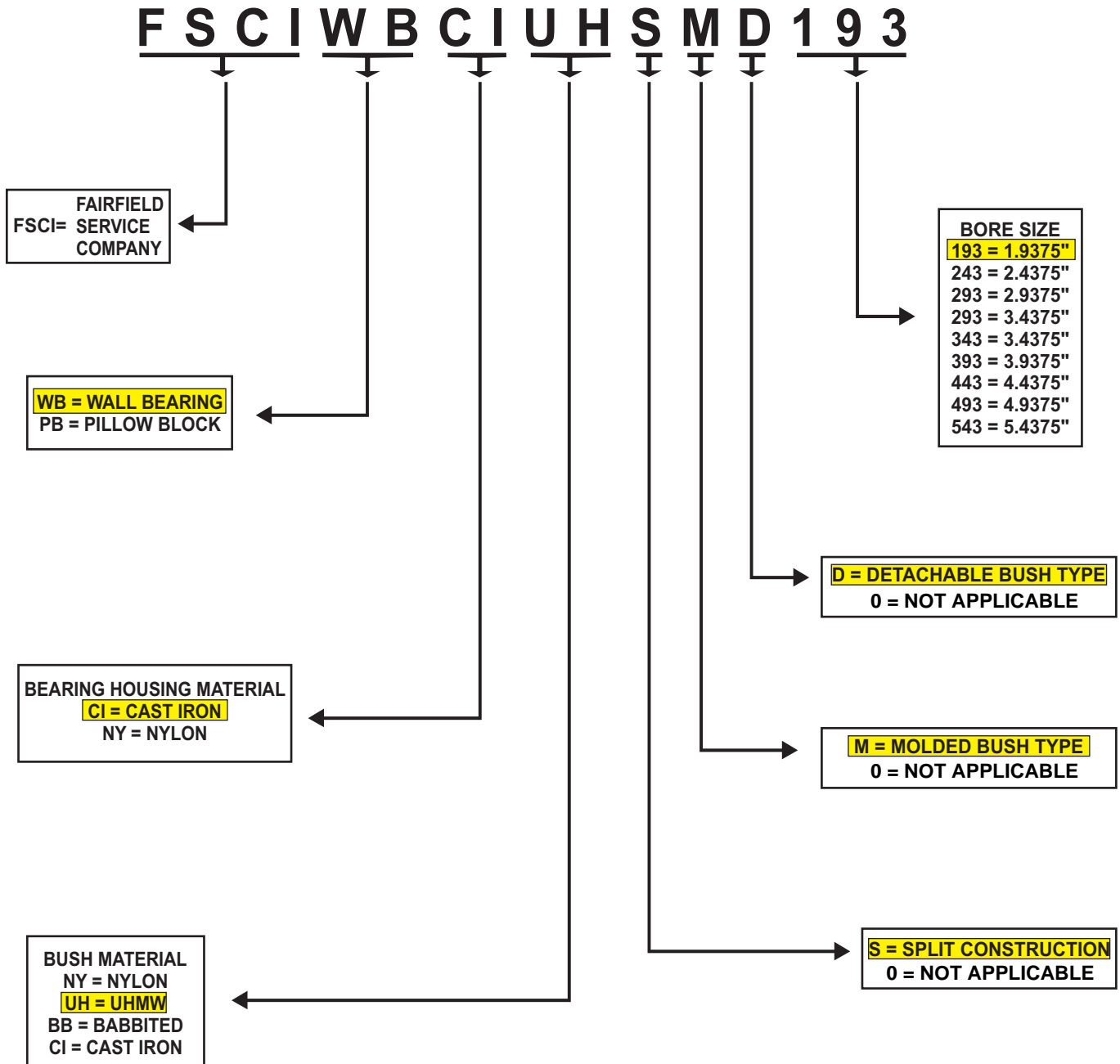
FAX : +1-740-387-4685

www.fairfieldservice.com



FSCI BEARING PART NUMBER SELECTION

FSCI BEARING PART NUMBER SELECTION



CALL : +1-740-387-3335

FAX : +1-740-387-4685

www.fairfieldservice.com

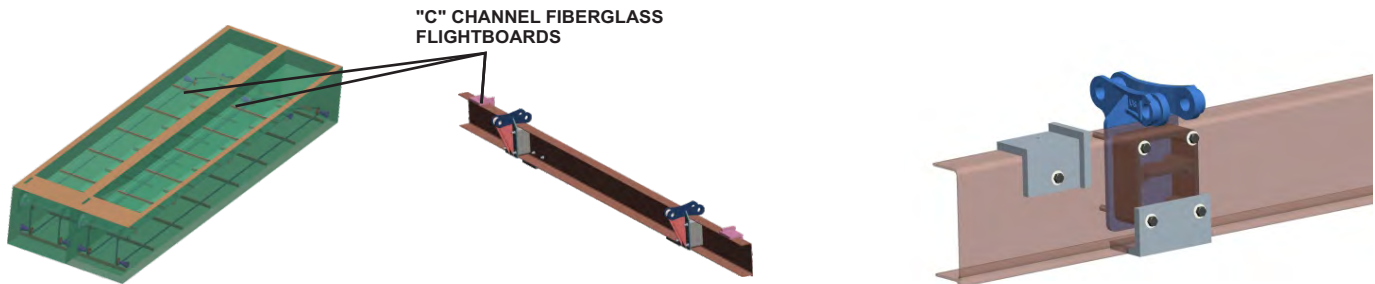


FSCI FLIGHT COMPONENTS

II FIBER GLASS FLIGHT :-

High strength fiberglass, Ultra high-strength aluminum, Laminate it o replace existing redwood also available, Stainless steel hardware, 6 or 8 inch, available for standard F26 or F28 attachments.

"C" CHANNEL FIBERGLASS FLIGHTBOARDS



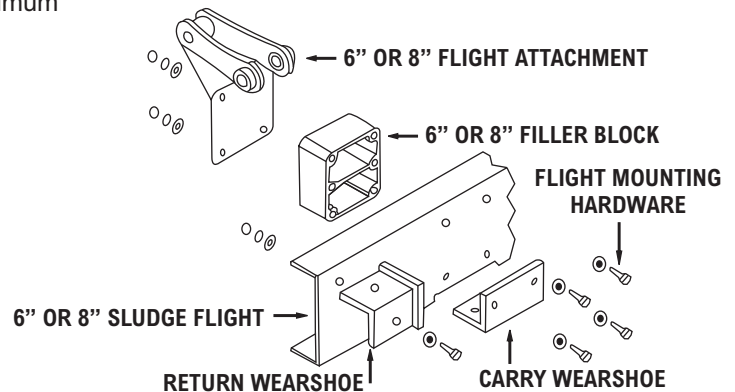
Fiberglass Flights:

The majority of flights are a "C" channel (6" & 8") model made from a minimum of 55% FIBERGLASS by content & maximum water ABSORPTION 0.6%.

APPLICATION: For use in primary clarifiers, secondary clarifiers, and cross collectors.

SIZES: Standard 6" and 8"

MATERIAL: Fiberglass reinforced isophthalic polyester resin (55% minimum glass content)



WEIGHT:

- ▶ 6" = 1.21 lbs./ft.
- ▶ 8" = 1.39 lbs./ft.

Also available;

- ▶ 316 Stainless Steel Flight mounting Hardware Sets
- ▶ 6" and 8" Filler Blocks
- ▶ Carry and Return Wearshoes

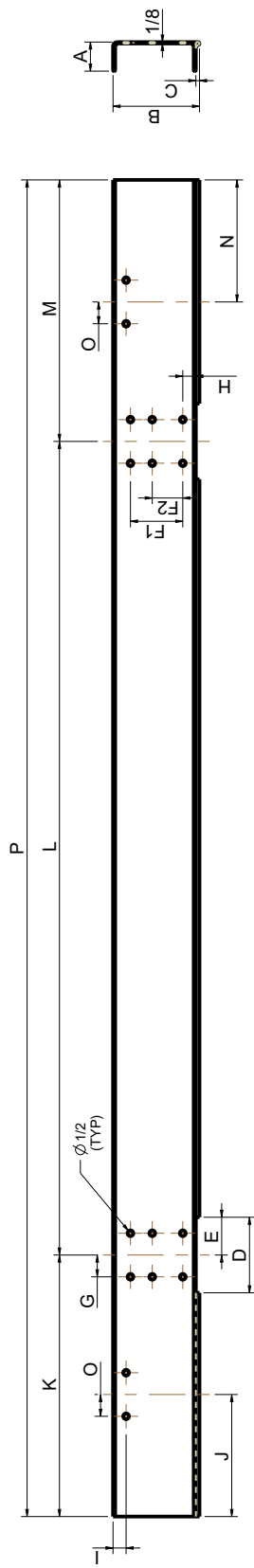
BENEFITS: Direct replacement for Wood flights, works with Plastic and Metallic Chains

Description	Standard Flight	
	6 Inch nominal	8 Inch nominal
Flight Specific Gravity	1.61 - 1.75	1.61 - 1.75
Flight Density (lbs./cubic inches)	0.058 - 0.062	0.058 - 0.062
Flight Min. Modulus of Elasticity (y-y axis) (psi)	4.8 x 10 ⁶	4.8 x 10 ⁶
Flight Moment of Inertia x-x (inches ⁴)	7.813	15.589
Flight Moment of Inertia y-y (inches ⁴)	1.02	1.114

CALL : +1-740-387-3335

FAX : +1-740-387-4685

www.fairfieldservice.com



PART #	QTY	A	B	C	D	E	F1	F2	G	H	I	J	K	L	M	N	O	P
FRP FLIGHT				0.313	6	3	4.5	2.625	1.875									1.875

NOTE :

- FLIGHTS SHALL HAVE A MINIMUM OF 55 % FIBERGLASS BY CONTENT AND MAXIMUM WATER ABSORPTION 0.6%.
- TENSILE STRENGTH SHALL BE 35,000 PSI LONGITUDINAL AND 7,000 PSI TRANSVERSE.
- SHEAR STRENGTH SHALL BE A MINIMUM OF 14,000 PSI.
- MODULUS OF ELASTICITY SHALL BE A MINIMUM OF 4.8 X 10⁶ PSI IN THE Y-Y AXIS.
- CONTRACTOR SHALL VERIFY ALL DIMENSION, CONDITIONS, AND QUANTITIES IN THE FIELD.
- FLIGHTS SHALL BE C-CHANNEL FULL SIZE AND BE SPECIFICALLY DESIGNED FOR SLUDGE COLLECTOR SERVICE AND CONSTRUCTED OF FIBERGLASS REINFORCED WITH POLYESTER RESIN.
- FLIGHTS SHALL HAVE CONTINUOUS FIBERGLASS FILAMENTS IN ADDITION TO A FIBERGLASS MAT RUNNING THE FULL LENGTH OF THE FLIGHT MEMBER.

CUSTOMER APPROVAL

APPROVED : []

APPROVED AS NOTED : []

NOT APPROVED
RESUBMIT FOR APPROVAL : []

CUSTOMER : _____

APPROVED BY : _____

DATE : _____

IMPLIED TOLERANCES

FRACTIONAL DIMENSION: $\frac{1}{16}$

FOR SHEARING, FLAME CUTTING, BENDING & WELDMENTS AFTER WELDING

MACHINING \pm

X \pm .06 XXX \pm .002

XX \pm .016 XXXX \pm .0005

ANGLES \pm .5°

TITLE: FRP FLIGHT BOARD
TEMPLATE MEASUREMENT

SCALE: _____
DATE: _____

DRAW: NO. _____

MICHIGAN CITY, INDIANA

PROJECT: _____
CHECKED: _____
DRAWN: _____
M.P.:

FAIRFIELD SERVICE COMPANY

NO	DESCRIPTION	REV BY	DATE	APPD	NO	DESCRIPTION	REV BY	DATE	APPD
	REVISION								

CALL : +1-740-387-3335

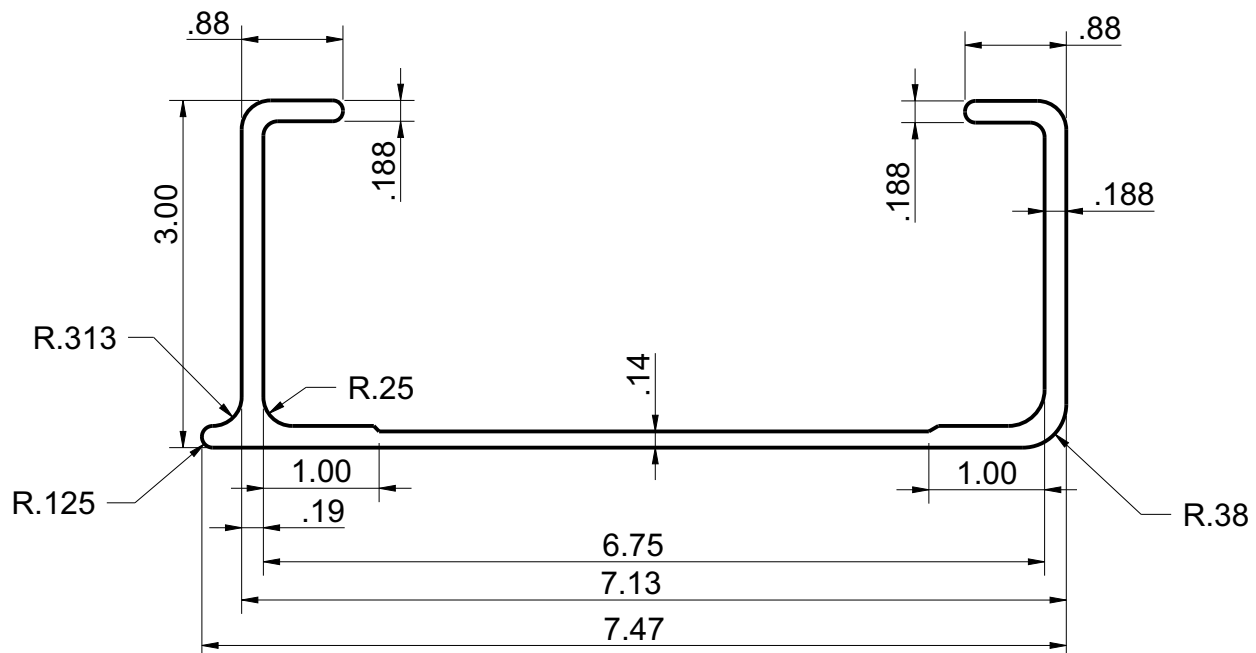
FAX : +1-740-387-4685

www.fairfieldservice.com



FSCI ULTRA FRP FLIGHT

As an upgrade to the c-channel profile, the Ultra Flight was designed to handle wider tank spans (up to 28 feet) commonly found in Europe. With full 3-inch legs and vertical ribs parallel to the front face, the Ultra Flight profile is stiffer and stronger than the standard c-channel flight and is capable of handling higher sludge loadings. The Ultra Plus Flight was designed to extend the Ultra Series and to accommodate tank widths up to 31 feet. Its thicker profile allows the scraper to span wider tanks and push heavier sludge blankets than the Ultra Flight.



Flat-face flight design eliminates the potential for recirculation of solids.
Fabricated from UV-inhibited isophthalic polyester resin.
Pultruded profiles resist wicking and do not require resin sealing.
Designed with fiberglass roving and mat running the full length of the flight.
Equipped with an integral scraping lip for superior tank scraping.
Optimized resin and glass content ratio maximizes stiffness and durability.
Sized to allow for structural variations in tank walls.
Can be pre-drilled and notched per customer requirements to account for floor and return rail location.

CALL : +1-740-387-3335

FAX : +1-740-387-4685

www.fairfieldservice.com



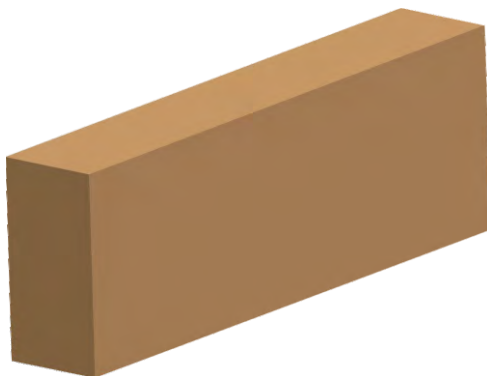
FSCI FLIGHT COMPONENTS

|| LAMINATED WOOD FLIGHTS :-

Laminated wood flights come in a standard rectangular shape. The wood that is used for the flights is Douglas fir and processed between 12-15% moisture. Laminated flights are normally used for heavy flow applications.

Side hardness (lbs)	710
Modulus of rupture (psi)	4.99×10^3
Modulus of elasticity (psi)	1.76×10^6
Specific gravity	0.48
Density (Lbs./cubic inched)	0.018495
8" Moment of inertia X-X (inches ⁴)	87.8906
6" Moment of inertia X-X (inches ⁴)	36
8" Moment of inertia Y-Y (inches ⁴)	9.7656
6" Moment of inertia Y-Y (inches ⁴)	4

LAMINATED WOOD FLIGHT BOARD



APPLICATION:

► For use in primary clarifiers, secondary clarifiers, and cross collectors.

SIZES:

► 2 1/2" X 6" = Standard 6"

► 2 1/2" X 7 1/2" = Standard 8"

MATERIAL:

► Laminated Wood — Douglas Fir Kiln dried to 12% to 15% moisture content with gradient not to exceed 5%.

BENEFITS:

I Decay hazard in wastewater applications much less than other wood flight alternatives. Long life in very harsh environments.

CALL : +1-740-387-3335

FAX : +1-740-387-4685

www.fairfieldservice.com



FSCI FSREBAR LUMBER

NON METALLIC
REINFORCING BAR



TECHNICAL DATA

FAIRFIELD "FSREBAR LUMBER" Plastic material properties

Test Methods	English units	material units			
Test	ASTM Test	Value	Unite	Value	Unite
Compression Modulus	D695	170.000	PSI		
Compression Strength	D695	4500	PSI		
Chemical Resistance Salt water	ASTM D543	05	by weight		
	ASTM D543/D638	3736	PSI - Tensile Dey snar.		
Chemical Resistance Gasoline	ASTM D543	29	% by Weight		
	ASTM D543/D638	3431	PSI- Tensile - 7 Day soak		
Chemical Resistance of Diesel	ASTM D643	098	% by Weight		
	ASTM D543 D638	3596	PSI - Tensile - 7 Day soak		
Hardness	D4329	67	Shore D		
Specific Gravity	D6111-97	0.93	g/cc	093	g/cc
Flesi point		044	Deg F	340	DegC
Water Absorption	D570	025	% by Weight - 24 hour		
Thermal Expansion	D6341-98	000003 5	Inch/Inch Deg F		
Average Screw Pull Out	D6117	646	Lbs.	293	KG.
Flame Spread	E84 (03al)	62			
Flame Spread Classification	E84 (03a)	60			
Smoke Developed	E84 (03a)	230			
Smoke Developed Classification	E84 (03a)	250			
Spontaneous ignition	D-1929	824	Deg F	440	DegC
Tenslie test	D638	3623	PSI	254	Kg/cm ²
Note hed impact resistance Method A	D256	277	FiLB IN		
Brattiness - Base materials	D746	<-40 Deg. C			
Abrasion resistance	D4060	<0.023	Grams(0.043%)		
Hairiness	D4329	66	Shore D		
Ultraviolet :	D4329	<10	% Change in Type D Durointer at 50% hours		
Coefficient of Friction - Static	D1849	0.253			
Coefficient of Friction - Kinetic	D1849	0.173			
Fortnaldehyde gassing	D6007	0.02	ppm		

The technical data on page represents only average values and not minimum values safety factors must be added into the design

Ultraviolet Weathering

An ultraviolet stabilizer is added at the time of manufacture to help protect against ultraviolet degradation of the plastic surface in exterior application

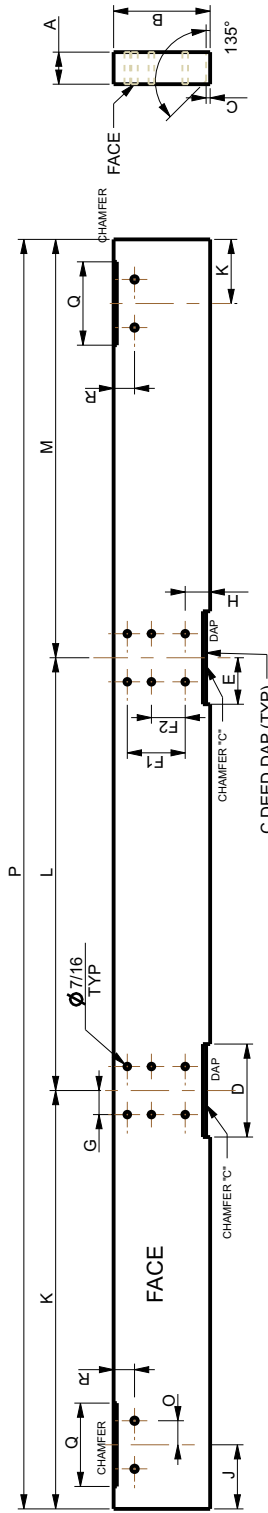
CALL : +1-740-387-3335

FAX : +1-740-387-4685

www.fairfieldservice.com

CALL : +1-740-387-3335

FAX : +1-740-387-4685



PART #	QTY	A	B	C	D	E	F1	F2	G	H	I	J	K	L	M	N	O	P	Q	R
LAMINATED FLIGHT				0.313	6	3	4.5	2.625	1.875									1.875		

NOTE:
 (1) THE FLIGHTS SHALL BE MADE OF WEST COAST DOUGLAS FIR; KILN DRIED TO 12% TO 15 MOISTURE CONTENT WITH A GRADIENT NOT EXCEEDING 5%. LAMINATING SHALL BE IN ACCORDANCE WITH AMERICAN NATIONAL STANDARD (ANS II AITC-A190) 1983. CAMBER LAMINATION SHALL BE RESORCINOL RESIN.
 (2) CONTRACTOR SHALL VERIFY ALL DIMENSIONS, CONDITIONS AND QUANTITIES IN THE FIELD.
 (3) FLIGHT SHALL BE CUT, DRILLED, NOTCHED AND CHAMFERED FOR INSTALLATION ON EXISTING SYSTEMS.
 (4) LAMINATED WOOD FLIGHTS SHALL BE CONSTRUCTED IN A MANNER SUCH THAT THE INDIVIDUAL LAYERS ARE ORIENTATED SO THAT EACH INDIVIDUAL LAYER SHALL RUN THE WHOLE OF THE FLIGHT.
 (5) ONE (1) FLIGHT OF EACH PRODUCTION BATCH SHALL BE PACKED SEPARATELY AND MADE AVAILABLE FOR INSPECTION AFTER DELIVERY.

CUSTOMER APPROVAL

APPROVED :

APPROVED AS NOTED :

NOT APPROVED RESUBMIT FOR APPROVAL :

CUSTOMER : _____

APPROVED BY : _____

DATE : _____

IMPLIED TOLERANCES FINANCIAL DIMENSION FOR SHEARING FLAME CUTTING, BENDING & WELDMENTS AFTER WELDING ANGLES : 0.1 MACHINING : X = 0.005 XXX = 0.002 XX = 0.018 XXXX = 0.0085 ANGLES : 0.1		TITLE LAMINATED WOODEN & REBAR FLIGHT TEMPLATE MEASUREMENT	
THIS DRAWING AND ALL DESIGN DETAILS ONLY ARE THE PROPERTY OF THE FAIRFIELD SERVICE CO. OF IND. LLC AND ARE CONFIDENTIAL. THE DRAWING IS NOT TO BE COPIED WITHOUT THE WRITTEN PERMISSION OF FAIRFIELD SERVICE CO. ALL PATENT AND DESIGN RIGHTS ARE RESERVED.		DRAW: NO. MICHIGAN CITY, INDIANA	
PROJECT CHECKED DRAWN M.P.		SCALE: DATE:	
REVISION NO. DESCRIPTION REV. BY DATE APPD.		REV.	
REVISION NO. DESCRIPTION REV. BY DATE APPD.		FAIRFIELD FAIRFIELD SERVICE COMPANY	



FSCI FLIGHT COMPONENTS

ALUMINUM FLIGHT BOARDS

APPLICATION:

- ▶ For use in primary clarifiers, secondary clarifiers, and cross collectors.

SIZES:

- ▶ 2 1/2" X 7" for use with 8" flight attachments.
- ▶ 2 1/2" X 5 1/2" for use with 6" flight attachments.
Can be supplied in custom cut lengths up to 32 Feet long.

MATERIAL:

- ▶ 6060-T6 Aluminum

WEIGHT:

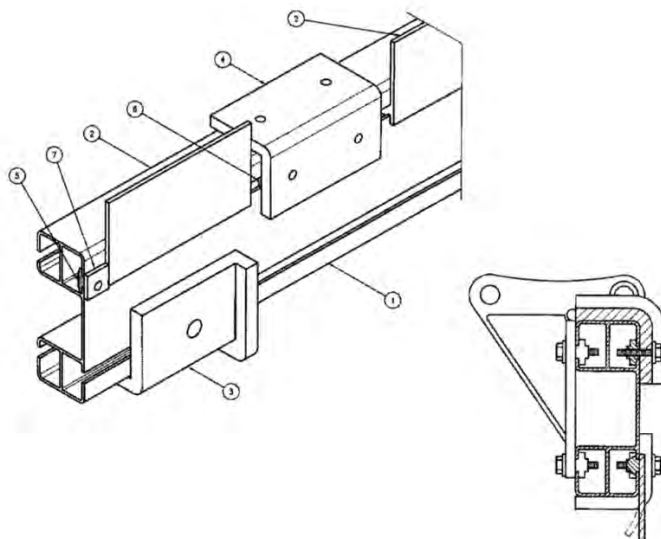
- ▶ 2.41 lbs./ft.

SUPPLIED WITH:

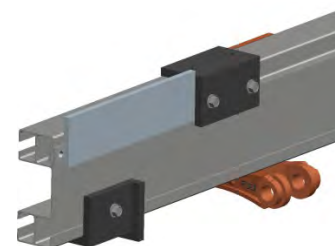
- ▶ Carry and return wearshoes made of UHMW.
- ▶ Hardware which includes aluminum extruded nuts and stainless steel bolts and washers for attaching wearshoes and flight attachments.
- ▶ Rubber scraper assembly complete with retainer plate, stainless steel bolts and washers, and extruded nuts.

BENEFITS:

- ▶ Lightweight for easy installation, No need for filler blocks, No notching or drilling required,
- ▶ Can be completely assembled in advance with minor field adjustments, Can be repaired and welded on-site or in a shop.
- ▶ Can be RECYCLED for salvage value after use.



ITEM	QTY	DESCRIPTION
1	1	FLIGHT
2	1	RUBBER SCRAPER
3	2	GUIDE/RETURN SHOE
4	2	CARRYING/WEAR SHOE
5	4	SINGLE NUT
6	6	DOUBLE NUT
7	1	WIPER RETAINER



CALL : +1-740-387-3335

FAX : +1-740-387-4685

www.fairfieldservice.com

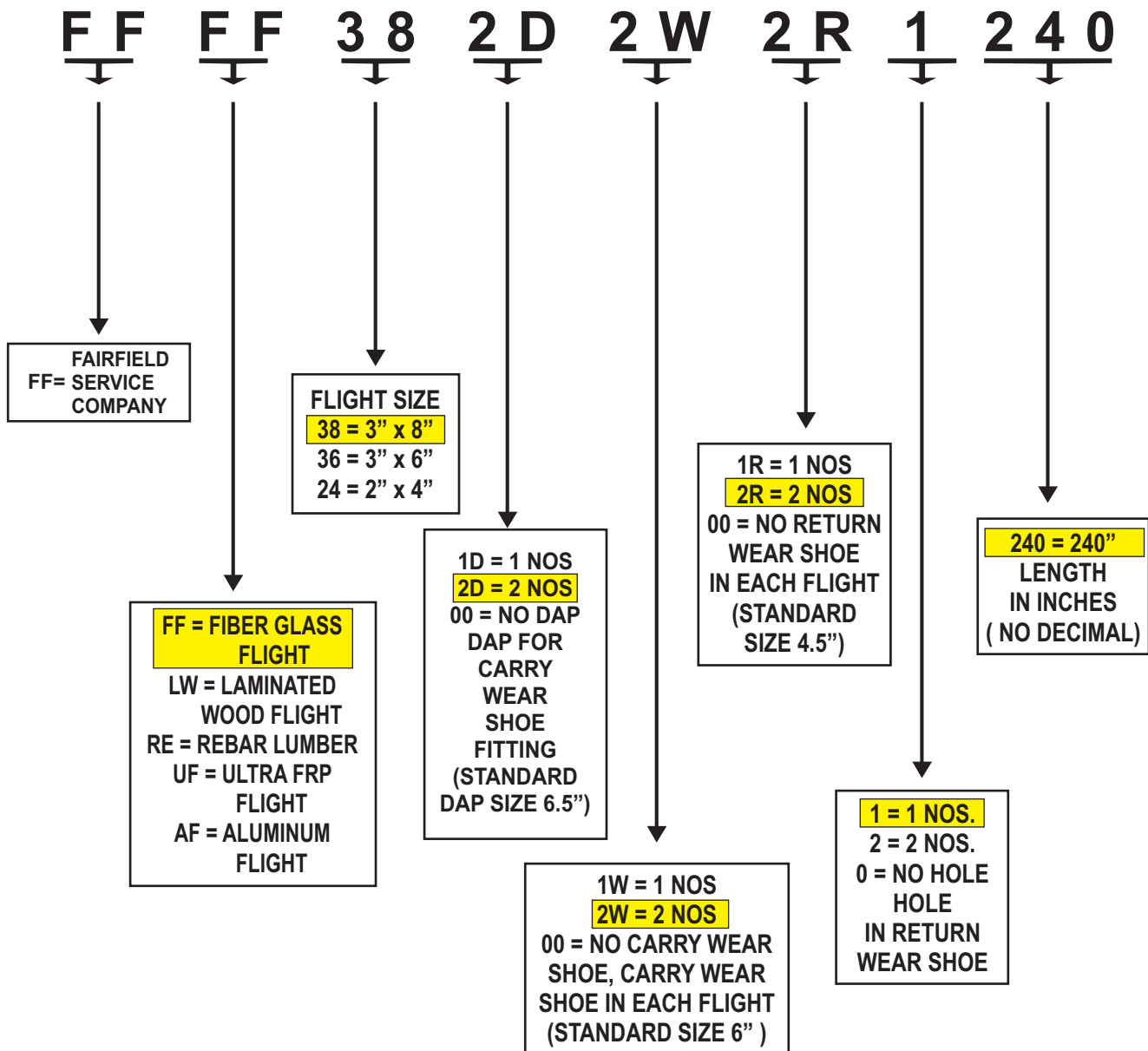


FSCI FLIGHT CODING SYSTEM

EXAMPLE FOR FLIGHT PART NUMBER

FFFF382D2W2R1240 = 3"X8" - 20' FLIGHT LENGTH WITH 2 NOS DAP,
2 NOS CARRY WEAR SHOE, 2 NOS RETURN WEAR SHOE

FFFF382D2W000240 = 3"X8" - 20' FLIGHT LENGTH WITH 2 NOS DAP,
2 NOS CARRY WEAR SHOE, NO RETURN WEAR SHOE



CALL : +1-740-387-3335

FAX : +1-740-387-4685

www.fairfieldservice.com



FSCI FLIGHT COMPONENTS

FILLER BLOCK

APPLICATION:

► For use with "C" channel shape flight boards,

SIZES:

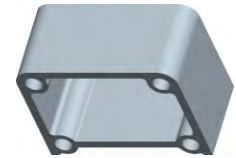
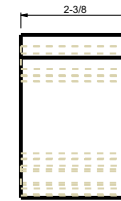
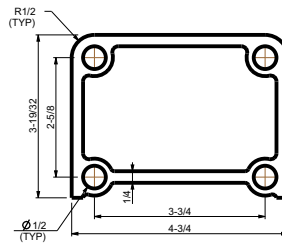
► Standard 6" and 8" flights

MATERIAL:

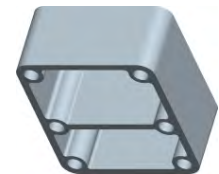
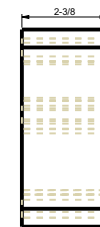
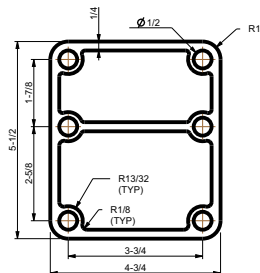
► Material is polypropylene

BENEFITS:

► Lightweight yet durable, FSCI filler blocks are compatible with all industry standard channel flights.



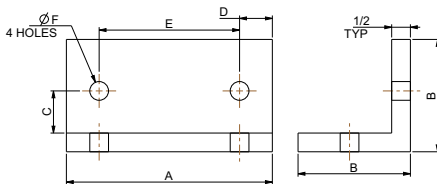
FSCIFBPO364H2637



FSCIFBPO386H4537

II FSCI WEAR SHOES

Carrying Wearshoe



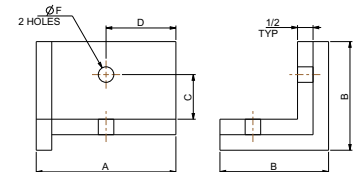
Material: UHMW, NYLON

Part No.	A	B	C	D	E	F
FSCICWSNY553350A	5-1/2	3	1-5/16	7/8	3-3/4	1/2
FSCICWSNY553350A	5-1/2	3	1-1/8, 1-7/8	7/8	3-3/4	1/2
FSCICWSNY603350A	6	3	1-1/8, 1-7/8	1-1/8	3-3/4	1/2

II Single Hole Return Wearshoe

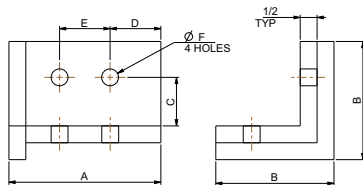
Material: UHMW, NYLON

Part No.	A	B	C	D	E	F
FSCIRWSNY403550B	4	3-1/2	1-5/16	2	-	1/2
FSCIRWSNY453550B	4-1/2	3-1/2	1-3/8	2	-	1/2
FSCIRWSNY603550B	6	3-1/2	1-3/8	2-1/4	-	1/2



II Double Hole Return Wearshoe

Material: UHMW, NYLON



Part No.	A	B	C	D	E	F
FSCIRWSNY403550A	4	3-1/2	1-3/8	7/8	2	1/2
FSCIRWSNY453550A	4-1/2	3-1/2	1-3/8	7/8	1	1/2
FSCIRWSNY603550A	6	3-1/2	1-3/8	1-1/8	3-3/4	1/2

APPLICATION:

► FSCI UHMW-PE Wear Shoes are designed for use in our standard, state of the art FSCI rectangular system and standard wear shoe applications.

MATERIAL:

► This material has been shown to be superior to all other typical wear shoe materials (based on ASTM G-65). are also available in different materials; Polyurethane, Cast Nylon, Polypro.

CALL : +1-740-387-3335

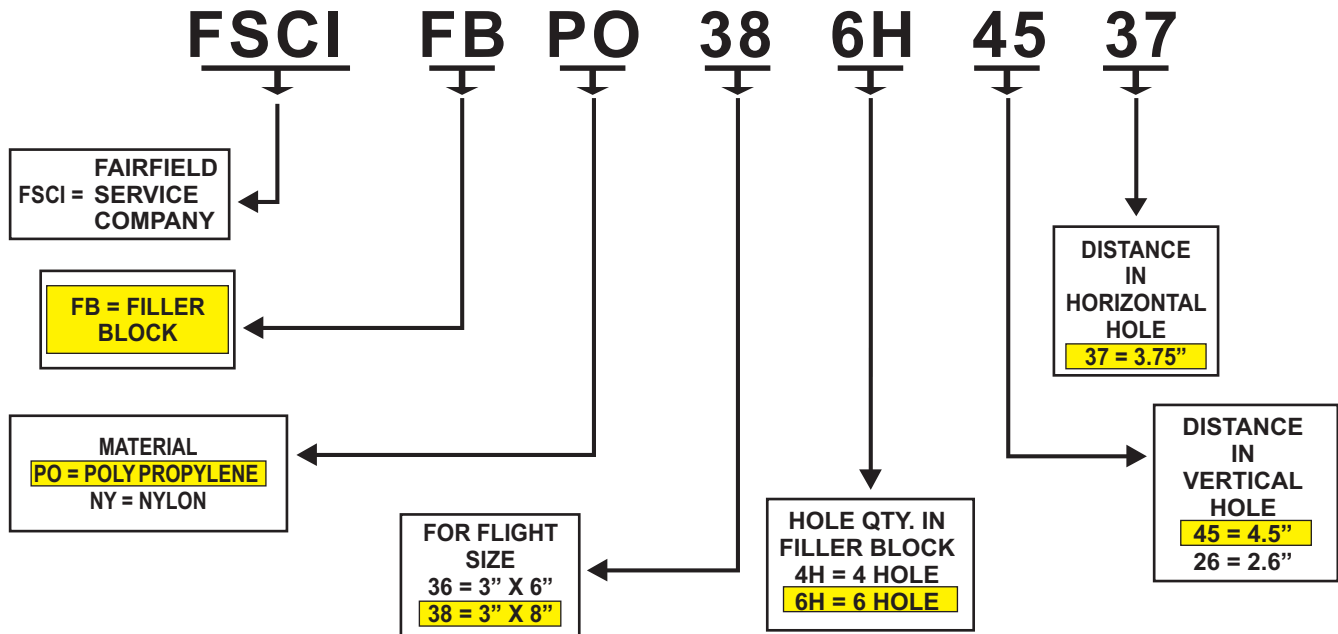
FAX : +1-740-387-4685

www.fairfieldservice.com

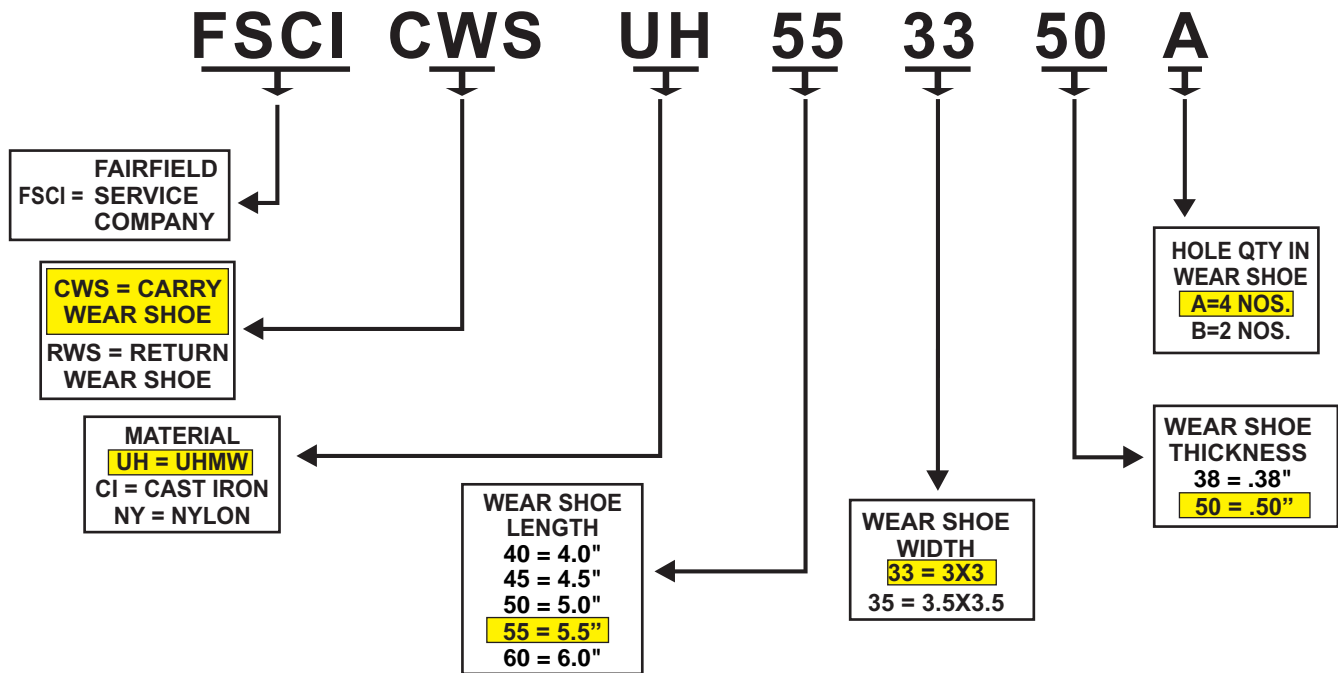


FSCI FILLER BLOCK & WEAR SHOE PART NUMBER SELECTION

FSCI FILLER BLOCK PART NUMBER SELECTION



FSCI WEAR SHOE PART NUMBER SELECTION



CALL : +1-740-387-3335

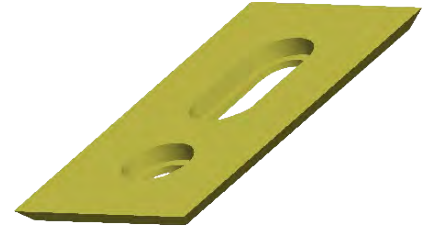
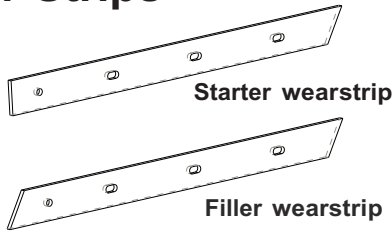
FAX : +1-740-387-4685

www.fairfieldservice.com



WEAR STRIP & RETURN RAIL SUPPORT

Wear Strips



Filler wearstrip

Material: UHMW (Black color)

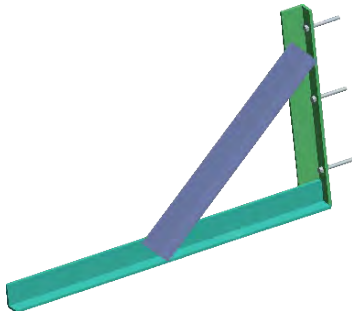
Part No.	Thk.	Width	Length	Center Line
FSCIFWUH3726H120	3/8	2-5/8	120	1-5/16
FSCIFWUH3730H120	3/8	3	120	1-1/2
FSCIFWUH5025H120	1/2	2-1/2	120	1-1/4
FSCIFWUH5030H120	1/2	3	120	1-1/2
FSCIFWUH5035H120	1/2	3-1/2	120	1-3/4
FSCIFWUH5040H120	1/2	4	120	2
FSCIFWUH5050H120	1/2	5	120	2-1/2
FSCIFWUH6225H120	5/8	2-1/2	120	1-1/4
FSCIFWUH6230H120	5/8	3	120	1-1/2
FSCIFWUH6240H120	5/8	4	120	2
FSCIFWUH6250H120	5/8	5	120	2-1/2

Starter wearstrip

Material: UHMW (Black color)

Part No.	Thk.	Width	Length	Center Line
FSCISWUH3726H120	3/8	2-5/8	120	1-5/16
FSCISWUH3730H120	3/8	3	120	1-1/2
FSCISWUH5025H120	1/2	2-1/2	120	1-1/4
FSCISWUH5030H120	1/2	3	120	1-1/2
FSCISWUH5035H120	1/2	3-1/2	120	1-3/4
FSCISWUH5040H120	1/2	4	120	2
FSCISWUH5050H120	1/2	5	120	2-1/2
FSCISWUH6225H120	5/8	2-1/2	120	1-1/4
FSCISWUH6230H120	5/8	3	120	1-1/2
FSCISWUH6240H120	5/8	4	120	2
FSCISWUH6250H120	5/8	5	120	2-1/2

Return Rail Supports



ANGLE TYPE

APPLICATION:

- ▶ To Support the Return Rail

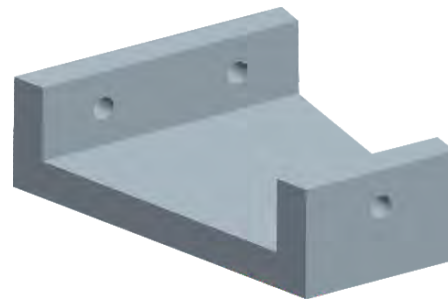
SIZES:

- ▶ 2" X 3" X 3/8" angle

MATERIAL:

- ▶ 316L Stainless steel

Anchored to the channel wall



WEDGE TYPE

APPLICATION:

- ▶ To Support the Return Rail

MATERIAL:

- ▶ UHMW

Anchored to the channel wall

CALL : +1-740-387-3335

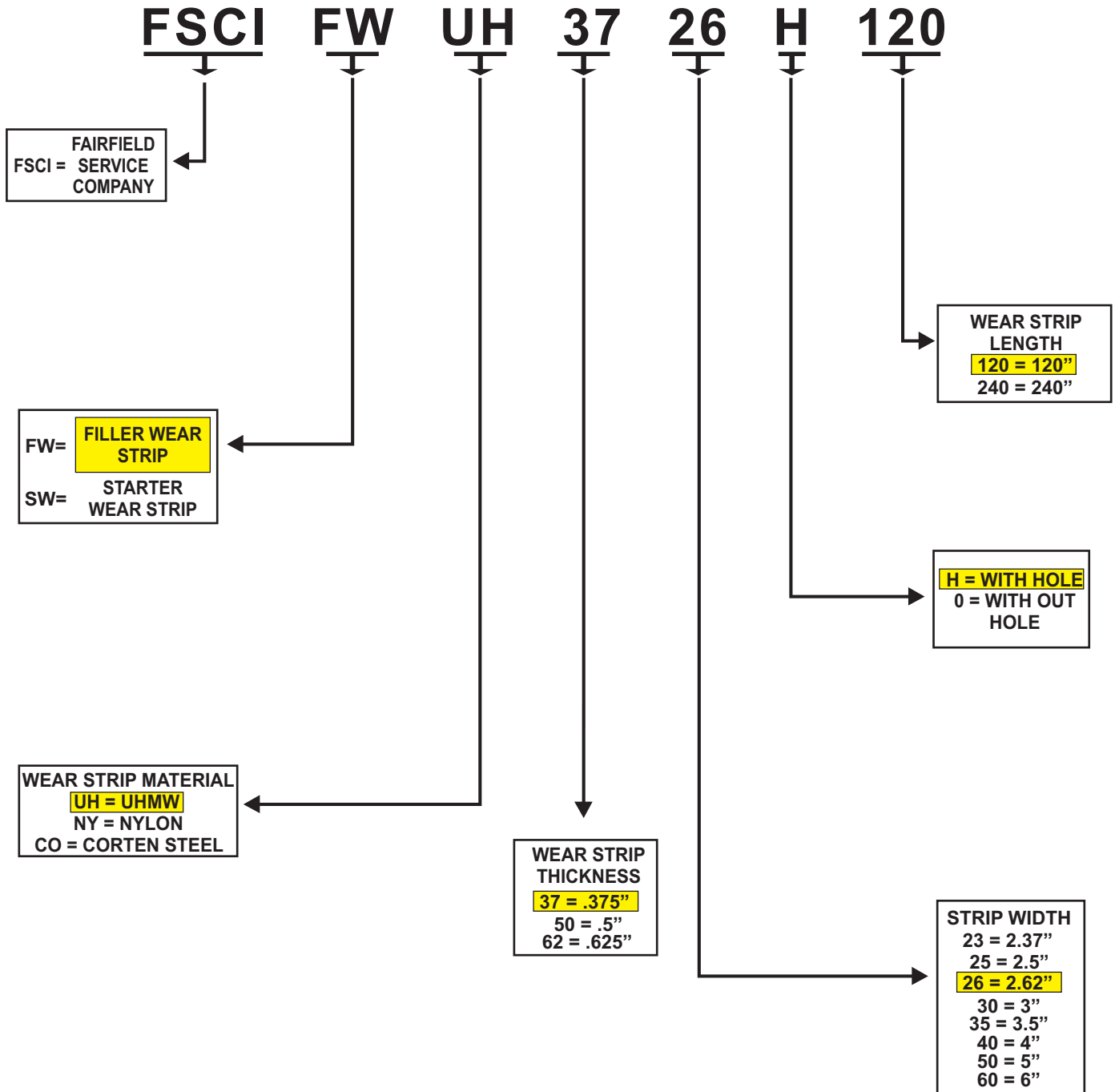
FAX : +1-740-387-4685

www.fairfieldservice.com



FSCI WEAR STRIP PART NUMBER SELECTION

FSCI WEAR STRIP PART NUMBER SELECTION



CALL : +1-740-387-3335

FAX : +1-740-387-4685

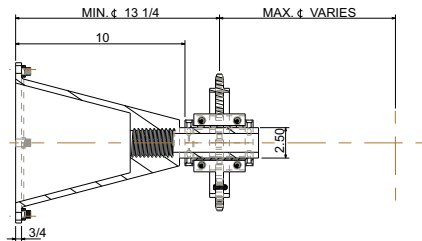
www.fairfieldservice.com



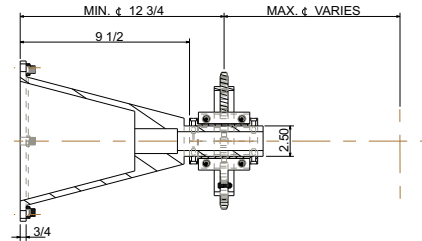
FSCI STUB SHAFT

STUB SHAFT (AVAILABLE IN METALLIC & NON METALLIC)

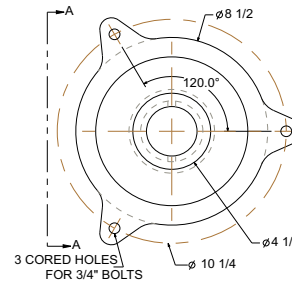
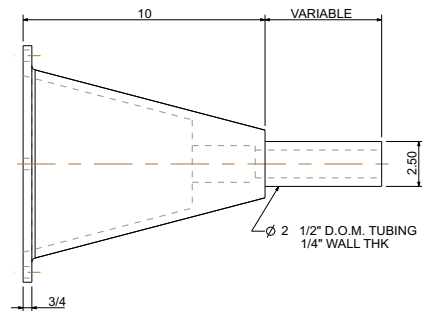
II SHORT STUB SHAFT



SHORT STUB SHAFT, THREADED

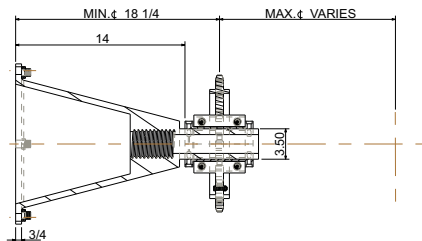


SHORT STUB SHAFT, PRESSED

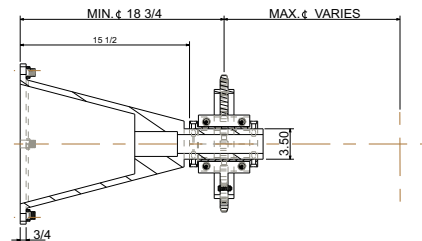


CASTING ARE THE SAME FOR BOTH THREADED & PRESSED SHAFTS AND ARE 65-56-12 DUCTILE IRON.

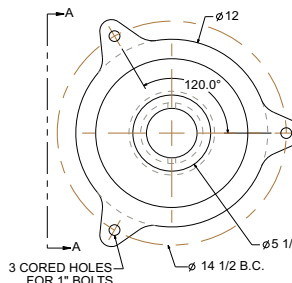
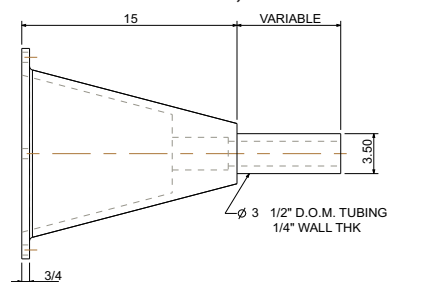
II LONG STUB SHAFT



LONG STUB SHAFT, THREADED



LONG STUB SHAFT, PRESSED



CASTING ARE THE SAME FOR BOTH THREADED & PRESSED SHAFTS AND ARE 65-45-12 DUCTILE IRON. CASTING AVAILABLE IN NON METALLIC .

CALL : +1-740-387-3335

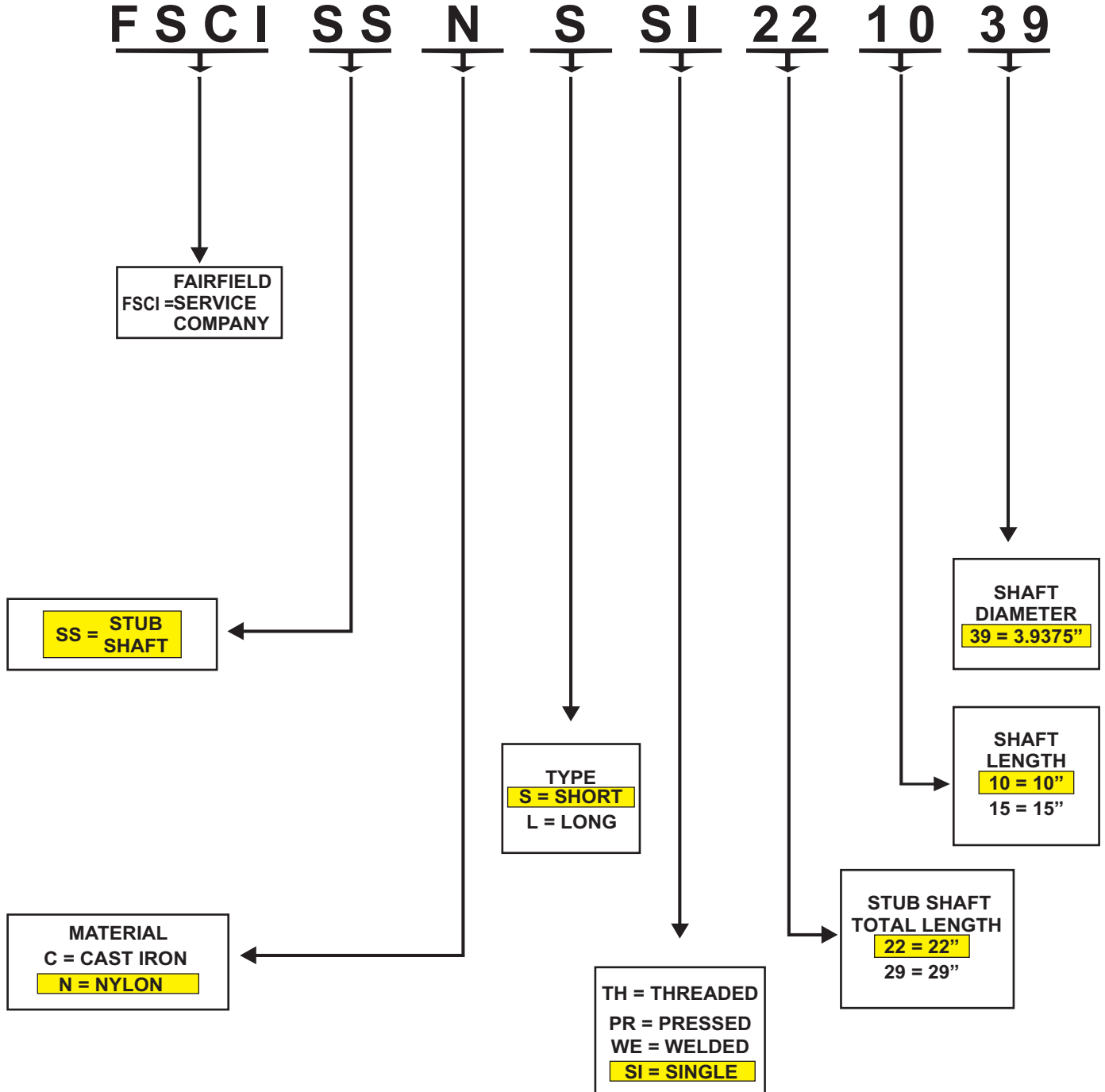
FAX : +1-740-387-4685

www.fairfieldservice.com



FSCI STUB SHAFT PART NUMBER SELECTION

FSCI STUB SHAFT PART NUMBER SELECTION

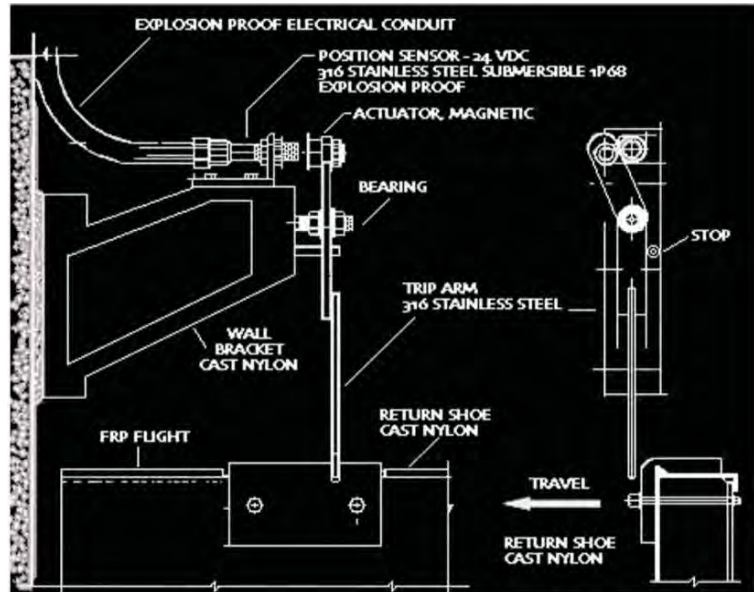
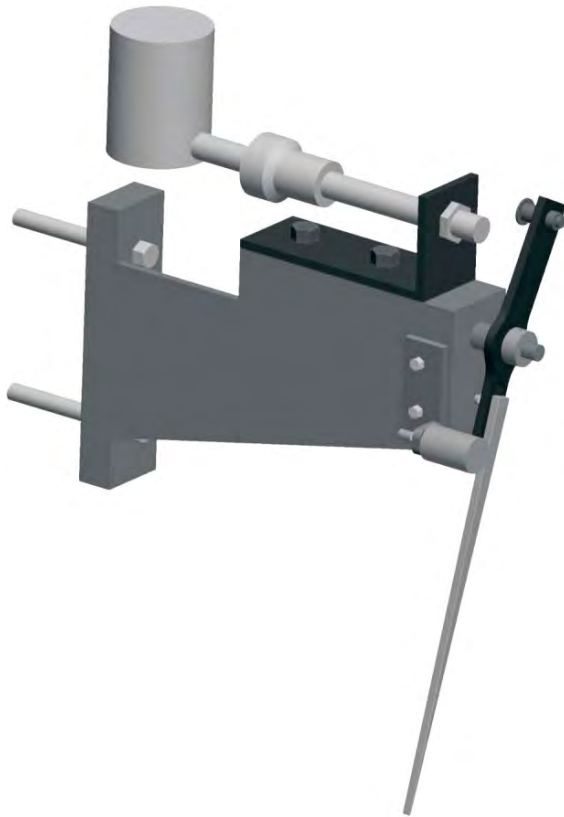


CALL : +1-740-387-3335

FAX : +1-740-387-4685

www.fairfieldservice.com

FSCI FLIGHT MONITORING SYSTEM



The action of the armature being rotated due to the travel of the flight causes the ceramic magnet to sweep past the sensor tripping the sensor and sending a signal to the PLC or SCADA system. The system can be programmed to assess for loss of motion, chain elongation, and asymmetrical chain or flight conditions (chain jump on one side) sending an alarm when warranted.

The Flight Control will sense excessive chain stretch, broken chain, and broken flight attachment links allowing the plant operator to shut down the system before significant damage occurs to the system. Adjustments or repairs required to the equipment are typically less involved due to the Flight Controls ability to sense failure or misalignment early.

CALL : +1-740-387-3335

FAX : +1-740-387-4685

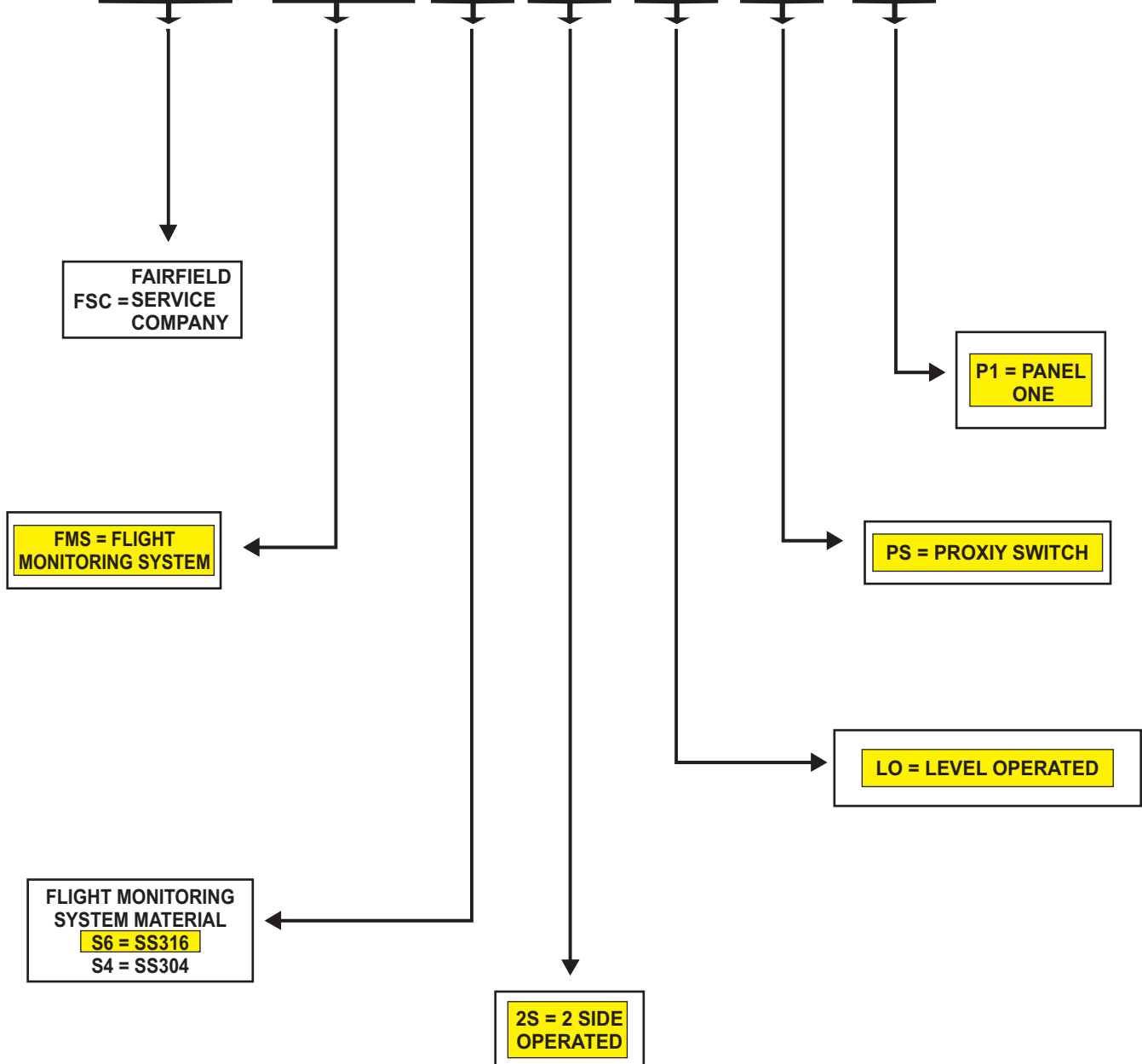
www.fairfieldservice.com



FSCI FLIGHT MONITORING PART NUMBER SELECTION

FSCI FLIGHT MONITORING SYSTEM PART NUMBER SELECTION

F S C F M S S 6 2 S L O P S P 1



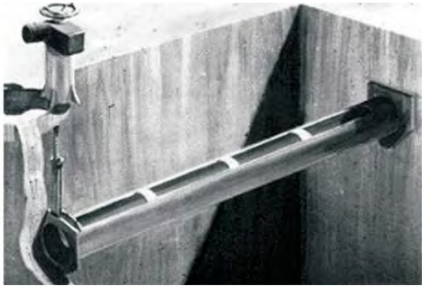
CALL : +1-740-387-3335

FAX : +1-740-387-4685

www.fairfieldservice.com

FSCI SCUM TROUGH

Scum Trough is suitable for installation in rectangular sedimentation tanks. It effectively removes sewage scum and floating materials from sedimentation tanks and discharge it into scum through.



- ▶ Easy To Install,
- ▶ Zero lubrication,
- ▶ Highly wear lubrication
- ▶ Lever, Mechanical or
- ▶ Hand Wheel actuation

■ AVAILABLE MATERIALS:

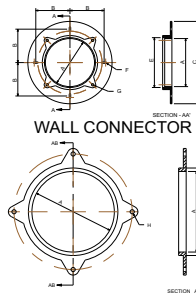
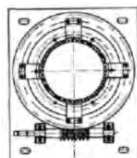
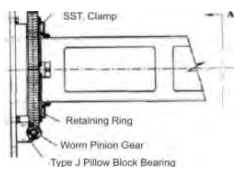
304 and 316 Stainless Steel, Carbon Steel, Fiber glass FRP

PIPE SIZE	8"	10"	12"	14"	16"	18"	20"
CONNECTOR							
Wt.	40#	50#	85#	88#	130#	138#	176#
A	8-27/32	10-15-16	12-15/16	14-3/16	16-3/16	18-3/16	20-3/16
B	6-11/16	8	9-3/4	10	12-1/2	12	13
C	16-1/2	18-3/4	22-1/4	23	28	27-1/2	29-1/2
D	2-1/4	2-1/4	3-1/4	3-1/4	3-1/4	3-3/8	3-3/8
E	9-5/8	11-3/4	13-3/4	15-3/16	17-1/2	19-11/16	21-11/16
*F	3/4	3/4	3/4	3/4	7/8	7/8	7/8
*G	1/2	1/2	1/2	1/2	1/2	1/2	1/2
SLEEVE							
Wt.	6#	8#	10#	16#	26#	32#	37#
H	9/16	9/16	9/16	9/16	9/16	9/16	9/16
J	8-27/32	10-15/16	12-15/16	14-3/16	16-3/16	18-3/16	20-3/16
K	9-1/2	11-5/8	13-5/8	15-1/16	17-3/8	19-9/16	21-9/16

* DESIGNATES SIZE OF BOLTS TO BE USED.

Wall Connectors can be supplied with UHMW Liners, or Grease Fittings.

■ CALL FOR PRICING AND DETAILS OF BELOW PARTS.



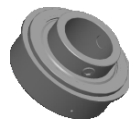
STAINLESS STEEL WALL CONNECTOR

NEOPRENE O-RING

SLEEVE



HAND WHEEL



ROLLER BEARING



GEAR



WORM

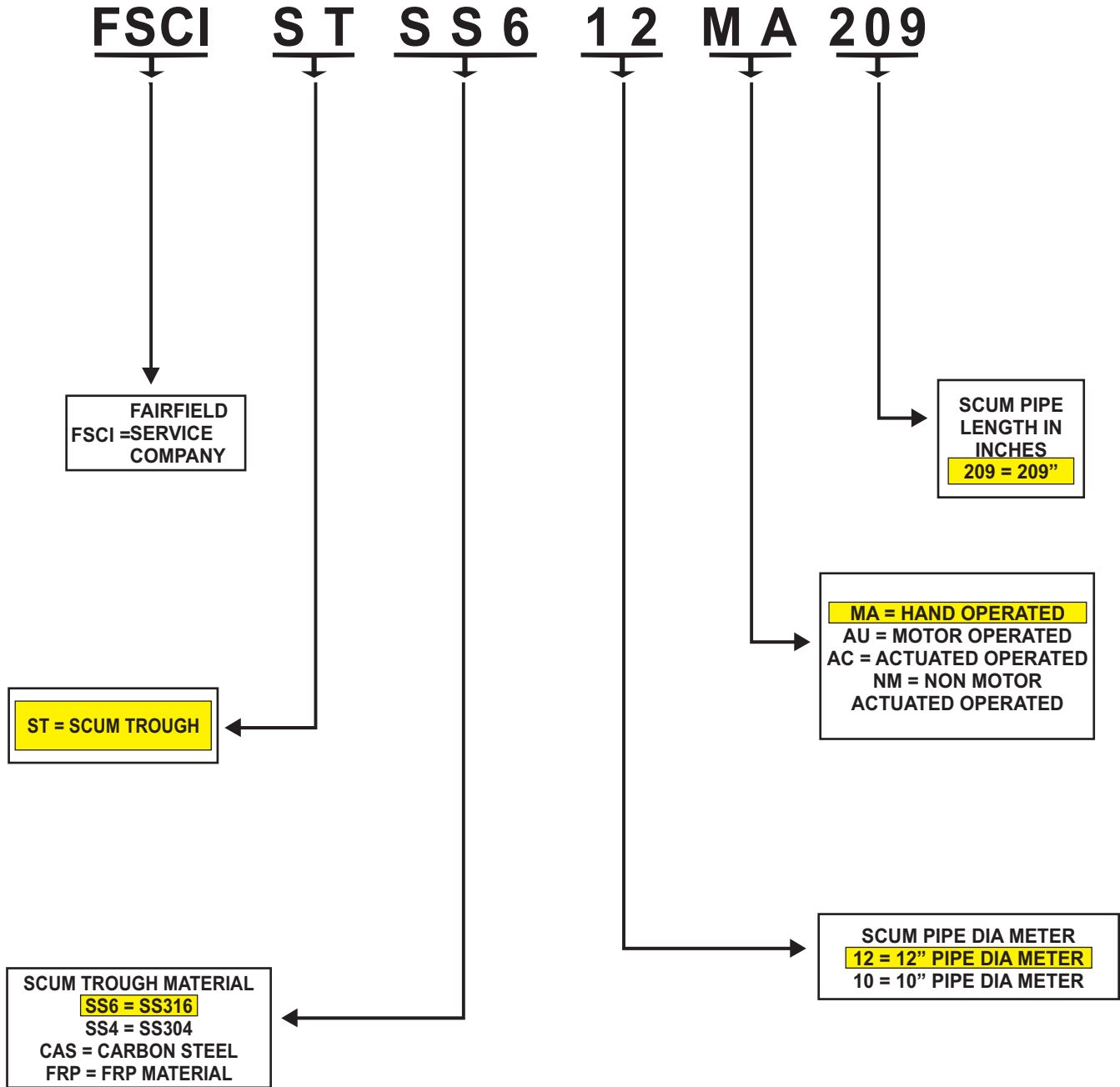
CALL : +1-740-387-3335

FAX : +1-740-387-4685



FSCI TROUGH CODING SYSTEM

FSCI FLIGHT MONITORING SYSTEM PART NUMBER SELECTION



CALL : +1-740-387-3335

FAX : +1-740-387-4685

www.fairfieldservice.com



FSCI PROXIMITY SENSORS



30mm stainless steel - AC

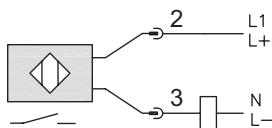
- 2 models available
- 30mm diameter
- 316L stainless steel housing
- 1/2" micro AC quick-disconnect plug with gold-plated pins (purchase cable separately)
- Complete overload protection
- IP69K rated for food and beverage applications
- M30 mounting hex nuts included
- Lifetime warranty

FSCI VFT Series Food and Beverage AC Inductive Prox Selection Chart

Part Number	Sensing Range	Housing	Connection	Output State	Wiring	Dimensions
FSCIZESVFTIA01M	(0 to 0.551 in)	Shielded	1/2" micro AC quick-disconnect plug	N.O.	Diagram 1	Figure 1
FSCIZESVFTIA02M	(0 to 0.866 in)	Unshielded	1/2" micro AC quick-disconnect plug		Diagram 1	Figure 1

Wiring diagram

Diagram 1



Connector



CALL : +1-740-387-3335

FAX : +1-740-387-4685

www.fairfieldservice.com



FSCI HARDWARE



17 T & 23 T sprocket hardware kit

1/2" -13 X 2-1/4" Lg. – 12 Nos (Bolt, Nut, Lw & 2 Fw)

3/4"-10 X 6" Lg. Threaded Rod w/2 Nuts, 2 Fw & Lw

3/4"-10 – 2 Nos Sq. head Set Screw

40 T sprocket hardware kit

1/2" -13 X 2-1/4" Lg. –24 Nos (Bolt, Nut, Lw & 2 Fw)

3/4"-10 X 8" Lg. Threaded Rod - 2 Nos w/2 Nuts, 2 Fw & Lw

1/2" -13 X 3-1/2" Lg. –2 Nos (Bolt, Nut, Lw & 2 Fw)

3/4"-10 – 2 Nos Sq. head Set Screw

Fsci Flight hardware kit

3/8"-16 X 2-1/2" Lg. – 2 Nos Bolt

3/8"-16 X 4-1/2" Lg. – 8 Nos Bolt

3/8"-16 Nylock Nut – 20 Nos

3/8"-16 Flat Washer – 20 Nos

3/8"-16 Lock Washer – 10 Nos Bolt



Also available hardware kit for wall mounting cap bearing, stub shaft mounting anchor bolts, wall brackets anchor bolts and hardware, scum skimmer anchor and hardware, return rail hardware, weld washer and available all type SS 316 hardware for waste water treatment plant.

CALL : +1-740-387-3335

FAX : +1-740-387-4685

www.fairfieldservice.com



FSCI LOOP CHAIN



Description :

- Loop chain 6" pitch.
- Chain Tensile Strength is 10,000 lbs.
- Chain Material Nylon.
- Base Polymer is PA6.
- Mostly Use in Oil Water Separation Unit.

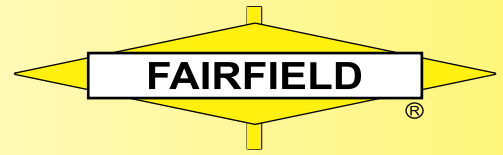
MSDS DATA SHEET :

Mechanical	Tensile Strength At Break	1040.1-2006	95	MPa
	Tensile Elongation At Break	1040.1-2006	75	%
	Flexural Strength	9341-2008	158	MPa
	Flexural Modulus	9341-2008	1950	MPa
	Charpy Notched Impact Lea	1843-2008	25	kJ/m²
Thermal		1634.1-2004	165	°C
	Heat Deflection Temperature	1634.2-2004		
Physical Proerties	Density	1636-2008	1.1	g/cm³

CALL : +1-740-387-3335

FAX : +1-740-387-4685

www.fairfieldservice.com



www.fairfieldservice.com

SLUDGE COLLECTORS INSTALLATION LIST

Los Angeles, CA
Whitwell, TN
Chicago, IL
Westwego, LA
Bower Bay, NY
Odenville, AL

San Jose, CA
Long Beach, CA
Scranton, PA
Coney Island, NY
Hyperion, CA
Hudson, MA

Lake Elsinore, CA
Palm Desert, CA
Brewster, NY
Philadelphia, PA
Baton Rouge, LA



FAIRFIELD SERVICE COMPANY IS MBE CERTIFIED.

Plant

1401 Kentucky St.
Michigan City, IN 46360
Phone: 219-872-3000
Fax: 219-872-4327



www.fairfieldservice.com

Sales Office

Engineering, Design & Development

3007 Harding Highway East,
Box 2 North, Marion, OH 43302-8532
Phone: 740-387-3335
Fax : 740-387-4685

Water & Wastewater Treatment Equipment