



Stainless Weirs

100%

**Stainless
Steel**

11 yr. warranty

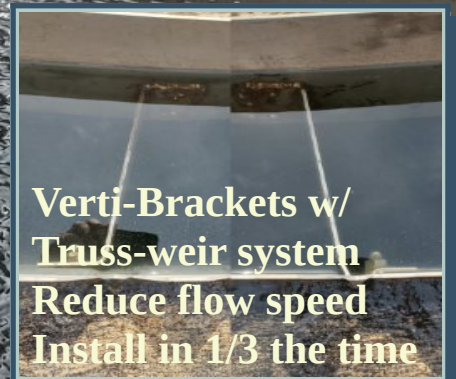
Patent Pending
Trade Secret
Intellectual Property



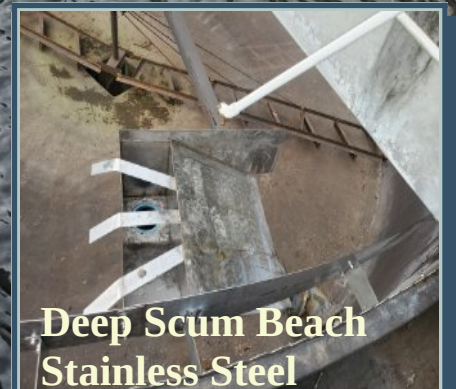
High Flow Split Plate
Stainless Steel



Visi-Baffles
Stainless Steel



Verti-Brackets w/
Truss-weir system
Reduce flow speed
Install in 1/3 the time



Deep Scum Beach
Stainless Steel



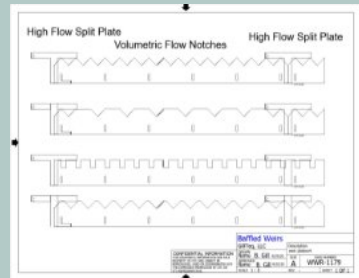
Stainless Weirs



ALL Stainless Steel Visi-Baffles, Volu-Weirs, Verti-Brackets, Deep Scum Beach and Scum Skimmer better than fiberglass/frp! 100% retrofittable to all existing tanks and bolts. Lifetime weirs!

Stainless Weirs/Baffles/Verti-brackets are used throughout all of industry on tanks and channels to evenly distribute liquid and regulate flow evenly in process industry. Through the use of Baffled Weirs, floating materials are separated from the liquid and a regulated and an even flow of liquid will enter the outlet trough/laundry creating uniform and evenly distributed flow around the tank periphery. Perfect design to optimize the performance of WeirWasher, Automated Cleaning System for algae control. **Stainless steel will not fail or delaminate over time like fiberglass.**

11 YEAR WARRANTY ON MATERIAL!



Volu-Weirs-Patent pending-*measure/balance flow from the field*



Precisely CNC cut weirs to any desired shape with a flow notching system (patent pending) that at the tank shows actual flow in the tank relative to the height of the water nappe (tank water level) with actual flow rates printed/cut into the side of the weir plate. Field verification of approximate flow at each tank can be known simply by looking at the associated weir notching system. Multi-tank flow balancing can be



achieved in the field by use of the weir notches to ensure equal flow is being split between each tank when using multi-tank feed distribution boxes optimizing facility operations and sludge loading and tank performance. **11 YEAR WARRANTY ON MATERIAL!**

Welded Truss Weir mounting system "CONTRACTORS TIME SAVER"-Patent pending -*One bolt/ft for weirs, brackets and baffles instead of 6 bolts. 83% less Bolts! Less drilling, less bolts., less time. Install in 1/3 of the time!*



Installation costs reduced greatly due to one bolt/2ft mounting vs. old style 5-6 bolts resulting in less time during installation. Pre-built and welded, unitized one piece weir/bracket/baffle assemblies allow for simplified field installation and future ease of maintenance. One piece, custom jig built to radius, pre-fabricated 8ft sections. Jig built to ensure consistency and "drop in" repeatability. Water level relative to baffle height will be maintained during field leveling due to one piece design. No bolt loosening over time. Lifetime weirs which will outlast the concrete of the tank with an **11 YEAR WARRANTY**

Verti-Brackets, -Patent pending-*25% increased flow area, 25% reduced flow velocity and less growth area*



Precise waterjet cut (adjustable if needed) vertical bracket mounting system for the scum baffle that increases total flow area by up to 25% (4" wide brackets vs. 1/8" wide Verti-Brackets) thereby reducing flow velocity allowing for elevated blankets reducing short circuiting/bypass flow/pin-flock carryover. The vertical brackets additionally remove the algae growing horizontal surface as well as eliminates the horizontal settling surface for flock, grease and other settling materials.



Algae control in the up flow area between the baffle and weirs is much improved due to no shielded area under the Verti-brackets vs. horizontal fiberglass/cup horizontal bracket which block cleaning of the up flow area and submerged inner wall. Vert-Brackets are retrofittable to existing baffles without removing the baffle. Adjustable brackets are available upon request but not recommended with an **11 YEAR WARRANTY**

High Flow Split Plate-Patent pending-*emergency flow balancing/measurement*

Patent pending High Flow Split Plates which are evenly distributed around the circumference of the weirs at each weir plate split create a more even and regulated flow at emergency/beyond design flows improving distribution and settling, resisting short circuiting or bypassing of the settling of the clarifier during extreme flow events.



Deep Scum Beach-*Stainless scum beach with deep scum collection for older designs*

Designed to increase the volumetric area of the scum collection and removal system using the existing scum skimming system by creating a larger area for removal. The deep beach allows for a larger volume of floatable materials to be collected in each rotation of the skimmer. As the floating material begins to compress, deep scum beach and extended skimmer capture the floating material and trap it prior to compression. Angled blade supports clean the bottom of the skimmer and allow for a gradual lowering of the skimmer into position, thereby reducing the mechanical shock and the self adjusting skimmer with an **11 YEAR WARRANTY**.

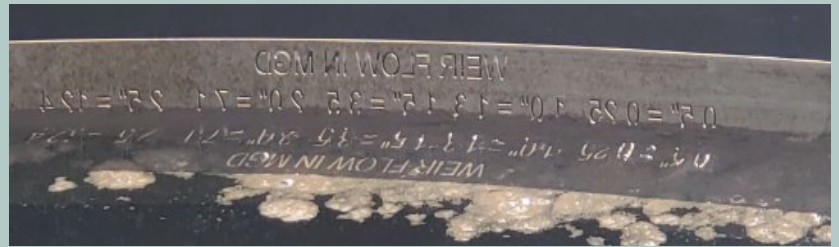


Visi-Baffles-*Calculate flow at each tank*

Volumetric flows at the different heights in weir notch (nappe) are water jet cut into the side of the scum



baffle. Field flow calculations are now capable without contacting the control room as well as a more precise flow balance to each tank with an **11 YEAR WARRANTY!**



Advantages of the Baffled Weirs, Verti-Brackets:

- **ALL Stainless Steel** so No delamination over time, no fibers getting on workers skin when entering tank.
- **Design is trade secreted, patents in progress, Sole Source specification**
- **High Flow Split Plates** creates controlled even restriction increasing settling action in emergency flows
- **Visi-Baffles** have visual flow gage CNC cut optically at tank see approximate flow at each tank
- **Customizable** to existing bolt holes in tank-No re-drilling
- **11 year warranty on material. No delamination or fibers.**
- **Volu-Weirs** Flowrate cut into side of weir for reference at each notching
- multi-tank flow balancing from the field using visual notches
- **Verti-Brackets** baffle mounting system eliminate material build up on horizontal surfaces and reduces algae growth
- **Unitized design Truss Weirs**, Brackets and Baffles are pre-assembled, increasing strength and simplifying installation
- **Deep Scum Beach** design for improved scum removal
- **All weir geometries** All weir geometries, spacing and designs
- **WeirWasher, Automated Cleaing System** Designed and optimized for use with the WeirWasher, ACS



325 Front St. ste. #435, Evanston, WY 32930
 Phone: 1-866-447-2496
 Fax: 1-503-646-9293
 Email: info@gillteq.com
 web: www.gillteq.com