



# Vector Spray

# Angled Directional Spray Driving Material

Patented and Trade Secret Protected



Feed Well Spray  
Deconstruction



Directional Spray



Bridge Service swivel



Deconstruction Spray





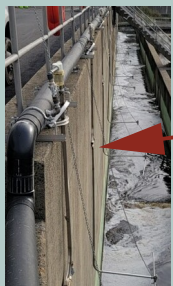
**Directional Vectored spray to deconstruct, push and break up floating dense materials on the surface and floor of Thickeners, Concentrators, Primary or Secondary settling tanks. 100% retrofittable to all existing tanks and bolts on/no draining. Swivels up to clean out!**

Feed wells and inlet zones accumulate the gas laden fats, oils and grease (F.O.G.) and this material is laden with the gases from the aeration process as well as from the biological process. The tank feed material is adhesive and highly "sticky/slimy" with a very high level of surface tension which traps gases making the feed material float. Vector spray breaks open, releases the trapped gases and deconstructs the feed material. By breaking down the surface, Nocardia growth is also eliminated mechanically by physically breaking down and removing the growth environment.

**Patented and Trade Secret Protected**

**Digesters, Concentrators, Primary Clarifiers and Thickeners**

In Digester and thickeners, the accumulation of hydrophobic cells associated with their trapped biogas bubbles can create a very large mass of hydrophobic cells and foam on the top level of the tank and can reach many feet in depth and can cause complete failure in the operation of the process due to entrapped new biomass entering the tank and allowing the foam to putrefy and offgas hazardous gasses.



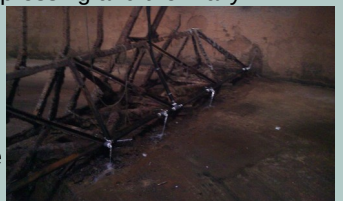
**Vector Spray Deconstruction Spray**

The simple directional deconstructing Vector Spray breaks up and drives the surface material towards the leading area before the scum beach that can break up and clean the inorganic materials that need to be removed.

**SERVICE SWIVEL JOINT ALLOWS CLEANING OF NOZZLES FROM THE BRIDGE-NO BOAT ENTRY TO CLEAN NOZZLES!!!**

**Feed Well/Zone**

Center feed well zone dynamic Vector Spray deconstructs and drives the feed stock towards the perimeter of the tank to eliminate nocardia growth and the formation of the independent floating eco-system, oxygen suppressing and thermally insulating undesirable biological process that harbors nocardia, extra-process organism and various types of filter flies and other flying insects and in the worst case plants and trees if not regularly cleaned.

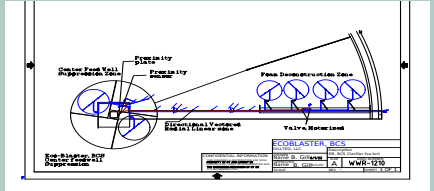
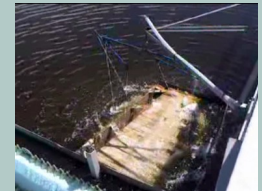


**Tank Floor and Inner Wall drained Automated Cleaning**

The bottom of the tank is flushed while at 90% drained to break up, deconstruct and drive the last materials to the center of the tank while the mechanism is being rotated for the final draining and cleaning process that results in a fully automated washed and sprayed tank and walls with minimal or possibly no operator tank entry.

**Advantages of the Vector Spray:**

- **Center feed zone deconstruct accumulated materials**
- **Vector Spray deconstructs and drives surface foam to the scum beach**
- **Surface Deconstruction zone before scum beach recovering nutrients**
- **Beach Blaster clean beach surface and break up scum beach trough**
- **Deconstruct and break apart materials accumulated on the liquid surface**
- **Each sprayer penetrates over 2 feet into the foam**
- **Mechanically breaking open the foams encapsulated biogas bubble**
- **By breaking up the foam blanket, all of the trapped nutrients are released back into the process.**
- **Drained tank cleaning-to break up, drive and force the material accumulated on the walls and floor**
- **Breaking up the foam matt in 3 dimensions vs. the standard one dimensional/linear static sprays mounted to fixed bridges.**
- **Eliminate material build up on horizontal surfaces, tank surface and tank drained floor (or even underwater)**



➤ **Floating skimmer retrofit on SS Cable**



23781 US Hwy 27, Lake Wales, 33859  
 Phone: 1-866-447-2496  
 Fax: 1-503-646-9293  
 Email: [info@gillteq.com](mailto:info@gillteq.com)  
 web: [www.gillteq.com](http://www.gillteq.com)