

# Ballwin Public Safety Through The Years Part 1 - Fire and EMS

Presented by: Todd Godefroid



# Todd Godefroid

## ★ Law Enforcement Explorer

- St. Louis County 5th Preceint 1982-1983
- Ballwin Police Department 1983-1987

## ★ Ballwin Fire Protection District

- Reserve Firefighter
- Full-time Firefighter/Paramedic
  - Fire Investigator
  - Public Safety Education Specialist
  - Fire Inspector
  - School Resource Officer - Ellisville Elementary



# BUCKET BRIGADES

There was no organized fire protection in the Ballwin area prior to 1908.

Neighbors used bucket brigades to battle blazes.





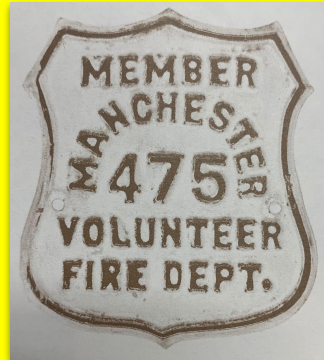
# 1908 Manchester Volunteer Fire Dept.





# “Rumsey” Hand-Operated Pumper 1908-1911

- Pump, 200' discharge hose, 50' hard suction - \$306.50





# 1929 Model-A Ford Pumper



- On October 16th, 1934 the residence of the town of Ballwin, led by Art Motz and Fred Rethmeier, met to pledge and collect money for the creation of a fire department.

Pledges from 60 neighbors contributing from \$1-\$25, collected a total of \$347.00 to start the Community Fire Protection Association.

- The Community Fire Protection Association was officially recognized by the State of Missouri on November 26th, 1934.

**Fred Rethmeier - President**

**Oliver Blinne - Secretary**

**Harry Schrader - Treasurer**



# Fire Chiefs of the Community Fire Protection Association

---

**Charlie Buermann**

**Herman Baumer**

**Walter Busch**

**Roy Hellman**

**Ted Dahlke**

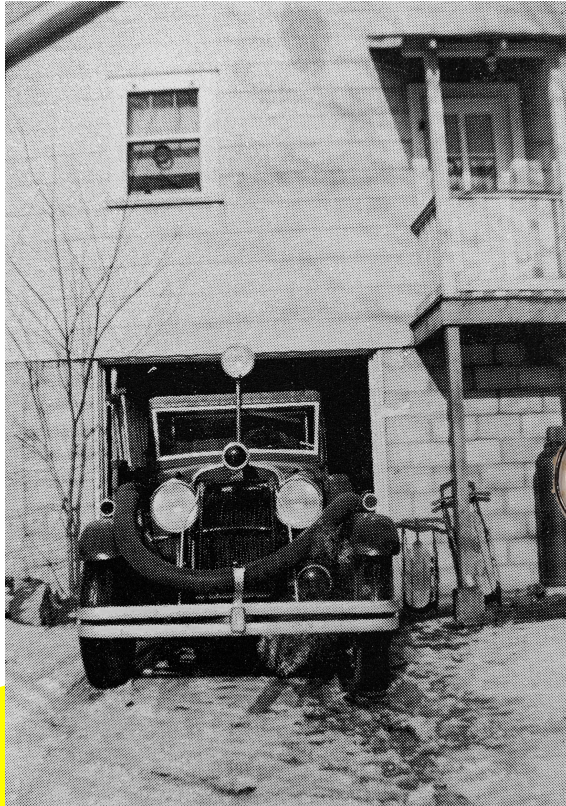
**Charlie Burkhardt**

**Dick Rethmeier**





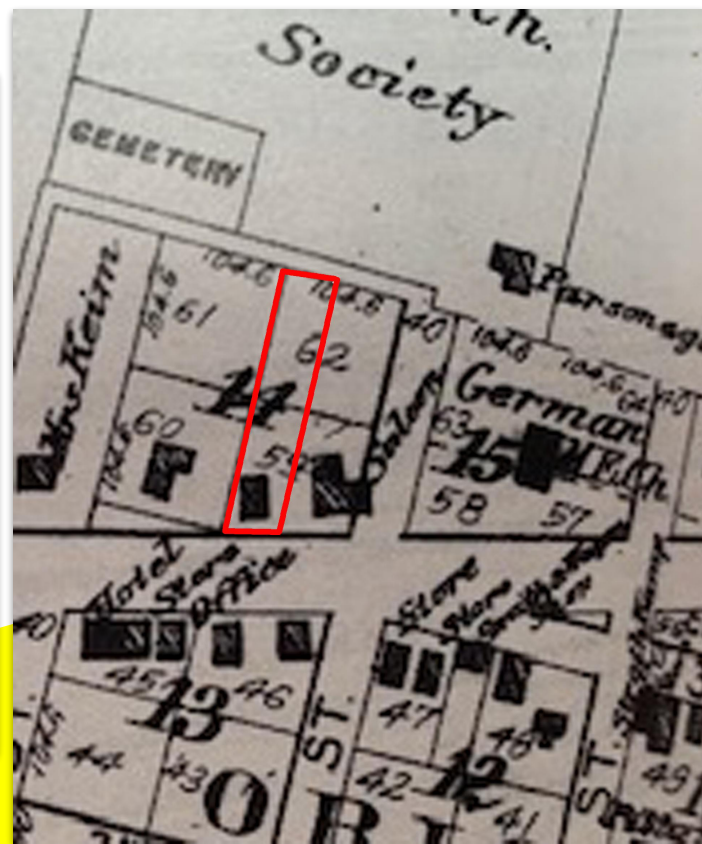
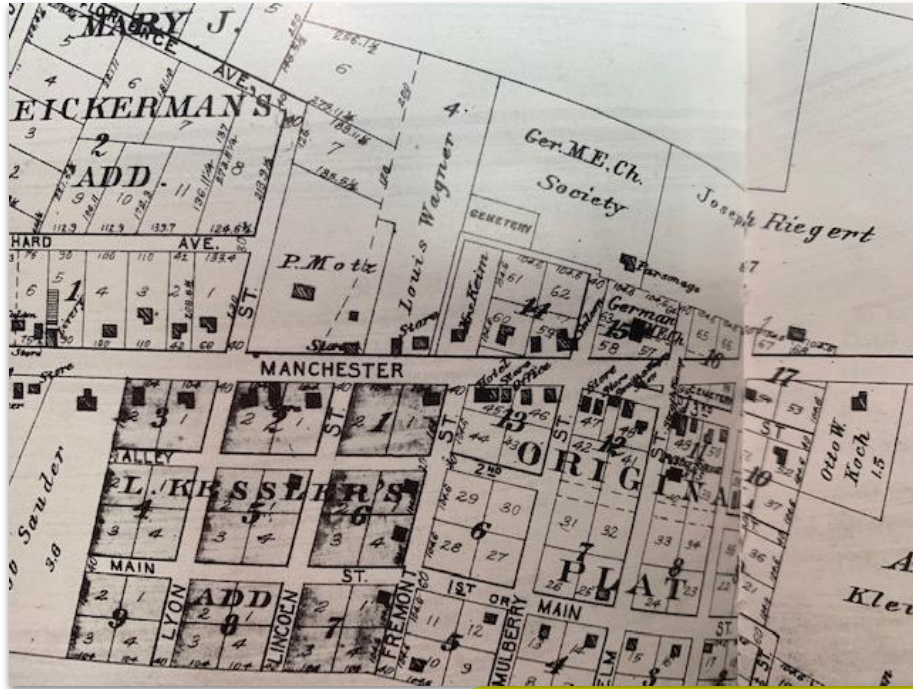
# COMMUNITY FIRE PROTECTION ASSOCIATION 1934 - 1957



## First Firetruck

1909 - Nash Chassis with a Cadillac Engine  
Stored in the basement of the home of  
T.J. Hunnicutt at 310 Manchester Rd.



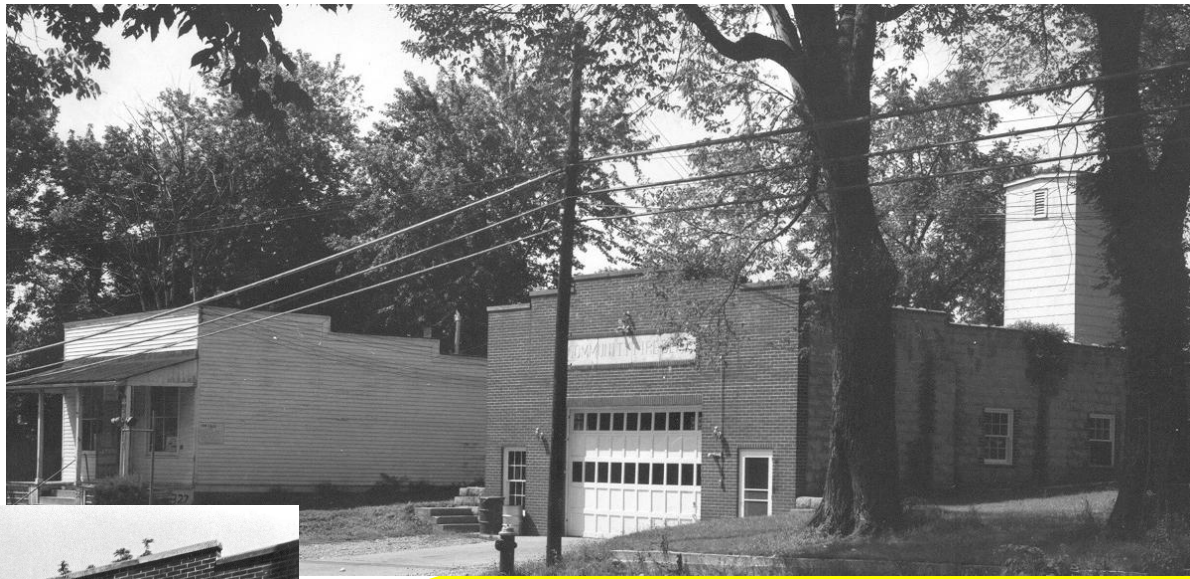


# Community Fire Protection Association Fire House 1940





**Community Fire Prot Assoc.  
First Fire Station  
1940**



**1909 - Fire Truck**

**1946 - Chevrolet Fire Truck  
Central Fire Truck Corporation**



# Castlewood Volunteer Fire Department







**Fire Chief  
Frank Rucker**



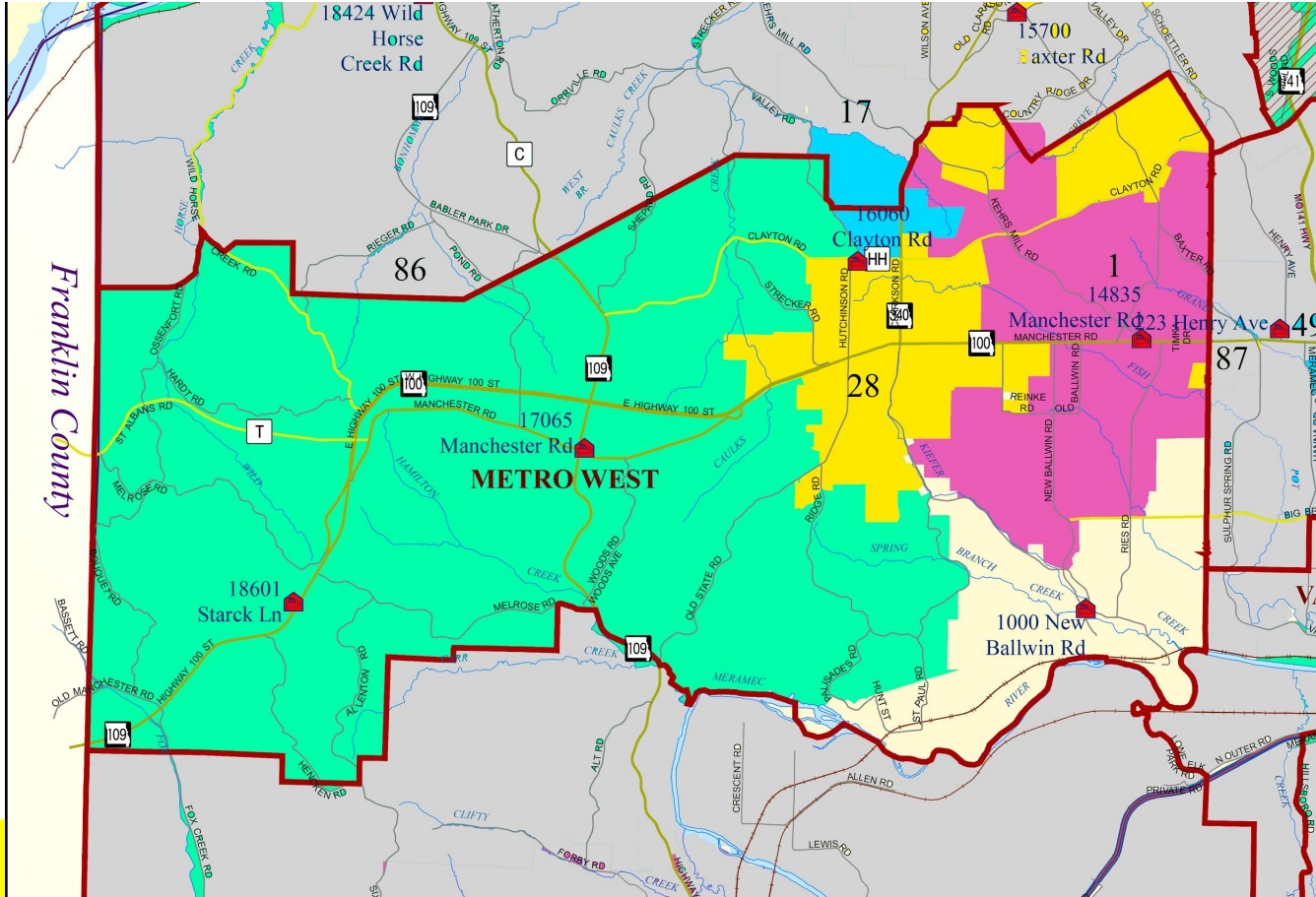
**Ballwin Fire District  
First Board of Directors**



**1946 Chevrolet**

**Ballwin Fire Protection District  
1957**





# Ballwin Fire Prot. Dist.

57 ½ Sq. Miles

- Ballwin
- Clarkson Valley
- Ellisville
- Wildwood
- Winchester
- St. Louis County





**Current Station # 3 & Administration  
Wildwood**



**Original Station 3  
1960 - 1982**







**Station #2 - Castlewood  
1994 - Present**



**1957 - 1960  
Volunteer Truck**

**1970 - 1994**



**1960 - 1970**

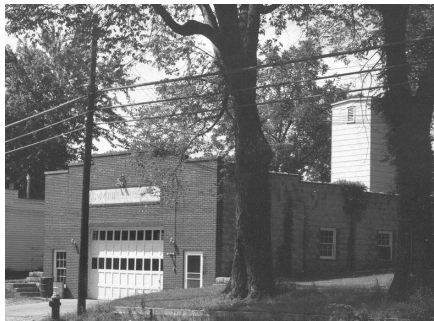






## Training Facilities Station #2 - Castlwood





1940 - 1961



Station #1 - Ballwin  
addition 1966  
Current Station 1996



1961 - 1966







**Station #4 - Ellisville  
1988 - 2006**



**Present Station #4**





**Fire Station #5  
Wildwood**





# Emergency Medical Services



**First Ambulance**  
**1968 Ford Station Wagon**  
(Also served as the Chief's Car)



# Emergency Medical Services



# LEADERSHIP

**Chief Frank Rucker**  
1957 - 1980



**Chief Jim Silvernail**  
1980 - 2003

**Chief Vince Loyal**  
2003 - 2015



**Chief G. Mike Krause**  
2015 - Present





# GOVERNANCE



**Tim Flora**  
**Chairman**



**Ralph Starck**  
**V. Chairman/Treasurer**



**Mark Macinski**  
**Secretary**



# METRO WEST FIRE PROTECTION DISTRICT

- 90 On Shift Firefighter/Paramedics
- 5 Stations w/5 ALS ambulances, 2-ALS Ladder Trucks, 3-ALS Pumpers and an ALS Heavy Rescue
- Dive Team Trailer
- Four wheel drive and all terrain wildland firefighting vehicles
- Full time vehicle maintenance division
- Community Outreach Division
- Fire Marshal and Inspectors Division
- Answer nearly 8,000 call for emergency assistance each year





# THE ROLE OF TODAY'S FIREFIGHTERS AND PARAMEDICS HAS GROWN FAR BEYOND PUTTING OUT FIRE AND GIVING FIRST AID





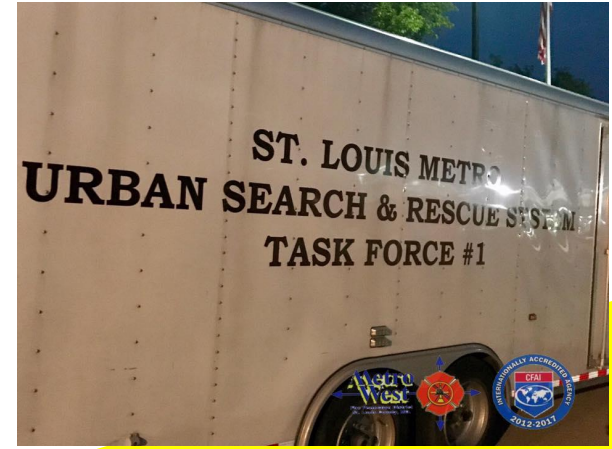
# Dive & Swift Water Team







Missouri Task Force 1  
&  
St. Louis County USAR  
Strike Team 2



# St. Louis County Police Tactical Medic





# Community Education







*High Angle Rescues*



*Honor Guard*



*Haz-Mat Team*



# QUESTIONS?

