

**Viva**<sup>®</sup>  
Metal Composite Panel



WHERE STRENGTH  
MEETS STYLE

[vivaacp.com](http://vivaacp.com)

# ABOUT **VIVA**

**ESTABLISHED INNOVATORS** Leading the ACP Industry since 2003

---

**TRUSTED MATERIAL SOURCES** We source materials only from certified vendors, like Hindalco, Nipon and many more.

---

**STATE-OF-THE-ART FACILITIES** Equipped with cutting-edge machinery in Gujarat for high-quality ACP always.

---

**FIRE-SAFE** Experts of FR Class A2+ ACCP in India, ensuring best-in-class ACP

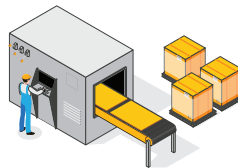
---

**CUSTOMER-CENTRIC APPROACH** We are committed to customer satisfaction with our value-engineered high-quality products.

# WHAT SET US APART?



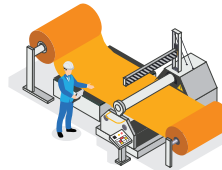
**21+ YEARS**  
Manufacturing Excellence



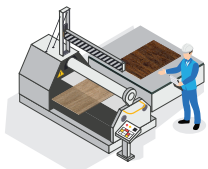
**15 MILLION M<sup>2</sup>**  
Annual Production Capacity



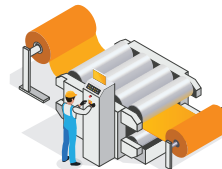
**14 PRODUCTION LINES**  
State-of-the-Art Facility



**100+ QUALITY TESTS**  
In-house Labs



**500+ SHADES**  
Infinite Customisation



**4 COLOR COATING LINES**  
1<sup>st</sup> in India

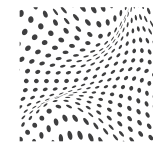




# WHERE **STRENGTH** MEETS **STYLE**

Discover **Bricklyn**, an ACP series that merges Brooklyn's iconic style with Jenga's precision. Each part adds to a sleek, strong design with unmatched flexibility for beautiful, long-lasting facades.

With **Bricklyn**, you're not just building—you're creating something enduring. Experience design where each layer shows balance, and every structure stands strong.



**SYNCHRO  
TECHNOLOGY**

Experience unmatched realism with textures that align perfectly with printed designs, bringing surfaces to life with a natural feel and premium finish



# ANIL KAPOOR UNVEILS



Where every layer speaks  
strength and sophistication.





# Crema Marfil

## VA 12501

Soft, warm tones define this shade, adding an understated elegance to both interiors and exteriors. Neutral, earthy colours enhance surfaces with a gentle, refined charm that complements both classic and contemporary designs.

Choose Crema Marfil to evoke a refined ambience, transforming spaces into warm, inviting sanctuaries of beauty.







**Crema Marfil**  
VA 12501

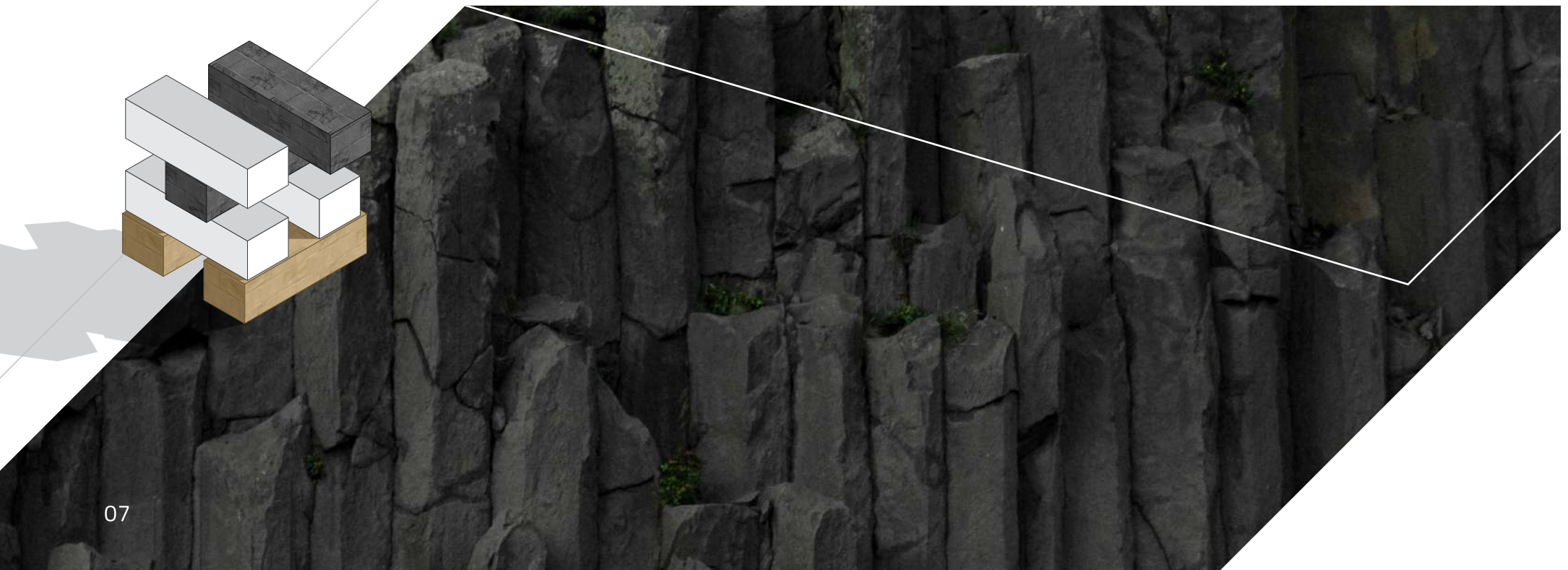
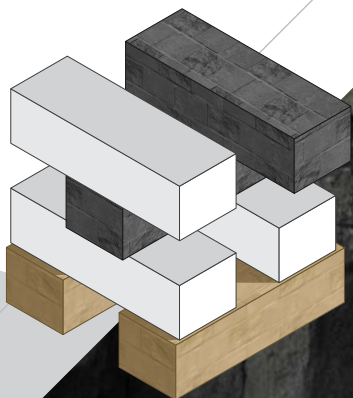


# Fusion Slate

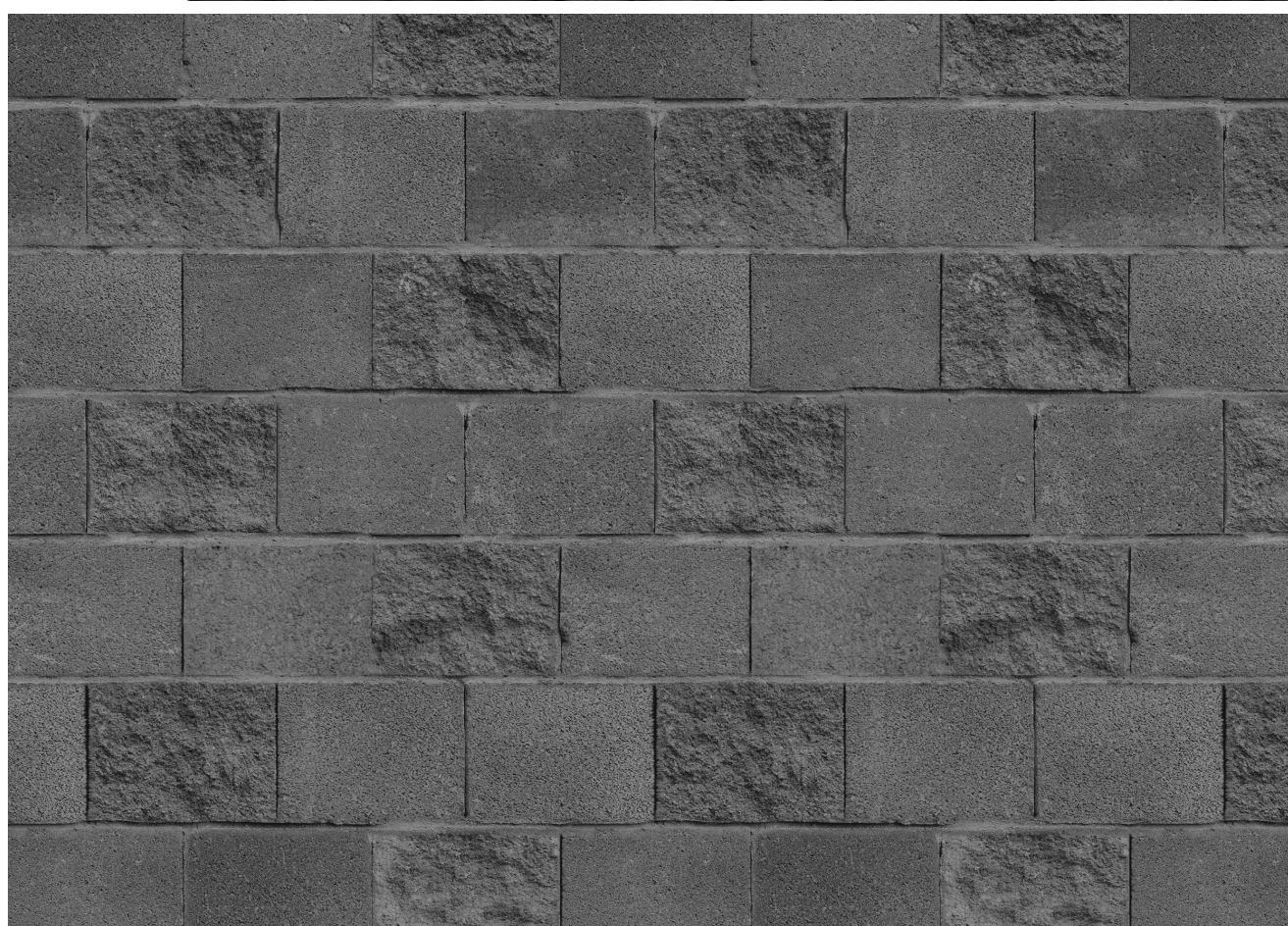
## VA 12502

Deep, muted tones give Fusion Slate a contemporary edge and make it perfect when you wish to add a bold statement to facades, panels, walls or interiors. Its rugged texture and subtle contrast create a sleek, urban aesthetic that enhances architectural precision.

Choose Fusion Slate to evoke a dynamic ambience, transforming spaces into striking, refined showcases of style.







## Fusion Slate

VA 12502

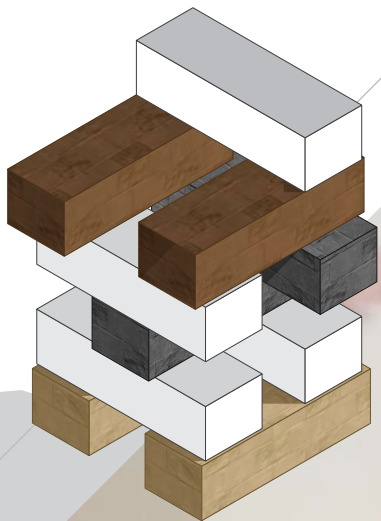


# Brown Rusty

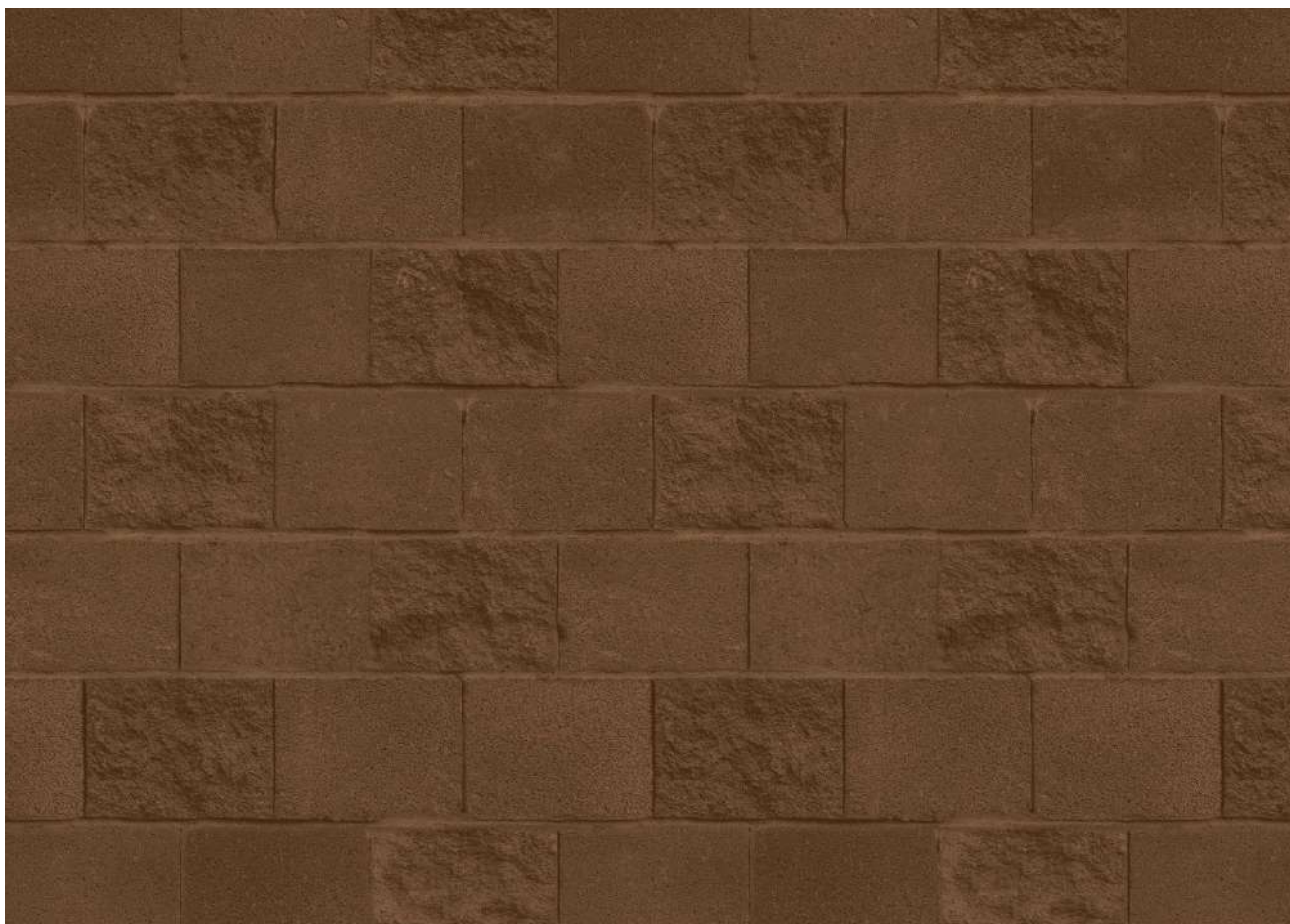
## VA 12503

Featuring rich, earthy brown tones with a rugged texture, Rusty Brown evokes the warmth of aged brick. Its natural, weathered look enhances facades with an authentic, rustic appeal, perfect to add depth and character.

Choose Rusty Brown to create an inviting atmosphere that feels grounded and timeless, blending effortlessly with a range of architectural styles.







**Brown Rusty**  
VA 12503

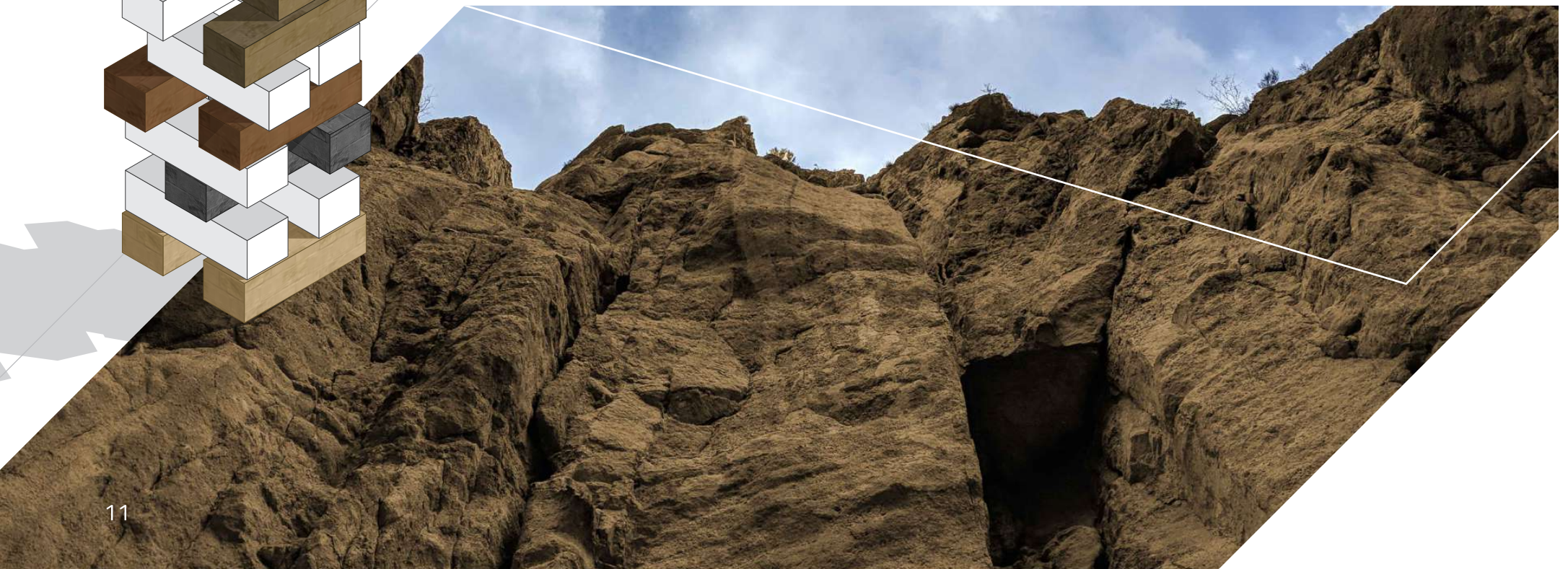
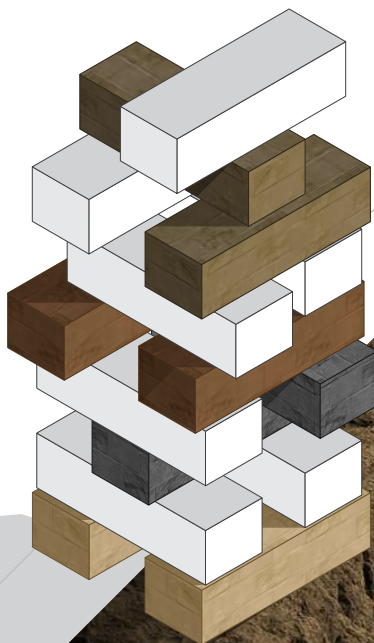


# Verde Muschio

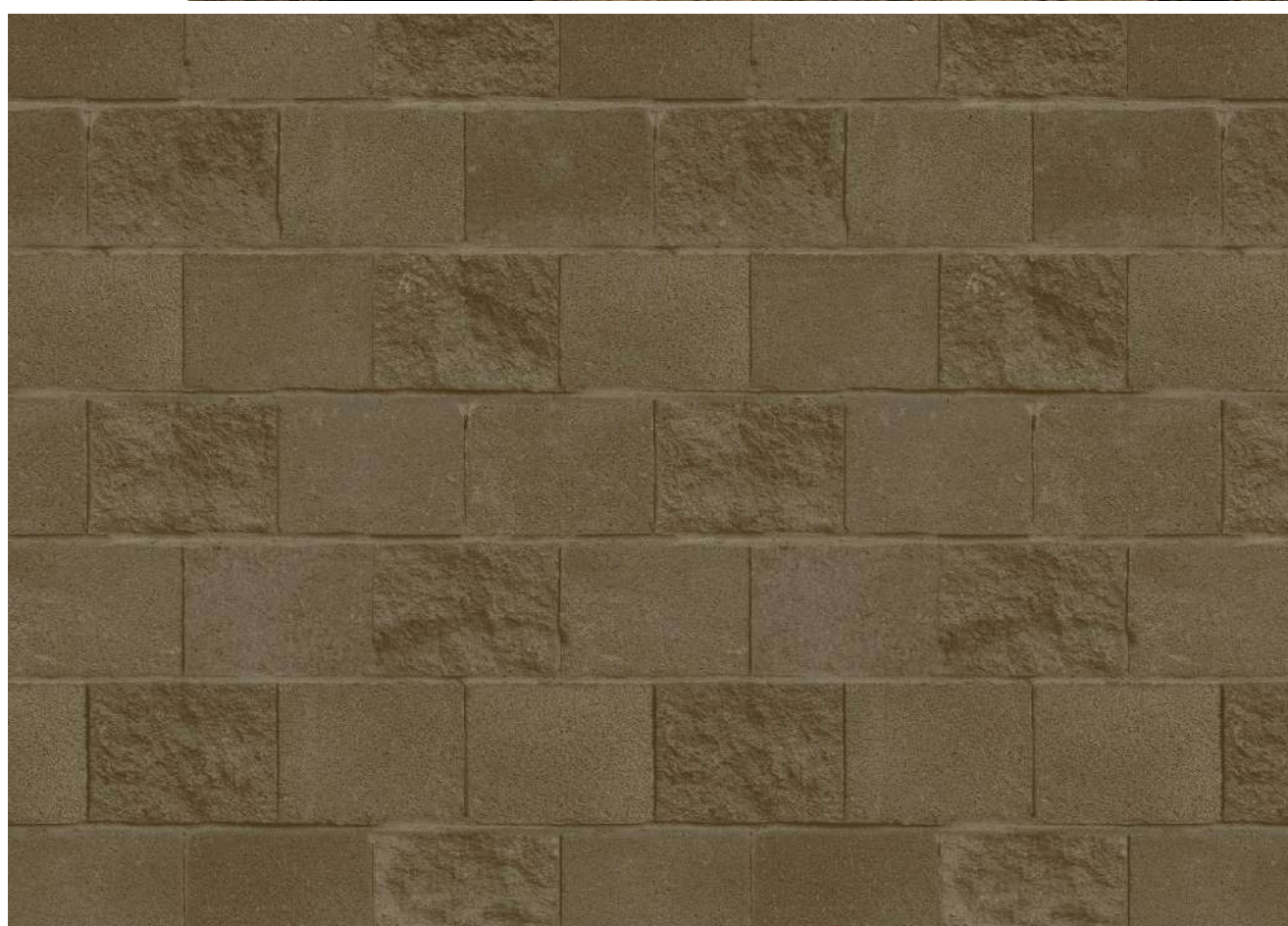
## VA 12504

Verde Muschio features deep, earthy tones that add a sense of natural strength and elegance to facades. Gentle, earthy hues create an inviting harmony, perfect for adding a touch of nature to both modern and classic settings.

Choose Verde Muschio to add depth and a refined, organic touch to your architectural design.







**Verde Muschio**  
VA 12504

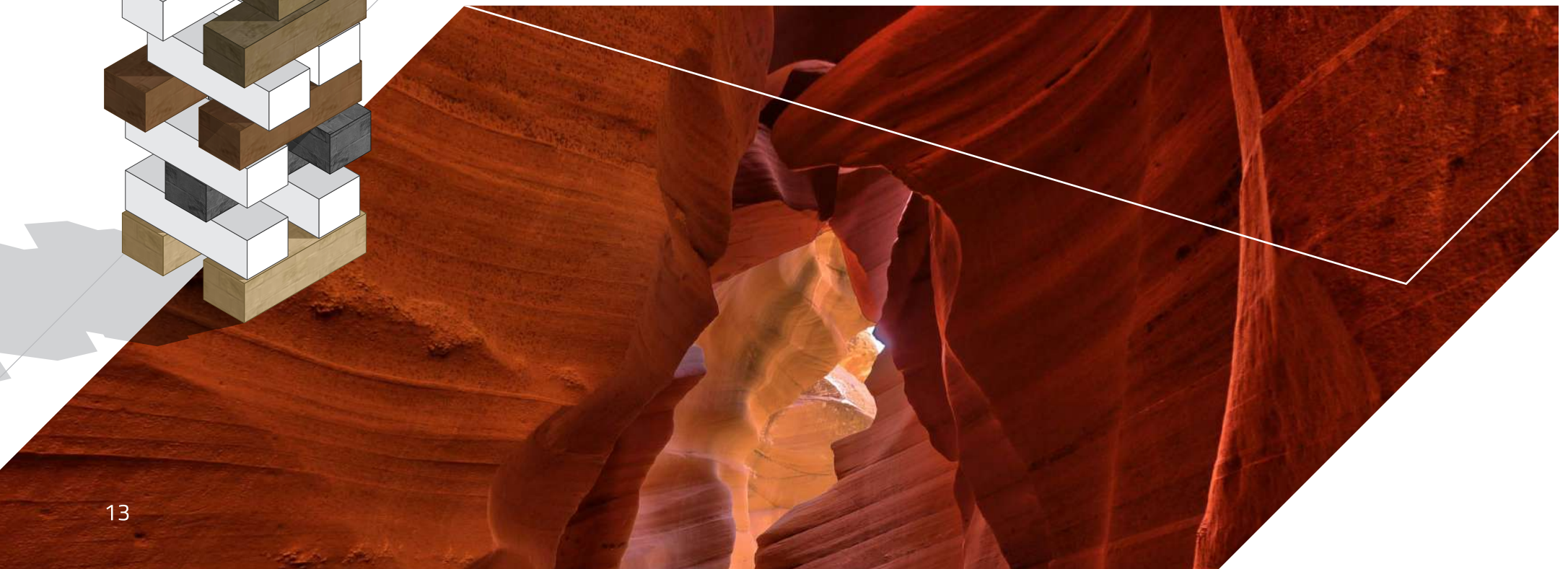
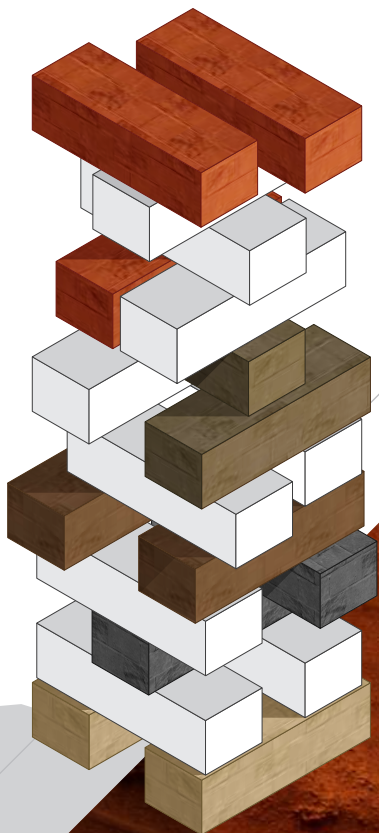


# Natural

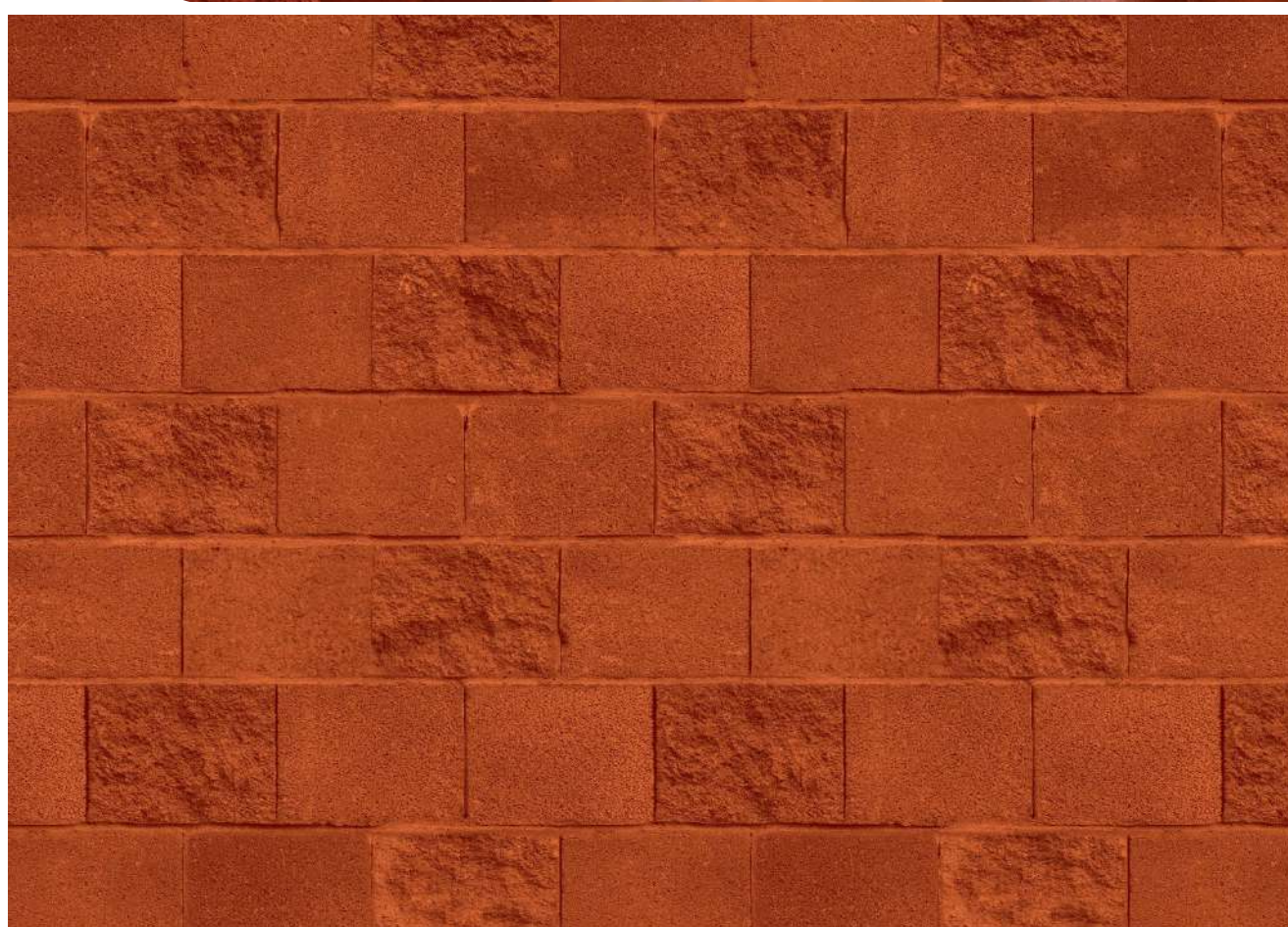
## VA 12505

Radiating a vibrant, earthy red, Natural adds a dynamic yet grounded feel to your architectural designs. Its organic tones provide warmth and cohesion, creating an inviting, grounded aesthetic.

Choose Natural to transform spaces into timeless structures that feel both welcoming and beautifully balanced.

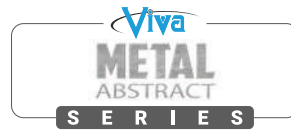




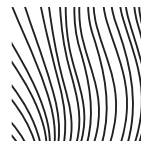


**Natural**  
VA 12505

# OUR SERIES TAILORED FOR **WORLD-CLASS ARCHITECTURE**



& Many More....



ETCHED  
TECHNOLOGY



# A CLOSER LOOK TECHNICAL ASPECTS

A	Panel Dimensions					
	Standard	2440 mm x 1220 mm	3050 mm x 1220 mm	3660 mm x 1220 mm		
B	Panel Thickness (LDPE/Mineral/Aluminium Corrugated)					
	Panel	Core	Top Skin	Bottom Skin	Alloy	
	6 Star					
	3.0 mm	2.4 mm	0.30 mm	0.30 mm	3105	
	4.0 mm	3.4 mm	0.30 mm	0.30 mm	3105	
	7 Star					
	4.0 mm	3.0 mm	0.50 mm	0.50 mm	3105	
C	Coating Type					
	Top Skin	Bottom Skin		Paint supplier: Nippon   Spectrum   JSW   Berger Becker   PPG   Akzonobel		
	PVDF/FEVE	PE				
D	Permissible Product Tolerance					
	Size			Thickness		
	Length	Width	Bow	Squareness	Panel	Coil
	± 4.0mm	± 2.0 mm	Maximum 0.5%	Maximum ± 2.0 mm	± 0.20 mm	± 0.03 mm

\*Shade variance may vary on batch variance

\*For further queries you may contact our customer care manager at 1800 313 3770

\*AA5005 series alloy is available on request

\*Our warranties are limited to products supply only

\*For 0.50mm Thickness (7 Star) MOQ 1000 Sq.Mt

\*Viva warrants that its products are free from manufacturing defects and they are fit and suitable for usual purposes.

\*The product should be inspected prior to installation and our liability will be limited to the cost of the product only.

\*Please note: The colors displayed in this brochure are digital representations and may vary from the actual shades.

For accurate color matching, please refer to physical samples.



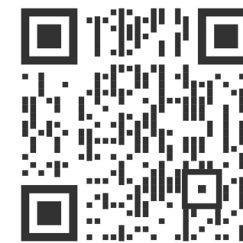
# A CLOSER LOOK TECHNICAL ASPECTS

Property	Test Method	Units	Polyethylene Core	Mineral Core (Class B)	Mineral Core (Class A2)	Aluminium Corrugated Core (Class A2)
ACP Thickness	Measurement	mm	4.0	4.0	4.0	4.0
Coil Thickness	Measurement	mm	0.3	0.5	0.5	0.5
ACP Weight	Measurement	Kg/m <sup>2</sup>	5.2	7.5	8.5	3.8
Core Density	Measurement	—	1.10	1.6	1.87	2.74
Peel Test	ASTM D 903	N/mm	Min.5	Min.7	Min.7	Min.7
ACP Tensile Strength	ASTM D 638	Mpa	Min.40	Min.40	Min.45	Min.45
ACP Yield Strength	ASTM D 638	Mpa	Min.35	Min.35	Min.40	Min.40
ACP Elongation	ASTM D 638	%	Min.5	Min.5	Min.5	Min.5
Thermal Expansion	ASTM D 696	mm/M/100°C	2.4	2.4	2.4	2.4
Heat Transmission Coefficient (U)	ASTM C 1363	W/m <sup>2</sup> K	5.52	5.53	5.53	5.53
Fire Classifications	EN 13501 - 1	-	—	Class B-s1,d0	Class A2-s1,d0	Class A2-s1,d0
Fire Rating	EN 13501 - 1	—	—	Class B	Class A2	Class A2
Sound Transmission Loss	ASTM E 90	dB	25	25	25	25
Sound Absorption Factor	ISO 354	—	0.05	0.05	0.05	0.05





# UNVEILING BRICKLYN A PALETTE OF PERFECT SHADES



Scan to  
have a look at  
our **BRICKLYN**  
**DIGITAL SHADES**





## VIVA COMPOSITE PANEL PVT. LTD.

### Head Office:

Viva Composite Panel Pvt. Ltd.,  
601, 6<sup>th</sup> Floor, A Wing, Times Square Building,  
Marol Naka, Andheri - Kurla Rd, Andheri East,  
Mumbai, Maharashtra - 400059

### Factory Address:

Survey No, 85/8, 85/9, 85/10, 68/1, 70/14,  
At Post: Khattalwada, Manekpur Road, Opp  
Poultry Farm, Near Apar Industries Ltd,  
Tal-Umbergoan, Dist - Valsad,  
Station - Sanjan, Gujarat - 396120

### Branch Offices:

Delhi | Bengaluru | Ahmedabad | Hyderabad  
| Chennai | Bhubaneshwar | Jaipur | Raipur |  
Lucknow | Udaipur | Surat | Ranchi | Kochi |  
Hubli | Indore | Pune | Nagpur | Nashik |  
Bhopal | Kolkata

### Overseas Branch

#### **Qatar**

Viva Composite Panels Trading W.L.L.  
Doha, Qatar

#### **Kuwait**

Viva Composite Panels Wholesale Co. L.L.C  
Al-Qurain, Kuwait

#### **Dubai**

Vivere Star Panel Trading L.L.C.  
Dubai, U.A.E.

### Overseas Associates

USA | UAE | South Africa | Sri Lanka | Saudi Arabia | Poland



[vivaacp.com](http://vivaacp.com)



1800 313 3770 (Toll Free)



[info@vivaacp.com](mailto:info@vivaacp.com)





PERDURAN

**VOLUME 1**  
2025-26