



**TARNISH  
METALLUM**

**2 Decades**

of Expertise in ACP

**7 Million**

m2 production  
capacity

**500+**

Customer Service  
Touchpoints

**7 State-of-Art**

Production Lines

**FR Grade**

A2, B1 and A2+

**300+**

Colored Shades

**FEVE/PVDF**

Paint Technology for  
Coil Coating

# About

**15** YEARS  
WARRANTY

ISO 9001:2015, ISO 14001:2015 and CE certified

NFPA 285 - 2019 Edition

EN13501 - 1:2018 and ASTM D1929-16

EN13823:2010 + A1:2014 | EN11925-2:2020

Viva is one of the largest Indian manufacturers of Aluminum Composite Panels. Located at Umbergaon in Gujarat, it boasts state-of-the-art Korean technology, with 7 production lines. It has a production capacity of 7 million m2 per annum. The production facility is equipped with safety measures of six sigma and solar power generators for uninterrupted production.

The "Tarnish Metallum Series" is the perfect product for someone seeking a modern look without settling for second best. Renowned for its qualities like rough finishes and resistance to mold and mildew, which makes it perfect for outdoor use! These Panels comes with PVDF/FEVE coating and are built with advanced manufacturing techniques resulting in a structure that is UV resistant while offering 15 years of warranty.





**VA-10001**

Glazed Copper

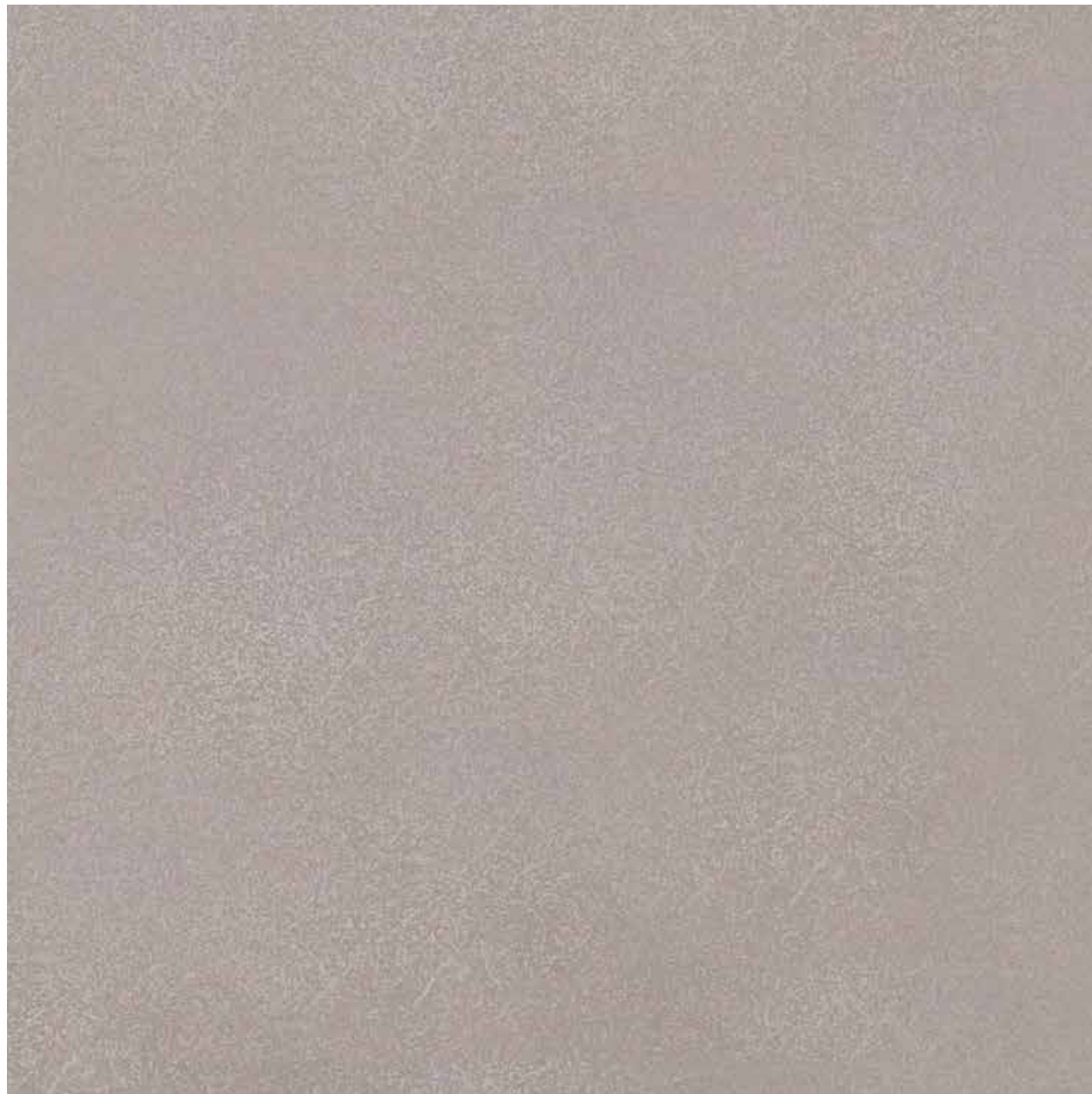




Actual Sheet Image



**VA-10001**  
Glazed Copper



**VA-10002**

Elegant Copper





Actual Sheet Image



**VA-10002**  
Elegant Copper



**VA-10003**  
Aged Copper





Actual Sheet Image



**VA-10003**  
Aged Copper



**VA-10004**

Lavish Copper Oxide





Actual Sheet Image



**VA-10004**  
Lavish Copper Oxido



**VA-10005**

Glazed Steel





Actual Sheet Image



**VA-10005**  
Glazed Steel

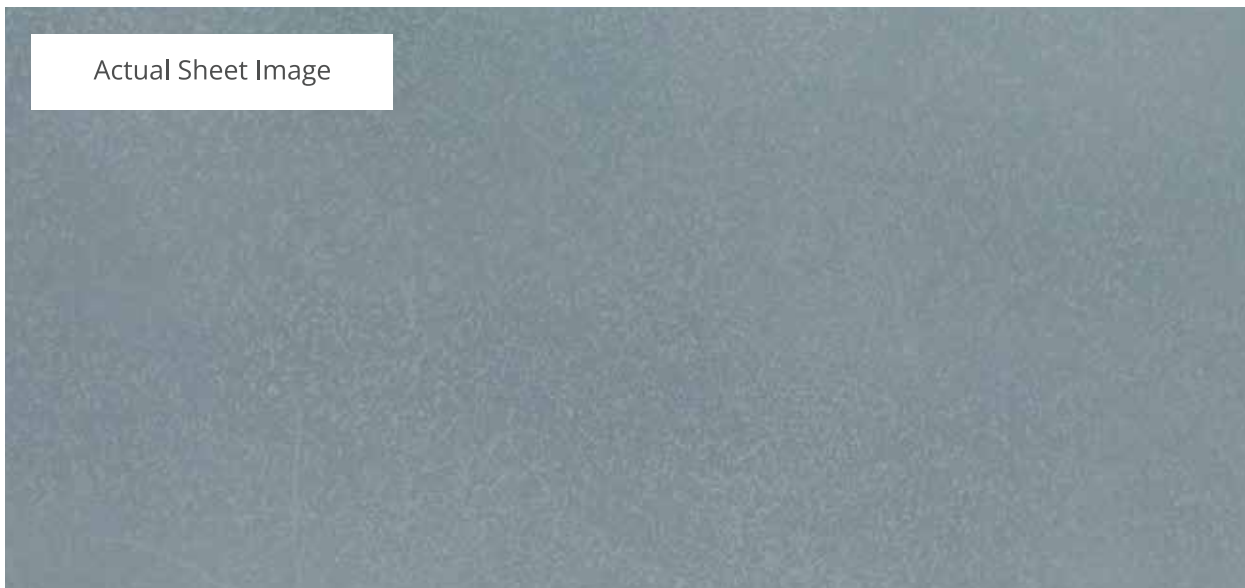


**VA-10006**  
Elegant Steel





Actual Sheet Image



**VA-10006**  
Elegant Steel



**VA-10007**

Lavish Silver Oxido

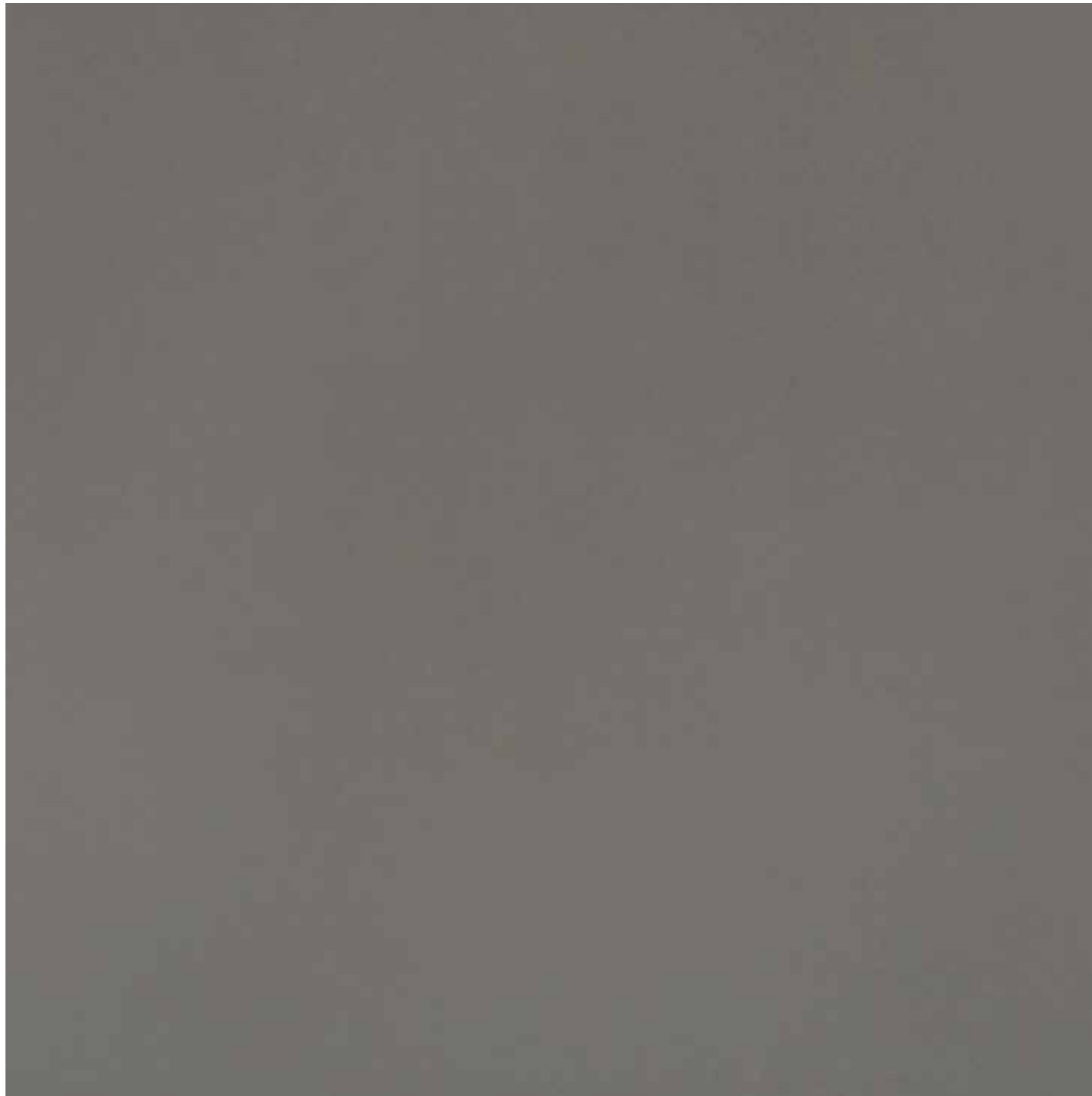




Actual Sheet Image



**VA-10007**  
Lavish Silver Oxido



**VA-10008**

Glazed Titanium





Actual Sheet Image



**VA-10008**  
Glazed Titanium



**VA-10009**

Glazed Bronze





Actual Sheet Image



**VA-10009**  
Glazed Bronze



**VA-10010**

Pre-Rusted Cor-Ten





Actual Sheet Image



**VA-10010**  
Pre-Rusted Cor-Ten



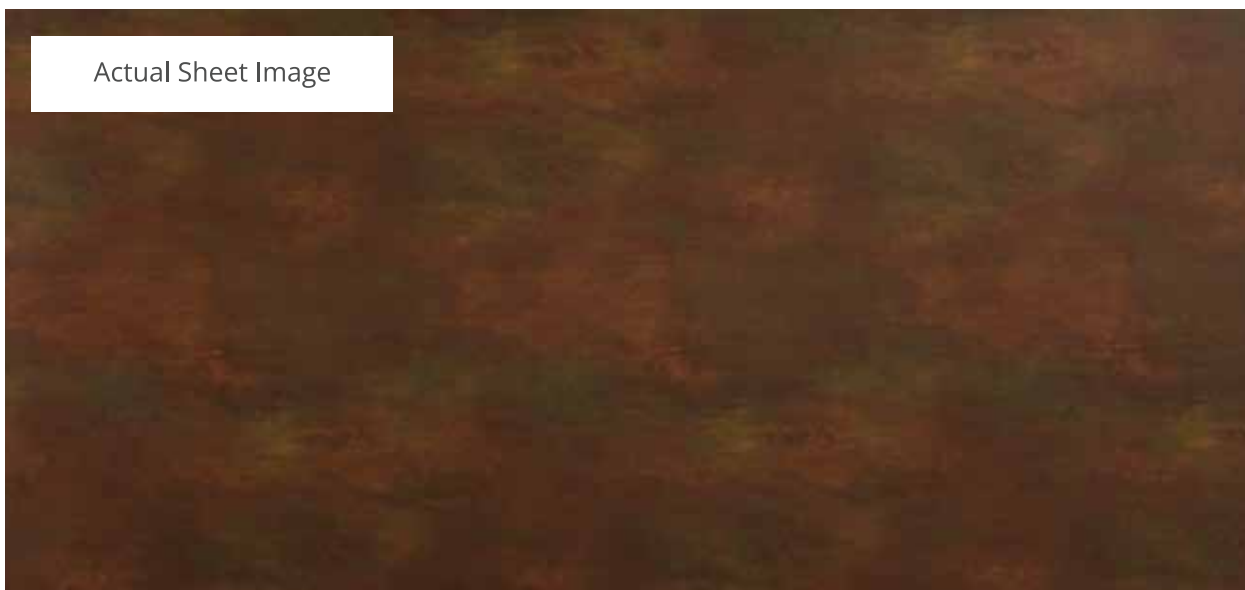
**VA-10011**

Post-Rusted Cor-Ten





Actual Sheet Image



**VA-10011**  
Post-Rusted Cor-Ten



**VA-10012**  
Verdigris





Actual Sheet Image



**VA-10012**  
Verdigris



**VA-10013**

Carbonum Steel





Actual Sheet Image



**VA-10013**  
Carbonum Steel



**VA-10014**

Rotten Wood

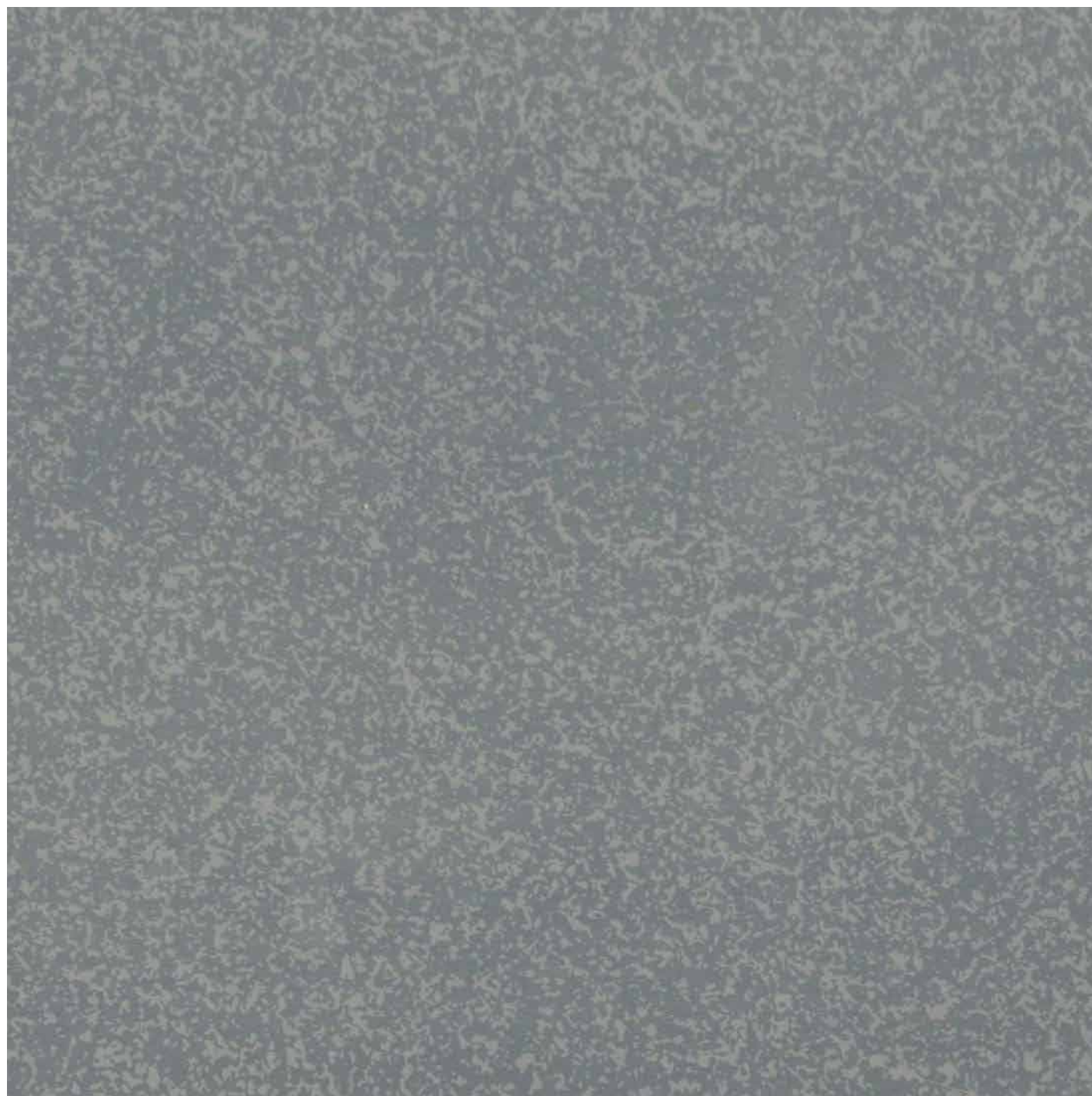




Actual Sheet Image



**VA-10014**  
Rotten Wood



**VA-10015**

Elegant Titanium





Actual Sheet Image



**VA-10015**  
Elegant Titanium



# Product Information

A	Panel Dimensions					
	Standard		2440 mm x 1220 mm		3050 mm x 1220 mm	3660 mm x 1220 mm
B	Panel Thickness (LDPE/Mineral/Aluminium Corrugated)					
	Panel		Core	Top Skin	Bottom Skin	Alloy
	3.0 mm		2.4 mm	0.30 mm	0.30 mm	3105
	4.0 mm		3.4 mm	0.30 mm	0.30 mm	3105
C	Coating Thickness (PVDF/FEVE)					
	Top Skin					Bottom Skin
	33 - 35 u (Three coat - Three Bake) / 40 u (Four coat - Four bake)					5 - 7 $\mu$
	Paint supplier : Spectrum / PPG / Nippon / Monopol / Akzonobel					
D	Permissible Product Tolerance					
	Size			Thickness		
	Length	Width	Bow	Squareness	Panel	Coil
	$\pm 4.0$ mm	$\pm 2.0$ mm	Maximum 0.5%	Maximum $\pm 2.0$ mm	$\pm 0.20$ mm	$\pm 0.03$ mm

Viva warrants that its products are free from manufacturing defects and they are fit and suitable for usual purpose. The product should be inspected prior to installation and our liability will be limited to the cost of the product only.




# Technical Details

Property	Test Method	Units	Polyethylene Core	Mineral Core (Class B)	Mineral Core (Class A2)	Aluminium Corrugated Core (Class A2)
ACP Thickness	Measurement	mm	4.0	4.0	4.0	4.0
Coil Thickness	Measurement	mm	0.5	0.5	0.5	0.5
ACP Weight	Measurement	Kg/m2	5.8	7.5	8.0	3.8
Core Density	Measurement	-	1.10	1.6	1.87	2.74
Peel Test	ASTM D 903	N/mm	Min.8	Min.8	Min.8	Min.8
ACP Tensile Strength	ASTM D 638	Mpa	Min.40	Min.40	Min.45	Min.45
ACP Yield Strength	ASTM D 638	Mpa	Min.35	Min.35	Min.40	Min.40
ACP Elongation	ASTM D 638	%	Min.5	Min.5	Min.5	Min.5
Thermal Expansion	ASTM D 696	mm/M/100° C	2.4	2.4	2.4	2.4
Heat Transmission Coefficient (U)	ASTM C 1363	W/m2K	5.52	5.53	5.53	5.53
Fire Classification	EN 13501 - 1	-	-	Class B-s1-d0	Class A2 - s1- d0	Class A2 - s1 - d0
Fire Rating	DIN 4102	-	-	Class B1	Class A2	Class A2
Sound Transmission Loss	ASTM E 90	dB	25	25	25	25
Sound Absorption Factor	ISO 354	-	0.05	0.05	0.05	0.05

# VIVA COMPOSITE PANEL PVT. LTD.

## Head Office

Viva Composite Panel Pvt. Ltd., 601, 6th Floor, A-Wing, Times Square Building, Marol Naka,  
Andheri - Kurla Rd, Andheri East, Mumbai, Maharashtra - 400059

 022 28500150/51/52

## Factory Address

Survey No, 85/8, 85/9, 85/10, 68/1, 70/14, At Post : Khattalwada, Manekpur Road, Opp. Poultry  
Farm, Near Apar Industries Ltd., Tal-Umbergaon, Dist-Valsad, Station-Sanjan, Gujarat - 396120


## Branch Offices

Delhi | Bengaluru | Ahmedabad | Hyderabad | Chennai | Bhubaneshwar  
| Jaipur | Raipur | Lucknow | Udaipur | Surat | Ranchi | Kochi




 vivaacps

 vivaacps

 1800 313 3770 (Toll Free)

 vivaacps

 vivaacp.com