

# ICE WIZARD™

## ICE CUBE MAKER

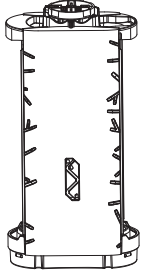
For Additional instructions and Tips  
visit, [www.IceWizardTips.com](http://www.IceWizardTips.com)



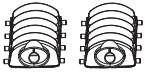
## Instruction Manual



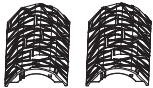
# Contents



Main Body (B) (X1)



Ice Trays (C) (X2)



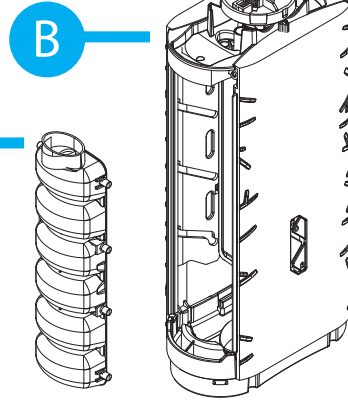
Clear Side Pane (D) (X2)



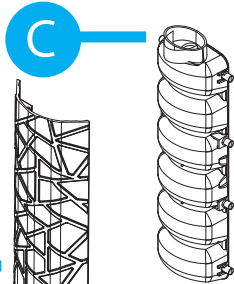
Bottom Cover (E) (X1)



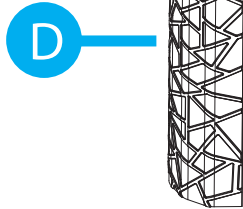
A



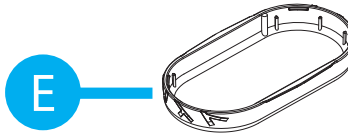
B



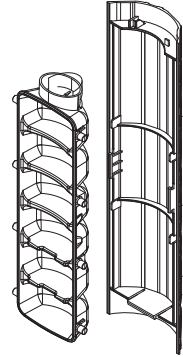
C



D



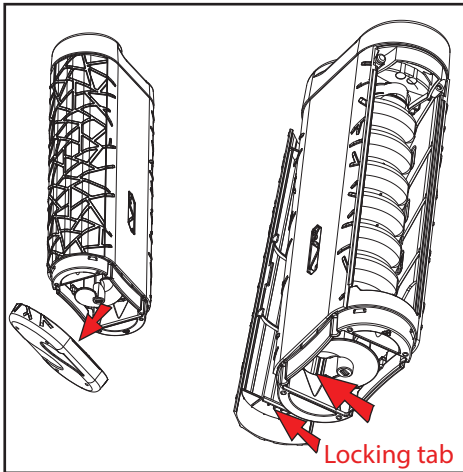
E



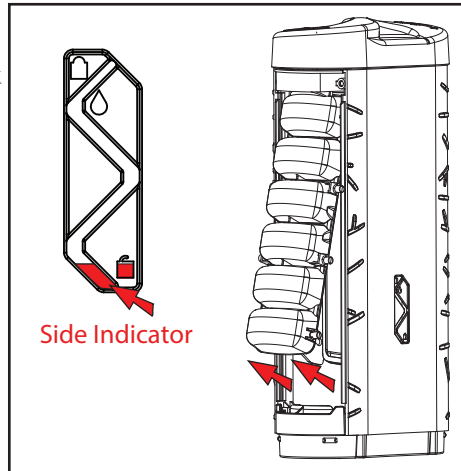
# Important Safety Instructions

- Read all instructions.
- Do not over fill the unit.
- Hand wash only.
- Make sure to use the fill line indicators when using the Ice Wizard™. Misuse can lead to leaking and damage of the product.

## Care and Maintenance



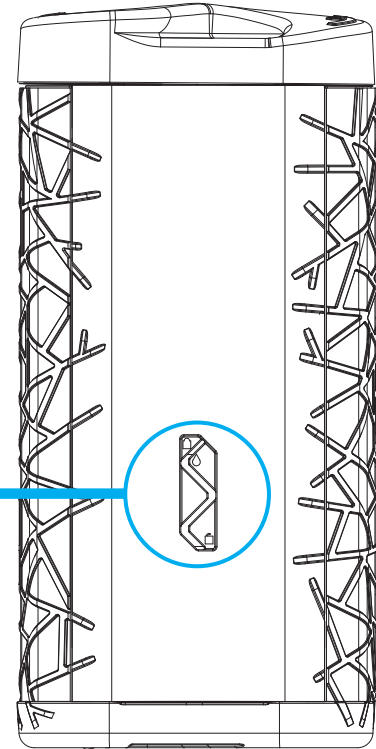
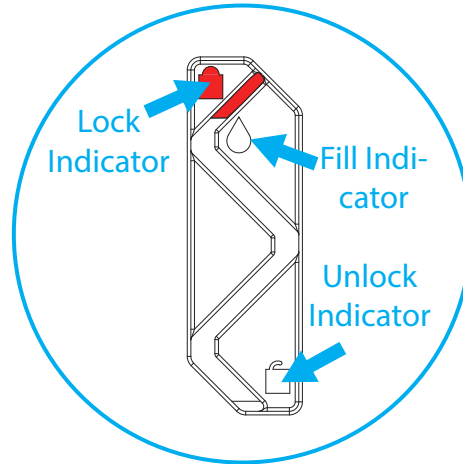
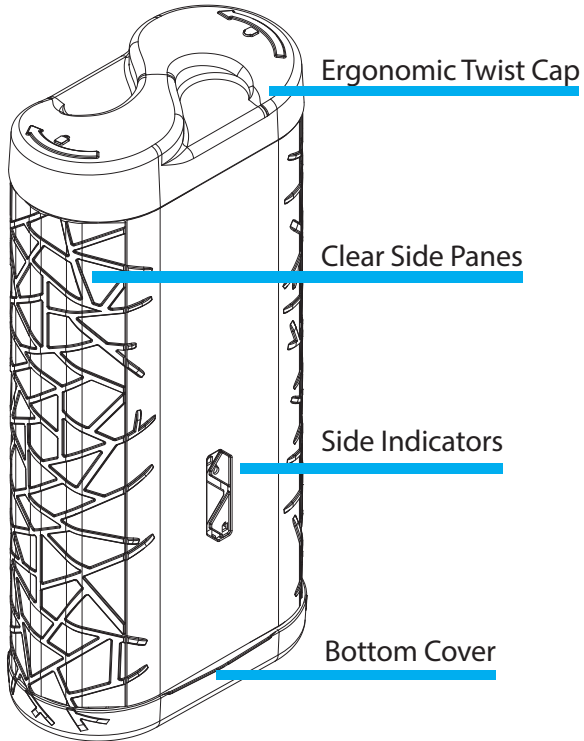
1) Remove the Bottom Cover (E). Once removed look into the opening at the bottom of Main Body (B). Find the clear locking tab holding the Clear Side Pane (D) in place. Press up and out to release the Clear Side Pane (D). Repeat the same process for the opposite side.



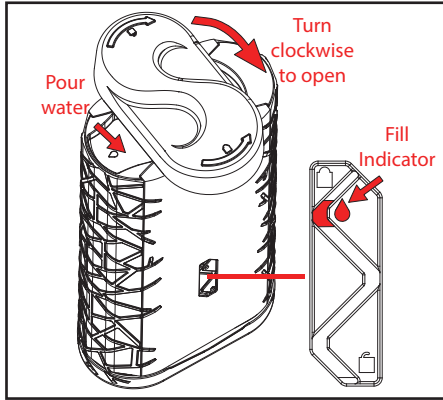
2) Rotate the Top Twist Cap (A) clockwise until the orange line on the indicator is aligned with the unlock symbol on the Main Body (B). Pull the Ice Tray (C) up and out. Repeat the process on the opposite side.

Hand wash Ice Trays (C) with soap and warm water.

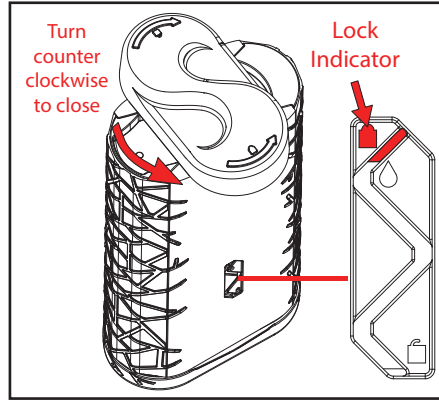
# Features



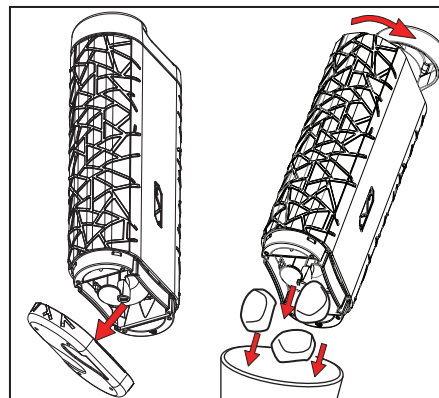
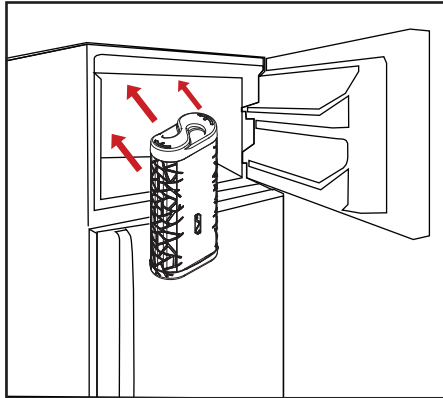
# Using your Ice Wizard™



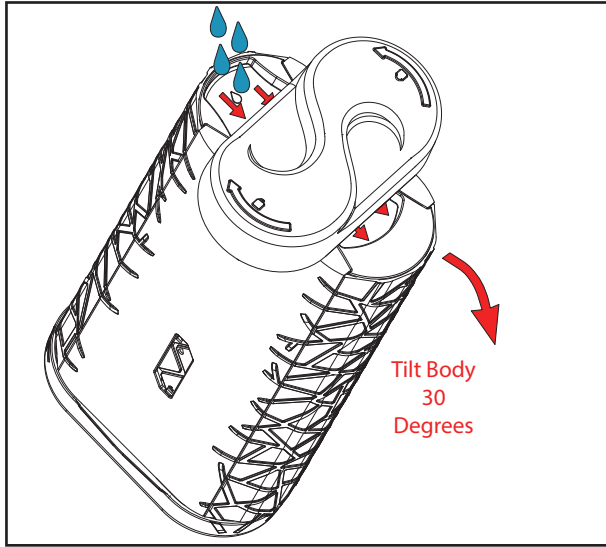
1) Turn the Top Twist Cap (A) until the red line is on the Fill Indicator. Pour water slowly into the top of the Main Body (B). Turn unit upside down to remove any excess water under the Top Twist Cap (A).



2) Once the Ice Wizard™ is filled with water, turn Twist Cap (A) counter-clockwise until the red line is on the Lock Indicator.



# Pro Tip



If you are experiencing difficulty filling both ice trays evenly, tilt the Ice Wizard™ 30 degrees opposite of the fill indicator, and start filling. Once the water starts overflowing the top, turn the Ice Wizard™ back to the vertical position and continue filling until the water starts to cover the water drop symbol.

5 Once filled, twist the cap to the Closed position and shake out any excess water.

# ICE WIZARD™

## ICE CUBE MAKER

**ALLSTAR**  
INNOVATIONS™

©2020 ALLSTAR INNOVATIONS

Ice Wizard™ is a trademark of ALLSTAR INNOVATIONS

Distributed by ALLSTAR INNOVATIONS

Hawethorne, NY 10532

Made in the USA.

Patent Pending.













