

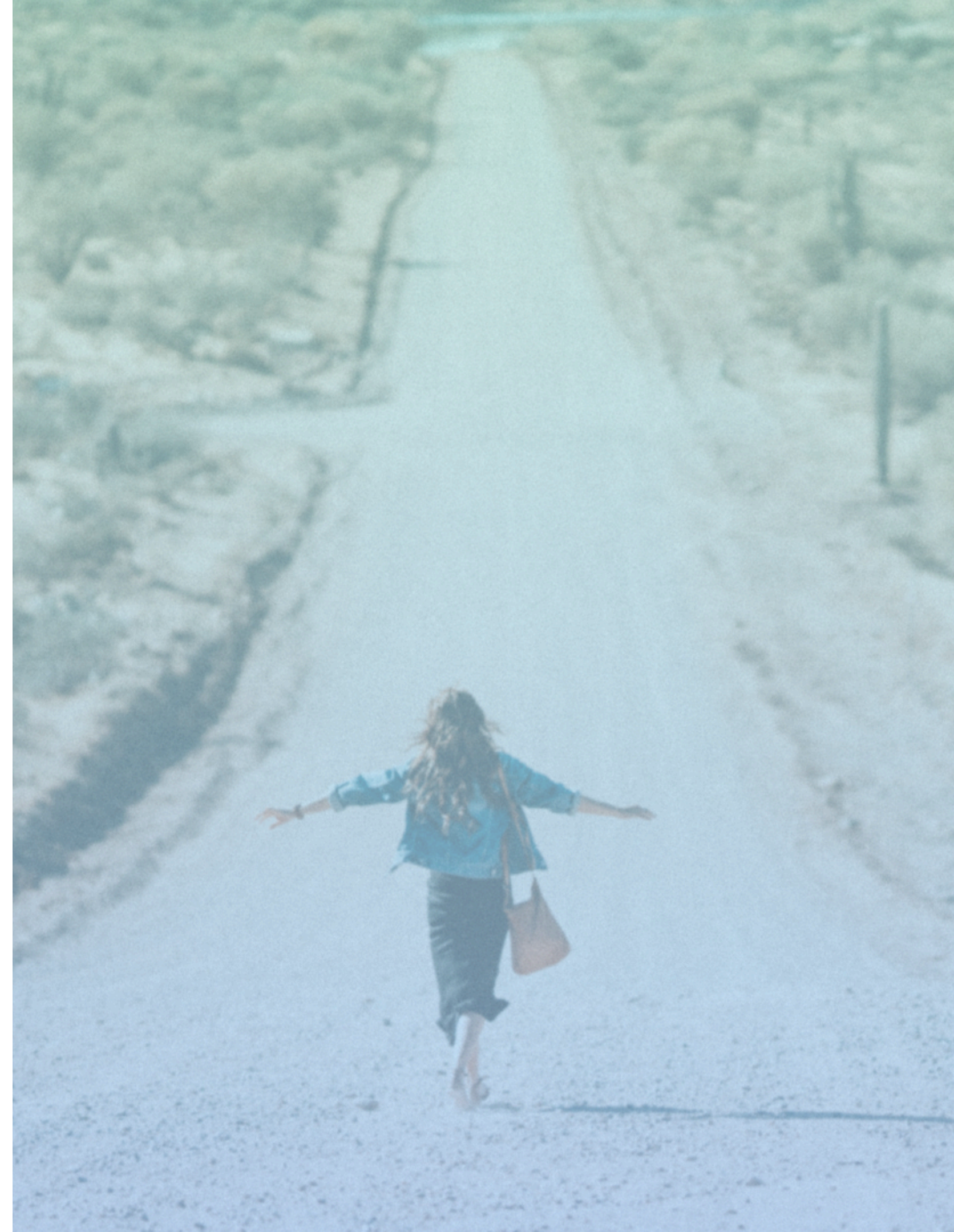
# Your Journey

---

## Calm, Supported Path for Every Stage of Business Growth

Starting and growing a business isn't linear; needs and confidence fluctuate, and timing matters. Female Founder Finance is here to support you at every stage of your journey, offering a calm partnership that adapts to your evolving needs and aspirations as a founder.

You may move forward, pause, or revisit any stage, and that's completely normal.



# Idea & Early Thinking

---

Exploring ideas and validating demand without the pressure to decide quickly

As a founder, navigating the early stages of your business can be **overwhelming**. It's essential to explore your ideas, validate demand, and consider timing without the weight of urgency. Female Founder Finance is here to support you through this reflective process, fostering clarity and confidence as you prepare for the next steps.



# Preparation & Readiness

---

## Building Confidence and Understanding Options for Your Business Journey

At this crucial stage, it's essential to **understand your options** and build confidence in your business decisions. Female Founder Finance supports you in preparing key documents and making informed choices about funding. This clarity empowers you to move forward with assurance, ensuring a solid foundation for your business growth.



# Funding Pathway

---

Selecting the right funding options tailored to your unique journey

Securing the right funding is critical for your business growth. Female Founder Finance guides you through **appropriate funding preparations** and helps you navigate potential pitfalls. It's important to view funding as a supportive tool, not a requirement, ensuring you make informed decisions that align with your goals.

Some founders move into a funding pathway quickly; others return to preparation or choose a different route altogether.



# Business Set-Up

---

Establishing a strong foundation for your entrepreneurial journey

In this essential phase, focus on operational stability. Understanding **bookkeeping**, tax basics, and legal structures will minimize surprises and ensure smooth operations. Female Founder Finance is here to guide you through these foundational elements, reinforcing your confidence and helping you make informed decisions for your business future.



# Stability & Growth

---

## Navigating the evolving landscape of your business journey post-launch

As your business begins trading, questions and decisions may evolve. Female Founder Finance remains by your side, offering clarity and guidance. Emphasizing ongoing support, we encourage you to embrace change and uncertainties, reinforcing that our partnership does not have an expiration date.

There is no end point to this journey, only changing needs.



# Get in touch with Female Founder Finance

WEBSITE

[www.femalefounder.finance](http://www.femalefounder.finance)

---

EMAIL

[contact@femalefounder.finance](mailto:contact@femalefounder.finance)

---