

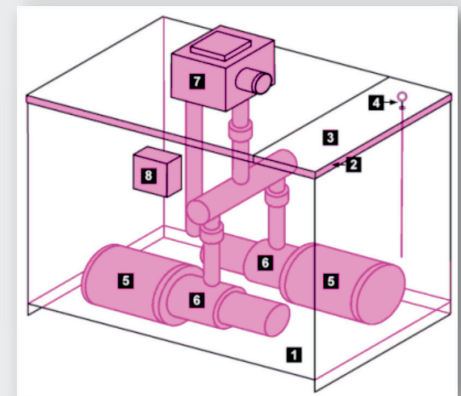
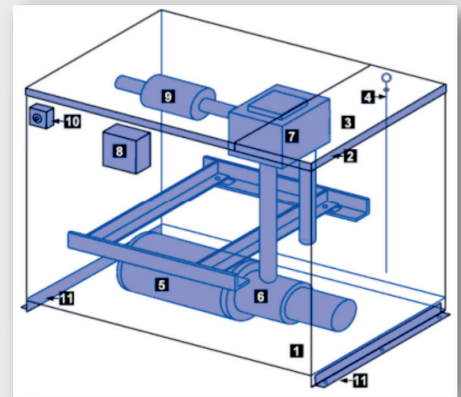
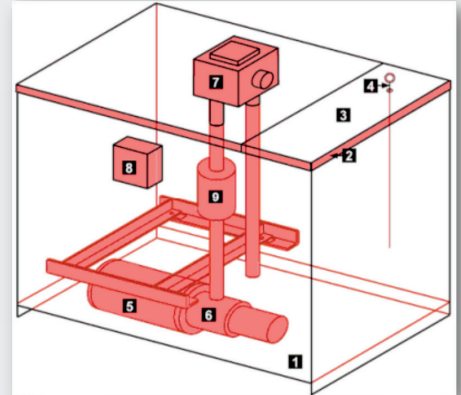
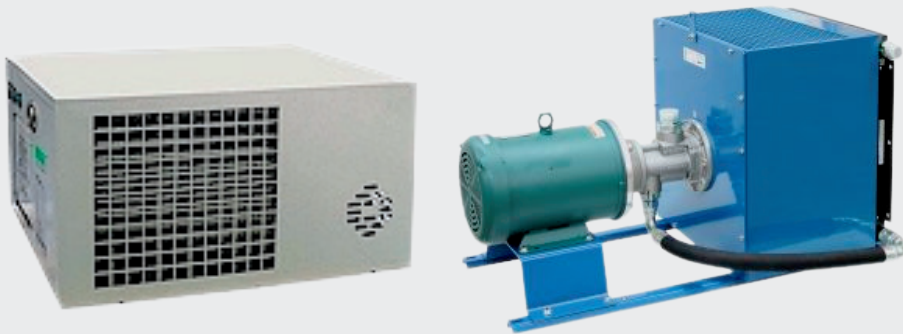


# HYDRAULIC ELEVATOR SUBMERSIBLE POWER UNITS & ACCESSORIES

## ENGINEERED FOR MAXIMUM PERFORMANCE

Experience the convenience of low noise operation and easy maintenance accessibility with Access Elevator & Escalator Parts' hydraulic elevator submersible power units.

- CSA Approved valve & motor
- Top mounted valve for ease of adjustment
- Pumps range from 32-270 GPM
- Motors range from 10 HP to 70 HP
- Positive displacement screw pump
- Direct coupled pump and motor submerged in oil
- Low noise operation with anti-vibrations mounts
- Valve pressure gauge quick connector H1-63
- Adjustable oil thermostat 85-230 °F
- Seismic brackets
- Customized to meet nearly any special project



### EXAMPLES

- A- VALVE OUTSIDE, JACK TO RIGHT, MUFFLER INSIDE
- B- VALVE & MUFFLER INSIDE, JACK TO LEFT, SEISMIC BRACKETS, OIL THERMOSTAT
- C- VALVE OUTSIDE, JACK TO RIGHT, DUAL PUMP/MOTOR

- 1- POWER UNIT TANK -2- TANK COVER WITH 5/8" DOWNWARD LIP -3- ACCESS COVER
- 4- OIL DIPSTICK -5- SUBMERSIBLE MOTOR -6- SUBMERSIBLE PUMP -7- VALVE
- 8- ELECTRICAL BOX -9- MUFFLER -10- OIL THERMOSTAT -11- SEISMIC BRACKETS

Access has a large inventory of components, which generally allows power unit fabrication within 3-5 days. Our power units are designed and manufactured to conform to ASME A17.1. Nationwide shipping available.

1005 1023

**ACCESS ELEVATOR &  
ESCALATOR SUPPLY**



(800) 266-8654



1302 65th Street  
Emeryville, CA 94608

4301 S Valley View Blvd.  
Las Vegas, NV 89103

[www.aesupply.com](http://www.aesupply.com) | [sales@aesupply.com](mailto:sales@aesupply.com)

**ACCESS IS ALWAYS AROUND**