



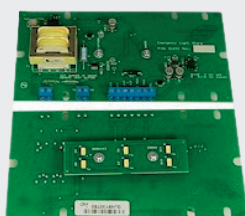
EMERGENCY LIGHTS

Designed for use in:
New construction
Modernization

Direct replacement for existing units

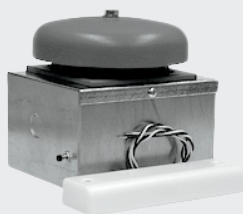
Meeting both lighting and alarm codes ANSI A17.1, these systems contain maintenance-free nickel cadmium batteries, and solid state circuitry with accessory terminals for use with 6VDC alarm bell.

MODEL EMLK, UNIVERSAL LED KIT



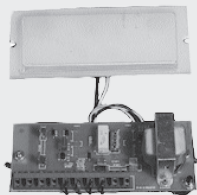
- Replaces Monitor, Adams, PTL, GAL, EPCO, Innovation, Nylube, Mathis and many others
- 6 high efficiency white LEDs
- 120/220VAC power circuit
- 6/12VDC alarm bell (optional) can be wired into terminal strip
- 12V 1.2AH lead-acid battery included

MODEL ELSL-2



- Remote trimline model
- Car top mount power supply with alarm bell
- 18 gauge galvanized steel box
- External test switch
- Remote light source 7" x 1-7/8" x 1" (can be mounted in car above operating panel or ceiling)
- CSA approved

MODEL ELPB-1



- Mounts inside car operating panel
- Power pack, light source, and rectangular lens included
- For OEM and replacement use
- CSA approved

MODEL ELSL-ACBG

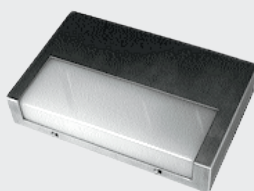


- Remote trimline model
- Similar to model ELSL-2 with ground fault circuit interrupter



MODEL ELPB-2

- Mounts to back of cover plate, 3" dia. round lens
- For OEM, and replacement use



MODEL ELWS-2

- Wall surface mount
- Brushed stainless steel finish, 5-1/2" x 8-1/2" x 1-3/4"
- Alarm bell (optional) can be wired into terminal strip
- CSA approved

MODEL ELWS-2B

- Same as ELWS-2 with a bronze electroplated finish



MODEL ELCM-1

- Ceiling mount
- Self-contained unit
- White acrylic lens
- Alarm bell (optional) can be wired into terminal strip
- 6-5/16" x 5-1/4" x 1-13/16"

ACCESS ELEVATOR & ESCALATOR SUPPLY



(800) 266-8654



1302 65th Street

Emeryville, CA 94608

4301 S Valley View Blvd.

Las Vegas, NV 89103

www.aesupply.com | sales@aesupply.com

ACCESS IS ALWAYS AROUND