



AS-7M108N-HC 420W~450W

MONOCRYSTALLINE MODULE

ADVANCED PERFORMANCE & PROVEN ADVANTAGES

- High module conversion efficiency up to 23.04% by using innovative N-type TOPCon cell technology.
- Extremely low LID (light induced degradation) and low annual power degradation ensure higher energy yield during the module's lifetime.
- Low temperature coefficient and excellent performance under high temperature and low light conditions.
- Robust aluminum frame ensures the modules to withstand wind loads up to 2400Pa and snow loads up to 5400Pa.
- High reliability against extreme environmental conditions (passing salt mist, ammonia and hail tests).
- Potential induced degradation (PID) resistance.

CERTIFICATIONS

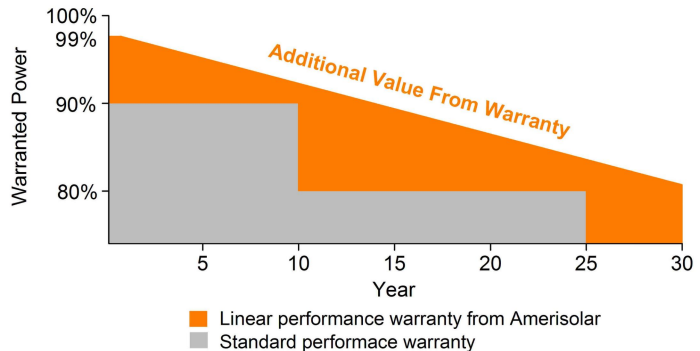


- IEC 61215, IEC 61730, CE
- ISO 9001:2015: Quality management system
- ISO 14001:2015: Environmental management system
- ISO 45001:2018: Occupational health and safety management system

SPECIAL WARRANTY

- 20 years product warranty
- 30 years linear power output warranty

Passionately
committed to
delivering innovative
energy solution



ELECTRICAL CHARACTERISTICS AT STC

Maximum Power (P_{max})	420W	425W	430W	435W	440W	445W	450W
Open Circuit Voltage (V_{OC})	38.0V	38.2V	38.4V	38.6V	38.8V	39.0V	39.2V
Short Circuit Current (I_{SC})	13.94A	14.00A	14.06A	14.12A	14.18A	14.24A	14.30A
Voltage at Maximum Power (V_{mp})	31.8V	32.0V	32.2V	32.4V	32.6V	32.8V	33.0V
Current at Maximum Power (I_{mp})	13.21A	13.29A	13.36A	13.43A	13.50A	13.57A	13.64A
Module Efficiency (%)	21.51	21.76	22.02	22.28	22.53	22.79	23.04
Operating Temperature	-40°C to +85°C						
Maximum System Voltage	1000V DC/1500V DC						
Fire Resistance Rating	Class C						
Maximum Series Fuse Rating	25A						



STC: Irradiance 1000W/m², Cell temperature 25°C, AM1.5; Tolerance of P_{max}: ±3%; Measurement Tolerance: ±3%

ELECTRICAL CHARACTERISTICS AT NOCT

Maximum Power (P_{max})	316W	320W	324W	328W	332W	336W	340W
Open Circuit Voltage (V_{OC})	36.1V	36.3V	36.5V	36.7V	36.9V	37.1V	37.3V
Short Circuit Current (I_{SC})	11.29A	11.34A	11.39A	11.44A	11.49A	11.54A	11.59A
Voltage at Maximum Power (V_{mp})	29.9V	30.1V	30.3V	30.5V	30.7V	30.9V	31.1V
Current at Maximum Power (I_{mp})	10.57A	10.64A	10.70A	10.75A	10.82A	10.88A	10.94A

NOCT: Irradiance 800W/m², Ambient temperature 20°C, Wind Speed 1 m/s

MECHANICAL CHARACTERISTICS

Cell type	Monocrystalline N-type
Number of cells	108 (6x18)
Module dimensions	1722x1134x30mm
Weight	20.5kg
Front cover	3.2mm tempered glass with AR coating
Frame	Anodized aluminum alloy
Junction box	IP68, 3 diodes
Cable	4mm ² , 300mm; Customized Length
Connector	MC4 or MC4 compatible

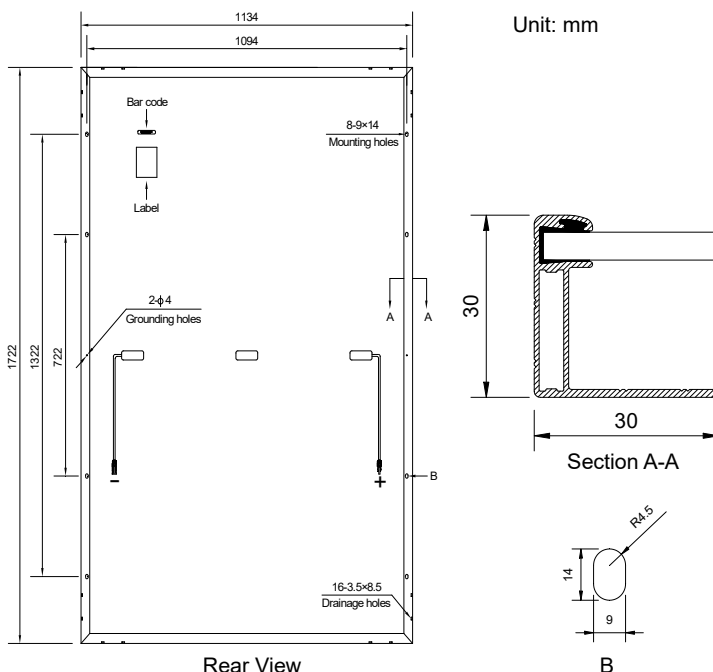
TEMPERATURE CHARACTERISTICS

Nominal Operating Cell Temperature (NOCT)	43°C±2°C
Temperature Coefficients of P_{max}	-0.30%/°C
Temperature Coefficients of V_{OC}	-0.25%/°C
Temperature Coefficients of I_{SC}	0.045%/°C

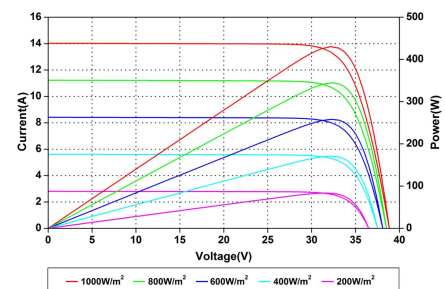
PACKAGING

Standard packaging	36pcs/pallet
Module quantity per 20' container	216pcs
Module quantity per 40' container	936pcs (HQ)

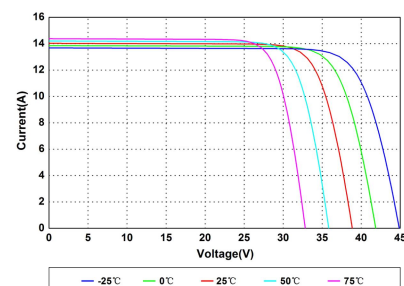
ENGINEERING DRAWINGS



IV CURVES



Current-Voltage and Power-Voltage Curves at Different Irradiances



Current-Voltage Curves at Different Temperatures

Specifications in this datasheet are subject to change without prior notice.