



HUGHES REAL ESTATE GROUP OF SILVERCREEK REALTY GROUP

# TREASURE VALLEY

## SEASONAL ACTIVITIES GUIDE

2024 SUMMER EDITION







BOISE | MERIDIAN | EAGLE | NAMPA | CALDWELL | KUNA | MIDDLETON | STAR  
EMMETT | GARDEN CITY | MOUNTAIN HOME

**TREASURE VALLEY SEASONAL ACTIVITIES GUIDE | 2024 SPRING EDITION**

*Cover photo - Deadwood Reservoir in the Boise National Forest by Kevin Hughes*

CREATIVE & DESIGN **Betty Foley**

PHOTOS **Kevin Hughes  
Karen Hughes  
Stock Photos**

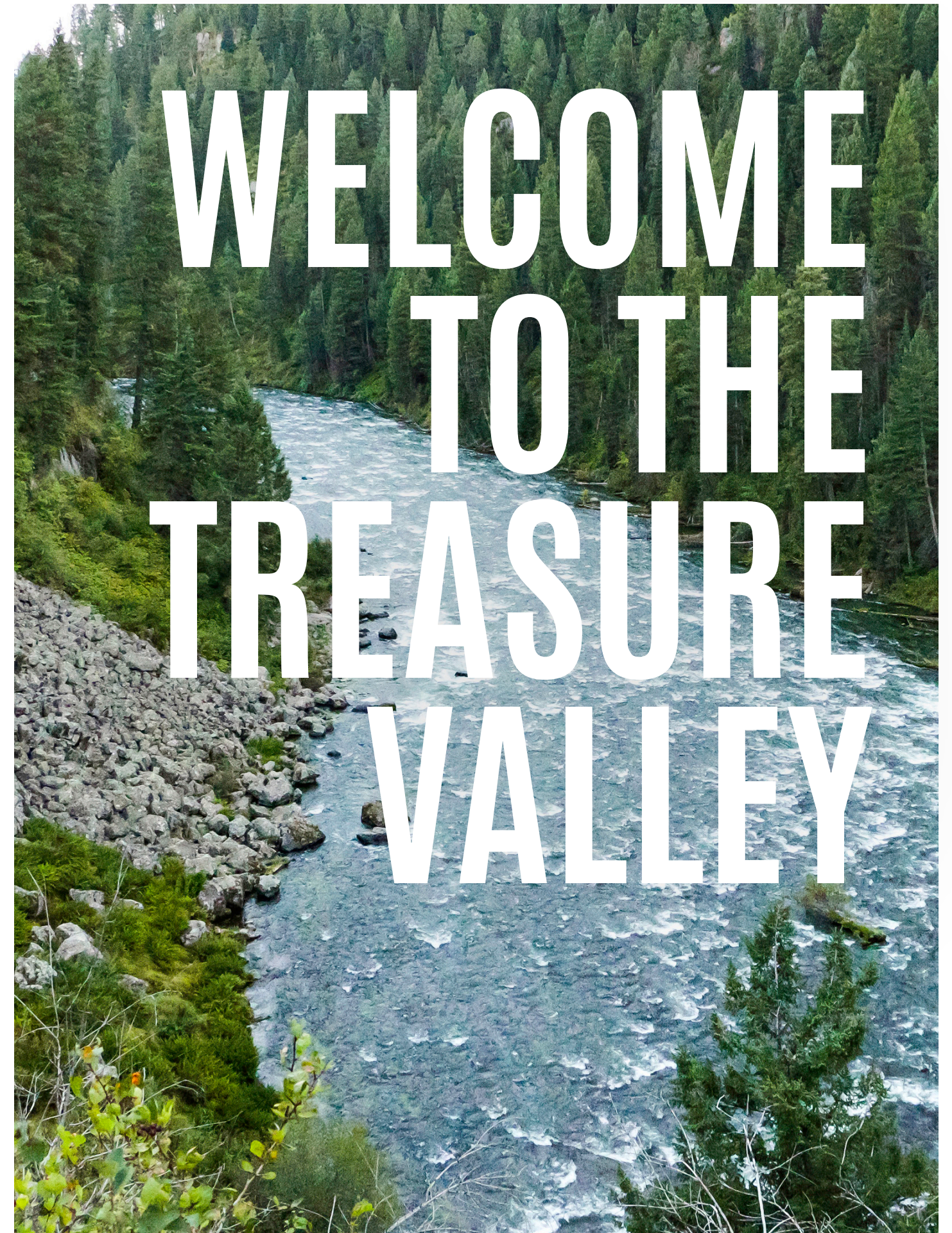
PUBLISHED **June 1, 2024**

**HUGHES**  
REAL ESTATE GROUP  
*of* **Silvercreek**  
REALTY GROUP

827 S BRIDGEWAY PLACE, EAGLE, ID 83616  
208.571.7145 | [HughesGroup@BuyIdahoRealEstate.com](mailto:HughesGroup@BuyIdahoRealEstate.com)

*A special thanks to the REALTORS® of Hughes Real Estate Group of Silvercreek Realty Group*

*Please note that all dates, location and times are subject to change. Hughes Real Estate Group and Silvercreek Realty Group are not affiliated with nor sponsors of any businesses or events listed in this guide.*







|    |                                 |
|----|---------------------------------|
| 18 | FIRST THURSDAYS                 |
| 19 | INDULGE BOISE                   |
| 20 | SHAKESPEARE FESTIVAL            |
| 21 | EMMETT CHERRY FESTIVAL          |
| 22 | BOTANICAL GARDEN MUSIC SERIES   |
| 23 | MOVIES IN THE PARK              |
| 24 | BEER & BACON                    |
| 25 | BOISE MUSIC FESTIVAL            |
| 26 | MERIDIAN FINE ART               |
| 27 | 4TH OF JULY FIREWORKS           |
| 28 | LAVENDER HARVEST FESTIVAL       |
| 29 | SHOW ME REPTILES & EXOTICS      |
| 30 | WESTERN IDAHO FAIR              |
| 31 | SPIRIT OF BOISE BALLOON CLASSIC |
| 32 | CASTING A LINE                  |
| 36 | FARMERS MARKETS                 |
| 38 | DISC GOLF                       |
| 40 | MOUNTAIN BIKING                 |
| 42 | BOISE PARKS                     |
| 44 | TREASURE VALLEY GYMS            |
| 46 | RESTAURANTS                     |
| 48 | COFFEE SHOPS                    |
| 50 | BREWERIES                       |
| 52 | WINERIES                        |

*\*Please note that event dates are subject to change  
Hughes Real Estate Group & Silvercreek Realty Group are  
not affiliated with nor sponsors of any of the events or  
businesses listed in this Activity Guide.*

# SUMMER 2024 FEATURES





## CLIMATE .....

Boise has a semi-arid continental climate with four distinct seasons. Boise experiences hot and dry summers with an average high of 91°F in July and an average low of 60°F. Winters are moderately cold with a December average high of 38°F and an average low of 24°F. Boise, on average, has 19 inches of snowfall throughout the winter months. Fall is typically brief, with the warm summer weather often drifting into the fall months. Spring is a more gradual transition in Boise with cold winter weather reappearing when you least expect it. The average amount of rainfall in Boise is 11.6 inches a year with most falling on warmer winter days and into the spring months.

## SCHOOL DISTRICT .....

The Boise Metro Area encompasses two school districts: West Ada School District and the Boise Independent School District. Combined the two public school districts include 18 high schools, 21 junior high and middle schools and 67 grade schools.

## POST-SECONDARY SCHOOLS .....

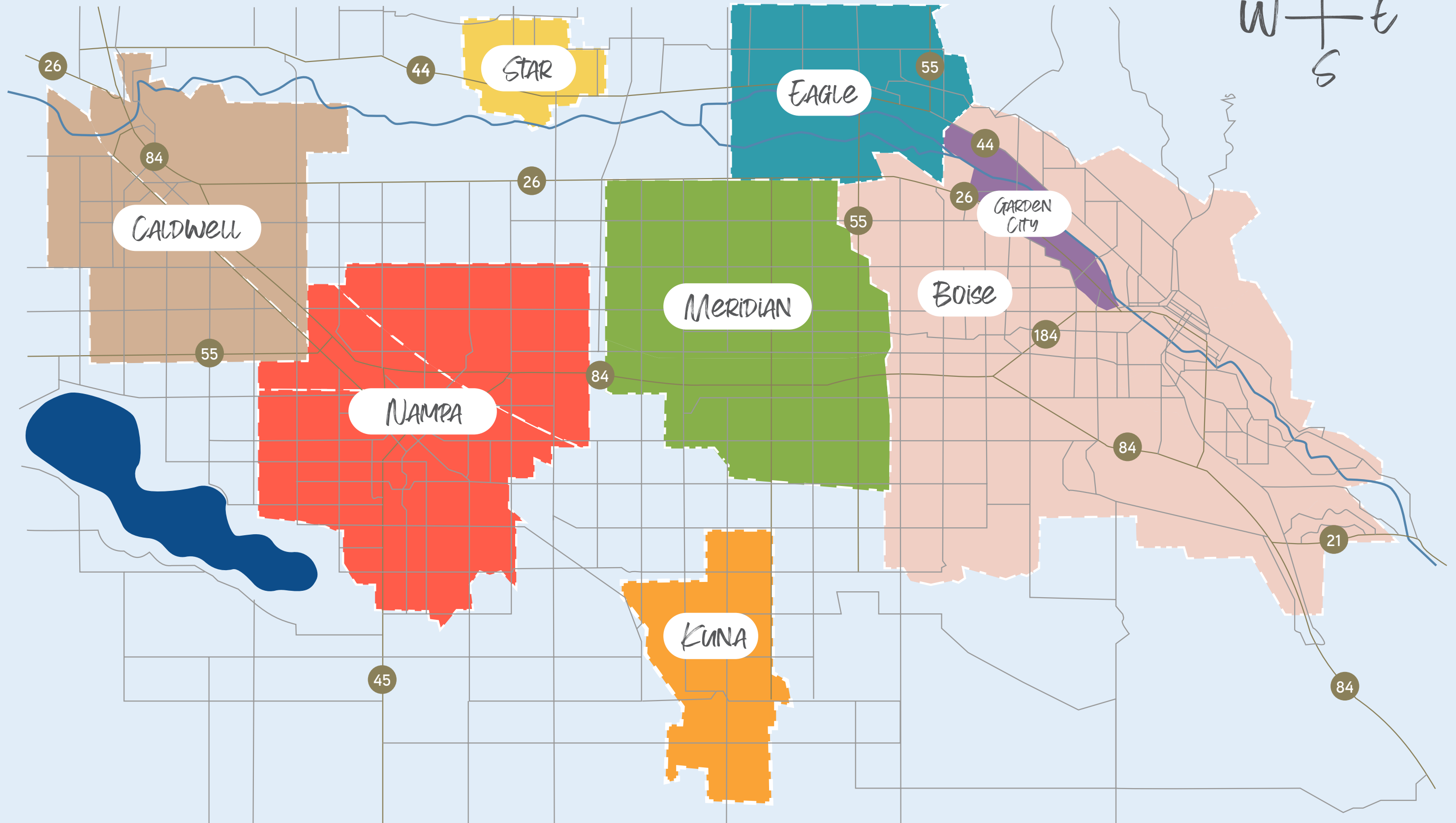
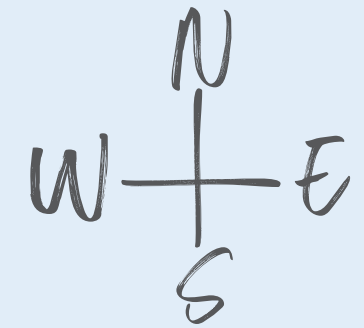
Post-secondary educational options in Boise include Boise State University (BSU) and a wide range of technical schools. The University of Idaho (UI), Idaho State University (ISU) and Northwest Nazarene University (NNU) each maintain a satellite campus in Boise. University of Idaho College of Law hosts second and third year students at its Boise campus and NNU hosts graduate students at its Boise campus.

## TOP EMPLOYERS TO WORK FOR .....

1. Micron Technology
2. Idaho Power
3. Healthwise
4. Albertsons Companies
5. St. Luke's Health System
6. J.R. Simplot
7. Chf Home Furnishings
8. US Ecology
9. Albertsons
10. Boise Cascade



# TREASURE VALLEY MAP







# TREASURE VALLEY COMMUNITIES

## BOISE

The city of Boise is nestled in the Treasure Valley alongside the rolling foothills of the Boise Mountains. Known as the “City of Trees,” Boise is remarkably beautiful and boasts abundant area tree life complemented by the Boise River. Boise is known as a hot spot for recreationalists & outdoor adventurers alike and tops the list for ideal destinations accompanied by a slower paced lifestyle. The city of Boise attracts a diverse group of residents with a blend of outdoor activities, entertainment and business opportunities in technology, agriculture, healthcare, and industry. In addition, Boise also holds the title for the “Forbes 25 Best Places To Retire in 2019,” boldly ranking in at #3.

Boise, the capital city of Idaho, is a business development with a strong history of economic growth. Boise is noted as being “the best-kept secret in the Pacific Northwest” by USA Today and continues to raise the bar for economic achievements. Some of the area’s largest employers include Micron Inc., St. Luke’s Health Systems, Saint Alphonsus Health System, Wal-Mart Associates Inc, Albertsons, LLC, HP Inc, J.R. Simplot Company, Fred Meyer, Idaho Power Company, Wells Fargo Bank, N.A., Citi Corp, McDonald’s, Ataraxis, Inc, Blue Cross of Idaho, DirecTV, Jacksons Food Stores, YMCA, Scentsy, Inc, Xerox/WDS Global, Teleperformance, Hewlett Packard Enterprise Services, Sorrento Lactalis, Costco Wholesale Corp, CenturyLink, Amalgamated Sugar Company, Plexus Corp, Sykes, CTI SSI Food Service, and West Valley Medical Center.

Combine a lower crime rate with a strong business-friendly economy and the foundation for a truly remarkable community has been set. The heart of Boise is its tranquil atmosphere, stunning landscapes, and the culture that it creates. It has been said that what makes Boise the ideal destination is that it becomes more appealing the longer residents stick around. With so many opportunities for things to do and places to go, that statement encapsulates the core of Boise and what it means to live here.

## EAGLE

From its beautifully diverse landscapes of plush tree-lined riverside beaches to the remote desert canyons that lie just beyond the foothills, the City of Eagle is distinctly beautiful. Find this community highly desirable for many reasons beyond its stunning landscapes. One of Eagle’s commonly unknown hidden treasures is that it shares a similar land size as its neighbor, the City of Meridian, though remains a smaller community with nearly one third the population.

Eagle offers the ideal mix of an established community with a fine selection of dining options, a museum, boutiques & shops, an arcade, local parks, as well as area trails and pathways. Complimented by its ideal blend of land use, the City of Eagle





boasts a remarkable selection of home styles and living accommodations. Discover the lifestyle that suits you best from riverside condos & flats to homes in the countryside, waterside or golf course living and a bit of everything in between. Escape to your very own in town retreat for a lifetime of memories.

Whether heading into town for a bite to eat, a day at the river, or an evening of entertainment, find countless indoor and outdoor activity opportunities within minutes. Living in the City of Eagle also proves beneficial in its relatively quick access to the bigger city amenities of the City of Boise, as well as straightforward access ideal for getting out of town towards the mountains. Whatever you enjoy, there is something in the City of Eagle for everyone. Check it out for yourself!

# MERIDIAN

The City of Meridian sits as the heart of the Treasure Valley, nestled amid the valley's largest cities. Discover all that the City of Meridian has to offer from dining options to shopping opportunities as well as being centrally located for optimal commute times. Meridian is home to a plethora of community parks and outdoor activities, in addition to its strong healthcare presence, job opportunities, and endless entertainment options. There is so much to love when you choose to make Meridian home. The city of Meridian proves again and again to boast the ideal blend of amenities.

What are some of the top reasons people consider a move to Meridian, Idaho? Whether it be good schools, quality healthcare, quality of life, the job market and access to well-paying careers, and

the many reasons people choose to move, there truly is something for everyone in Meridian. It gets brisk in the winters here, though living in an area with four distinct seasons is more than enough to make up for it!

Living in Meridian can very possibly mean finding the very things that help make life more enjoyable. How about heading out on the town for a sizzling mix of fine dining options or a delicious homestyle meal, enjoying a sunny day at a local park, or maybe a relaxing evening at the movies? The best part of living in Meridian is that being a part of all that makes up Idaho. Stretching beyond the city and into the sprawling boundaries of Idaho opens up another world of possibilities. There's a lifetime of places to go and things to do.

How about escaping for the holidays to a mountain retreat, or a week rafting the Salmon River? What about exploring an old ghost town filled with historic treasures, heading over to award-winning wineries, or finding yourself traveling across the plains where the wild horses roam and prairie lands are so vast, they stretch out across the horizon? Life is better in Idaho and now it's time to find all the reasons why you'll enjoy living here so much!

# STAR



The City of Star is a flourishing community of growth combined with the delicate balance of nature. This delightful city boasts a hometown feel of knowing your neighbors combined with an atmosphere of small-town charm. Delight in weekends packed with fun or simply enjoy the peace and quiet of utter relaxation in the comfort of home. Save time cooking and head out to one of the local eateries for savory home-style cooking and tasty treats. Star also offers local area shopping options and things to do.

Enjoy area amenities with things to do including a selection of community classes, the library, sports leagues, a community center, skate park, and the popular Star's Hometown 4th of July Celebration event. Be sure to check out the Star RiverWalk, a popular year-round destination surrounded by nature and ideally located adjacent to the graceful Boise River. The pathway is lined with dense greenery and is popular for its area birdlife including the Great Blue Heron, Bald Eagle, Osprey, Wood Ducks and more! The Boise River is also a popular destination for those warm summer days ideal for



enjoying a day at the water. There's more! Find time to head over to one of the local community parks or the expansive sports park ideal for a picnic or a BBQ and a game!

The sky's the limit for weekends in and around the City of Star! Enjoy a day exploring area shops, going to the salon, and possibly head into the City of Boise for a movie and a night out. Living in the city of Star can mean enjoying a quaint community feel with larger city amenities minutes away. Star is situated in the Treasure Valley which also boasts nearby cities including Boise, Meridian, Eagle, Middleton, Kuna, Nampa, and Caldwell to name a few. Lavish in the luxuries of home in the countryside or close to downtown, whichever you prefer, when you choose to live in the inviting city of Star.

# KUNA

The City of Kuna could easily be described as “big city meets big country” and offers a quick escape from any urban apprehension. Delight in sprawling vistas, various parks, the historical museum &

performing arts center, a selection of wineries, as well as a seasonal creek for waterside enjoyment.

For additional outdoor activity opportunities, a bit further out, you may enjoy trekking over to Nampa and Caldwell's Deer Flat National Wildlife Refuge or out to the Snake River Birds of Prey Area that sits alongside the stunning Snake River.

There's so much to do in and around the City of Kuna. The options are endless! Kuna is close to 30,000 residents and growing, which offers an excellent opportunity to live in a community of familiar names and faces, while still getting to know new residents!

Kuna retains a tight-knit community feel and offers access to big city amenities like that of the much larger City of Boise, Meridian, and Nampa, with travel times ranging in at about an hour or so depending on the desired destination.

Spend your time enjoying the perks of living in a smaller city. You may enjoy the Freedom to enjoy a slower paced lifestyle if you so choose, as well as the many other perks associated with small-town



charm. Enjoy the culture that the City of Kuna creates and the freedom to decide how best to invest your days and evenings living in the countryside.

# NAMPA

The City of Nampa is a flourishing community of steady economic growth combined with a strong presence of community. Nampa boasts a surplus of area amenities, entertainment options and indoor & outdoor activity opportunities. Nampa features 20+ community parks, abundant shopping opportunities including the Karcher Mall and the Treasure Valley Marketplace, a skating rink, museums, multiple movie theater options, a recreation center and more! Living in the City of Nampa brings with it an ideal combination of work and play. Find time to enjoy Lake Lowell and the Deer Flat National Wildlife Refuge, or you may want to consider heading over to the nearby Snake River and the Morley Nelson Snake River Birds of Prey Area.

The City of Nampa is a treasure trove of economic opportunity reaching out into health care and social assistance, manufacturing, retail trade, construction, educational services, and other services. The largest employers in Nampa include Amazon, Wal-Mart Associates Inc., St. Alphonsus Medical Center Nampa, Plexus Corp., Sorrento Lactalis, Northwest Nazarene University, Amalgamated Sugar Co., Great American Snacks, St. Luke's Regional Medical, Woodgrain Millwork Inc., Mission Aviation Fellowship, Heartland RV, Materne North America, ON Semiconductor, Assisted Living of Idaho, Pacific Press Publishing, Fleetwood Homes Inc., Mirage Enterprises Inc., and HB Specialty Foods.

Enjoy a four seasons destination with the perks of Spring, Summer, and Fall fun activities like strolling the





area pathways, boating, golfing, hunting, fishing, horseback riding, or possibly heading over to Lakeview Water Park for water fun or Midway Sports Park ideal for sports activities galore. What about year-round indoor and outdoor concerts, rodeos, and events? You may consider heading over to the Idaho Ford Center for a large selection of events. Have you always wanted to learn how to fly? The Nampa Municipal Airport is used for private, emergency, military, and industrial aviation.

Additional year-round activities also include enjoying all that the Nampa Recreation Center and the Nampa Civic Center have to offer. Or maybe consider taking a semester of classes at the local university or college campus. Whatever you may enjoy Nampa has something for everyone. Discover all that Nampa has to offer you!

# CALDWELL

Take a moment to meet the wealth of the beautiful landscapes within the City of Caldwell. From the rolling green hills lined delicately with vineyards, groves, and orchards, to the valley's floor that is graciously complimented by the winding waters of the magnificent Boise River. Downtown Caldwell is ideally accented by the gentle waters of Indian Creek, a popular destination for those touring area shops and eateries. Find time to enjoy a self-guided tour of this area for an enjoyable day out on the town. This beautifully diverse growing region is filled with warm, fun-filled sunny days, evenings accented with low lying fog, and a hint of snow in the colder months. It's easy to feel spoiled when surrounded by Idaho's fascinating natural settings and breathtaking destinations. Escape to the countryside for stunning scenic landscapes and views across the valley to the peaks of the Owyhee Mountains.

The beautiful City of Caldwell is complemented well with generous indoor and outdoor activity opportunities; from a day touring the wineries, to an evening at the golf course, there is something for everyone. The Canyon County Fairgrounds is a popular location for year-round events like rodeos and the fair. Discover destinations like The College of Idaho well known for its liberal arts education, football team, planetarium, art gallery, and Jewett Auditorium a 850-seat proscenium house that hosts various musical, theatre and cultural events. Searching for adventure close to home? Explore the skies above Caldwell starting at the Caldwell Airport ascend into the skies for an exciting day of skydiving back to Caldwell's glorious earth.

Caldwell is packed with things to do! Find outdoor activity opportunities including fishing, hunting, water activities, various local parks, area OHV trails, and a shooting range. Consider checking out indoor activities that include a choice of movie theaters, an arcade, or exploring the various museums. Take a moment to feel like you've stepped back in time when you discover the local drive-in theatre or find yourself enjoying a historic



tour of the remarkable downtown buildings and train depot. For those who enjoy the simple pleasures of an afternoon on the water surrounded by lush landscapes, you may want to consider heading over to the beautiful Lake Lowell Recreation Area. This highly desirable destination is ideal for enjoying area birdlife complemented by the rich warm colors of an evening sunset.

# EMMETT

Emmett, Idaho, situated in the heart of Gem County, is a picturesque town steeped in history and natural beauty. Nestled within the verdant landscapes of the "Valley of Plenty," Emmett enjoys a tranquil ambiance that beckons both residents and visitors to explore its charming streets and immerse themselves in its unique atmosphere.

The town's roots trace back to its rich agricultural heritage, with farming playing a central role in its economy and culture. Surrounding Emmett are vast expanses of fertile farmland, where crops thrive under the Idaho sun, contributing to the region's reputation for producing high-quality produce.

The gentle waters of the Payette River meander through the countryside, providing not only scenic vistas but also opportunities for outdoor recreation, such as fishing, rafting, and picnicking along its banks. In addition to its natural wonders, Emmett boasts a vibrant downtown area adorned with historic buildings and bustling with local businesses, including quaint shops, cozy cafes, and inviting restaurants serving up delicious fare. The town's close-knit community spirit is palpable, as residents come together to celebrate annual events, such as the Cherry Festival and the Emmett Harvest Festival, showcasing the area's agricultural heritage and fostering a sense of belonging among its inhabitants. With its blend of small-town charm, abundant natural beauty, and rich history, Emmett stands as a testament to the enduring allure of rural life in Idaho.





# FIRST THURSDAY

art, music, in-store promotions,  
wine tastings & more

DOWNTOWN BOISE • EVERY MONTH 5PM - 9PM  
IN-STORE ENTERTAINMENT • FINE & CASUAL DINING • WINE & BEER TASTINGS  
LOCAL ART • LIVE MUSIC • SPECIAL EVENTS  
DOWNTOWNBOISE.ORG



## Indulge BOISE

Experience the finest offerings of Idaho with a range of tour options available in Boise, Eagle/Meridian, Sun Valley, and McCall. Delight in a VIP tour of the city's gourmet delights, immersing yourself in the captivating history, culture, and architecture along the way.

VISIT [INDULGEBOISE.COM](http://INDULGEBOISE.COM) FOR MORE INFORMATION



IDAHO  
*Shakespeare*  
FESTIVAL

—2024 SCHEDULE—

MAY 24 - JUNE 8

*The Merry Wives of Windsor*

*by William Shakespeare, Directed by Terri McMahon*

JUNE 14 - JULY 6

*Agatha Christie's Murder on the Orient Express*

*by Agatha Christie, Directed by Charles Fee*

JULY 12 - AUGUST 4

*Into the Woods*

*By James Lapine, Directed by Victoria Bussert*

AUGUST 9 - 31

*A Midsummer Night's Dream*

*By William Shakespeare, Directed by Sara Bruner*

SEPTEMBER 6 - 9

*Always... Patsy Cline*

*Directed by Victoria Bussert*

*emmett cherry  
festival*

*june 12-15  
emmett city park  
[emmettcherryfestival.com](http://emmettcherryfestival.com)*



# great garden escape

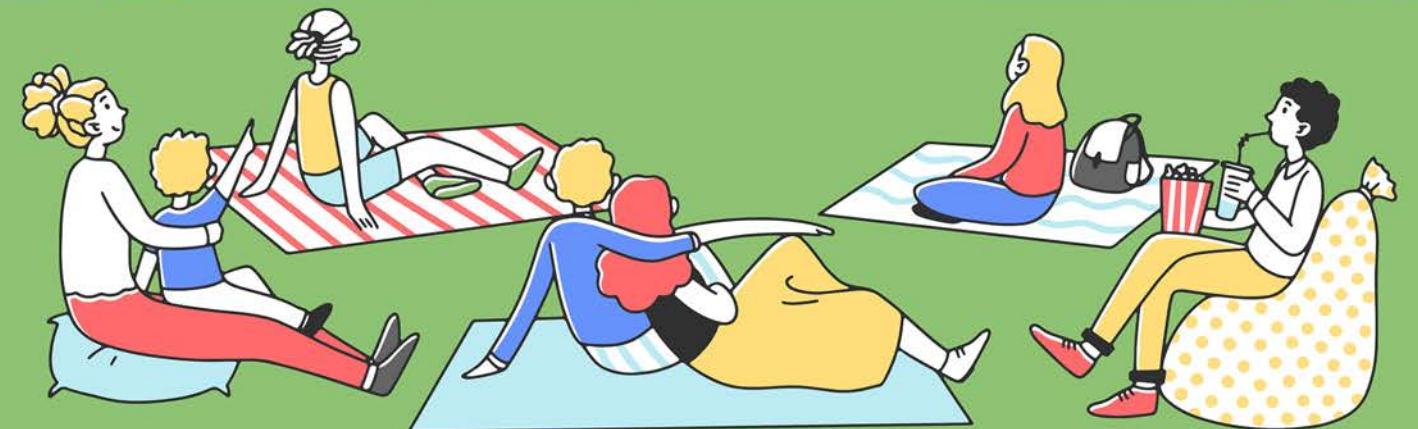
a summer music series live from the  
Idaho Botanical Garden on  
historical Outlaw Field

for tickets & schedule:

[idahobotanicalgarden.com/outlaw-field](https://idahobotanicalgarden.com/outlaw-field)

## FREE MOVIES IN THE PARK

MIDWAY PARK, NAMPA



## SILVER SCREEN ON THE **GREEN**

The Super Mario Bros Movie  
June 14

Wonka  
July 12

Elemental  
June 28

Trolls Band Together  
July 26

MOVIES BEGIN AT DUSK





June 15  
1:00-5:00PM  
**Beer & Bacon  
FESTIVAL**  
Expo Idaho



**BOISE  
MUSIC FESTIVAL**  
Sat, June 22, 2024  
Expo Idaho  
10am-10pm

[boisemusicfestival.com](http://boisemusicfestival.com)



A close-up photograph of various art supplies including paintbrushes, a palette knife, and tubes of paint on a canvas with abstract blue and green paint strokes. A faint, stylized circular logo is overlaid on the right side of the image.

# meridian fine art festival

125 fine artists & craftsman  
sat, june 29th 10-5 • sun, june 30th 10-4  
julius m kleiner park

[meridianfineartfestival.com](http://meridianfineartfestival.com)

A vibrant image of fireworks exploding in the night sky, with a stylized American flag in the background. The stars and stripes of the flag are visible, and the fireworks are in shades of red, white, and blue.

# FOURTH OF JULY FIREWORKS

July 4th, 2024 • 6:00PM-11:00PM

Ann Morrison Park  
1000 S Americana Blvd





# LAVENDER HARVEST FESTIVAL

2729 N Haven Drive, Eagle

for tickets & info, visit:  
[redchairlavender.com](http://redchairlavender.com)

july 6th-7th • 9:00am - 4:00pm • harvesting • local vendors • live music • food & drink • crafts

## Show Me Reptiles & Exotics Show

July 20-21 • 10:00AM-3:30PM

Expo Idaho  
North Expo Building



# WESTERN IDAHO FAIR

EXPO IDAHO • AUGUST 16-25

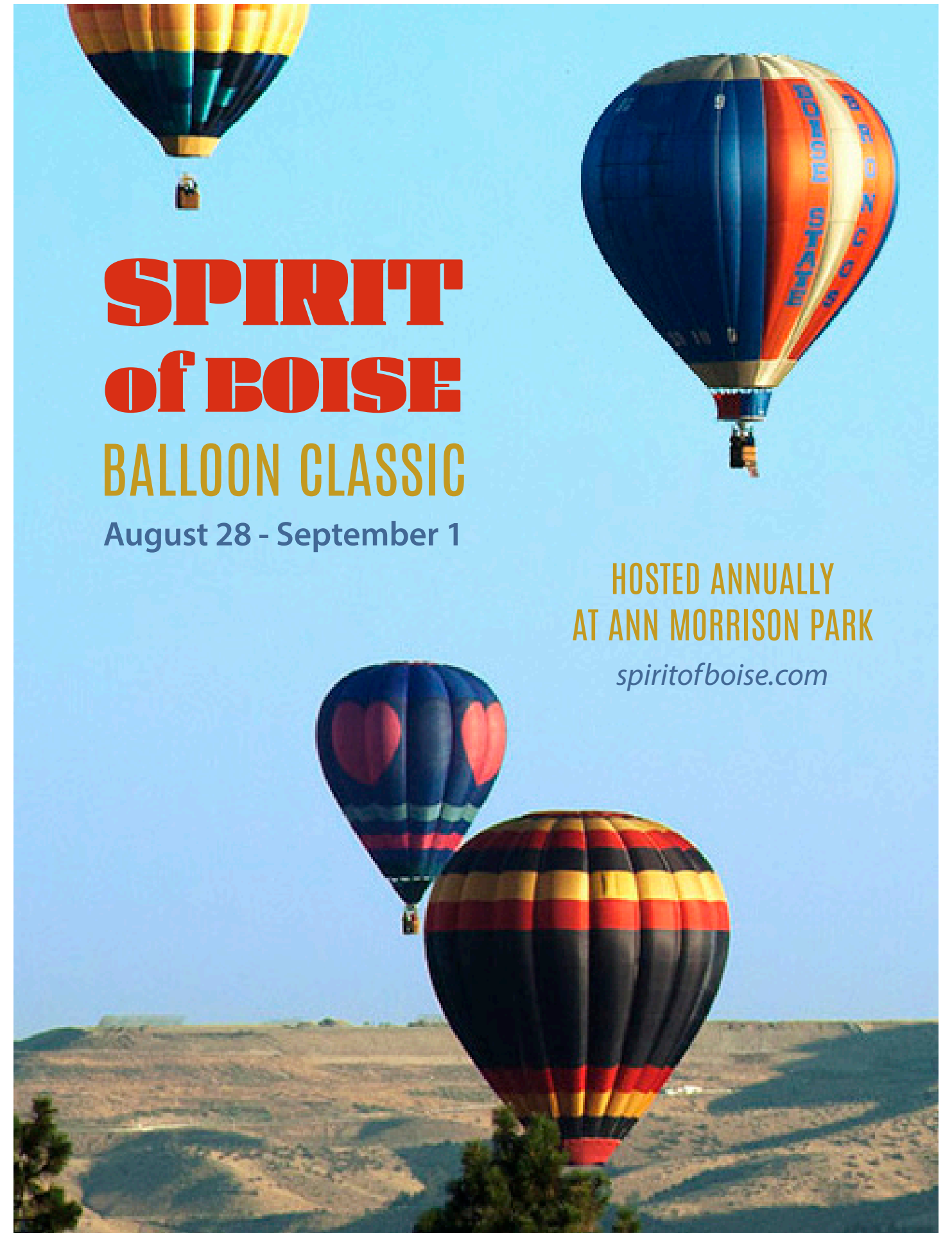
FOR TICKETS & INFO  
[IDAHOFAIR.COM](http://IDAHOFAIR.COM)



# SPIRIT of BOISE BALLOON CLASSIC

August 28 - September 1

HOSTED ANNUALLY  
AT ANN MORRISON PARK  
[spiritofboise.com](http://spiritofboise.com)

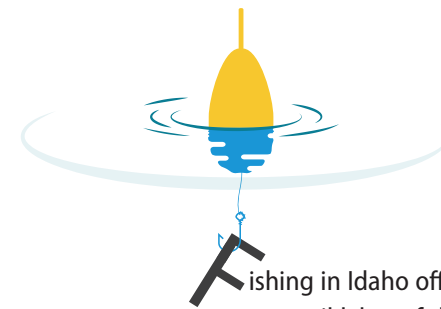






*Casting a Line:*

## Exploring Idaho's Diverse Fishing Regions



Fishing in Idaho offers a diverse range of experiences across its distinct regions. From the tranquil lakes of the Panhandle to the rugged rivers of the Salmon region, the state is a paradise for anglers seeking adventure and serenity in equal measure. Each region boasts its own unique charm and opportunities, whether it's the world-class steelhead and salmon fishing in the Clearwater region, the fly fishing paradise of the Southeast, or the scenic beauty of the Magic Valley. With abundant trout, bass, salmon, and more, Idaho's waters beckon anglers to cast their lines and embark on unforgettable fishing adventures amidst stunning natural landscapes.

### Panhandle Region:

The Panhandle region, with its lush forests and sparkling lakes, is a haven for anglers seeking solitude and serenity. Lake Pend Oreille, Idaho's largest lake, is a prime destination for trout, bass, and kokanee salmon fishing. Anglers can also explore the region's numerous rivers and streams, including the St. Joe River and the Coeur d'Alene River, renowned for their pristine waters and abundant trout populations.

### Clearwater Region:

Home to the majestic Clearwater River, this region is famous for its world-class steelhead and salmon fishing. Anglers flock to the Clearwater to test their skills against these powerful fish, particularly during the fall and winter runs. Additionally, the region offers excellent trout fishing opportunities in its many tributaries, such as the Lochsa and Selway rivers, where anglers can experience the thrill of catching wild trout in breathtaking surroundings.

### Southwest Region:

Fishing in southwest Idaho is a diverse experience, with the Snake River offering opportunities for trout, bass, catfish, and more. Popular spots like Lake Lowell and CJ Strike Reservoir attract anglers seeking largemouth bass and crappie. Creeks, streams, and irrigation canals provide scenic settings for fly fishing and spin casting. With abundant waters and varied species, southwest Idaho promises enjoyable fishing outings for all.

### Salmon Region:

As its name suggests, the Salmon region is synonymous with one of the most prized game fish in North America—the mighty Chinook salmon. Each year, thousands of anglers descend upon the region to participate in the annual salmon run, where they can test their mettle against these powerful fish in the region's rivers, including the Salmon River and the Middle Fork of the Salmon River. In addition to salmon,





the region offers excellent fishing for steelhead, trout, and smallmouth bass, making it a must-visit destination for any angler.

**Magic Valley Region:**

True to its name, the Magic Valley region offers enchanting fishing opportunities amidst its rugged landscapes and fertile farmlands. The Snake River, which meanders through the heart of the region, provides excellent fishing for trout, largemouth bass, and catfish. Anglers can also explore the region's reservoirs, such as Lake Walcott and Magic Reservoir, which are teeming with a variety of game fish, including rainbow trout, largemouth bass, and crappie.

**Upper Snake Region:**

The Upper Snake region encompasses some of Idaho's most iconic fishing destinations, including the famous Henry's Fork and the legendary Teton River. Anglers flock to these rivers to test their skills against wily trout in breathtakingly beautiful settings. Additionally, the region offers excellent fishing in its numerous lakes and reservoirs, such as Palisades Reservoir and Island Park Reservoir, where anglers can target a variety of trout and other game fish.

**Southeast Region:**

The Southeast region of Idaho is a paradise for fly fishermen, with its scenic rivers and diverse aquatic ecosystems. The South Fork of the Snake River is renowned for its trophy trout fishing, with abundant populations of rainbow, brown, and cutthroat trout. Anglers can also explore the region's lesser-known gems, such as the Teton River and Henry's Fork, which offer excellent dry fly fishing for native trout species.



Whether you're seeking the thrill of hooking a trophy trout in a pristine mountain stream or the challenge of battling a Chinook salmon in a rushing river, Idaho offers something for every angler. With its diverse landscapes, abundant waterways, and world-class fishing opportunities, the Gem State truly lives up to its reputation as a fishing paradise. So grab your rod and reel, and embark on an unforgettable fishing adventure in the breathtaking wilderness of Idaho.

**Fishing in Idaho requires a valid fishing license, and the rules and regulations governing fishing licenses are set by the Idaho Department of Fish and Game (IDFG). Here's a summary of the fishing license rules in Idaho:**



- License Types:** Idaho offers various types of fishing licenses, including resident, non-resident, youth, senior, disabled, and combination licenses. The fees and eligibility criteria vary for each type.
  - Residency Requirements:** Residents of Idaho are eligible for resident fishing licenses, while non-residents must purchase non-resident licenses. Proof of residency, such as a driver's license or state ID, may be required when purchasing a resident license.
  - Age Requirements:** Youth and senior licenses may have specific age requirements for eligibility, typically defined as individuals under a certain age (e.g., 18 for youth licenses, 65 for senior licenses).
  - Fishing Seasons and Limits:** Fishing seasons and catch limits for various fish species are established by the IDFG and may vary depending on the location and time of year. Anglers are required to adhere to these regulations to help conserve fish populations and maintain healthy ecosystems.
  - Special Permits and Tags:** In addition to a basic fishing license, anglers may need special permits or tags for certain activities, such as fishing for salmon, steelhead, or sturgeon. These permits often have specific rules and additional fees associated with them.
  - Catch and Release:** Some areas or species may have catch-and-release regulations in place to protect vulnerable populations or promote sustainable fishing practices. Anglers should familiarize themselves with these regulations before fishing in specific locations.
  - Laws and Enforcement:** Anglers are required to follow all state fishing laws and regulations, and failure to comply can result in fines, license revocation, or other penalties. Conservation officers from the IDFG enforce these regulations to ensure the sustainable management of Idaho's fisheries.
  - Online Licensing:** Fishing licenses can typically be purchased online through the IDFG website, at authorized license vendors, or at IDFG offices. Anglers may need to provide personal information and payment details when purchasing licenses online or in person.
- It's essential for anglers to review the current fishing regulations and obtain the appropriate licenses and permits before engaging in fishing activities in Idaho. By following these rules, anglers can enjoy the state's abundant fishing opportunities while contributing to the conservation and preservation of its natural resources.





# FARMERS

## ..... MARKET .....

... SUPPORT LOCAL ...

**BOISE FARMERS MARKET**  
**APRIL - OCTOBER**

**1500 SHORELINE DR.**  
**SATURDAYS 9AM - 1PM**

**CAPITAL CITY PUBLIC MARKET**  
**APRIL - DECEMBER**

**8TH ST. • DOWNTOWN BOISE**  
**SATURDAYS 9:30AM - 1:30PM**

**CALDWELL FARM TO FORK FARMERS MARKET**  
**MAY - SEPTEMBER**

**INDIAN CREEK PLAZA**  
**TUESDAYS 5PM - 9PM**

**EAGLE SATURDAY MARKET**  
**MAY - OCTOBER**

**HERITAGE PARK • EAGLE**  
**SATURDAYS 9:00AM - 2PM**

**EMMETT FARMERS MARKET**  
**JUNE - OCTOBER**

**BLASER PARK • DOWNTOWN EMMETT**  
**WEDNESDAYS 3PM - 6PM & SATURDAYS 9AM - 1PM**

**MCCALL FARMERS MARKET**  
**JUNE - MID OCTOBER**

**DOWNTOWN 2ND STREET • MCCALL**  
**WEDNESDAY 10AM - 1PM & SATURDAYS 10AM - 1PM**

**MOUNTAIN HOME FARMERS MARKET**  
**MAY - OCTOBER**

**RAILROAD PARK DOWNTOWN / MAIN ST.**  
**SATURDAYS 8AM - 1PM**

**NAMPA FARMERS MARKET**  
**APRIL - OCTOBER**

**FRONT ST. & 13TH AVE. • NAMPA**  
**SATURDAY 9AM - 1PM**

**WEISER FARMERS MARKET**  
**MID AUGUST - END OF SEPTEMBER**

**WEISER TRAIN DEPOT • WEISER**  
**THURSDAYS 5:00PM - 7:30PM**

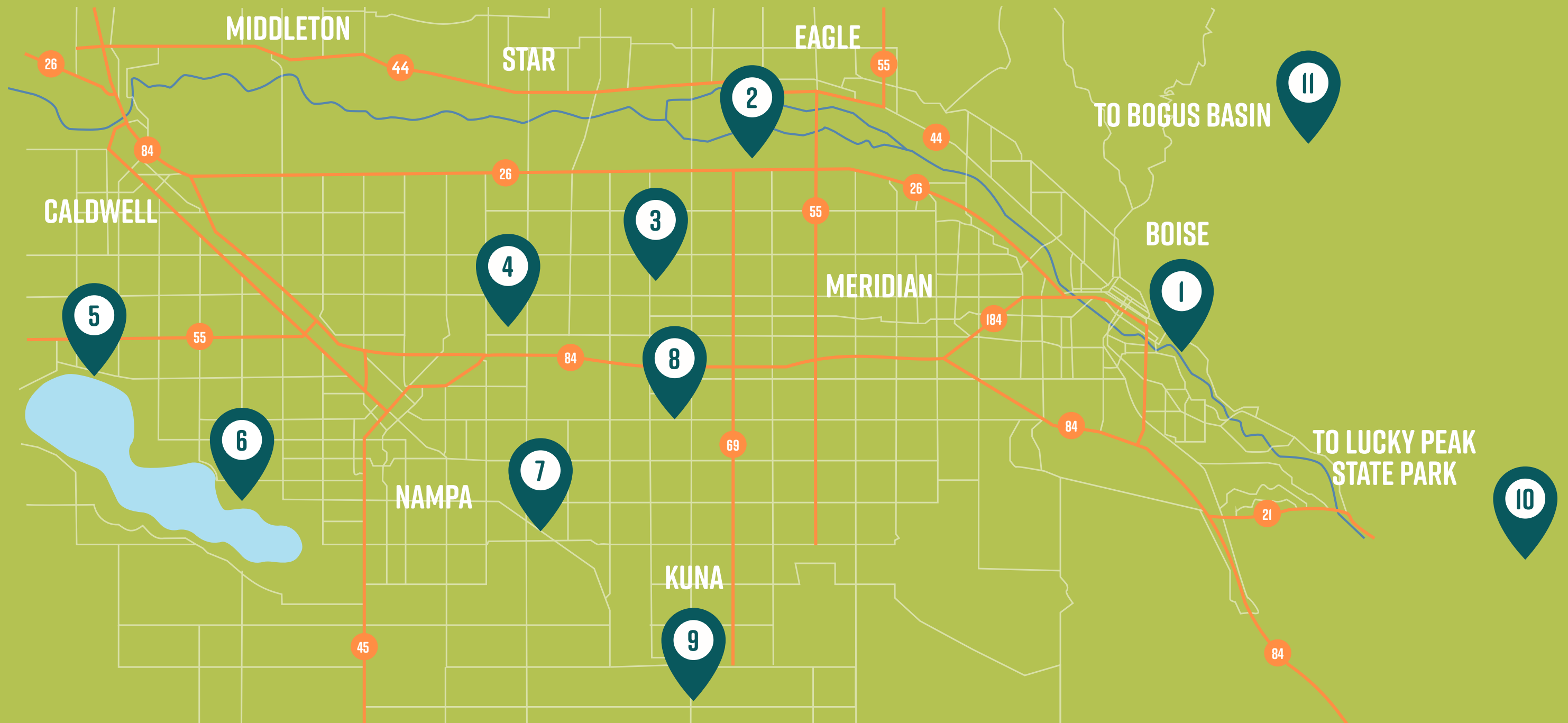


# DISC GOLF COURSES

## IDAHO PARKS AND RECREATION

1. ANN MORRISON PARK  
2. EAGLE ISLAND STATE PARK  
3. SETTLERS PARK  
4. COLLEGE OF WESTERN IDAHO  
5. MALLARD PARK  
6. LAKE LOWELL PARK

7. OSBORNE PARK  
8. BEAR CREEK PARK  
9. KUNA PARK  
10. SANDY POINT BEACH  
LUCKY PEAK STATE PARK  
11. BOGUS BASIN







01

BALLINGER FLAT TRAIL | MOUNTAIN HOME | 0.6MI ●

A short side trip past a spring to overlook the South Fork Boise River with access from Danskin Trail #340. The view from the canyon rim is well worth the ride.

02

THE WASH TRAIL | EMMETT | 1.6MI ●

This trail runs down "The Wash" from East Perimeter Trail down to Little Gem Service Road with hundreds of options to ride other connecting trails up both sides of the valley. Though most are quite steep and slick, hidden gems await your discovery.

03

AROUND THE MOUNTAIN | BOISE | 9.8MI ■

A great loop around Bogus Basin Ski Resort with amazing views all the way to Sawtooths and down into Boise. Moderate climbs, great berms and fast descents. The trail is well marked and connects to many other trails to create many other options.

04

THUNDER MONKEY | BOISE | 15.6MI ■

Beautiful alpine ride through MTB country with climbs, breathtaking descents, wood and stone features, and excellent backcountry single track. Connect the Shafer Butte system with Mahalo and Dry Creek. *Note: This is a shuttle ride unless you're into pedaling up 14 miles back to the ski area on Bogus Basin road after the descent.*

05

GREENHORN GULCH ADVENTURE | KETCHUM | 22.6MI ■

A stunning western landscape with narrow singletrack and a riot of springtime wildflowers. An excellent destination for eMTBing located just south of Sun Valley, ID. The majority of the trails in the network are open to eMTBs, allowing for multiple loops that vary from 30 minutes to all day.

06

BB BOMBER | BOISE | 27.3MI ■

A great shuttle run that will take you through the vast pines of Bogus Basin, past iconic Stack Rock and finish up on an open, flowing single track. *Note: Dogs may be allowed off-leash on this trail.*

07

TABLE ROCK TECH | BOISE | 3.6MI ◆

One of the best ways to experience the rocky trails in the Boise area. This ride starts from the top of Table Rock and can either be shuttled, or you can climb one of the numerous trails in the Table Rock system to its start. *Note: Dogs may be allowed off-leash on this trail.*

08

THE BIG POTATO | BOISE | 41MI ◆

The earliest this trail can be accessed is in Mid to Late May, depending on snow conditions. This ride is one of the best ways to experience the foothills outside of Boise. *Note: Be prepared with food and water as Simplot lodge is the only stop along the way that may have access to supplies.*

09

COYOTE CLASSIC RACE COURSE | EAGLE | 48MI ◆

This is the 2012 Race Course that tours some of the best single track and views in the Avimor trail system. *Note: You'll find cows grazing in some of the more remote areas so please be aware of your surroundings.*



# BOISE PARKS

*Fairview Park*

## ANN MORRISON PARK

**1000 N. AMERICANA BLVD • BOISE**

153 Acres • Spray Fountain • Gardens • Playground • Tennis Courts • Softball Diamonds • Practice fields • Picnic Pavilion • Riverside Access for Anglers • Outdoor Gym • Pedestrian Bridge to Downtown Boise • Sand Volleyball Courts • Greenbelt Access

## BOISE RIVER PARK

**WHITEWATER PARK BLVD / FAIRVIEW AVE • BOISE**

An ideal spot for surfing or kayaking the “wave” of the Boise River, or for watching from the Greenbelt

## BORAH PARK

**801 S AURORA DRIVE • BOISE**

13 Acres • Outdoor Community Pool • Splash Pad • Picnic Pavilion • 2 Playgrounds

## CAMEL’S BACK PARK

**1200 W HERON STREET • BOISE**

Tennis Courts • Sand Volleyball Courts • Picnic Area • Playground • Outdoor Gym • Foothills Access • Practice Fields

## EAGLE ISLAND STATE PARK

**165 S EAGLE ISLAND PKWY • EAGLE**

Swimming Beach • Waterslide (Open Memorial Day Weekend ~ Labor Day) • Playground • Charcoal Grills • Fishing • Volleyball Courts • Disc Golf Course • Horseshoe Pits • 2 Picnic Pavilions • Visitor’s Center • Paddleboard Rentals

## ESTHER SIMPLOT PARK

**614 WHITEWATER PARK BLVD • BOISE**

Fishing • Dog Off-Leash Area • Trails • Docks • Wetlands Boardwalks • Grassy Open Areas • Playground • Open Play Areas

## JULIA DAVIS PARK

**700 S CAPITOL BLVD • BOISE**

Home to Zoo Boise • Boise Art Museum Idaho State Historical Museum • Discovery Center of Idaho • Rose Garden • Bronze Sculptures • Playground • Picnic Pavilions • Tennis Courts • Greenbelt Access

**PARKS.CITYOFBOISE.ORG**





## SPECIALTY GYMS

## GENERAL FITNESS

**ASANA CLIMBING GYM**  
Garden City | [AsanaClimbingGym.com](http://AsanaClimbingGym.com)

**ARBOR CROSSFIT**  
Boise | [CrossfitArbor.com](http://CrossfitArbor.com)

**BOISE CROSSFIT**  
Boise | [BoiseCrossfit.com](http://BoiseCrossfit.com)

**CAMP RHINO CROSSFIT**  
Boise | [CampRhino.com](http://CampRhino.com)

**MMA GYM**  
Boise | [SBGIdaho.com](http://SBGIdaho.com)

**VERDANT CROSSFIT**  
Boise | [VerdantFit.com](http://VerdantFit.com)

**ANYTIME FITNESS**  
Across The Valley | [AnytimeFitness.com](http://AnytimeFitness.com)

**AXIOM FITNESS**  
Boise & Meridian | [AxiomFitness.com](http://AxiomFitness.com)

**CRUNCH**  
Across The Valley | [Crunch.com](http://Crunch.com)

**GROVE FITNESS CLUB & SPA**  
Boise | [Grovefitness-Spa.com](http://Grovefitness-Spa.com)

**IDAHO FITNESS FACTORY**  
Boise & Meridian | [IdahoFitnessFactory.com](http://IdahoFitnessFactory.com)

**JACK CITY FITNESS**  
Boise | [JackCityFitness.com](http://JackCityFitness.com)

**JOHNNY'S FIT CLUB**  
Boise | [FitClubBoise.com](http://FitClubBoise.com)

**KVELL FITNESS & NUTRITION**  
Boise & Meridian | [KvellFit.com](http://KvellFit.com)

**PLANET FITNESS**  
Boise & Garden City | [PlanetFitness.com](http://PlanetFitness.com)

**THE MECCA GYM**  
Eagle | [TheMeccaGym.com](http://TheMeccaGym.com)



# RESTAURANTS



## boise

- Alavita

807 W Idaho St
- Alyonka Russian Cuisine

2870 W State St
- Barbacoa Grill

276 West Bobwhite Ct
- Bardenay

610 W Grove St
- Basque Market

608 W Grove St
- Big Jud's

1289 S Protest Rd
- Bittercreek Alehouse

246 N 8th St
- Brickyard

601 W Main St
- Chandler's Steakhouse

981 W Grove St
- Fanci Freez

1402 W State St
- Fork

199 N 8th St
- Goodwood Bbq Co.

7849 W Spectrum St
- Hawkins Pac-Out

2315 N Bogus Basin Rd
- Lemon Tree

224 N 10th St
- Lock Stock & Barrel

1100 W Jefferson St
- Mai Thai

750 W Idaho St
- Madre

1034 S La Pointe St
- Wild Root

276 N 8th St
- Willowcreek Grill

2273 S Vista Ave #150
- Yoi Tomo Sushi & Grill

405 S Capitol Blvd

## eagle

- Ahi Sushi Bar

1193 E Winding Creek Dr
- Bacquet's

1117 E Winding Creek Dr
- Bodacious Pig Barbecue

34 E State St
- CACi Wood-Fired Grill

1592 E Riverside Dr
- Chandlers Steak House

981 W Grove St
- Coyne's

676 E Riverside Dr
- CRAVE

165 E Colchester Dr
- daVinci's

190 E State St
- Mongolian Of Eagle

362 S Eagle Rd
- Oak Barrel Of Eagle

1065 E Winding Creek Dr
- Perks Of Life

1540 E Iron Eagle Dr
- Porterhouse Market

600 S Rivershore Ln
- Rembrandts

93 S Eagle Rd
- Rice Contemporary Asian Cuisine

228 E Plaza st
- Rib Shack Barbecue

395 W State St
- Schnitzel Garten

1225 E Winding Creek Dr #130
- Spitfire Tacos + Tequila

231 E State St
- The Stuffed Olive

404 S Eagle Rd
- Squeeze In

228 E Plaza Dr Suite F

## meridian

- Casa del Matador

3690 E Monarch Sky Ln
- DALTON ROYAL

3161 E Ustick RD #110
- Epi's Basque Restaurant

1115 N Main St
- Fat Guy's Fresh Deli

1626 S Wells Ave
- Gino's Italian

3015 W McMillan Rd #108
- Gramercy Park Pizza

1626 S Wells Ave #115
- Grant's Neighborhood Grill

1835 W Cherry Ln
- Homestead Bar & Grill

1441 N Eagle Rd
- Johnny Bronx Pizza

4970 N Linder Rd
- Kahootz Steak & Ale House

1603 N Main St
- Kona Grill

3573 E LONGWING LN #140
- Land Ocean

2902 N EAGLE RD
- Ling & Louie's

3210 E Louise Dr
- Louie's Pizza & Italian

2500 E Fairview Ave
- Lucky Fins

1441 N Eagle Rd
- Moe Joe's

12951 E Overland Rd
- Ram

3272 E Pine Ave
- Sa-Wad-Dee

1890 E Fairview Ave
- Sockeye Brewing

12542 W Fairview Ave
- Terri's Cafe

2483 E Fairview Ave

## nampa

- Aguillilla Restaurant

324 11th Ave N
- Bandidos Mexican Grill

16462 N Franklin Blvd
- Blazen Burgers

216 1st Ave S
- Brick 29 Bistro

320 11th Ave S #300
- Dickey's BBQ Pit

16565 N Marketplace Blvd
- Dos Caminos

908 3rd St S
- Fiesta Guadalajara

1202 N Jacob Alcott Way
- Hong Kong Restaurant

117 12th Ave S
- Holy Cow Idaho!

1226 1st St S
- Island Kine Grinds

140 Caldwell Blvd
- JP Thailand Express

2025 12th Ave Rd
- Krung Thai Restaurant

3008 Garrity Blvd
- LeBaron's Honker Cafe

1210 2nd St S
- Lamai Thai Food

453 Caldwell Blvd
- Little Saigon Vietnamese

1305 2nd St S #100
- Messenger Pizza

1224 1st St S
- Ming Hao Restaurant

3107 Garrity Blvd
- Pacific Sushi

624 12th Ave S
- The Tower Grill

105 Municipal Dr
- Wheeler's Handout

215 Caldwell Blvd



# BREWED LOCALLY



## *alchemist coffee*

10650 W OVERLAND RD BOISE, ID 83709  
ALCHEMISTCOFFEE.COM

## *big city coffee & cafe*

1416 W GROVE ST, BOISE, ID 83702  
BIGCITYBOISE.COM

## *coffee studio*

8205 W RIFLEMAN ST BOISE, ID 83704

## *dawson taylor*

1035 S LUSK ST, BOISE, ID 83706  
219 N 8TH ST, BOISE, IDAHO 83702  
DISTRICTCOFFEEHOUSE.COM

## *flying m coffee*

500 WEST IDAHO ST #100, BOISE, ID 83702  
1314 2ND ST SOUTH, NAMPA, ID 83651  
724 ARTHUR ST, CALDWELL, ID 83605  
FLYINGMCOFFEE.COM

## *form & function*

511 W BROAD ST, BOISE, ID 83702  
FORMANDFUNCTIONCOFFEE.COM

## *java coffee shop*

223 N 6TH SUITE 110 BOISE, ID 83702 (DOWNTOWN)  
1612 N 13TH ST BOISE, ID 83702 (HYDE PARK)  
JAVAIDAHO.COM

## *mocha moose coffee*

2596 N BOGUS BASIN RD, BOISE, ID 83702

## *push and pour*

214 EAST 34TH ST, GARDEN CITY, ID 83714  
PUSHANDPOUR.COM

## *slow by slow*

405 S 8TH ST, BOISE, ID 83702  
SLOWBYSLOW.COM

## *the district coffee house*

219 N 10TH ST BOISE, ID 83702  
DISTRICTCOFFEEHOUSE.COM



# CRAFT BREWERIES

YOU MUST BE 21 YEARS OLD TO PURCHASE OR CONSUME ALCOHOLIC BEVERAGES



**10 BARREL BREWING CO**  
816 W Bannock St, Boise

**LOST GROVE BREWING**  
1026 S La Pointe St, Boise

**BARBARIAN BREWING**  
5270 W Chinden Blvd, Garden City

**MAD SWEDE BREWING CO**  
2772 S Cole Rd #140 ,Boise

**BARBARIAN BREWING**  
1022 W Main St, Boise

**MOTHER EARTH BREWING CO**  
1428 Madison Ave., Nampa

**BEAR ISLAND BREWING CO**  
1620 N Liberty St, Boise

**PAYETTE BREWING**  
733 Pioneer St., Boise

**BOISE BREWING**  
521 W Broad St., Boise

**POWDERHAUS BREWING CO**  
9719 W Chinden Blvd., Garden City

**CLAIRVOYANT BREWING CO**  
9115 W Chinden Blvd, Garden City  
2800 W Idaho St, Boise, ID 83702

**RAM RESTAURANT & BREWERY**  
709 E Park Blvd, Boise

**CLOUD 9 BREWERY**  
1750 W State St., Boise

**RAM RESTAURANT & BREWERY**  
3272 E Pine Ave, Meridian

**CRESCENT BREWERY**  
1521 Front St., Nampa

**SOCKEYE BREWING**  
12542 W FAIRVIEW AVE, BOISE

**EDGE BREWING CO**  
525 N Steelhead Way, Boise

**WESTERN COLLECTIVE**  
111 W 33rd St, Garden City

**HIGHLANDS HOLLOW BREWING**  
2455 Harrison Hollow Blvd., Boise

**WHITE DOG BREWING**  
705 W Fulton St, Boise

**LOOSE SCREW BEER CO**  
1511 W McMillan Rd, #100, Meridian

**WOODLAND EMPIRE BREWERY**  
1114 W Front St, Boise



**3 HORSE RANCH VINEYARDS**  
5900 PEARL RD, EAGLE

**BITNER VINEYARDS**  
16645 PLUM RD, CALDWELL

**BODOVINO**  
404 S 8TH ST, BOISE

**CINDER WINES**  
107 E 44TH ST, GARDEN CITY

**COILED WINES**  
3408 W CHINDEN BLVD, GARDEN CITY

**DUDE DEWALT CELLARS**  
5446 ID-16, Eagle

**HELLS CANYON WINERY**  
18835 SYMMS RD, CALDWELL

**HUSTON VINEYARDS**  
16473 CHICKEN DINNER RD, CALDWELL

**INDIAN CREEK WINERY**  
1000 N MCDERMOTT RD, KUNA

**KOENIG VINEYARDS**  
21452 HOSKINS RD, CALDWELL

**SAWTOOTH WINERY**  
13750 SURREY LN, NAMPA

**SPLIT RAIL WINERY**  
4338 W CHINDEN BLVD, GARDEN CITY

**STE. CHAPELLE WINERY**  
19348 LOWELL RD, CALDWELL

**TELAYA WINE CO.**  
240 E 32ND ST, GARDEN CITY



YOU MUST BE 21 YEARS OLD TO PURCHASE OR CONSUME ALCOHOLIC BEVERAGES

# LOCAL WINERIES



# HOW FAR FROM BOISE IS...



# WHAT'S THE WEATHER LIKE IN BOISE?

|     | RECORD HIGH °F | AVG HIGH °F | AVG LOW °F | RECORD LOW °F | RAIN INCHES |
|-----|----------------|-------------|------------|---------------|-------------|
| JAN | 63°            | 38°         | 25°        | -28°          | 1.24"       |
| FEB | 71°            | 45°         | 28°        | -15°          | 1.03"       |
| MAR | 82°            | 55°         | 34°        | 5°            | 1.39"       |
| APR | 92°            | 62°         | 39°        | 11°           | 1.23"       |
| MAY | 100°           | 72°         | 47°        | 22°           | 1.39"       |
| JUN | 109°           | 81°         | 54°        | 30°           | .69"        |
| JUL | 111°           | 91°         | 60°        | 35°           | .33"        |
| AUG | 110°           | 90°         | 60°        | 32°           | .24"        |
| SEP | 102°           | 79°         | 51°        | 23°           | .58"        |
| OCT | 94°            | 65°         | 41°        | 11°           | .75"        |
| NOV | 78°            | 48°         | 32°        | 10°           | 1.35"       |
| DEC | 70°            | 37°         | 24°        | -25°          | 1.55"       |

Annual high temperature: 63.7°F  
Annual low temperature: 41.3°F  
Average temperature: 52.5°F  
Average annual precipitation - rainfall: 11.66"  
Average annual snowfall: 19"

Source: [worldclimate.com/climate/us/idaho/boise](https://worldclimate.com/climate/us/idaho/boise)



IDAHO IS BEAUTIFUL

