



HUGHES REAL ESTATE GROUP OF SILVERCREEK REALTY GROUP

TREASURE VALLEY

SEASONAL ACTIVITIES GUIDE

2023 FALL EDITION



BOISE | BRUNEAU | CALDWELL | CAMBRIDGE | CASCADE | COUNCIL | DONNELLY | EAGLE | EMMETT | FALL CREEK
FEATHERVILLE | FRUITLAND | GARDEN VALLEY | GLENNS FERRY | GRAND VIEW | GREENLEAF | HOMEDALE
HORSESHOE BEND | IDAHO CITY | KUNA | LOWMAN | MARSING | MCCALL | MELBA | MERIDIAN | MIDVALE
MOUNTAIN HOME | MURPHY | NAMPA | NEW MEADOWS | NEW PLYMOUTH | NOTUS | PARMA
PAYETTE | SILVER CITY | WEISER | WILDER | YELLOW PINE

TREASURE VALLEY SEASONAL ACTIVITIES GUIDE | 2023 FALL EDITION
Cover photo - Caldron Linn by Kevin Hughes

CREATIVE & DESIGN **Betty Guerrero**

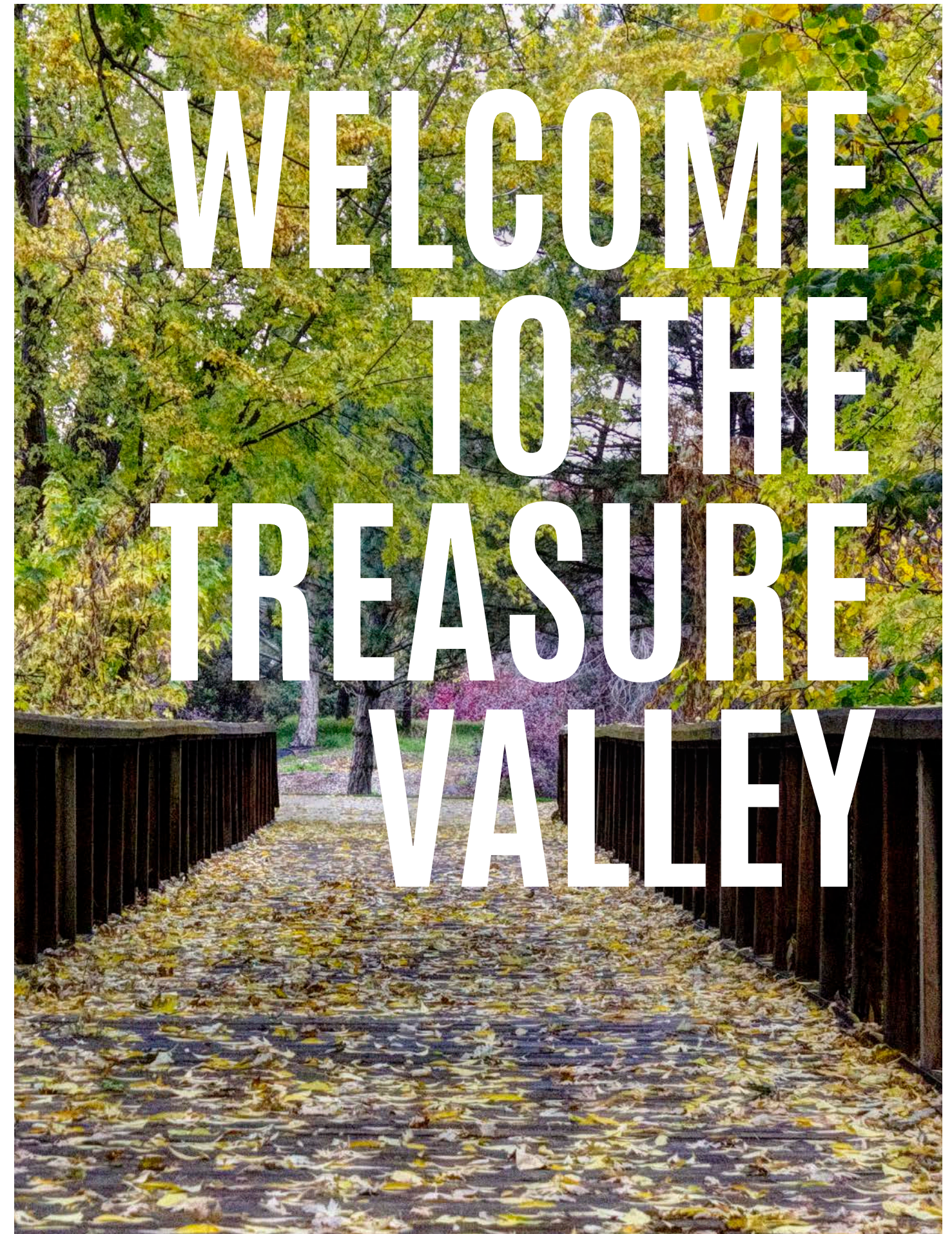
PHOTOS **Kevin Hughes**
Karen Hughes

PUBLISHED **September 1, 2023**

HUGHES
REAL ESTATE GROUP
of **Silvercreek**
REALTY GROUP

827 S BRIDGEWAY PLACE, EAGLE, ID 83616
208.571.7145 | HughesGroup@BuyIdahoRealEstate.com

A special thanks to the REALTORS® of Hughes Real Estate Group of Silvercreek Realty Group



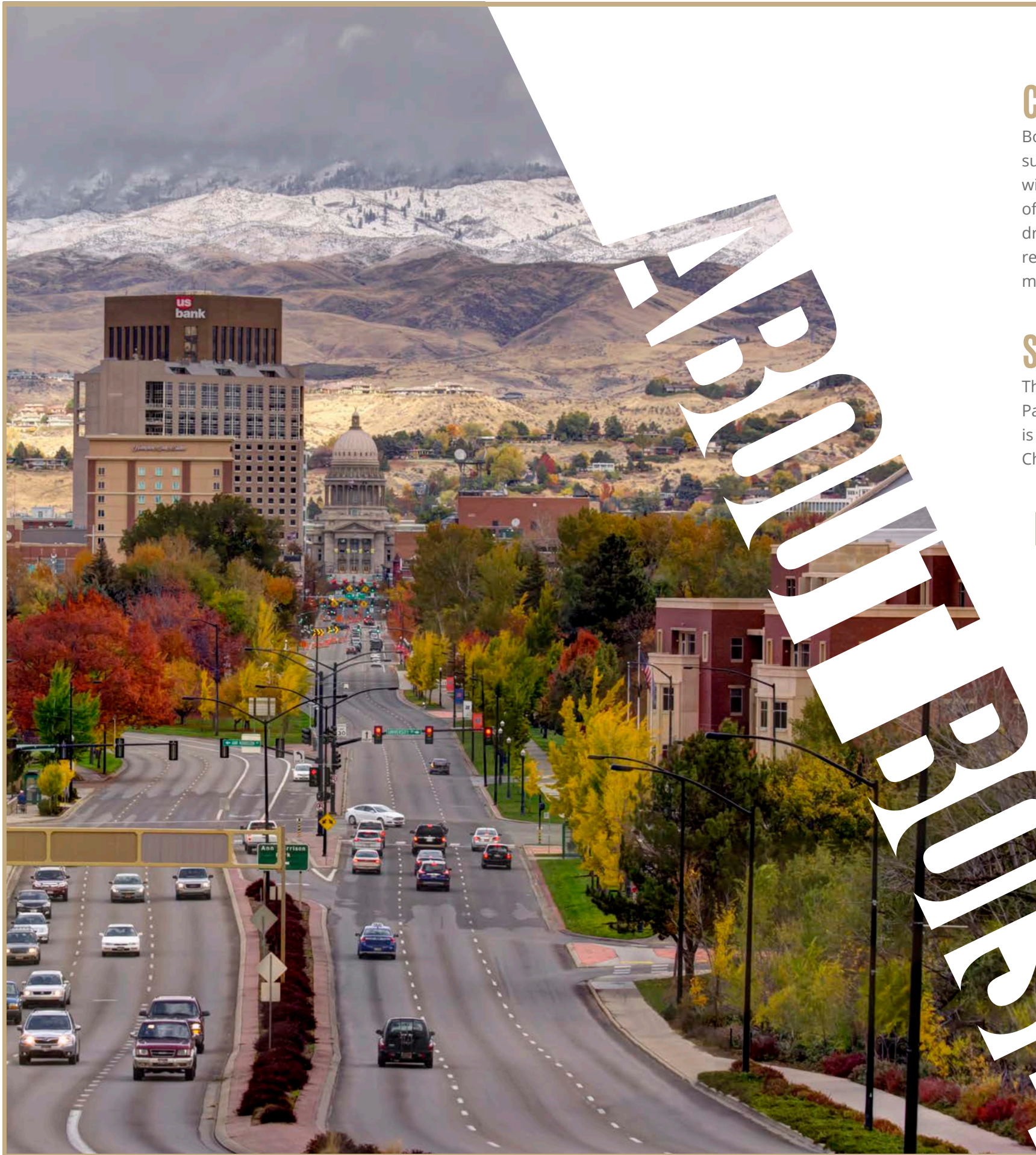
**WELCOME
TO THE
TREASURE
VALLEY**



FALL 2023 FEATURES

18	FIRST THURSDAYS
19	INDULGE BOISE
20	SPIRIT OF BOISE BALLOON CLASSIC
21	LOWE FAMILY FARMSTEAD
22	WINE SAFARI
23	MERIDIAN ART WEEK
24	HOPS & CROPS FESTIVAL
25	DOGTOBERFEST
26	FALL HARVEST DAYS
27	KIDS DISCOVERY EXPO
28	OKTOBERFEST
30	CRAFT & CHOCOLATE AFFAIRE
31	WINTER WONDERLAND
32	AUTUMN IN IDAHO
36	FARMERS MARKETS
38	DISC GOLF
40	MOUNTAIN BIKING
42	BOISE PARKS
44	TREASURE VALLEY GYMS
46	RESTAURANTS
48	COFFEE SHOPS
50	BREWERIES
52	WINERIES

**Please note that event dates are subject to change
Hughes Real Estate Group & Silvercreek Realty Group are
not affiliated with nor sponsors of any of the events or
businesses listed in this Activity Guide.*



CLIMATE

Boise has a semi-arid continental climate with four distinct seasons. Boise experiences hot and dry summers with an average high of 91°F in July and an average low of 60°F. Winters are moderately cold with a December average high of 38°F and an average low of 24°F. Boise, on average, has 19 inches of snowfall throughout the winter months. Fall is typically brief, with the warm summer weather often drifting into the fall months. Spring is a more gradual transition in Boise with cold winter weather reappearing when you least expect it. The average amount of rainfall in Boise is 11.6 inches a year with most falling on warmer winter days and into the spring months.

SCHOOL DISTRICT

The Boise School District includes 33 elementary schools, 8 junior high schools, and 5 high schools. Part of the West Ada School District (now the largest in Idaho) is within the Boise city limits, and the city is therefore home to six public high schools: Boise, Borah, Capital, Timberline, the alternative Frank Church, and Centennial in Meridian.

POST-SECONDARY SCHOOLS

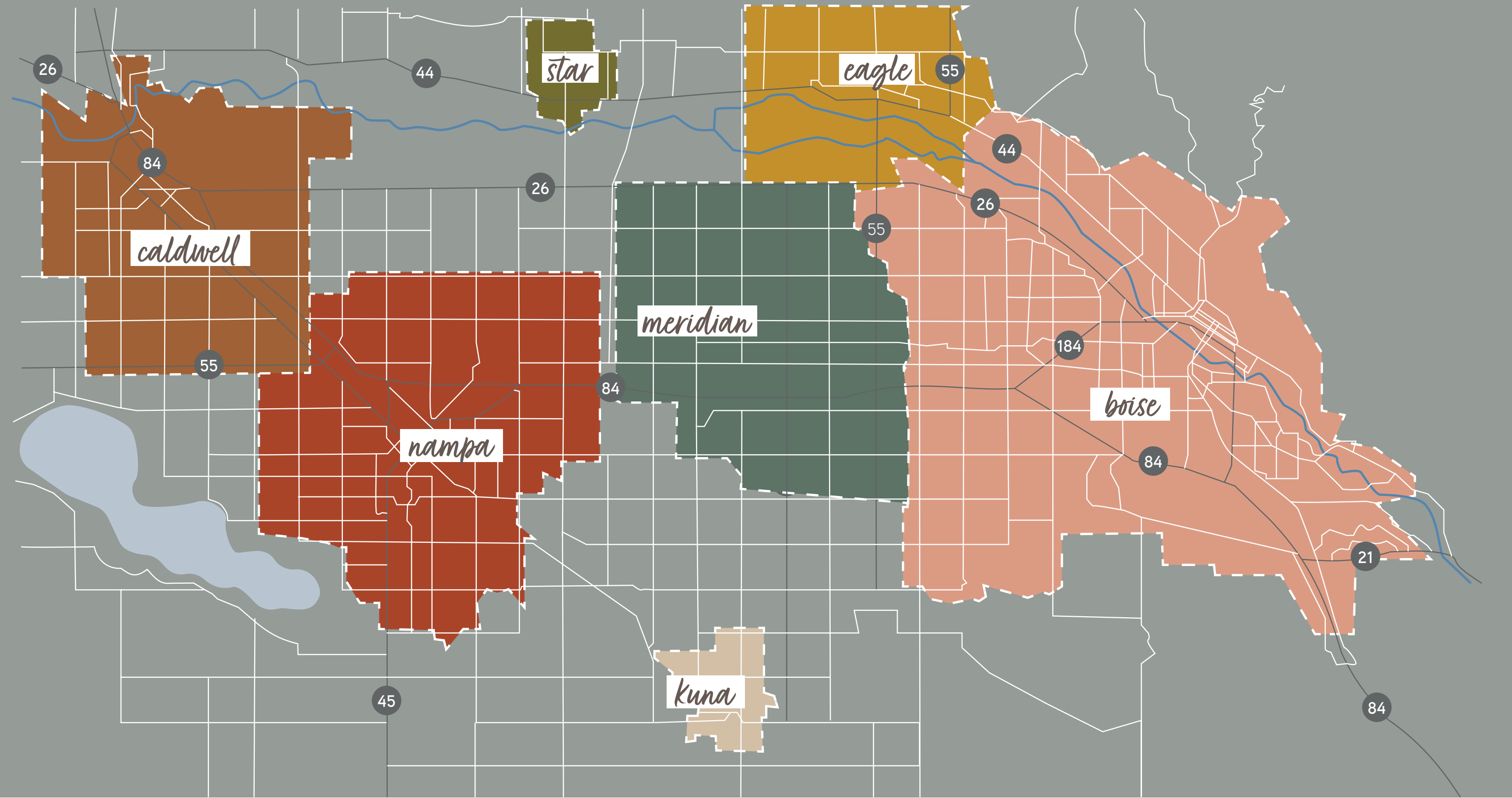
Post-secondary educational options in Boise include Boise State University (BSU) and a wide range of technical schools. The University of Idaho (UI) and Idaho State University (ISU) each maintain a satellite campus in Boise. As of 2014, the City has two law school programs. Concordia University School of Law opened in 2012, and the University of Idaho College of Law now hosts second and third year students at its Boise Campus.

TOP EMPLOYERS TO WORK FOR

1. Micron Technology, Inc.
2. Idacorp
3. JR Simplot
4. Albertsons
5. Chf
6. Cradlepoint
7. Albertsons Companies
8. Norco
9. Boise Cascade
10. Saint Alphonsus Regional Medical Center

Sources: [U.S. Climate Data](#) // [Wikipedia](#) & [lmi.idaho.gov](#) // [zippia.com](#)

TREASURE VALLEY MAP





TREASURE VALLEY COMMUNITIES

BOISE

The city of Boise is nestled in the Treasure Valley alongside the rolling foothills of the Boise Mountains. Known as the “City of Trees,” Boise is remarkably beautiful and boasts abundant area tree life complemented by the Boise River. Boise is known as a hot spot for recreationalists & outdoor adventurers alike and tops the list for ideal destinations accompanied by a slower paced lifestyle. The city of Boise attracts a diverse group of residents with a blend of outdoor activities, entertainment and business opportunities in technology, agriculture, healthcare, and industry. In addition, Boise also holds the title for the “Forbes 25 Best Places To Retire in 2019,” boldly ranking in at #3.

Boise, the capital city of Idaho, is a business development with a strong history of economic growth. Boise is noted as being “the best-kept secret in the Pacific Northwest” by USA Today and continues to raise the bar for economic achievements. Some of the area’s largest employers include Micron Inc., St. Luke’s Health Systems, Saint Alphonsus Health System, Wal-Mart Associates Inc, Albertsons, LLC, HP Inc, J.R. Simplot Company, Fred Meyer, Idaho Power Company, Wells Fargo Bank, N.A., Citi Corp, McDonald’s, Ataraxis, Inc, Blue Cross of Idaho, DirecTV, Jacksons Food Stores, YMCA, Scentsy, Inc, Xerox/WDS Global, Teleperformance, Hewlett Packard Enterprise Services, Sorrento Lactalis, Costco Wholesale Corp, CenturyLink, Amalgamated Sugar Company, Plexus Corp, Sykes, CTI SSI Food Service, and West Valley Medical Center.

Combine a lower crime rate with a strong business-friendly economy and the foundation for a truly remarkable community has been set. The heart of Boise is its tranquil atmosphere, stunning landscapes, and the culture that it creates. It has been said that what makes Boise the ideal destination is that it becomes more appealing the longer residents stick around. With so many opportunities for things to do and places to go, that statement encapsulates the core of Boise and what it means to live here.

EAGLE

From its beautifully diverse landscapes of plush tree-lined riverside beaches to the remote desert canyons that lie just beyond the foothills, the City of Eagle is distinctly beautiful. Find this community highly desirable for many reasons beyond its stunning landscapes. One of Eagle’s commonly unknown hidden treasures is that it shares a similar land size as its neighbor, the City of Meridian, though remains a smaller community with nearly one third the population.

Eagle offers the ideal mix of an established community with a fine selection of dining options, a museum, boutiques & shops, an arcade, local parks, as well as area trails and pathways. Complimented by its ideal blend of land use, the City of Eagle



boasts a remarkable selection of home styles and living accommodations. Discover the lifestyle that suits you best from riverside condos & flats to homes in the countryside, waterside or golf course living and a bit of everything in between. Escape to your very own in town retreat for a lifetime of memories.

Whether heading into town for a bite to eat, a day at the river, or an evening of entertainment, find countless indoor and outdoor activity opportunities within minutes. Living in the City of Eagle also proves beneficial in its relatively quick access to the bigger city amenities of the City of Boise, as well as straightforward access ideal for getting out of town towards the mountains. Whatever you enjoy, there is something in the City of Eagle for everyone. Check it out for yourself!

MERIDIAN

The City of Meridian sits as the heart of the Treasure Valley, nestled amid the valley's largest cities. Discover all that the City of Meridian has to offer from dining options to shopping opportunities as well as being centrally located for optimal commute times. Meridian is home to a plethora of community parks and outdoor activities, in addition to its strong healthcare presence, job opportunities, and endless entertainment options. There is so much to love when you choose to make Meridian home. The city of Meridian proves again and again to boast the ideal blend of amenities.

What are some of the top reasons people consider a move to Meridian, Idaho? Whether it be good schools, quality healthcare, quality of life, the job market and access to well-paying careers, and

the many reasons people choose to move, there truly is something for everyone in Meridian. It gets brisk in the winters here, though living in an area with four distinct seasons is more than enough to make up for it!

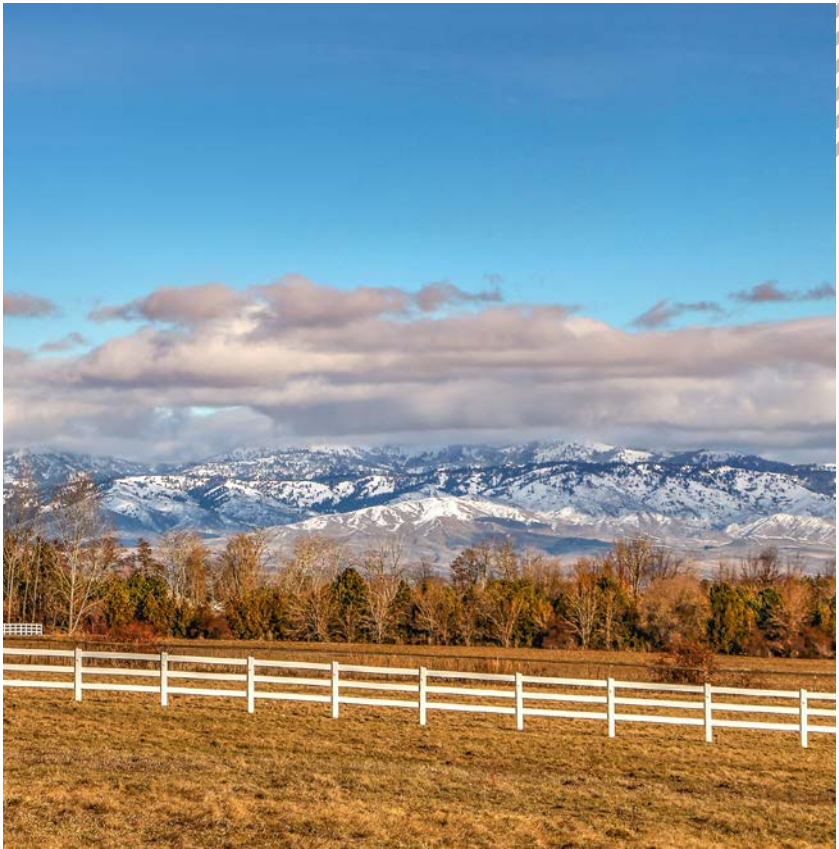
Living in Meridian can very possibly mean finding the very things that help make life more enjoyable. How about heading out on the town for a sizzling mix of fine dining options or a delicious homestyle meal, enjoying a sunny day at a local park, or maybe a relaxing evening at the movies? The best part of living in Meridian is that being a part of all that makes up Idaho. Stretching beyond the city and into the sprawling boundaries of Idaho opens up another world of possibilities. There's a lifetime of places to go and things to do.

How about escaping for the holidays to a mountain retreat, or a week rafting the Salmon River? What about exploring an old ghost town filled with historic treasures, heading over to award-winning wineries, or finding yourself traveling across the plains where the wild horses roam and prairie lands are so vast, they stretch out across the horizon? Life is better in Idaho and now it's time to find all the reasons why you'll enjoy living here so much!

STAR

The City of Star is a flourishing community of growth combined with the delicate balance of nature. This delightful city boasts a hometown feel of knowing your neighbors combined with an atmosphere of small-town charm. Delight in weekends packed with fun or simply enjoy the peace and quiet of utter relaxation in the comfort of home. Save time cooking and head out to one of the local eateries for savory home-style cooking and tasty treats. Star also offers local area shopping options and things to do.

Enjoy area amenities with things to do including a selection of community classes, the library, sports leagues, a community center, skate park, and the popular Star's Hometown 4th of July Celebration event. Be sure to check out the Star RiverWalk, a popular year-round destination surrounded by nature and ideally located adjacent to the graceful Boise River. The pathway is lined with dense greenery and is popular for its area



birdlife including the Great Blue Heron, Bald Eagle, Osprey, Wood Ducks and more! The Boise River is also a popular destination for those warm summer days ideal for enjoying a day at the water. There's more! Find time to head over to one of the local community parks or the expansive sports park ideal for a picnic or a BBQ and a game!

The sky's the limit for weekends in and around the City of Star! Enjoy a day exploring area shops, going to the salon, and possibly head into the City of Boise for a movie and a night out. Living in the city of Star can mean enjoying a quaint community feel with larger city amenities minutes away. Star is situated in the Treasure Valley which also boasts nearby cities including Boise, Meridian, Eagle, Middleton, Kuna, Nampa, and Caldwell to name a few. Lavish in the luxuries of home in the countryside or close to downtown, whichever you prefer, when you choose to live in the inviting city of Star.

KUNA

The City of Kuna could easily be described as “big

city meets big country” and offers a quick escape from any urban apprehension. Delight in sprawling vistas, various parks, the historical museum & performing arts center, a selection of wineries, as well as a seasonal creek for waterside enjoyment. For additional outdoor activity opportunities, a bit further out, you may enjoy a day at Lake Lowell and the Deer Flat Wildlife Refuge or trekking over to the Snake River Birds of Prey Area that sits alongside the stunning Snake River. There's so much to do in and around the City of Kuna. The options are endless!

Kuna boasts a relatively smaller population of around 19,000 residents and growing, which makes for an excellent opportunity to live in a community of familiar names and faces, while still getting to know new residents! Kuna retains a tight-knit community feel and offers access to big city amenities like that of the much larger City of Boise, Meridian, and Nampa, with travel times ranging in at about an hour or so depending on the desired destination.

Spend your time enjoying the perks of living in a smaller city starting with a lower median



home price than that of those in the larger surrounding cities. You may also enjoy less in-town traffic and congestion, the freedom to enjoy a slower paced lifestyle if you so choose, as well as the many other perks associated with small-town charm. Enjoy the culture that the City of Kuna creates and the freedom to decide how best to spend your days and evenings living in the countryside.

NAMPA

The City of Nampa is a flourishing community of steady economic growth combined with a strong presence of community. The pinnacle of Nampa's notoriety remains the highly sought-after lower cost of living it provides. Nampa boasts a surplus of area amenities, entertainment options and indoor & outdoor activity opportunities. Nampa features 20+ community parks, abundant shopping opportunities including the Karcher Mall and the Treasure Valley Marketplace, a skating rink, museums, multiple movie theater options, a recreation center and more! Living in the City of Nampa brings with it an ideal combination of work and play. Find time to enjoy Lake Lowell and the Deer Flat National Wildlife Refuge, or you may want to consider heading over to the nearby Snake River and the Morley Nelson Snake River Birds of Prey Area.

The City of Nampa is a treasure trove of economic opportunity reaching out into health care and social assistance, manufacturing, retail trade, construction, educational services, and other services. The largest employers in Nampa include Amazon, Wal-Mart Associates Inc., St. Alphonsus Medical Center Nampa, Plexus Corp., Sorrento Lactalis, Northwest Nazarene University, Amalgamated Sugar Co., Great American Snacks, St. Luke's Regional Medical, Woodgrain Millwork Inc., Mission Aviation Fellowship, Heartland RV, Materne North America, ON Semiconductor, Assisted Living of Idaho, Pacific Press Publishing, Fleetwood Homes Inc., Mirage



Enterprises Inc., and HB Specialty Foods.

Enjoy a four seasons destination with the perks of Spring, Summer, and Fall fun activities like strolling the area pathways, boating, golfing, hunting, fishing, horseback riding, or possibly heading over to Lakeview Water Park for water fun or Midway Sports Park ideal for sports activities galore. What about year-round indoor and outdoor concerts, rodeos, and events? You may consider heading over to the Idaho Ford Center for a large selection of events. Have you always wanted to learn how to fly? The Nampa Municipal Airport is used for private, emergency, military, and industrial aviation. During the colder months, you may consider checking out all the Downtown Nampa shopping and dining options or discovering the expansive Nampa Library.

Additional year-round activities also include enjoying all that the Nampa Recreation Center and the Nampa Civic Center have to offer. Or maybe consider taking a semester of classes at the local university or college campus. Whatever you may enjoy Nampa has something for everyone. Discover all that Nampa has to offer you!

CALDWELL

Take a moment to be introduced to a wealth of the beautiful landscapes within the City of Caldwell. From the rolling green hills lined delicately with vineyards, groves, and orchards, to the valley's floor that is graciously complimented by the winding waters of the magnificent Boise River. Downtown Caldwell is ideally accented by the gentle waters of Indian Creek, a popular destination for those touring area shops and eateries. Find time to enjoy a self-guided tour of this area for an enjoyable day out on the town. This beautifully diverse growing region is filled with warm, fun-filled sunny days, evenings accented with low lying fog, and a hint of snow in the colder months. It's easy to feel spoiled when surrounded by Idaho's fascinating natural settings and breathtaking destinations. Escape to the countryside for stunning scenic landscapes



and views across the valley to the peaks of the Owyhee Mountains.

The beautiful City of Caldwell is complimented well with generous indoor and outdoor activity opportunities; from a day touring the wineries, to an evening at the golf course, there is something for everyone. The Canyon County Fairgrounds is a popular location for year-round events like rodeos and the fair. Discover destinations like the local college well known for its planetarium, art gallery, and the 850-seat proscenium house. Searching for adventure close to home? Explore the skies above Caldwell with a day starting at the Caldwell Airport, and then heading off to enjoy an exciting day skydiving.

Caldwell is packed with things to do! Find outdoor activity opportunities including fishing, hunting, water activities, various local parks, area OHV trails, and a shooting range. Consider checking out indoor activities that include a choice of movie theaters, an arcade, or exploring the various museums. Take a moment to feel like you've stepped back in time when you discover the local drive-in theatre or find yourself enjoying a historic tour of the remarkable downtown buildings and train depot. For those who enjoy the simple pleasures of an afternoon on the water surrounded by lush landscapes, you may want to consider heading over to the beautiful Lake Lowell. This highly desirable destination is ideal for enjoying area birdlife complimented by the rich warm colors of an evening sunset.

[Written by Karen Veloz]

FIRST THURSDAY

art, music, in-store promotions,
wine tastings & more

DOWNTOWN BOISE • EVERY MONTH 5PM - 9PM
IN-STORE ENTERTAINMENT • FINE & CASUAL DINING • WINE & BEER TASTINGS
LOCAL ART • LIVE MUSIC • SPECIAL EVENTS
DOWNTOWNBOISE.ORG

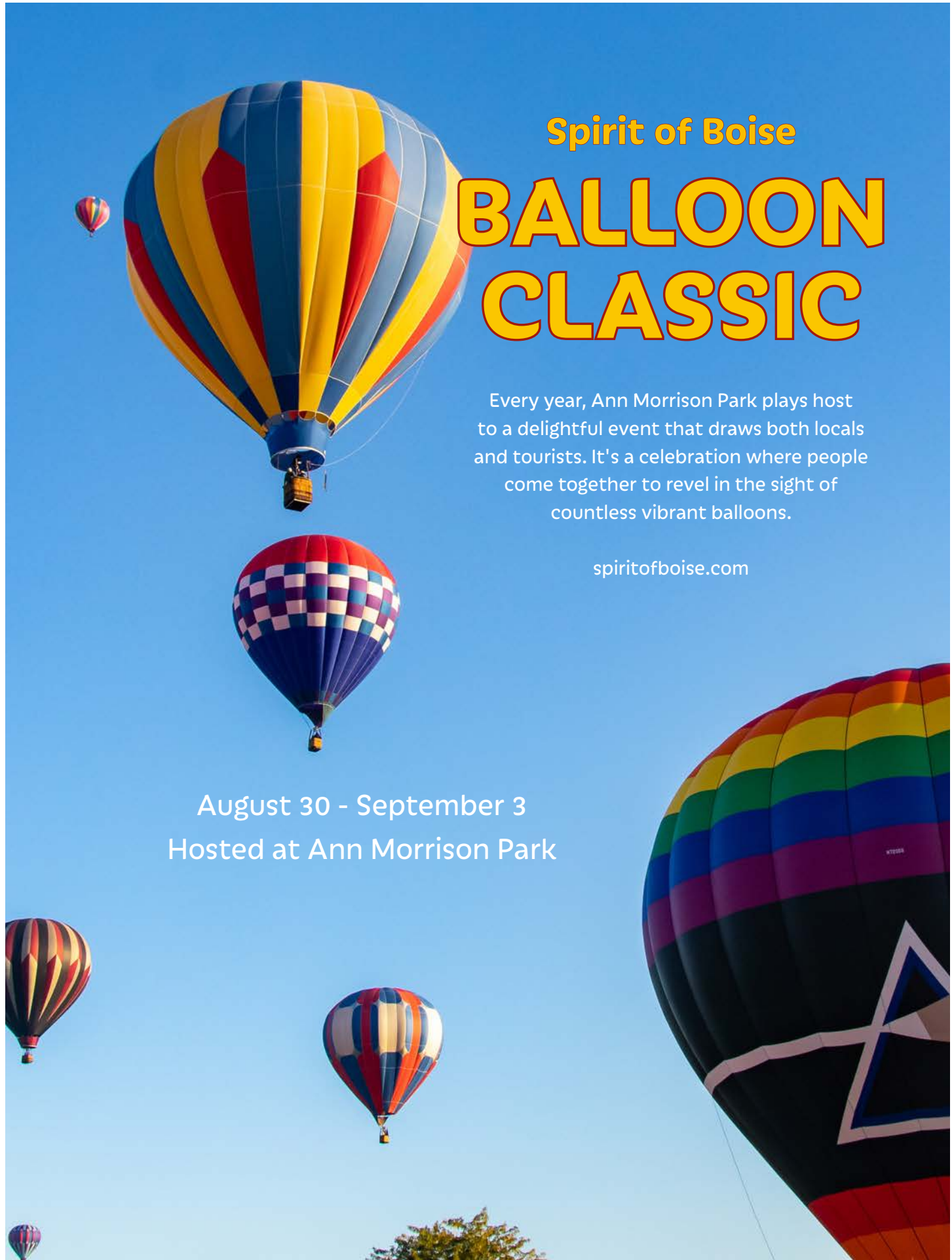
Indulge BOISE



IDAHO'S CULINARY & CULTURAL FOOD TOURS

Expert tour guides for a culinary adventure through iconic neighborhoods & indulge at the best restaurants in your favorite Idaho cities. Year-round & family-friendly. VIP Private Tour experiences also available.

VISIT [INDULGEBOISE.COM](https://www.indulgeboise.com)
FOR MORE INFORMATION



Spirit of Boise

BALLOON CLASSIC

Every year, Ann Morrison Park plays host to a delightful event that draws both locals and tourists. It's a celebration where people come together to revel in the sight of countless vibrant balloons.

spiritofboise.com

August 30 - September 3
Hosted at Ann Morrison Park



Lowe Family Farmstead

2023 FALL SEASON

September 16 - October 30

corn maze, pumpkin patch, hayrides,
u-pick flower field, and more!

LoweFamilyFarmstead.com



WINE SAFARI

Thursday, September 14th
5:30-7:30 PM

Experience an unforgettable day at the zoo alongside your favorite animals!

Indulge in the finest wines from across the globe, while also immersing yourself in exclusive VIP animal talks, tours, and encounters. Delight in light appetizers that will be served throughout the event. To ensure an intimate and enjoyable experience, guests will be organized into small groups and rotate between different regions. This is a 21+ event. Tickets are \$150.

zooboise.org

MERIDIAN ART WEEK SEPTEMBER 16-23

LAUNCH PARTY
SEPTEMBER 16
5:00-8:00PM
33 E Broadway Ave
Downtown Meridian

This vibrant week-long celebration will showcase an array of activities, all centered around the essential role art plays in infusing life and energy into the city.

2nd Annual



Local Hops • Live Music • Hop Harvest Tours

Saturday, September 29

1:00-5:00 PM

Indian Creek Plaza • Caldwell

Indian Creek Plaza

DOGTOWERFEST

SATURDAY, OCTOBER 7

1:00 - 5:00 PM

DOG SHOW

FOOD & BEER

MUSIC



Celebrate dogs, beer, and fun this October at Indian Creek Plaza! Leashed pups can join the Oktoberfest-themed event, taste seasonal brews, and run through our Splash Pads. Don't miss out!

indiancreekplaza.com/dogtoberfest

Idaho
Botanical Garden

FALL HARVEST DAYS

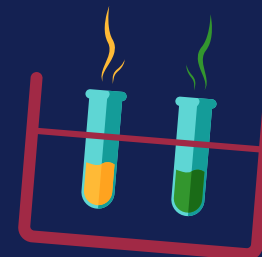
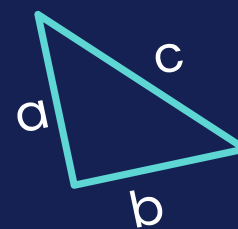
Every Saturday in October
10am-3pm

[idahobotanicalgarden.org/
harvestfestival](https://idahobotanicalgarden.org/harvestfestival)



KIDS DISCOVERY EXPO

NOVEMBER 11
10AM-4PM
EXPO IDAHO



Experience the Kids Discovery Expo: a one-day event packed with entertainment and activities for kids aged 2-12. Enjoy interactive exhibits, bounce houses, virtual reality, and more at Expo Idaho this fall!
Fun for the whole family!



Saturday
Sept 23 • 2pm-9:30pm
6th Street Between Main and Front
Local & German Oktoberfest Bier, Pretzels, Brats,
Music, Vendors, Kids Zone



NAMPA CIVIC CENTER

CRAFT & CHOCOLATE AFFAIRE

Indulge in a diverse array of over 90 Artisans - there's something for everyone! Whether you adore chocolate or enjoy bazaars, this cherished event marks the start of the holiday season.

November 3
5PM- 9PM
November 4
10AM - 4PM



INDIAN CREEK PLAZA

Winter Wonderland

Opening Weekend Event
Friday to Sunday
November 17-19, 2023
6:00 PM - 9:00 PM

IndianCreekPlaza.com

AUTUMN IN IDAHO

Autumn in Idaho brings a tapestry of vibrant colors, cooler temperatures, and a range of outdoor activities that take advantage of the picturesque landscapes.

No matter your interests, Idaho's autumn activities offer something for everyone to enjoy the crisp air, stunning colors, and the festive spirit of the season.

Idaho's autumn weather can vary, so it's always a good idea to check the weather forecast and trail conditions before heading out on any outdoor activities. Whether you're seeking adventure, relaxation, or cultural experiences, autumn in Idaho offers a wide range of options to make the most of this colorful and inviting season.

Here are some of the main autumn activities you can enjoy in Idaho...



Fall Foliage Drives:

As the leaves change colors, taking scenic drives through Idaho's forests and mountainous regions is a popular autumn activity. Areas like the Sawtooth National Recreation Area, Teton Valley, and the scenic byways near Boise offer breathtaking views of fall foliage.

Hiking and Backpacking:

Autumn provides comfortable temperatures for hiking and backpacking in Idaho's national parks, forests, and wilderness areas. Trails that may be too hot in summer become more inviting, and the changing leaves add an extra layer of beauty to the landscapes.

Fruit Picking & Farm Visits:

Many orchards and farms in Idaho offer apple, pumpkin, and other fruit picking opportunities during the fall. Visiting these locations is a great way to experience the bounty of the season and enjoy farm-fresh produce.

Festivals and Events:

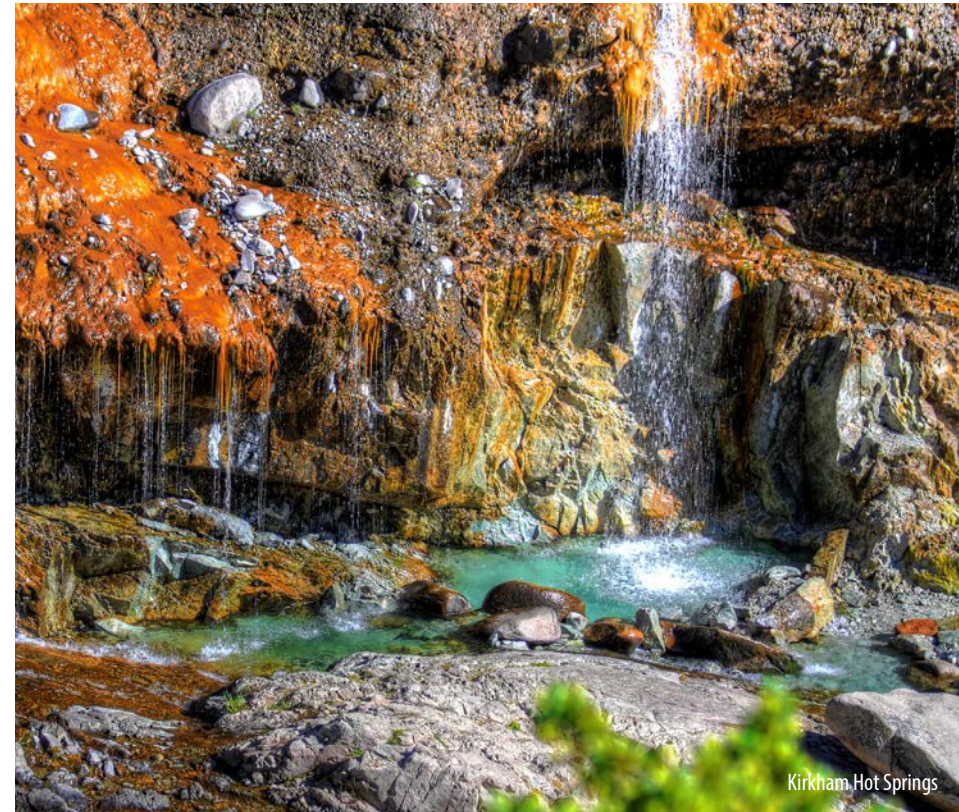
Autumn in Idaho is marked by various festivals and events celebrating the harvest season. From Oktoberfest celebrations to fall fairs and pumpkin festivals, you'll find plenty of community gatherings and activities across the state.

Fishing:

Fall is an excellent time for fishing in Idaho's rivers, lakes, and streams. As the water cools down, fish become more active, making it a prime time for anglers to enjoy their favorite pastime.

Mountain Biking:

Idaho's mountain biking trails remain open well into the fall. The cooler temperatures and stunning fall scenery make autumn an ideal time to explore the state's diverse mountain biking trails.



Photography:

With the changing leaves, clear skies, and stunning landscapes, autumn is a photographer's dream. From capturing reflections on still lakes to the golden hues of aspen groves, the opportunities for striking photos are endless.

Hot Springs:

Idaho is known for its natural hot springs, and autumn provides a perfect opportunity to relax and unwind in these soothing waters while surrounded by fall beauty.

Wildlife Viewing:

Fall is also a great time for wildlife viewing as animals prepare for the winter months. Keep an eye out for deer, elk, and other wildlife in various natural areas.

Wine Tasting:

Idaho's burgeoning wine industry offers wine enthusiasts a chance to explore vineyards, taste local wines, and enjoy the scenic landscapes of the wine country during the fall season.

Camping:

Fall camping can be a peaceful and enjoyable experience as campgrounds are often less crowded. Whether you prefer tent camping, RV camping, or even backcountry camping, Idaho's diverse landscapes offer a range of options.

Bird Watching:

Autumn is a great time for bird watching as many migratory birds pass through or stop in Idaho on their way to warmer climates. Grab your binoculars and explore birding hotspots like the Snake River Birds of Prey National Conservation Area.



FARMERS

MARKET

... SUPPORT LOCAL ...

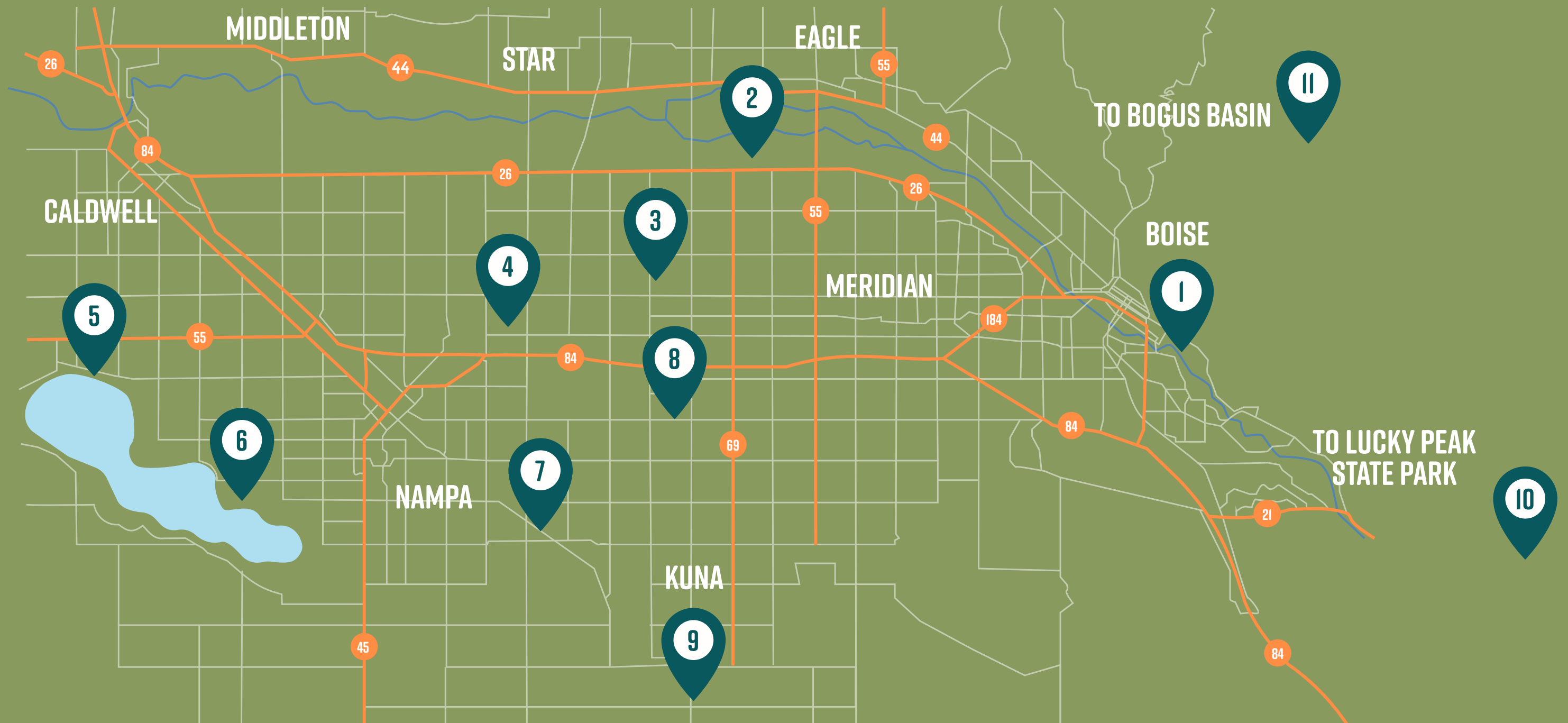
BOISE FARMERS MARKET APRIL - OCTOBER	1500 SHORELINE DR. SATURDAYS 9AM - 1PM
CAPITAL CITY PUBLIC MARKET APRIL - DECEMBER	8TH ST. • DOWNTOWN BOISE SATURDAYS 9:30AM - 1:30PM
CALDWELL FARM TO FORK FARMERS MARKET MAY - SEPTEMBER	INDIAN CREEK PLAZA TUESDAYS 5PM - 9PM
CASCADE FARMERS & FLEA MARKET MAY - SEPTEMBER	1455 S. MAIN STREET (HWY 55) THURSDAY - SUNDAY 9AM - 5PM
EAGLE SATURDAY MARKET MAY - OCTOBER	HERITAGE PARK • EAGLE SATURDAYS 9:00AM - 2PM
EMMETT FARMERS MARKET JUNE - OCTOBER	BLASER PARK • DOWNTOWN EMMETT WEDNESDAYS 3PM - 6PM & SATURDAYS 9AM - 1PM
MCCALL FARMERS MARKET JUNE - MID OCTOBER	DOWNTOWN 2ND STREET • MCCALL WEDNESDAY 10AM - 1PM & SATURDAYS 10AM - 1PM
MOUNTAIN HOME FARMERS MARKET MAY - OCTOBER	RAILROAD PARK DOWNTOWN / MAIN ST. SATURDAYS 8AM - 1PM
NAMPA FARMERS MARKET APRIL - OCTOBER	FRONT ST. & 13TH AVE. • NAMPA SATURDAY 9AM - 1PM
WEISER FARMERS MARKET MID AUGUST - END OF SEPTEMBER	WEISER TRAIN DEPOT • WEISER THURSDAYS 5:00PM - 7:30PM

DISC GOLF COURSES

IDAHO PARKS AND RECREATION

1. ANN MORRISON PARK
2. EAGLE ISLAND STATE PARK
3. SETTLERS PARK
4. COLLEGE OF WESTERN IDAHO
5. MALLARD PARK
6. LAKE LOWELL PARK

7. OSBORNE PARK
8. BEAR CREEK PARK
9. KUNA PARK
10. SANDY POINT BEACH
LUCKY PEAK STATE PARK
11. BOGUS BASIN





- 01**
BALLINGER FLAT TRAIL | MOUNTAIN HOME | 0.6MI ●
A short side trip past a spring to overlook the South Fork Boise River with access from Danskin Trail #340. The view from the canyon rim is well worth the ride.
- 02**
THE WASH TRAIL | EMMETT | 1.6MI ●
This trail runs down “The Wash” from East Perimeter Trail down to Little Gem Service Road with hundreds of options to ride other connecting trails up both sides of the valley. Though most are quite steep and slick, hidden gems await your discovery.
- 03**
AROUND THE MOUNTAIN | BOISE | 9.8MI ■
A great loop around Bogus Basin Ski Resort with amazing views all the way to Sawtooths and down into Boise. Moderate climbs, great berms and fast descents. The trail is well marked and connects to many other trails to create many other options.
- 04**
THUNDER MONKEY | BOISE | 15.6MI ■
Beautiful alpine ride through MTB country with climbs, breathtaking descents, wood and stone features, and excellent backcountry single track. Connect the Shafer Butte system with Mahalo and Dry Creek. *Note: This is a shuttle ride unless you're into pedaling up 14 miles back to the ski area on Bogus Basin road after the descent.*
- 05**
GREENHORN GULCH ADVENTURE | KETCHUM | 22.6MI ■
A stunning western landscape with narrow singletrack and a riot of springtime wildflowers. An excellent destination for eMTBing located just south of Sun Valley, ID. The majority of the trails in the network are open to eMTBs, allowing for multiple loops that vary from 30 minutes to all day.
- 06**
BB BOMBER | BOISE | 27.3MI ■
A great shuttle run that will take you through the vast pines of Bogus Basin, past iconic Stack Rock and finish up on an open, flowing single track. *Note: Dogs may be allowed off-leash on this trail.*
- 07**
TABLE ROCK TECH | BOISE | 3.6MI ◆
One of the best ways to experience the rocky trails in the Boise area. This ride starts from the top of Table Rock and can either be shuttled, or you can climb one of the numerous trails in the Table Rock system to its start. *Note: Dogs may be allowed off-leash on this trail.*
- 08**
THE BIG POTATO | BOISE | 41MI ◆
The earliest this trail can be accessed is in Mid to Late May, depending on snow conditions. This ride is one of the best ways to experience the foothills outside of Boise. *Note: Be prepared with food and water as Simplot lodge is the only stop along the way that may have access to supplies.*
- 09**
COYOTE CLASSIC RACE COURSE | EAGLE | 48MI ◆
This is the 2012 Race Course that tours some of the best single track and views in the Avimor trail system. *Note: You'll find cows grazing in some of the more remote areas so please be aware of your surroundings.*

Best Parks

ANN MORRISON PARK

1000 N. AMERICANA BLVD • BOISE

153 Acres • Spray Fountain • Gardens • Playground • Tennis Courts • Softball Diamonds • Practice fields • Picnic Pavilion • Riverside Access for Anglers • Outdoor Gym • Pedestrian Bridge to Downtown Boise • Sand Volleyball Courts • Greenbelt Access

BOISE RIVER PARK

WHITEWATER PARK BLVD / FAIRVIEW AVE • BOISE

An ideal spot for surfing or kayaking the “wave” of the Boise River, or for watching from the Greenbelt

BORAH PARK

801 S AURORA DRIVE • BOISE

13 Acres • Outdoor Community Pool • Splash Pad • Picnic Pavilion • 2 Playgrounds

CAMEL’S BACK PARK

1200 W HERON STREET • BOISE

Tennis Courts • Sand Volleyball Courts • Picnic Area • Playground • Outdoor Gym • Foothills Access • Practice Fields

EAGLE ISLAND STATE PARK

165 S EAGLE ISLAND PKWY • EAGLE

Swimming Beach • Waterslide (Open Memorial Day Weekend ~ Labor Day) • Playground • Charcoal Grills • Fishing • Volleyball Courts • Disc Golf Course • Horseshoe Pits • 2 Picnic Pavilions • Visitor’s Center • Paddleboard Rentals

ESTHER SIMPLOT PARK

614 WHITEWATER PARK BLVD • BOISE

Fishing • Dog Off-Leash Area • Trails • Docks • Wetlands Boardwalks • Grassy Open Areas • Playground • Open Play Areas

JULIA DAVIS PARK

700 S CAPITOL BLVD • BOISE

Home to Zoo Boise • Boise Art Museum Idaho State Historical Museum • Discovery Center of Idaho • Rose Garden • Bronze Sculptures • Playground • Picnic Pavilions • Tennis Courts • Greenbelt Access

PARKS.CITYOFBOISE.ORG

Esther Simplot Park



SPECIALTY GYMS

GENERAL FITNESS

ASANA CLIMBING GYM
Garden City | AsanaClimbingGym.com

ARBOR CROSSFIT
Boise | CrossfitArbor.com

BOISE CROSSFIT
Boise | BoiseCrossfit.com

CAMP RHINO CROSSFIT
Boise | CampRhino.com

MMA GYM
Boise | SBGIdaho.com

VERDANT CROSSFIT
Boise | VerdantFit.com

ANYTIME FITNESS
Across The Valley | AnytimeFitness.com

AXIOM FITNESS
Boise & Meridian | AxiomFitness.com

CRUNCH
Across The Valley | Crunch.com

GROVE FITNESS CLUB & SPA
Boise | Grovefitness-Spa.com

IDAHO FITNESS FACTORY
Boise & Meridian | IdahoFitnessFactory.com

JACK CITY FITNESS
Boise | JackCityFitness.com

JOHNNY'S FIT CLUB
Boise | FitClubBoise.com

KVELL FITNESS & NUTRITION
Boise & Meridian | KvellFit.com

PLANET FITNESS
Boise & Garden City | PlanetFitness.com

THE MECCA GYM
Eagle | TheMeccaGym.com

RESTAURANTS



boise

Alavita 807 W Idaho St	Fanci Freez 1402 W State St
ALYONKARUSSIANCuisine 2870 W State St	Fork 199 N 8th St
Barbacoa Grill 276 West Bobwhite Ct	Goodwood Bbq Co. 7849 W Spectrum St
Bardenay 610 W Grove St	Hawkins Pac-Out 2315 N Bogus Basin Rd
Basque Market 608 W Grove St	Lemon Tree 224 N 10th St
Big Jud's 1289 S Protest Rd	Lock Stock & Barrel 1100 W Jefferson St
BittercreekAlehouse 246 N 8th St	Mai Thai 750 W Idaho St
Brickyard 601 W Main St	WILD ROOT 276 N 8th St
Chandler'sSteakhouse 981 W Grove St	Willowcreek Grill 2273 S Vista Ave #150
Cucina Di Paolo 1504 S VISTA AVE	YoiTomoSushi&Grill 405 S Capitol Blvd

eagle

Ahi Sushi Bar 1193EWindingCreekDr	Perks Of Life 1540 E Iron Eagle Ln
Bacquet's 1117EWindingCreekDr	Porterhouse Market 600 S Rivershore Ln
BodaciousPigBarbecue 34 E State St	Rembrandts 93 S Eagle Rd
CACiWood-FiredGrill 1592 E Riverside Dr	Rice Contemporary Asian Cuisine 228 E Plaza st
Coyne's 676 E Riverside Dr	Rib Shack Barbecue 395 W State St
CRAVE 165 E Colchester Dr	Schnitzel Garten 1225EWindingCreekDr#130
daVinci's 190 E State St	The Stuffed Olive 404 S Eagle Rd
HOLY COW 1396 E State St	Squeeze In 228 E Plaza Dr Suite F
Mongolian Of Eagle 362 S Eagle Rd	Wild West Home Of Mamma Italia 83 E State St #5928
Oak Barrel Of Eagle 1065EWindingCreekDr	

meridian

Casa del Matador 3690 E Monarch Sky Ln	KONA GRILL 3573ELONGWINGLN#140
DALTON ROYAL 3161 E Ustick RD #110	LAND OCEAN 2902 N EAGLE RD
Epi'sBasqueRestaurant 1115 N Main St	Ling & Louie's 3210 E Louise Dr
Fat Guy's Fresh Deli 1626 S Wells Ave	Louie's Pizza & Italian 2500 E Fairview Ave
Gino's Italian 3015 W McMillan Rd #108	Lucky Fins 1441 N Eagle Rd
Gramercy Park Pizza 1626 S Wells Ave #115	Moe Joe's 12951 E Overland Rd
Grant'sNeighborhoodGrill 1835 W Cherry Ln	Ram 3272 E Pine Ave
Homestead Bar & Grill 1441 N Eagle Rd	Sa-Wad-Dee 1890 E Fairview Ave
Johnny Bronx Pizza 4970 N Linder Rd	Sockeye Brewing 12542 W Fairview Ave
KahootzSteak&AleHouse 1603 N Main St	Terri's Cafe 2483 E Fairview Ave

nampa

Aguillilla Restaurant 324 11th Ave N	JP Thailand Express 2025 12th Ave Rd
ALOHAISLANDGRILL 140 Caldwell Blvd	KrungThaiRestauran 3008 Garrity Blvd
BandidosMexicanGrill 16462 N Franklin Blvd	LeBaron'sHonkerCaf 1210 2nd St S
Beefy's 1104 Garrity Blvd	Lamai Thai Food 453 Caldwell Blvd
Blazen Burgers 216 1st Ave S	LittleSaigonVietnames 1305 2nd St S #100
Brick 29 Bistro 320 11th Ave S #300	Messenger Pizza 1224 1st St S
DICKEY'S BBQ PIT 16565NMarketplaceBlvd	MingHaoRestaurant 3107 Garrity Blvd
Dos Caminos 908 3rd St S	Pacific Sushi 624 12th Ave S
Holy Cow Idaho! 1226 1st St S	The Tower Grill 105 Municipal Dr
Island Kine Grinds 140 Caldwell Blvd	Wheeler's Handout 215 Caldwell Blvd

BREWED LOCALLY



alchemist coffee

10650 W OVERLAND RD BOISE, ID 83709
ALCHEMISTCOFFEE.COM

big city coffee & cafe

1416 W GROVE ST, BOISE, ID 83702
BIGCITYBOISE.COM

coffee studio

8205 W RIFLEMAN ST BOISE, ID 83704

dawson taylor

1035 S LUSK ST, BOISE, ID 83706
219 N 8TH ST, BOISE, IDAHO 83702
DISTRICTCOFFEEHOUSE.COM

flying m coffee

500 WEST IDAHO ST #100, BOISE, ID 83702
1314 2ND ST SOUTH, NAMPA, ID 83651
724 ARTHUR ST, CALDWELL, ID 83605
FLYINGMCOFFEE.COM

form & function

511 W BROAD ST, BOISE, ID 83702
FORMANDFUNCTIONCOFFEE.COM

java coffee shop

223 N 6TH SUITE 110 BOISE, ID 83702 (DOWNTOWN)
1612 N 13TH ST BOISE, ID 83702 (HYDE PARK)
JAVAIDAHO.COM

mocha moose coffee

2596 N BOGUS BASIN RD, BOISE, ID 83702

push and pour

214 EAST 34TH ST, GARDEN CITY, ID 83714
PUSHANDPOUR.COM

slow by slow

405 S 8TH ST, BOISE, ID 83702
SLOWBYSLOW.COM

the district coffee house

219 N 10TH ST BOISE, ID 83702
DISTRICTCOFFEEHOUSE.COM

GRAFT BREWERIES

YOU MUST BE 21 YEARS OLD TO PURCHASE OR CONSUME ALCOHOLIC BEVERAGES



BARBARIAN BREWING
5270 W Chinden Blvd, Garden City

BARBARIAN BREWING
1022 W Main St, Boise

10 BARREL BREWING CO
816 W Bannock St, Boise

BEAR ISLAND BREWING CO
1620 N Liberty St, Boise

BOISE BREWING
521 W Broad St., Boise

CLAIRVOYANT BREWING CO
9115 W Chinden Blvd, Garden City

CLOUD 9 BREWERY
1750 W State St., Boise

CRESCENT BREWERY
1521 Front St., Nampa

EDGE BREWING CO
525 N Steelhead Way, Boise

THE GROWLER GUYS
2020 E Overland Rd., Meridian

HIGHLANDS HOLLOW BREWING
2455 Harrison Hollow Blvd., Boise

LOOSE SCREW BEER CO
1511 W McMillan Rd, #100, Meridian

LOST GROVE BREWING
1026 S La Pointe St, Boise

MAD SWEDE BREWING CO
2772 S Cole Rd #140 ,Boise

MOTHER EARTH BREWING CO
1428 Madison Ave., Nampa

PAYETTE BREWING
733 Pioneer St., Boise

POWDERHAUS BREWING CO
9719 W Chinden Blvd., Garden City

RAM RESTAURANT & BREWERY
709 E Park Blvd, Boise

RAM RESTAURANT & BREWERY
3272 E Pine Ave, Meridian

SOCKEYE BREWING
12542 W FAIRVIEW AVE, BOISE

WESTERN COLLECTIVE
111 W 33rd St, Garden City

WHITE DOG BREWING
705 W Fulton St, Boise

3 HORSE RANCH VINEYARDS
5900 PEARL RD, EAGLE

BITNER VINEYARDS
16645 PLUM RD, CALDWELL

BODOVINO
404 S 8TH ST, BOISE

CINDER WINES
107 E 44TH ST, GARDEN CITY

COILED WINES
3408 W CHINDEN BLVD, GARDEN CITY

DUDE DEWALT CELLARS
5446 ID-16, Eagle

HELLS CANYON WINERY
18835 SYMMS RD, CALDWELL

HUSTON VINEYARDS
16473 CHICKEN DINNER RD, CALDWELL

INDIAN CREEK WINERY
1000 N MCDERMOTT RD, KUNA

KOENIG VINEYARDS
21452 HOSKINS RD, CALDWELL

SAWTOOTH WINERY
13750 SURREY LN, NAMPA

SPLIT RAIL WINERY
4338 W CHINDEN BLVD, GARDEN CITY

STE. CHAPELLE WINERY
19348 LOWELL RD, CALDWELL

TELAYA WINE CO.
240 E 32ND ST, GARDEN CITY



YOU MUST BE 21 YEARS OLD TO PURCHASE OR CONSUME ALCOHOLIC BEVERAGES

LOCAL WINERIES

HOW FAR FROM BOISE IS...



WHAT'S THE WEATHER LIKE IN BOISE?

	RECORD HIGH °F	AVG HIGH °F	AVG LOW °F	RECORD LOW °F	RAIN INCHES
JAN	63°	38°	25°	-28°	1.24"
FEB	71°	45°	28°	-15°	1.03"
MAR	82°	55°	34°	5°	1.39"
APR	92°	62°	39°	11°	1.23"
MAY	100°	72°	47°	22°	1.39"
JUN	109°	81°	54°	30°	.69"
JUL	111°	91°	60°	35°	.33"
AUG	110°	90°	60°	32°	.24"
SEP	102°	79°	51°	23°	.58"
OCT	94°	65°	41°	11°	.75"
NOV	78°	48°	32°	10°	1.35"
DEC	70°	37°	24°	-25°	1.55"

Annual high temperature: 63.7°F
Annual low temperature: 41.3°F
Average temperature: 52.5°F
Average annual precipitation - rainfall: 11.66"
Average annual snowfall: 19"

Source: worldclimate.com/climate/us/idaho/boise

IDAHO IS BEAUTIFUL

