



HUGHES REAL ESTATE GROUP OF SILVERCREEK REALTY GROUP

TREASURE VALLEY

SEASONAL ACTIVITIES GUIDE

2023-24 WINTER EDITION



BOISE | BRUNEAU | CALDWELL | CAMBRIDGE | CASCADE | COUNCIL | DONNELLY | EAGLE | EMMETT | FALL CREEK
FEATHERVILLE | FRUITLAND | GARDEN VALLEY | GLENNS FERRY | GRAND VIEW | GREENLEAF | HOMEDALE
HORSESHOE BEND | IDAHO CITY | KUNA | LOWMAN | MARSING | MCCALL | MELBA | MERIDIAN | MIDVALE
MOUNTAIN HOME | MURPHY | NAMPA | NEW MEADOWS | NEW PLYMOUTH | NOTUS | PARMA
PAYETTE | SILVER CITY | WEISER | WILDER | YELLOW PINE

TREASURE VALLEY SEASONAL ACTIVITIES GUIDE | 2023-2024 WINTER EDITION

Cover photo - Payette River near Garden Valley

CREATIVE & DESIGN **Betty Guerrero**

PHOTOS **Kevin Hughes
Karen Hughes
Stock Photos**

PUBLISHED **December 1, 2023**

HUGHES
REAL ESTATE GROUP
of **Silvercreek**
REALTY GROUP

827 S BRIDGEWAY PLACE, EAGLE, ID 83616
208.571.7145 | HughesGroup@BuyIdahoRealEstate.com

A special thanks to the REALTORS® of Hughes Real Estate Group of Silvercreek Realty Group

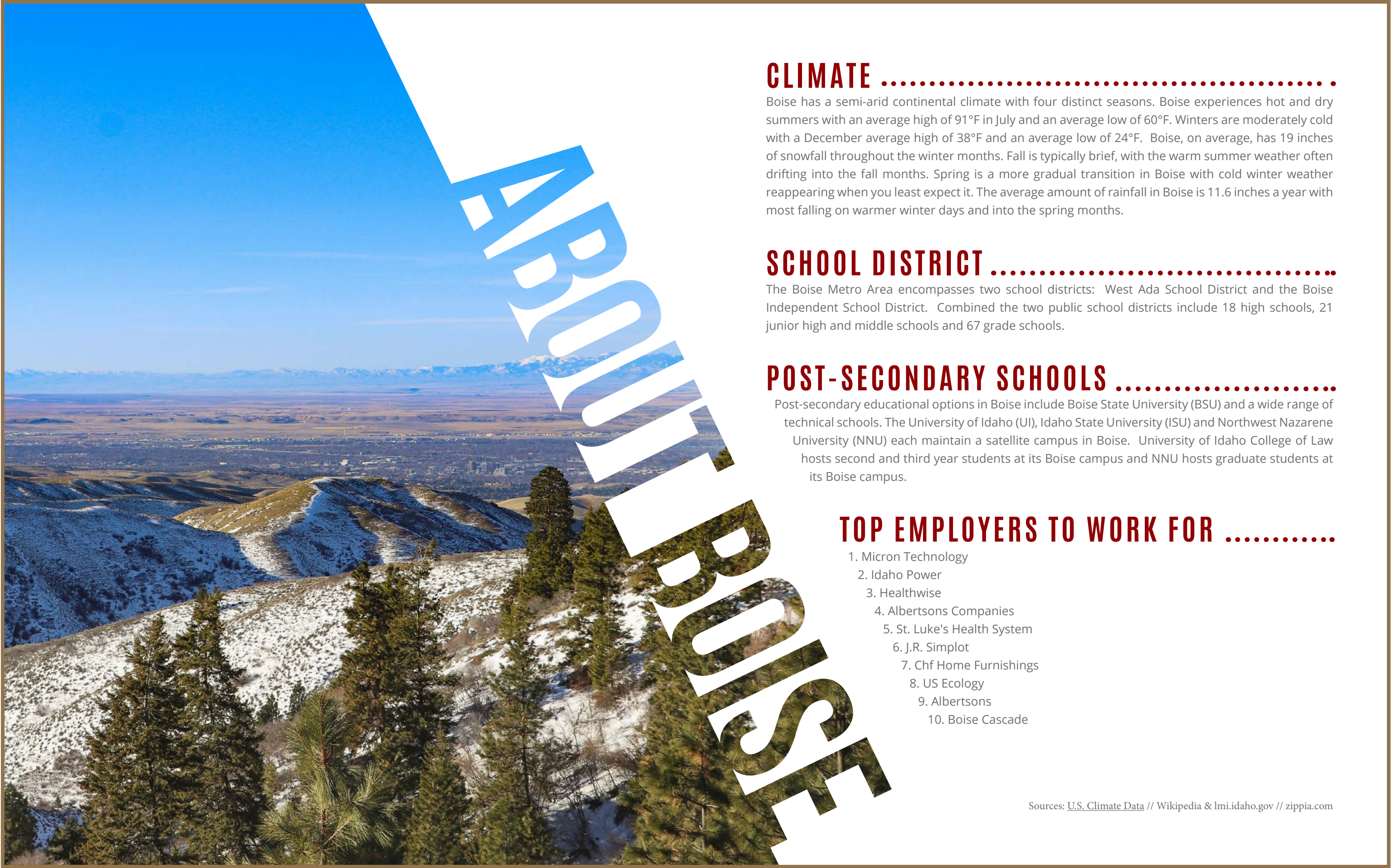




WINTER 2023-2024 FEATURES

- 18** **HOLIDAY LIGHT DISPLAYS**
Locations throughout the valley
- 20** **FIRST THURSDAYS**
Downtown Boise
- 21** **FESTIVAL OF TREES**
St. Alphonsus, Boise
- 22** **WINTER GARDEN AGLOW**
November 23 - December 31
- 23** **THE NUTCRACKER**
December 15 - 24
- 24** **VINTAGE MARKET DAYS**
December 1 & 2
- 25** **OLD FASHIONED SLEIGH RIDES**
Garden Valley, Idaho
- 26** **THE GREAT POLAR BEAR CHALLENGE**
January 6
- 27** **REMODELING & DESIGN SHOW**
January 13 & 14
- 28** **MCCALL WINTER CARNIVAL**
February 23 - 25
- 30** **SPRING HOME SHOW**
February 3 - 5
- 31** **INDULGE BOISE**
Idaho's Culinary & Cultural Food Tours
- 32** **SNOWMOBILING IN IDAHO**
Idaho Snowmobiling Adventures
- 34** **SKI RESORTS**
Idaho Skiing & Snowboarding
- 35** **HOT SPRING DESTINATIONS**
Soak Up in Idaho's Top Pools
- 36** **TREASURE VALLEY GYMS**
Fitness Centers
- 38** **TREASURE VALLEY RESTAURANTS**
Local Eats
- 40** **COFFEE SHOPS**
Brewed Locally
- 42** **BREWERIES**
Local Beer
- 44** **WINERIES**
Local Wine

**Please note that event dates & locations are subject to change.
Hughes Real Estate Group & Silvercreek Realty Group are not
affiliated with nor sponsors of any of the events or businesses
listed in this Activity Guide.*



CLIMATE

Boise has a semi-arid continental climate with four distinct seasons. Boise experiences hot and dry summers with an average high of 91°F in July and an average low of 60°F. Winters are moderately cold with a December average high of 38°F and an average low of 24°F. Boise, on average, has 19 inches of snowfall throughout the winter months. Fall is typically brief, with the warm summer weather often drifting into the fall months. Spring is a more gradual transition in Boise with cold winter weather reappearing when you least expect it. The average amount of rainfall in Boise is 11.6 inches a year with most falling on warmer winter days and into the spring months.

SCHOOL DISTRICT

The Boise Metro Area encompasses two school districts: West Ada School District and the Boise Independent School District. Combined the two public school districts include 18 high schools, 21 junior high and middle schools and 67 grade schools.

POST-SECONDARY SCHOOLS

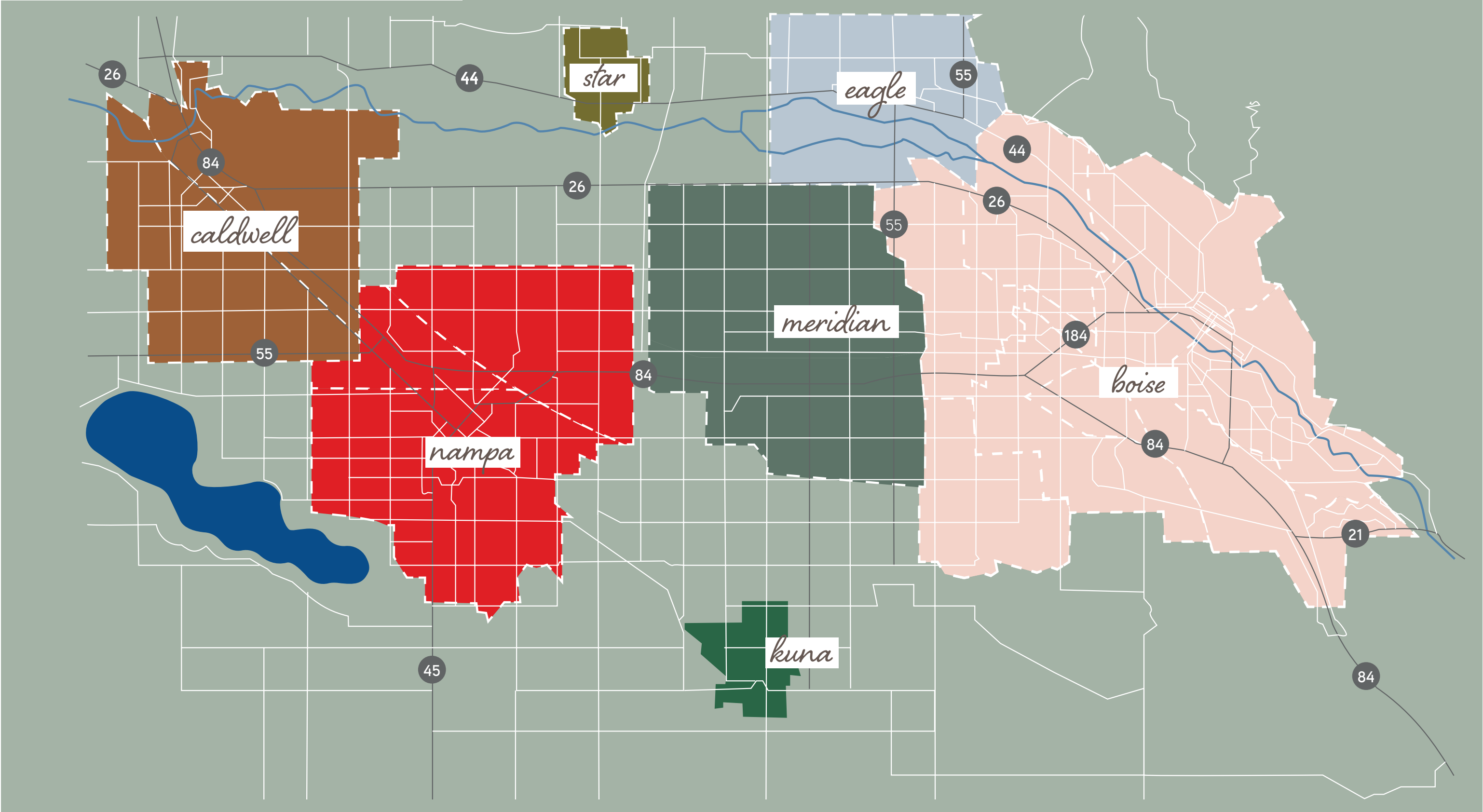
Post-secondary educational options in Boise include Boise State University (BSU) and a wide range of technical schools. The University of Idaho (UI), Idaho State University (ISU) and Northwest Nazarene University (NNU) each maintain a satellite campus in Boise. University of Idaho College of Law hosts second and third year students at its Boise campus and NNU hosts graduate students at its Boise campus.

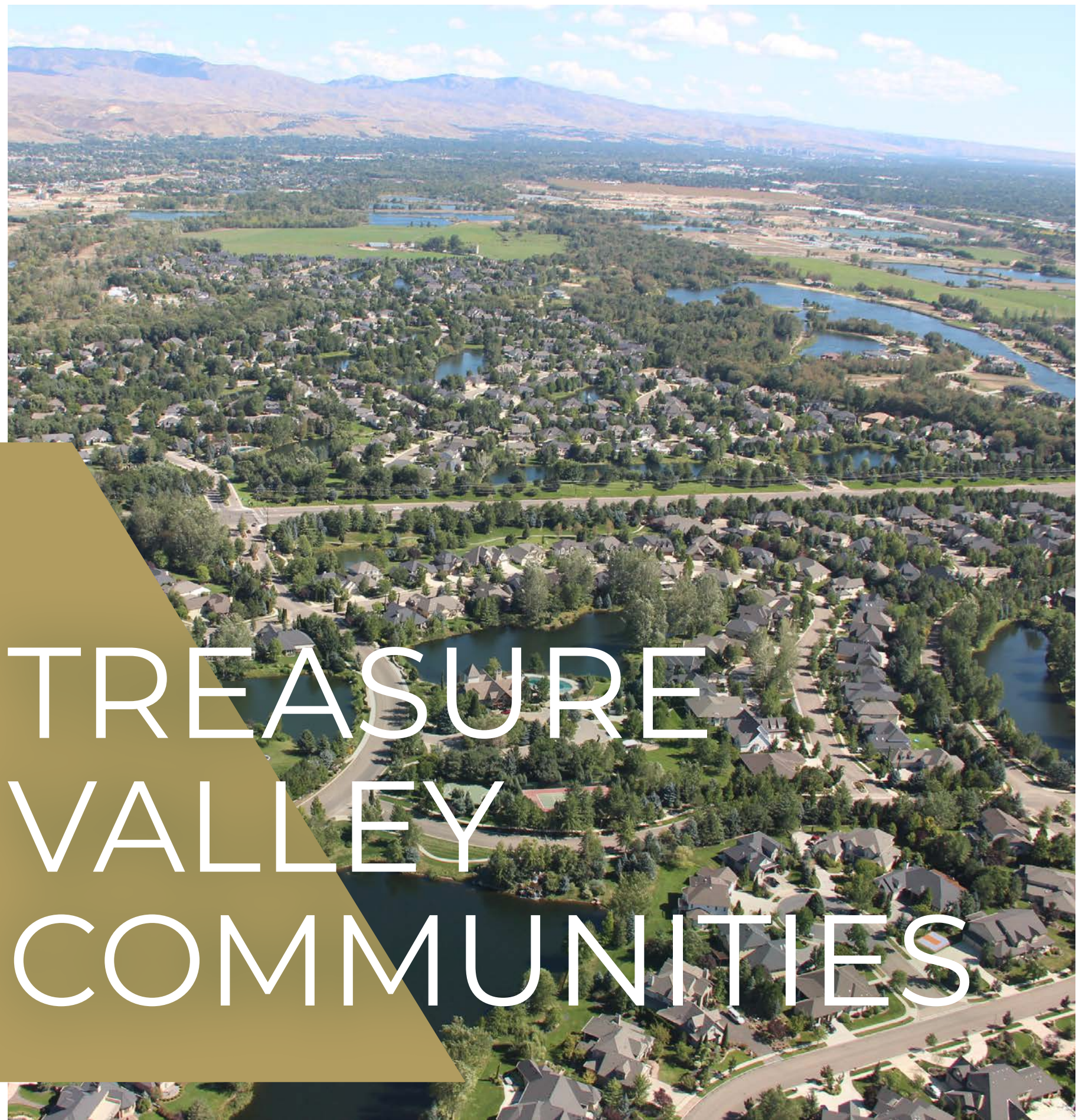
TOP EMPLOYERS TO WORK FOR

- 1. Micron Technology
- 2. Idaho Power
- 3. Healthwise
- 4. Albertsons Companies
- 5. St. Luke's Health System
- 6. J.R. Simplot
- 7. Chf Home Furnishings
- 8. US Ecology
- 9. Albertsons
- 10. Boise Cascade

Sources: [U.S. Climate Data](#) // [Wikipedia](#) & [lmi.idaho.gov](#) // [zippia.com](#)

TREASURE VALLEY MAP





TREASURE VALLEY COMMUNITIES

BOISE

The city of Boise is nestled in the Treasure Valley alongside the rolling foothills of the Boise Mountains. Known as the “City of Trees,” Boise is remarkably beautiful and boasts abundant area tree life complemented by the Boise River. Boise is known as a hot spot for recreationalists & outdoor adventurers alike and tops the list for ideal destinations accompanied by a slower paced lifestyle. The city of Boise attracts a diverse group of residents with a blend of outdoor activities, entertainment and business opportunities in technology, agriculture, healthcare, and industry. In addition, Boise also holds the title for the “Forbes 25 Best Places To Retire in 2019,” boldly ranking in at #3.

Boise, the capital city of Idaho, is a business development with a strong history of economic growth. Boise is noted as being “the best-kept secret in the Pacific Northwest” by USA Today and continues to raise the bar for economic achievements. Some of the area’s largest employers include Micron Inc., St. Luke’s Health Systems, Saint Alphonsus Health System, Wal-Mart Associates Inc, Albertsons, LLC, HP Inc, J.R. Simplot Company, Fred Meyer, Idaho Power Company, Wells Fargo Bank, N.A., Citi Corp, McDonald’s, Ataraxis, Inc, Blue Cross of Idaho, DirecTV, Jacksons Food Stores, YMCA, Scentsy, Inc, Xerox/WDS Global, Teleperformance, Hewlett Packard Enterprise Services, Sorrento Lactalis, Costco Wholesale Corp, CenturyLink, Amalgamated Sugar Company, Plexus Corp, Sykes, CTI SSI Food Service, and West Valley Medical Center.

Combine a lower crime rate with a strong business-friendly economy and the foundation for a truly remarkable community has been set. The heart of Boise is its tranquil atmosphere, stunning landscapes, and the culture that it creates. It has been said that what makes Boise the ideal destination is that it becomes more appealing the longer residents stick around. With so many opportunities for things to do and places to go, that statement encapsulates the core of Boise and what it means to live here.

EAGLE

From its beautifully diverse landscapes of plush tree-lined riverside beaches to the remote desert canyons that lie just beyond the foothills, the City of Eagle is distinctly beautiful. Find this community highly desirable for many reasons beyond its stunning landscapes. One of Eagle’s commonly unknown hidden treasures is that it shares a similar land size as its neighbor, the City of Meridian, though remains a smaller community with nearly one third the population.

Eagle offers the ideal mix of an established community with a fine selection of dining options, a museum, boutiques & shops, a bike park, local parks, a state park, as well as area trails and pathways. Complimented by its ideal blend of land use, the



City of Eagle boasts a remarkable selection of home styles and living accommodations. Discover the lifestyle that suits you best from riverside condos & flats to homes in the countryside, waterside or golf course living and a bit of everything in between. Escape to your very own in town retreat for a lifetime of memories.

Whether heading into town for a bite to eat, a day at the river, or an evening of entertainment, find countless indoor and outdoor activity opportunities within minutes. Living in the City of Eagle also proves beneficial in its relatively quick access to the bigger city amenities of the City of Boise, as well as straightforward access ideal for getting out of town towards the mountains. Whatever you enjoy, there is something in the City of Eagle for everyone. Check it out for yourself!

MERIDIAN

The City of Meridian is 12 miles west of the state capital. A gem at the heart of the Treasure Valley, the city is recognized as one of the 2023 best cities to live in America. As the valley's central location, Meridian offers optimal commute times making it the ideal travel base within a safe city. It offers access to commerce, a plethora of community parks, outdoor activities, endless entertainment options, music festivals, and other live events further enhance this community! Meridian features "The Village" where Frances' Versailles inspired architecture meets the Bellagio inspired fountains and winter ice rink.

The city of Meridian proves again and again to boast the ideal blend of amenities. Meridian has outstanding sporting and recreational amenities from the Meridian Speedway to the water park,

abundant Golf Courses, boutique shops, restaurants, cafes, and salons. The excellent schools, quality healthcare and lifestyle offer an abundance of access to commerce and culture, there truly is something for everyone in Meridian. It gets brisk in the winters here, though living in an area with four distinct seasons is more than enough to make up for it!

Stretching beyond the city and into the sprawling boundaries of Idaho opens another world of possibilities. There's a lifetime of places to go and things to do. Escape for the holidays to a mountain retreat, or a week rafting the Salmon River. Perhaps explore old ghost towns filled with treasures, delight in a road trip along the historic byways of Idaho or head to award-winning wineries. Discover yourself traveling across wildflower filled plains to the arid desert where the horses roam free.

Life is better in Idaho and now it's time to find all the reasons why you'll enjoy living here so much!

STAR



The City of Star is a flourishing community of growth combined with the delicate balance of nature. This delightful city boasts a hometown feel of knowing your neighbors combined with an atmosphere of small-town charm. Delight in weekends packed with fun or simply enjoy the peace and quiet of utter relaxation in the comfort of home. Save time cooking and head out to one of the local eateries for savory home-style cooking and tasty treats. Star also offers local area shopping options and things to do.

Enjoy area amenities with things to do including a selection of community classes, the library, sports leagues, a community center, skate park, and the popular Star's Hometown 4th of July Celebration event. Be sure to check out the Star RiverWalk, a popular year-round destination surrounded by nature and ideally located adjacent to the graceful Boise River. The pathway is lined with dense greenery and is popular for its area

birdlife including the Great Blue Heron, Bald Eagle, Osprey, Wood Ducks and more! The Boise River is also a popular destination for those warm summer days ideal for enjoying a day at the water. There's more! Find time to head over to one of the local community parks or the expansive sports park ideal for a picnic or a BBQ and a game!

The sky's the limit for weekends in and around the City of Star! Enjoy a day exploring area shops, going to the salon, and possibly head into the City of Boise for a movie and a night out. Living in the city of Star can mean enjoying a quaint community feel with larger city amenities minutes away. Star is situated in the Treasure Valley which also boasts nearby cities including Boise, Meridian, Eagle, Middleton, Kuna, Nampa, and Caldwell to name a few. Lavish in the luxuries of home in the countryside or close to downtown, whichever you prefer, when you choose to live in the inviting city of Star.

KUNA

The City of Kuna could easily be described as “big

city meets big country” and offers a quick escape from any urban apprehension. Delight in sprawling vistas, various parks, the historical museum & performing arts center, a selection of wineries, as well as a seasonal creek for waterside enjoyment. For additional outdoor activity opportunities, a bit further out, you may enjoy a day at Lake Lowell and the Deer Flat Wildlife Refuge or trekking over to the Snake River Birds of Prey Area that sits alongside the stunning Snake River. There's so much to do in and around the City of Kuna. The options are endless!

Kuna boasts a relatively smaller population of around 19,000 residents and growing, which makes for an excellent opportunity to live in a community of familiar names and faces, while still getting to know new residents! Kuna retains a tight-knit community feel and offers access to big city amenities like that of the much larger City of Boise, Meridian, and Nampa, with travel times ranging in at about an hour or so depending on the desired destination.

Spend your time enjoying the perks of living in a smaller city starting with a lower median home price



than that of those in the larger surrounding cities. You may also enjoy less in-town traffic and congestion, the freedom to enjoy a slower paced lifestyle if you so choose, as well as the many other perks associated with small-town charm. Enjoy the culture that the City of Kuna creates and the freedom to decide how best to spend your days and evenings living in the countryside.

NAMPA

The City of Nampa is a flourishing community of steady economic growth combined with a strong presence of community. The pinnacle of Nampa's notoriety remains the highly sought-after lower cost of living it provides. Nampa boasts a surplus of area amenities, entertainment options and indoor & outdoor activity opportunities. Nampa features 20+ community parks, abundant shopping opportunities including the Karcher Mall and the Treasure Valley Marketplace, a skating rink, museums, multiple movie theater options, a recreation center and more! Living in the City of Nampa brings with it an ideal combination of work and play. Find time to enjoy Lake Lowell and the Deer Flat National Wildlife Refuge, or you may want to consider heading over to the nearby Snake River and the Morley Nelson Snake River Birds of Prey Area.

The City of Nampa is a treasure trove of economic opportunity reaching out into health care and social assistance, manufacturing, retail trade, construction, educational services, and other services. The largest employers in Nampa include Amazon, Wal-Mart Associates Inc., St. Alphonsus Medical Center Nampa, Plexus Corp., Sorrento Lactalis, Northwest Nazarene University, Amalgamated Sugar Co., Great American Snacks, St. Luke's Regional Medical, Woodgrain Millwork Inc., Mission Aviation Fellowship, Heartland RV, Materne North



America, ON Semiconductor, Assisted Living of Idaho, Pacific Press Publishing, Fleetwood Homes Inc., Mirage Enterprises Inc., and HB Specialty Foods.

Enjoy a four seasons destination with the perks of Spring, Summer, and Fall fun activities like strolling the area pathways, boating, golfing, hunting, fishing, horseback riding, or possibly heading over to Lakeview Water Park for water fun or Midway Sports Park ideal for sports activities galore. What about year-round indoor and outdoor concerts, rodeos, and events? You may consider heading over to the Idaho Ford Center for a large selection of events. Have you always wanted to learn how to fly? The Nampa Municipal Airport is used for private, emergency, military, and industrial aviation. During the colder months, you may consider checking out all the Downtown Nampa shopping and dining options or discovering the expansive Nampa Library.

Additional year-round activities also include enjoying all that the Nampa Recreation Center and the Nampa Civic Center have to offer. Or maybe consider taking a semester of classes at the local university or college campus. Whatever you may enjoy Nampa has something for everyone. Discover all that Nampa has to offer you!

CALDWELL

Take a moment to be introduced to a wealth of the beautiful landscapes within the City of Caldwell. From the rolling green hills lined delicately with vineyards, groves, and orchards, to the valley's floor that is graciously complimented by the winding waters of the magnificent Boise River. Downtown Caldwell is ideally accented by the gentle waters of Indian Creek, a popular destination for those touring area shops and eateries. Find time to enjoy a self-guided tour of this area for an enjoyable day out on the town. This beautifully diverse growing region is filled with warm, fun-filled sunny days, evenings



accented with low lying fog, and a hint of snow in the colder months. It's easy to feel spoiled when surrounded by Idaho's fascinating natural settings and breathtaking destinations. Escape to the countryside for stunning scenic landscapes and views across the valley to the peaks of the Owyhee Mountains.

The beautiful City of Caldwell is complimented well with generous indoor and outdoor activity opportunities; from a day touring the wineries, to an evening at the golf course, there is something for everyone. The Canyon County Fairgrounds is a popular location for year-round events like rodeos and the fair. Discover destinations like the local college well known for its planetarium, art gallery, and the 850-seat proscenium house. Searching for adventure close to home? Explore the skies above Caldwell with a day starting at the Caldwell Airport, and then heading off to enjoy an exciting day skydiving.

Caldwell is packed with things to do! Find outdoor activity opportunities including fishing, hunting, water activities, various local parks, area OHV trails, and a shooting range. Consider checking out indoor activities that include a choice of movie theaters, an arcade, or exploring the various museums. Take a moment to feel like you've stepped back in time when you discover the local drive-in theatre or find yourself enjoying a historic tour of the remarkable downtown buildings and train depot. For those who enjoy the simple pleasures of an afternoon on the water surrounded by lush landscapes, you may want to consider heading over to the beautiful Lake Lowell. This highly desirable destination is ideal for enjoying area birdlife complimented by the rich warm colors of an evening sunset.

[Written by Karen Hughes]



HOLIDAY LIGHT *Displays*

Boise State Holiday Tree

1910 W University Dr, Boise

Canyon County Festival of Trees

Ford Idaho Center, 16114 N Idaho Center Blvd, Nampa

Christmas In Color Expo Idaho

5610 N Glenwood St, Boise

Downtown Boise Christmas Tree

The Grove Plaza, 827 W Main St, Boise

Heritage Park Christmas Tree

Heritage Park, 185 E State St, Eagle

Emmett Christmas Tree

Main St in Downtown Emmett

Indian Creek Plaza Light Display

120 S Kimball Ave, Caldwell

Kuna Christmas Tree

Old 4th St Gym, 571 W 4th St, Kuna

Meridian Winter Lights & Christmas Tree

804 N Main St, Meridian

Nampa Christmas Tree

12th Ave at Front St, Nampa

Scentsy Commons Christmas Lights

2701 E Pine Ave, Meridian

Shindig Farms Lost in Christmas

ID-45, Scism Rd, Nampa

Village at Meridian

3597 E Monarch Sky Ln



1ST THURSDAY
art, music, in-store promotions,
wine tastings & more

DOWNTOWN BOISE • EVERY MONTH 5PM - 9PM
IN-STORE ENTERTAINMENT • FINE & CASUAL DINING • WINE & BEER TASTINGS
LOCAL ART • LIVE MUSIC • SPECIAL EVENTS
DOWNTOWNBOISE.ORG



St. Alphonsus
Festival of Trees

November 22-26
Boise Centre
850 W Front St, Boise

www.saintalphonsus.org/foundation/events/festival-of-trees/



WINTER GARDEN AGLOW

Nov 23 – Dec 31
Wednesday to Sunday
6:00pm - 9:00pm
Idaho Botanical Garden
IDAHOBOTANICALGARDEN.ORG



BALLET IDAHO PRESENTS

THE NUTCRACKER

Morrison Center for the Performing Arts
December 15-24

BalletIdaho.org



Vintage Market Days

December 1-2
Fri 10-8 * Sat 10-5

Ford Idaho Center
16200 N Idaho Center Blvd. Nampa



Idaho Sleigh Rides

GARDEN VALLEY, ID
opening date:
December 15th
(dependent on good snow conditions)

ENJOY A RIDE THOUGH GARDEN VALLEY'S WINTER WILDERNESS IN AN OLD FASHIONED HORSE DRAWN SLEIGH. INCLUDES A COMPLIMENTARY HOT DRINK & A CHANCE TO SEE & FEED WILD ELK UP CLOSE!

FOR PRICING, RESERVATIONS, & ADDITIONAL INFORMATION, VISIT:
IdahoSleighRides.com

THE GREAT POLAR BEAR CHALLENGE

JANUARY 6
74 ARROWROCK RD • BOISE

11 AM • REGISTRATION BEGINNING AT 10 AM

An annual event benefiting Make-A-Wish Idaho held at Lucky Peak Reservoir and Spring Shores Marina. Hundreds of people come out to brave the chilly weather year after year to raise funds for children in Idaho with critical illnesses.



IDAHO REMODELING & DESIGN SHOW



JANUARY 13th & 14th
SATURDAY 10am-5pm | SUNDAY 11am-4pm
BOISE CENTRE

120+ EXHIBITS ◦ SHOP & COMPARE ◦ TALK TO THE PROS

FOR TICKETS & MORE INFORMATION VISIT [IBLEVNTS.COM/REMODELING-DESIGN-SHOW](https://iblevnts.com/remodeling-design-show)



McCall Winter Carnival

A celebration of all things winter! The McCall Winter Carnival was inspired by the first 1924 Payette Lake Winter Games. The official McCall Winter Carnival started in the 1960s, and over the years the Carnival has grown into a historic Idaho event bringing more than 60,000 people to McCall each year!

For more information, visit [visitmccall.org](https://www.visitmccall.org)

February 23-25



29TH ANNUAL CANYON COUNTY
**SPRING
HOME SHOW**

ford idaho center, nampa | feb 2-4
canyoncountyspringhideshow.com



Indulge BOISE



IDAHO'S CULINARY & CULTURAL FOOD TOURS

Expert tour guides for a culinary adventure through iconic neighborhoods & indulge at the best restaurants in your favorite Idaho cities. Year-round & family-friendly. VIP Private Tour experiences also available.

VISIT [INDULGEBOISE.COM](https://www.indulgeboise.com)
FOR MORE INFORMATION

SNOWMOBILING IN IDAHO

Idaho, with its vast expanses of picturesque wilderness and mountainous terrain, offers a winter wonderland for snowmobiling enthusiasts. The state's diverse landscape provides an exhilarating playground for those seeking adrenaline-pumping adventures amid breathtaking natural beauty. Snowmobiling in Idaho is not just a recreational activity; it's an immersive experience that allows riders to explore the remote and untouched areas that might be inaccessible during other seasons.

The state boasts an extensive network of groomed trails that crisscross its rugged backcountry, providing riders with access to a variety of terrains and landscapes. From the towering peaks of the Rocky Mountains to the serene valleys and dense forests, snowmobilers can discover a range of environments that make each ride a unique journey. Popular snowmobiling destinations include places like Island Park, McCall, and Stanley, where visitors can revel in deep powder, navigate challenging trails, and even access high-altitude viewpoints that offer panoramic views of the surrounding wilderness.

Idaho's snowmobiling season typically extends from December to April, allowing visitors ample time to experience the winter wonderland. Local clubs and organizations play a crucial role in maintaining the trails, ensuring safety, and promoting responsible riding practices. Beyond the adrenaline rush, snowmobilers can also enjoy the tranquility of the winter wilderness, catching glimpses of wildlife and immersing themselves in the peaceful ambiance of the backcountry.

For those seeking an unforgettable winter adventure, guided snowmobiling tours are available, offering both beginners and experts a chance to explore the remote corners of Idaho's snowy landscapes. With its combination of diverse terrain, well-maintained trails, and a passionate community of riders, Idaho stands as a premier destination for snowmobiling, inviting individuals and families alike to create lasting memories against a backdrop of snowy serenity.



IDAHO SNOWMOBILING ADVENTURES

TETON VALLEY ADVENTURES

Located in Driggs, Idaho, this rental provider offers guided snowmobile tours and rentals for exploring the Teton Valley region.

ISLAND PARK ADVENTURES

Based in Island Park, this outfitter offers snowmobile rentals for riders looking to explore the Island Park and West Yellowstone areas.

REDLINE RECREATION

With locations in McCall and Donnelly, Redline Recreation provides snowmobile rentals and guided tours in the beautiful Payette National Forest.

BIGHORN ADVENTURES

Located in Riggins, this outfitter offers snowmobile rentals and guided tours in the rugged backcountry of central Idaho.

HIGH MOUNTAIN ADVENTURES

Situated in Fairfield, High Mountain Adventures provides snowmobile rentals and tours in the scenic Sawtooth National Recreation Area.

BEAR BASIN ADVENTURES

Operating in McCall, this company offers snowmobile rentals for exploring the Payette National Forest and the surrounding areas.

WEST MOUNTAIN SPORTS

Based in Cascade, West Mountain Sports offers snowmobile rentals for riders looking to explore the West Mountain area.

PONDEROSA STATE PARK

Located in McCall, Ponderosa State Park offers snowmobile rentals for accessing the park's winter trails and picturesque landscapes.

BRUNDAGE MOUNTAIN ADVENTURES

Based in McCall, this outfitter offers snowmobile rentals for exploring the Brundage Mountain area and beyond.

HIGH COUNTRY ADVENTURES

Situated in Elk City, High Country Adventures provides snowmobile rentals and tours for exploring the rugged backcountry of northern Idaho.

Remember to check with each rental provider for availability, pricing, and any specific requirements or restrictions before making your reservation. Additionally, it's a good idea to inquire about safety equipment, trail recommendations, and local regulations to ensure a safe and enjoyable snowmobiling experience in Idaho's stunning winter landscapes.

SKI RESORTS IN IDAHO

BALD MOUNTAIN
230" SNOWFALL AVG
825' VERTICAL DROP
140 ACRES
2 LIFTS

BOGUS BASIN
250" SNOWFALL AVG
1,800' VERTICAL DROP
2,600 ACRES
10 LIFTS

BRUNDAGE
320" SNOWFALL AVG
1,921' VERTICAL DROP
1,920 ACRES
6 LIFTS

COTTONWOOD BUTTE
45" SNOWFALL AVG
845' VERTICAL DROP
260 ACRES
1 T-BAR, 1 ROPE

GRAND TARGHEE
500" SNOWFALL AVG
2,270' VERTICAL DROP
2,602 ACRES
5 LIFTS

KELLY CANYON
200" SNOWFALL AVG
1,000' VERTICAL DROP
688 ACRES
5 LIFTS

LITTLE SKI HILL
300" SNOWFALL AVG
405' VERTICAL DROP
50 ACRES
1 T-BAR

LOOKOUT PASS
400" SNOWFALL AVG
1,150' VERTICAL DROP
540 ACRES
4 LIFTS

LOST TRAIL
325" SNOWFALL AVG
1,800' VERTICAL DROP
1,800 ACRES
5 LIFTS, 3 ROPE TOW

MAGIC MOUNTAIN
230" SNOWFALL AVG
740' VERTICAL DROP
120 ACRES
3 LIFTS

PEBBLE CREEK
225" SNOWFALL AVG
2,200' VERTICAL DROP
1,100 ACRES
3 LIFTS

POMERELLE
500" SNOWFALL AVG
1,000' VERTICAL DROP
500 ACRES
3 LIFTS

SCHWEITZER
300" SNOWFALL AVG
2,400' VERTICAL DROP
2,900 ACRES
9 LIFTS

SILVER MOUNTAIN
300" SNOWFALL AVG
2,200' VERTICAL DROP
1,600 ACRES
7 LIFTS

SNOWHAVEN
60" SNOWFALL AVG
400' VERTICAL DROP
40 ACRES
1 T-BAR, 1 ROPE

SOLDIER MOUNTAIN
100" SNOWFALL AVG
1,400' VERTICAL DROP
1,150 ACRES
3 LIFTS

SUN VALLEY
220" SNOWFALL AVG
3,450' VERTICAL DROP
2,154 ACRES
18 LIFTS

TAMARACK
300" SNOWFALL AVG
2,800' VERTICAL DROP
1,000 ACRES
6 LIFTS

Source: Resorts, www.skidaho.us/resorts.

IDAHO HOT SPRING DESTINATIONS

THE SPRINGS
thespringsid.com
39 MILES | 54 MINUTES*

GIVENS HOT SPRINGS
givenshotsprings.com
47 MILES | 58 MINUTES*

KIRKHAM HOT SPRINGS
78.9 MILES | 1 HOUR 48 MINUTES*

MIRACLE HOT SPRINGS
miraclehotspring.com
108 MILES | 1 HOUR 44 MINUTES*

BANBURY HOT SPRINGS
miraclehotspring.com
110 MILES | 1 HOUR 47 MINUTES*

GOLD FORK HOT SPRINGS
goldforkhotsprings.com
96.8 MILES | 2 HOURS 8 MINUTES*

*TRAVEL TIMES AND DISTANCES ARE IN RELATION TO LEAVING BOISE, IDAHO, & MAY VARY.



SPECIALTY GYMS

ASANA CLIMBING GYM
Garden City | AsanaClimbingGym.com

ARBOR CROSSFIT
Boise | CrossfitArbor.com

BOISE CROSSFIT
Boise | BoiseCrossfit.com

CAMP RHINO CROSSFIT
Boise | CampRhino.com

MMA GYM
Boise | SBGIdaho.com

VERDANT CROSSFIT
Boise | VerdantFit.com

GENERAL FITNESS

ANYTIME FITNESS
Across The Valley | AnytimeFitness.com

AXIOM FITNESS
Boise & Meridian | AxiomFitness.com

CRUNCH
Across The Valley | Crunch.com

GROVE FITNESS CLUB & SPA
Boise | Grovefitness-Spa.com

IDAHO FITNESS FACTORY
Boise & Meridian | IdahoFitnessFactory.com

JACK CITY FITNESS
Boise | JackCityFitness.com

JOHNNY'S FIT CLUB
Boise | FitClubBoise.com

KVELL FITNESS & NUTRITION
Boise & Meridian | KvellFit.com

PLANET FITNESS
Boise & Garden City | PlanetFitness.com

THE MECCA GYM
Eagle | TheMeccaGym.com

RESTAURANTS



boise

| | |
|--|--|
| Alavita 807 W Idaho St | Fanci Freez 1402 W State St |
| ALYONKARUSSIANCuisine 2870 W State St | Fork 199 N 8th St |
| Barbacoa Grill 276 West Bobwhite Ct | Goodwood Bbq Co. 7849 W Spectrum St |
| Bardenay 610 W Grove St | Hawkins Pac-Out 2315 N Bogus Basin Rd |
| Basque Market 608 W Grove St | Lemon Tree 224 N 10th St |
| Big Jud's 1289 S Protest Rd | Lock Stock & Barrel 1100 W Jefferson St |
| BittercreekAlehouse 246 N 8th St | Mai Thai 750 W Idaho St |
| Brickyard 601 W Main St | WILD ROOT 276 N 8th St |
| Chandler'sSteakhouse 981 W Grove St | Willowcreek Grill 2273 S Vista Ave #150 |
| Cucina Di Paolo 1504 S VISTA AVE | YoiTomoSushi&Grill 405 S Capitol Blvd |

eagle

| | |
|--|--|
| Ahi Sushi Bar 1193EWindingCreekDr | Perks Of Life 1540 E Iron Eagle Ln |
| Bacquet's 1117EWindingCreekDr | Porterhouse Market 600 S Rivershore Ln |
| BodaciousPigBarbecue 34 E State St | Rembrandts 93 S Eagle Rd |
| CACiWood-FiredGrill 1592 E Riverside Dr | Rice Contemporary Asian Cuisine 228 E Plaza st |
| Coyne's 676 E Riverside Dr | Rib Shack Barbecue 395 W State St |
| CRAVE 165 E Colchester Dr | Schnitzel Garten 1225EWindingCreekDr#130 |
| daVinci's 190 E State St | The Stuffed Olive 404 S Eagle Rd |
| KB's BURRITOS 2794SEAGLERDSTE160 | Squeeze In 228 E Plaza Dr Suite F |
| Mongolian Of Eagle 362 S Eagle Rd | Wild West Home Of Mamma Italia 83 E State St #5928 |
| Oak Barrel Of Eagle 1065EWindingCreekDr | |

meridian

| | |
|--|--|
| Casa del Matador 3690 E Monarch Sky Ln | KONA GRILL 3573ELONGWINGLN#140 |
| DALTON ROYAL 3161 E Ustick RD #110 | LAND OCEAN 2902 N EAGLE RD |
| Epi'sBasqueRestaurant 1115 N Main St | Ling & Louie's 3210 E Louise Dr |
| Fat Guy's Fresh Deli 1626 S Wells Ave | Louie's Pizza & Italian 2500 E Fairview Ave |
| Gino's Italian 3015 W McMillan Rd #108 | Lucky Fins 1441 N Eagle Rd |
| Gramercy Park Pizza 1626 S Wells Ave #115 | Moe Joe's 12951 E Overland Rd |
| Grant'sNeighborhoodGrill 1835 W Cherry Ln | Ram 3272 E Pine Ave |
| Homestead Bar & Grill 1441 N Eagle Rd | Sa-Wad-Dee 1890 E Fairview Ave |
| Johnny Bronx Pizza 4970 N Linder Rd | Sockeye Brewing 12542 W Fairview Ave |
| KahootzSteak&AleHouse 1603 N Main St | Terri's Cafe 2483 E Fairview Ave |

nampa

| | |
|---|--|
| Aguillilla Restaurant 324 11th Ave N | JP Thailand Express 2025 12th Ave Rd |
| ALOHAISLANDGRILL 140 Caldwell Blvd | KrungThaiRestaurant 3008 Garrity Blvd |
| BandidosMexicanGrill 16462 N Franklin Blvd | LeBaron'sHonkerCafe 1210 2nd St S |
| Beefy's 1104 Garrity Blvd | Lamai Thai Food 453 Caldwell Blvd |
| Blazen Burgers 216 1st Ave S | LittleSaigonVietnamesE 1305 2nd St S #100 |
| Brick 29 Bistro 320 11th Ave S #300 | Messenger Pizza 1224 1st St S |
| DICKEY'S BBQ PIT 16565NMarketplaceBlvd | MingHaoRestaurant 3107 Garrity Blvd |
| Dos Caminos 908 3rd St S | Pacific Sushi 624 12th Ave S |
| Holy Cow Idaho! 1226 1st St S | The Tower Grill 105 Municipal Dr |
| Island Kine Grinds 140 Caldwell Blvd | Wheeler's Handout 215 Caldwell Blvd |

BREWED LOCALLY



alchemist coffee

10650 W OVERLAND RD BOISE, ID 83709
ALCHEMISTCOFFEE.COM

big city coffee & cafe

1416 W GROVE ST, BOISE, ID 83702
BIGCITYBOISE.COM

coffee studio

8205 W RIFLEMAN ST BOISE, ID 83704

dawson taylor

1035 S LUSK ST, BOISE, ID 83706
219 N 8TH ST, BOISE, IDAHO 83702
DISTRICTCOFFEEHOUSE.COM

flying m coffee

500 WEST IDAHO ST #100, BOISE, ID 83702
1314 2ND ST SOUTH, NAMPA, ID 83651
724 ARTHUR ST, CALDWELL, ID 83605
FLYINGMCOFFEE.COM

form & function

511 W BROAD ST, BOISE, ID 83702
FORMANDFUNCTIONCOFFEE.COM

java coffee shop

223 N 6TH SUITE 110 BOISE, ID 83702 (DOWNTOWN)
1612 N 13TH ST BOISE, ID 83702 (HYDE PARK)
JAVAIDAHO.COM

mocha moose coffee

2596 N BOGUS BASIN RD, BOISE, ID 83702

push and pour

214 EAST 34TH ST, GARDEN CITY, ID 83714
PUSHANDPOUR.COM

slow by slow

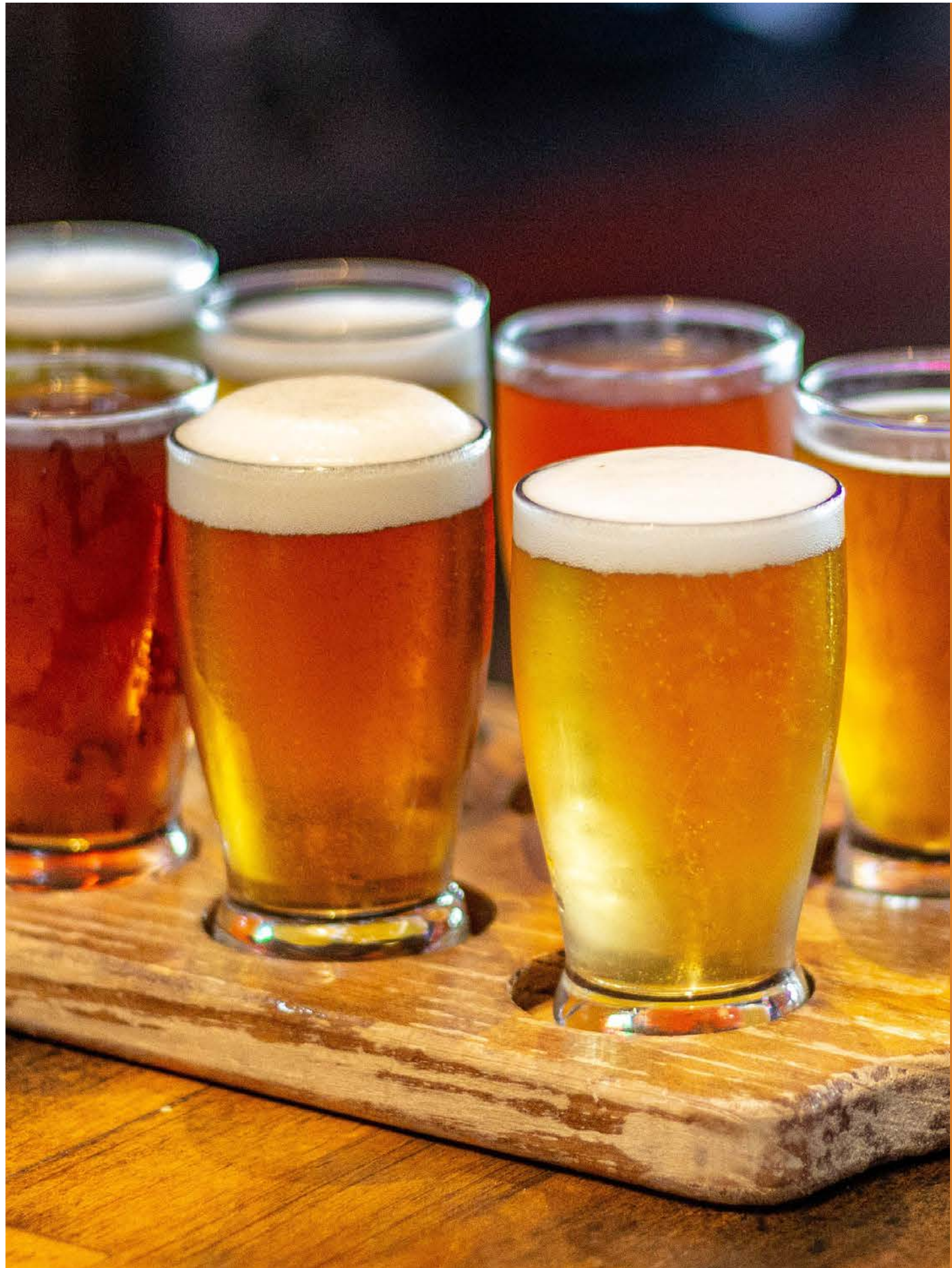
405 S 8TH ST, BOISE, ID 83702
SLOWBYSLOW.COM

the district coffee house

219 N 10TH ST BOISE, ID 83702
DISTRICTCOFFEEHOUSE.COM

CRAFT BREWERIES

YOU MUST BE 21 YEARS OLD TO PURCHASE OR CONSUME ALCOHOLIC BEVERAGES



BARBARIAN BREWING
5270 W Chinden Blvd, Garden City

BARBARIAN BREWING
1022 W Main St, Boise

10 BARREL BREWING CO
816 W Bannock St, Boise

BEAR ISLAND BREWING CO
1620 N Liberty St, Boise

BOISE BREWING
521 W Broad St., Boise

CLAIRVOYANT BREWING CO
9115 W Chinden Blvd, Garden City

CLOUD 9 BREWERY
1750 W State St., Boise

CRESCENT BREWERY
1521 Front St., Nampa

EDGE BREWING CO
525 N Steelhead Way, Boise

THE GROWLER GUYS
2020 E Overland Rd., Meridian

HIGHLANDS HOLLOW BREWING
2455 Harrison Hollow Blvd., Boise

LOOSE SCREW BEER CO
1511 W McMillan Rd, #100, Meridian

LOST GROVE BREWING
1026 S La Pointe St, Boise

MAD SWEDE BREWING CO
2772 S Cole Rd #140 ,Boise

MOTHER EARTH BREWING CO
1428 Madison Ave., Nampa

PAYETTE BREWING
733 Pioneer St., Boise

POWDERHAUS BREWING CO
9719 W Chinden Blvd., Garden City

RAM RESTAURANT & BREWERY
709 E Park Blvd, Boise

RAM RESTAURANT & BREWERY
3272 E Pine Ave, Meridian

SOCKEYE BREWING
12542 W FAIRVIEW AVE, BOISE

WESTERN COLLECTIVE
111 W 33rd St, Garden City

WHITE DOG BREWING
705 W Fulton St, Boise

3 HORSE RANCH VINEYARDS
5900 PEARL RD, EAGLE

BITNER VINEYARDS
16645 PLUM RD, CALDWELL

BODOVINO
404 S 8TH ST, BOISE

CINDER WINES
107 E 44TH ST, GARDEN CITY

COILED WINES
3408 W CHINDEN BLVD, GARDEN CITY

DUDE DEWALT CELLARS
5446 ID-16, Eagle

HELLS CANYON WINERY
18835 SYMMS RD, CALDWELL

HUSTON VINEYARDS
16473 CHICKEN DINNER RD, CALDWELL

INDIAN CREEK WINERY
1000 N McDERMOTT RD, KUNA

KOENIG VINEYARDS
21452 HOSKINS RD, CALDWELL

SAWTOOTH WINERY
13750 SURREY LN, NAMPA

SPLIT RAIL WINERY
4338 W CHINDEN BLVD, GARDEN CITY

STE. CHAPELLE WINERY
19348 LOWELL RD, CALDWELL

TELAYA WINE CO.
240 E 32ND ST, GARDEN CITY



YOU MUST BE 21 YEARS OLD TO PURCHASE OR CONSUME ALCOHOLIC BEVERAGES

LOCAL WINERIES

HOW FAR FROM BOISE IS...



WHAT'S THE WEATHER LIKE IN BOISE?

| | RECORD HIGH °F | AVG HIGH °F | AVG LOW °F | RECORD LOW °F | RAIN INCHES |
|-----|----------------|-------------|------------|---------------|-------------|
| JAN | 63° | 38° | 25° | -28° | 1.24" |
| FEB | 71° | 45° | 28° | -15° | 1.03" |
| MAR | 82° | 55° | 34° | 5° | 1.39" |
| APR | 92° | 62° | 39° | 11° | 1.23" |
| MAY | 100° | 72° | 47° | 22° | 1.39" |
| JUN | 109° | 81° | 54° | 30° | .69" |
| JUL | 111° | 91° | 60° | 35° | .33" |
| AUG | 110° | 90° | 60° | 32° | .24" |
| SEP | 102° | 79° | 51° | 23° | .58" |
| OCT | 94° | 65° | 41° | 11° | .75" |
| NOV | 78° | 48° | 32° | 10° | 1.35" |
| DEC | 70° | 37° | 24° | -25° | 1.55" |

Annual high temperature: 63.7°F
Annual low temperature: 41.3°F
Average temperature: 52.5°F
Average annual precipitation - rainfall: 11.66"
Average annual snowfall: 19"

Source: worldclimate.com/climate/us/idaho/boise

IDAHO IS BEAUTIFUL

