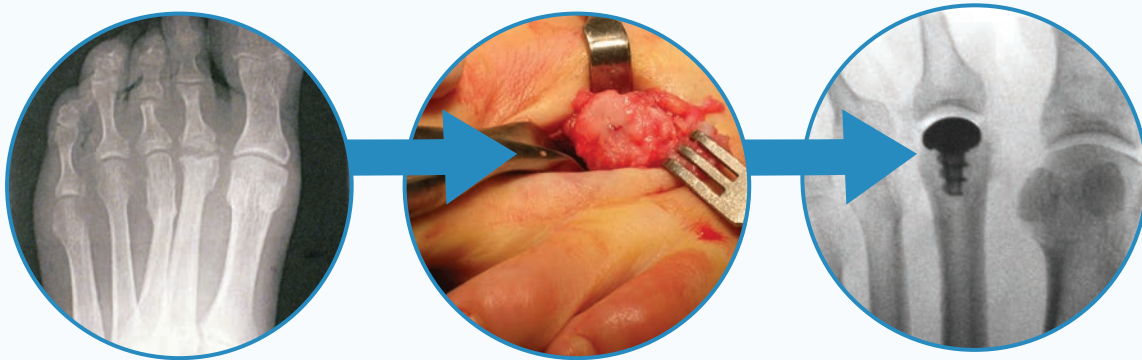




***Motion in Every Step***  
Metatarsal Implant Systems

# LESSER METATARSAL SURFACE RESTORATION

without compromise



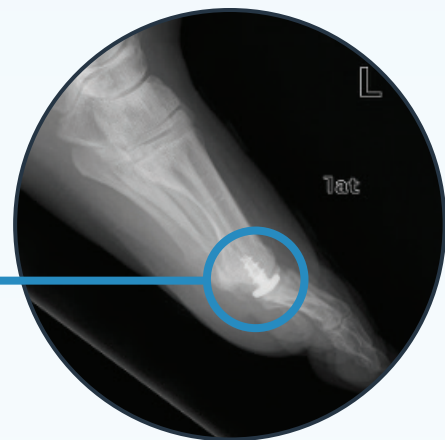
- ✓ Specifically designed for the lesser metatarsals
- ✓ Proven fixation provides a stable implant
- ✓ Minimal bone removal maintains future options
- ✓ Anatomic “Inlay” maintains the length of the 2nd metatarsal



Radiographic evaluation of the HemiCAP prosthesis in 56 patients demonstrated no significant evidence of loosening; it appeared to show **superior radiographic results** compared to those of other metallic implants using a stemmed design.

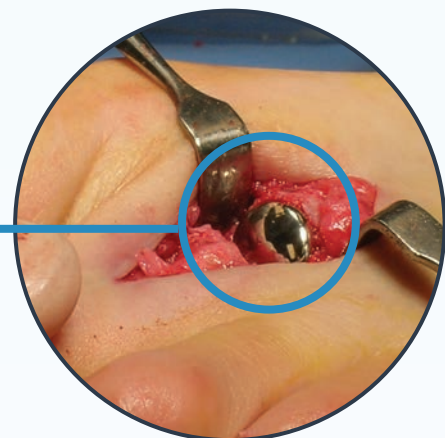
## Proven Threaded Fixation versus “Push and Pray” Implants

The 7 mm threaded taper post, morse taper interlock and inlay design provides optimal fixation in the metatarsal bone and reduces shear forces that may cause loosening.



## Restores a Smooth Articulation

Resurfacing the metatarsal head with a HemiCAP® provides a smooth articulating surface.



## Maintains the Length of the 2nd Metatarsal

The system is designed to only resurface the damaged 2nd metatarsal head without removing any extra bone.



## Ordering Information

### Instrumentation System

9000-3000	Instrument Kit, 12mm Toe HemiCAP
9000-1200	Instrument Kit, 7mm
7007-1200	2.0mm Guide Pin for Metatarsal Implants

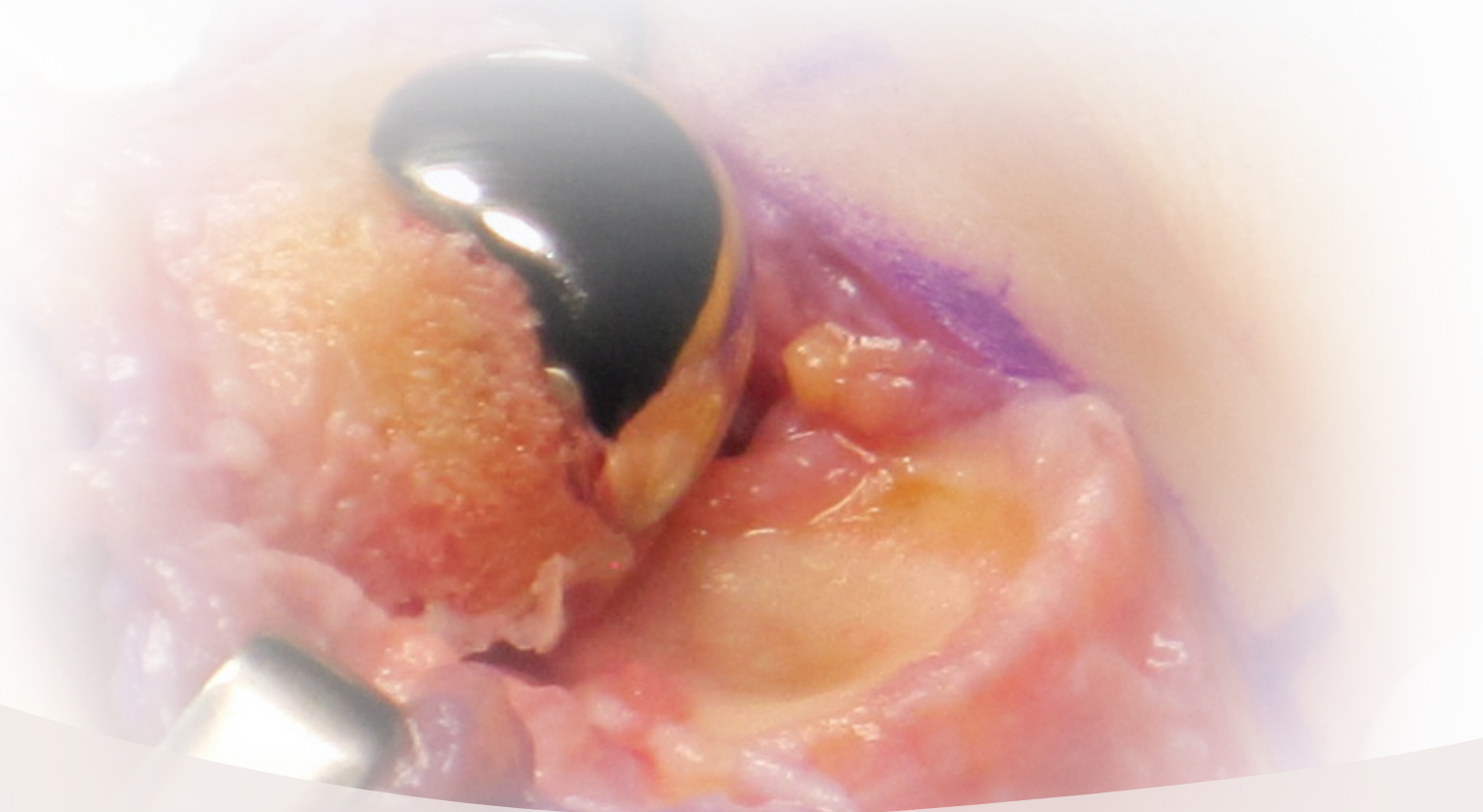
### Metatarsal Articular Components

9122-1015	1.0mm x 1.5mm Offset
9122-1020	1.0mm x 2.0mm Offset
9122-1520	1.5mm x 2.0mm Offset
9122-1525	1.5mm x 2.5mm Offset
9122-2025	2.0mm x 2.5mm Offset
9122-2030	2.0mm x 3.0mm Offset
9070-0013	Taper Post, 7.0mm x 13mm



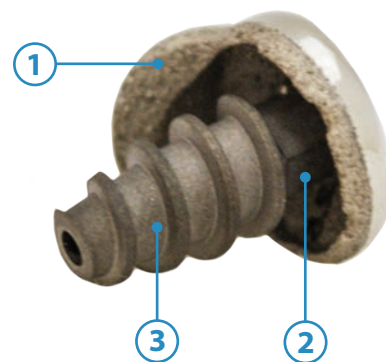
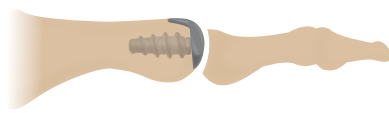
# PROVEN RESULTS

The HemiCAP<sup>DF</sup> has **rock solid fixation**, a **unique metatarsal based design** and **proven clinical history** with over 30,000 MTP implants.



“Radiographic evaluation of the HemiCAP prosthesis in 56 patients demonstrated no significant evidence of loosening; it appeared to show **superior radiographic results** compared to those of other metallic implants using a stemmed design.”

# ROCK SOLID FIXATION



Screw based fixation provides a **stable** implant

- (1) Ti Plasma spray undercoating with line to line bone to implant fit
- (2) Morse Taper interlocks the two components
- (3) Bead blasted screw surface provides superior fixation

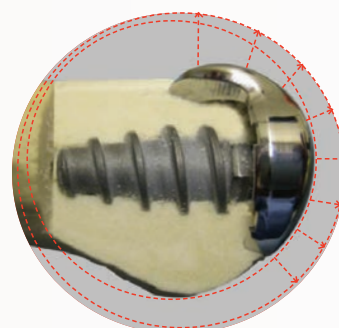
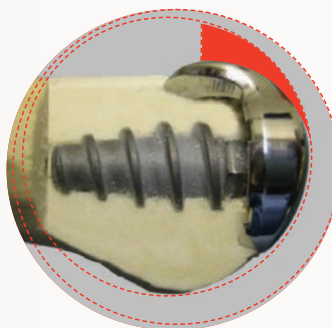
## UNIQUE DESIGN

**Dual implant curvatures** improve dorsal roll-off

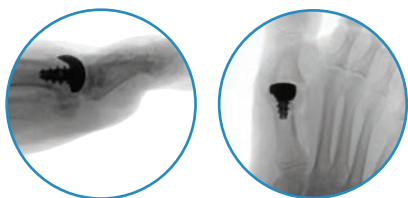
**Super smooth** articulating CoCr surface

**Conical shape** to optimize bone-screw interface

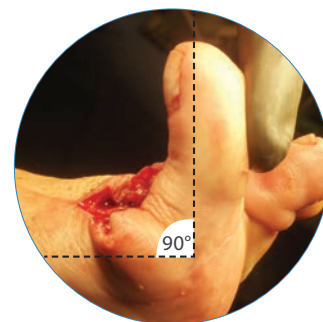
**Standardized thread pitch** for precise depth



## PROVEN RESULTS



- ✓ 8 years of MTP clinical history
- ✓ Over 20,000 MTP implants
- ✓ No reported implant dissociation or subsidence



## Ordering Information

### Instrumentation System

9000-3002	Instrument Kit, ToeMotion
7007-1200	2.0mm Guide Pin for Metatarsal Implants

### Metatarsal Articular Components

9M52-1535	1.5mm x 3.5mm Offset
9M52-1545	1.5mm x 4.5mm Offset
9M52-2535	2.5mm x 3.5mm Offset
9M52-2545	2.5mm x 4.5mm Offset
9095-0018	Taper Post, 9.5mm x 18mm (for Metatarsal only)

# ARTICULATION. FIXATION. PRESERVATION.

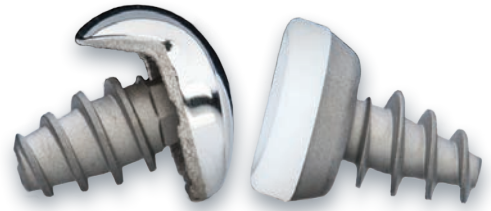
The Arthrosurface® ToeMotion® System restores mobility and maintains native biomechanics using a dual curved HemiCAP DF® and a new modular tray-style phalangeal implant with a threaded baseplate. Fourth generation fixation components provide stable constructs on both sides of the joint.



- ✓ Inlay arthroplasty provides stability and preserves bone
- ✓ Double rock-solid fixation with morse taper interlock
- ✓ Long-term clinical history with over 20,000 MTP implants
- ✓ Single tray system with multiple implant options

# ROCK SOLID FIXATION

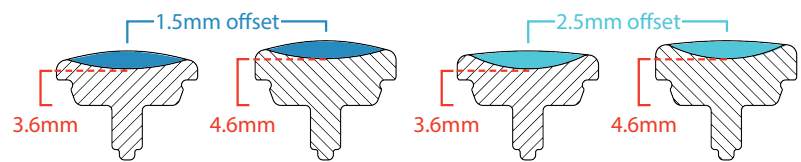
Designed to address the primary failure mode of MTP implants-loosening.



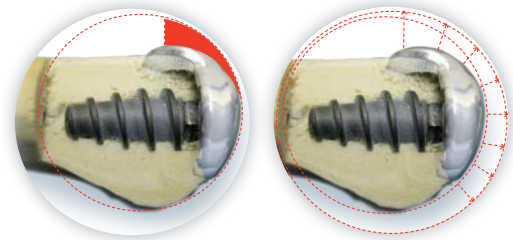
- ✓ Bead blasted MTP screw surface provides superior fixation
- ✓ Morse Taper interlocks the two components
- ✓ Screw based fixation provides a stable implant on both sides of the joint

# UNIQUE DESIGN

Engineered to reproduce the unique kinematics of the MTP joint.



- ✓ Poly inserts available with multiple offsets & thicknesses
- ✓ Standardized thread pitch for precise depth adjustment
- ✓ Dual MTP implant curvatures improves dorsal roll-off



## Ordering Information

### Instrumentation System

9000-3002	Instrument Kit, ToeMotion
7007-1200	2.0mm Guide Pin for Metatarsal Implants

### Metatarsal Articular Components

9M52-1535	1.5mm x 3.5mm Offset
9M52-1545	1.5mm x 4.5mm Offset
9M52-2535	2.5mm x 3.5mm Offset
9M52-2545	2.5mm x 4.5mm Offset
9095-0018	Taper Post, 9.5mm x 18mm (for Metatarsal only)

### Proximal Phalanx Articular Components

9P15-0100	Insert Delivery Tool, Phalangeal
9P15-PA01	Phalangeal Insert, 1.5 mm Offset - 01 (3.6 mm Thick)
9P15-PA02	Phalangeal Insert, 1.5 mm Offset - 02 (4.6 mm Thick)
9P15-PB01	Phalangeal Insert, 2.5 mm Offset - 01 (3.6 mm Thick)
9P15-PB02	Phalangeal Insert, 2.5 mm Offset - 02 (4.6 mm Thick)
9P15-S180	Fixation Component, Phalangeal Implant







Ruth received an Arthrosurface ToeMotion® Implant and is back to her active lifestyle and doing what she loves!

**#STAYACTIVE**