

Genus: Psorophora

Penelope Smelser, Environmental Health Supervisor

Norfolk Department of Public Health

757-683-2841

Penelope.Smelser@Norfolk.gov

Species

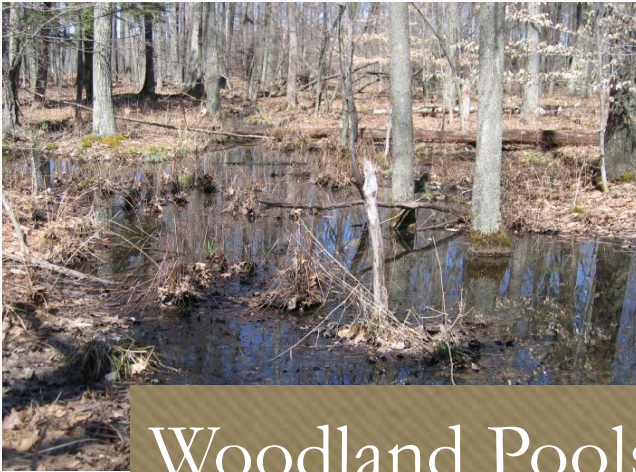
Psorophora columbiae

Psorophora ciliata

Psorophora howardii

Psorophora ferox

Habitat



Woodland Pools



Floodwater



Brackish Water

Behavior

Voracious
Biters

Mostly
Confined to
Wooded Areas

Long Flight
Ranges

Low Disease
Transmittal
Rates

Rapid
Development

Eggs can
withstand
desiccation

1. Palpus longer than antennae (Fig. 1); scutellum evenly rounded, with continuous row of posterior setae (Fig. 2)..... 2
- Palpus much shorter than antennae (Fig. 3); scutellum with 3 distinct lobes, long setae confined to the 3 lobes (Fig. 4)..... 3

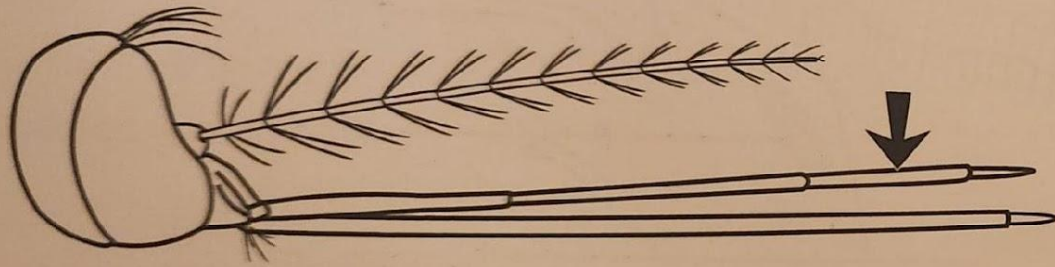


Fig. 1

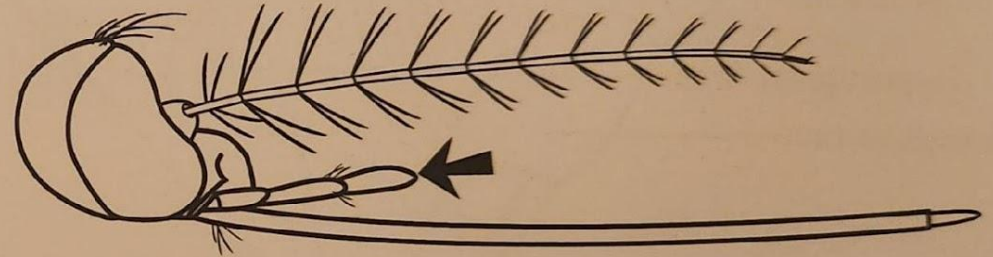
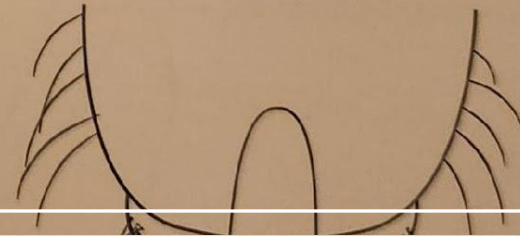
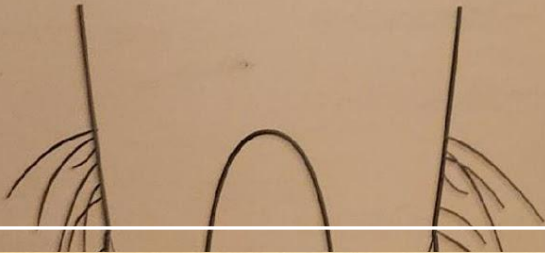


Fig. 3



- 3(1). Scutum and scutellum with setae and small scales, but integument clearly visible; mesopostnotum without setae or scales (Fig. 7). 4

Scutum and scutellum covered with round flat scales; mesopostnotum with small patch of setae (Fig. 8); small species found in pitcher plants *Wyeomyia smithii*
(See Note 2)

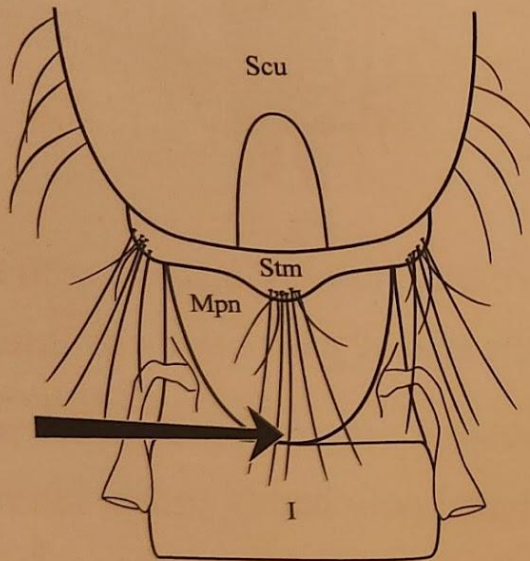


Fig. 7

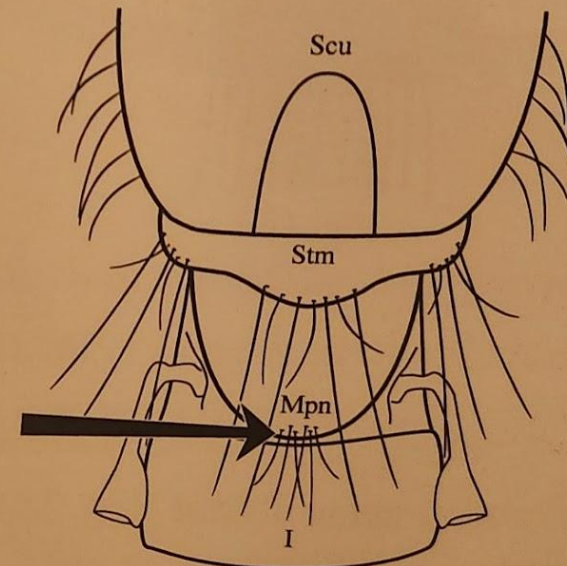


Fig. 8

4(3). Postspiracular setae present (Fig. 9). 5

Postspiracular setae absent (Fig. 10). 7



Fig. 9

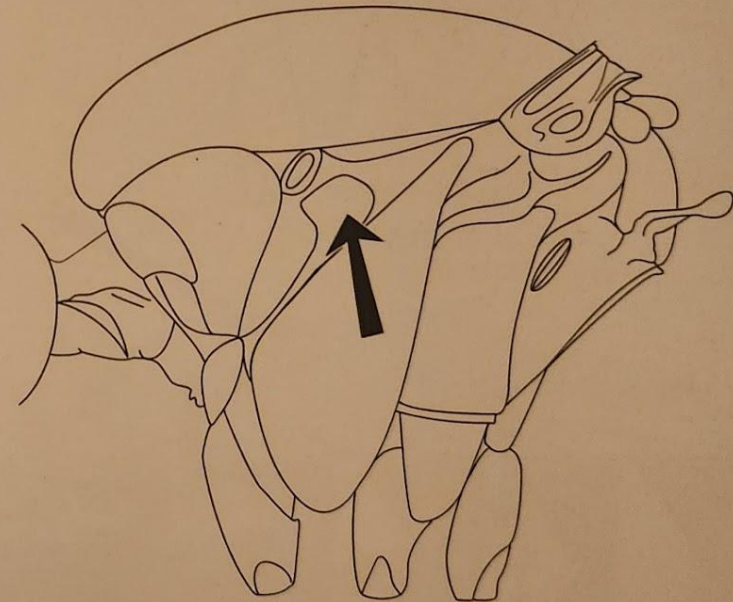


Fig. 10

5(4). Tip of abdomen blunt or rounded from dorsal view (Fig. 11); abdominal segment VII much wider than long (Fig. 11). (Currently in GA and SC). *Mansonia* (p. 69)

Tip of abdomen sharply pointed from dorsal view (Fig. 12); if appearing blunt, then abdominal segment VII will be narrower than long (Fig. 12). 6

6(5). Prespiracular setae present (Fig. 13); abdominal segments with apical pale bands or lateral patches (Fig. 14). *Psorophora* (p. 71)

Prespiracular setae absent (Fig. 15); abdominal segments with basal pale bands and/or lateral patches (Fig. 16). *Aedes* (p. 33)

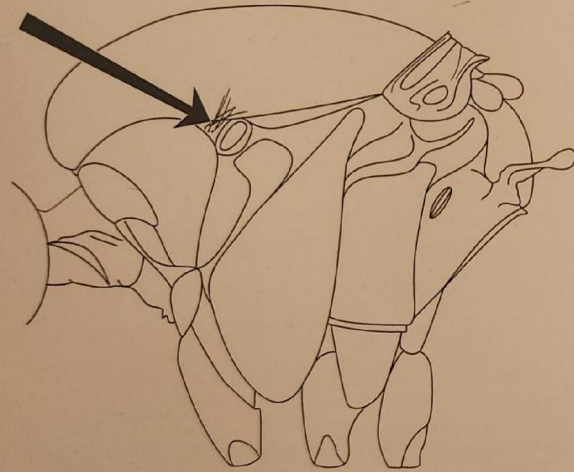


Fig. 13

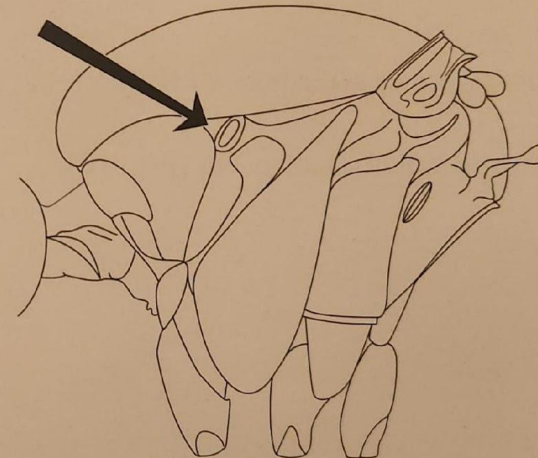


Fig. 15

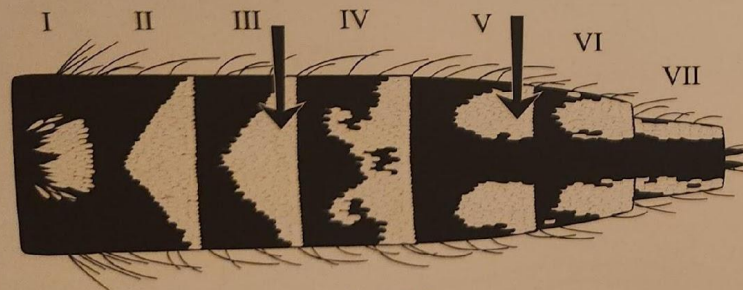


Fig. 14

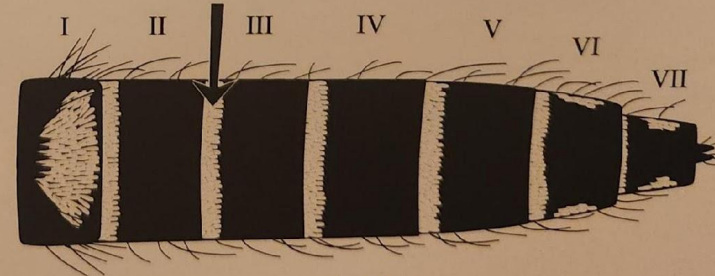


Fig. 16

Defining Characteristics

Pointed
Abdomen

Apical
Banding on
the Abdomen

Above
Average Size

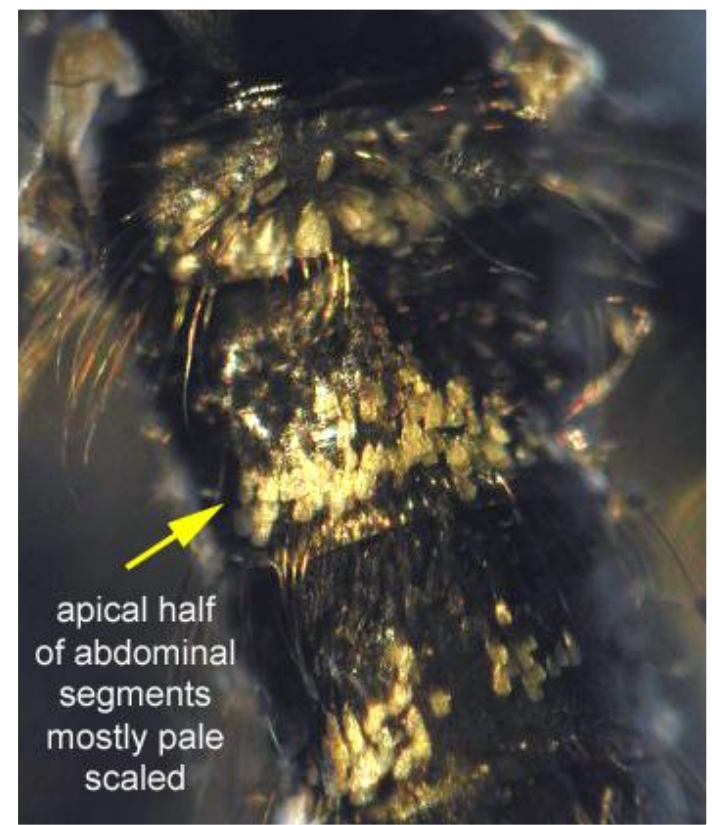
Psorophora columbiae

- White and Black Wing Scales
- Pale Band on Proboscis
- White Tips on Palps
- Banded Legs
- Dark Brown/Black
- Incomplete white apical bands on abdomen

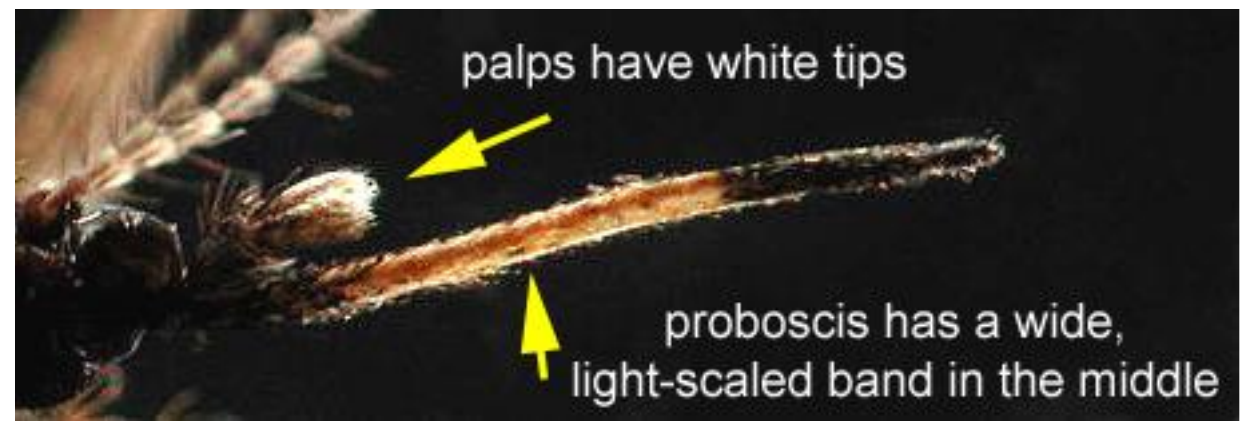




Dark and Light Wing Scales



apical half
of abdominal
segments
mostly pale
scaled



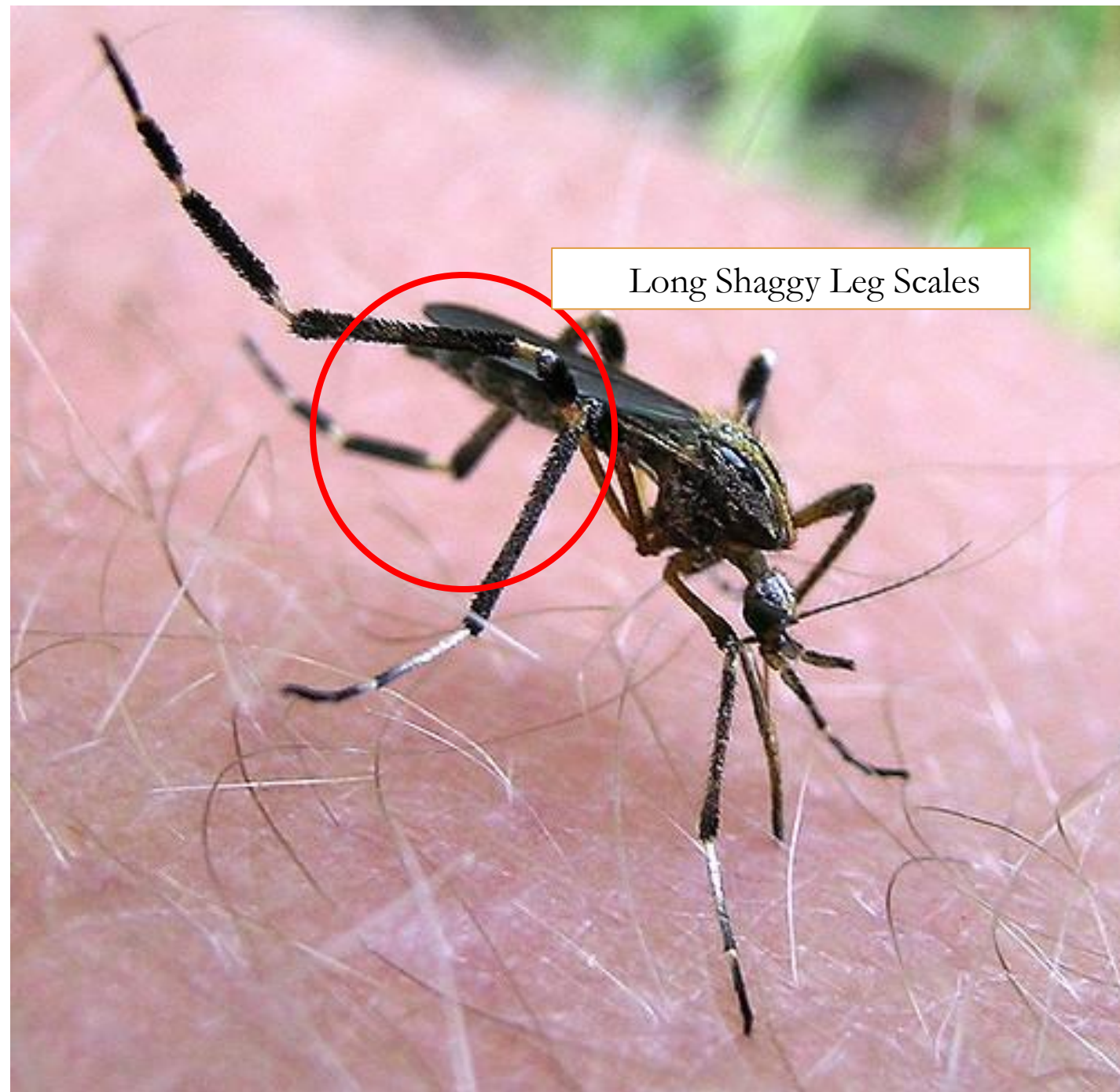
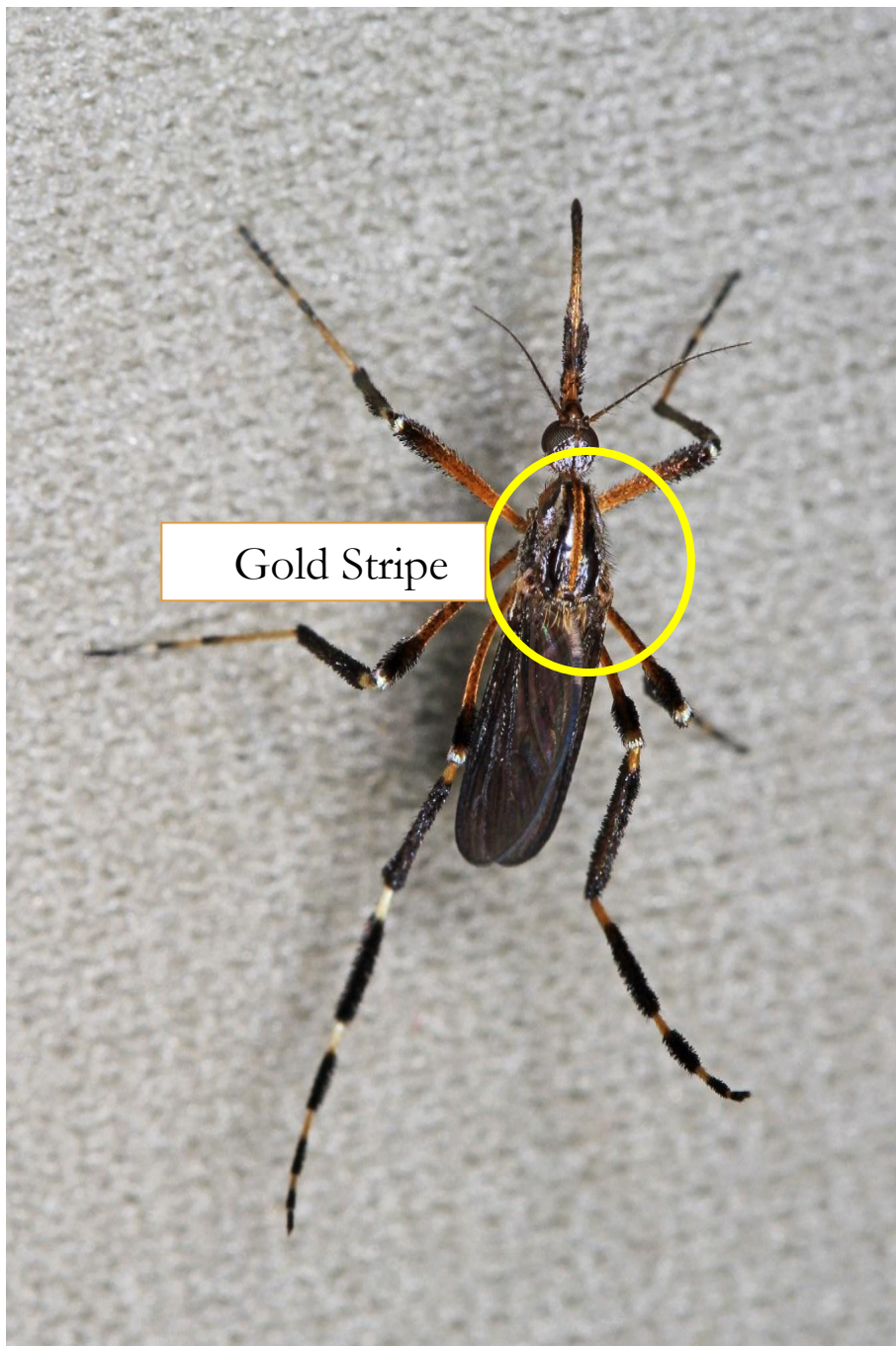
palps have white tips

proboscis has a wide,
light-scaled band in the middle

Psorophora ciliata



- Exceptionally Large
- Wing Scales Dark
- Gold Stripe on Top of Thorax
- Gold Scales on the Proboscis
- Shaggy/Feathery Dark Leg Scales

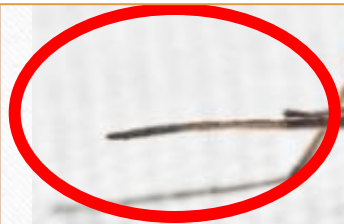


Psorophora howardii

- Exceptionally Large
- NO Gold Stripe on Top of Thorax
- Proboscis uniformly dark
- Dark Leg Scales tufted at the femur only



No Gold Band



Leg Scales Less Shaggy



No Gold Stripe



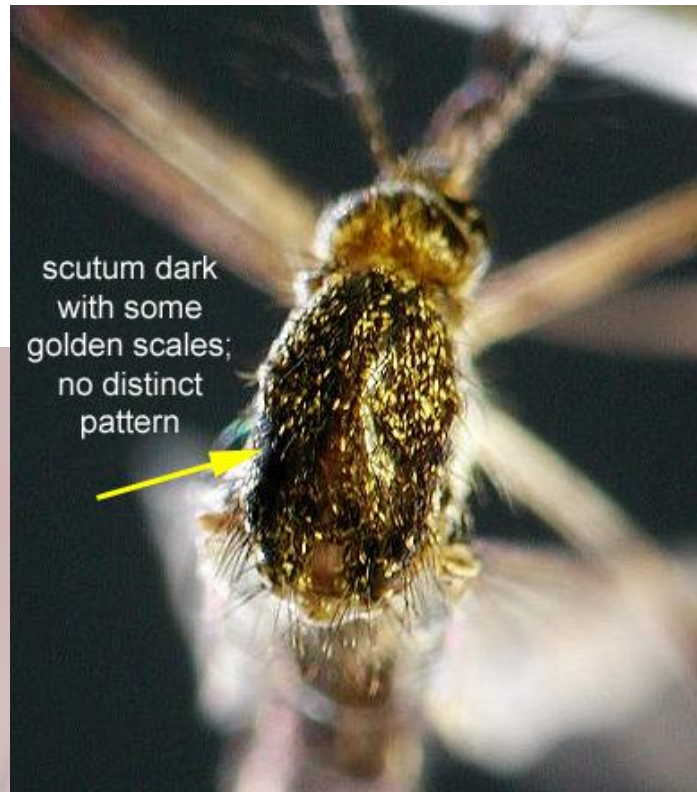
Psorophora ferox



- Pointed Abdomen with Gold Apical Banding
- Scutum speckled with brown and gold scales
- Purple body sheen
- “Rainbow” Eyes
- White “socks”



White "Socks"



scutum dark
with some
golden scales;
no distinct
pattern

Psorophora horrida

