

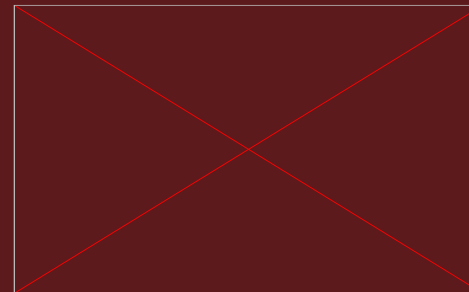
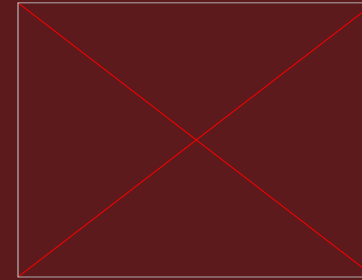
MINOR GENERA OF MOSQUITOES IN VIRGINIA

Presented by:
Gina Serge
Henrico County Vector Surveillance and Control
ser089@henrico.gov



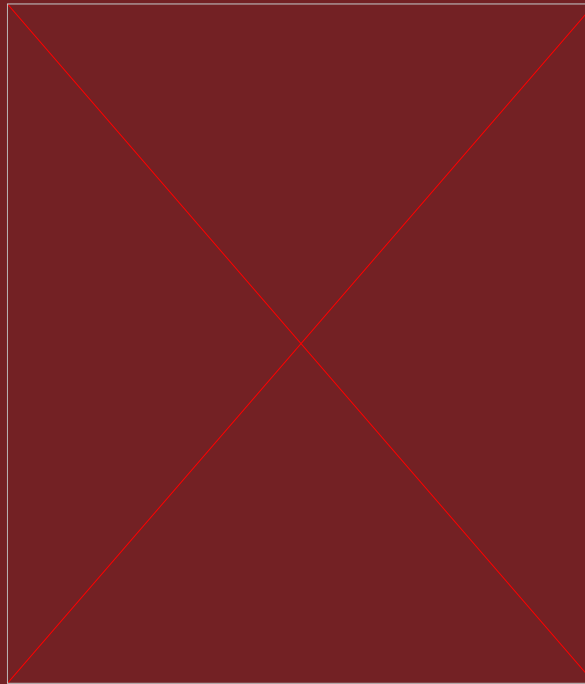
“MINOR” COINED TERM
MEANING: VERY FEW SPECIES
IN EACH GENERA ARE FOUND
IN VIRGINIA

- *Coquillettidia perturbans*
- *Culiseta melanura*
- *Orthopodomyia signifera*
- *Uranotaenia sapphirina*
- *Toxorhynchites rutilus*



TOXORHYNCHITES RUTILUS

Palps longer than antennae
Proboscis strongly bent downward
VERY large



INTERESTING FACTS
ABOUT *TOXORHYNCHITES*
RUTILUS

- Do not take a blood meal.
- Their larvae eat other mosquito larvae.



URANOTAENIA SAPPHIRINA

- Very small – among the smallest in North America
- Proboscis has a 'swollen tip'
- Scutum with median longitudinal iridescent blue scales.



INTERESTING FACTS ABOUT *URANOTAENIA* *SAPPHIRINA*

- She's blue!!
- Only known mosquito species to specialize on invertebrate host animals. Specifically, annelids such as earthworms and leeches.

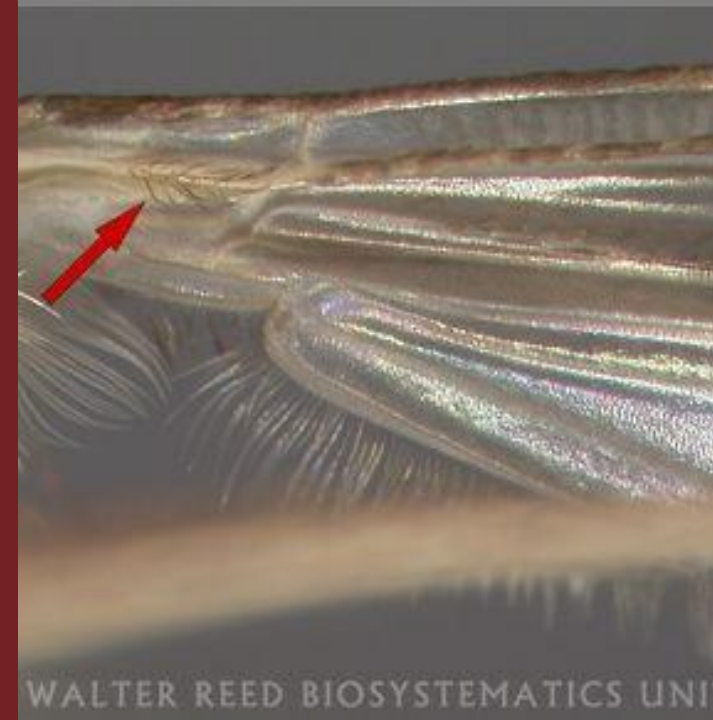
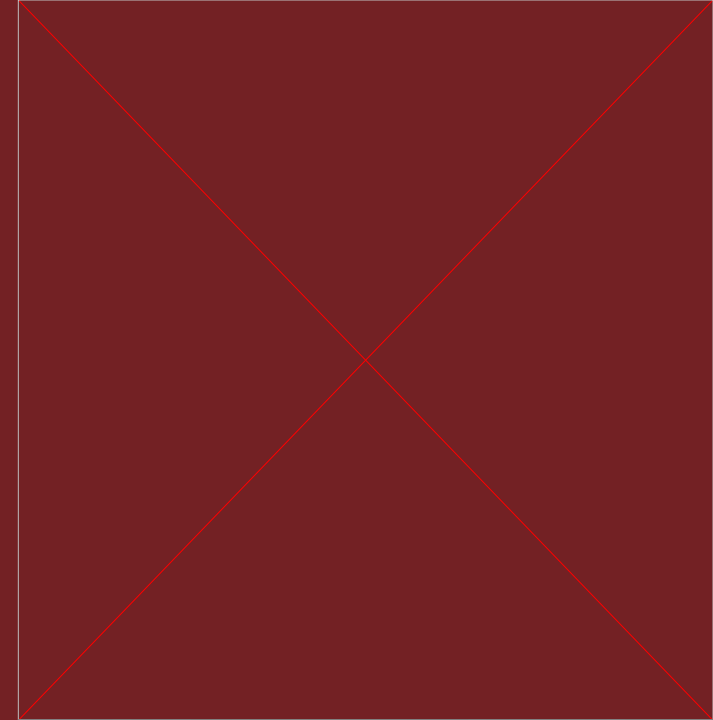




CULISETA MELANURA



- Medium sized mosquito with blunt/round abdomen – easily resembling a *Culex*
- Unusually long, curved proboscis (but not as long and curved as Tox)
- “Armpit hairs” (setae) on the base of the subcostal vein on the underside of the wing



INTERESTING FACTS ABOUT *CULISETA* *MELANURA*



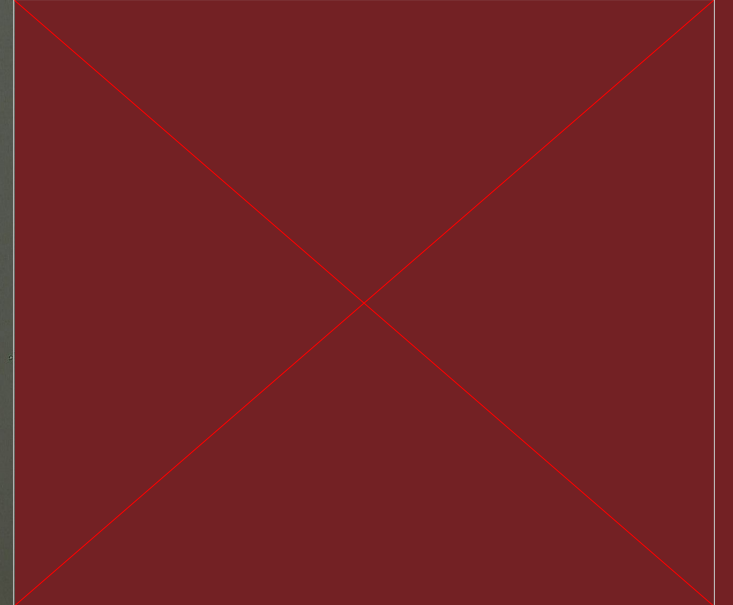
- Medical and Veterinary Importance
 - i. Competent vector for EEE
- Nicknamed the 'black tailed mosquito'
- Egg lays in swampy areas (flood plains and woodland pools)

COQUILLETIDIA PERTURBANS

- “Salt and Pepper” appearance.
- Proboscis with median band of pale scales.
- Hind tibia with broad preapical pale band.
- “Cattail Mosquito” – Larvae attach to the roots/stems of emerging aquatic plants for respiration.



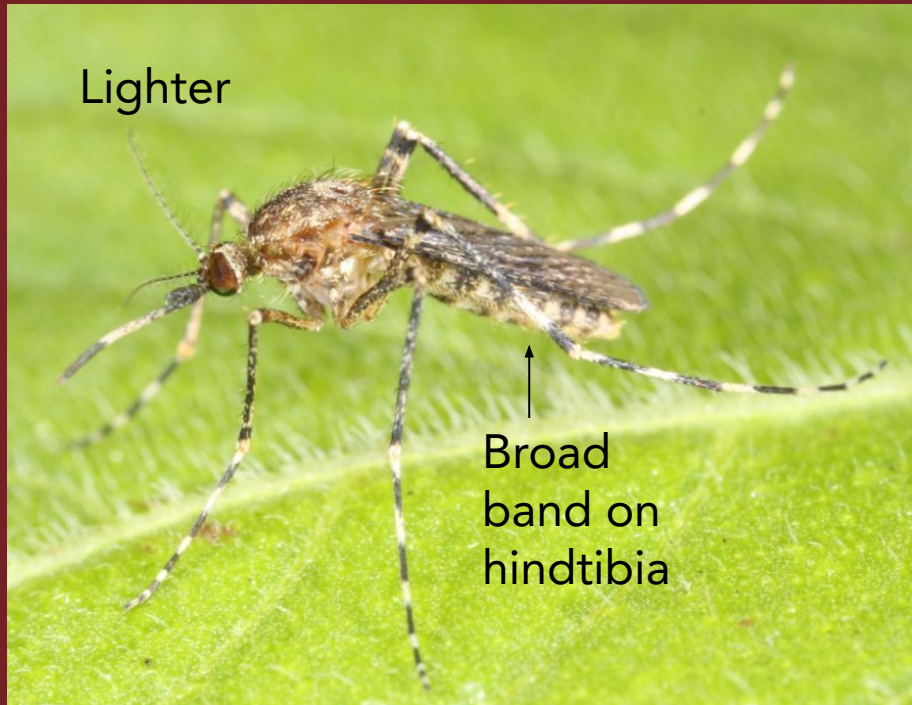
WALTER REED BIOSYSTEMATICS UNIT



COQUILLETIDA
PERTURBANS

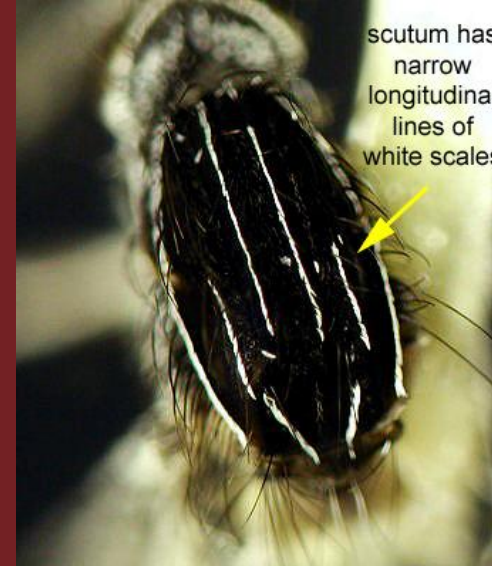
VS

PSOROPHORA COLUMBIA

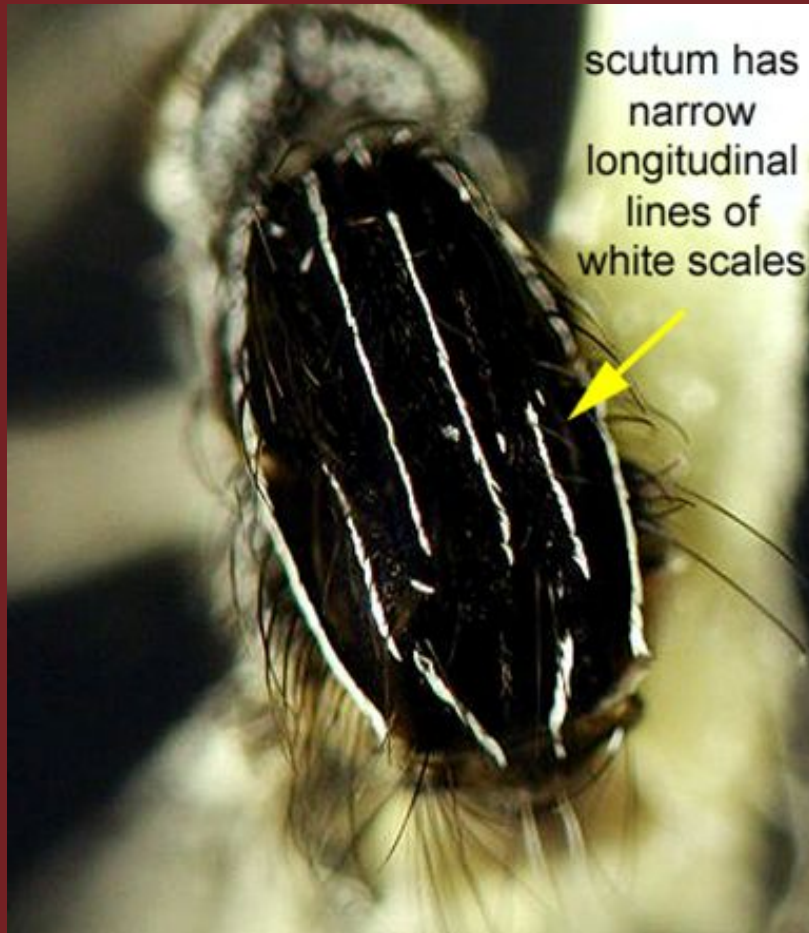


ORTHOPODOMYIA SIGNIFERA

- Ornate Tree Hole Mosquito
- Mostly black body with striking bright white markings.
- Cross banding on the legs



*ORTHOPODOMYIA
SIGNIFERA*



VS

AEDES AEGYPTI





THANK YOU



Gina Serge

ser089@henrico.gov

Henrico County Public Works

Vector Surveillance and Control