

Encounters on the Job

Work Safety Course

Presented By: Tim DuBois
City of Hampton Environmental Services

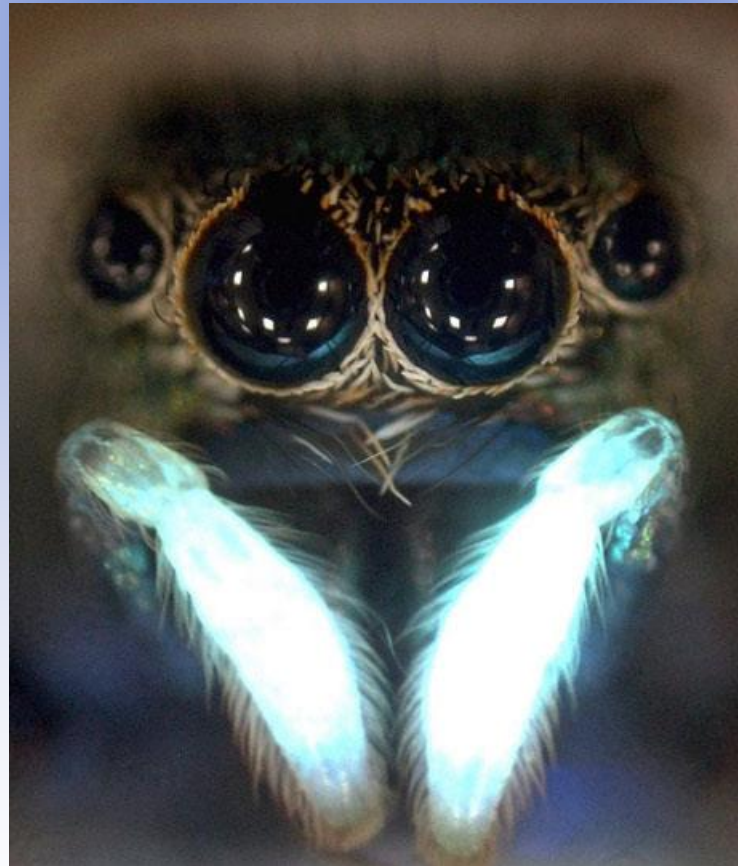
What to watch out for in the field!

Spiders

Bees

Raccoons

Mosquitoes



Snakes

Possums

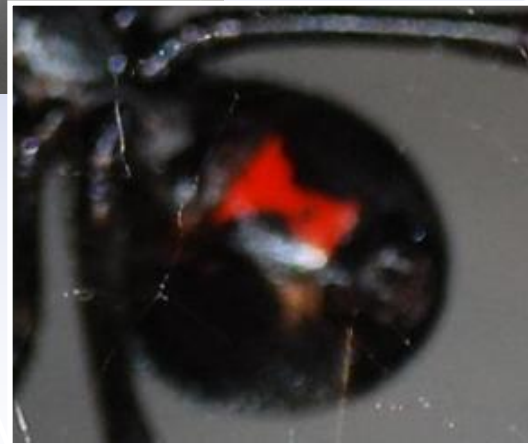
Ticks

Poison Ivy

Black Widow Spider

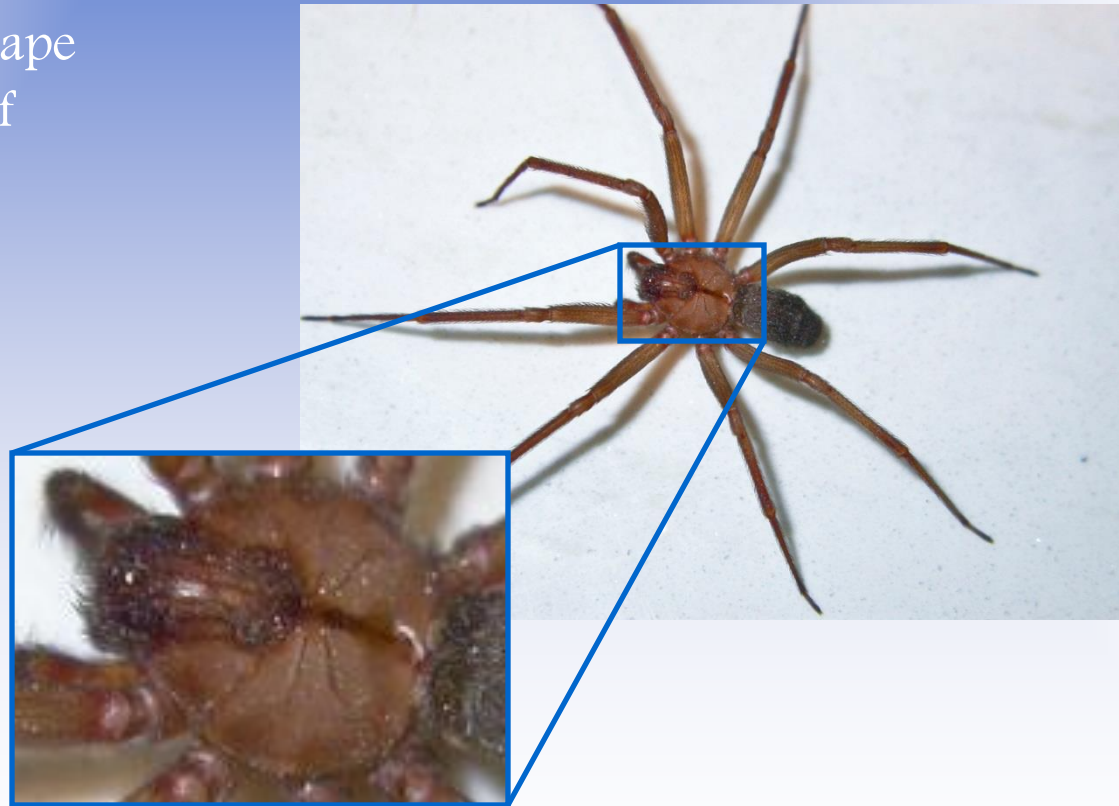


Classic Hourglass
Shape on the
bottom half of the
abdomen.



Brown Recluse Spider

Classic Violin Shape
on the top half of
the abdomen.



Beneficial Allies



Venomous Snakes



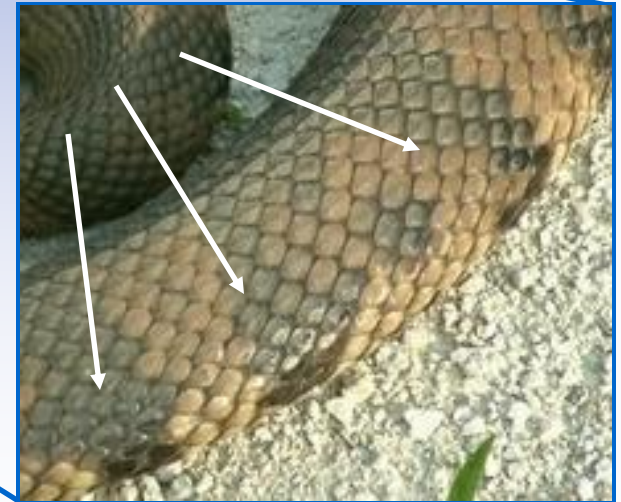
Copperheads



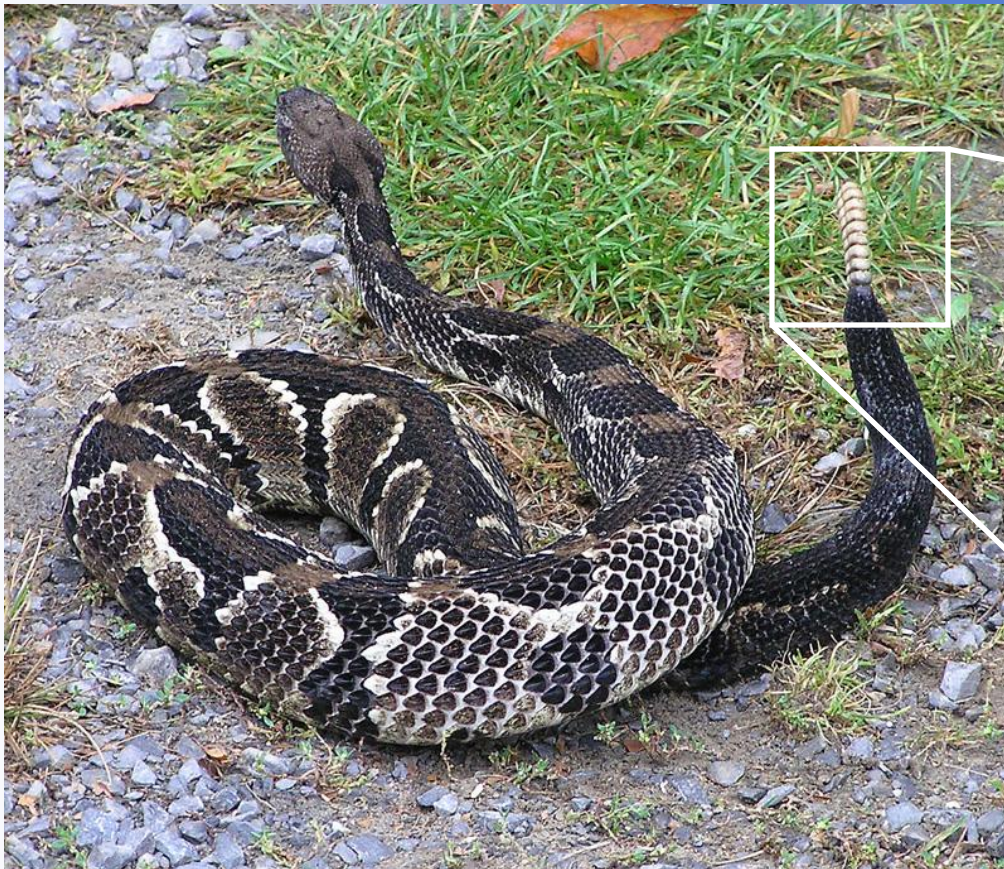
“Hourglass” dark brown spots on light brown body. And of course ... copper head.

Cottonmouth “Water Moccasin”

Mostly dark on top, sides have “cross” patterns. Juveniles are much brighter with more distinct patterns.



Canebrake Rattlesnake



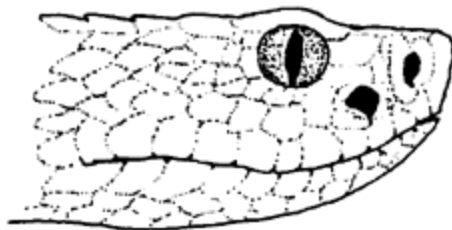
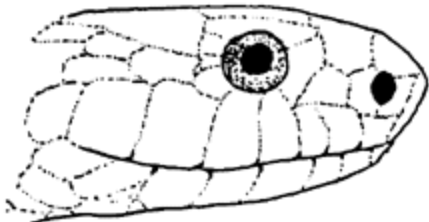
Look and Listen for the distinctive rattle and unique pattern.

Harmless Snakes



Rough Green Snake

Snake Identification



Heads of nonvenomous (top) and venomous snakes (bottom)



Venomous

Exception: Brown watersnake



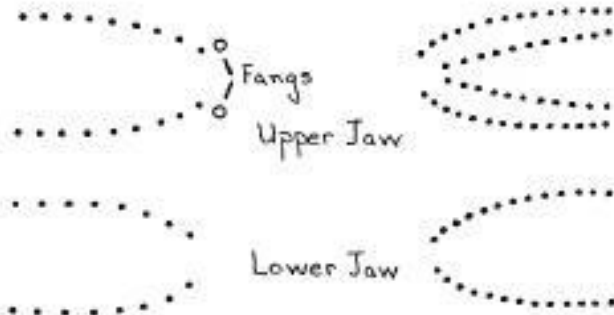
Nonvenomous

Exception: Coralsnake

Poisonous

Nonpoisonous

Teeth Marks from Bite



Not so Nice Plants!



Poison Ivy

Three leaves ... let it be!

Leaves



Virginia Tech Weed I.D. Guide



Root / Vine

Non-Poisonous Vines



Virginia Creeper



Wild Grape



Japanese Knotweed

Comparison

Poison Ivy



Virginia Creeper



Flying Insects



Honeybees



Colonies will build a hive in a tree hollow.

Can swarm in defense if threatened.
Stingers will break off in the skin.



Yellow Jackets



Can nest in the ground. When disturbed, can swarm. Leaving immediately is recommended. Wait until swarm dissipates or treatment is done.



Bumble Bees

Social Bees. Queen will locate a nest in early Spring, usually in the ground, such as an abandoned mouse burrow.



Bald Faced Hornets



Social Colonies. Nests are rounded and up in trees or in bushes. Will swarm when provoked or when nest is disturbed.



Paper Wasps

Paper wasps will have smaller nests than Bald-Face hornets, and although they can sting, are generally highly tolerant of activity near nests. Nests can be located both on the ground as well as outside of buildings and homes.



Carpenter Bee



Solitary bees also known as Wood-Boaring Bee's. Nest in untreated wood



Cicada Killer



Singular in numbers.
Generally active during July,
and nests in a tiny hole in the
ground. Fairly harmless to
humans.



Vectors of Disease



Mosquitoes



Ticks



Lone Star Tick

 TickEncounter Resource Center

Amblyomma americanum (Lone Star ticks)



Larva



Nymph



Adult Male



Adult Female

Brown Dog Tick

 **TickEncounter** Resource Center

***Dermacentor variabilis* (American Dog ticks)**



Larva



Nymph



Adult Male



Adult Female

Black Legged Tick

 TickEncounter Resource Center ***Ixodes scapularis* (Blacklegged ticks or Deer ticks)**



Larva



Nymph

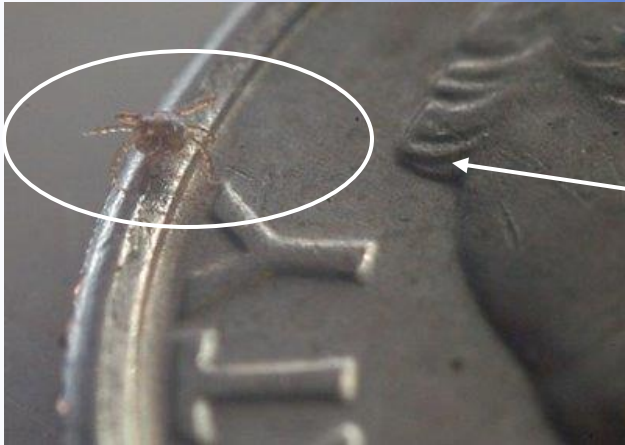


Adult Male



Adult Female

Chiggers



Yes, that is a dime!

This is a bad case, but
can be prevented with
ease. Just use repellent!!



Encounters of the Mammal Kind



These animals can be rabid!

Report to Animal Control if you see them acting strangely. These are nocturnal animals and normally are not seen during the day.

Work Hard and Stay Safe

