

# Order Form

## The Mosquitoes of the Mid-Atlantic Region: An Identification Guide

Bruce Harrison, Brian Byrd, Charles Sither, and Parker Whitt

**Available February 2016**

This 201 page spiral-bound 8.5 X 11 inch guide includes dichotomous keys to the adult females and fourth instar larvae for 8 states (DE, GA, NC, MD, PA, SC, VA, and WV) with more than 585 novel Adobe Illustrator figures. Printed on 100 lb gloss paper, this guide includes sections such as: 1) Taxonomic Interpretations, 2) State Records, 3) Basic Morphology, 4) The Acquisition of Characters to Separate Larval Instars, 5) Extensive Notes, 6) Couplet Sequences, 7) Illustration Index, 8) How to Use a Dichotomous Key, 9) Glossary, and others. The keys were thoughtfully reviewed by experts from the Smithsonian Institute, North American Mosquito Control Districts, and Academia. This long awaited guide will be available for shipping in February 2016.

Item	Quantity	Price per key	Total
Mosquito key		\$30	
		<b>Grand total:</b>	

Name: \_\_\_\_\_

Email Address: \_\_\_\_\_

Phone Number: \_\_\_\_\_

Employer: \_\_\_\_\_

Mailing Address (where key will be mailed): \_\_\_\_\_

Method of Payment:  Check (payable to NCMVCA)  Invoice required (emailed to address given)  Credit card (see below)  
 Credit card (Please check here if you wish to be contacted by phone to provide information)

Card number: \_\_\_\_\_ Expiration date: \_\_\_\_\_

Code on back of card: \_\_\_\_\_ Billing zip code: \_\_\_\_\_

**Email or Mail Completed Form and Payment To:**

Stephanie Richards (NCMVCA Secretary-Treasurer)  
3403 Carol Belk Building, 300 Curry Court  
Greenville, NC 27858

[richardss@ecu.edu](mailto:richardss@ecu.edu)



# The Mosquitoes of the Mid-Atlantic Region: An Identification Guide

Bruce A. Harrison  
 Brian D. Byrd  
 Charles B. Sither  
 Parker B. Whitt

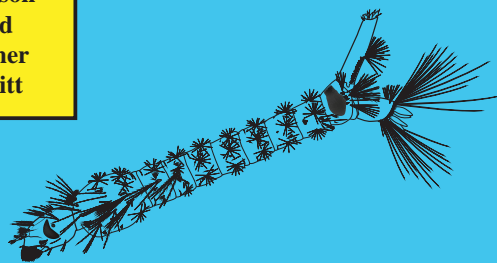


TABLE OF CONTENTS

Section	Title	Page
I.	Introduction	1
II.	Taxonomic Interpretations and Sources	7
III.	Mosquito Taxa Recognized in the Mid-Atlantic Region	17
IV.	Basic Morphology of Mosquitoes	20
V.	Using a Dichotomous Key	23
VI.	Distinguishing Female from Male Mosquitoes	23
VII.	The Adult Keys	24
	Adult Morphology	25
	Key to the Female Genera	28
	(Includes <i>Coquillettidia perturbans</i> , <i>Toxorhynchites rutilus</i> , and <i>Wyeomyia smithii</i> )	
	Keys to Species (Adult Females):	
	<i>Aedes</i>	33
	<i>Anopheles</i>	55
	<i>Culex</i>	61
	<i>Culiseta</i>	66
	<i>Mansonia</i>	67
	<i>Orthopodomyia</i>	70
	<i>Psorophora</i>	71
	<i>Uranotaenia</i>	76
VIII.	The Importance of Identifying Larval Instars	78
IX.	Acquisition of Characters to Separate the Larval Instars	80
X.	The Larval Keys	83
	Larval Morphology	84
	Key to Genera of Fourth Instar Larvae	86
	(Includes <i>Coquillettidia perturbans</i> , <i>Toxorhynchites rutilus</i> , and <i>Wyeomyia smithii</i> )	
	Keys to Species (4 <sup>th</sup> Instar Larvae):	
	<i>Aedes</i>	92
	<i>Anopheles</i>	114
	<i>Culex</i>	123
	<i>Culiseta</i>	130
	<i>Mansonia</i>	133
	<i>Orthopodomyia</i>	134
	<i>Psorophora</i>	135
	<i>Uranotaenia</i>	140
XI.	Notes (1-24) Referenced in the Keys	141
XII.	Glossary	149
XIII.	State Records	166
XIV.	Table of Taxonomic Actions and New Records	183
XV.	Couplet Sequences (Species)	184
XVI.	Illustration Index (Terminal Couplets)	187
XVII.	Vector Graphics and Illustration Sources	189
XVIII.	References	190
XIX.	Biographical Sketches	200

29(28). Abdominal segments VII-VIII flattened laterally like a flea from dorsal view (Fig. 146); tip of abdomen rounded from side view (Fig. 147); scutum with silver-white lateral areas (Fig. 148); head scales entirely white or cream colored, including long erect forked scales (Fig. 149). . . . . 30

Abdominal segments VII-VIII not flattened laterally from dorsal view (Fig. 150); tip of abdomen pointed from side view (Fig. 151); scutum with lateral pale areas yellow or bronze colored (Fig. 152); head with submedian or lateral dark scale patches and with pale or dark erect forked scales (Fig. 153). . . . . 31

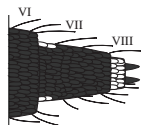


Fig. 146

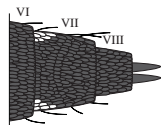


Fig. 150



Fig. 147

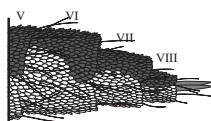


Fig. 151

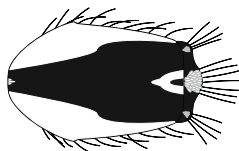


Fig. 148

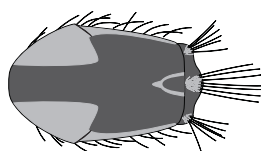


Fig. 152

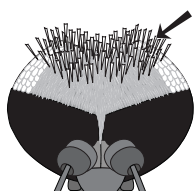


Fig. 149

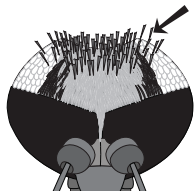


Fig. 153

Key to Species of Fourth Instar Larvae of *Orthopodomyia* (= *Or.*)

1. Abdominal segment VIII (and often VI and VII) with large saddle-like plate (Fig. 552); siphon seta 1-S with more than 4 branches (Fig. 552); seta 3-VIII very large (Fig. 552); abdomen usually red or orange. . . . . *Or. signifera*

Abdominal segments VI-VIII without large plates (Fig. 553); seta 1-S short with 2-4 branches (Fig. 553); seta 3-VIII small (Fig. 553); abdomen usually pale creamy white . . . . . *Or. alba*

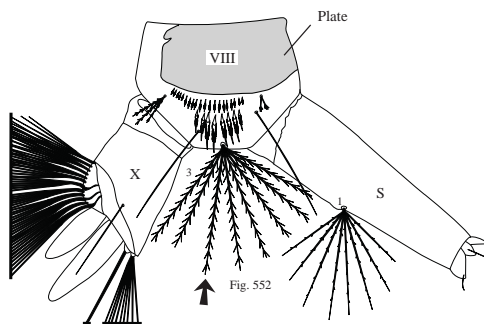


Fig. 552

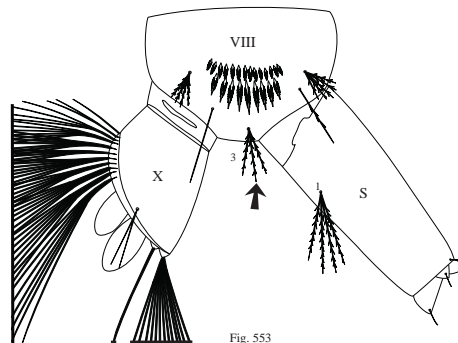


Fig. 553  
134