

Small/Minor Genera:

Coquillettidia, Culiseta, Orthopodomyia,
Toxorhynchites, and Uranotaenia

Aedes

aegypti
albopictus
cinereus
vexans
cantator
canadensis
atlanticus
atropalpus
aurifer
fulvus pallens
grossbecki
hendersoni
dupreei
trivittatus
triseriatus
tormentor
thibaulti
taeniorhynchus
stimulans
sticticus
sollicitans
mitchellae

Aedes cont.

japonicus
infirmatus

Coquillettidia

perturbans

Culex

territans

salinarius

restuans

quinquefasciatus

pipiens

peccator

erraticus

tarsalis

Culiseta

inorata
melanura

Orthopodomyia

alba
signifera

Psorophora

columbiae
ciliata
cyanescens
discolor
ferox
horrida
howardii
mathesoni

Toxorhynchites

rutilus septentrionalis

Uranotaenia

sapphirina

Wyeomyia

smithii

Anopheles

atropos
barberi
bradleyi
crucians
punctipennis
quadrimaculatus
smaragdinus
walkeri

Coquillettidia perturbans

Culiseta melanura

Culiseta inornata

Orthopodomyia signifera

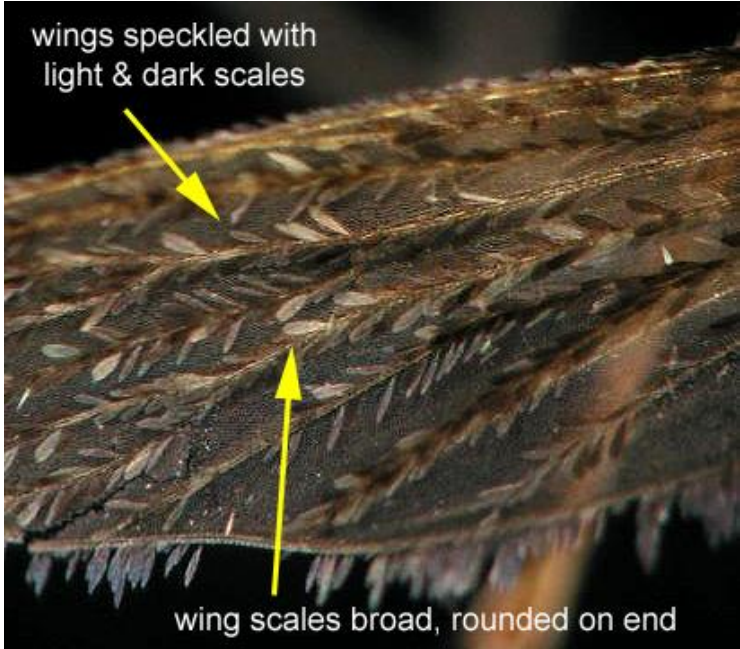
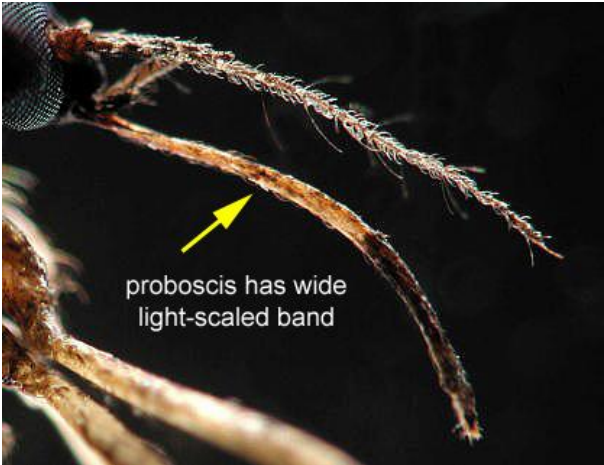
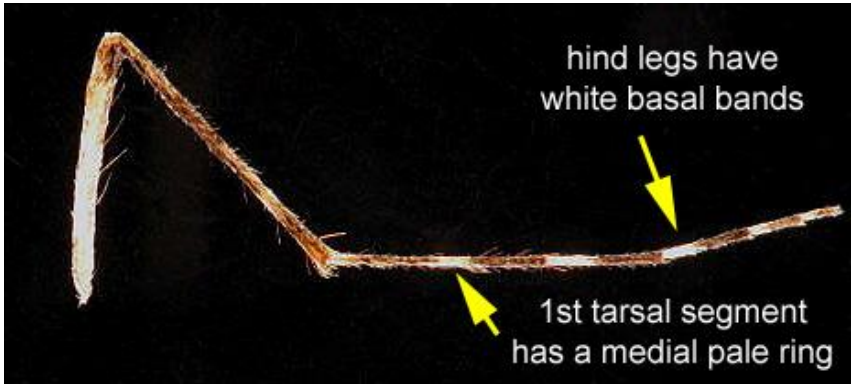
Toxorhynchites rutilus

Uranotaenia sapphirina

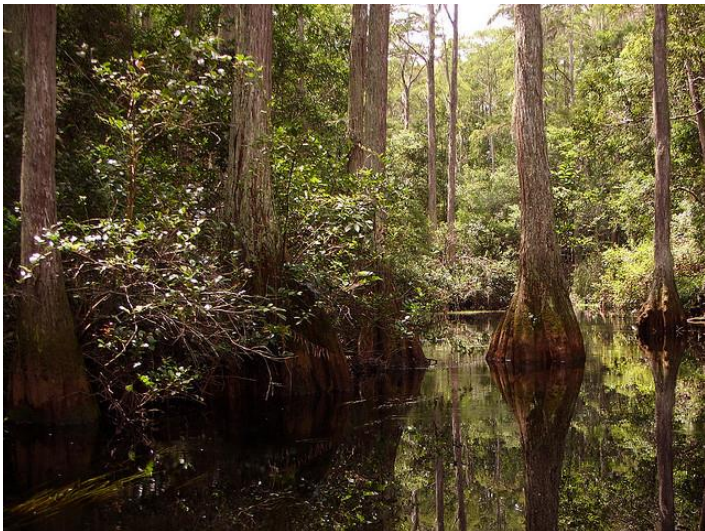
Coquillettidia perturbans



Coquillettidia perturbans



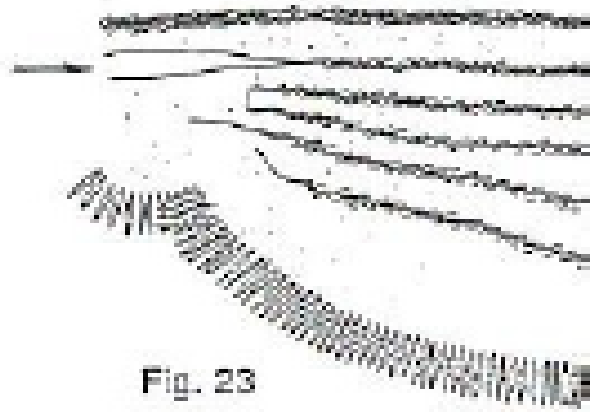
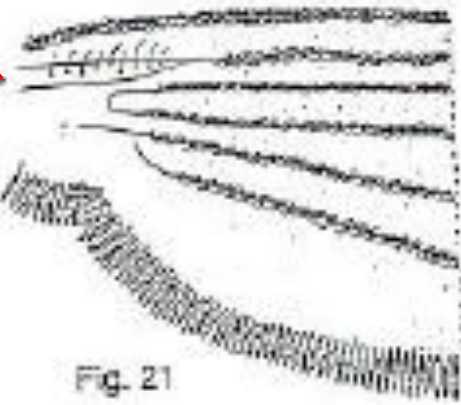
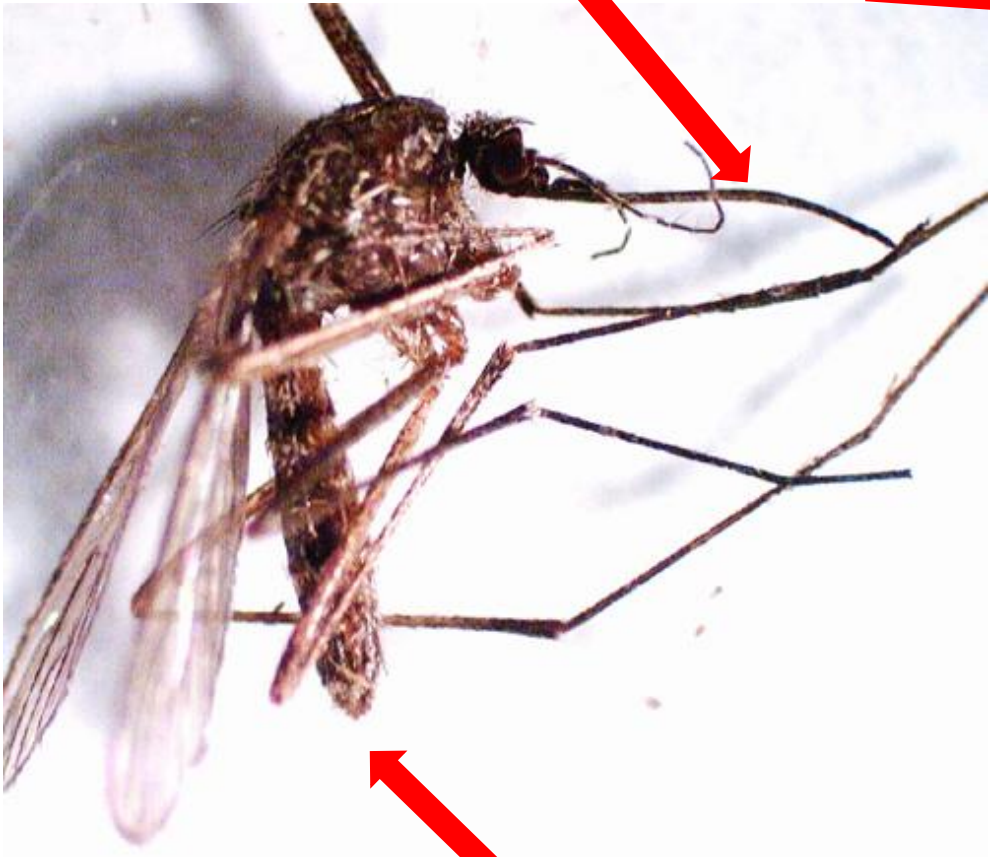
Culiseta melanura



Culiseta melanura

Long proboscis

Armpit hair

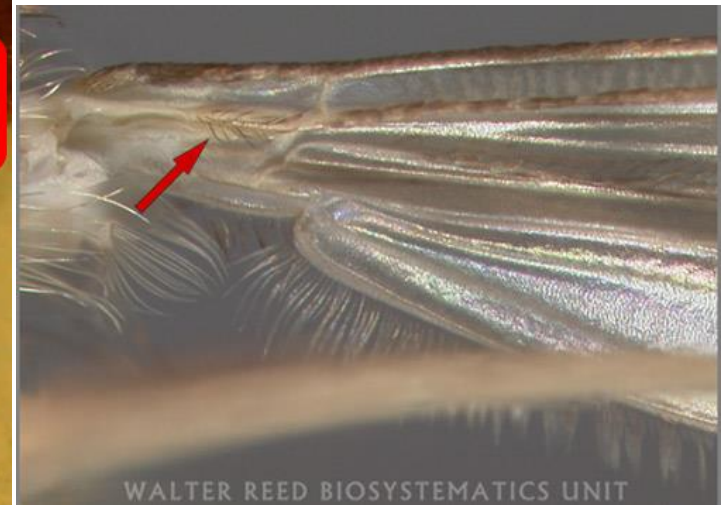


Rounded abdomen

Culiseta melanura



Hairy Chest



Photograph by Judith Stoffer, Walter Reed
Biosystematics Unit

Orthopodomyia signifera

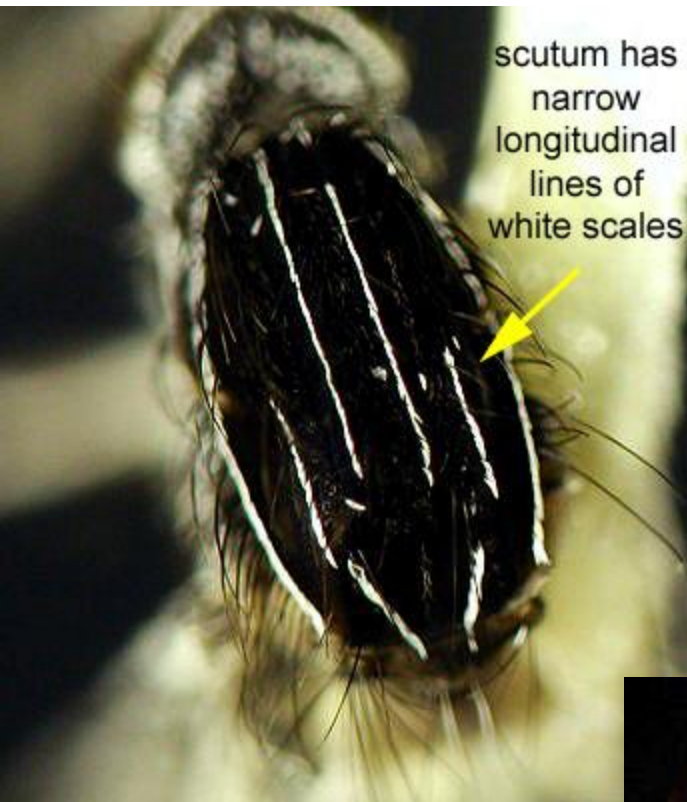


bugguide.net



missedmanners.wordpress.com

Orthopodomyia signifera



fme1.ifas.ufl.edu

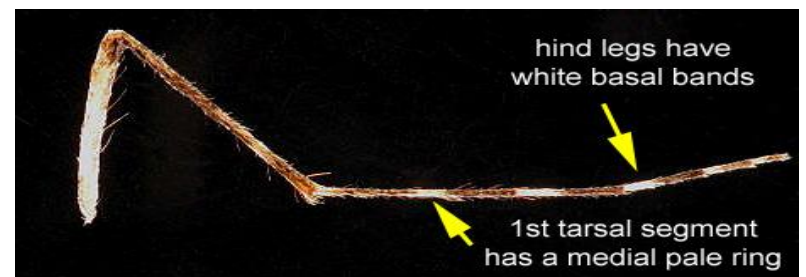
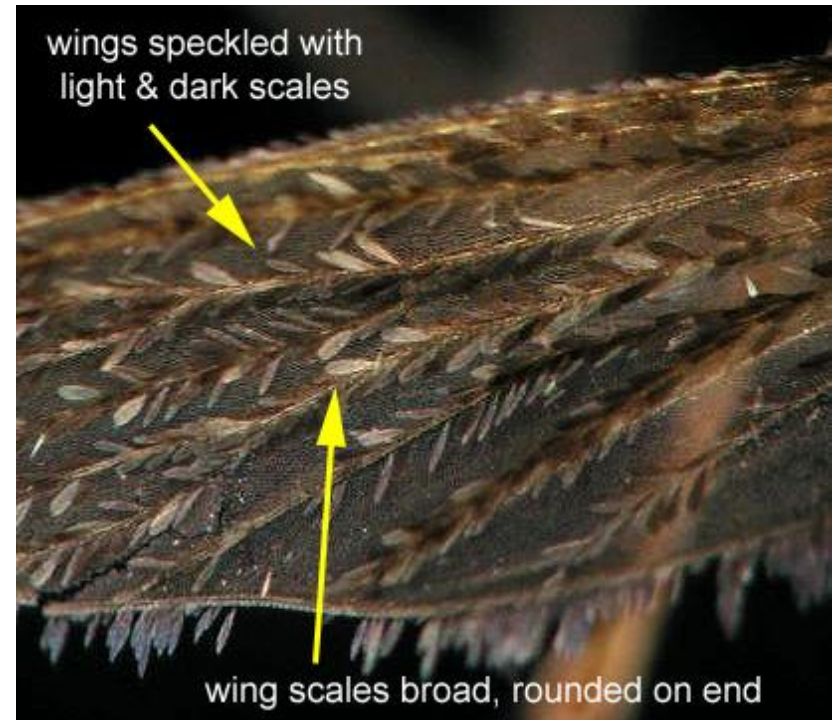


fme1.ifas.ufl.edu

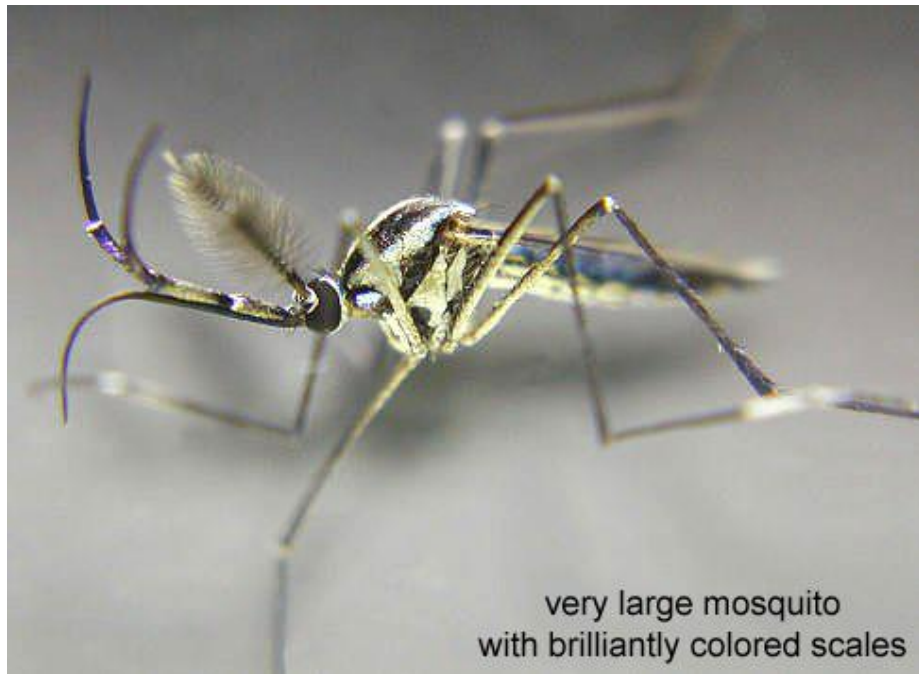


fme1.ifas.ufl.edu

Or signifera vs *Cq perturbans*

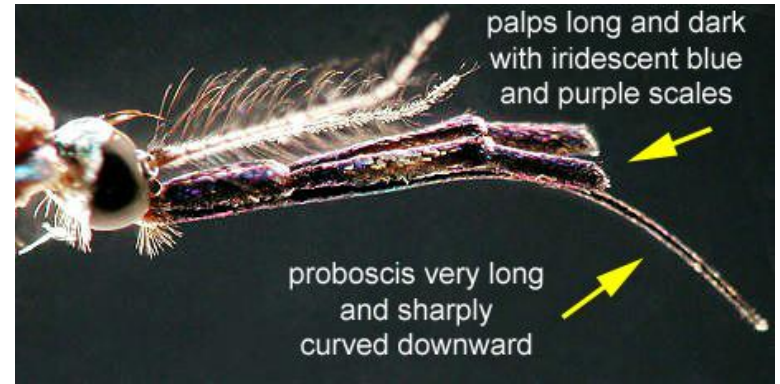


Toxorhynchites rutilus



very large mosquito
with brilliantly colored scales

fmel.ifas.ufl.edu



palps long and dark
with iridescent blue
and purple scales

proboscis very long
and sharply
curved downward

fmel.ifas.ufl.edu



t_groedam@yahoo.com

flickr.com

Uranotaenia sapphirina



Insects of Wisconsin ©2006 Pete DeVries

designerget.com

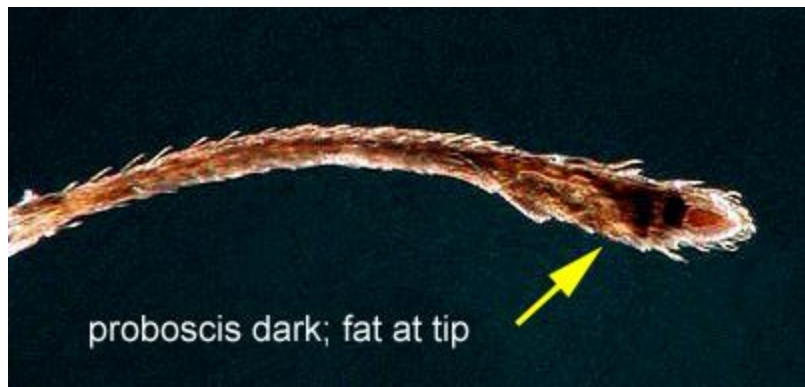


longitudinal stripe
of iridescent
sapphire blue
scales on scutum

fmel.ifas.ufl.edu



phsource.us



proboscis dark; fat at tip

fmel.ifas.ufl.edu



fmel.ifas.ufl.edu