

Genus: Psorophora

Penelope Smelser, Environmental Health Specialist

Norfolk Department of Public Health

757-683-8662

Penelope.Smelser@Norfolk.gov

Species

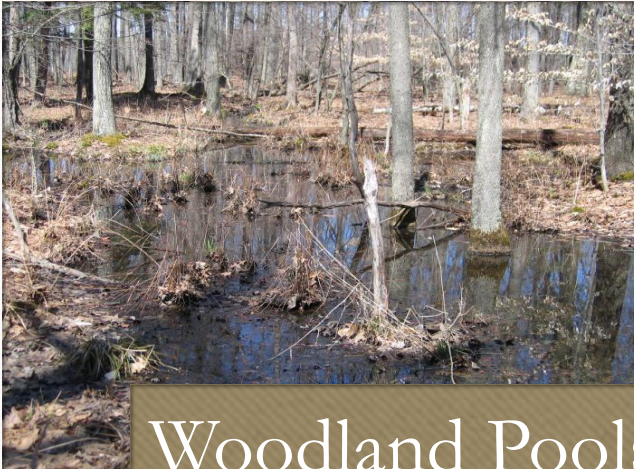
Psorophora ciliata

Psorophora howardii

Psorophora ferox

Psorophora columbiae

Habitat



Woodland Pools



Floodwater



Brackish Water

Behavior

Voracious Biters

Mostly Confined
to Wooded Areas

Long Flight
Ranges

Low Disease
Transmittal Rates

Collected Mainly
in CDC Light
Traps and BG
Sentinel Traps

Characteristics

Pointed Abdomen

Apical Banding on
the Abdomen

Above Average
Size

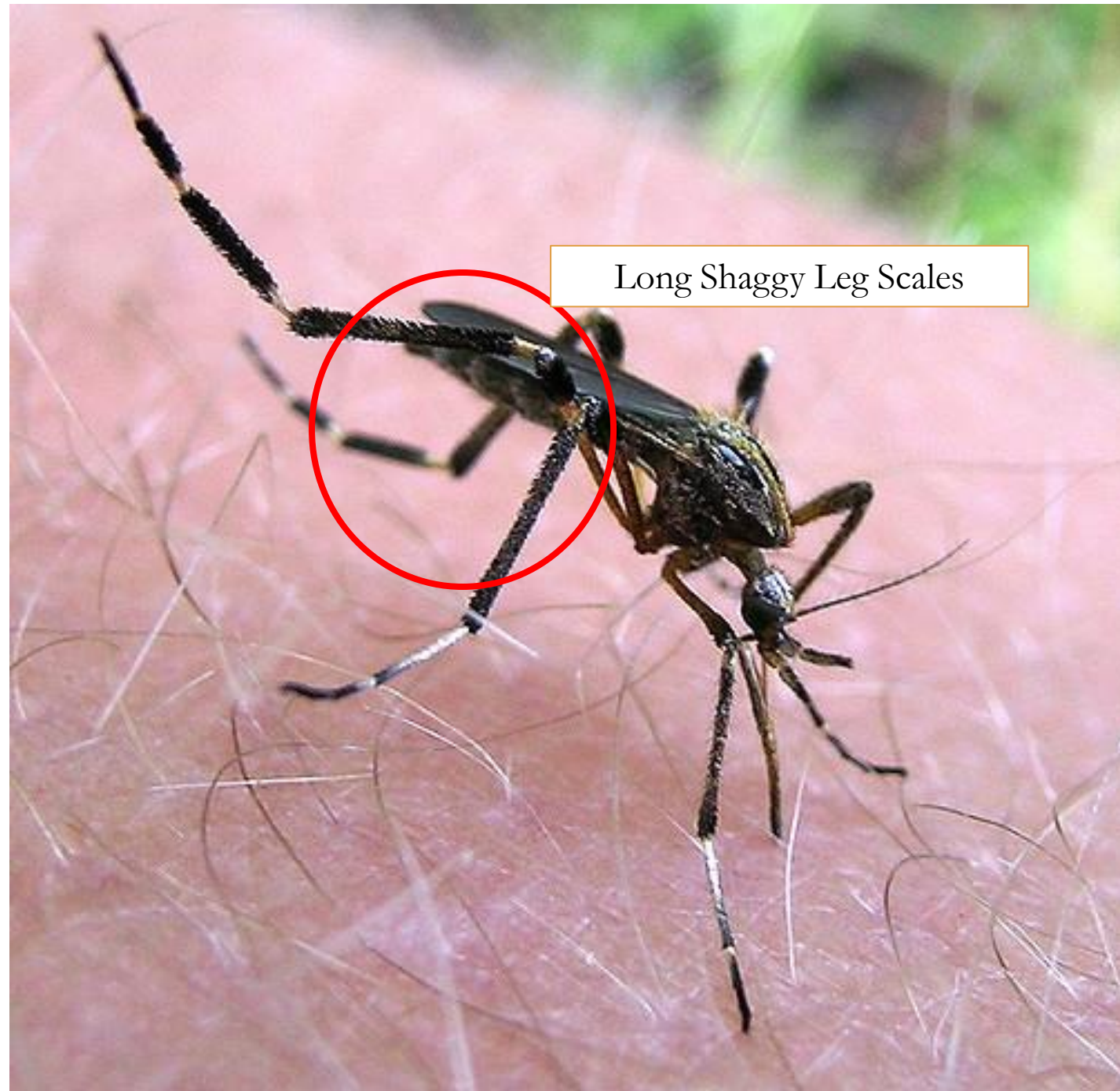
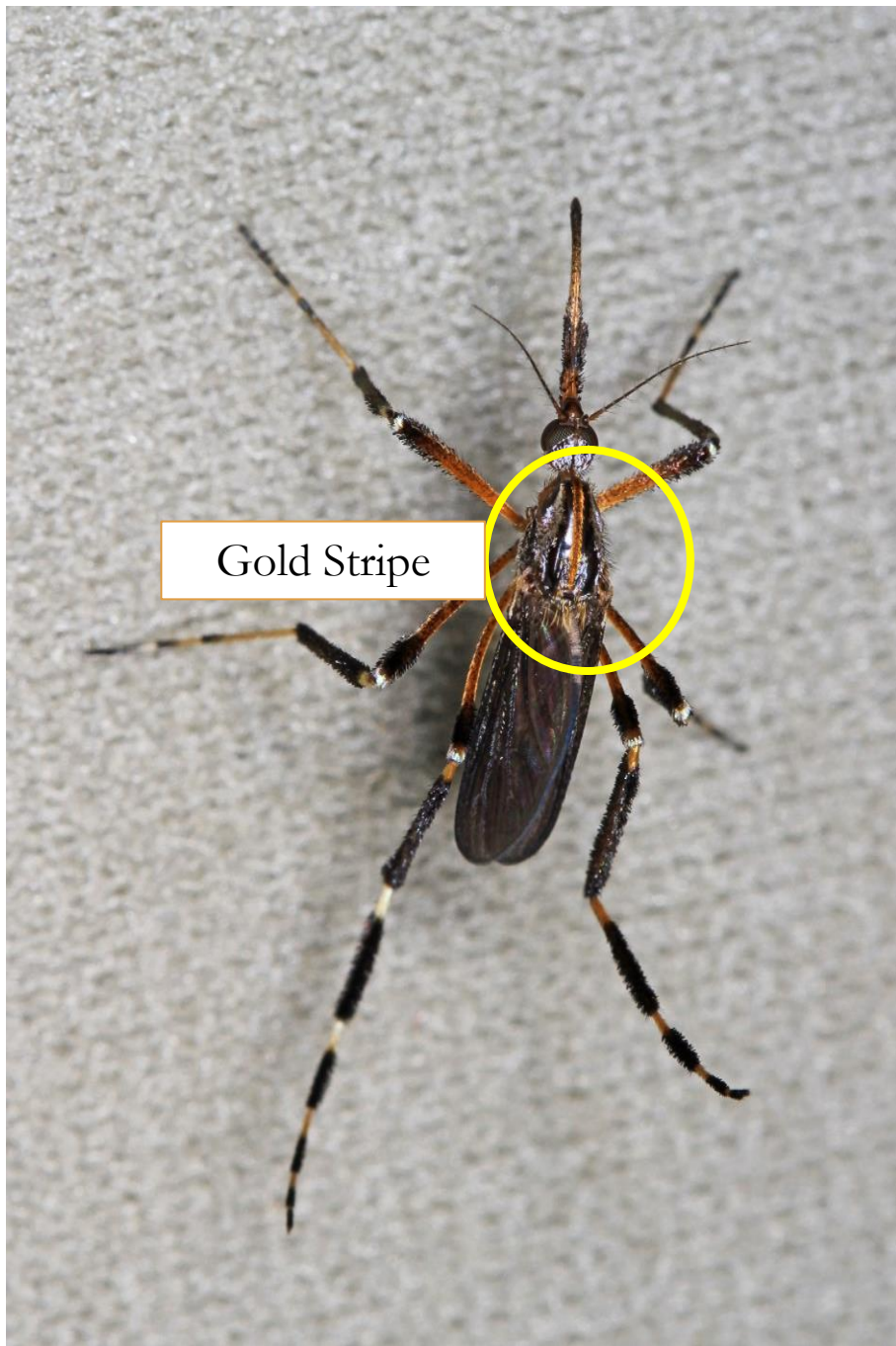
Accelerated Life
Cycle

Eggs can
withstand long
periods of
dessionication

Psorophora ciliata



- Very Large
- Gold Stripe on Top of Thorax
- Gold Scales on the Proboscis
- Shaggy/Feathery Dark Leg Scales

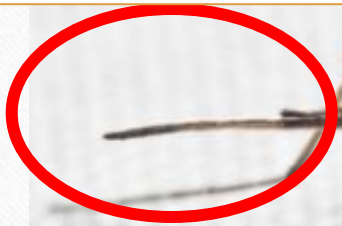


Psorophora howardii

- Very Large
- NO Gold Stripe on Top of Thorax
- Proboscis uniformly dark
- Dark Leg Scales but NOT Shaggy



No Gold Band



Leg Scales Less Shaggy

No Gold Stripe



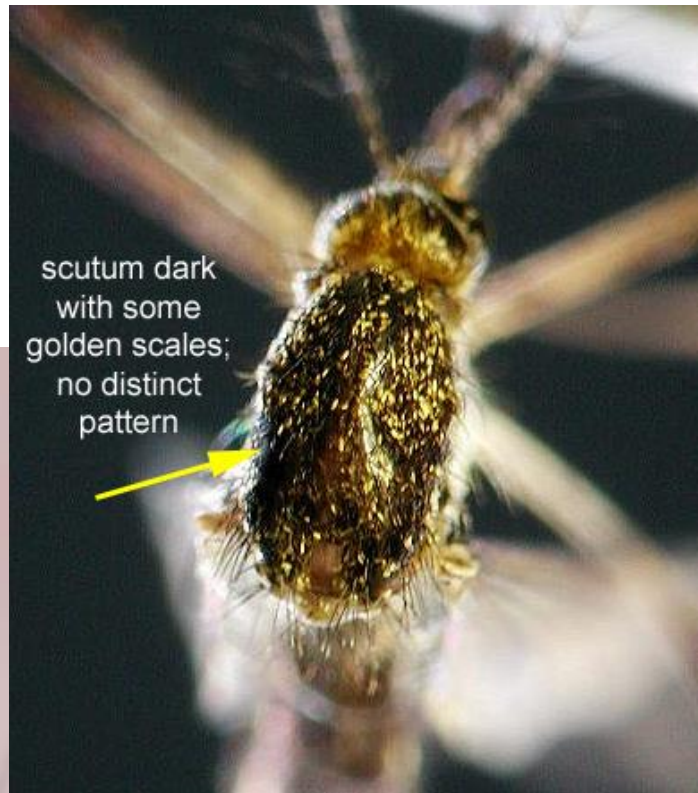
Psorophora ferox



- Pointed Abdomen with Gold Apical Banding
- Scutum speckled with brown and gold scales
- Overall Purple Coloring
- “Rainbow” Eyes
- White “socks”



White "Socks"



scutum dark
with some
golden scales;
no distinct
pattern

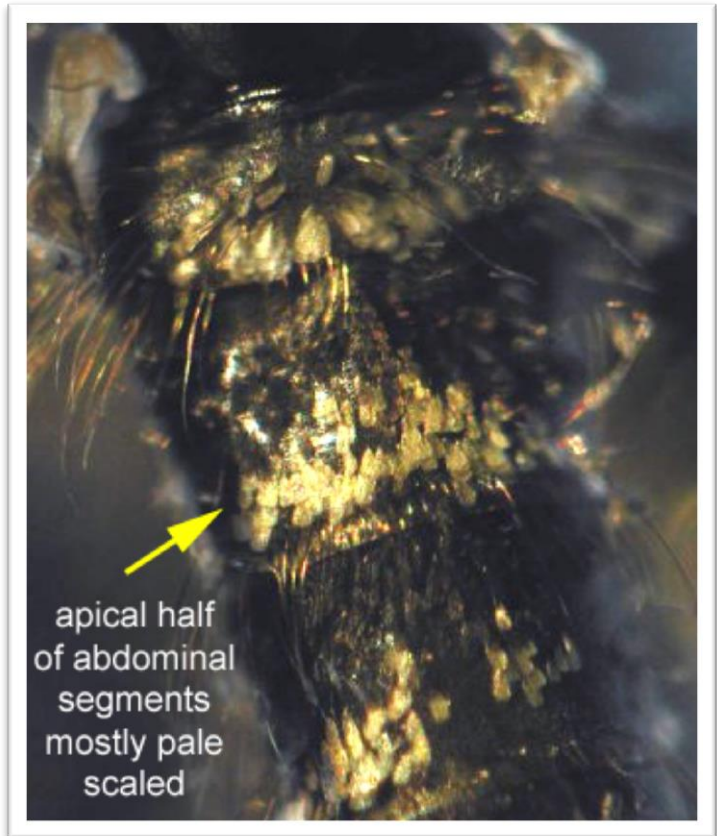
Psorophora columbiana

- White and Black Wing Scales
- Pale Band on Proboscis
- White Tips on Palps
- Banded Legs
- Dark Brown/Black
- Incomplete white apical bands on abdomen

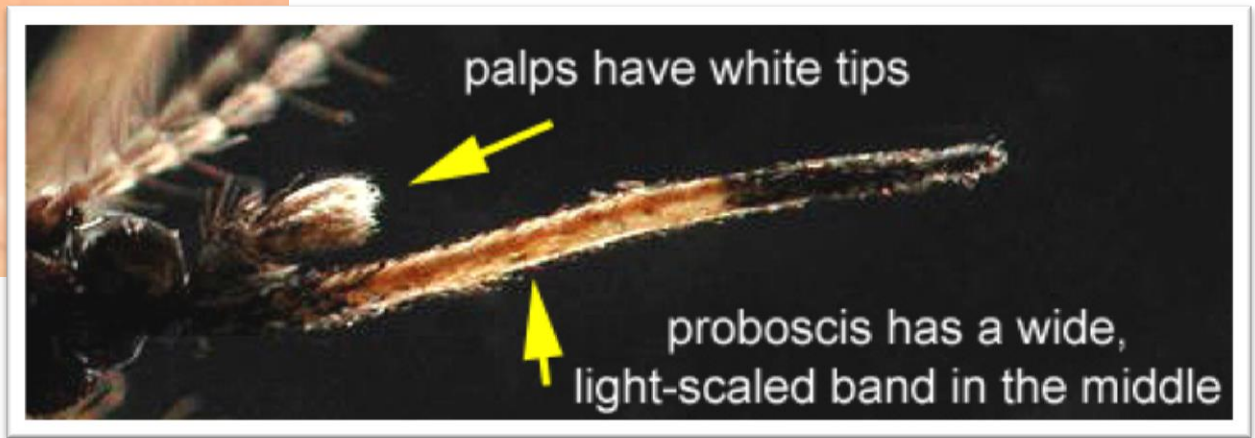




Dark and Light Wing Scales



apical half of abdominal segments mostly pale scaled



palps have white tips

proboscis has a wide, light-scaled band in the middle