



# The *Culex* Keep Coming

Karen Akaratovic  
Suffolk Mosquito Control





Quick reminder about  
Virginia's 2 newest species

*Culex nigripalpus* (left)  
&  
*Culex coronator* (right)





## *Culex coronator*

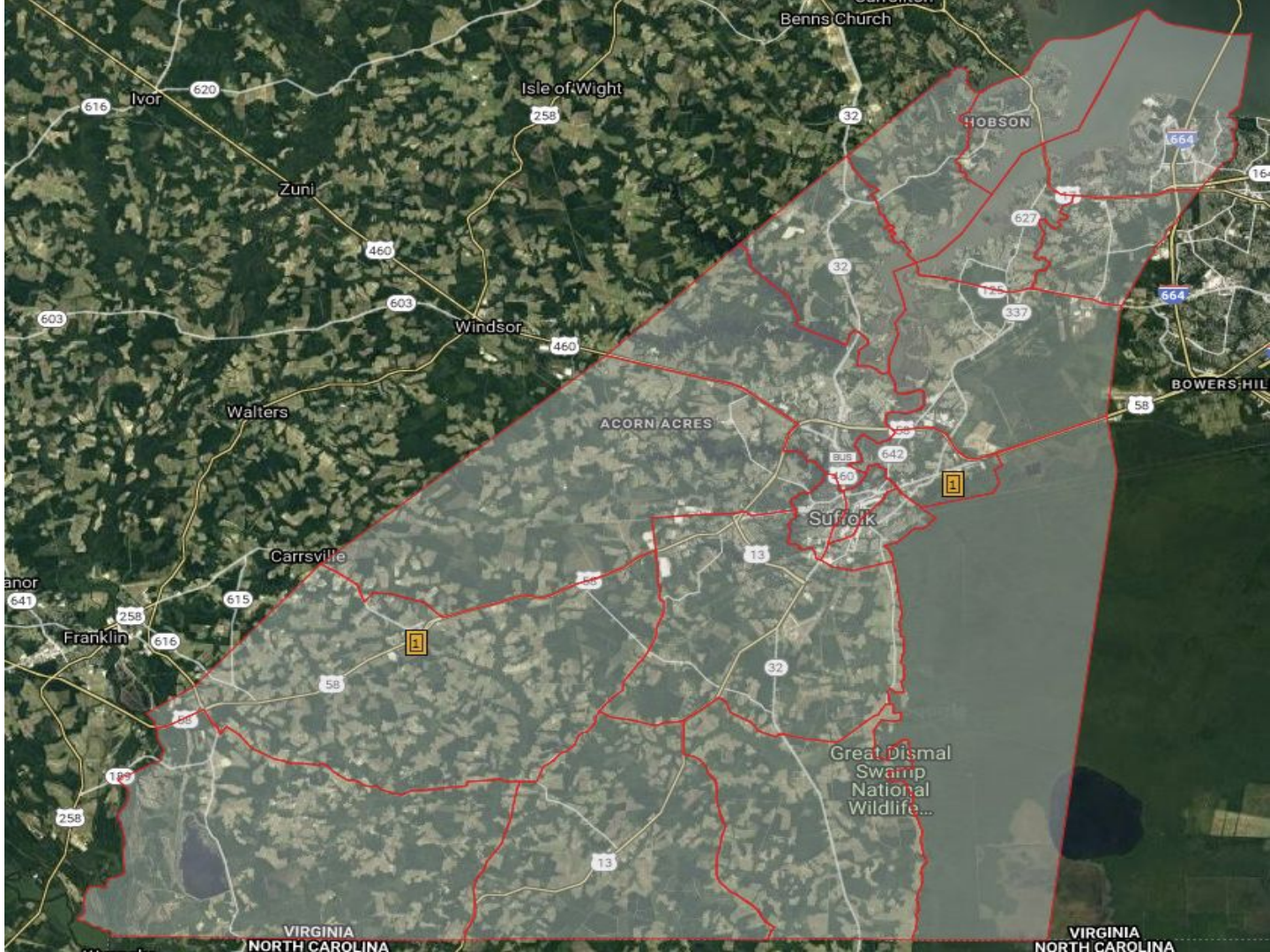
- First record in Virginia was discovered in Suffolk in 2016: November (1 ♀)
- None found 2017 - 2019
- 1 ♀ found in November 2020
- First specimen found in southwest, same site as first *Cx. nigripalpus*
- Second specimen found several miles northeast in the downtown area



# *Culex coronator*

Collection sites with number of specimens notated on map

- SW site (2016) is in Holland Community
- NE site (2020) is within 1 mile of the Great Dismal Swamp National Wildlife Refuge





## *Culex nigripalpus*

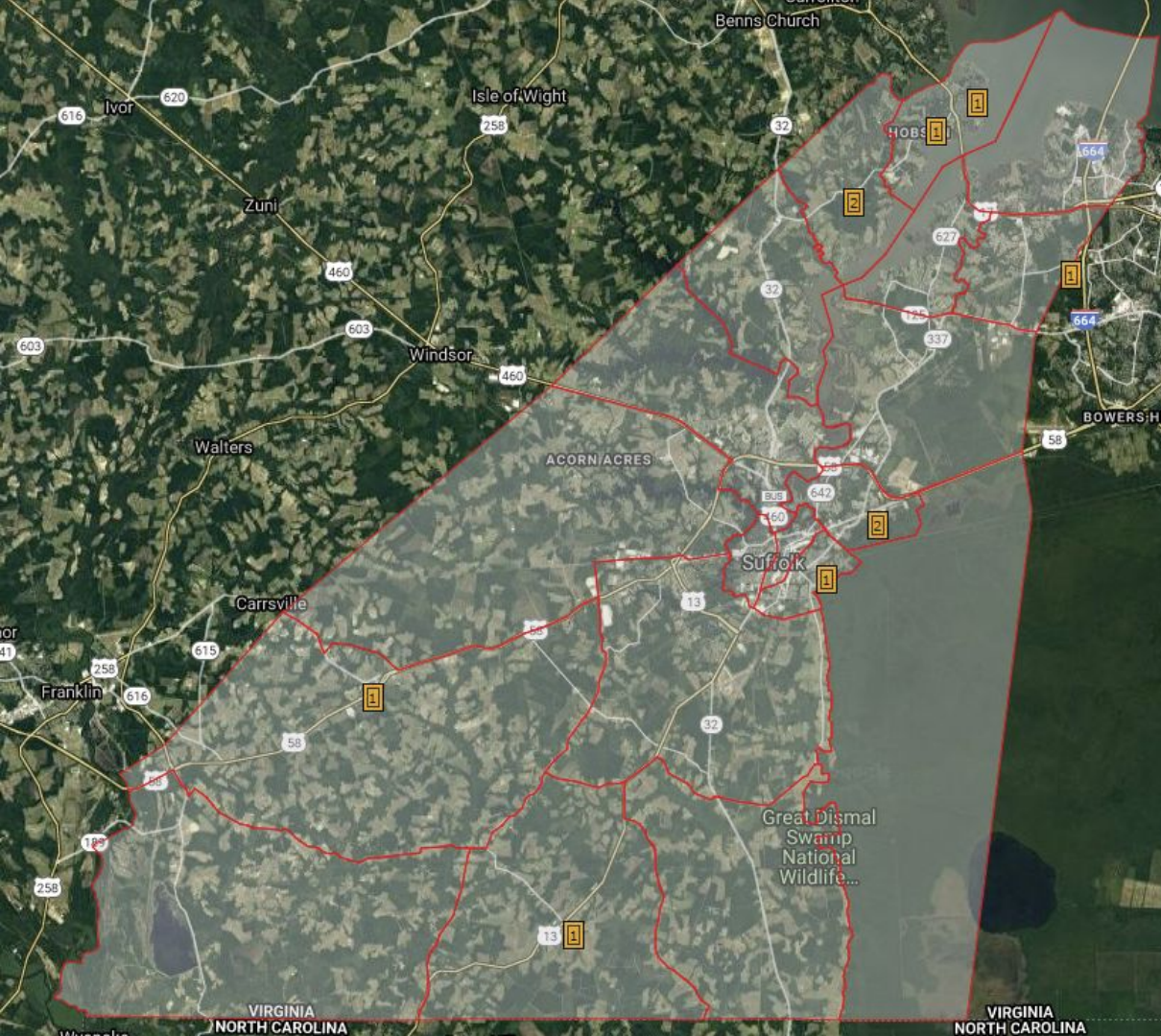


- First record in Virginia was discovered in Suffolk in 2017: October (4 ♀) & December (1 ♀)
- None found in 2018
- 2 in 2019: May (1 ♀) and October (1 ♀)
- 4 in 2020: November (4 ♀)
- Found at several sites throughout the city: south (about 2.5 miles from NC border) to northwest tip (border with Carrollton)



## *Culex nigripalpus*

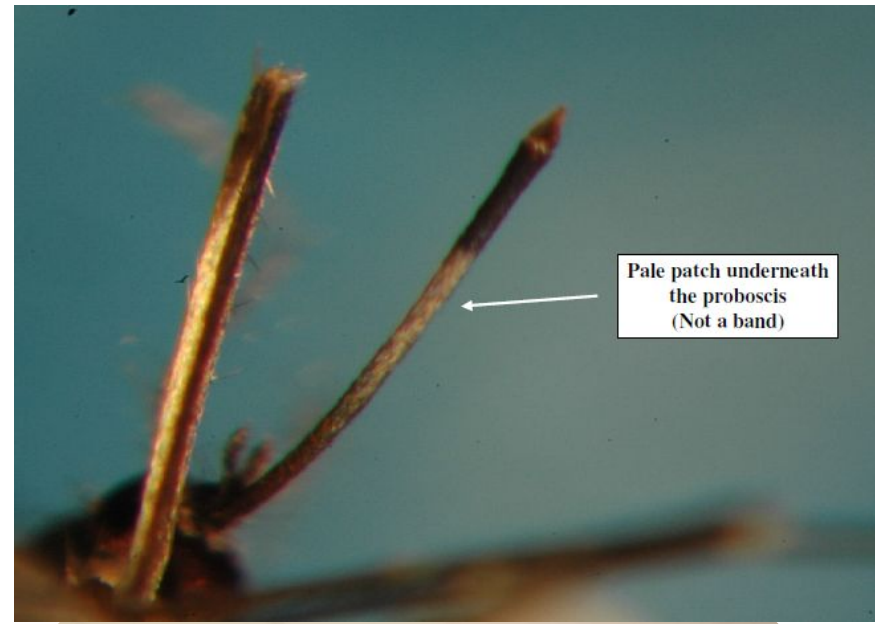
- Collection sites with number of specimens notated on map
- While not large numbers, range within the city is interesting
- S Central site is about 2.5 miles from NC border
- NE site is within a mile or two of Chesapeake and Portsmouth
- Far NW site is within a mile of Carrollton



Key characters to  
look out for

## Key characters for *Cx. coronator*

- 1 of only 2 *Culex* with banded legs in VA
- Hindtarsomeres 1-5 with apical and basal bands
- Proboscis with ventral pale patch  
(*Cx. tarsalis* has pale band, dorsal and ventral)
- Palpus all dark scaled
- Costal and subcostal wing veins dark

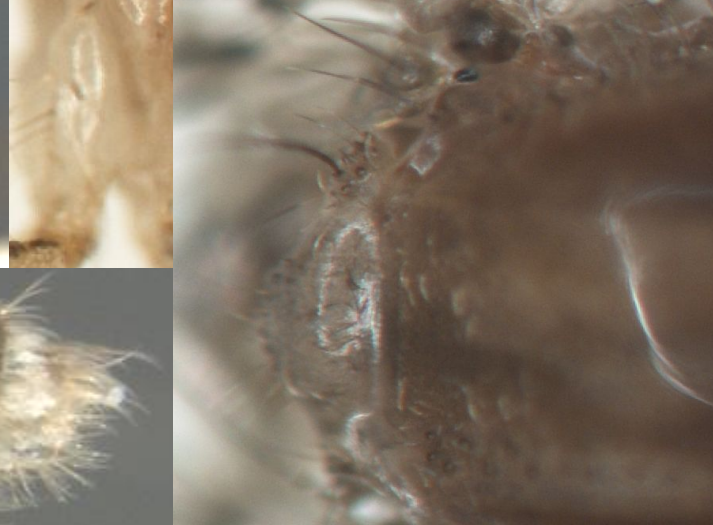
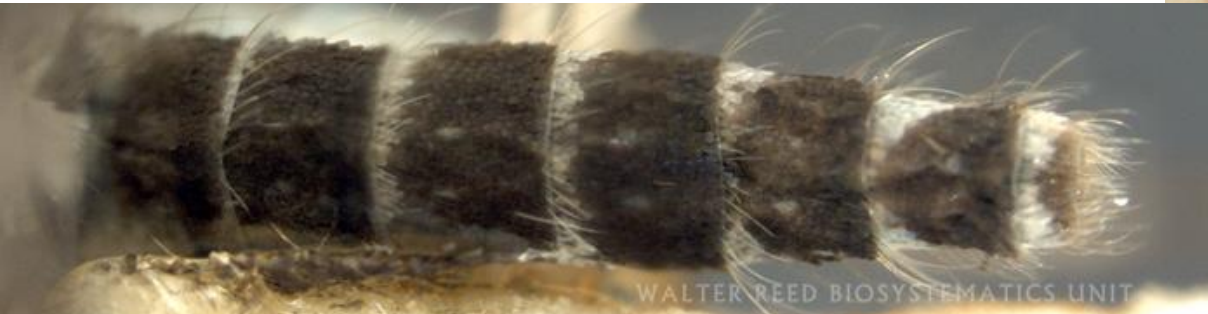


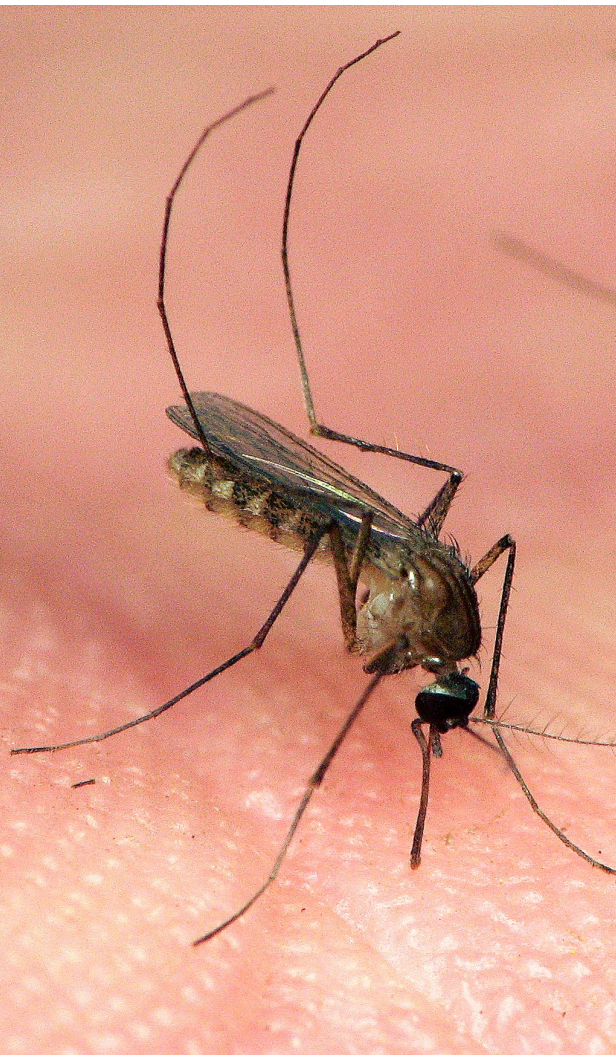


## *Key characters for Cx. nigripalpus*

Looks very much like a *Cx. salinarius*, *Cx. pipiens*, *Cx. restuans*, or *quinquefasciatus* except:

- Mesepimeron without median pale patch
- Like *Cx. sal* scutellum mid-lobe with basal dark scales
- Abdominal segment VII mostly dark
- Abdominal terga with lateral patches of light scales
- Sides of thorax appear quite glossy (not in ID book)





**Keep your eyes open, VA!**





