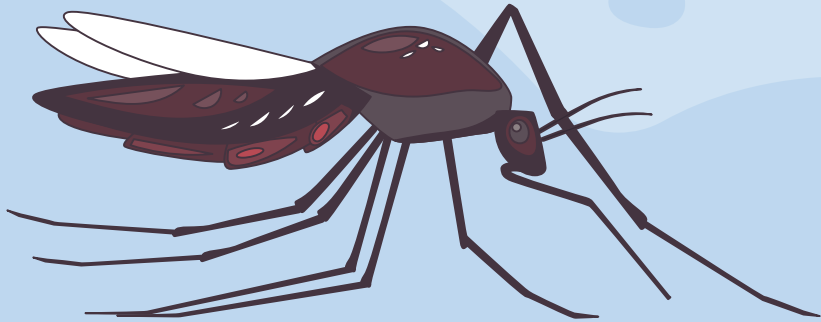


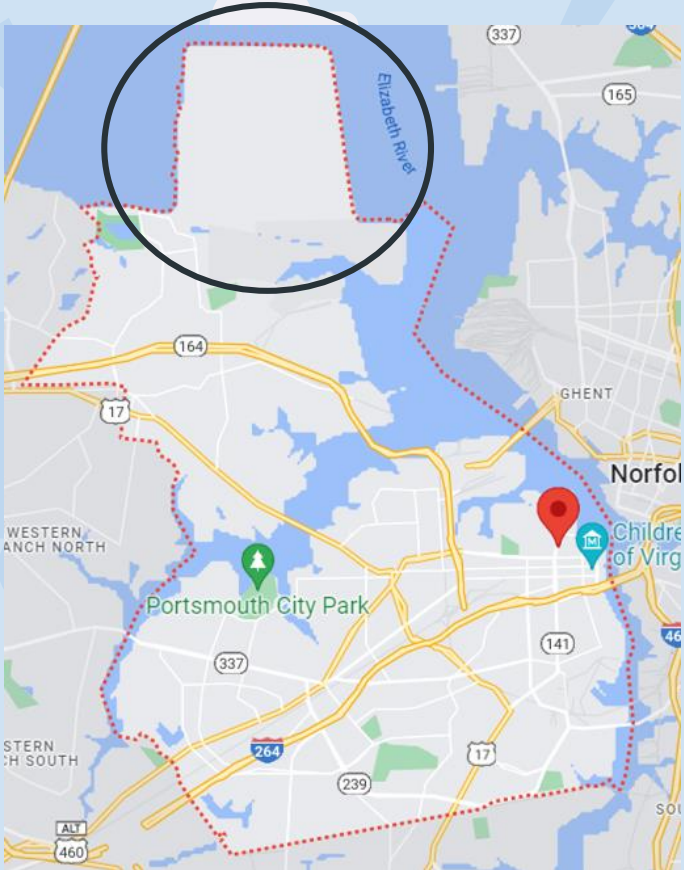


Aedes sollicitans and Craney Island



Addie Weddle
Mosquito Control Technician
Portsmouth Public Works

Craney Island Dredged Material Management Area



About Craney Island

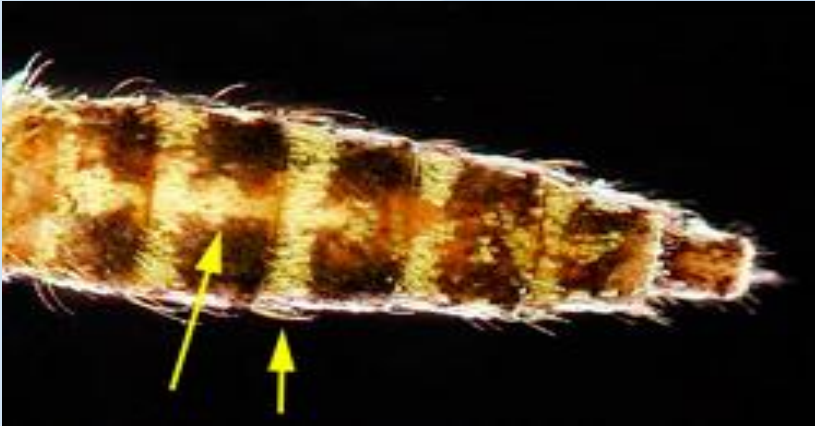
- Are those cranes?
- 2,500-acre confined dredged material disposal site
- 1940s disposal area for material dredged from the channels in the Hampton Roads area
- Under operation of the U.S. Army Corps of Engineers
- Critters on the island
- Two square miles



The Eastern Salt Marsh Mosquito



- About *Ae. sol*
- *Ae. sol*/breeding patterns



***Ae. sol* Heaven**



- Why *Ae. sol* love craney island
- Accelerated emergence
- Bad news for the surrounding neighborhoods



Ae. sol Management



Surveillance

- Inspection
- Dipping for larvae
- Mosquito traps
- Weather monitoring
- Identification

Spray Trucks

- Data from trap numbers
- Used weekly in the summer months between aerial spraying
- Churchland vs. south side of Portsmouth spray routes



Aerial Spraying

- Weather surveillance
- High trap counts
- Successful method for *Ae. sol*/Craney Island blooms

Before and After Aerial Spraying



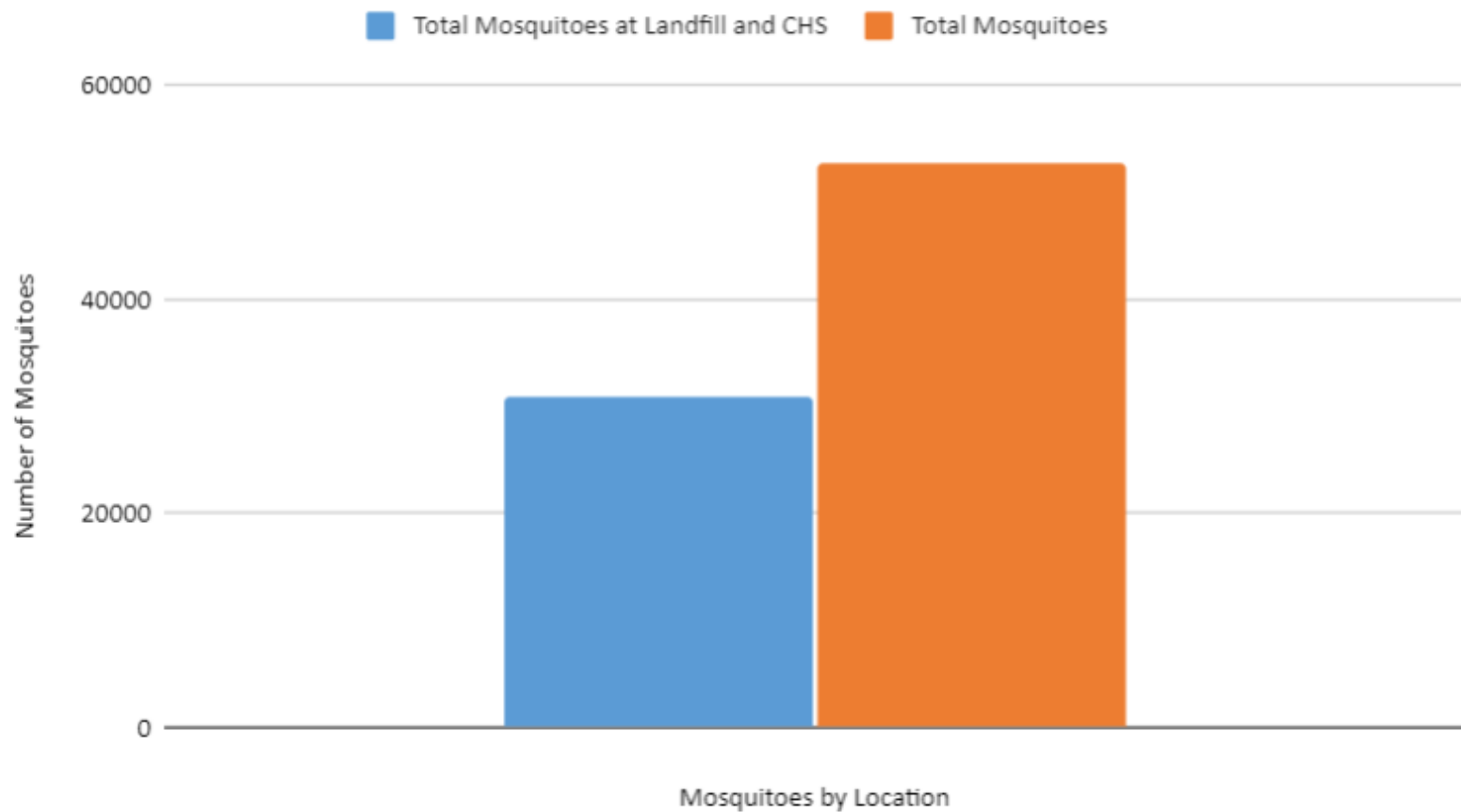
CDC Locations

Closest to

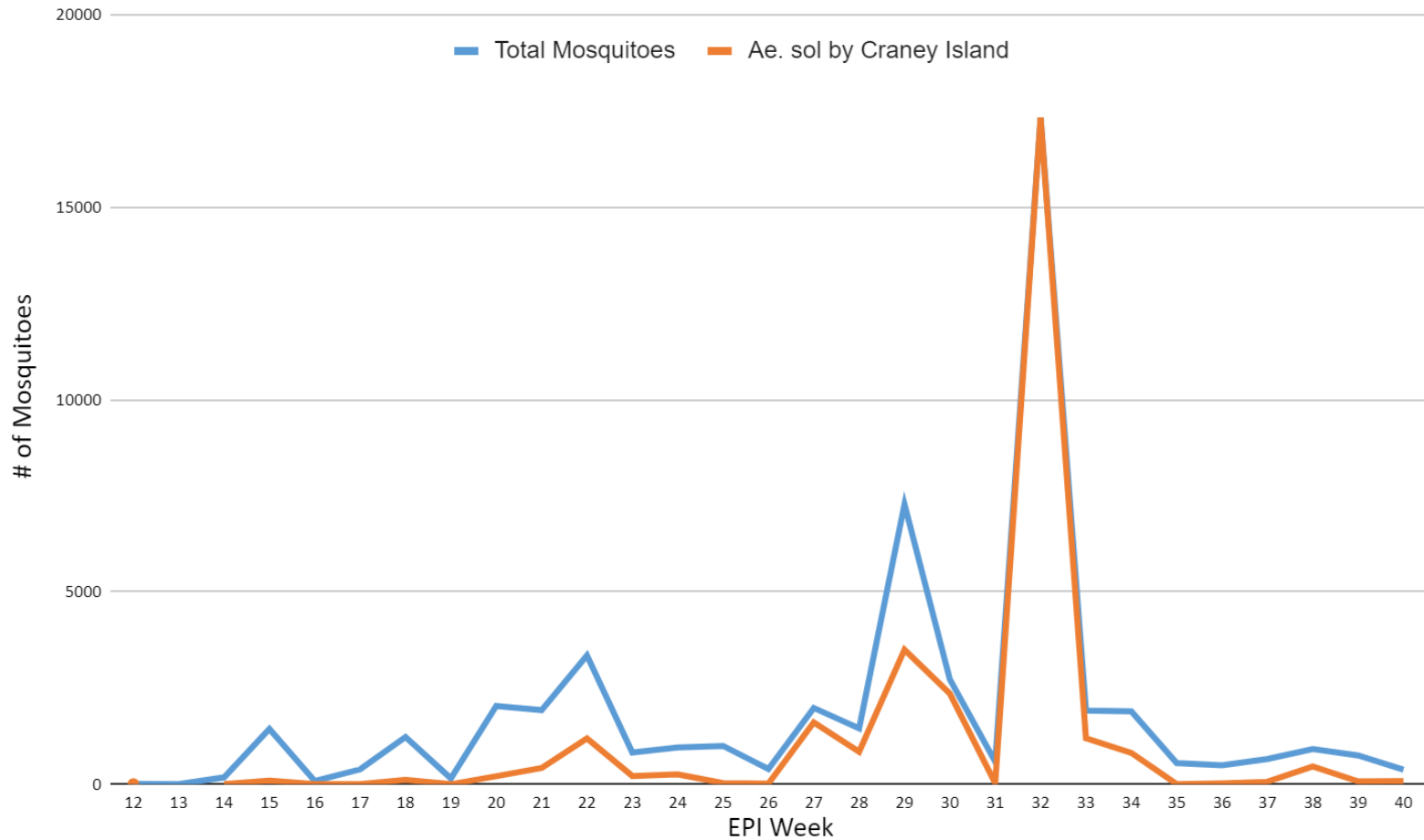
Craney Island



Ae. sol Near Craney Island Versus Total Mosquitoes



Ae. sol Near Craney Island Versus Total Mosquitoes



**From
the
Field**



References

Mosquito Control Larval Habitats. Monmouth County . (2019). Retrieved from <https://www.visitmonmouth.com/Page.aspx?Id=4689>

US Army Corps of Engineers. (2018). *Craney Island dredged Material Management Area*. US Army Corps of Engineers Norfolk District Website. Retrieved from <https://www.nao.usace.army.mil/About/Projects/Craney-Island/>

Weissmann, M. (2022). *Mosquito of the Month: Aedes sollicitans – the eastern saltmarsh mosquito*. Vector Disease Control International. Retrieved from <https://www.vdci.net/blog/mosquito-of-the-month-april-2016-aedes-sollicitans-eastern-saltmarsh-mosquito/>

