

Critical Thinking

An Essential Aspect of
Responsible AI Leadership



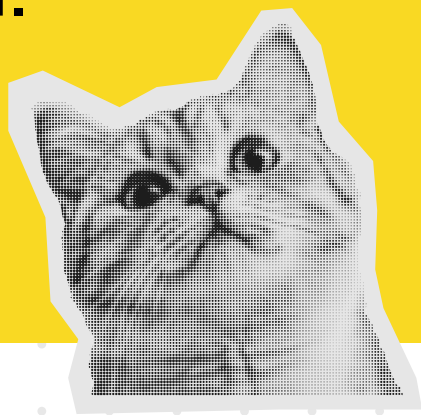
Dr. Elizabeth M. Adams
www.eadams.tech

Why Critical Thinking Matters

Critical thinking is the cornerstone of effective leadership in Responsible AI. It enables leaders to navigate complex landscapes and make decisions that align with innovation and integrity.

In the fast-paced field of AI, there is often pressure to create rapidly. Without a critical thinking attitude, hurry can cause leaders to miss significant ethical issues.

Critical thinkers make well-informed decisions that stimulate creativity and maintain fairness, responsibility, and openness. This harmony is crucial for maintaining public confidence, guaranteeing regulatory compliance, and developing an ethical culture inside the organization.



Dr. Elizabeth M. Adams
www.eadams.tech

Why Critical Thinking Matters



A leader uses critical thinking to evaluate how Responsible AI may affect operations, stakeholders, the company, the environment, and policies.



A leader uses critical thinking to help define the scope of Responsible AI, gather data to understand its impacts and consider different implementation approaches, weighing pros and cons. The leader communicates decisions transparently to stakeholders, fostering trust.

By practicing critical thinking, leaders ensure AI systems align with organizational values and societal expectations, enhancing project integrity and building stakeholder trust.



Dr. Elizabeth M. Adams
www.eadams.tech



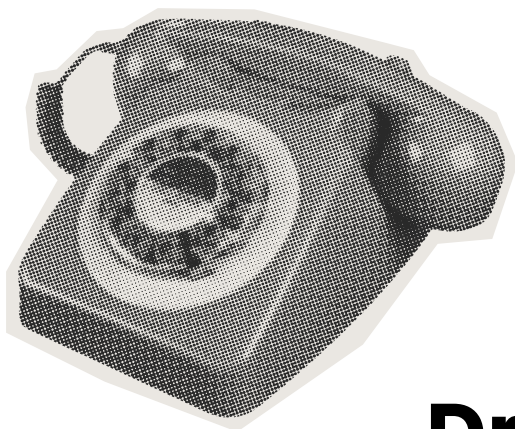
Responsible AI



Responsible AI is about creating AI systems that are fair, transparent, and accountable. It involves prioritizing ethical considerations in every stage of AI development and deployment.

For example, a company implements a framework for Responsible AI, ensuring all AI projects undergo ethical reviews and transparency audits. Ethical reviews may be superficial without critical thinking and fail to address deeper issues.

Why Critical Thinking Matters



Dr. Elizabeth M. Adams
www.eadams.tech

Informed Decision-Making



Critical thinking helps leaders discern credible sources for quality data to make informed decisions. In the context of Responsible AI, this means staying ahead of emerging challenges and ensuring that AI systems evolve in a responsible and ethical manner.

Example: A leader critically assesses the data sources for an AI model to ensure they are representative and unbiased, leading to more equitable outcomes. Without critical thinking, decisions may be based on incomplete or biased data, undermining fairness.



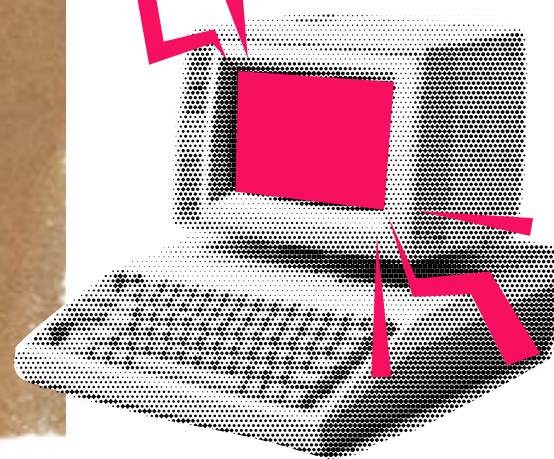
Dr. Elizabeth M. Adams
www.eadams.tech

Fostering Innovation

Critical thinking drives innovation by questioning assumptions and exploring new ideas. For Responsible AI, this means developing AI technologies that push boundaries and adhere to ethical standards and societal safety.

Example: A leader encourages their team to think critically about the ethical implications of a new AI feature, leading to the development of a more user-friendly product. Without critical thinking, innovation may overlook vital considerations, risking public trust and an adverse societal reaction.

Dr. Elizabeth M. Adams
www.eadams.tech



Effective Communication

Critical thinking helps leaders articulate their thoughts clearly, which is vital for guiding Responsible AI projects. This ensures that all stakeholders understand the rationale behind decisions.

Example: A leader clearly explains the guidelines for an AI project to their team, ensuring everyone is aligned and understands the importance of responsible innovation. Without critical thinking, communication may be unclear, leading to misunderstandings and misalignment, which can impact employee morale and project success.

Why Critical Thinking Matters



Dr. Elizabeth M. Adams
www.eadams.tech

Evaluating AI Use Cases



Why Critical Thinking Matters

Leaders can use critical thinking to assess AI use cases, ensuring they align with organizational goals and ethical standards. This approach helps in forming the right teams and processes tailored to each AI initiative.

Example: Leaders should use critical thinking to evaluate AI use cases, ensuring projects align with organizational values by assessing benefits, risks, and ethical implications. Critical thinking involves identifying necessary skills, forming cross-functional teams, and establishing transparent processes. Without critical thinking, Responsible AI projects may lack direction and fail to meet strategic objectives.



Dr. Elizabeth M. Adams
www.eadams.tech

Monitoring Responsible AI

Why Critical Thinking Matters

Responsible AI practices require practical steps such as conducting audits, ensuring diverse data sets, and maintaining stakeholder transparency. Critical thinking is vital for monitoring the output of AI systems and organizational practices.

Example: A leader implements a robust feedback loop where AI outputs are continuously evaluated against ethical guidelines and real-world outcomes. Without critical thinking, these evaluations might miss subtle issues, leading to ethical lapses and diminished public and employee stakeholder trust.



Dr. Elizabeth M. Adams
www.eadams.tech



Employee Stakeholder Participation

Why Critical Thinking Matters

Engaging employees as stakeholders in Responsible AI initiatives encourages broad participation and fosters a sense of employee ownership and accountability.

Example: A leader involves employees from various departments in developing an organizational AI ethics policy, ensuring it reflects a wide range of insights and concerns. Without critical thinking, employee participation may be limited to only technical teams, missing valuable input and reducing overall engagement.



Dr. Elizabeth M. Adams
www.eadams.tech

Adaptability

In a rapidly evolving field like AI, adaptability is key. Critical thinking allows leaders to assess new developments and pivot strategies to maintain ethical standards while embracing innovation.

Example: A leader adapts their Responsible AI strategy in response to new regulations, ensuring compliance while continuing to innovate. By applying critical thinking, leaders can navigate regulatory changes effectively, maintaining compliance and a culture of innovation.



Dr. Elizabeth M. Adams
www.eadams.tech

Bonus: Joy

Leading with joy helps expand the mind and fosters mindfulness of other perspectives, creating a culture that supports happiness and work satisfaction.

Example: A leader reflects on how joy can inspire others to embrace critical thinking. This positive approach encourages team members to engage deeply with their work, leading to more thoughtful and innovative solutions. Without joy in leadership, the workplace may lack the enthusiasm and commitment needed for meaningful progress.

Dr. Elizabeth M. Adams
www.eadams.tech

The Future of Responsible AI

Why Critical Thinking Matters

Critical thinking and Responsible AI are intertwined. By adopting critical thinking, leaders can drive innovation while ensuring ethical integrity. Embracing critical thinking practices can lead your organization toward a future where AI benefits society.



Dr. Elizabeth M. Adams
www.eadams.tech



THE WORKER & ARTIFICIAL INTELLIGENCE

THE WORKER AND ARTIFICIAL INTELLIGENCE

HUMAN EXPRESSION

A Gentle Exploration of Workers as Vital Participants

Dear elegant engineer of positive ways, our journey has included an introspection regarding the principles of responsible artificial intelligence design and development. I hope that you appreciate the beauty in engineering that prioritizes ethics and responsibility. Now I'd like to turn your attention toward the delight of worker voices. I sat with three score diligent workers, to gleam



COMING
SOON

A novel by Dr. Elizabeth M. Adams
www.theworkerandai.com