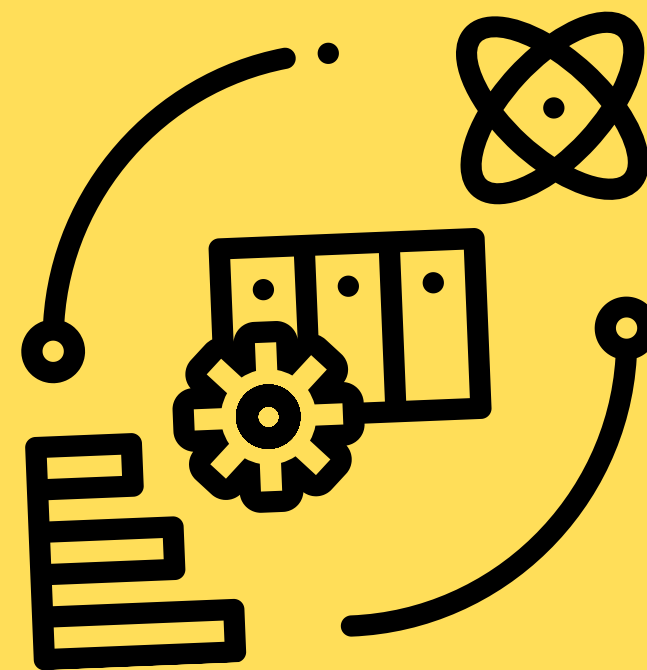


Embracing Responsible AI Across Organizational Roles

Integrating Responsible AI into Job Descriptions



Elizabeth M. Adams
Leadership of Responsible AI™
www.eadams.tech



In today's rapidly evolving technological landscape, the integration of Artificial Intelligence (AI) has become a defining feature of business operations. As we stand at the crossroads of innovation and ethical responsibility, fostering a culture that embraces Responsible AI is paramount. Beyond specific technical roles, every facet of organizations can contribute to and benefit from the ethical adoption of AI practices.

The significance of infusing Responsible AI responsibilities across a spectrum of roles ensures that our collective efforts drive innovation, transparency, and positive societal impact.

By embracing this culture, we empower each individual to contribute to the ethical evolution of AI and shape a future where AI-driven decision-making aligns seamlessly with our core values.

Elizabeth M. Adams
Leadership of Responsible AI™
www.eadams.tech



These supplemental Responsible AI job description additions are available to serve as catalysts for nurturing a culture rooted in Responsible AI practices. While the roles presented here are not exhaustive, they are designed to spark meaningful conversations and inspire action across various domains in an organization.

These suggestions aim to empower every team member to engage in the responsible integration of AI, fostering an environment where ethical considerations, transparency, and fairness are intrinsic to our technological advancements.

By embracing Responsible AI principles in practice, we collectively take a pivotal step toward shaping a future that upholds the highest standards of innovation, equity, and societal well-being.

Elizabeth M. Adams
Leadership of Responsible AI™
www.eadams.tech



Embracing Responsible AI Across Organizational Roles

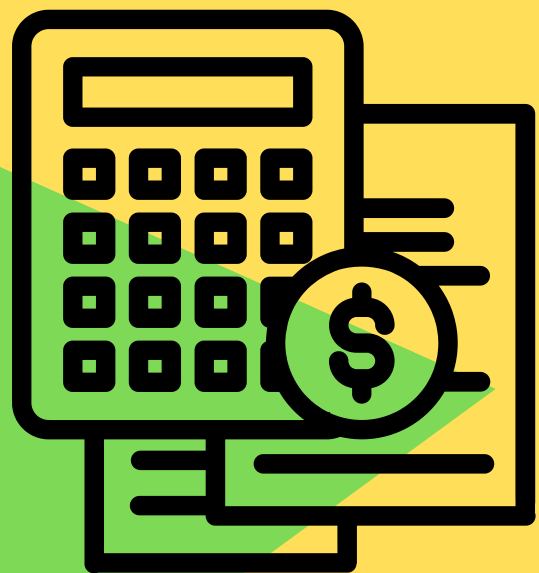
Suggested Job Description Additions

Elizabeth M. Adams
Leadership of Responsible AI™
www.eadams.tech



Accountant

In your role, you will contribute to Responsible AI by ensuring transparent and ethical financial practices related to AI initiatives. Your meticulous financial oversight will play a crucial role in upholding the integrity of our Responsible AI efforts.



Elizabeth M. Adams
Leadership of Responsible AI™
www.eadams.tech



AI Ethics Committee Chair

Leading our ethics committee, you will ensure that Responsible AI is at the forefront of our decision-making processes. You will lead the evaluation of our AI projects, assess potential ethical concerns, and provide guidance to maintain our commitment to ethical AI practices.



Elizabeth M. Adams
Leadership of Responsible AI™
www.eadams.tech



Chief Executive Officer (CEO)

As the visionary leader, you will drive the integration of Responsible AI at the core of our business strategy. Your role will involve championing a culture of ethical AI adoption, overseeing its implementation in all facets of our operations, and ensuring that our AI initiatives uphold principles of transparency, fairness, and social impact.



Elizabeth M. Adams
Leadership of Responsible AI™
www.eadams.tech



Chief Marketing Officer (CMO)

As a key influencer of our brand's message, you will ensure that our marketing strategies uphold the values of Responsible AI. You will spearhead campaigns that educate and engage our audience on the ethical use of AI, while advocating for transparency in our AI-driven decision-making processes.

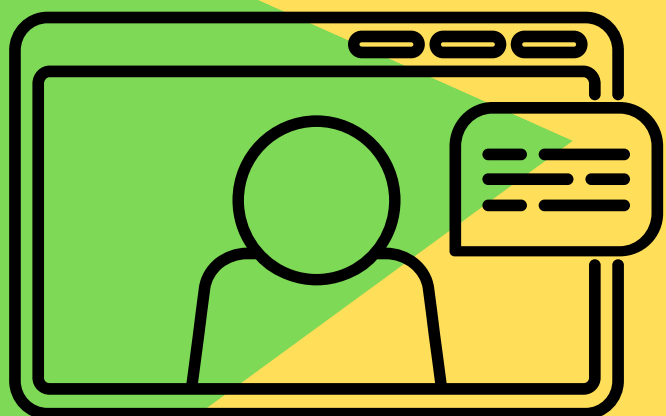


Elizabeth M. Adams
Leadership of Responsible AI™
www.eadams.tech



Chief Technology Officer (CTO)

As our technological trailblazer, you will lead the responsible development and deployment of AI solutions. Your expertise will guide the creation of AI algorithms that are unbiased, explainable, and respectful of individual privacy, while fostering collaboration across teams to promote Responsible AI practices.



Elizabeth M. Adams
Leadership of Responsible AI™
www.eadams.tech



Community Engagement Coordinator

Your focus on community relations will extend to Responsible AI initiatives. You will collaborate with local stakeholders to gather insights and ensure that AI solutions address community needs, building bridges between technology and social responsibility.



Elizabeth M. Adams
Leadership of Responsible AI™
www.eadams.tech



Corporate Social Responsibility Manager

You will develop initiatives that leverage AI for positive social impact, ensuring our Responsible AI practices extend to the betterment of communities. You will champion projects that address societal challenges and align with ethical AI principles.



Elizabeth M. Adams
Leadership of Responsible AI™
www.eadams.tech



Customer Experience Manager

As the advocate for our customers, you will lead efforts to integrate Responsible AI into our customer interactions. Your role involves ensuring that AI-driven recommendations and support align with ethical considerations, enhance customer trust, and provide meaningful, transparent experiences.



Elizabeth M. Adams
Leadership of Responsible AI™
www.eadams.tech



Customer Support Specialist

In your role, you will address customer inquiries about AI usage, advocating for transparent communication and providing guidance on the ethical implications of AI. You will ensure that users have a positive experience while using AI-powered products.

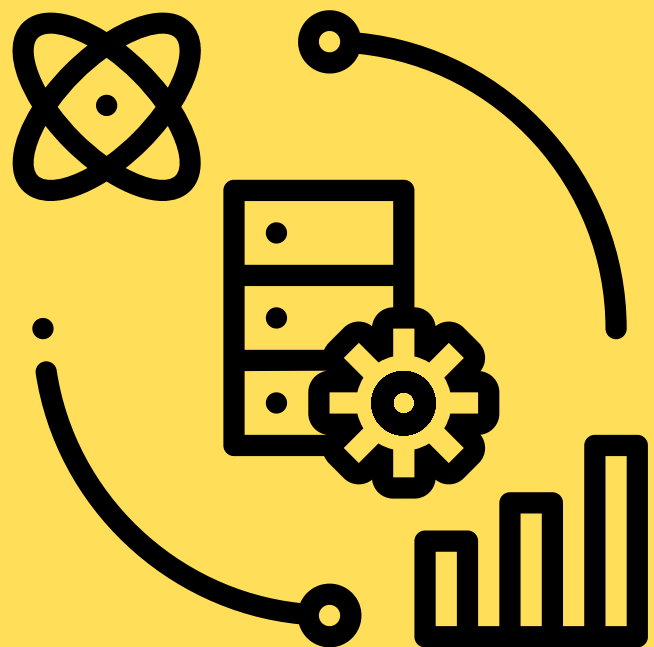


Elizabeth M. Adams
Leadership of Responsible AI™
www.eadams.tech



Data Scientist

Your expertise as a data steward will be instrumental in ensuring Responsible AI. You will develop algorithms that mitigate bias, prioritize transparency, and uphold ethical data practices, while advocating for continuous improvement in our AI models to enhance their fairness and accuracy.



Elizabeth M. Adams
Leadership of Responsible AI™
www.eadams.tech



Diversity and Inclusion Manager

Your focus on creating an inclusive workplace will extend to AI initiatives. You will advocate for diverse data representation, broader employee stakeholder participation, ensuring that AI models are trained on a wide range of voices and experiences.



Elizabeth M. Adams
Leadership of Responsible AI™
www.eadams.tech



Health and Safety Manager

Incorporating Responsible AI into workplace safety, you will ensure that AI-powered systems prioritize employee well-being and safety. You will advocate for AI technologies that prevent harm and enhance workplace security.



Elizabeth M. Adams
Leadership of Responsible AI™
www.eadams.tech



Human Resources Manager

You'll be a key figure in advocating for Responsible AI policies, emphasizing psychological safety for employees. Your proactive stance includes ensuring unbiased AI hiring and mitigating AI bias in salary recommendations. As a leader, you'll lead comprehensive AI training, boosting ethical awareness. Your commitment to inclusivity will drive diverse AI initiatives.

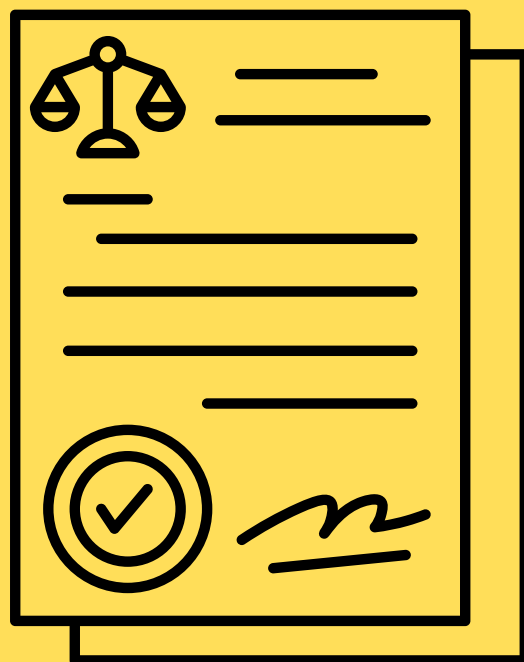


Elizabeth M. Adams
Leadership of Responsible AI™
www.eadams.tech



Legal Counsel

Guiding us through the complex legal landscape, you will ensure that our AI initiatives comply with relevant regulations and ethical standards. Your expertise will help shape AI policies, contracts, and agreements that uphold data privacy and accountability.



Elizabeth M. Adams
Leadership of Responsible AI™
www.eadams.tech



Logistics Manager

In your capacity as a logistics manager, you play a pivotal role in ensuring the responsible deployment and utilization of AI-powered technologies across our supply chain and operations. You will oversee the ethical sourcing of materials, transparent tracking of shipments, and the integration of AI systems that prioritize environmental sustainability and fair labor practices.

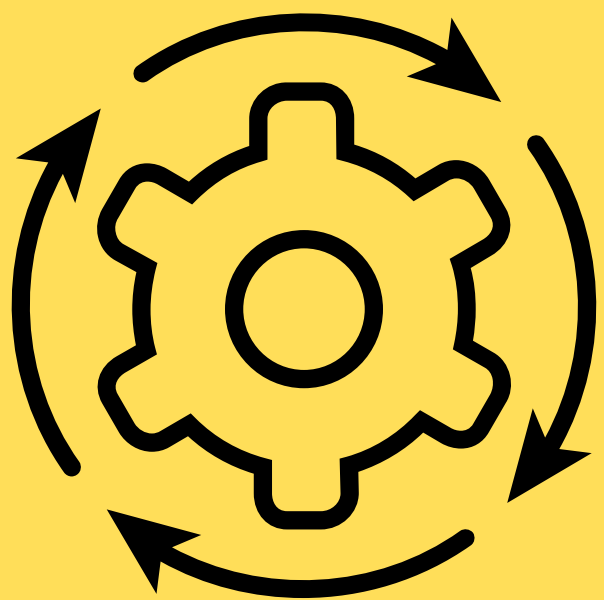


Elizabeth M. Adams
Leadership of Responsible AI™
www.eadams.tech



Operations Manager

Your role in optimizing processes will extend to Responsible AI implementation. You will ensure that AI-driven workflows are transparent, efficient, and uphold ethical standards, contributing to a culture of responsible innovation.

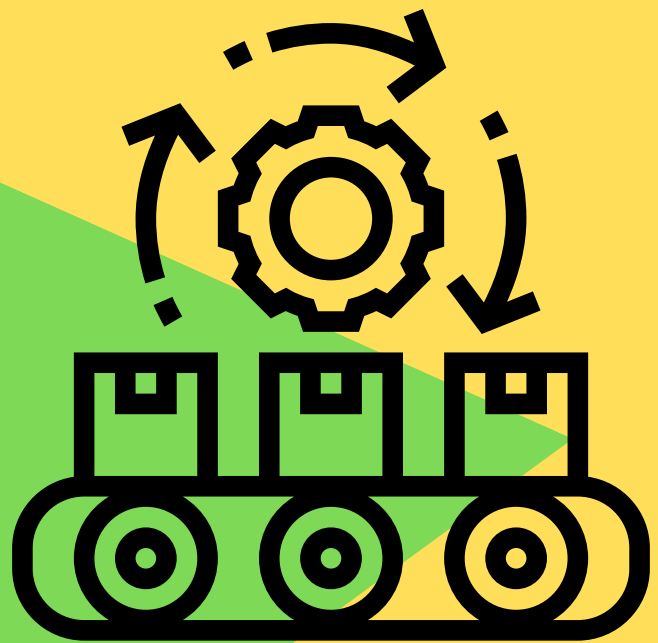


Elizabeth M. Adams
Leadership of Responsible AI™
www.eadams.tech



Product Manager

You will be responsible for ensuring that our AI products align with Responsible AI principles. You will drive the development of features that allow users to customize and control AI interactions, enhancing transparency and addressing potential biases.

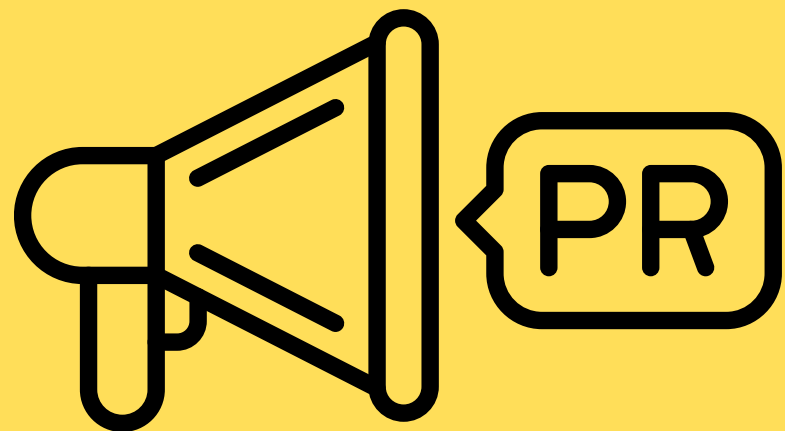


Elizabeth M. Adams
Leadership of Responsible AI™
www.eadams.tech



Public Relations Specialist

Crafting meaningful and authentic narratives that highlight our commitment to Responsible AI, you will communicate our ethical AI practices to the public. You will showcase our efforts in creating technology that benefits society while prioritizing transparency and accountability.



Elizabeth M. Adams
Leadership of Responsible AI™
www.eadams.tech



Quality Assurance Specialist

Your meticulous attention to detail will be essential in upholding Responsible AI practices. You will develop rigorous testing protocols to identify biases, inconsistencies, and potential risks in AI models and algorithms, contributing to the creation of AI systems that are fair, reliable, and ethical.

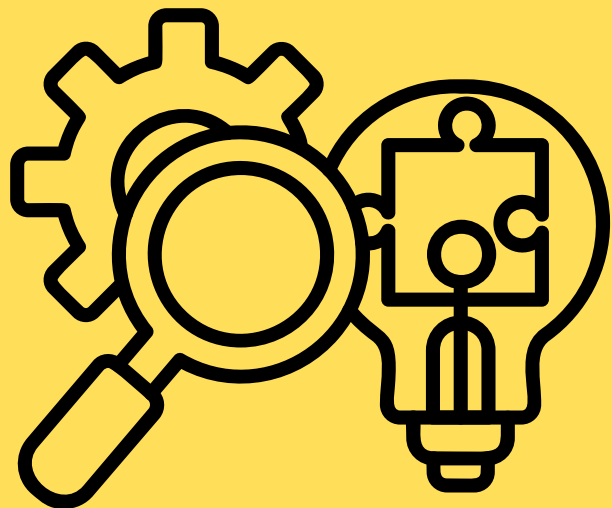


Elizabeth M. Adams
Leadership of Responsible AI™
www.eadams.tech



Research and Development Director

In your strategic leadership role, you will guide the research and development of AI technologies that prioritize ethical considerations. You will drive innovation while ensuring that our AI initiatives adhere to Responsible AI principles, fostering a culture of continuous improvement through responsible inquiry.

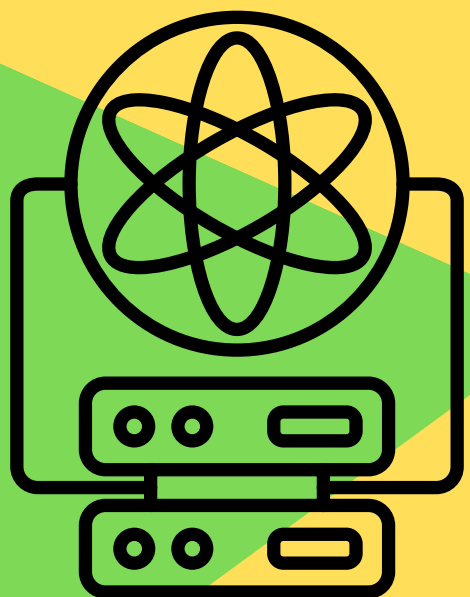


Elizabeth M. Adams
Leadership of Responsible AI™
www.eadams.tech



Research Scientist

Your contributions to Responsible Innovation and Research will be instrumental in developing cutting-edge solutions. You will contribute to the continuous discovery of methods to detect and mitigate bias in AI models, contributing to the creation of more equitable and inclusive technologies.



Elizabeth M. Adams
Leadership of Responsible AI™
www.eadams.tech



Sales Representative

You will educate clients on the ethical considerations of our AI solutions, showcasing how they align with Responsible AI principles. Your expertise will foster trust and transparency, guiding clients to make informed decisions.

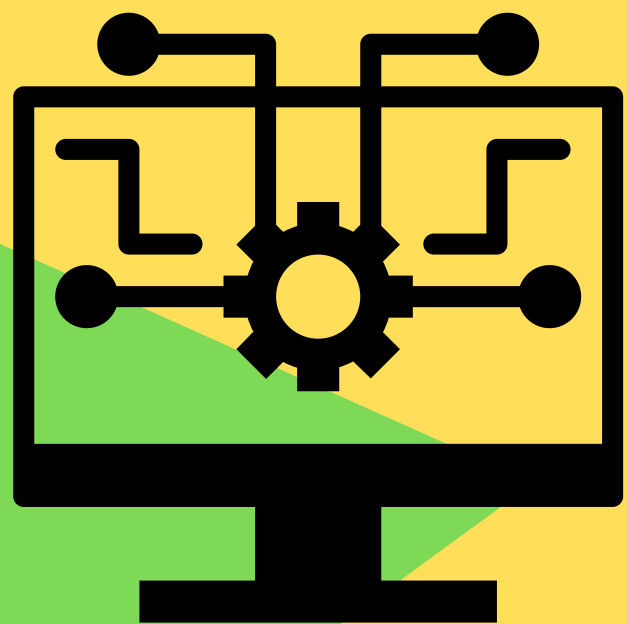


Elizabeth M. Adams
Leadership of Responsible AI™
www.eadams.tech



Software Engineer

As a creator of AI applications, you will write code that adheres to Responsible AI guidelines. You will validate the ethical integrity of your work, ensuring that our software solutions prioritize human values and adhere to the highest standards of security and privacy.



Elizabeth M. Adams
Leadership of Responsible AI™
www.eadams.tech



Sustainability Officer

Your focus on environmental and social impact will extend to Responsible AI initiatives. You will assess the carbon footprint of AI systems, promote sustainable AI practices, and ensure that AI contributes to a more sustainable future.



Elizabeth M. Adams
Leadership of Responsible AI™
www.eadams.tech



Training and Development Specialist

Your role in upskilling employees will encompass Responsible AI education. You will design training programs that empower our workforce to understand and implement ethical AI practices, fostering a culture of responsible innovation.

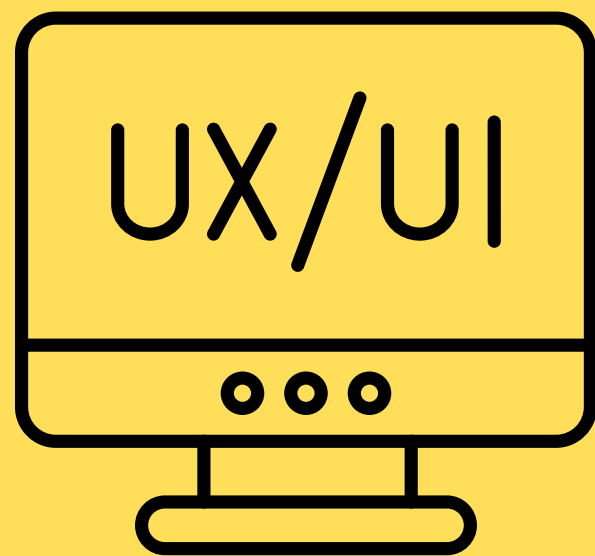


Elizabeth M. Adams
Leadership of Responsible AI™
www.eadams.tech



UX/UI Designer

Your role involves crafting user experiences that prioritize transparency, explainability, and user control in AI-driven interfaces. You will advocate for intuitive and inclusive designs that empower users to make informed decisions and understand how AI impacts their interactions.



Elizabeth M. Adams
Leadership of Responsible AI™
www.eadams.tech



The Responsible AI Integration Specialist

Elizabeth M. Adams
Leadership of Responsible AI™
www.eadams.tech



Responsible AI Integration Specialist

The Responsible AI Integration Specialist is a dynamic role aimed at harmonizing the principles of Responsible AI across diverse job descriptions within an organization.

This temporary yet pivotal position bridges AI ethics and various roles, ensuring that Responsible AI dimensions can be seamlessly embedded into each job description.

Collaborating closely with organizational leaders, the Responsible AI Integration Specialist will assess and strategize how to incorporate Responsible AI practices into existing roles.

Elizabeth M. Adams
Leadership of Responsible AI™
www.eadams.tech



Responsible AI Integration Specialist

Key Responsibilities:

1. **Assessment and Analysis:** Conduct comprehensive evaluations of existing job descriptions to identify opportunities for integrating Responsible AI considerations.
2. **Collaboration and Communication:** Collaborate with department leaders to develop tailored, Responsible AI language for each job description.
3. **Customization:** Tailor Responsible AI language to the unique context of each role, ensuring relevance and alignment with organizational goals.
4. **Ethical AI Advocacy:** Champion the importance of Responsible AI integration across departments, fostering a deeper understanding of its significance.
5. **Training and Education:** Provide guidance & training on effectively communicating and implementing Responsible AI components in job descriptions.

Elizabeth M. Adams
Leadership of Responsible AI™
www.eadams.tech



Responsible AI Integration Specialist

Outcomes:

The Responsible AI Integration Specialist will play a pivotal role in fostering a culture where Responsible AI is not just a supplement but an integral part of every role.

This integration will lead to heightened awareness, improved ethical decision-making, and the cultivation of a workforce equipped with adaptable skills for an AI-driven future.

Through their efforts, the organization will not only enhance its AI practices but also set a gold standard for ethical and responsible use of AI across industries.

Elizabeth M. Adams
Leadership of Responsible AI™
www.eadams.tech



13 additional "Leadership Guides" can be found at www.eadams.tech

LEADERSHIP OF RESPONSIBLE AI Organizational Learning & Development

1 Considerations

When considering organizational learning in the era of AI, Responsible AI (RAI) leaders will need to give significant priority to employee stakeholder participation in the innovation process. In a study to address algorithms related to determining customer loans, only a few managers and employees were aware of the underlying algorithms, their existence, or the details of how they worked (Mayer et al., 2020).

2 In Practice


This left the organization unprepared to answer basic customer questions about their automated algorithmic decision-making tools. Mayer et al. (2020) help us understand the benefits and drawbacks of implementing AI in the workplace and the effects on employees left out of the innovation process. They emphasize several advantages, such as greater competitiveness and profitability.

3 Responsible AI Considerations

However, the negative consequences are also notable, specifically related to the lack of employee stakeholder involvement in RAI development. Employees no longer contributed to knowledge production for the organization, were unprepared to answer questions about AI decision-making outcomes, lost critical thinking skills, lost expertise, and feared that their skillset would soon be obsolete by the organization (Mayer et al., 2020).

This example foreshadows the importance of employee stakeholder participation in RAI. Many of the obstacles are technological in nature, such as creating effective solutions for human involvement; overcoming concerns of employee trust, safety, and security; and ensuring that bad repercussions be avoided at all costs (Berente et al., 2021).

Elizabeth M. Adams
Leadership of Responsible AI™



Fairness in AI Conversation Starter

1 What is it?

Fairness in AI refers to the ethical principle of ensuring unbiased and equitable treatment of individuals and groups when designing, developing, and deploying artificial intelligence systems.

2 Its Importance

In the era of Responsible Artificial Intelligence (AI), fairness is a crucial aspect that leaders and employees need to address. Ensuring fairness in AI systems not only promotes ethical practices but also fosters inclusivity and equal opportunities for all.

3 5 Questions to Ask

How does our organization define fairness in the context of AI systems?


What steps are we taking to identify and mitigate bias in our AI algorithms?

How do we actively engage diverse stakeholders in the design and development of our AI systems to ensure a fair representation of perspectives?

How do we assess and address potential unintended consequences and discriminatory outcomes of our AI systems?

What measures are in place to promote transparency and accountability in the use of AI technologies to avoid unfair practices?

Elizabeth M. Adams
Leadership of Responsible AI™
eadams.tech



Algorithmic Accuracy in AI Conversation Starter

1 What is it?

Algorithmic Accuracy refers to the degree to which an algorithm or AI model produces correct and reliable outcomes, predictions, or recommendations. It signifies the alignment between the algorithm's outputs and the true values or desired outcomes.

2 Its Importance

Algorithmic Accuracy safeguards against biased or discriminatory decisions that could harm individuals or perpetuate inequalities.

Algorithmic Accuracy enhances the trustworthiness and reliability of AI systems, fostering confidence and acceptance.

Algorithmic Accuracy contributes to fair and ethical practices, promoting transparency and accountability in decision-making processes.

3 5 Questions to Ask

How have we examined the quality and representativeness of the data used to train our AI model?


What mechanisms are in place to regularly monitor and assess the performance and accuracy of our AI system?

How do we identify and rectify any discrepancies or errors?

How do we address any potential disparities across different demographic groups?

How do we demonstrate that we continuously update and refine our AI models based on new data and evolving requirements?

Elizabeth M. Adams
Leadership of Responsible AI™
eadams.tech



RESPONSIBLE LEADERSHIP In a stakeholder society

1 What is it?

A social-relational and ethical phenomenon that develops via social interaction. Responsible leadership grows through participation with a diverse spectrum of followers as stakeholders both within and outside the organization (Maak and Pless, 2006).

2 In Practice

By adopting a Responsible Leader mindset, leaders can begin to match powerful capabilities delivered by Responsible Artificial Intelligence (RAI) with designing technology that makes employee stakeholders feel empowered. Leaders should help employees comprehend how technology may affect them and others, trust it, and feel in control of it (Abdul et al., 2018).

3 Responsible AI Considerations

Leaders should include diverse employee stakeholders concerned about the future of work and impacts on AI in society in RAI discussions to reduce obstacles to AI adoption and trust (Agerfalk et al., 2021).

Leaders should engage diverse employee stakeholders in creating RAI organizational recommendations that include strategies for servicing customers & clients impacted by AI (Mayer et al., 2020).

Leaders should engage diverse employee stakeholders in creating RAI "shaping artifacts" to advance factors concerned with a "good AI society" such as security, justice, equality, inclusion, and environmental challenges (Wamba et al., 2021).

Elizabeth M. Adams
Leadership of Responsible AI™



Accountability in AI Conversation Starter

1 What is it?

Accountability in AI refers to the shared responsibility and answerability of leaders, employees, and organizations for their actions, decisions, and outcomes related to the development, deployment, and use of AI technologies.

2 Its Importance

Accountability in AI establishes trust. It ensures that AI-related choices are made with a clear understanding of the potential impact on individuals and society, promoting responsible and ethical behavior.

Accountability in AI is also critical for legal and regulatory compliance. By adhering to relevant laws, regulations, and industry standards, organizations can avoid legal risks, reputational damage, and penalties associated with non-compliance. **Accountability in AI** drives continuous improvement by encouraging organizations to learn from mistakes and refine AI practices.

3 5 Questions to Ask

Who is responsible for ensuring ethical AI practices within our organization, and how are we held accountable for our actions and decisions?


How is our organization promoting a culture of Accountability in AI?

How do we measure the effectiveness of our accountability practices?

What training programs are in place to help demonstrate what Accountability in AI looks like?

Who is accountable for monitoring and evaluating the performance and impact of our AI systems?

Elizabeth M. Adams
Leadership of Responsible AI™
eadams.tech



Elizabeth M. Adams
Leadership of Responsible AI™
www.eadams.tech

