

LEADERSHIP OF RESPONSIBLE AI:
COMPREHENSIVE LITERATURE REVIEW

RESPONSIBLE RESEARCH & INNOVATION



Elizabeth M. Adams

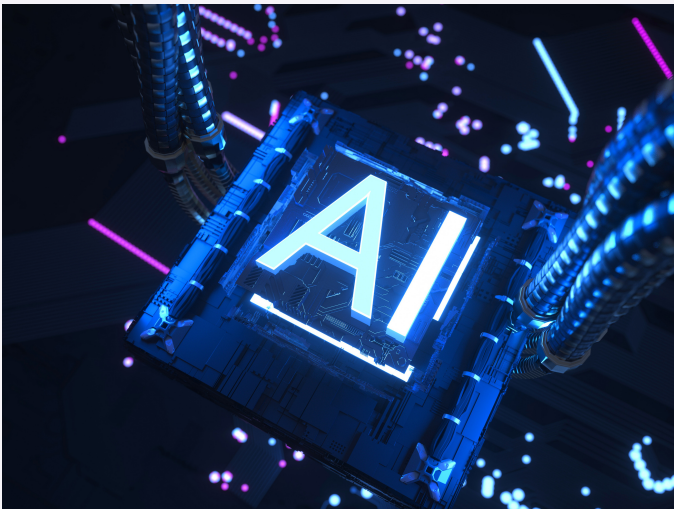


LEADERSHIP OF RESPONSIBLE AI: COMPREHENSIVE LITERATURE REVIEW

Responsible Research & Innovation

Intro

In the age of AI, researchers and industry leaders require a more comprehensive, modern vision and perspective of AI as it applies to people and machine learning (ML) interaction.



When applying ML models in ways that may influence outcomes of socioeconomic importance, organizations need to ensure that the resulting AI systems are enacted fairly and do not discriminate (Teodorescu et al., 2021).

Responsible Research & Innovation (RRI) guides us to understanding that human to ML augmentation is complex.

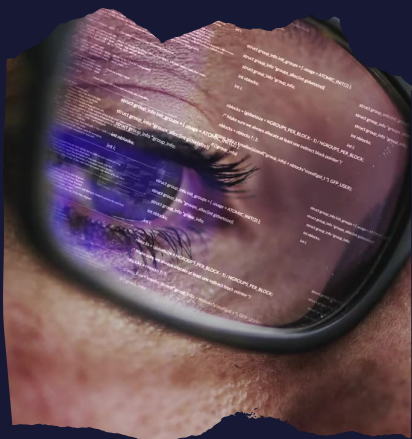
LEADERSHIP OF RESPONSIBLE AI:

Intro CONTINUED

As we progress further into the fourth industrial revolution, a broader approach to responsible research in Information Systems (IS) and innovation might be addressed and achieved at different levels inside an organization.

According to Agerfalk et al. (2021), AI discussions within IS should concentrate on reducing obstacles to AI adoption within businesses. Per Teodorescu et al. (2021), these include discussing the future of work in the face of AI automation, algorithmic bias, and automated decision-making.

Following agreed-upon societal standards and algorithmic fairness is a crucial issue in AI (Teodorescu et al., 2021).



LEADERSHIP OF RESPONSIBLE AI: RESPONSIBLE RESEARCH & INNOVATION

Intro CONTINUED

McCarthy et al. (2020) provide the most comprehensive study to date based on extant literature as it focuses uniquely on IS development and **stakeholder participation**.

Due to their proximity to social considerations, **employee stakeholders** who have been harmed by AI bias may contribute a distinctive experience to the Responsible Innovation field.

McCarthy et al. (2020) highlight three focal aspects up for scholarly debate for Responsible Research and Innovation (RRI).



LEADERSHIP OF RESPONSIBLE AI: RESPONSIBLE RESEARCH & INNOVATION

SCIENCE'S RELATIONSHIP WITH SOCIETY

and its response to society

RRI aims to integrate and incorporate methods such as anticipation, reflection, and inclusive debate among key stakeholders into the innovation process (Owen, Macnaghten, & Stilgoe, 2012).



1

LEADERSHIP OF RESPONSIBLE AI: RESPONSIBLE RESEARCH & INNOVATION

SCIENCE FOR SOCIETY *and its consequences*

RRI advocates for ethical, inclusive, democratic, and equitable creative science. Its primary goal is to identify and realize new areas of public benefit for research and innovation (Wilsdon, Wynne, & Stilgoe, 2005).



2

McCarthy et al. (2020)

LEADERSHIP OF RESPONSIBLE AI: RESPONSIBLE RESEARCH & INNOVATION

REFRAMING RESPONSIBLE RESEARCH

In order to assure responsibility, RRI focuses on analyzing possible repercussions and hazards linked with developing technology (Stahl, 2012).

RRI focuses on maintaining contact with policymakers at both the national and international levels when reacting to major problems (Owen et al., 2012).

ethical dilemma

/eth-eh-kuhl dih-lem-uh/

3

LEADERSHIP OF RESPONSIBLE AI: COMPREHENSIVE LITERATURE REVIEW



Elizabeth M. Adams
www.eadams.tech

**DID YOU FIND THIS
HELPFUL?**

If you found this helpful or
informative, don't forget to like,
comment, share, and save it.

