



# WHY WI-FI 6 MATTERS FOR YOUR BUSINESS ROUTER

## WHY UPGRADE TO WI-FI 6?

Wi-Fi 6 delivers lightning-fast speeds, seamless device connectivity, and superior security, ensuring your business stays ahead of the curve.

### SPEED



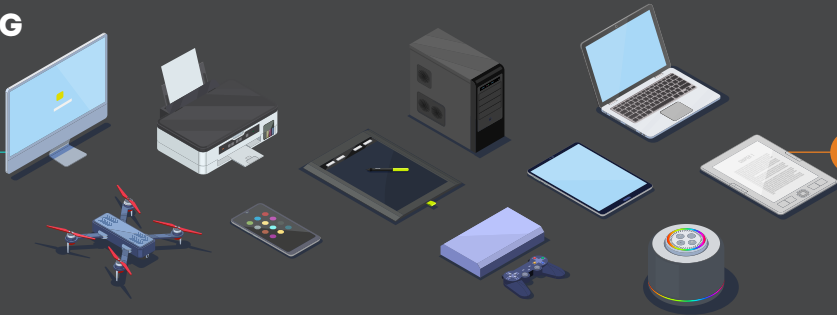
Up to  
**40%**

faster than Wi-Fi 5, ideal for modern needs.

### DEVICE HANDLING

#### WI-FI 6

Handles dozens of devices seamlessly.



#### WI-FI 5

Struggles with multiple connections.



5

### LATENCY

#### WI-FI 6

Lower latency for smoother video calls, gaming, and live applications.

6

#### WI-FI 5

Higher latency, causing delays in real-time applications.

### INTERFERENCE MANAGEMENT

#### WI-FI 6

BSS Coloring reduces interference for better performance.



#### WI-FI 5

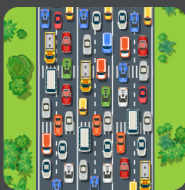
Struggles in environments with overlapping networks.

### CHANNEL UTILIZATION



#### WI-FI 6

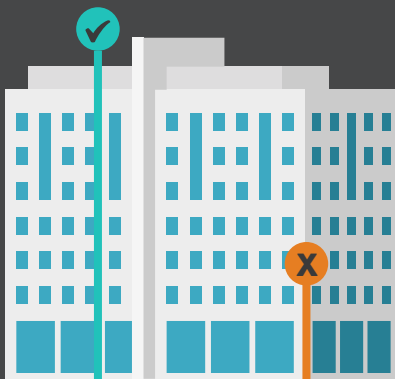
Utilizes wider 160 MHz channels, reducing congestion and boosting speed.



#### WI-FI 5

Limited to fewer channels, prone to congestion.

### RANGE & COVERAGE



#### WI-FI 6

Extended range, better multi-floor coverage.

#### WI-FI 5

Moderate range, struggles with obstacles.

### PRODUCTIVITY

#### WI-FI 6

OFDMA & MU-MIMO optimize performance.

#### WI-FI 5

Limited bandwidth allocation.



### FUTURE-READINESS

#### WI-FI 6

Built for tomorrow's connectivity challenges.

#### WI-FI 5

Outdated for new tech demands.



### SECURITY

#### WI-FI 6

WPA3 encryption, advanced protection.

#### WI-FI 5

WPA2 encryption, basic protection.



## GET THE RIGHT DEVICE TO UNLOCK WI-FI 6

Pairing Wi-Fi 6 with the right hardware is essential. Devices like the m212 or m519 routers are built to harness the full power of Wi-Fi 6, offering reliable connectivity, advanced features, and the flexibility to meet your business needs. These routers ensure your business stays connected, even during power outages or in remote areas