

## THE DEBRIS IN THE HOUSE THAT APPEAR IDENTICAL TO THOSE WHICH SEEM TO BE INVOLVED IN MY DERMATOLOGICAL SYMPTOMS

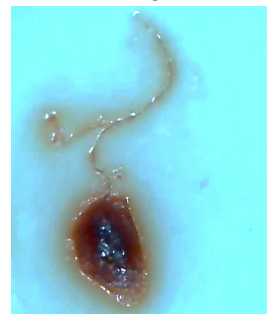
- most pictures are stored [here](#) but each example below also has a link to more pictures from that category)
- Unfortunately, pics are mostly magnified at unknown power-- its a cheap magnifying camera-- but I tried to include some pics that provide scale in the pictures in the google folders

### THIN WHITE (AND BLACK/BROWN FILAMENTS)

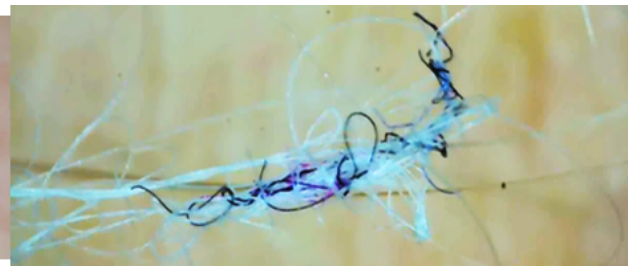
1. These are the white stringy filaments (and sometimes black and brown filaments) that are now ubiquitous -- they are coming off of and out of my skin and are EVERYWHERE in the house (I have taken magnified photos and video to show that they are indeed coming from under my skin and are not external debris-- some of the pics are available [here](#), as I totally recognize it's hard to believe!)



These filaments look totally benign to the naked eye (often like dust bunnies/spider webs/hair/lint), but a closer look reveals branching (in both those on surfaces and in my skin) as well as what looks (to my untrained eye) as other characteristics of fungi/slime mold (don't worry, I know slime mold isn't fungi):



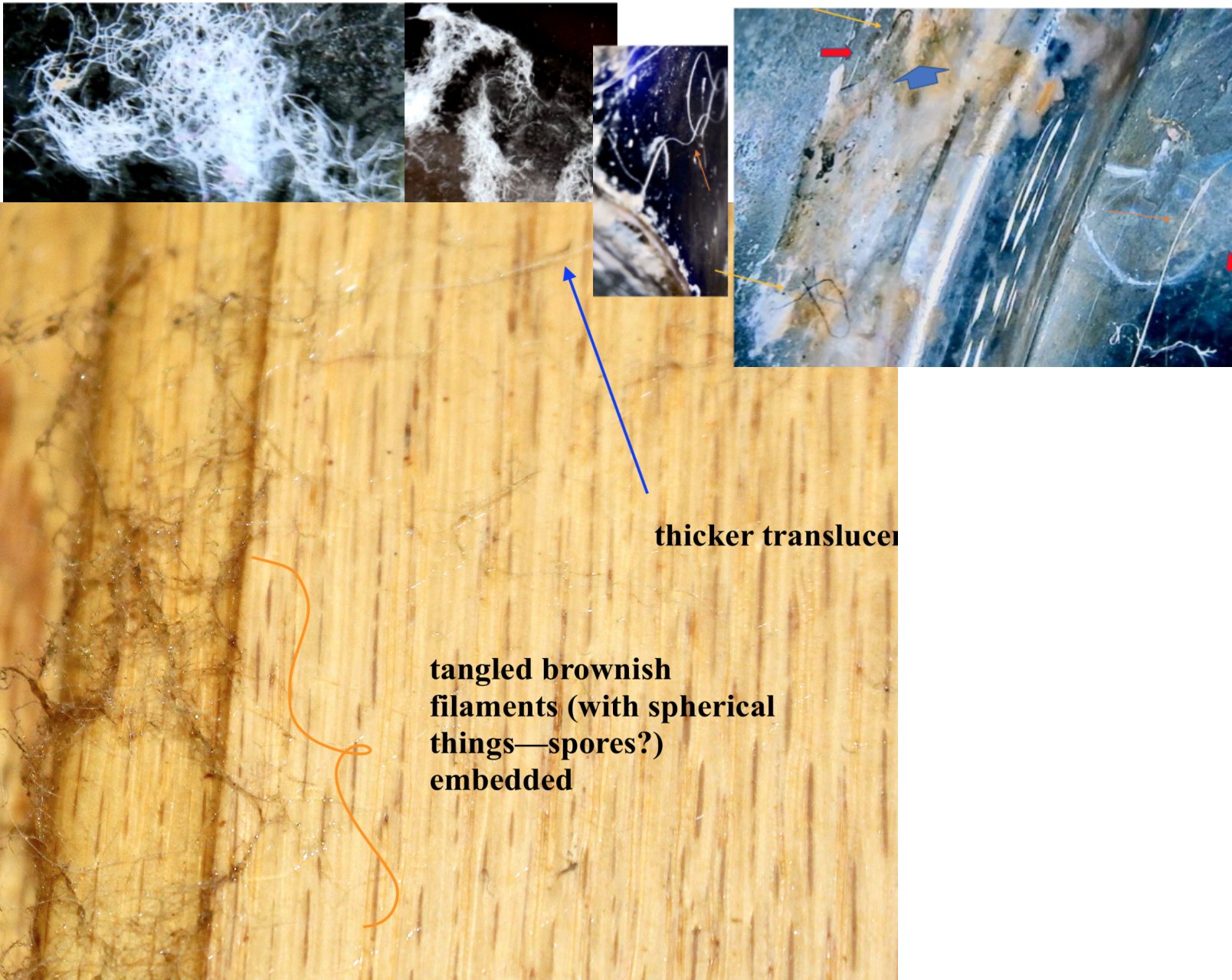
They are now all over my skin and hair. Here you can see them in knots of hair (which is typically brown) that I removed from my comb (magnified) (left); Below--magnified (around ~500-100x)-- sometimes have gelatinous material around them as on left, sometimes wrapped up with other filaments, particularly blue ones)





Laundry machine (inside washing machine, and all around that area) and The kitchen cabinets

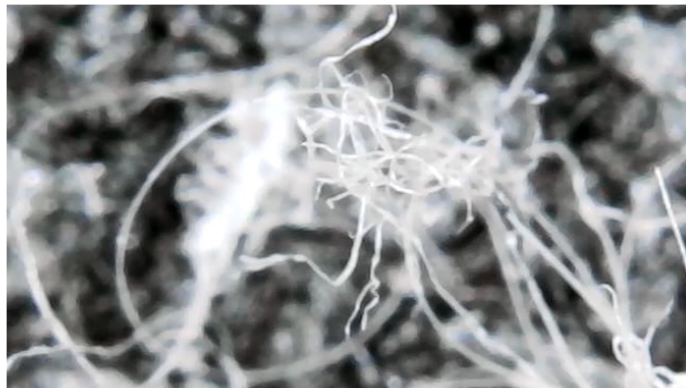
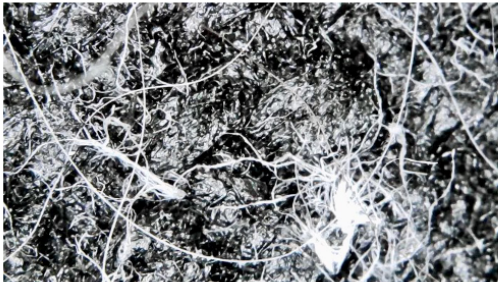
On the inside door of the washing machine and wood cabinets; In many instances, there are also thicker translucent string-things (orange arrows), yellow & whiteish/translucent slime, thin black filaments (yellow) thicker black & white structures (blue), etc





Furniture White stringy filaments on furniture (with magnification, can see yellow specks and black flat/ribbon-like filaments):

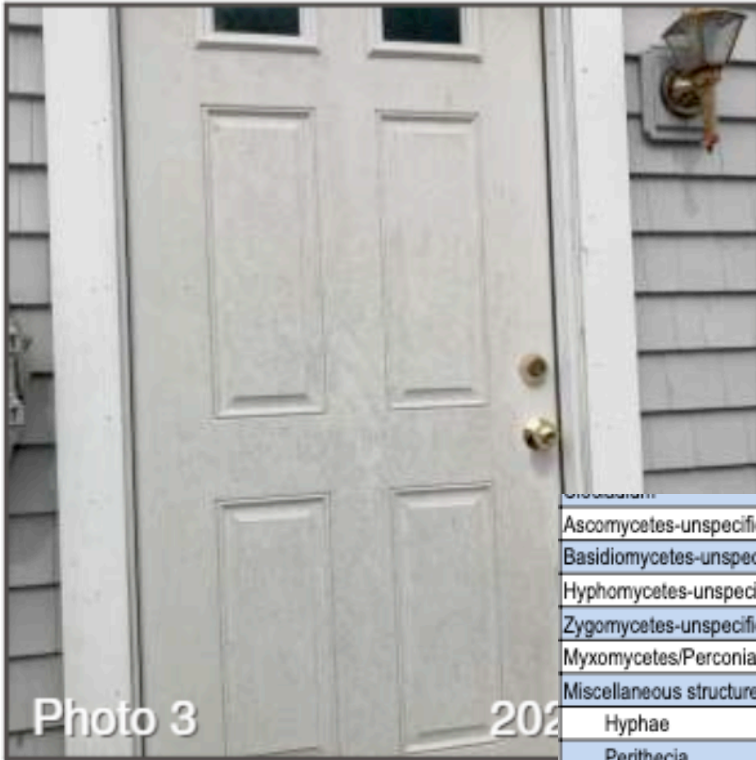
White stringy filaments on furniture (with magnification, can see yellow specks and black flat/ribbon-like filaments): :



Below on right: contrast adjusted to see contours (original image on left)



On side door (swab test indicated it is  
 --whitish 'fluffy' filamentous growths with some blue-grey 'dots' (colonies??)



Ascomycetes-unspecified	ND
Basidiomycetes-unspecified	ND
Hyphomycetes-unspecified	High
Zygomycetes-unspecified	ND
Myxomycetes/Perconia/Smuts/Rusts	ND
Miscellaneous structures	
Hyphae	Present
Perithecia	ND
Background Particulate Density	High

