



ellenex solutions for smart cities and local governments

Low Power, Integratable, Composable, Application Centric

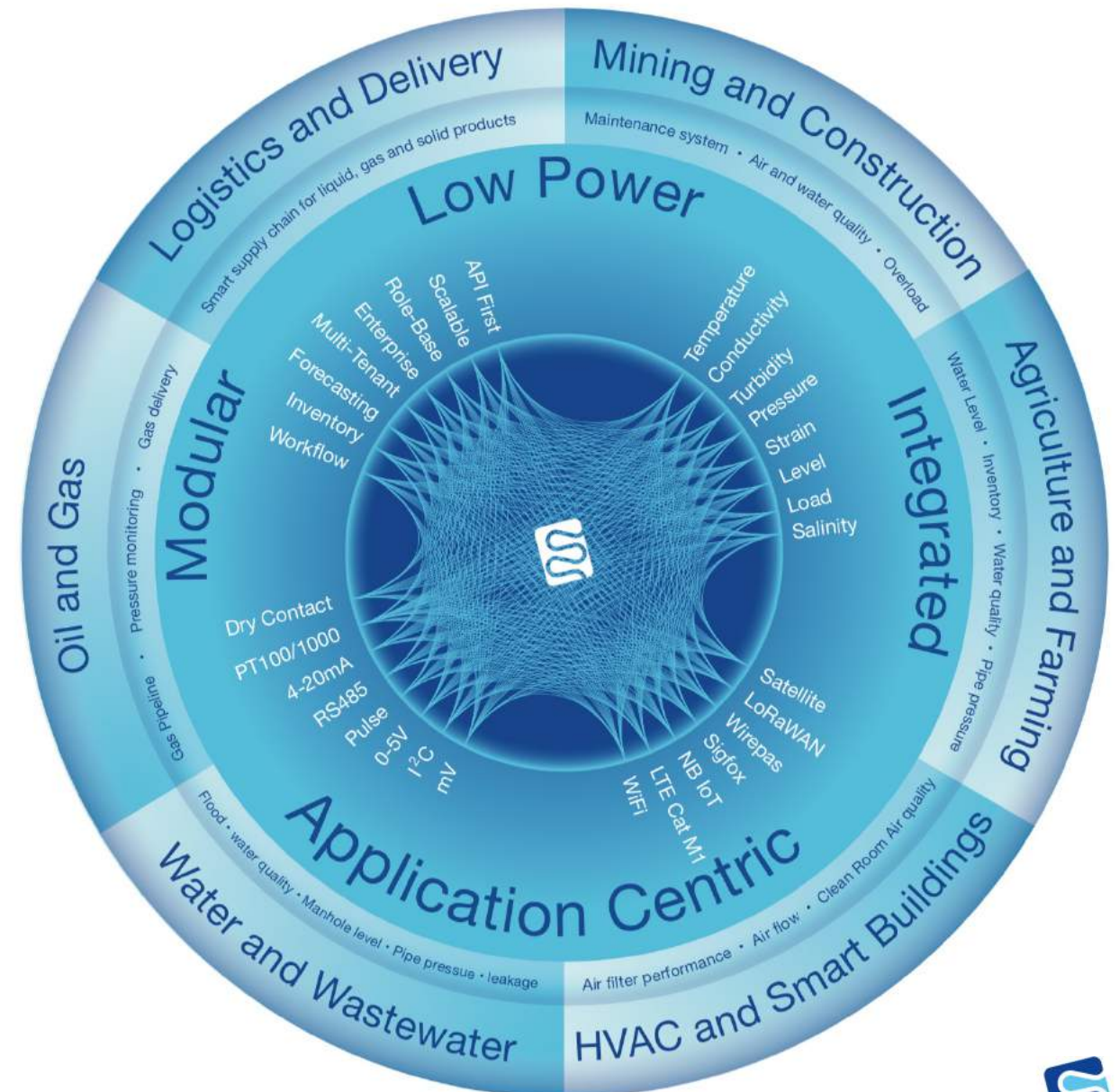


ellenex

Industrial low power IoT

At ellenex, we believe industrial IoT solutions need to be **modular**, **integratable** and **application centric** to make them scalable and profitable for customers. ellenex IoT framework designed to address these needs.

- Simplified
- Reliable IoT solutions
- Designed to reduce your operational costs



We

Cover all your industrial IoT needs



Manufacture industrial sensors

Pressure, Level, Temperature, Differential Pressure,
Load, Strain, Water Quality, Air Quality

Design low power interfaces

NB IoT, LTE Cat M1, LoRaWAN, Low Power Satellite,
Sigfox, Wirepas, Low Power WiFi

Integrate microservice platform

Designed for enterprise, Role-based, API-first,
Integratable, Multi-tenant, Dynamic alerting

Our global support

We are offering professional support to our partners and customers in more than 50 countries. Our technical and sales channels provide exceptional support to be sure our customers are getting the ultimate benefit from our solutions and technologies.





ellenex solutions for

Smart cities and councils



ellenex

Our added value

We offer solutions for better asset management in parks and public facilities



safety and event prediction



predictive maintenance



supply management



workflow management



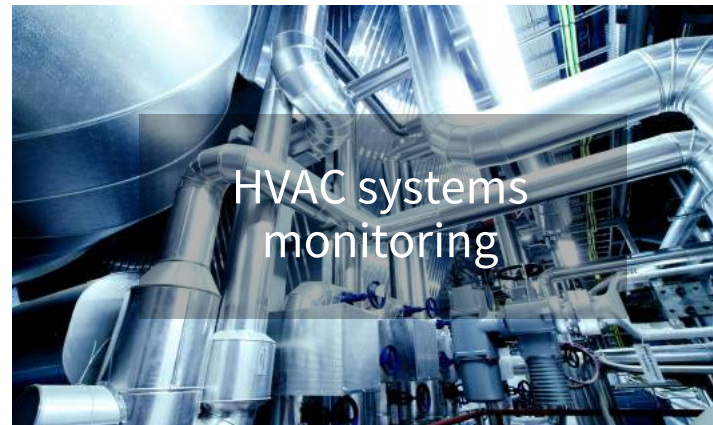
asset management



service management

Our focused applications

end to end, application centric and integratable





water supply management

pressure and flow monitoring in water pipelines provides more accurate analysis, prediction of need and prevention of leakage and pipeline breakdown.

- water storage monitoring in parks
- water usage in public facilities
- water leakage
- pumps performance monitoring
- water supply to events (public toilets)



surface water monitoring

- flood monitoring
- borehole monitoring
- stormwater pit monitoring
- Pumps and water supply
- sewage overflow monitoring
- pressurised waste water systems



water quality and waste management

- parks and aqua-centres
- waste oil delivery
- pressurised wastewater systems
- borehole level monitoring
- released industrial water in the environment monitoring
- water temperature monitoring

ellenex offers state of the art solutions for overload and structural health monitoring on bridges, heritage buildings, public buildings and governmental buildings

- strain on buildings structure
- land movement monitoring
- pavement and road over load
- tension monitoring on highway guard cables
- moisture and water leakage monitoring

structural health monitoring



service and delivery automation

- diesel delivery
- oil delivery
- gas delivery
- on board mass



HVAC and air supply

A high-angle photograph of a large-scale HVAC system installed on a rooftop. The system consists of several rows of outdoor units, each featuring multiple circular fans. A complex network of large, insulated ducts runs across the roof, connecting the units and distributing air. The equipment is mounted on metal frames, and the overall setup is organized in a systematic, grid-like fashion.

- airflow monitoring
- filtration system performance monitoring
- temperature monitoring
- negative pressure air quality

safety systems monitoring

- fire system
water
pressure
monitoring
- water
hydrants
pressure
monitoring
- remote water
tank level
monitoring





ellenex
products

Our key products for water industry



PTS2

pipeline
pressure and
tank level
monitoring



PLS2

precision level
monitoring



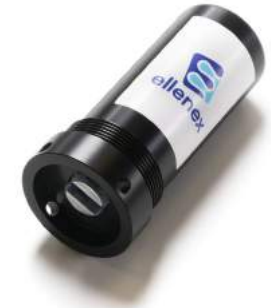
CSD2

conductivity
and salinity



TTS2

water
temperature
monitoring



CST2

water turbidity
checking

pressures measurement

- leak detection
- pump performance
- hydraulic systems
- liquid tanks level monitoring
- water valves performance monitoring



level measurement

- water resources
- water supply tank
- sewage tanks
- chemical dosing systems
- diesel supply
- overflow monitoring
- flood monitoring
- manhole level monitoring



water quality

- conductivity
- salinity
- temperature
- turbidity
- pH
- dissolved oxygen



ellenex electronic interfaces

I2C

mV

mV/V

Pulse

RS485

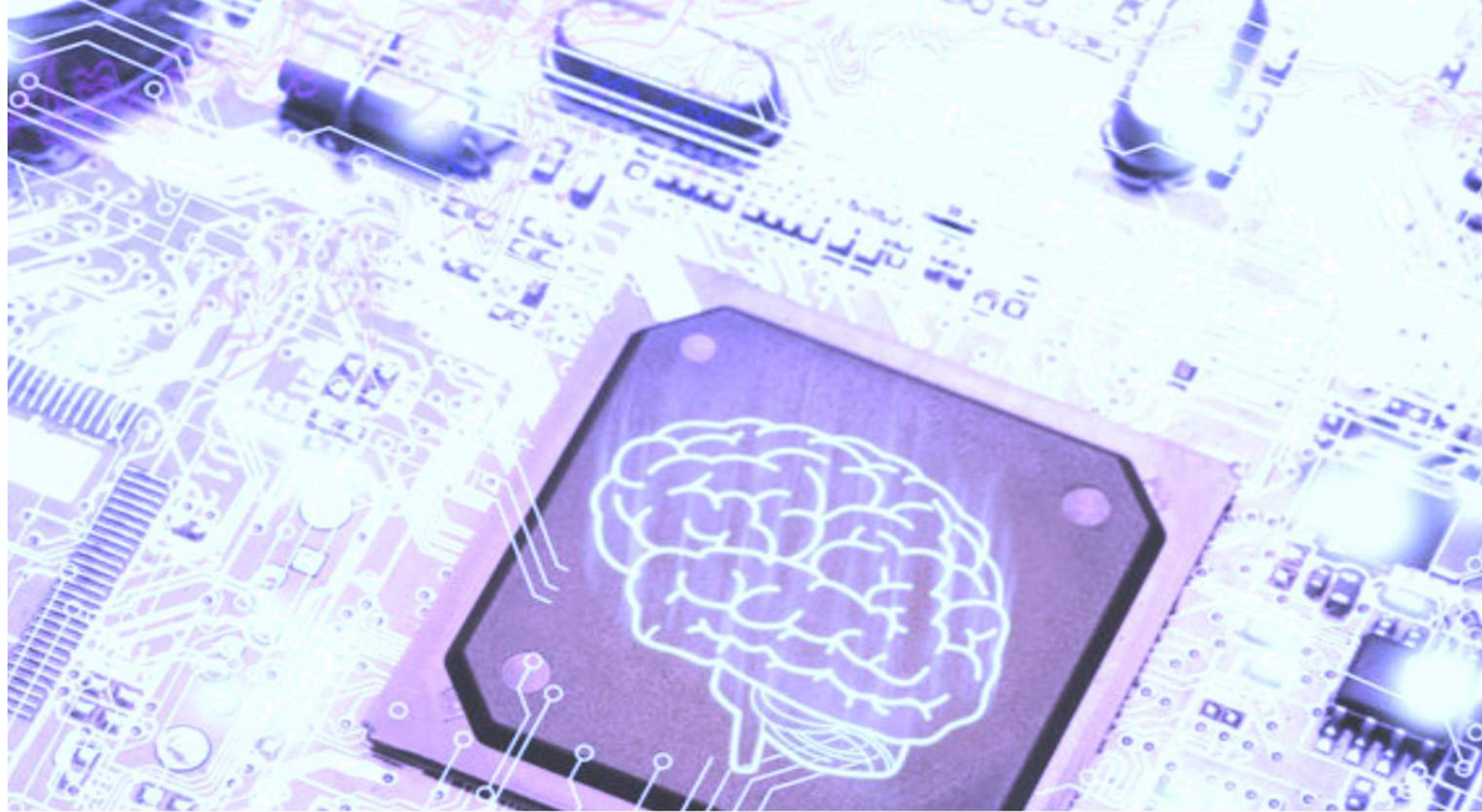
4-20mA

0-5/ 0-10V

Dry contact

PT100/ 1000

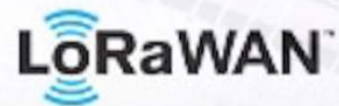
Multi-channel



NB-IoT



SATELLITE



LoRaWAN



SIGFOX



WIREPAS



Wi-Fi



ellenex software platform

Designed for enterprise
Role-based access control
API-first
Simple and scalable
Custom workflow engine
Custom device parameters
Multi-channel alerting
SCADA system integrable



An aerial night view of a city, likely New York City, showing a dense urban landscape with numerous skyscrapers and residential buildings. A multi-lane highway runs through the center of the image, with light trails from vehicles creating a sense of motion. Overlaid on the city scene is a network diagram consisting of several glowing nodes (represented by small white circles) connected by thin, white, curved lines that arc across the sky. The overall color palette is dark blue and black, with white light trails and network lines providing contrast.

Please contact us or our representative partner
to discuss your application
sales@ellenex.com

Thank you

