

North Town Commons

2920



2950



George Busbee Pkwy.

Kennesaw, GA 30144

CBRE

Property Info

AVAILABILITY

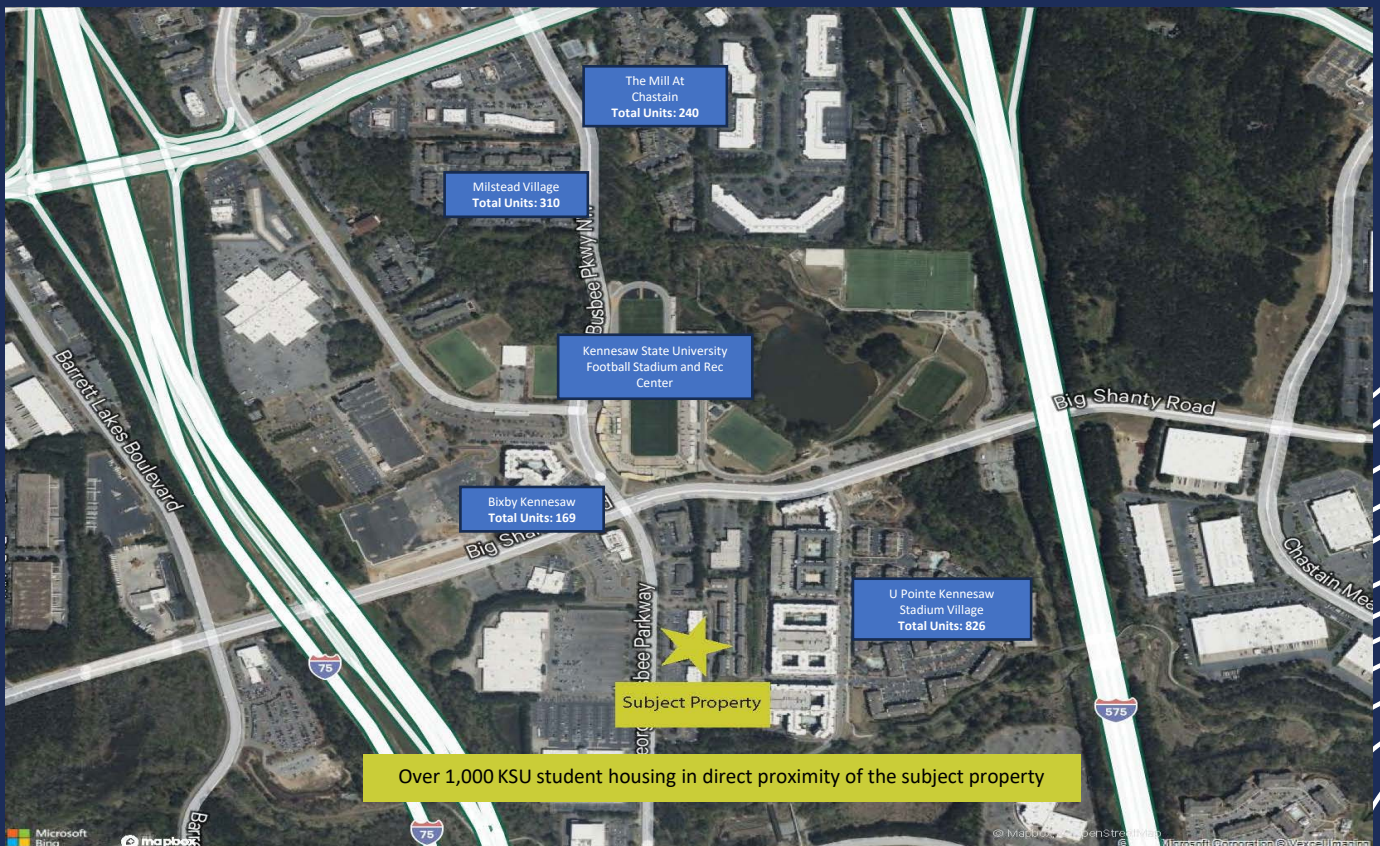
- + Building 2920 (**Suite # 109**) 4,200 SF
- + Building 2950 Fully Leased

LOCATION

- + Ideally located in the regional retail district of Town Center and Kennesaw State University. Strategically located between I-75 and I-575.

AREA TENANTS/CO-TENANTS

- + North Town is comprised of two parcels in a mixed parcel development. The center has good retail synergy. The tenant mix includes McAlister's Deli, State Farm, Super Pizza Bros., and more
- + Tenants near by include PGA Tour Superstore, Burlington, At Home, Children's Healthcare of Atlanta, Town Center Mall, Kennesaw State University, Stone Summit Climbing, Taco Mac, Tin Lizzy's Cantina, Olive Garden, Marshall's, TJ Maxx, and more



Tenant Roster

Building 2920		
SUITE	TENANT	SIZE
100	Defined by Bre, LLC	4,200 SF
105	Hot Box	1,400 SF
109	AVAILABLE	4,200 SF
Building 2950		
SUITE	TENANT	SIZE
100	Spice Wing	1,470 SF
101	R&B Pilates	1,400 SF
102	McAlister's Deli	3,880 SF
103	Super Pizza Bros	2,000 SF
104	State Farm, Inc	1,140 SF

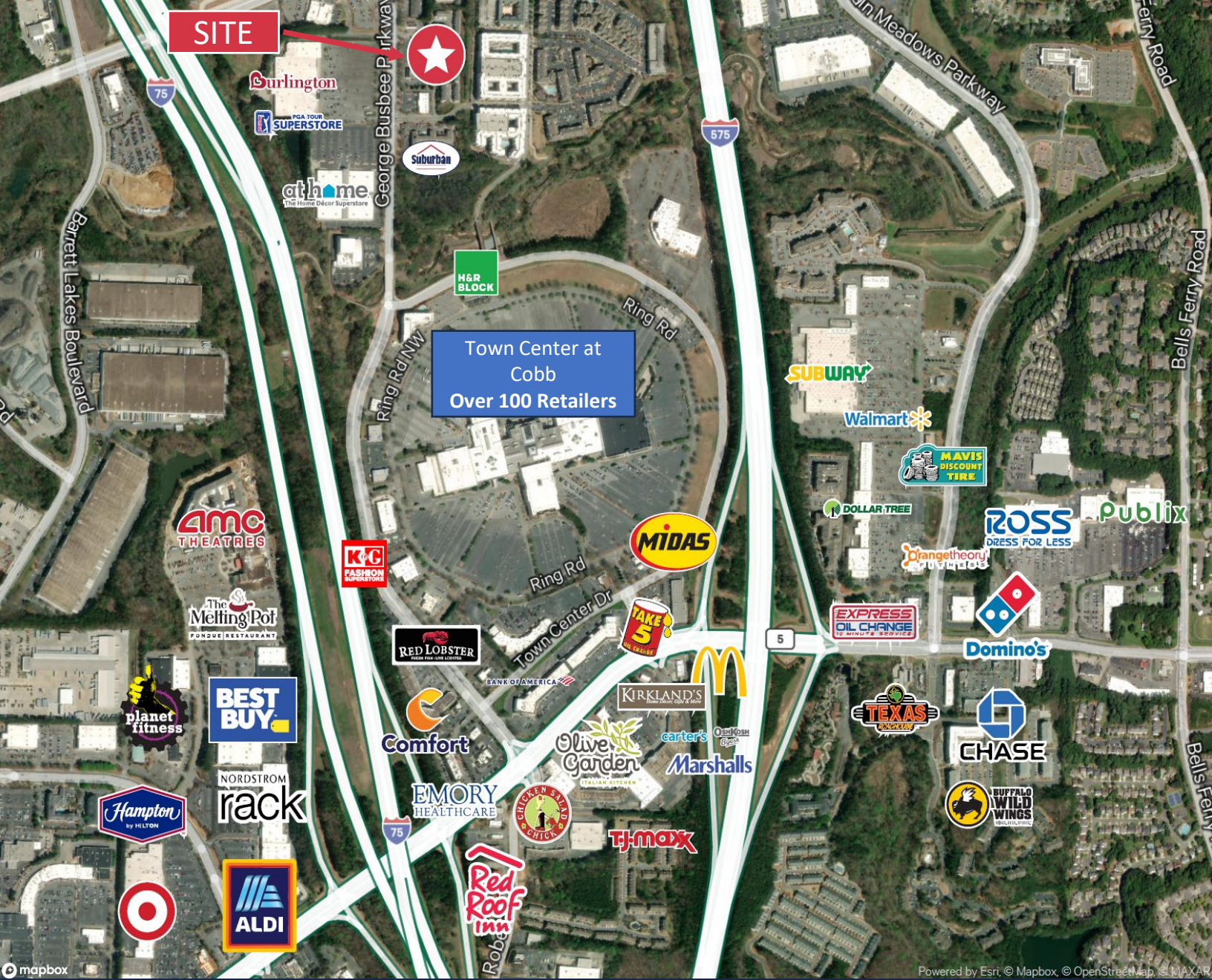
Building 2920



CONTACT

Tony Cerniglia
 First Vice President
 404-923-1312
tony.cerniglia@cbre.com

CBRE



Area Demographics

Miles	Est. Population	Avg. HH Income	Avg. HH Value
1 Mile	5,990	\$81,724	\$325,769
2 Miles	27,392	\$99,992	\$324,797
3 Miles	67,223	\$103,606	\$318,743

2920 & 2950 George Busbee Pkwy.

CONTACTS

Tony Cerniglia

First Vice President

+1 404-923-1312

tony.cerniglia@cbre.com

CBRE, INC.

+1 404 504 7900

www.cbre.com/atlanta

CBRE

© 2024 CBRE, Inc. All rights reserved. This information has been obtained from sources believed reliable but has not been verified for accuracy or completeness. CBRE, Inc. makes no guarantee, representation or warranty and accepts no responsibility or liability as to the accuracy, completeness, or reliability of the information contained herein. You should conduct a careful, independent investigation of the property and verify all information. Any reliance on this information is solely at your own risk. CBRE and the CBRE logo are service marks of CBRE, Inc. All other marks displayed on this document are the property of their respective owners, and the use of such marks does not imply any affiliation with or endorsement of CBRE. Photos herein are the property of their respective owners. Use of these images without the express written consent of the owner is prohibited.