

# The Coriolis Effect

Ms. Larsh

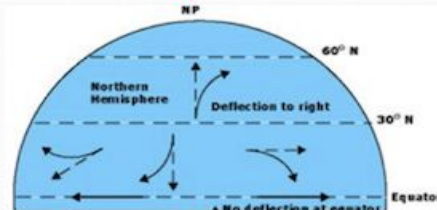
# **What is the Coriolis Effect?**

when a moving object appears to move or curve away from its intended destination due to the Earth's rotation

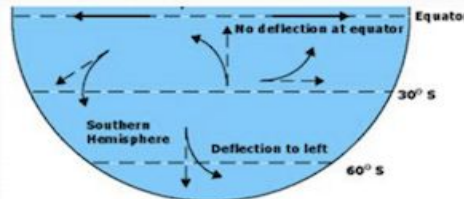
# The Coriolis Effect Explained:

<https://www.youtube.com/watch?v=i2mec3vgeal>

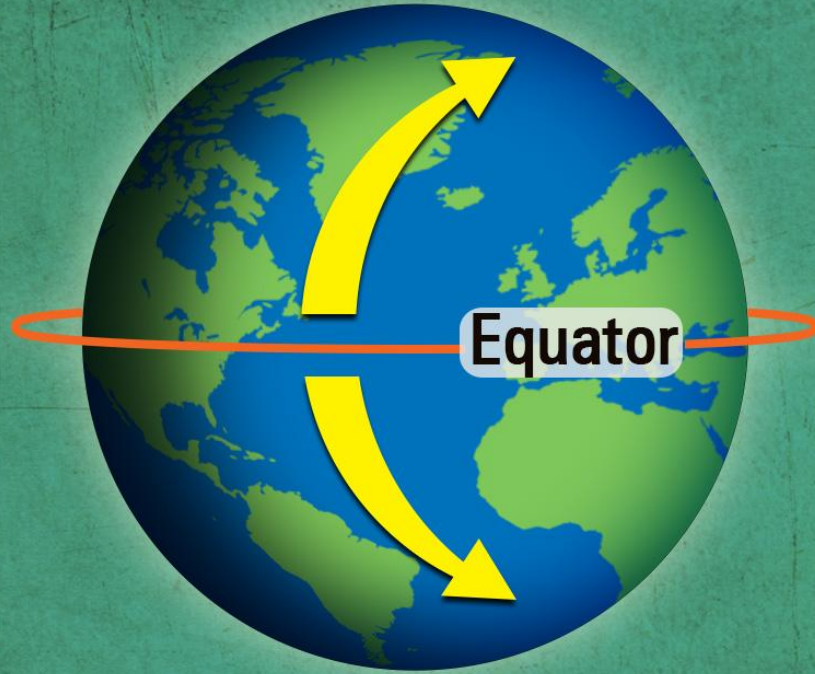
- So the coriolis effect causes wind flowing from high pressure to low pressure to curve as the wind moves
- In the **Northern Hemisphere**, the coriolis effect causes things to curve to the **Right**



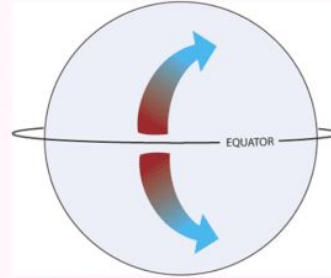
- In the **Southern Hemisphere**, the coriolis effect causes things to curve to the **Left**



The **Coriolis effect** has a crucial impact on the ocean currents and wind directions.



# Coriolis Effect

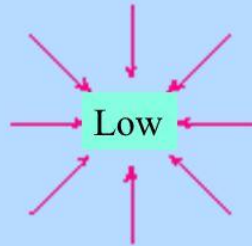


# Eye of the Storm



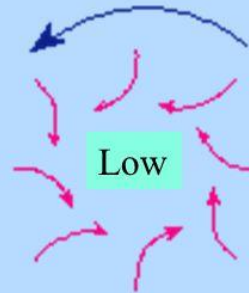
# Coriolis effect and hurricanes

Top view



No Coriolis Effects

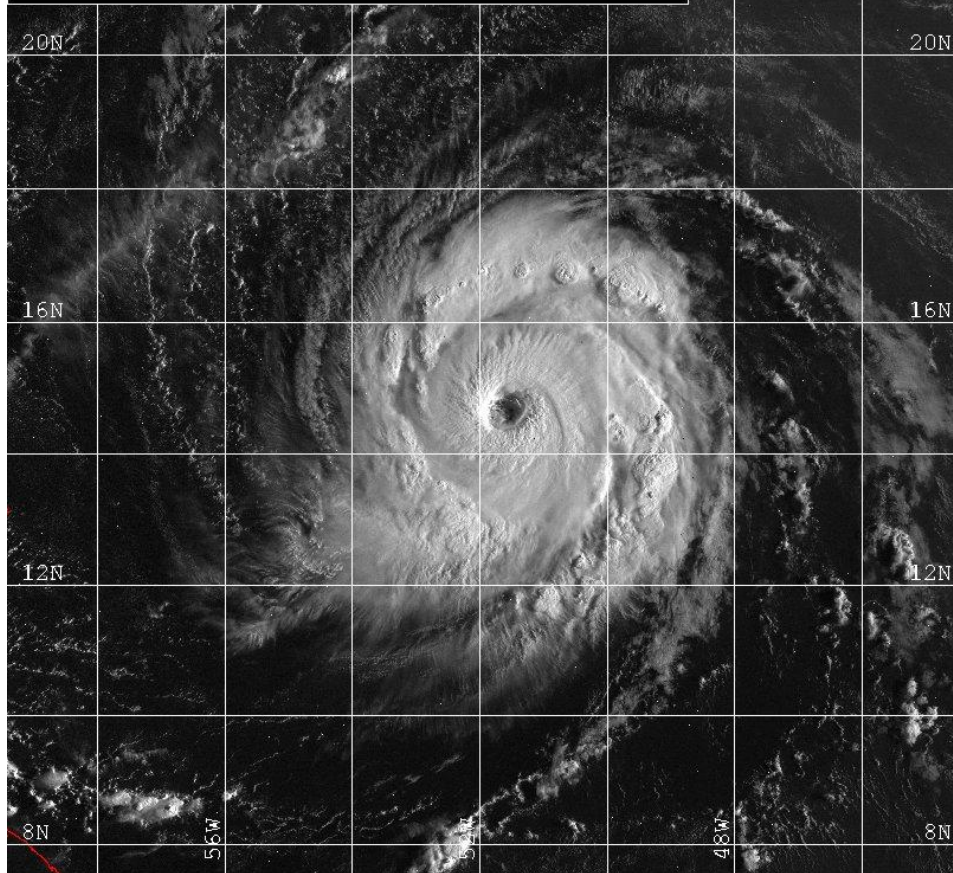
Counterclockwise  
Wind Flow



With Coriolis Effects

(Northern Hemisphere example)

SATELLITE: g8 98 09 19 1045Z DAY/NIGHT PRODUCT  
WARNING: GEORGES (07) 980919 1200 14.8N 52.0W  
NRL Monterey Code 7541





# Discussion

What would weather be like on Earth without the Coriolis Effect?